



# SOUTH SAN ANTONIO INDEPENDENT SCHOOL DISTRICT

## Agenda Item Summary

Meeting Date: May 15, 2024

Agenda Section: Consent

Agenda Item Title: Approval and Purchase of NWEA – MAP

From/Presenters: Millicent Marcha, Chief Academic Officer  
Vanessa Dominguez, Director of Teaching and Learning

Description: MAP Growth, part of the Growth Activation Solution from NWEA, is the most trusted and innovative assessment for measuring achievement and growth in K–12 math, reading, language usage, and science. It provides teachers with accurate, actionable evidence to help inform instructional strategies regardless of how far students are above or below grade level. It also connects to the largest set of instructional content providers, giving educators flexibility in curriculum choices.

Historical Data: NWEA - MAP Growth has been used for 2 years to norm-reference students and monitor growth at the year's beginning, middle, and end. MAP data will support “student growth measures” for the Teachers’ Incentive Allotment or TIA this year.

Recommendation: Approve the request for the purchase of NWEA - MAP for the 2024-2025 school year.

Purchasing Director and Approval Date:

Funding Budget Code and Amount: 199-E-11-6395-00-818-0-30-0-00 \$128,959.25

Goal: SSAISD will increase academic achievement for all students and thus closing the gap between student populations in pursuit of advanced performance.



## SALES ORDER

Order Date: 04/11/2024

Start Date: 08/01/2024

Order #: 00092883

End Date: 07/31/2025

### Prepared For

Account Name: South San Antonio ISD

Agency Code: 12301

Primary Contact: Judith Benavidez

Email: jbenavidez@southsanisd.net

#### Customer Information

South San Antonio ISD  
5622 Ray Ellison  
San Antonio, TX 78242  
United States

#### Bill-To Information

South San Antonio ISD  
5622 Ray Ellison  
San Antonio, TX 78242  
United States

### NWEA Sales Point of Contact

Tiffany Arce

tiffany.arce@nwea.org

### Products & Services

Product	Catalog Price	Sales Price	Quantity	Total Price	Item Discount
MAP Growth K-12	\$14.50	\$12.25	7,723	\$94,606.75	-\$17,376.75
MAP Growth Science (Add-On)	\$2.75	\$2.50	6,221	\$15,552.50	-\$1,555.25
Growth Report +1hr Virtual Consulting	\$2,000.00	\$0.00	1	\$0.00	-\$2,000.00
Growth Report +1hr Virtual Consulting	\$2,000.00	\$1,400.00	1	\$1,400.00	-\$600.00
MAP Reading Fluency Add-on for Bundle price (incl. English & Spanish)	\$7.00	\$5.00	3,480	\$17,400.00	-\$6,960.00

Discount	-\$28,492.00
Subtotal	\$128,959.25
Estimated Tax	\$0.00
<b>Grand Total</b>	<b>\$128,959.25</b>

### Notes

Central Texas Purchasing Alliance

### Invoicing Information

Unless otherwise specified, payment terms are Net 30. Remittance instructions will be included with your invoice.



Until this Sales Order is signed, the pricing is valid for 30 days from the Order Date listed at the top of this document. Please confirm the billing address or specify changes to your Sales Point of Contact.

For a copy of the latest NWEA division W-9, it is available at <https://support.hmhco.com/s/article/Billing-and-Invoices>. Click on "Requesting a W-9" and select "NWEA".

The Tax ID for NWEA, a division of Houghton Mifflin Harcourt Publishing Company, is 04-1456030.

## Terms and Conditions

This Sales Order is between Customer and NWEA, a division of Houghton Mifflin Harcourt Publishing Company, and is subject to the HMH Standard PreK-12 Terms of Purchase located at <https://www.hmhco.com/terms-of-purchase> (the "Agreement") for the Products and Services listed above. By signing this Sales Order, you agree you have read, understand, and agree to the Agreement.

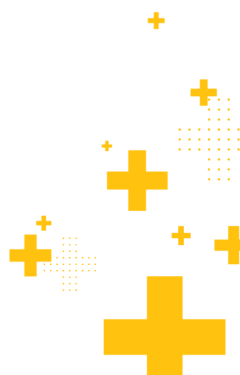
## Signature

Customer  
Signature: \_\_\_\_\_

Customer  
Printed Name: \_\_\_\_\_

Date: \_\_\_\_\_

Customer Title \_\_\_\_\_



# Curriculum Associates®

## Prepared For:

Judith Benavidez  
South San Antonio ISD  
1450 Gillette Blvd,  
San Antonio, TX 78224

5/6/2024

Dear Judith Benavidez,

Thank you for requesting a price quote from Curriculum Associates. The chart below provides a summary of the products and i-Ready Partner Services included. If you have any questions or would like any changes, please contact us.

Implementation Starting: 2024-2025    Quote ID: 353010.9    Quote Valid through: 12/31/2024

Product	List Price	Net Price
i-Ready	\$95,584.00	\$50,692.00
Professional Learning	\$57,200.00	\$57,200.00
i-Ready Partners Services	\$0.00	\$0.00
<i>i-Ready Partners Services Includes:</i>		
<ul style="list-style-type: none"><li><i>Initial Implementation Services: Provisioning, Initial Rostering, Hosting, Technology Assessment</i></li><li><i>Implementation Management: Partner Success Manager You Know On A First Name Basis, Implementation Guidance, Realtime Achievement Data After Every Assessment, Ongoing Data Management</i></li><li><i>Staff Development Consultation and Resources: Consultative services to help you plan and make the most of Professional Learning sessions; Access to Online Educator Learning (OEL) Digital Courses, and i-Ready Central Self-Service Resources</i></li><li><i>Technical Support: Proactive Network Monitoring &amp; Issue Notification, Annual Health Check, Technical Support</i></li></ul>		
	List Total:	\$152,784.00
	Savings:	\$44,892.00
	Shipping/Tax/Other:	\$0.00
	<b>Total:</b>	<b>\$107,892.00</b>

Thank you again for your interest in Curriculum Associates.

Sincerely

Ale Gonzalez  
(956) 566-2077  
alegonzalez@cainc.com

**Please submit this quote with your purchase order**

# Curriculum Associates®

Quote ID: 353010.9    Date: 5/6/2024    Quote Valid through: 12/31/2024

**Prepared For:**  
**Judith Benavidez**  
 South San Antonio ISD  
 1450 Gillette Blvd,  
 San Antonio, TX 78224  
 jbenavidez@southsanisd.net  
 (210) 977-7470

**Your Representative:**  
 Ale Gonzalez  
 (956) 566-2077  
 alegonzalez@cainc.com

## Alan B Shepard MS 5558 Ray Ellison Blvd, San Antonio, TX 78242

Total Building Enrollment: 519, Grade Range: 6 - 8

Product Name	Grade	Item #	Qty	List Price	Net Price	Total
Online Educator Learning Platform Site License Including Educator Prep Series (Complements Onsite and Virtual Professional Learning)	Multiple	28024.0	1	\$0.00	\$0.00	\$0.00
Professional Learning Session (up to 6 hours) AY 24-25	Multiple	38557.0	2	\$2,200.00	\$2,200.00	\$4,400.00
i-Ready Assessment Math and Reading Site License 501-800 Students 1 Year	Multiple	28800.0	1	\$7,540.00	\$7,163.00	\$7,163.00
i-Ready Partners Implementation Support - Provisioning + Tech Support + Hosting + Data Management + Implementation Planning + Data Reviews + and Check ins 1 Year	Multiple	27939.0	1	\$0.00	\$0.00	\$0.00
Subtotal:						\$11,563.00
Shipping:						\$0.00
Tax:						\$0.00
School Subtotal:						\$11,563.00

## Dwight MS 2454 W Southcross Blvd, San Antonio, TX 78211

Total Building Enrollment: 432, Grade Range: 6 - 8

Product Name	Grade	Item #	Qty	List Price	Net Price	Total
Online Educator Learning Platform Site License Including Educator Prep Series (Complements Onsite and Virtual Professional Learning)	Multiple	28024.0	1	\$0.00	\$0.00	\$0.00
Professional Learning Session (up to 6 hours) AY 24-25	Multiple	38557.0	2	\$2,200.00	\$2,200.00	\$4,400.00
i-Ready Assessment Math and Reading Site License 351-500 Students 1 Year	Multiple	28799.0	1	\$4,930.00	\$4,683.50	\$4,683.50
i-Ready Partners Implementation Support - Provisioning + Tech Support + Hosting + Data Management + Implementation Planning + Data Reviews + and Check ins 1 Year	Multiple	27939.0	1	\$0.00	\$0.00	\$0.00
Subtotal:						\$9,083.50
Shipping:						\$0.00
Tax:						\$0.00
School Subtotal:						\$9,083.50

### Five Palms ES 7138 Five Palms Dr, San Antonio, TX 78242

Total Building Enrollment: 480, Grade Range: PK - 5

Product Name	Grade	Item #	Qty	List Price	Net Price	Total
Online Educator Learning Platform Site License Including Educator Prep Series (Complements Onsite and Virtual Professional Learning)	Multiple	28024.0	1	\$0.00	\$0.00	\$0.00
Professional Learning Session (up to 6 hours) AY 24-25	Multiple	38557.0	2	\$2,200.00	\$2,200.00	\$4,400.00
i-Ready Assessment Math and Reading Site License 351-500 Students 1 Year	Multiple	28799.0	1	\$4,930.00	\$4,683.50	\$4,683.50
i-Ready Partners Implementation Support - Provisioning + Tech Support + Hosting + Data Management + Implementation Planning + Data Reviews + and Check ins 1 Year	Multiple	27939.0	1	\$0.00	\$0.00	\$0.00
Subtotal:						\$9,083.50
Shipping:						\$0.00
Tax:						\$0.00
School Subtotal:						\$9,083.50

### Frank Madla ES 6100 Royalgate Dr, San Antonio, TX 78242

Total Building Enrollment: 378, Grade Range: PK - 5

Product Name	Grade	Item #	Qty	List Price	Net Price	Total
Online Educator Learning Platform Site License Including Educator Prep Series (Complements Onsite and Virtual Professional Learning)	Multiple	28024.0	1	\$0.00	\$0.00	\$0.00
Professional Learning Session (up to 6 hours) AY 24-25	Multiple	38557.0	2	\$2,200.00	\$2,200.00	\$4,400.00
i-Ready Assessment Math and Reading Site License 351-500 Students 1 Year	Multiple	28799.0	1	\$4,930.00	\$4,683.50	\$4,683.50
i-Ready Partners Implementation Support - Provisioning + Tech Support + Hosting + Data Management + Implementation Planning + Data Reviews + and Check ins 1 Year	Multiple	27939.0	1	\$0.00	\$0.00	\$0.00
Subtotal:						\$9,083.50
Shipping:						\$0.00
Tax:						\$0.00
School Subtotal:						\$9,083.50

### Hutchins ES 1919 W Hutchins Pl, San Antonio, TX 78224

Total Building Enrollment: 396, Grade Range: PK - 5

Product Name	Grade	Item #	Qty	List Price	Net Price	Total
Online Educator Learning Platform Site License Including Educator Prep Series (Complements Onsite and Virtual Professional Learning)	Multiple	28024.0	1	\$0.00	\$0.00	\$0.00
Professional Learning Session (up to 6 hours) AY 24-25	Multiple	38557.0	2	\$2,200.00	\$2,200.00	\$4,400.00
i-Ready Assessment Math and Reading Site License 351-500 Students 1 Year	Multiple	28799.0	1	\$4,930.00	\$4,683.50	\$4,683.50
i-Ready Partners Implementation Support - Provisioning + Tech Support + Hosting + Data Management + Implementation Planning + Data Reviews + and Check ins 1 Year	Multiple	27939.0	1	\$0.00	\$0.00	\$0.00
Subtotal:						\$9,083.50
Shipping:						\$0.00
Tax:						\$0.00
School Subtotal:						\$9,083.50

**Miguel Carrillo Jr ES 500 Price Ave, San Antonio, TX 78211**

Total Building Enrollment: 264, Grade Range: PK - 5

Product Name	Grade	Item #	Qty	List Price	Net Price	Total
Online Educator Learning Platform Site License Including Educator Prep Series (Complements Onsite and Virtual Professional Learning)	Multiple	28024.0	1	\$0.00	\$0.00	\$0.00
Professional Learning Session (up to 6 hours) AY 24-25	Multiple	38557.0	2	\$2,200.00	\$2,200.00	\$4,400.00
i-Ready Assessment Math and Reading Site License 201-350 Students 1 Year	Multiple	28798.0	1	\$3,190.00	\$3,030.50	\$3,030.50
i-Ready Partners Implementation Support - Provisioning + Tech Support + Hosting + Data Management + Implementation Planning + Data Reviews + and Check ins 1 Year	Multiple	27939.0	1	\$0.00	\$0.00	\$0.00
Subtotal:						\$7,430.50
Shipping:						\$0.00
Tax:						\$0.00
School Subtotal:						\$7,430.50

**Neil Armstrong ES 7111 Apple Valley Dr, San Antonio, TX 78242**

Total Building Enrollment: 282, Grade Range: PK - 5

Product Name	Grade	Item #	Qty	List Price	Net Price	Total
Online Educator Learning Platform Site License Including Educator Prep Series (Complements Onsite and Virtual Professional Learning)	Multiple	28024.0	1	\$0.00	\$0.00	\$0.00
Professional Learning Session (up to 6 hours) AY 24-25	Multiple	38557.0	2	\$2,200.00	\$2,200.00	\$4,400.00
i-Ready Assessment Math and Reading Site License 201-350 Students 1 Year	Multiple	28798.0	1	\$3,190.00	\$3,030.50	\$3,030.50
i-Ready Partners Implementation Support - Provisioning + Tech Support + Hosting + Data Management + Implementation Planning + Data Reviews + and Check ins 1 Year	Multiple	27939.0	1	\$0.00	\$0.00	\$0.00
Subtotal:						\$7,430.50
Shipping:						\$0.00
Tax:						\$0.00
School Subtotal:						\$7,430.50

**Palo Alto ES 1725 Palo Alto Rd, San Antonio, TX 78211**

Total Building Enrollment: 402, Grade Range: PK - 5

Product Name	Grade	Item #	Qty	List Price	Net Price	Total
Online Educator Learning Platform Site License Including Educator Prep Series (Complements Onsite and Virtual Professional Learning)	Multiple	28024.0	1	\$0.00	\$0.00	\$0.00
Professional Learning Session (up to 6 hours) AY 24-25	Multiple	38557.0	2	\$2,200.00	\$2,200.00	\$4,400.00
i-Ready Assessment Math and Reading Site License 351-500 Students 1 Year	Multiple	28799.0	1	\$4,930.00	\$4,683.50	\$4,683.50
i-Ready Partners Implementation Support - Provisioning + Tech Support + Hosting + Data Management + Implementation Planning + Data Reviews + and Check ins 1 Year	Multiple	27939.0	1	\$0.00	\$0.00	\$0.00
Subtotal:						\$9,083.50
Shipping:						\$0.00
Tax:						\$0.00
School Subtotal:						\$9,083.50

**Price ES 245 Price Ave, San Antonio, TX 78211**

Total Building Enrollment: 366, Grade Range: PK - 5

Product Name	Grade	Item #	Qty	List Price	Net Price	Total
Online Educator Learning Platform Site License Including Educator Prep Series (Complements Onsite and Virtual Professional Learning)	Multiple	28024.0	1	\$0.00	\$0.00	\$0.00
Professional Learning Session (up to 6 hours) AY 24-25	Multiple	38557.0	2	\$2,200.00	\$2,200.00	\$4,400.00
i-Ready Assessment Math and Reading Site License 351-500 Students 1 Year	Multiple	28799.0	1	\$4,930.00	\$4,683.50	\$4,683.50
i-Ready Partners Implementation Support - Provisioning + Tech Support + Hosting + Data Management + Implementation Planning + Data Reviews + and Check ins 1 Year	Multiple	27939.0	1	\$0.00	\$0.00	\$0.00
Subtotal:						\$9,083.50
Shipping:						\$0.00
Tax:						\$0.00
School Subtotal:						\$9,083.50

**Roy P Benavidez ES 8340 Interstate 35 S, San Antonio, TX 78224**

Total Building Enrollment: 480, Grade Range: PK - 5

Product Name	Grade	Item #	Qty	List Price	Net Price	Total
Online Educator Learning Platform Site License Including Educator Prep Series (Complements Onsite and Virtual Professional Learning)	Multiple	28024.0	1	\$0.00	\$0.00	\$0.00
Professional Learning Session (up to 6 hours) AY 24-25	Multiple	38557.0	2	\$2,200.00	\$2,200.00	\$4,400.00
i-Ready Assessment Math and Reading Site License 351-500 Students 1 Year	Multiple	28799.0	1	\$4,930.00	\$4,683.50	\$4,683.50
i-Ready Partners Implementation Support - Provisioning + Tech Support + Hosting + Data Management + Implementation Planning + Data Reviews + and Check ins 1 Year	Multiple	27939.0	1	\$0.00	\$0.00	\$0.00
Subtotal:						\$9,083.50
Shipping:						\$0.00
Tax:						\$0.00
School Subtotal:						\$9,083.50

**South San Antonio HS 7535 Barlite Blvd, San Antonio, TX 78224**

Total Building Enrollment: 2312, Grade Range: 9 - 12

Product Name	Grade	Item #	Qty	List Price	Net Price	Total
Online Educator Learning Platform Site License Including Educator Prep Series (Complements Onsite and Virtual Professional Learning)	Multiple	28024.0	1	\$0.00	\$0.00	\$0.00
Professional Learning Session (up to 6 hours) AY 24-25	Multiple	38557.0	2	\$2,200.00	\$2,200.00	\$4,400.00
i-Ready Assessment Math Per Student License Grades 9-12 1 Year	9-12	14928.0	2312	\$7.25	\$0.00	\$0.00
i-Ready Assessment Reading Per Student License Grades 9-12 1 Year	9-12	14936.0	2312	\$7.25	\$0.00	\$0.00
Subtotal:						\$4,400.00
Shipping:						\$0.00
Tax:						\$0.00
School Subtotal:						\$4,400.00



**West Campus HS 5622 Ray Ellison Blvd, San Antonio, TX 78242**

Total Building Enrollment: 600, Grade Range: 9 - 12

Product Name	Grade	Item #	Qty	List Price	Net Price	Total
Online Educator Learning Platform Site License Including Educator Prep Series (Complements Onsite and Virtual Professional Learning)	Multiple	28024.0	1	\$0.00	\$0.00	\$0.00
Professional Learning Session (up to 6 hours) AY 24-25	Multiple	38557.0	2	\$2,200.00	\$2,200.00	\$4,400.00
i-Ready Assessment Math Per Student License Grades 9-12 1 Year	9-12	14928.0	600	\$7.25	\$0.00	\$0.00
i-Ready Assessment Reading Per Student License Grades 9-12 1 Year	9-12	14936.0	600	\$7.25	\$0.00	\$0.00
Subtotal:						\$4,400.00
Shipping:						\$0.00
Tax:						\$0.00
School Subtotal:						\$4,400.00

**Zamora MS 8638 Larkia St, San Antonio, TX 78224**

Total Building Enrollment: 437, Grade Range: 6 - 8

Product Name	Grade	Item #	Qty	List Price	Net Price	Total
Online Educator Learning Platform Site License Including Educator Prep Series (Complements Onsite and Virtual Professional Learning)	Multiple	28024.0	1	\$0.00	\$0.00	\$0.00
Professional Learning Session (up to 6 hours) AY 24-25	Multiple	38557.0	2	\$2,200.00	\$2,200.00	\$4,400.00
i-Ready Assessment Math and Reading Site License 351-500 Students 1 Year	Multiple	28799.0	1	\$4,930.00	\$4,683.50	\$4,683.50
i-Ready Partners Implementation Support - Provisioning + Tech Support + Hosting + Data Management + Implementation Planning + Data Reviews + and Check ins 1 Year	Multiple	27939.0	1	\$0.00	\$0.00	\$0.00
Subtotal:						\$9,083.50
Shipping:						\$0.00
Tax:						\$0.00
School Subtotal:						\$9,083.50

**South San Antonio ISD 1450 Gillette Blvd, San Antonio, TX 78224**

Total Building Enrollment: 4437, Grade Range: PK - 12

Product Name	Grade	Item #	Qty	List Price	Net Price	Total
Professional Learning Add On Leadership Session AY 24-25	Multiple	38630.0	1	\$0.00	\$0.00	\$0.00
Subtotal:						\$0.00
Shipping:						\$0.00
Tax:						\$0.00
School Subtotal:						\$0.00

Total		
	List Total:	\$152,784.00
	Savings:	\$44,892.00
	Merchandise Total:	\$107,892.00
	Voucher/Credit:	\$0.00
	Estimated Tax:	\$0.00
	Estimated Shipping:	\$0.00
	<b>Total:</b>	<b>\$107,892.00</b>

Special Notes	
<ul style="list-style-type: none"> <li>• 5% discount applied to i-Ready based on scope of quote.</li> <li>• All i-Ready purchases require professional learning.</li> </ul>	

F.O.B.: N. Billerica, MA 01862  
 Shipping: Shipping based on MDSE total  
 Terms: Net 30 days, pending credit approval  
 Fed. ID: #26-3954988

**Please submit this quote with your purchase order**

Y14

# Curriculum Associates®

## Information on Professional Learning Sessions and COVID-19

Protecting the health and safety of the educators we serve and their students, as well as the health and safety of our employees, is of paramount importance to Curriculum Associates. While it is our preference to deliver PL sessions in person, circumstances related to COVID-19 may require us to provide sessions virtually instead. Curriculum Associates' policy is to only provide PL sessions in person where one of our employees can reach the session site by car and where adequate safety measures are in place to protect the health of our session leaders and participants. Curriculum Associates reserves the right to switch any session from in-person to virtual if we cannot reach a session site by car, if adequate safety measures cannot be put in place, or if Curriculum Associates determines that it would otherwise put its employees at risk to provide an in-person session.

If your school or district will not permit visitors at the time of a scheduled session, Curriculum Associates would be happy to provide an equivalent live, virtual session via videoconference. Similarly, Curriculum Associates will comply with your school or district's health and safety requirements regarding on-site visitors if we are given adequate advance notice. Our PL Operations team will work with school or district personnel to hold sessions in a manner that protects the safety of educators and your school community as well as Curriculum Associates employees.

We are pleased to be able to serve you in these challenging times and look forward to providing productive learning sessions to your staff. Any questions regarding scheduling in-person or virtual training sessions should be directed to [pdoperations@cainc.com](mailto:pdoperations@cainc.com).

## Unparalleled Service and Educator Support

The *i-Ready Partners* team was born from our core value: the quality of our services is as important as the quality of our products. Know that when you implement our programs, your local *i-Ready Partners* will be there to support your team every step of the way.

### Service Components

Our *i-Ready Partners* team is tasked with helping you implement our programs to meet ambitious district goals. *i-Ready Partners* support includes:

- **An Account Manager You Know on a First-Name Basis:** Dedicated account managers are your point of connection to a powerful network of *i-Ready* experts focused on making your implementation successful.
- **Consultative Professional Development Planning:** Tailored professional development plans ensure that PD is tied to your implementation goals and that educators are equipped to optimize the use of our programs from day one.
- **Real-Time Achievement Data after Every Assessment:** Detailed student achievement analytics to empower data-driven practices in classrooms.
- **Educational Consultants to Help You Know What's Coming Next:** Educational consultants to keep you up to speed on our latest research, development, and best practices.
- **Technical Support and Health Checks:** Proactive support that anticipates and heads off issues before they start—and is there for you should they arise.



**Account Management**



**Professional Development**



**Educational Consultants**



**Achievement Analytics**



**Technical Support**

## Your *i-Ready Partners* Team

Dedicated to helping you implement *i-Ready* programs and achieve your district goals



# Curriculum Associates®

## Placing an Order

**Email:** [Orders@cainc.com](mailto:Orders@cainc.com)

**Fax:** 1-800-366-1158

**Mail:**

ATTN: CUSTOMER SERVICE DEPT.

Curriculum Associates LLC

153 Rangeway Rd

North Billerica, MA 01862-2013

Please visit [CurriculumAssociates.com](http://CurriculumAssociates.com) for more information about placing orders or contact CA's customer service department (1-800-225-0248) and reference quote number for questions.

Please attach quote to all signed purchase orders.

If tax exempt, please submit a valid exemption certificate with PO and quote in order to avoid processing delays. Exemption certificates can also be submitted to [exempt@cainc.com](mailto:exempt@cainc.com).

## Shipping Policy

Unless otherwise noted, shipping costs are calculated as follows:

Order Amount	Freight Amount
\$74.99 or less	Max charge of \$12.75
\$75.00 to \$999.99	12% of order
\$1,000 to \$4,999.99	10% of order

Order Amount	Freight Amount
\$5,000.00 to \$99,999.99	9% of order
\$100,000 and more	7% of order

Please contact your local CA representative or customer service (1-800-225-0248) for expedited shipping rates. The weight limit for an expedited order is 500lbs.

The enhanced shipping and handling services listed below are available upon request subject to the availability of our carrier partners. Please notify us of these delivery requests prior to submitting your PO so that we can include the service on your quote appropriately:

- Interior Location Delivery \$50/shipment location
- White Glove Delivery Service \$350/shipment location

If our carrier partners are unable to deliver to the location instructed on the PO or you need to change the time or location of delivery, one or more of the following fees may be applicable:

- Delivery Address Change \$100/shipment location
- Freight Storage \$150/day/shipment location
- Freight Carrier Redelivery \$100/shipment location

Unless otherwise expressly indicated, the shipping terms for all deliveries is FOB CA's Shipping Point (whether to a CA or third party facility). Risk of loss and title is passed to purchaser upon transfer of the goods to carrier, standard shipping charges (listed above) are added to the invoice or included in the unit price unless otherwise specified.

Supply chain challenges outside of Curriculum Associates' control may impact inventory availability for print product. We recommend submission of purchase orders as soon as possible to help ensure timely delivery.

## Payment Terms

Payment terms are as follows:

- With credit approval: Net 30 days
- Without credit approval: payment in full at time of order
- Accounts must be current before subsequent shipments are made

To ensure payment processing is timely and environmentally conscious, CA encourages ACH payments. If you would like to pay via ACH, please request remittance information by emailing [AR@cainc.com](mailto:AR@cainc.com).

Please send any payment notifications to [payments@cainc.com](mailto:payments@cainc.com). Credit card payments are only accepted for purchases under \$50,000.

## Invoice Receipt Preference

CA is pleased to offer electronic invoice delivery. Electronic invoice delivery allows CA to deliver your invoice in a timely and environmentally friendly manner. To request electronic invoice delivery please contact the CA Accounts Receivable team at [invoices@cainc.com](mailto:invoices@cainc.com) or by fax (1-800-366-1158). Please reference your quote number, provide a valid email address where the invoice should be directed, and indicate you would like to opt into electronic invoice delivery.

## Terms of Service

Customer's use of i-Ready® shall be subject to the i-Ready Terms and Conditions of Use, which can be found at [i-ready.com/support](http://i-ready.com/support). Customer's professional-learning sessions will expire two years following the date of your purchase order or the implementation year noted on your quote, whichever comes first and are subject to the Professional Learning Terms of Service, which can be found at [i-ready.com/support](http://i-ready.com/support).

## Return Policy

For any non-print products - your subscription may be terminated and you may request a pro-rata refund within 90 days of license start date. After 90 days, your non-print products purchase shall be final and no refunds are available. Except for materials sold on a non-refundable basis, purchaser may return, at purchaser risk and expense, purchased print materials with pre-approval from CA's Customer Service department within 12 months of purchase. Please examine your order upon receipt. Before returning material, call CA's Customer Service department (1-800-225-0248 option 2) for return authorization and documentation. When returning material, please include your return authorization number and the return form that will be provided to you by CA's Return department. We do not accept returns on unused i-Ready or Toolbox licenses®, materials that have been used and/or are not in "saleable condition," and individual components of kits or sets including but not limited to BRIGANCE® Kits, Ready® student and teacher sets, Ready Classroom® student and teacher sets, and Magnetic Reading classroom kits.