

Proposed 2013-14 Elementary Re-zoning Plan

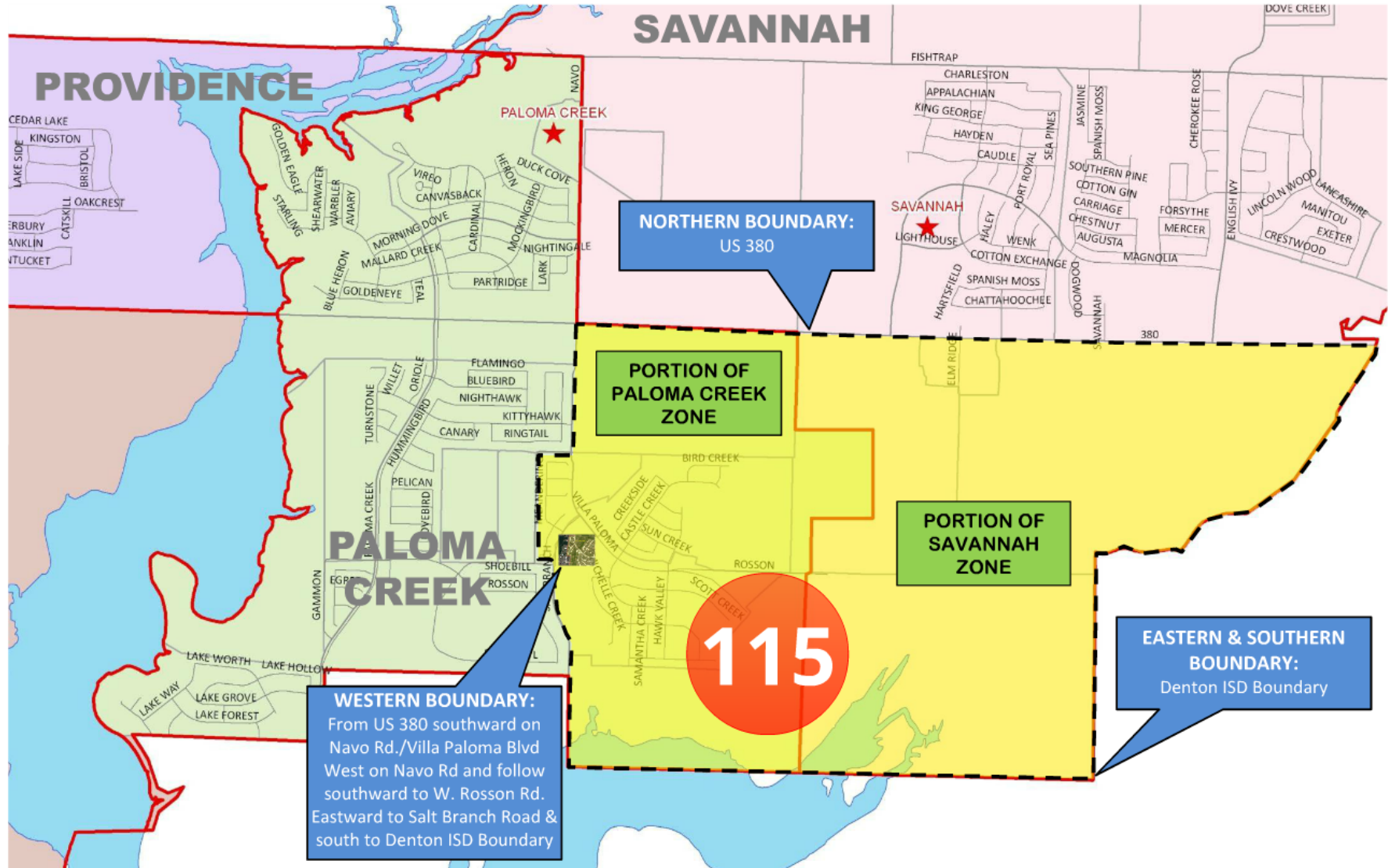


Denton ISD - Eastern Sector

Proposed Areas to be Re-zoned to Providence ES

Approximately 115 Students Detached from Paloma Creek ES & Savannah ES to Providence ES

OPTION #1

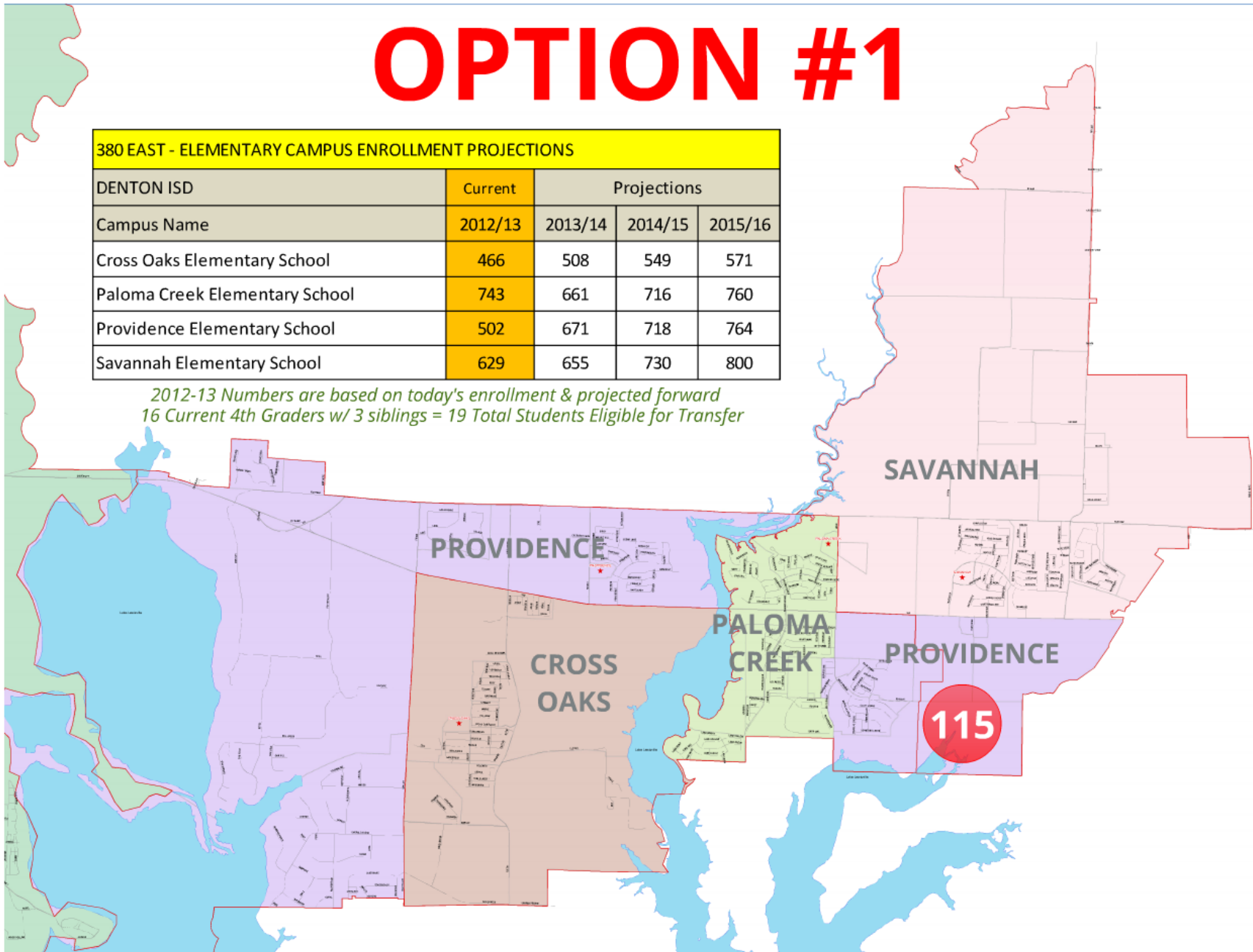


Proposed 2013-14 ES Zones - Eastern Sector

OPTION #1

380 EAST - ELEMENTARY CAMPUS ENROLLMENT PROJECTIONS				
DENTON ISD	Current	Projections		
Campus Name	2012/13	2013/14	2014/15	2015/16
Cross Oaks Elementary School	466	508	549	571
Paloma Creek Elementary School	743	661	716	760
Providence Elementary School	502	671	718	764
Savannah Elementary School	629	655	730	800

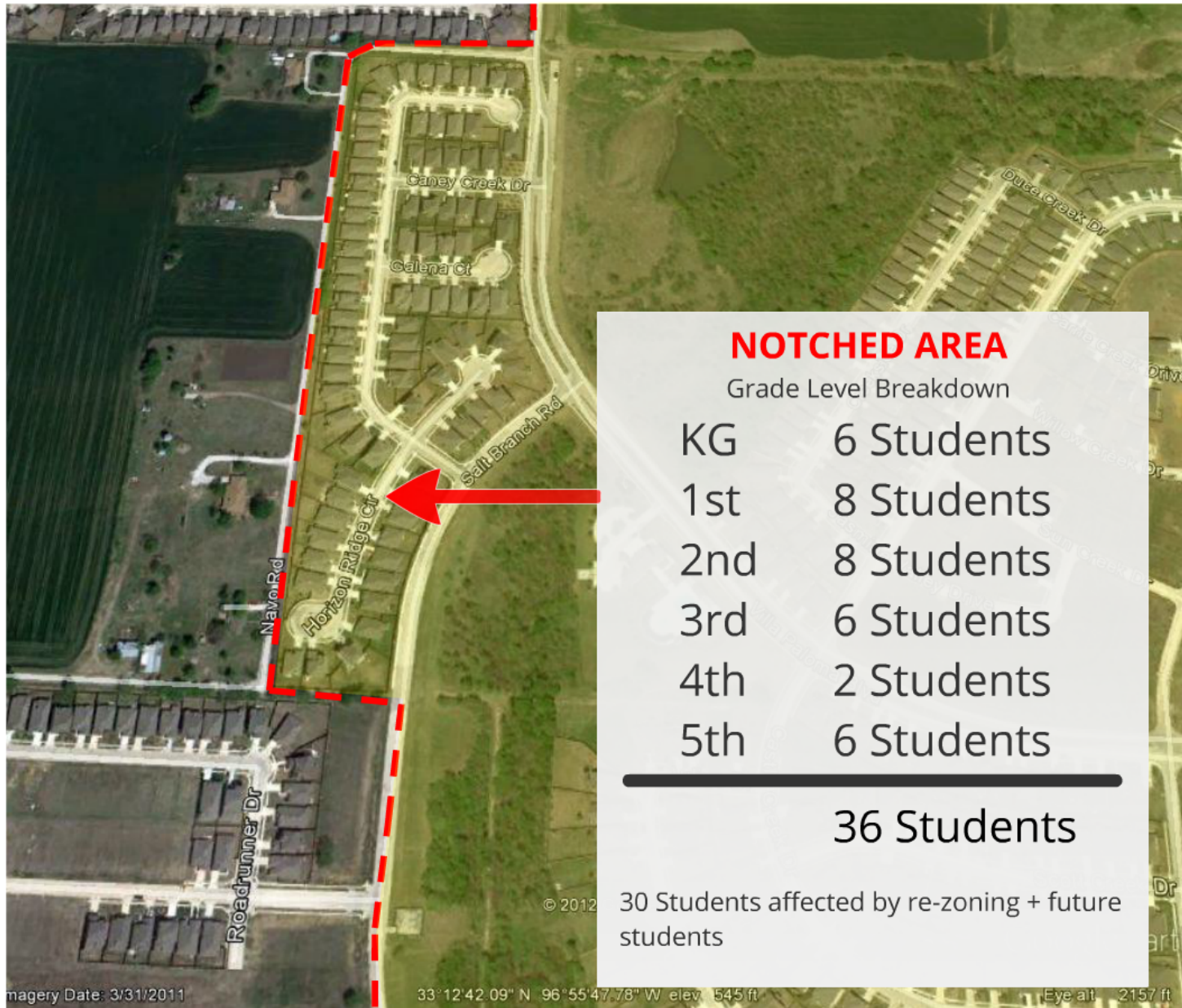
*2012-13 Numbers are based on today's enrollment & projected forward
16 Current 4th Graders w/ 3 siblings = 19 Total Students Eligible for Transfer*



Proposed 2013-14 ES Zones - Eastern Sector

Approximately 30 Students to Remain at Providence ES - Notched Area

OPTION #2

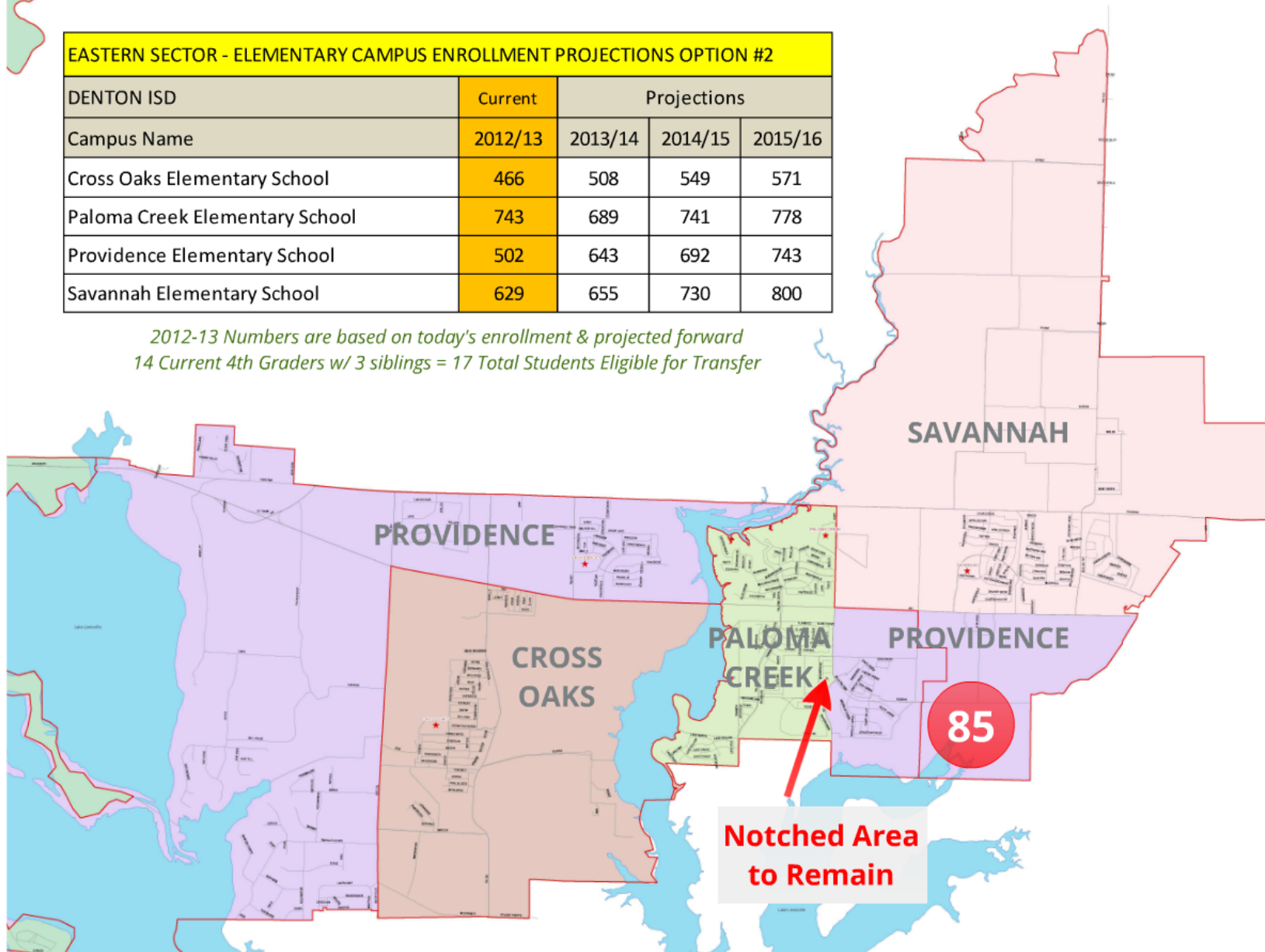


Proposed 2013-14 ES Zones - Eastern Sector

OPTION #2

EASTERN SECTOR - ELEMENTARY CAMPUS ENROLLMENT PROJECTIONS OPTION #2				
DENTON ISD	Current	Projections		
Campus Name	2012/13	2013/14	2014/15	2015/16
Cross Oaks Elementary School	466	508	549	571
Paloma Creek Elementary School	743	689	741	778
Providence Elementary School	502	643	692	743
Savannah Elementary School	629	655	730	800

*2012-13 Numbers are based on today's enrollment & projected forward
14 Current 4th Graders w/ 3 siblings = 17 Total Students Eligible for Transfer*



Questions & Answers

