

**SCOPE OF WORK**

BASED UPON: FINISHES INDICATED BY PANA COUNTY'S ARCHITECTURE DIVISION. ALL FINISHES SHALL BE IN ACCORDANCE WITH THE 2021 IBC AND ALL APPLICABLE CODES. FINISHES SHALL BE IN ACCORDANCE WITH THE 2021 IBC AND ALL APPLICABLE CODES. FINISHES SHALL BE IN ACCORDANCE WITH THE 2021 IBC AND ALL APPLICABLE CODES.

**GENERAL NOTES**

- 1) GENERAL NOTES SHALL BE READ IN CONJUNCTION WITH THE SPECIFICATIONS AND ALL APPLICABLE CODES. THE COLOR OF FINISHES, LINE WEIGHTS AND MATERIALS SHALL BE AS SHOWN ON THE DRAWINGS. FINISHES SHALL BE IN ACCORDANCE WITH THE 2021 IBC AND ALL APPLICABLE CODES. FINISHES SHALL BE IN ACCORDANCE WITH THE 2021 IBC AND ALL APPLICABLE CODES.
- 2) FINISHES SHALL BE IN ACCORDANCE WITH THE 2021 IBC AND ALL APPLICABLE CODES. FINISHES SHALL BE IN ACCORDANCE WITH THE 2021 IBC AND ALL APPLICABLE CODES.

**SYNTHETIC FLOORING**

**INSTALLATION:**

- FLOOR TYPE: **SYNTHETIC FLOORING**
- INSTALLATION: **INSTALLATION SHALL BE IN ACCORDANCE WITH THE 2021 IBC AND ALL APPLICABLE CODES. FINISHES SHALL BE IN ACCORDANCE WITH THE 2021 IBC AND ALL APPLICABLE CODES.**

**GENERAL NOTES:**

- 1) MATERIALS SHALL BE IN ACCORDANCE WITH THE 2021 IBC AND ALL APPLICABLE CODES. FINISHES SHALL BE IN ACCORDANCE WITH THE 2021 IBC AND ALL APPLICABLE CODES.
- 2) FINISHES SHALL BE IN ACCORDANCE WITH THE 2021 IBC AND ALL APPLICABLE CODES. FINISHES SHALL BE IN ACCORDANCE WITH THE 2021 IBC AND ALL APPLICABLE CODES.

**STRIPING GENERAL NOTES**

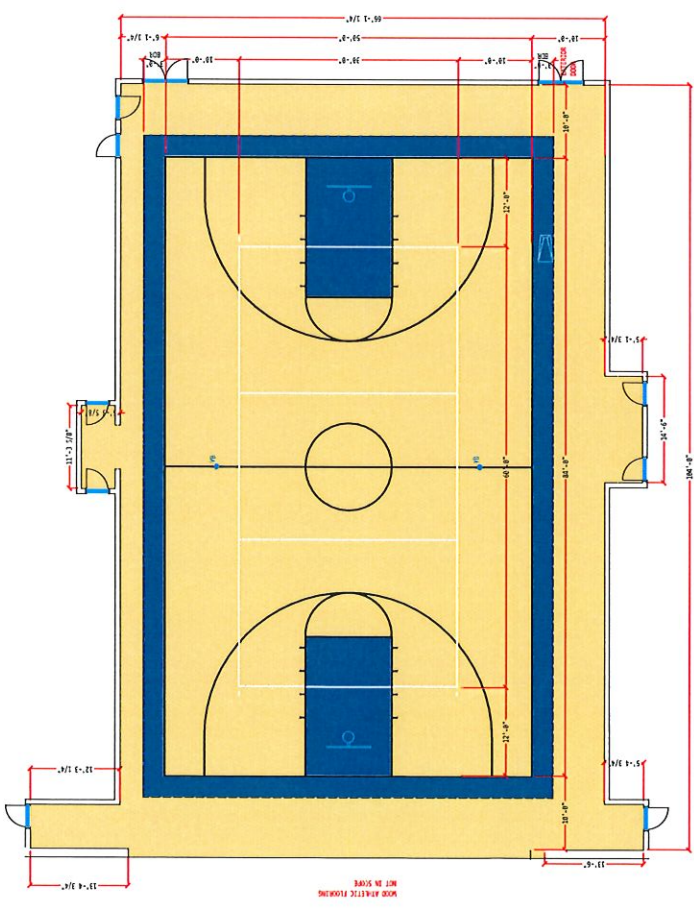
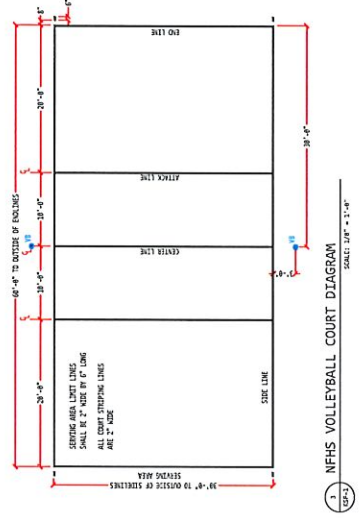
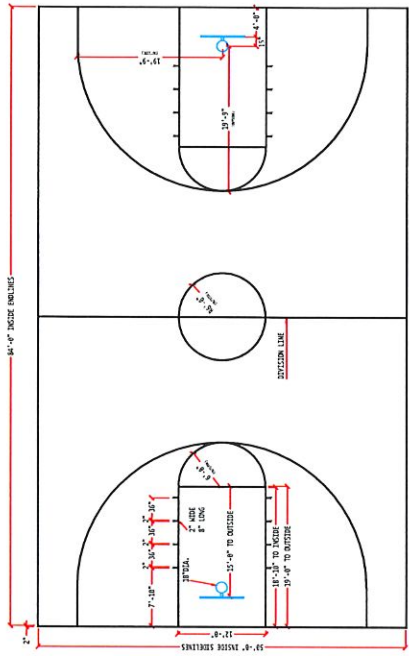
(1) THE LOCATION OF PAINTED COURT STRIPES SHALL BE AS SHOWN ON THE DRAWINGS. STRIPING SHALL BE IN ACCORDANCE WITH THE 2021 IBC AND ALL APPLICABLE CODES. STRIPING SHALL BE IN ACCORDANCE WITH THE 2021 IBC AND ALL APPLICABLE CODES.

(2) STRIPING SHALL BE IN ACCORDANCE WITH THE 2021 IBC AND ALL APPLICABLE CODES. STRIPING SHALL BE IN ACCORDANCE WITH THE 2021 IBC AND ALL APPLICABLE CODES.

**COURT STRIPING EVENTS**

**STRIPING INFORMATION:**

- \* ALL STRIPING SHALL BE IN ACCORDANCE WITH THE 2021 IBC AND ALL APPLICABLE CODES. STRIPING SHALL BE IN ACCORDANCE WITH THE 2021 IBC AND ALL APPLICABLE CODES.
- \* ALL STRIPING SHALL BE IN ACCORDANCE WITH THE 2021 IBC AND ALL APPLICABLE CODES. STRIPING SHALL BE IN ACCORDANCE WITH THE 2021 IBC AND ALL APPLICABLE CODES.



PANA HIGH SCHOOL  
SYNTHETIC GYMNASIUM RENOVATION 2021  
201 W. 8TH ST. PANA, IL. 62557