

# DULUTH PUBLIC SCHOOLS INSTRUCTIONAL DATA COACHES

Education Committee

Duluth Public Schools

Terri Huttel

Holly Bowen-Bailey

Cyndi Venberg

---

# SOMETIMES IT'S DOING THINGS DIFFERENTLY THAT MAKES THE DIFFERENCE

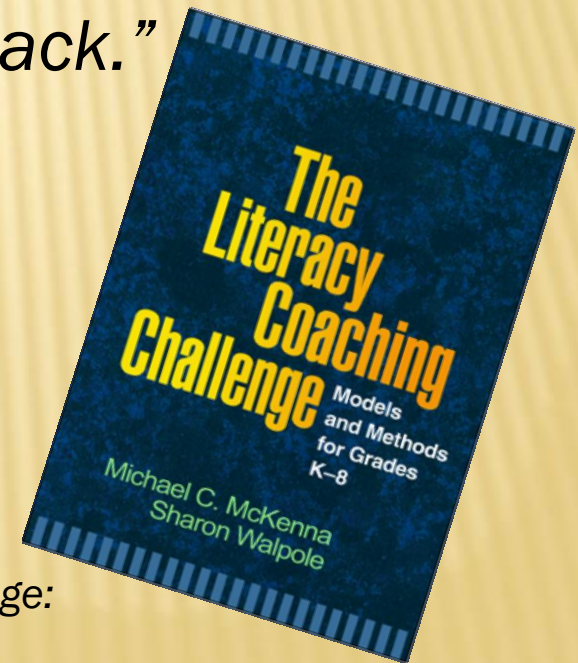


# INSTRUCTIONAL DATA COACHES

All Schools .....	Reading and Math
Elementary Schools	Each Elementary Reading/Math Coach *Lincoln, Lowell, MacArthur & Nettleton-Grant all have full-time coaches
Middle Schools	Each Middle School Literacy & Math Coach
High Schools	Each High School Literacy & Math Coach

# *How to define coaching*

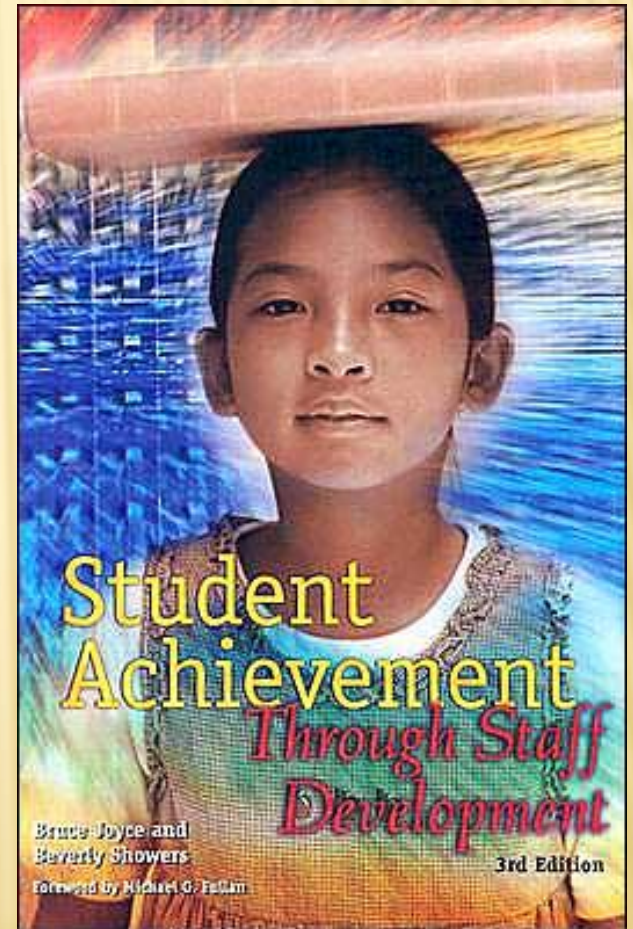
*“Coaching is a strategy for implementing a professional support system for teachers, a system that includes research or theory, demonstration, practice, and feedback.”*



McKenna, M. C., & Walpole, S. (2008). *The literacy coaching challenge: Models and methods for grades K-8*. New York: Guilford.

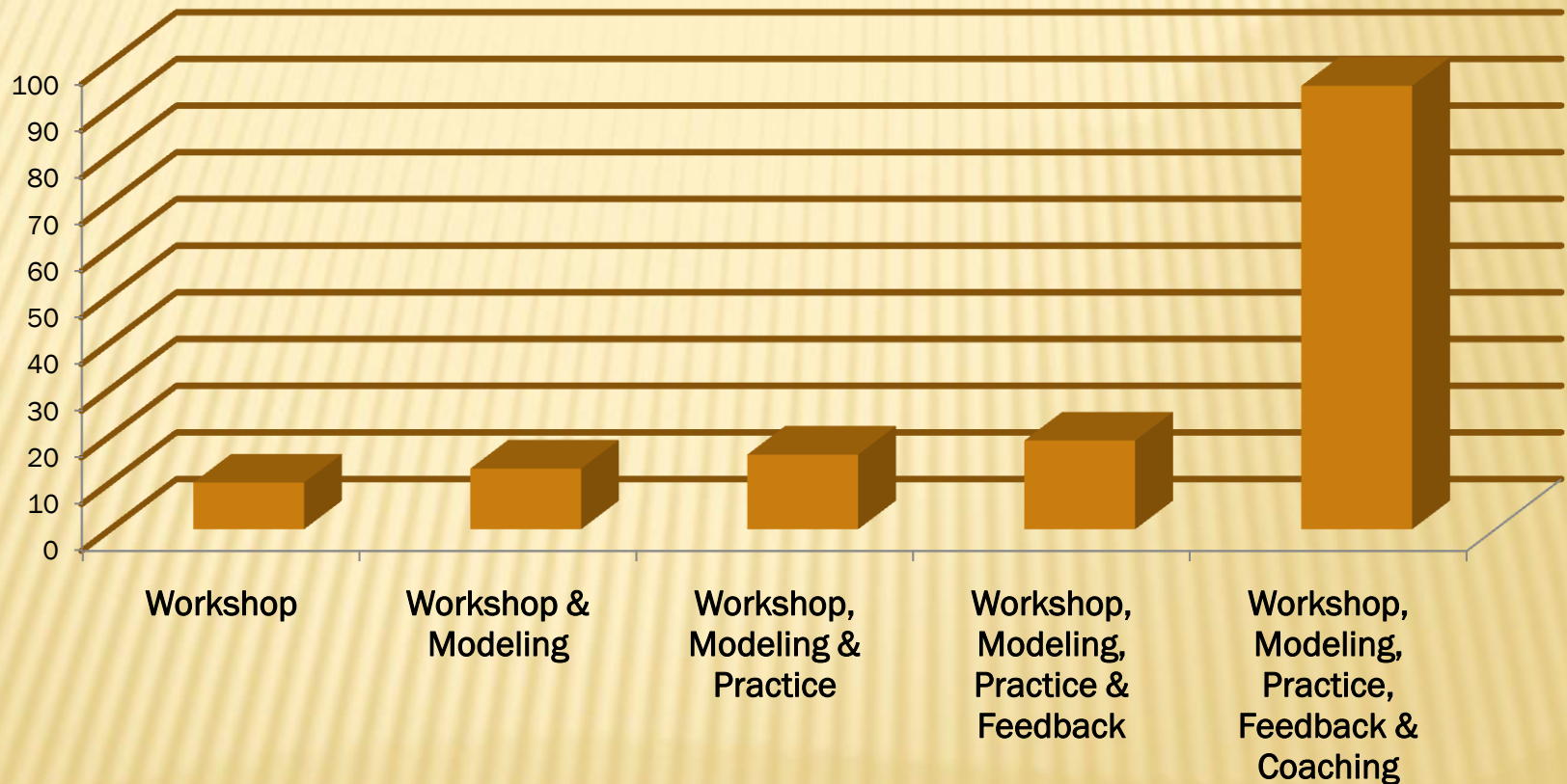
# *Bruce Joyce and Beverly Showers*

Joyce, B., Showers, B. (2002).  
*Student achievement  
through staff development.*  
Washington, DC: ASCD.



# TYPES OF PROFESSIONAL DEVELOPMENT

Rate of Transfer into Classroom Practice



# NATIONAL STAFF DEVELOPMENT STANDARDS

---

## × Content Standards

- + Equity
- + Quality Teaching

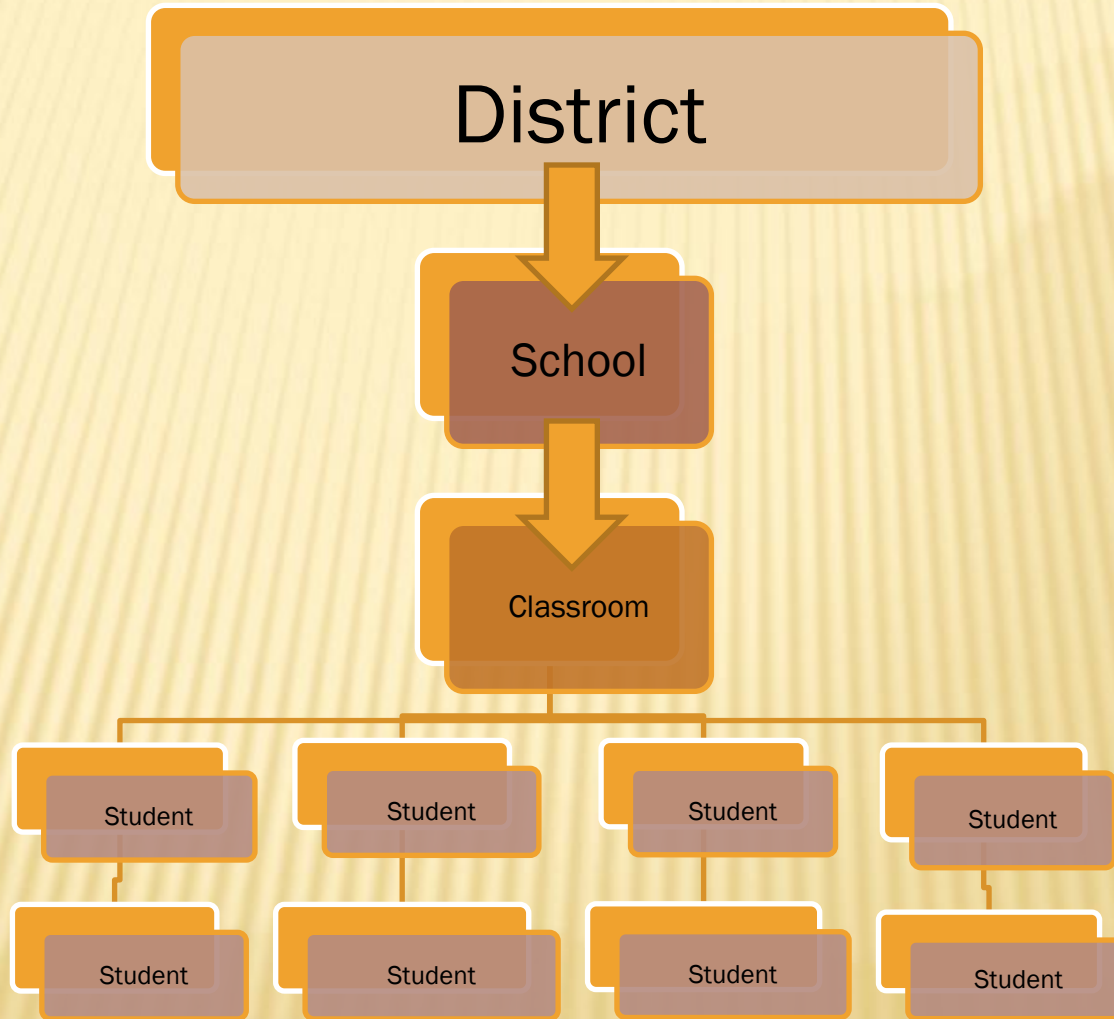
## × Context

- + Learning Communities

## × Process

- + Data Driven
- + Collaborative

# ALIGNMENT = RESULTS IN STUDENT ACHIEVEMENT





# COACHES WEAR MANY HATS



# TRAINING 1-3 YEAR PLAN

Use of Data	Curriculum and Assessment Reading	Coaching/Leadership
Creating Passion for Use Interpretation Accessing Progress Monitoring Matching Students to Interventions	Written, taught and tested Curriculum State and District Assessments Assessment for Learning Interventions	Essentials of Adult Learning Coaching Foundations Teaching Learning Cycle Theory of Change- Theory of Action Differentiation
<b>Cultural Competency</b> Achievement Gap White Privilege Culturally Inclusive Strategies	<b>Curriculum and Assessment Math</b> Written, taught and tested Curriculum State and District Assessments Assessment for Learning Interventions	

# QUESTIONS

---

