



NSBSD – Housing Needs Report to the Board



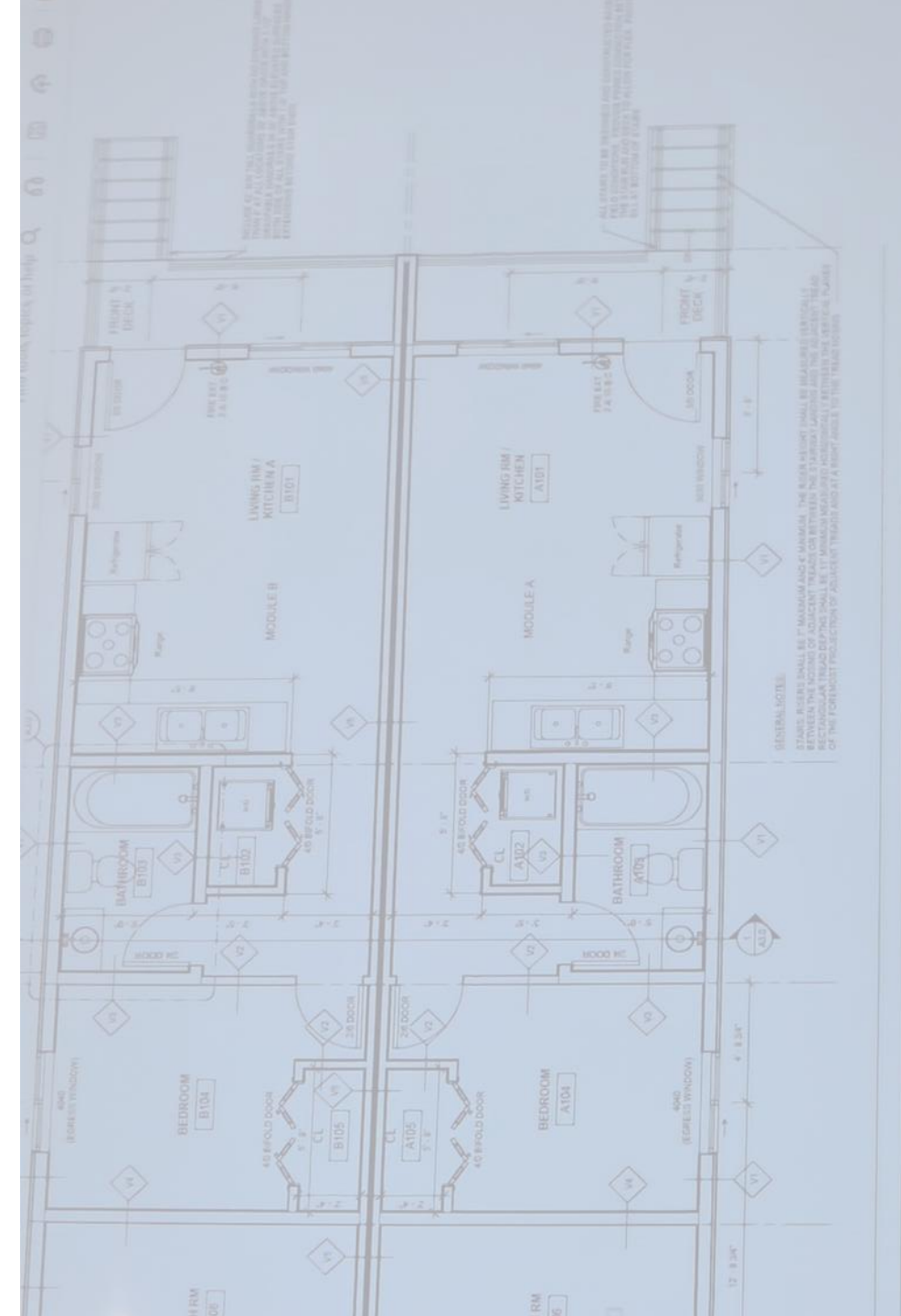
North Slope Borough
School District
nsbsd.org

BACKGROUND

As the District continues to grow and revitalize programs for the benefit of students, our housing supply is under increasing strain.

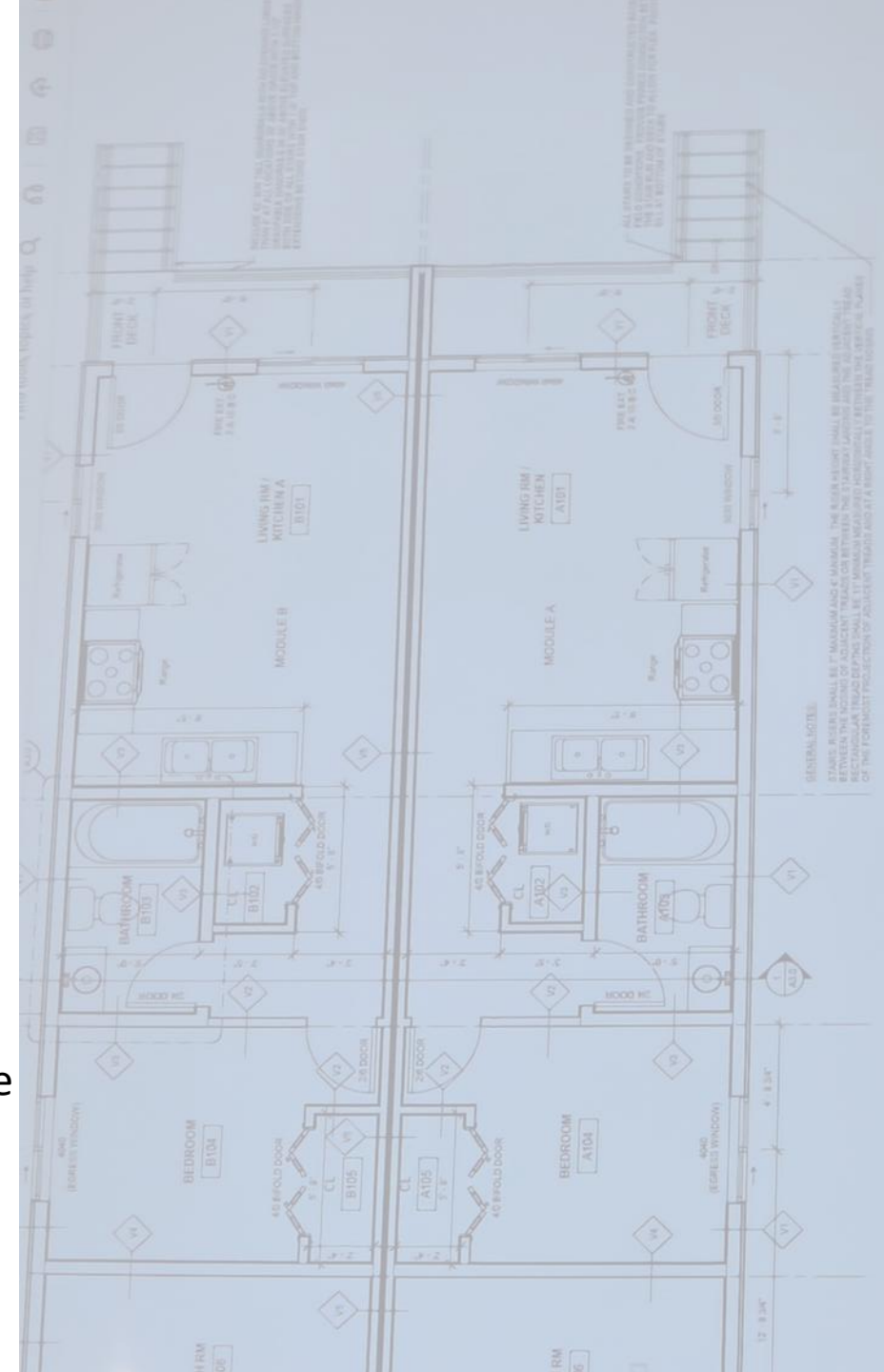
The following downward pressures are impacting existing housing stock:

- New interventionist teaching positions created to address literacy & numeracy
- New ILT positions created to address Iñupiaq language and culture fluency
- New SEL positions created to deliver wellbeing support to students
- New CTE/VocEd positions created to support village wide CTE
- Aging stock requiring repairs
- New teachers requesting non-share housing at a time of intense competition in teacher hiring



ACTION TAKEN TO DATE

- In FY 2025 the Administration attended the NSB Housing Summit to participate in a discussion about housing needs across the Slope. Presentations were made by multiple vendors and the District met with a number of organizations to discuss housing and construction training programs for students.
- In FY 2025, the Board approved and the District purchased a single residence connex home for Kali school. In FY2026, the Board and Administration visited NANA Construction in Big Lake to view their factory and learn more about their housing model and examples of housing built in Kotzebue and Nome
- In FY2026 members of the Board visited a newly constructed TNHA house in Ulguniq, after which the Administration met with TNHA to learn more about their housing model.
- In FY2026 the administration visited a partially completed multi-room residence and a ready to occupy residence in Anaktuvak Pass and have a general contractor booked to assess both residences.

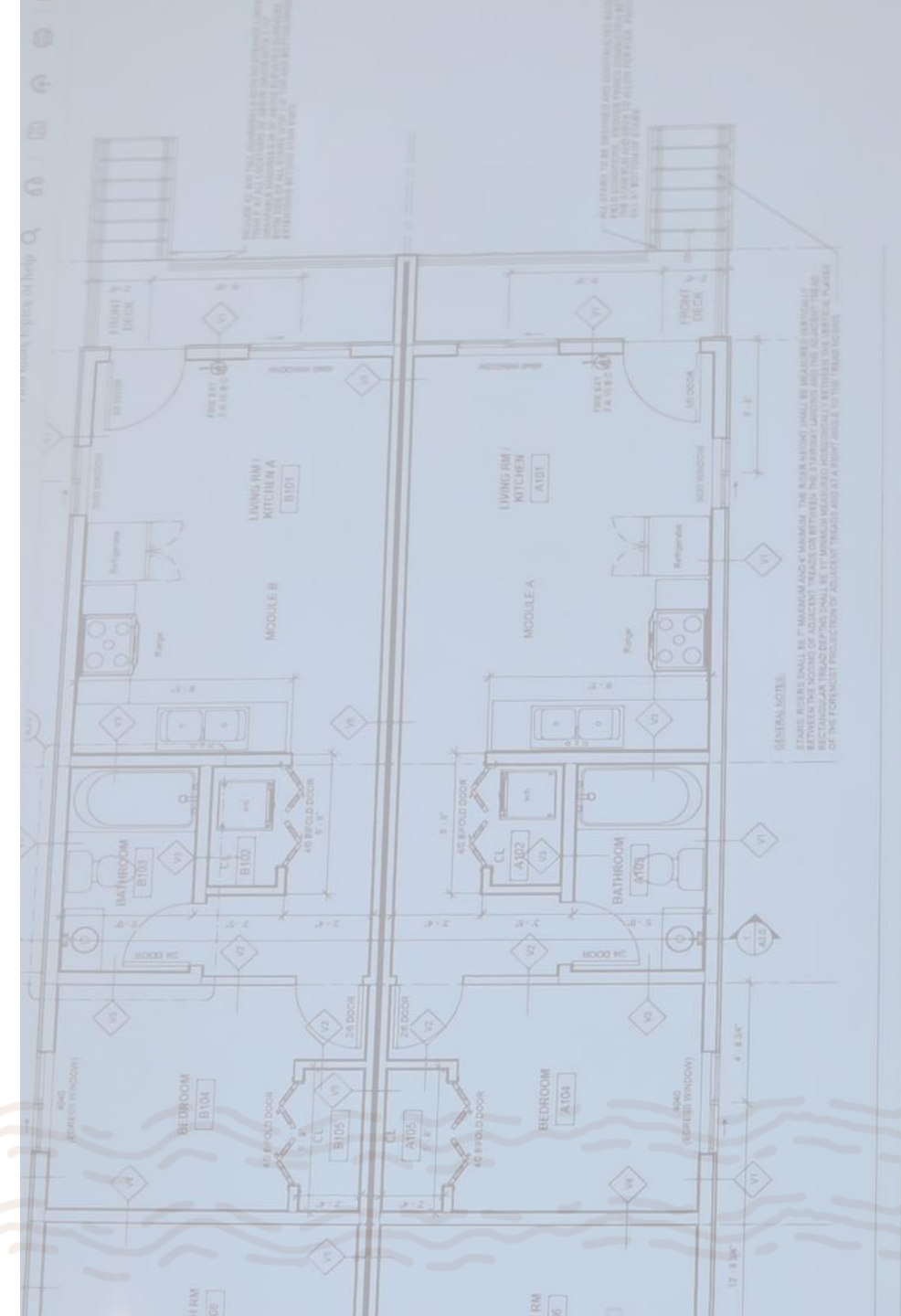


RFP Recommendation

To address current and future staffing needs and mitigate costly repairs (present & future), the M&O Department have recommended to the Superintendent that in the event revenues are available in this fiscal year, the District put out an RFP for proposals and/or seek to acquire housing that is available and suitable in villages.

Locations requiring immediate housing are:

- Tikigaq School
- Nunamiut School
- Kali School
- Aḷak School



Housing Examples





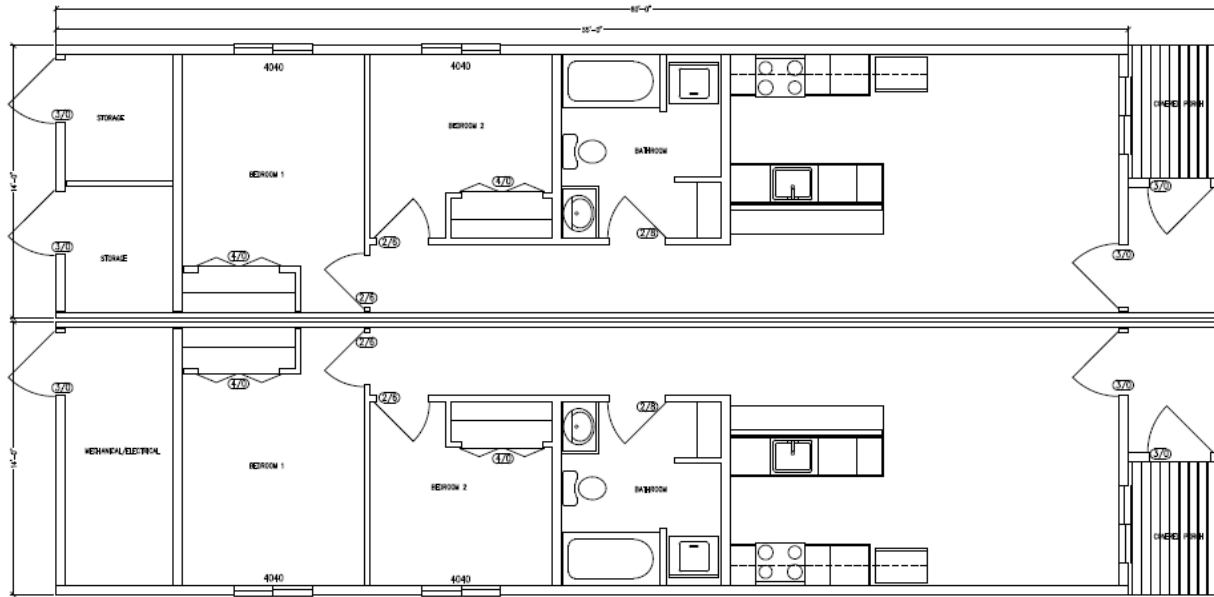
Kali School – Residential Connex Box





AKP Existing Residential House & partially finished 4 person shared living 'apartment'.



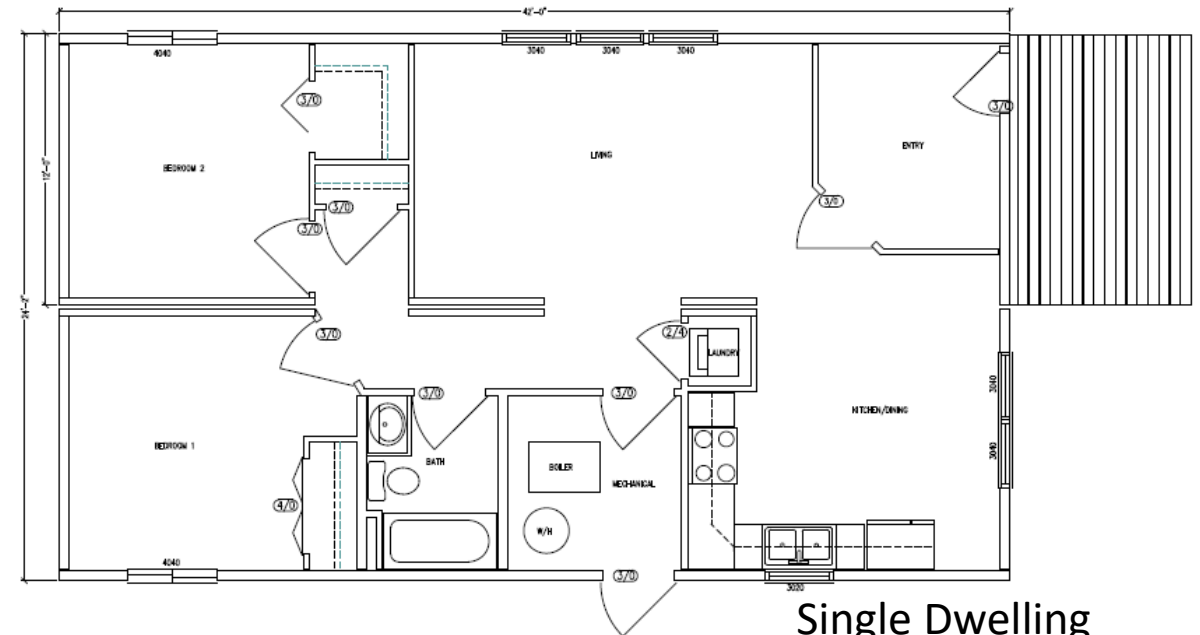


2 BED 1 BATH DUPLEX 1,600 SF
1/4" = 1'-0"

Duplex



Modular option can be custom designed based on need. Can be built in 3-4 weeks.



Single Dwelling



Built onsite: 2-3 months to complete.



SITE NEEDS



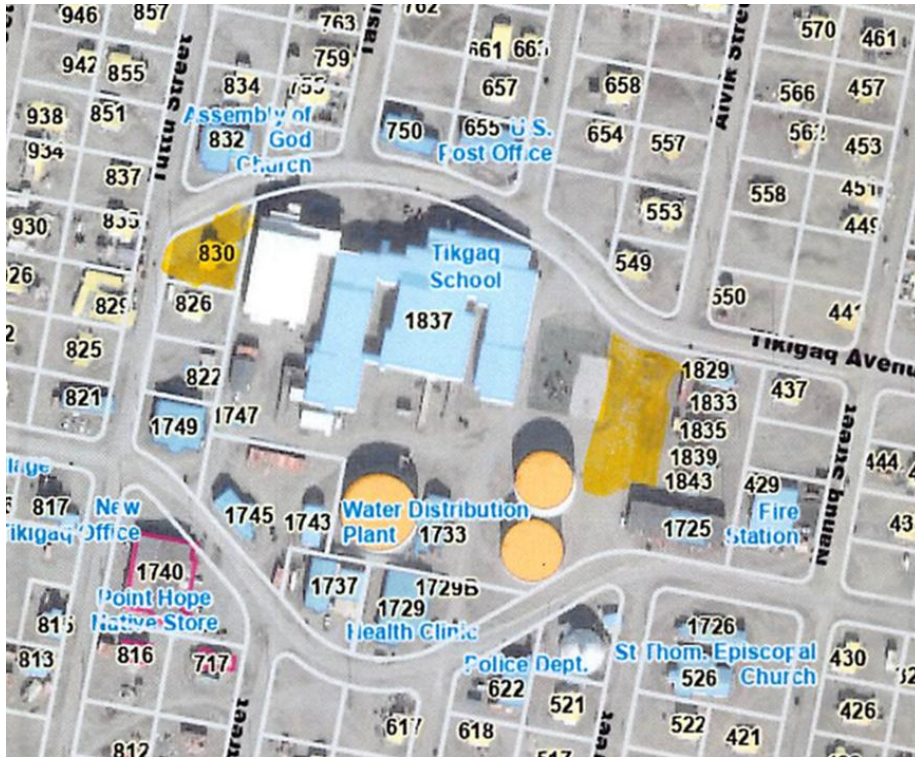
TIKIGAQ SCHOOL

Housing Need recommendations:

- 2 Duplexes: each with shared boiler, water, wastewater. Approximately 15'x62'x14'

OR

- 2 Single Family Homes with 3 bedrooms.



KALI SCHOOL

Housing Needs Include:

- 1 Duplexes each with shared boiler, water, wastewater. Approximately 15'x62'x14'

OR

- 2 Single Family Homes with 2-3 bedrooms.



ULGUNIQ ALAK SCHOOL



Housing Needs Include:

- 2 Duplexes each with shared boiler, water, wastewater. Approximately 15'x62'x14'

OR

- 2 Single Family Homes with 2-3 bedrooms.



NUIQSUT TRAPPER SCHOOL

Housing Needs Include:

- 2 Duplexes each with shared boiler, water, wastewater. Approximately 15'x62'x14'

OR

- 2 Single Family Homes with 2-3 bedrooms.



ANAKTUVUK PASS – NUNAMIUT SCHOOL



Housing Needs Include:

- 2 Duplexes each with shared boiler, water, wastewater. Approximately 15'x62'x14'

OR

- 1 Single Family Homes with 2-3 bedrooms.



ANAKTUVUK PASS – NUNAMIUT SCHOOL



Housing Opportunities:

- Partially built to be finished out and made into 6-8 single living spaces with own shower and toilet.
- Shared kitchen and large living spaces
- 6 single units and 2 itinerant style quarters, with own entry



ANAKTUVUK PASS – NUNAMIUT SCHOOL



Housing Opportunities:

- The small house is a 1 bedroom 1 bath, the second big house is framed to be an 8 bedroom property. 4 bedrooms upstairs with a living room area and 4 bedrooms downstairs with room for a kitchen and bath. Electric to both homes. Small – 800SF; Large – 6,000sf



ANAKTUVUK PASS – NUNAMIUT SCHOOL



Housing Opportunities:

- Single unit can be transitioned into Itinerant quarters or single family use. Currently has a kitchen, bathroom, and bedroom. Can add an extra bedroom.
- Heavily insulated but will need drywall and walls to be installed to customize needs.

