



ENROLLMENT PROJECTION 2012-13

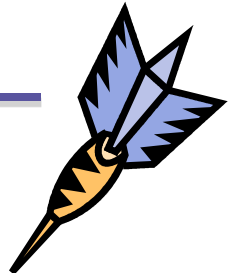
Independent School District 877
Buffalo-Hanover-Montrose

November 28, 2011

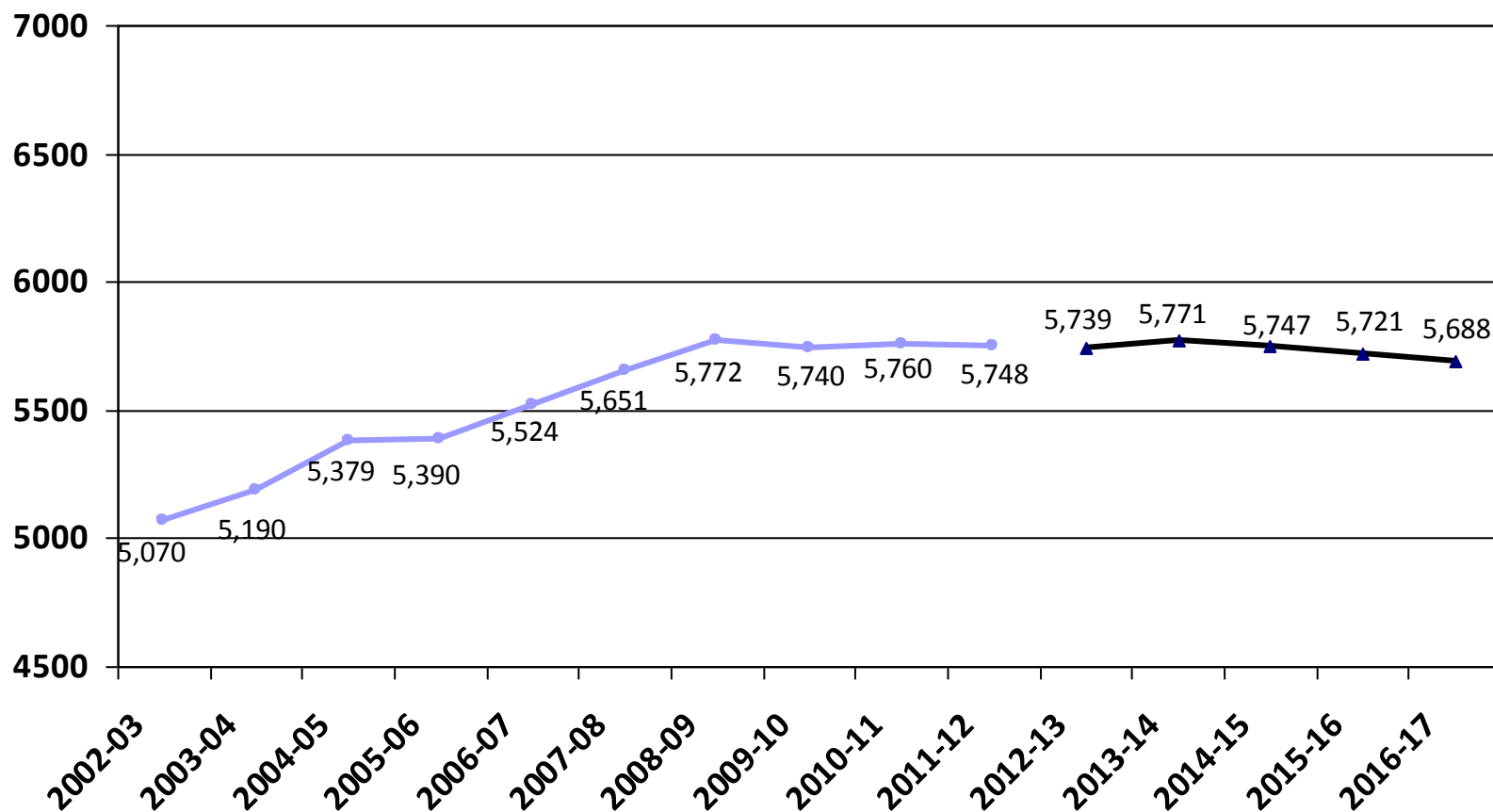


Enrollment Projection Report

- Review of K-12 enrollment as of Oct. 1st
- Resident enrollment
- Open enrollment & tuition
- Nonpublic enrollment
- Fall vs. spring enrollment
- Review 2011-12 enrollment projection
- 2012-13 enrollment projection



Historical and 2012-13 Projected K-12 Enrollment as of Oct. 1st



Review of K-12 Enrollment as of Oct. 1st

- The school district growth trend came to a halt in the 2009-10 school year and we are slightly behind with the projection for 2011-12.
- The five-year growth average is decreasing and currently at 42 students/year or .76%.
- Total enrollment growth for the past five years is 210 students or 3.8%.

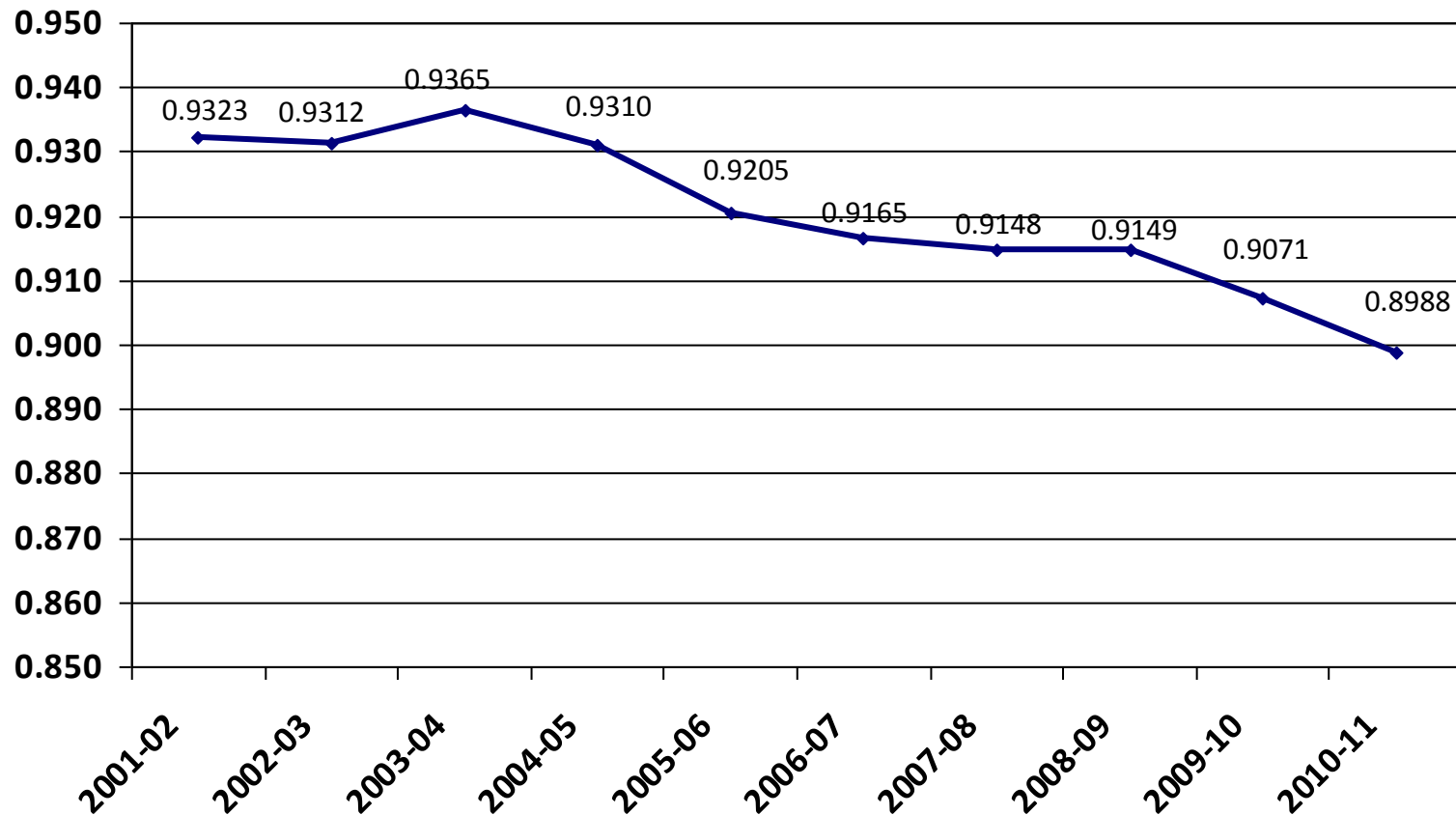
	2007-08	2008-09	2009-10	2010-11	2011-12
K-12 enrollment	5,651	5,772	5,740	5,760	5,734
Change over prior year	127	121	-32	20	-26
% change	2.30%	2.14%	-0.55%	0.35%	-0.45%

Total Resident Students Enrolled in ISD 877 as of June 30th

- BHM's resident population displays similar trends as the school district's enrollment

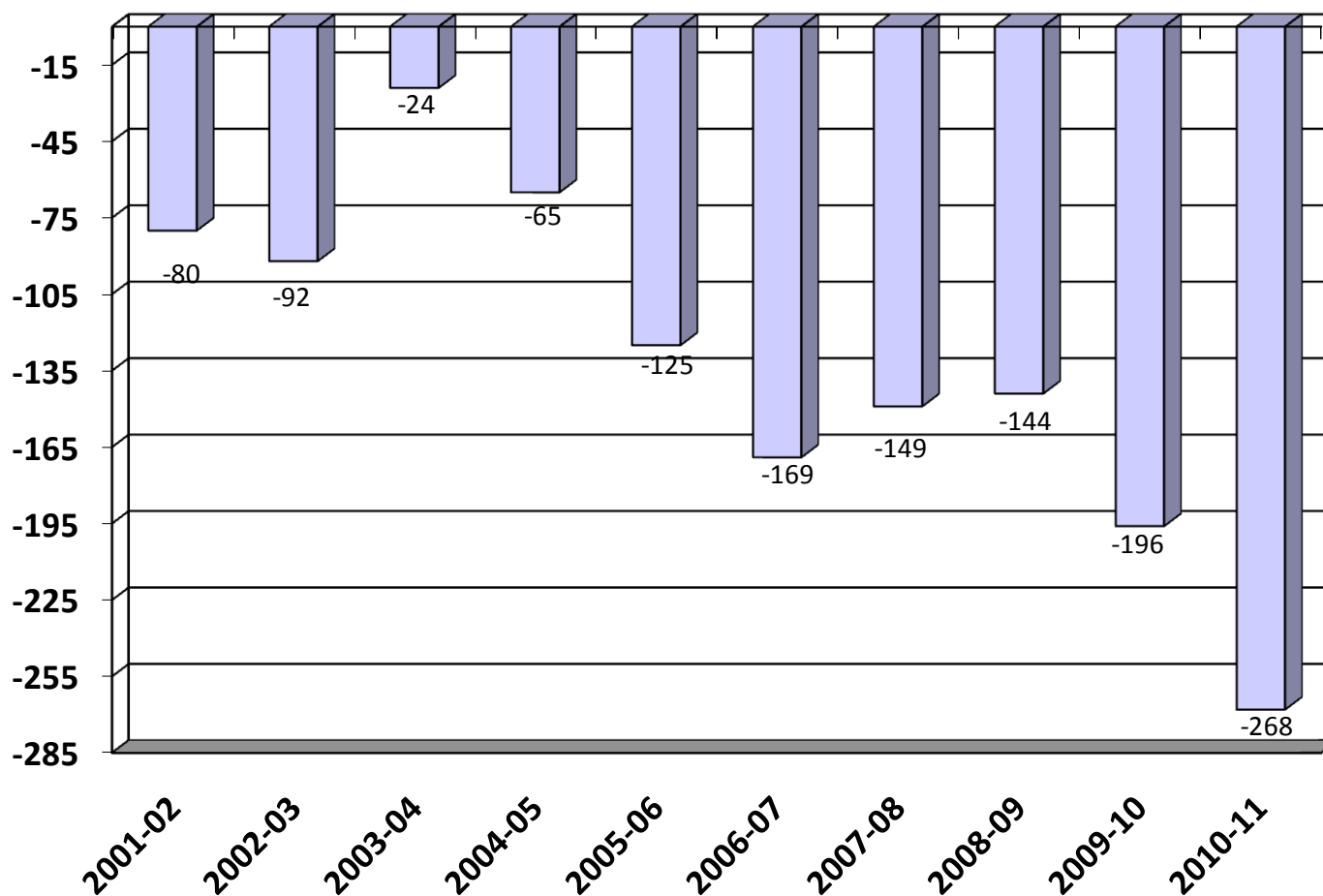
	2006-07	2007-08	2008-09	2009-10	2010-11
Residents served	5,239	5,301	5,396	5,369	5,394
Residents going elsewhere	478	494	501	550	607
Total Residents	5,717	5,795	5,897	5,919	6,001
Change over prior year	206	78	102	22	82
% change	3.7%	1.4%	1.8%	0.4%	1.39%

Total Resident Students Enrolled in ISD 877 as of June 30th



Open Enrollment & Tuition

Net Gain/Loss as of June 30th





2010-11 Open Enrollment & Tuition Gain/Loss by District as of June 30th

District	In	Out	Net
Delano	5	-112	-107
Rockford	25	-101	-76
Watertown-Mayer	1	-42	-41
Wayzata	0	-15	-15
Elk River	22	-30	-8
Orono	0	-5	-5
Osseo	25	-23	2
Howard Lake-Waverly-Winsted	12	-4	8
Anoka-Hennepin	14	-3	11
Annandale	16	-2	14
Monticello	29	-15	14
Maple Lake	51	-37	14
St. Michael-Albertville	95	-56	39

Other Tuition

WTC -40

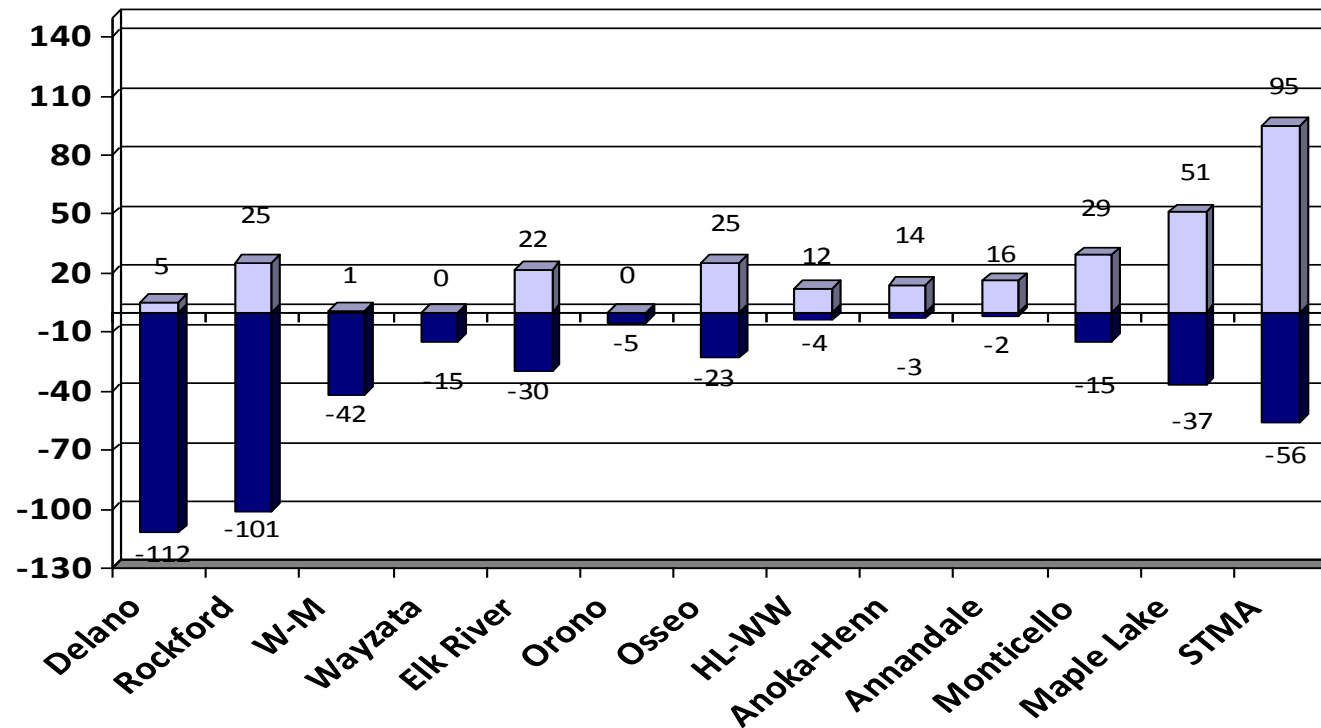
MAWSECO -9

Mn Transitions -9

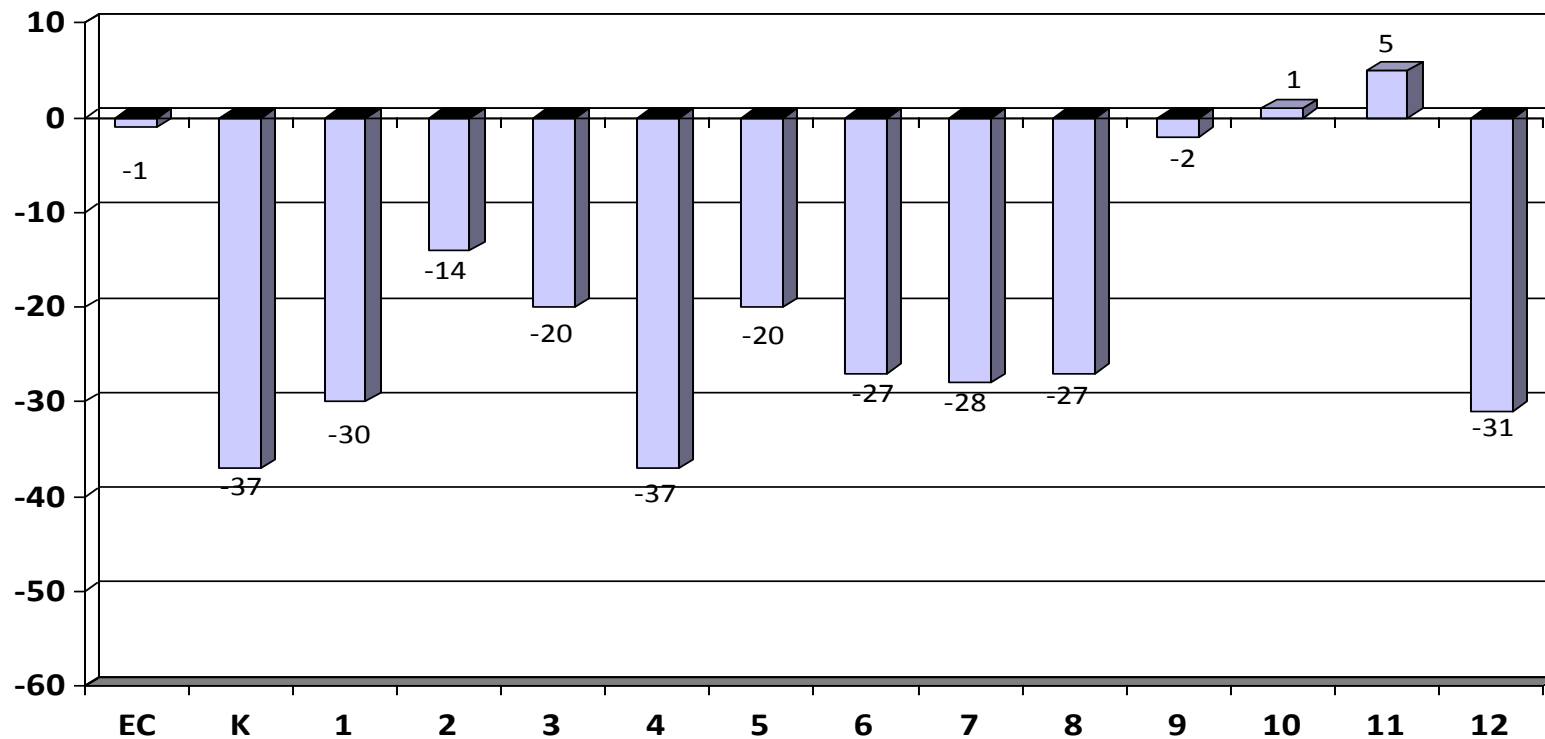
Swan River Charter -10

Houston (online) -22

2010-11 Open Enrollment & Tuition Gain/Loss by District as of June 30th



2010-11 Open Enrollment & Tuition by Grade as of June 30th

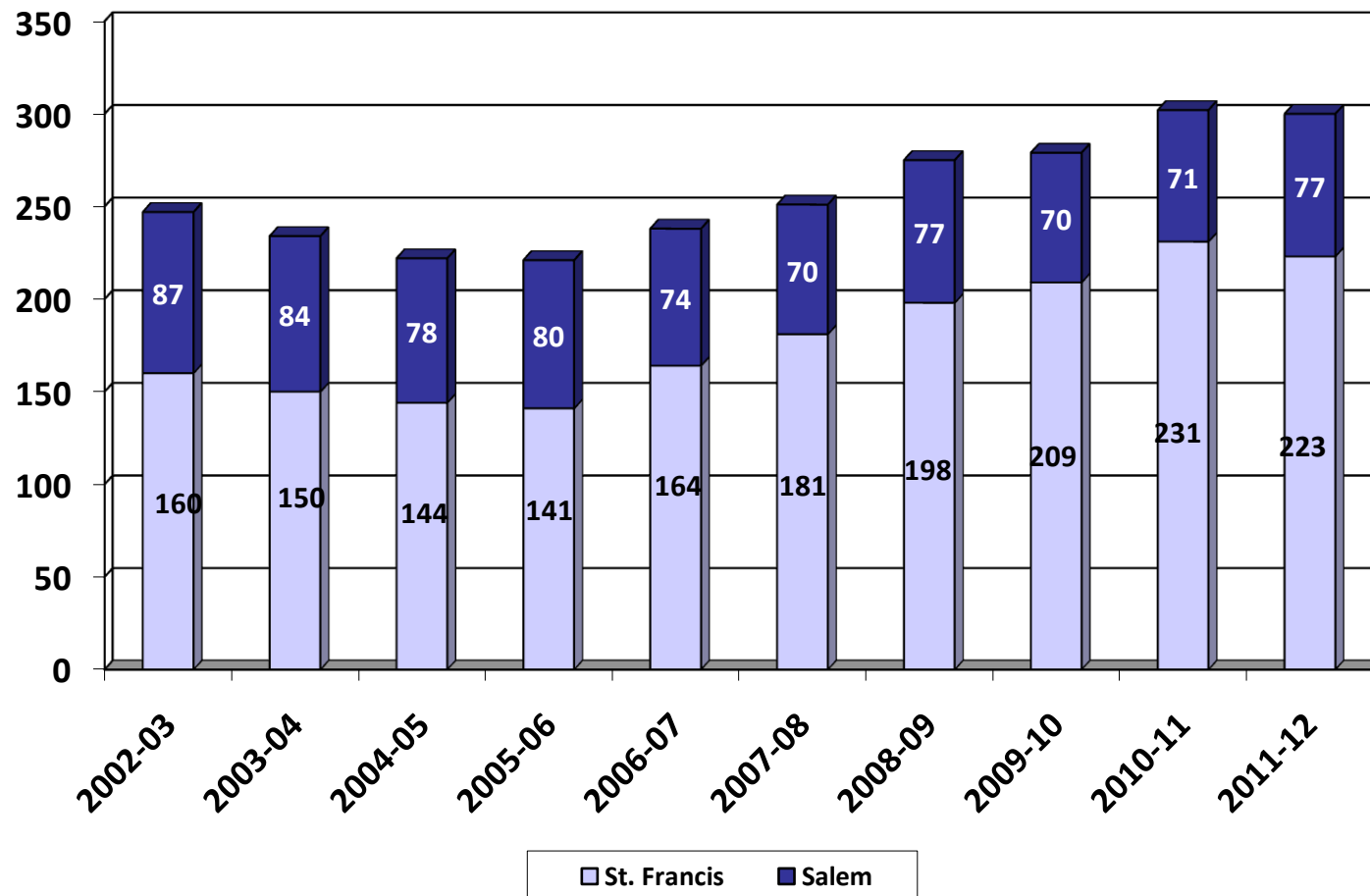


Nonpublic History

- Two nonpublic schools in the BHM district: St. Francis Xavier, Buffalo and Salem Lutheran, Loretto.
- Both schools serve students from kindergarten through 8th grade.

	02-03	03-04	04-05	05-06	06-07	07-08	08-09	09-10	10-11	11-12
Salem	87	84	78	80	74	70	77	70	71	77
St. Francis	160	150	144	141	164	181	198	209	231	223
Total	247	234	222	221	238	251	275	279	302	300
# Change	6	-13	-12	-1	17	13	24	4	23	-2
% Change	2.5%	-5.3%	-5.1%	-0.5%	7.7%	5.5%	9.6%	1.5%	8.2%	-.7%

Nonpublic History



2010-11 Enrollment

Fall vs. Spring

- Historically, the district's K-12 enrollment decreases from October 1 to June 1.
- Most of the enrollment drops happen in grades 9-12.

	Oct. 1st, 2010	Jun. 1st, 2011	Net
K	455	456	1
Gr. 1-5	2,202	2,191	-11
Gr. 6-8	1,277	1,267	-10
Gr. 9-12	1,826	1,763	-63
Total	5,760	5,677	-83

Historical Enrollment

Fall vs. Spring

- The district had one year of enrollment growth during the year (2001-02) and one flat year (2006-07).

	K	Gr. 1-5	Gr. 6-8	Gr. 9-12	Net
2001-02	2	33	6	-35	6
2002-03	-1	33	14	-51	-5
2003-04	5	-37	-3	-49	-10
2004-05	-1	0	3	-55	-53
2005-06	4	-1	-9	-56	-62
2006-07	-2	-25	10	-33	0
2007-08	9	3	3	-55	-40
2008-09	0	0	-24	-84	-108
2009-10	-2	14	-17	-58	-63
2010-11	1	-11	-10	-63	-83

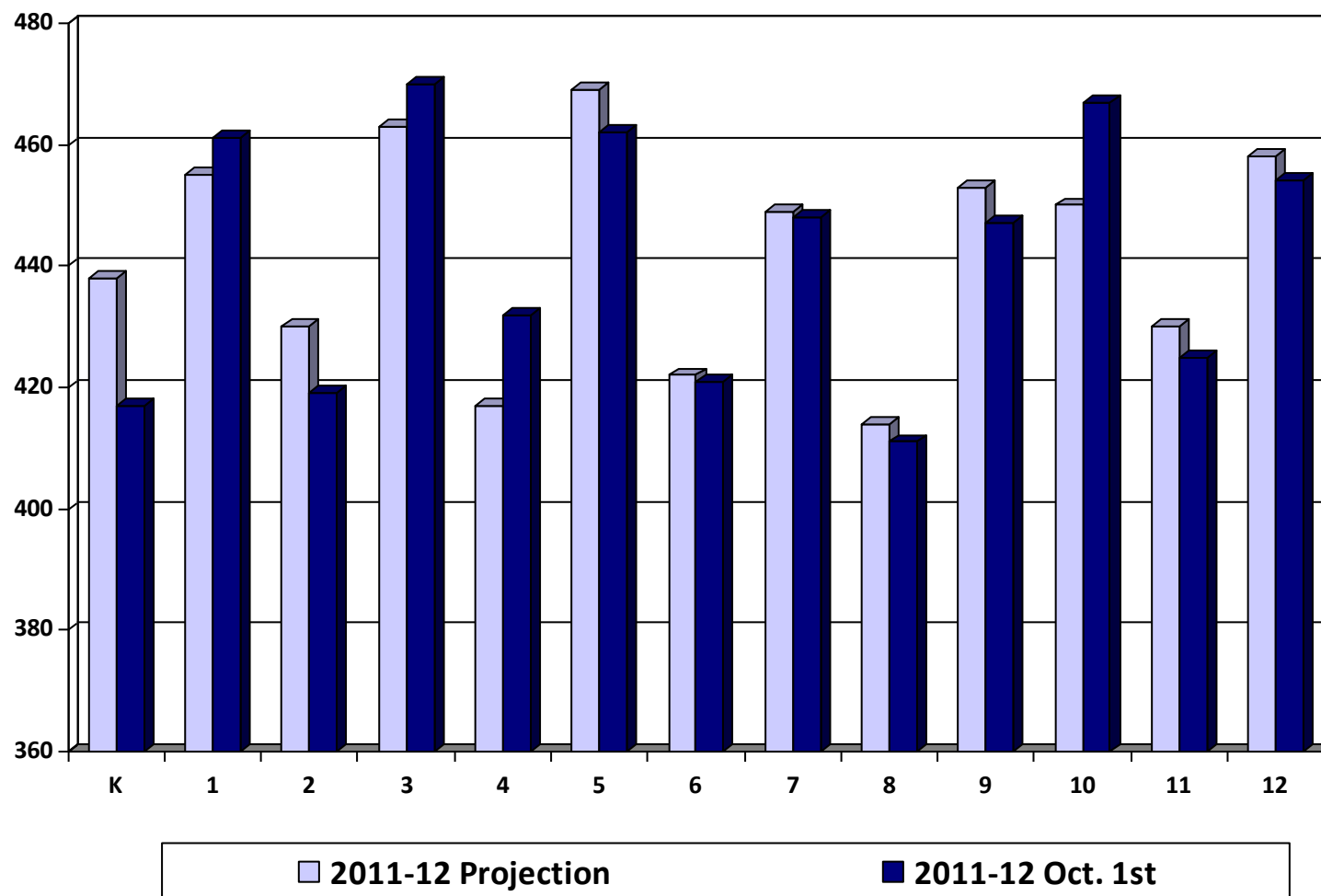
Review of 2011-12 Enrollment Projection

- Last year's enrollment projection was over-estimated by 14 students.
- Our internal monthly enrollment reports adjust down post-secondary and shared time students.
- The official Oct. 1st MARSS submission by MDE will report a higher enrollment with post-secondary and shared time students.

	2011-12 Projection	2011-12 Oct. 1st	Difference
K	438	417	-21
Gr. 1-5	2,234	2,244	10
Gr. 6-8	1,285	1,280	-5
Gr. 9-12	1,791	1,793	2
Total	5,748	5,734	-14

Review of 2011-12

Enrollment Projection by Grade



Enrollment Projection Data

- The district uses the Schoolfinances.com enrollment projection model.
- The model allows schools to develop enrollment projections based on three different sets of data:
 - ☐ **October 1st MARSS submission**
 - ☐ **End of Year ADM** is generally used for financial forecast
 - ☐ **District Data** allows schools to enter enrollment history taken at any time, resident ADM or any other historical data by grade

Kindergarten Projection Methods

- **Hold constant** maintains the 2011-12 kindergarten level.
- **Linear projection** is a straightforward mathematical projection based on nothing more than the past five years of data.
- **County birth method** uses the total number of live births in Wright County and examines what percentage of those births enroll in kindergarten. The projection is based on the average percentage of the last four years.
- **Zip code method** examines the zip codes in the district and uses a linear projection of live births on the last four years of data and computes the projected enrollment based on the lowest, average, and highest ratios.

Kindergarten Projection Methods

Birth Year	Kdgn Enroll Year	Wright Co. Births	Actual Kdgn Enrollment	% of Wright Co. Births Enrolled
2000	2005	1,423	413	29.0%
2001	2006	1,499	494	33.0%
2002	2007	1,679	413	24.6%
2003	2008	1,926	464	24.1%
2004	2009	1,888	434	23.0%
2005	2010	2,023	455	22.5%
2006	2011	2,152	417	19.4%
2007	2012	2,183	448*	20.5%*
2008	2013	2,095	429*	20.5%*
2009	2014	1,943	398*	20.5%*
2010	2015	1,900	390*	20.5%*

* Projected K enrollment based on County births

Kindergarten Projection Methods

■ Using Oct. 1st district data

	07-08	08-09	09-10	10-11	11-12	12-13	13-14	14-15	15-16	16-17
Actual enrollment	413	464	434	455	417					
Hold constant						417	417	417	417	417
Linear projection						435	434	432	430	429
Wright Co. births						483	472	443	426	425
Zip code method - L						451	435	398	378	366

Enrollment Projection Methods

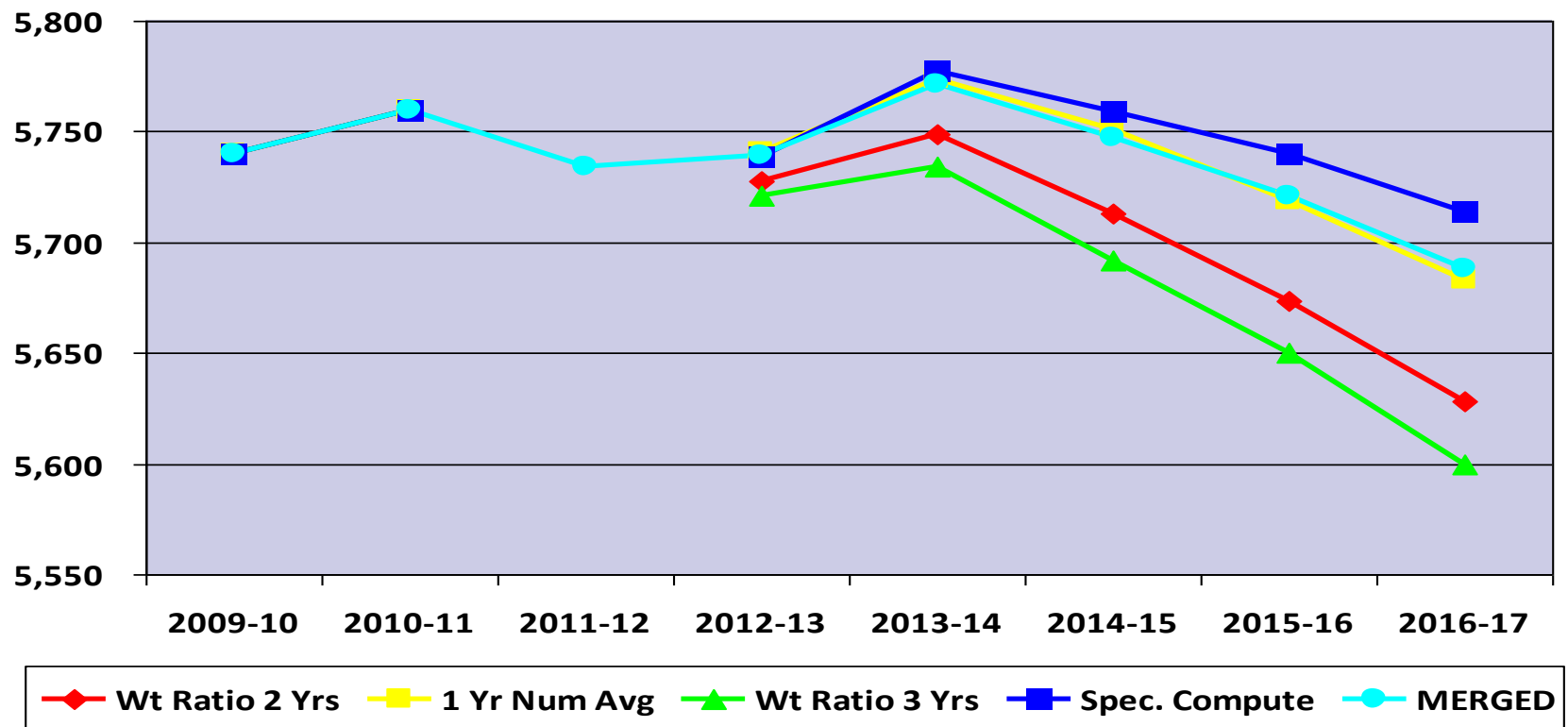
- After the kindergarten enrollment projection is complete, the overall K-12 enrollment is determined by a variety of methods:
 - ☐ Cohort Survival Method
 - ☐ Weighted Cohort Survival Method
 - ☐ Numerical Survival Method
 - ☐ Weighted Numerical Survival Method
 - ☐ Merged Method

Projection Methods Comparison

- Using Oct. 1st district data, seventeen different variations were examined.
- The following five were selected for detailed analysis:

	09-10	10-11	11-12	12-13	13-14	14-15	15-16	16-17
Wt Ratio 2 Yrs	5,740	5,760	5,734	5,728	5,749	5,713	5,673	5,628
1 Yr Num Avg	5,740	5,760	5,734	5,741	5,774	5,751	5,719	5,683
Wt Ratio 3 Yrs	5,740	5,760	5,734	5,721	5,734	5,692	5,650	5,600
Spec. Compute	5,740	5,760	5,734	5,739	5,777	5,759	5,740	5,713
Merged	5,740	5,760	5,734	5,739	5,771	5,747	5,721	5,688
Max Difference				20	43	67	90	113

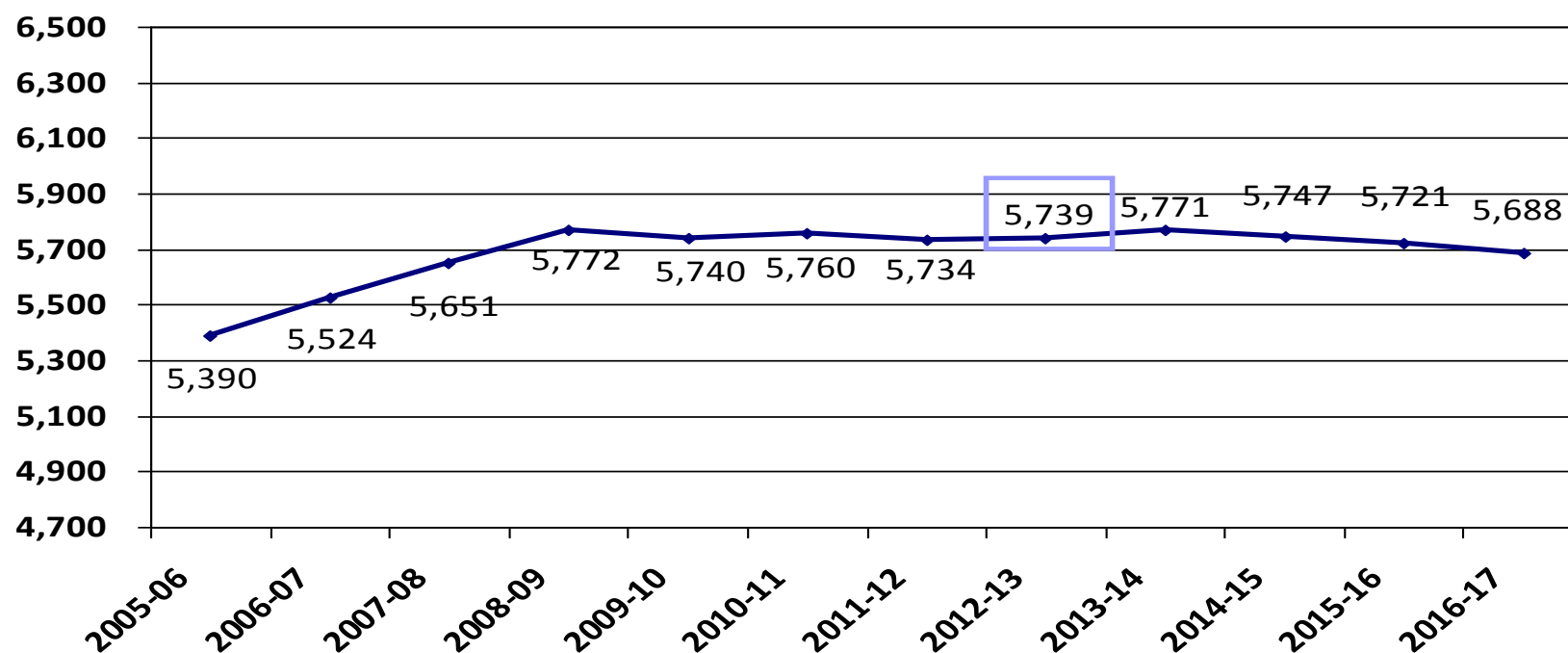
Projection Methods Comparison



2012-13 Enrollment Projection

- Factors considered: housing market, economic conditions, Wright County births, open enrollment, budget reductions, and new programs (ADED K, Quest, STEM)
- Merged Method
- K-12 Enrollment 5,739
- Increase of 5 students or 0.09%

2012-13 Enrollment Projection

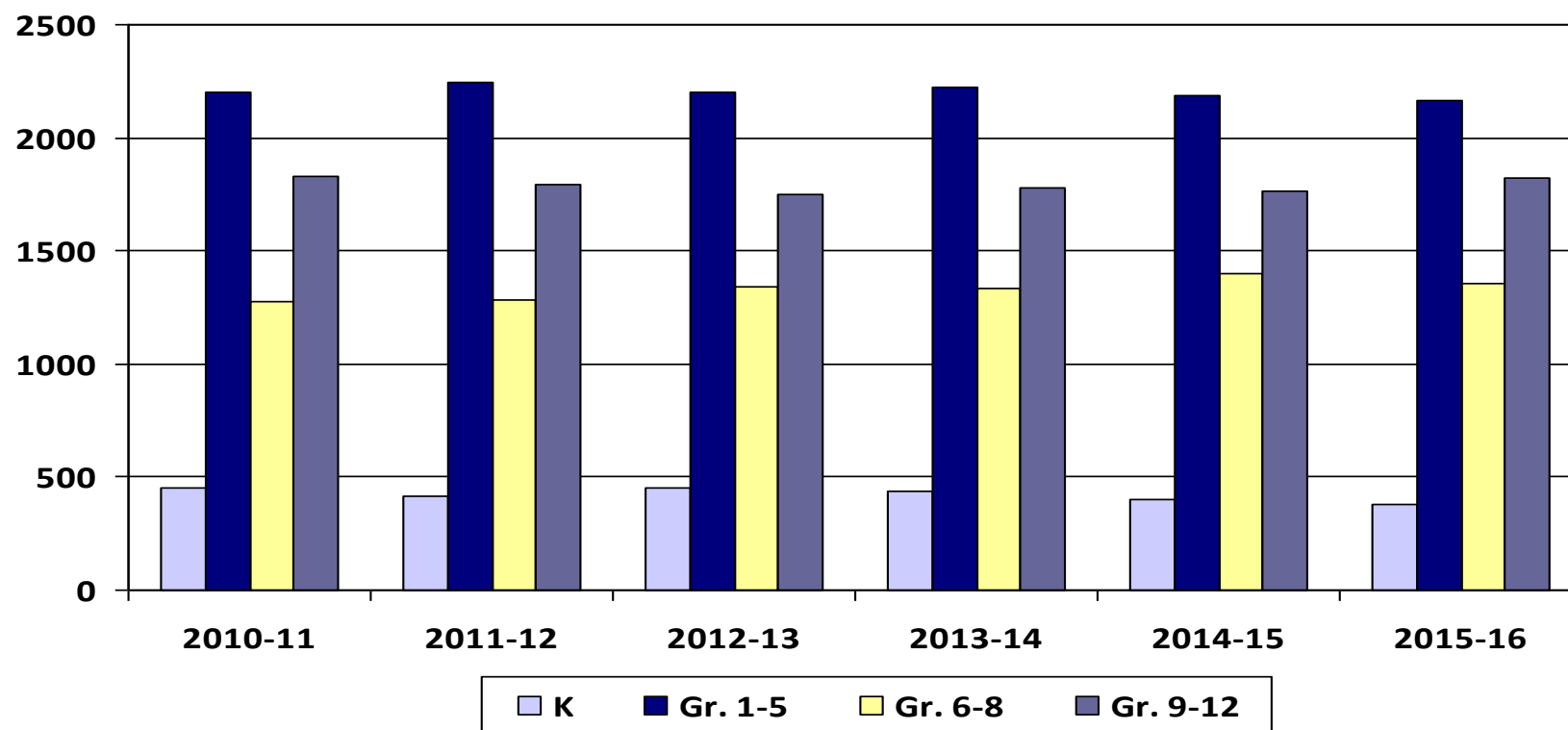


2012-13 Enrollment Projection by Grade Groupings

- With future enrollments, need to consider building capacity:
 - BHS – 1,935 PHX – 64 and PRIDE – 25
 - BCMS – 1,375
 - Elementary – 3,200

	2011-12	2012-13	2013-14	2014-15	2015-16	2016-17
K	417	451	435	398	378	366
Gr. 1-5	2,244	2,200	2,224	2,187	2,163	2,084
Gr. 6-8	1,280	1,340	1,336	1,396	1,359	1,388
Gr. 9-12	1,793	1,748	1,776	1,766	1,821	1,850
Total	5,734	5,739	5,771	5,747	5,721	5,688
		5	32	-24	-26	-33
		0.09%	0.58%	-0.42%	-0.45%	-0.58%

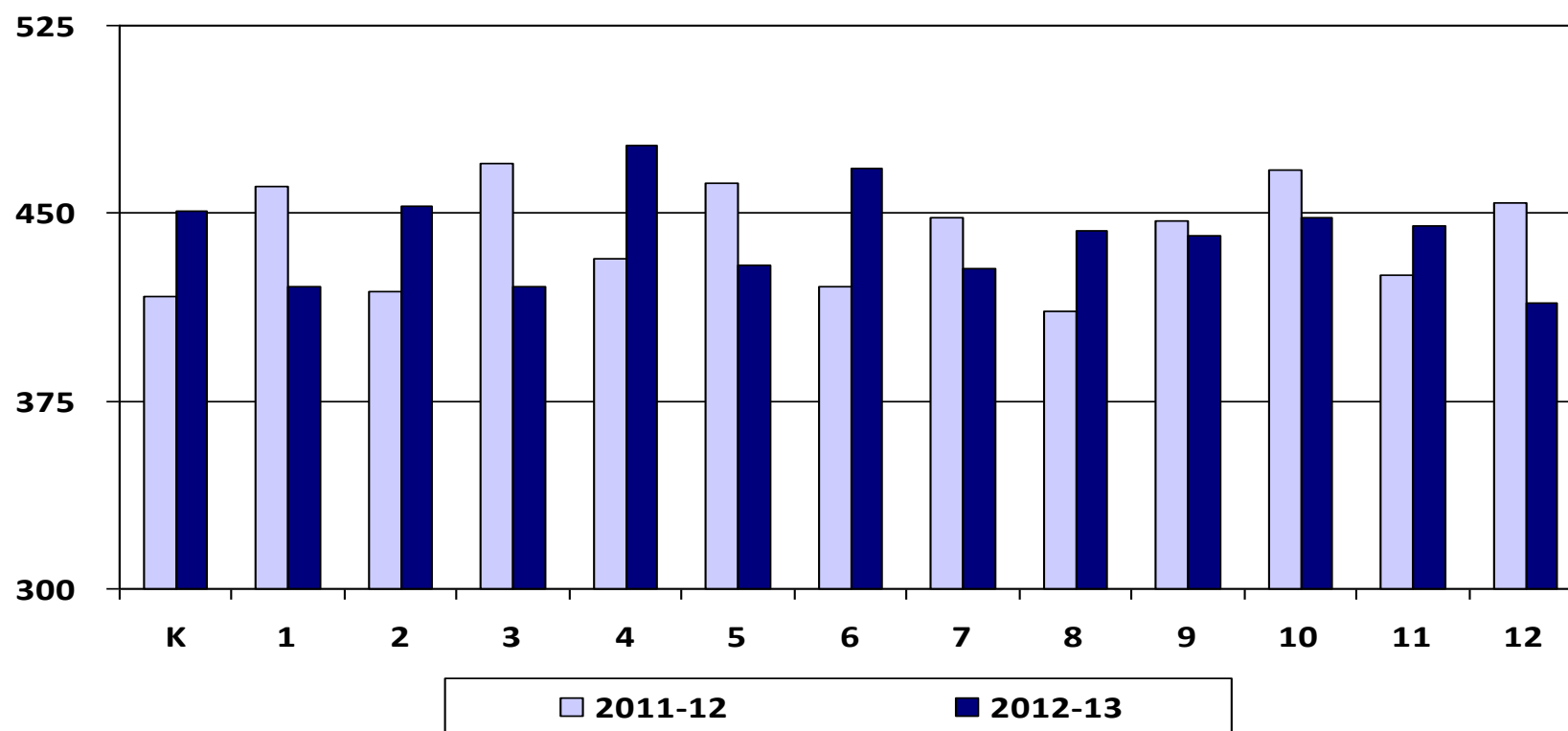
2012-13 Enrollment Projection by Grade Groupings



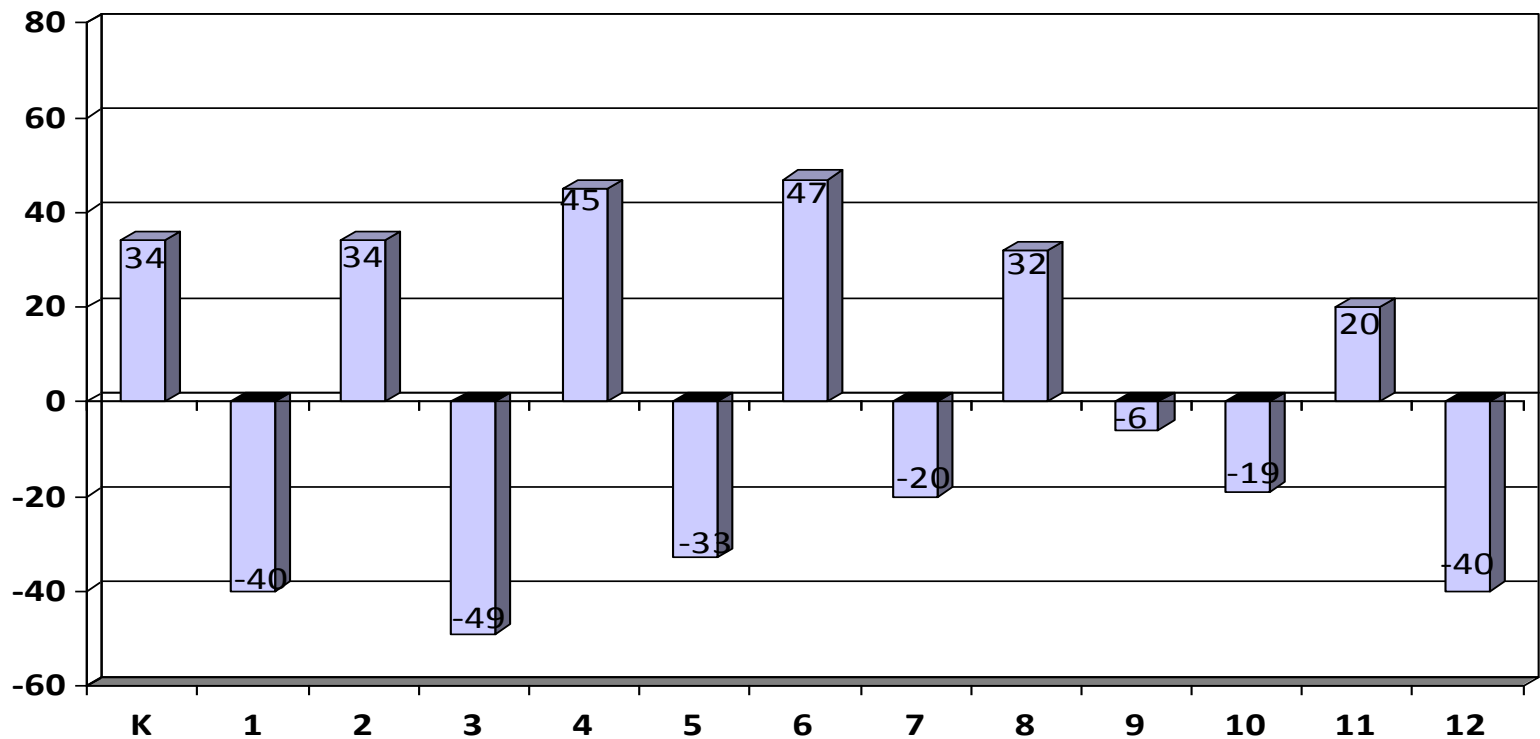
2012-13 Enrollment Projection by Grade

	2011-12	2012-13	2013-14	2014-15	2015-16	2016-17
K	417	451	435	398	378	366
1	461	421	455	439	403	382
2	419	453	414	448	432	395
3	470	421	455	415	449	434
4	432	477	426	461	421	455
5	462	429	474	424	458	418
6	421	468	436	481	431	466
7	448	428	476	444	489	438
8	411	443	424	471	439	484
9	447	441	474	455	504	470
10	467	448	442	476	455	505
11	425	445	426	419	453	433
12	454	414	434	416	409	442
Total	5,734	5,739	5,771	5,747	5,721	5,688

2011-12 & 2012-13 Enrollment Projection by Grade



2012-13 Enrollment Change by Grade



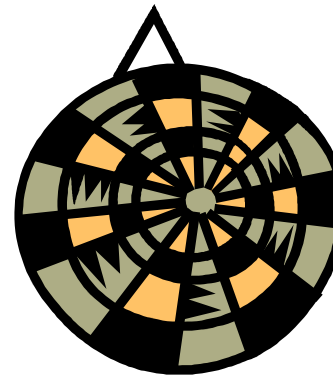
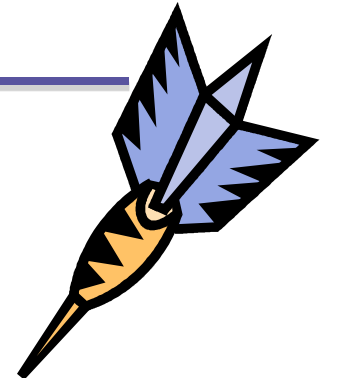
WADM Report

- The weighted average daily membership (WADM) projection shows a relatively flat projection in student aid.
- Keep in mind the district's enrollment history tends to decline from Oct. 1st to June 1st.

	2012-13		2013-14		2014-15		2015-16	
	Enroll	WADM	Enroll	WADM	Enroll	WADM	Enroll	WADM
HK	26	26	25	25	23	23	22	22
K	425	260	410	251	375	229	356	217
Gr. 1-3	1,295	1,444	1,324	1,476	1,302	1,452	1,284	1,431
Gr. 4-6	1,374	1,456	1,336	1,416	1,366	1,448	1,310	1,389
Gr. 7-8	871	1,133	900	1,170	915	1,190	928	1,207
Gr. 9-12	1,748	2,273	1,776	2,310	1,766	2,296	1,821	2,368
ECSE	111	139	107	134	98	123	93	116
M.C.P.U		5		0		4		2
Total	5,850	6,736	5,878	6,782	5,845	6,765	5,814	6,752

Conclusion

- Uncertain economic factors make enrollment projections difficult.
- BHM's enrollment is projected to decline slightly over the next three to five years.



5,739