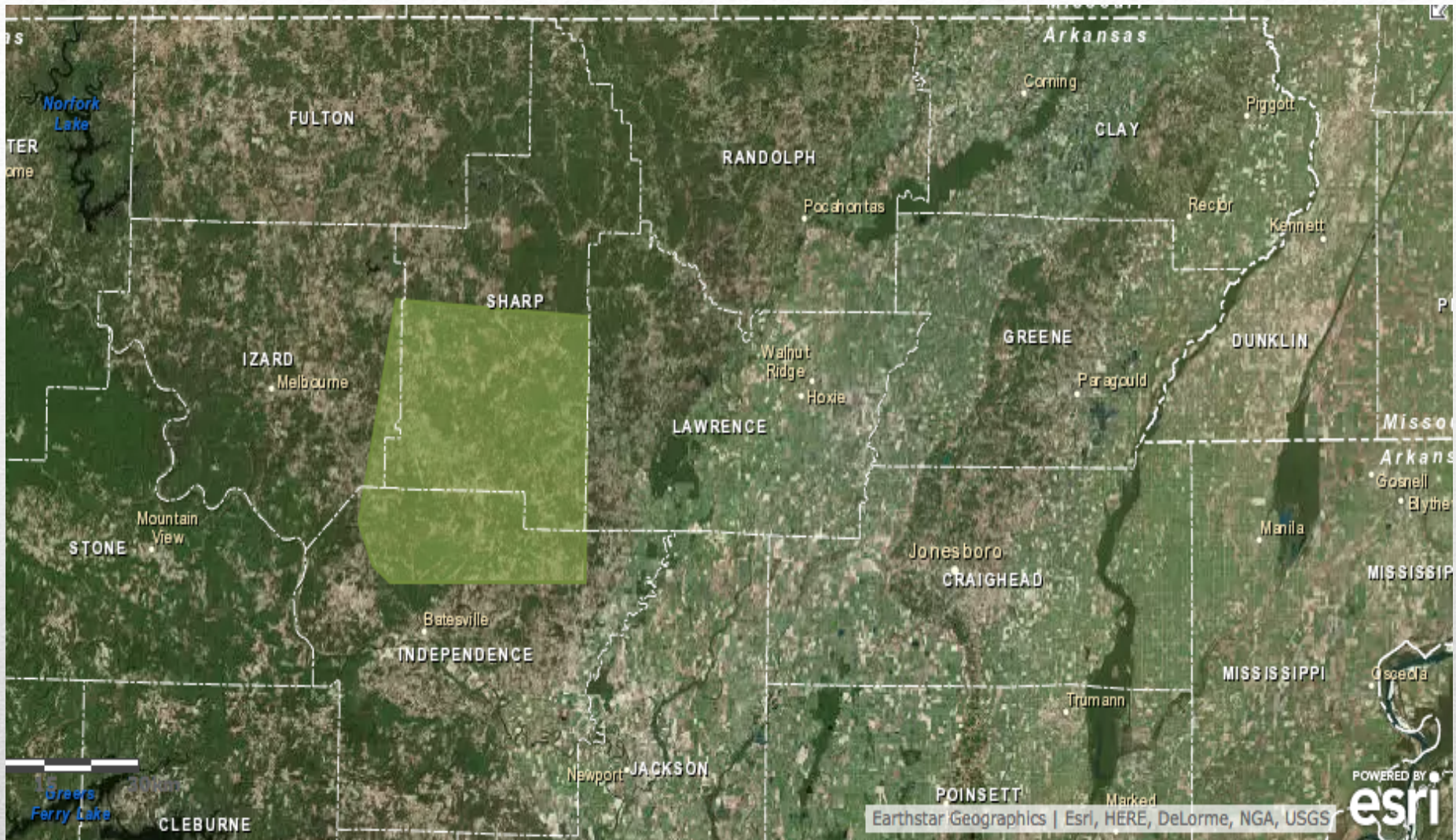


Cave City Middle School Career and Collegiate Preparatory

Cave City Middle School Conversion Charter

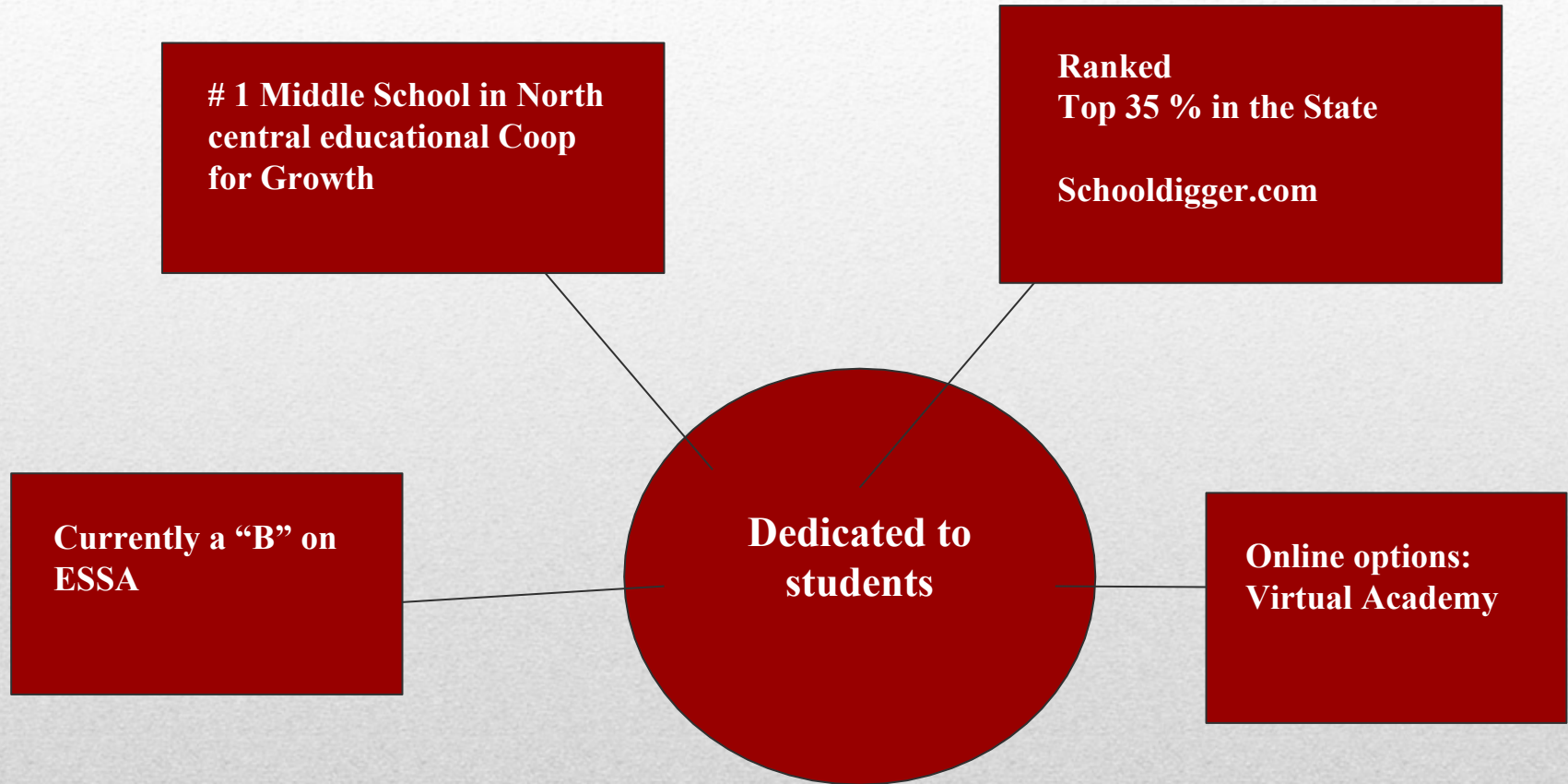


Cave City School District

Our Students

- 77% District wide Free and Reduced Lunch
 - 76 % Free and Reduced Lunch status on Middle School campus
 - 35% of students being raised by someone other than parent and/or have FINS (Family In Needs Service)
 - $\frac{1}{3}$ Virtual Academy Students
 - Serve Grades 6-8
 - 289 Middle School Count
 - Demographics
 - .3 American Indian
 - .7 Black/African American
 - 3.0 Hispanic
 - 96 White
-

Cave City Middle School



Students learning
Multiple Platforms:
PC, Apple, ipads,
Chromebooks,
Microsoft, Google
Docs

1-to-1 Student Device
ratio district wide

Facilities conducive for
teaching 21st Century
Skills

High Density Wireless –
Access points in every
classroom

Current Technology



Marc Walling
High School Principal

Need for Charter

- CCSD understands we can implement these ideas and innovations through act 1240



Need for the Charter status

- Community understands ‘Charter’ and what that means for students
- Have a successful charter model at the High School, clear indicator that the Cave City School District has become the expert on local student success both academically and practically- still room for growth
- Enhance and support the established high school charter
- Sole feeder to the high school charter
- Align the two charter programs, enhance and support the current Cave City High School Career and Collegiate Preparatory, offer course exploration at an earlier age, enter high school with an advantage

Need for the Charter status

- Successful High School Charter Model:
 - Approximately 60% earned a value-added diploma
 - 53% graduated with college credit
 - 10% graduated with Industrial certification
 - 10% Military
 - **STILL ROOM FOR GROWTH**
 - Failing roughly 30% of students
-

Current Resources through Cave City High School Career and Collegiate Preparatory

- Free college/technical courses for “Free” status students
 - Decreased costs for “Reduced” status students
 - \$25.00 cost per course for these students
 - Over half of Juniors and Seniors are enrolled in Concurrent Credit/Technical Certification course
 - School District will subsidize the cost of credits
-



- * CNA
- * Welding
- * EMT
- * Phlebotomy
- * Information System
Tech
- * Animal Science/Husbandry

**Certification programs offered through
CCHS Career & Collegiate Prep**

MISSION

- The mission of Cave City Middle School Career and Collegiate Preparatory is to provide practical and academically diverse opportunities that prepare students for future and life choices through the pursuit of academic and personal excellence in a challenging and supportive environment.
- Cave City Middle School Career and Collegiate Preparatory will strive to create an environment that fosters a joy of learning in preparation for future success through individualized student success plans. In addition, Cave City Middle School Career and Collegiate Preparatory will directly align with the goals established by the current Cave City High Career and Collegiate Preparatory School.

Cave City Middle School Career and Collegiate Preparatory

Academic Success

```
graph TD; AS[Academic Success] --- HSC[High School Credit pathway]; AS --- AP[Accelerated pathway]; AS --- I[Interventions];
```

High School Credit pathway:

- Surveys of Agriculture
- Adv. Integrated Physical Science
- Algebra I
- Civics
- Health

Accelerated pathway:

- Courses based on ability level and not grade level
- Examples

- Interventions
 - Face-to-Face Tutoring
 - Virtual Tutoring
-

Preparation for future choices

```
graph TD; A[Preparation for future choices] --> B[Community Partners:]; A --> C[CPR, Stop the Bleed, Heimlich, First Aid, Google]; A --> D[Agriculture Pathway]; A --> E[Pre-Medical Pathway];
```

Community Partners:

- WRMC, UAMS, Local Experts in Agriculture, Cave City Nursing Home, Harris Feed Store, Bank of Cave City, First Community Bank

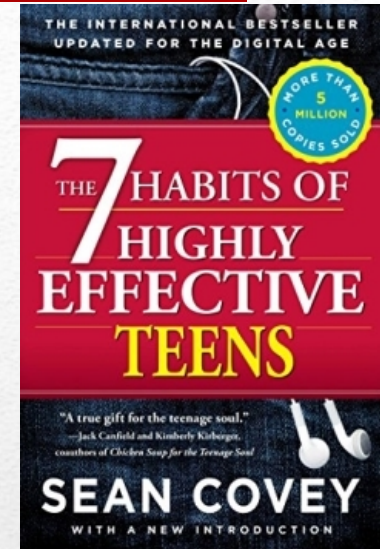
- CPR, Stop the Bleed, Heimlich, First Aid, Google

- Agriculture Pathway
 - Pre-Medical Pathway
-



Darcie: Scrub Club
8th Grade

Personal Success



- Student Success Plan in 6th grade- drives Middle School experience
- Enhanced Physical Education: Health goals

- Staff training on Trauma-Informed Education

Social Emotional Learning:

- 7 Habits of Highly Effective Teens
- I'm Possible initiative, BeYou-tiful Girls initiative
- Everything Google

Goals

1. Increase the number of students who complete a foundational/entry level course in Agriculture, Family and Consumer Science (FACS), and certifications offered through the High School charter
 2. Increase 7th & 8th grade students completing high school credit courses
 3. 80% of all students will meet their personal growth goals in Reading and Math set forth in SSPs
 4. 80% of all students will meet their personal growth goals in Science set forth in SSPs
 5. Increase % of 6th & 7th grade grade students scoring *Ready* and *Exceeding* on the ACT Aspire Math, Science, Literacy by 5% each year
-

Innovations tied to Charter goals:

Technical Course offerings:

Agriculture: Horticulture, Construction, Small Engine, Farm Business

Pre-Med: Scrub Club, Health Lab, Med Terminology, Certifications

Growth in Math, Science, Literacy

Increase in # of students entering high school with credit

Increase # of students completing a certification

Increase # of students completing foundational courses leading to high school charter program

Advanced course pathway:

Courses for high school credit, Accelerated pathways

- **Advanced Science**
- **Civics**
- **Health**
- **Accelerated Math**
- **Algebra I**
- **Adv English**

Extended School Day

- Library and Computer Lab open until 4:00
 - Face-to-Face Tutoring: 3:15-4:15 Monday-Thursday
 - Virtual Tutoring: 4:15-5:15 Monday-Thursday
-

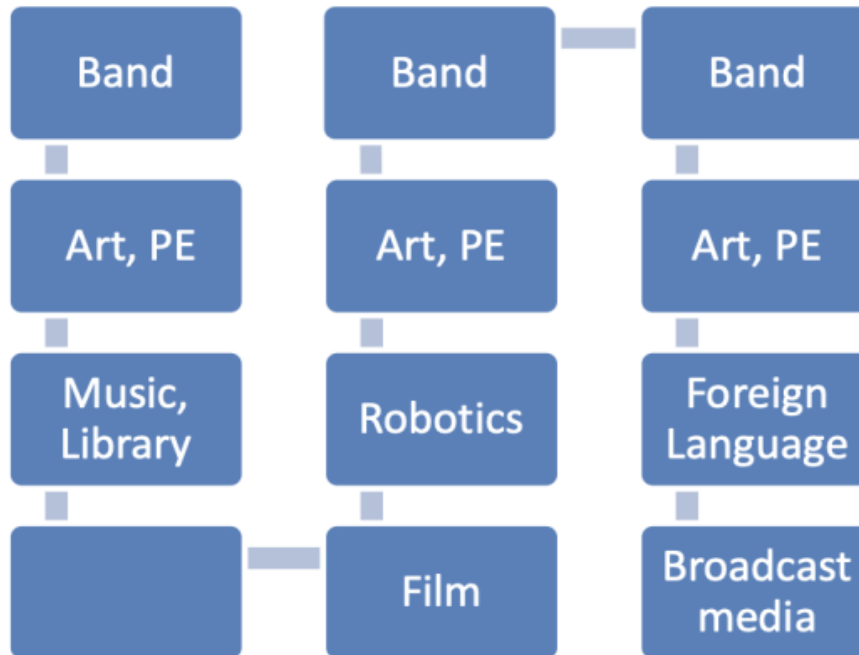
Current Electives

6th Grade

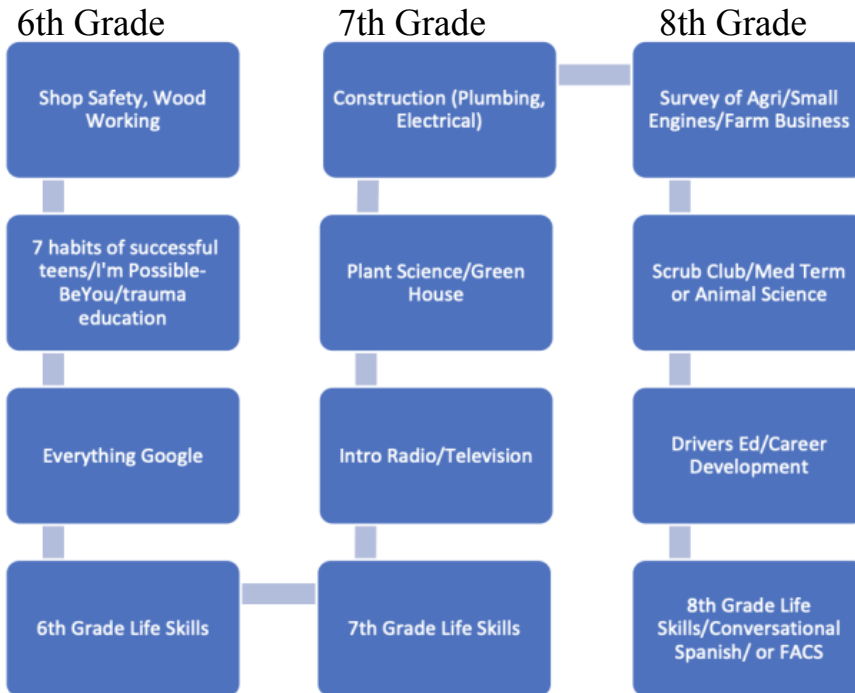
7th Grade

8th Grade

****Current electives are still available to all middle school students.**



Proposed electives



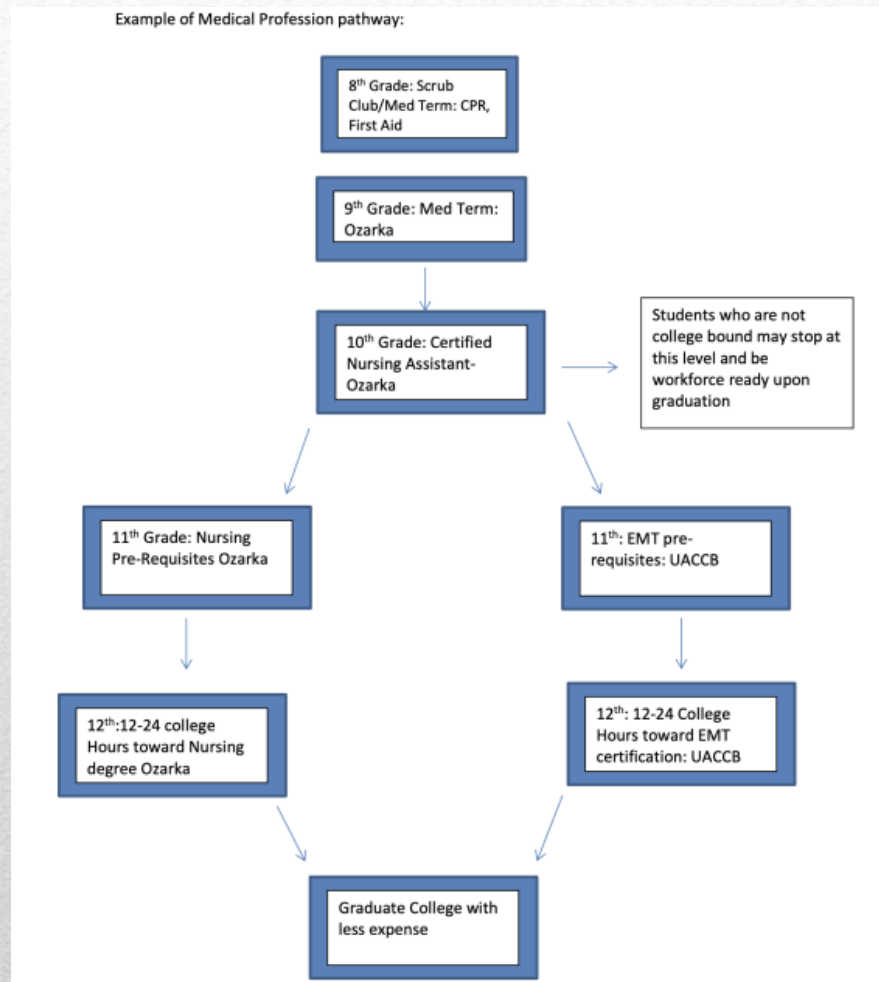
*Certifications available in Scrub Club, Drivers Ed, Everything Google

** Survey of Agriculture and Animal Science are foundational course required high school

*** Shop safety is a pre-requisite for any further agriculture courses in middle school; therefore, that course will be offered at each grade level.

Example of Medical Pathway: Nursing

Example of Medical Profession pathway:



Example of AGri Pathway: Associates Degree in Animal Science

Example Agri pathway:



Typical progression of courses: Welding Certification

Grade 8	Grade 9	Grade 10	Grade 11	Grade 12
English 8	English 9	English 10	English 11	English 12/O.C.
Math 8	Algebra I	Geometry	Algebra II	Senior Math
Science 8	Physical Sci	Biology	Chemistry	Travel Time
History 8	Civics/Econ	American His	Travel Time	Technical Math/Engineering Drawings
Agri Survey: Foundational Course (Travel Time to high school campus)	Ag Mechanics	Ag Metals	Tech Methods	Welding I
			Engineering Drawings	Writing for the Workplace
Wheel: Life skills, Student Support, Greenhouse Plant science	Keystone/Health	Fine Arts/P.E.	Industrial Safety	World History
			Thermal Cutting	
Career Development (semester course)	Student Elective - Athletics, Agri, etc	Student Elective - Athletics, Agri, etc	Student Elective - Athletics, Agri, etc	Student Elective - Athletics, Agri, etc
Small Engine Repair (semester course)				

Community Partnerships

- Cave City Nursing Home
- University of Arkansas Community College at Batesville (UACCB)
- Ozarka College
- Bank of Cave City
- First Community Bank of Sharp County
- White River Medical Center (WRMC)
- University of Arkansas Medical Sciences (UAMS)
- Watermelon Growers Association of Cave City
- Small business owners of Cave City

Subject Category	6th Grade ED Students	7th Grade ED Students	8th Grade ED Students
Literacy (In need, Close) Passed (Ready, Exceeding) State Avg for all students	62.02 37.98 36.16	51.06 48.94 36.26	52.85 47.15 38.78
Math (In need, Close) Passed (Ready, Exceeding) State Avg for all students	66.67 33.79 43.79	43.55 56.45 36.66	35.72 64.28 36.14
Science (In need, Close) Passed (Ready, Exceeding) State Avg for all students	52.91* (RV) 47.09 35.56	53.19 46.81 32.51	54.29 45.71 31.81

ACT Aspire Data: Economically Disadvantaged Students

Waiver Requests

1. Teacher Licensure

-For newly added Electives, no core courses

2. Planned Instructional Day

- flexibility needed in order to provide transportation

3. Class size and Teaching load

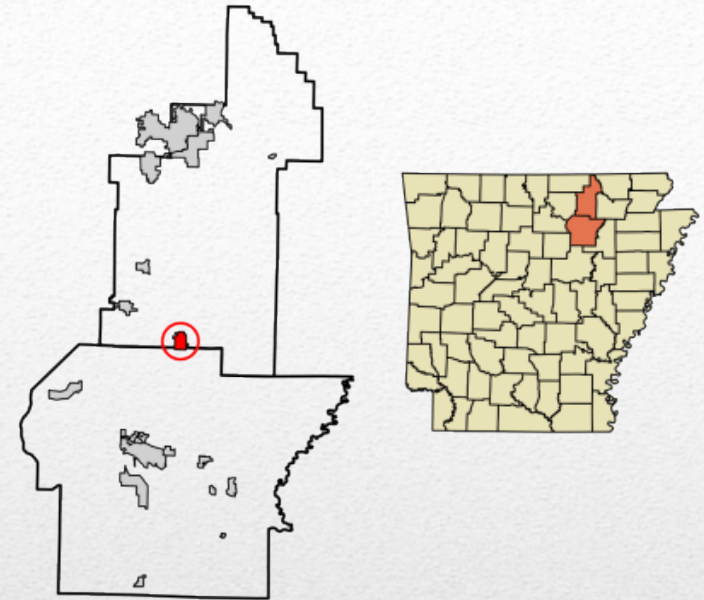
4. Licensed Library Media Specialist

5. Required Minutes in Non-Core Courses



Brittanie Walling
Senior 2020

John Beller, President & CEO Bank of Cave City



Jonas Anderson, Cave City Mayor
