



# BOARD OF EDUCATION UPDATE

NEW ELEMENTARY SCHOOL (PK-5)

10.17.2023



## AGENDA

1. *Project Recap*
2. *Site Development*
3. *Building Development*
4. *Construction Document Quality Control & Next Steps*

## Design Phase Detail Schedule

2022

2023

### Schematic Design Phase

Site & Building Options

Refine Design

Finalize SD Package

Estimate Rec.

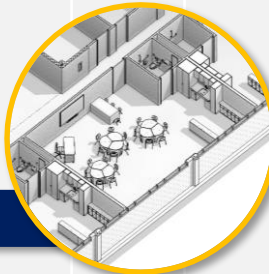


### Design Development

Advance program space definition and details

Finalize SD Package

Estimate Rec.



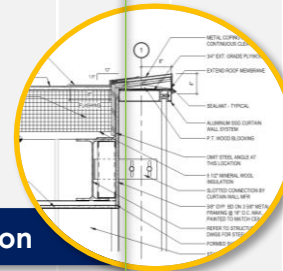
### Construction Documentation

Finalize documentation (plans & specifications)

Estimate Rec.

Prepare Submission

Land Use Approvals



**Finalize Package and prepare for Bid Administration**

### Working Group Meetings

#### WORKING GROUP MEETINGS

- 8/31 Meeting with Liaisons 3:30-4:30pm  
Wed. Location: Virtual
- 9/14 Visioning Session 1-3pm  
Wed. Location: Virtual
- 9/28 Initial Concepts 1-3pm  
Wed. Location: Virtual
- 10/12 Evidence-Based Design 1-3pm  
Wed. Location: Virtual
- 10/26 Refinement of Preferred Concept 1-3pm  
Wed. Location: Virtual
- 11/9 Building Systems & Site 1-3pm  
Wed. Location: Virtual
- 11/23 Interior Design 1-3pm  
Wed. Location: Virtual
- 1/18 Room-by-Room Assessment 1-3pm  
Wed. Location: Virtual
- 2/1 Finalizing the Design 1-3pm  
Wed. Location: Virtual

### Community Engagement

- 9/28 Workshop #1 Visioning Session 6-8pm  
Wed. Location: Foster Middle School Auditorium  
A big picture sharing event to hear the community's goals and aspirations for the project, and learn what's most important to them.
- Oct. Community Survey #1  
Location: Online  
A short online survey based on Workshop #1 to gather the community's goals and aspirations for the project and what's most important.
- 10/21 PTO Meeting 9:30-11am  
Fri. Location: Central Office Board Room
- 11/9 Workshop #2 Concept Workshop 6-8pm  
Wed. Location: Virtual  
An event designed to hear and gather the community's preferences as multiple conceptual options are being explored.
- Nov. Community Survey #2  
Location: Online  
A short online survey based on Workshop #2 to gather the community's preferences as multiple conceptual options are being explored.
- 1/18 Workshop #3 Refining the Design 6-8pm  
Wed. Location: Foster Middle School Auditorium  
The designation of a preferred community direction as the concepts are narrowed down and to one collective vision.



## Responsible

*Respectful of the variety of needs, balances your vision with established requirements, project budget, longevity*

## Functional

*Adaptable, flexible, ability to serve multiple uses, scalable, ease of maintenance*

## Design

*Forward-thinking, diverse, inclusive, daylit, connection to outdoors, sustainable (PV/geothermal), resilient, collaborative, supports project based & small group learning, reflective of community, safe, secure and welcoming*

## Community Use

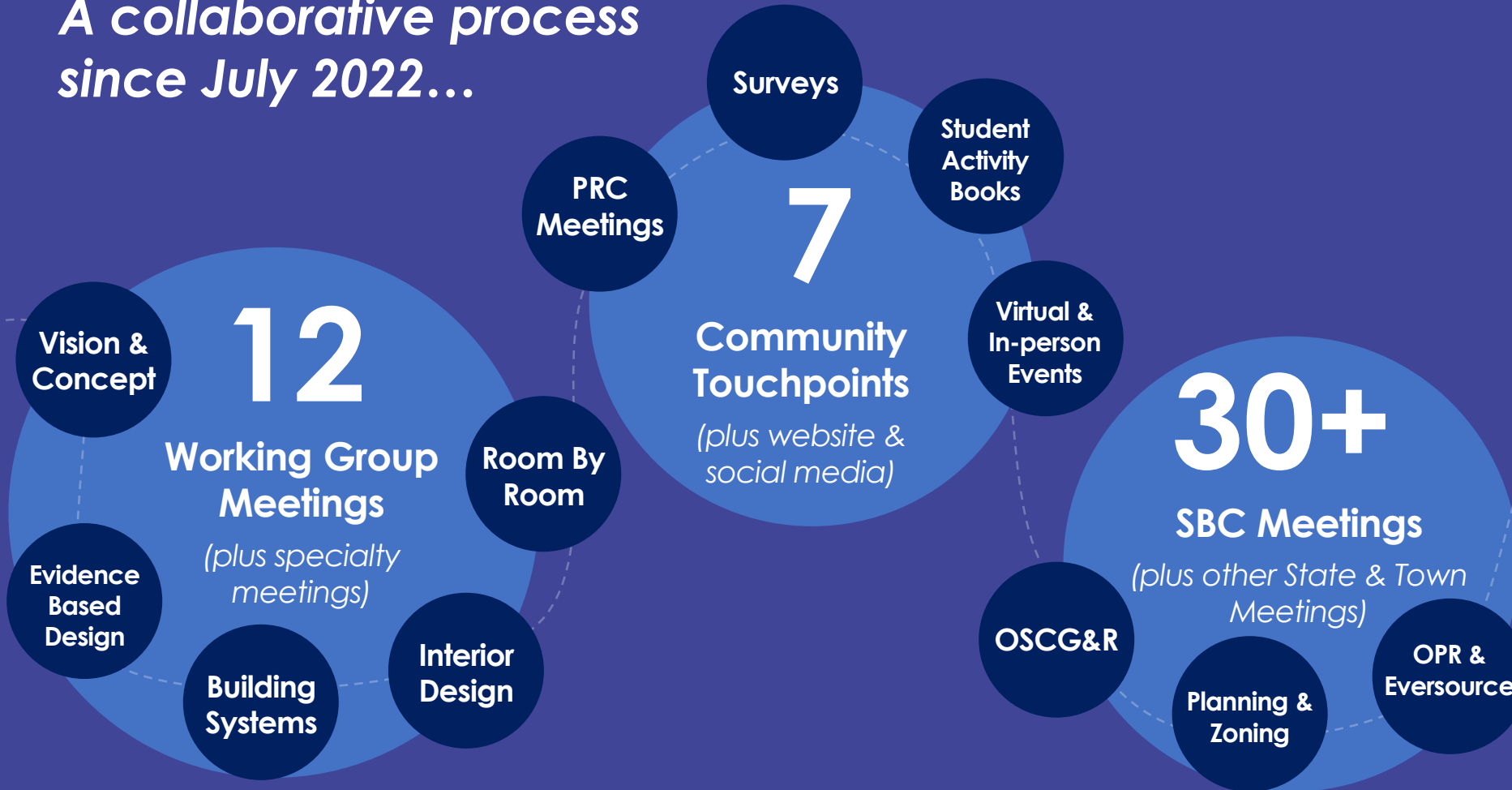
*Accessible, separable space, durable*

## Site Design

**Functional educationally:** outdoor education / presentation / learning, safety & security

**Functional technically:** traffic flow, on site sanitary, overflow parking, FEMA & wetlands

*A collaborative process  
since July 2022...*



**12**

**Working Group Meetings**

*(plus specialty meetings)*

**Vision & Concept**

**Evidence Based Design**

**Building Systems**

**Interior Design**

**Room By Room**

**PRC Meetings**

**7**

**Community Touchpoints**

*(plus website & social media)*

**Surveys**

**Student Activity Books**

**Virtual & In-person Events**

**30+**

**SBC Meetings**

*(plus other State & Town Meetings)*

**OSCG&R**

**Planning & Zoning**

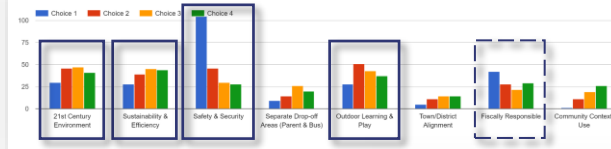
**OPR & Eversource**

# What We Heard...TELLING THE STORY OF MADISON

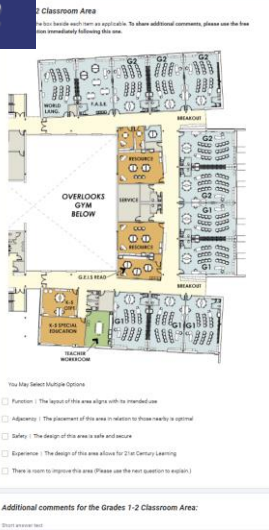
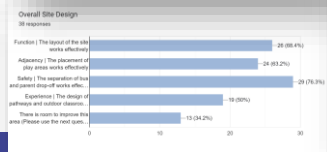
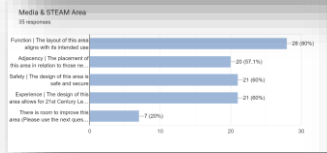
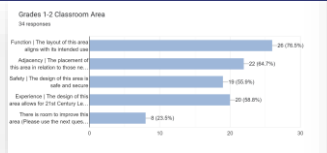
## Workshop #1 – Visioning



## Community Survey #1



## Community Survey #2



## Workshop #2 – Concept

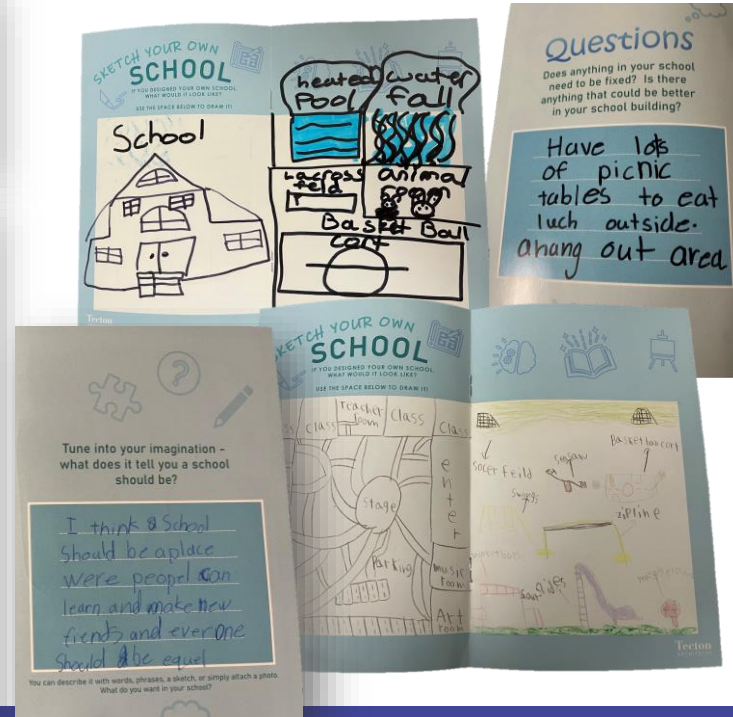


## Workshop #3 – Refining



## Student Activity Workbooks

(Jeffrey, Ryerson & Brown)



...PLUS FEEDBACK FROM OUR WORKING GROUP MEETINGS!

## What would you like to see in a New PK-5 Elementary School?

**Safety | Sustainability | 21<sup>st</sup> Century Learning | Adaptable for Future | Outdoor Learning & Play | Daylight | Fiscally Responsible | Inclusive & Welcoming | Support for ALL students | Equity Districtwide | Reflective of Town Character**

*"A timeless building design that will be **adaptable** as needs develop and change."*

*"Try to **preserve some of the beautiful natural habitat** that was a farm field."*

*"Keep it aligned to the to-be renovated School out of **equality to the taxpayers** in the other part of town."*

*"**Courtyards with places to garden**, be outside more."*

*"**Safe and on budget and built on time.**"*

*"Built using inclusive design principles to be **accessible for all students.**"*

*"Separation of upper and lower grade levels almost like a **school with a new school.**"*

*"Emphasis on **sustainability**"*

*"**Light, bright, modern, and welcoming environment.**"*

...PLUS FEEDBACK FROM OUR WORKING GROUP MEETINGS!

# How We Plan to Implement...TELLING THE STORY OF MADISON



**DUNES**



**GREEN WAY**



**SHORE**



**WATER**







**Tecton**  
ARCHITECTS

# **SITE DEVELOPMENT**





- A** Parent Pick-Up & Drop-Off
- B** Bus Pick-Up & Drop-Off
- C** Visitor Parking
- D** Staff Parking
- E** Age Appropriate Playscapes
- F** Playfield
- G** Pollinator Pathway
- H** Outdoor Learning
- I** Loading & Utilities
- J** School Garden

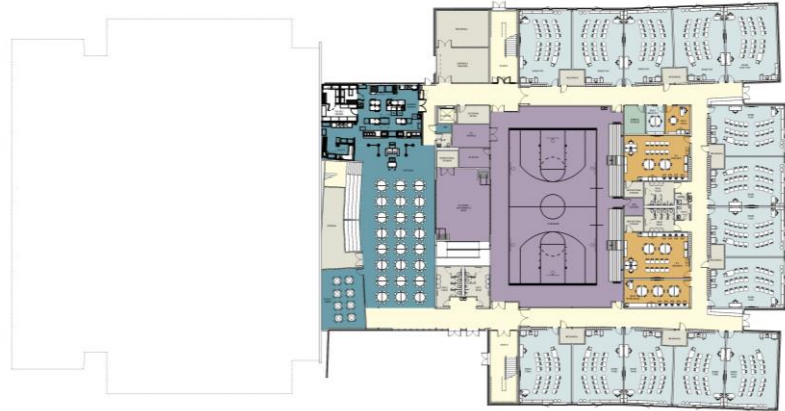


**Tecton**  
ARCHITECTS

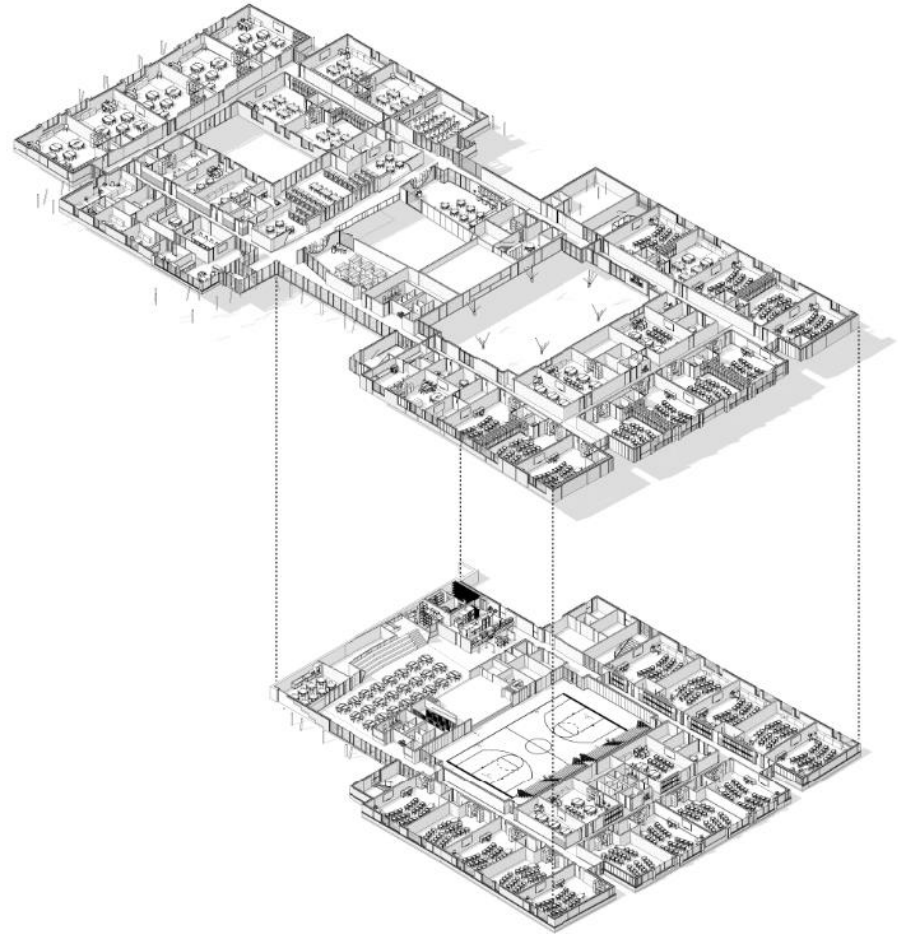
# **BUILDING DEVELOPMENT**



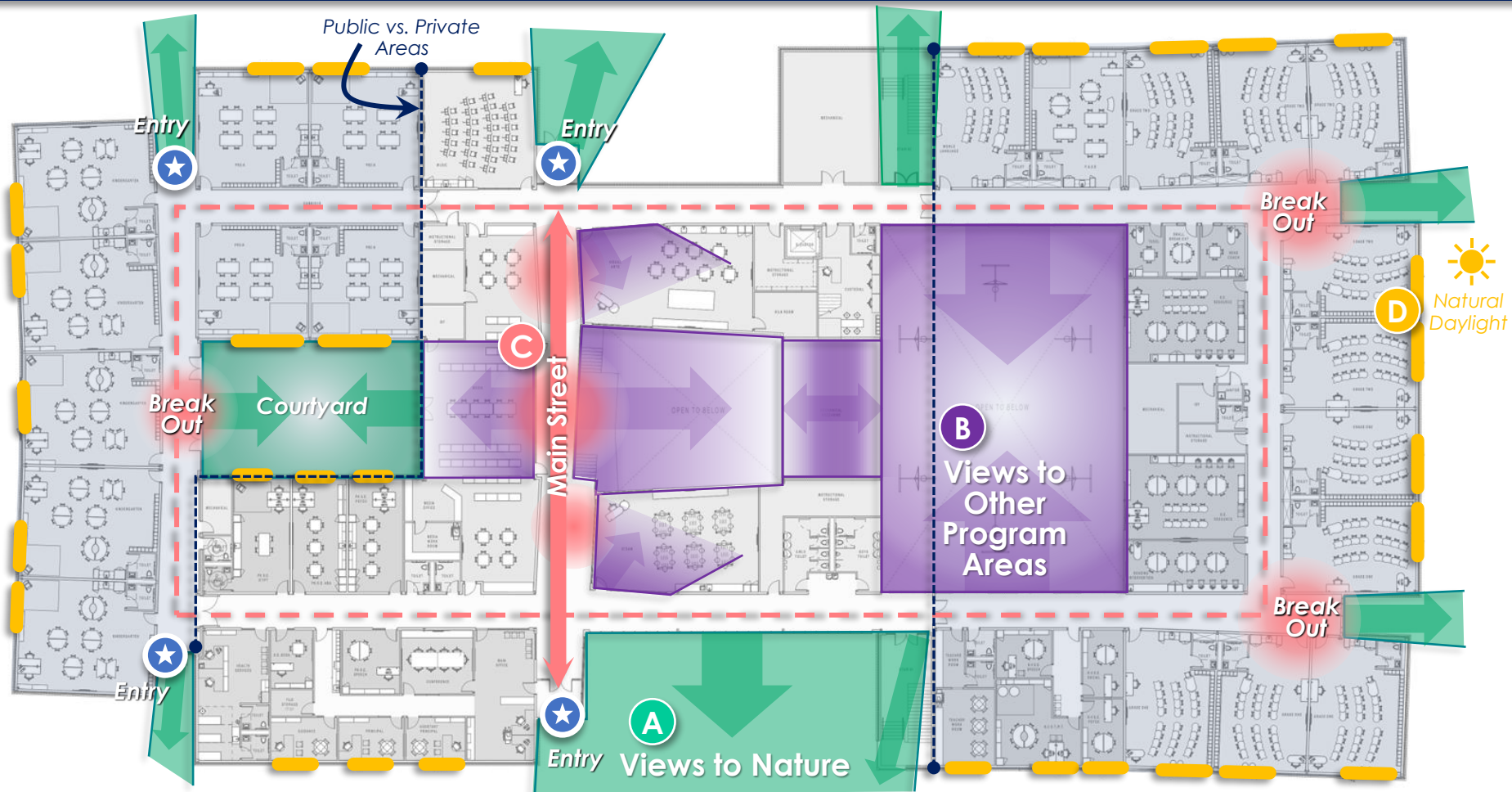
Main Level

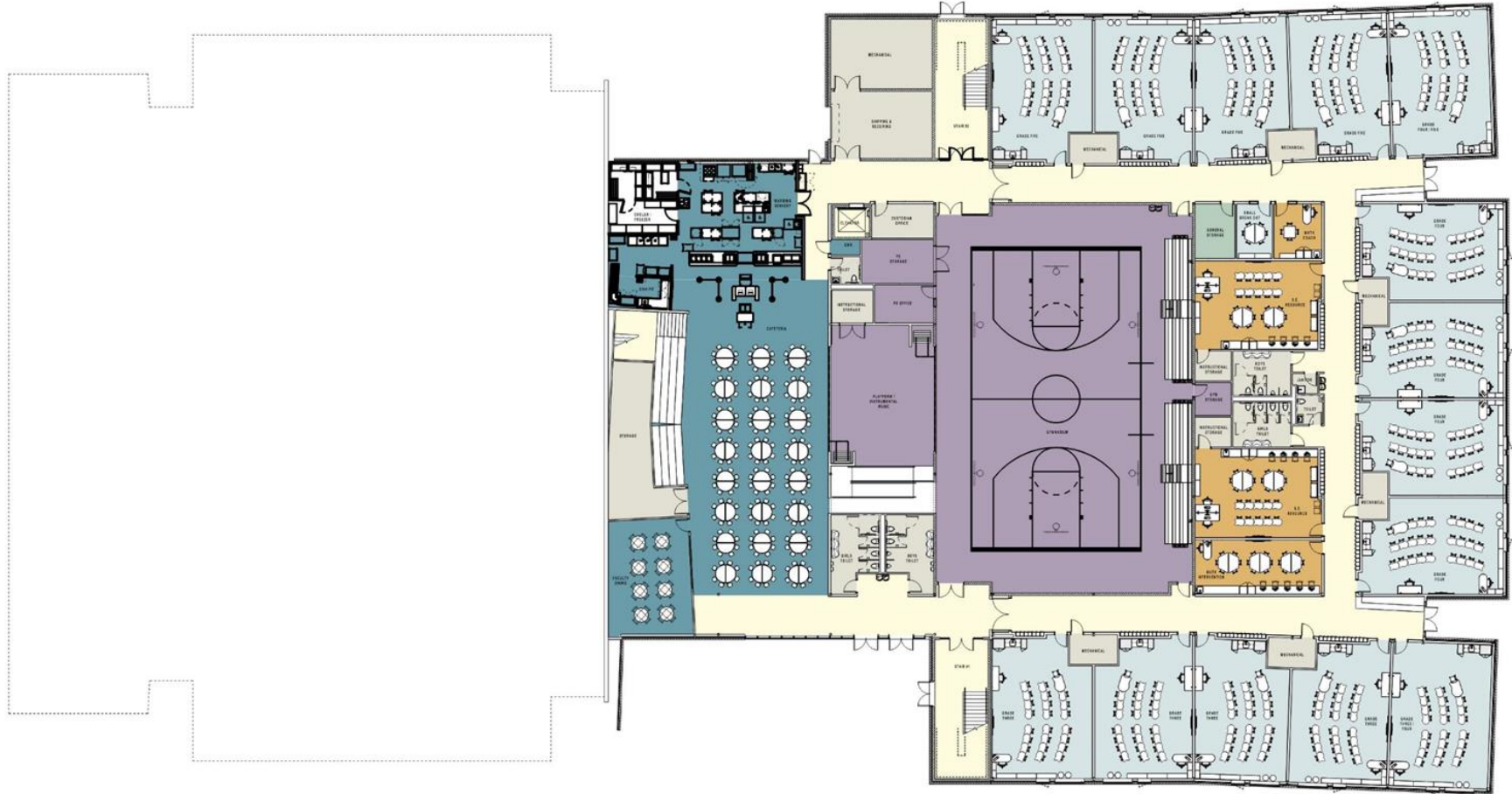


Lower Level













# Section Perspective | Core Spaces



# Section Perspective | Core Spaces



Media Center

"Main Street"

Storage

Cafeteria

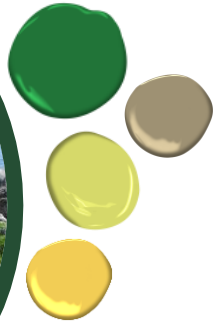
Platform

Gymnasium

PRE-K & K  
DUNES



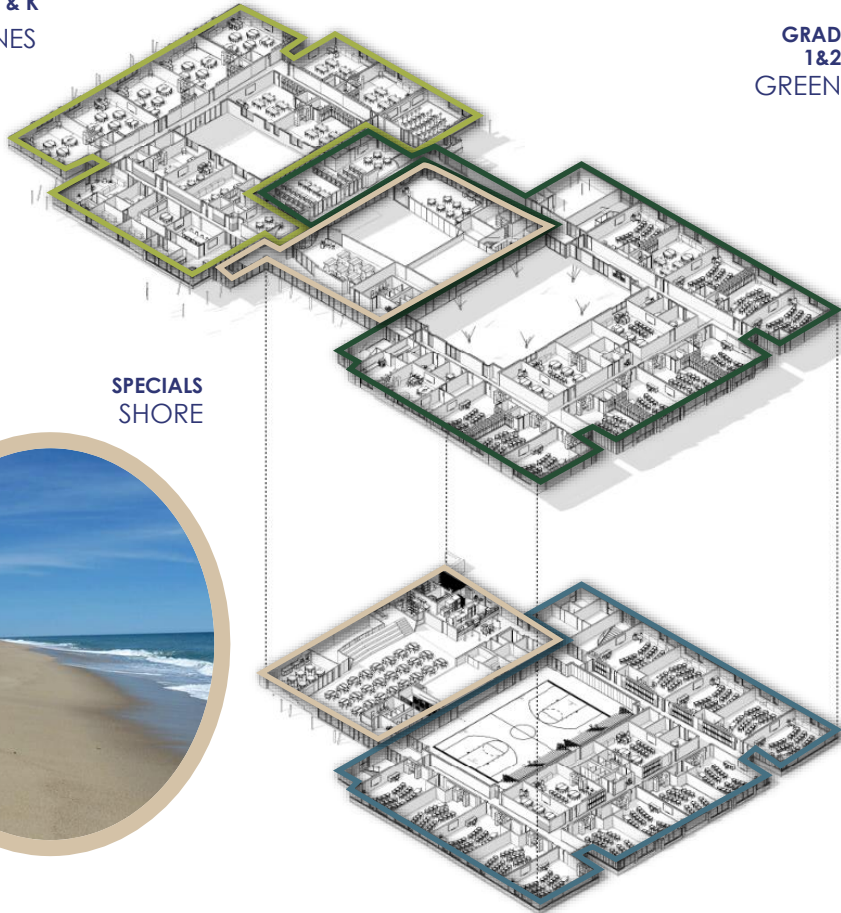
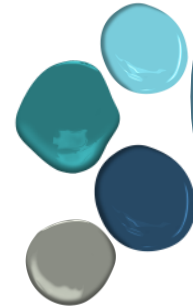
GRADES  
1&2  
GREENWAY



SPECIALS  
SHORE



GRADES  
3, 4 & 5  
WATER

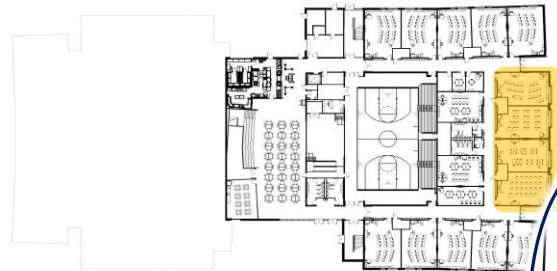




Areas for tackable display



PRE-K



Area for vertical learning, student collaboration, writeable walls...

Area for identity-inspired graphic wall protection



4TH GRADE

Colors of nature inspired by Madison identity



# Main Entry Hall



Could consider playful flooring pattern to suggest a boardwalk



PAINT / WALL PROTECTION



WOOD TRIM



VCT TILE FLOORING

Café & Gym Beyond



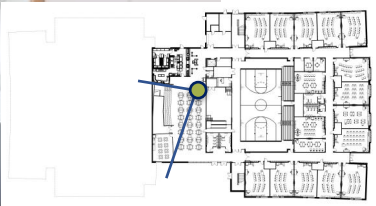
COLOR ACCENTS



VCT TILE FLOORING



**Café & Social Stair**



**COLOR ACCENTS**



**ACOUSTIC PANELS**



**WOOD TRIM**



**PERFORATED PANELS**



Media Center



COLOR ACCENTS



ACOUSTIC PANELS



WOOD FF&E



CARPET TILE FLOORING

# Media Center



LARGE  
ACCENT LIGHT  
FIXTURES



ACOUSTIC  
PANELS

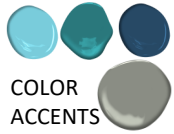
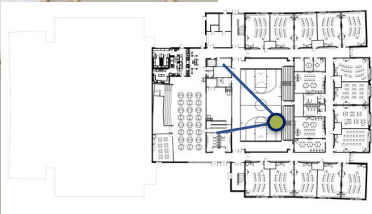


COLOR  
ACCENTS



WOOD FF&E

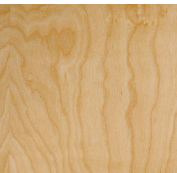
# Gym



COLOR ACCENTS



ACOUSTIC PANELS



WOOD BLEACHERS



POURED GYM FLOORING



## Construction Document Quality Control:

1. **(2) Cost Estimates w/Reconciliation**
2. **Independent Structural Review**
3. **Third-Party Code Review**
4. **CMR (Gilbane) Constructability & Coordination Review**
5. **OPM (Colliers) Constructability & Coordination Review**
6. **Commissioning Agent (Salas O'Brien) Building Envelope and Systems Review**



## Next Steps:

1. **Building Official & Fire Marshal Sign-Off**
2. **Health Department Sign-Off**
3. **Building Committee – Formal Approval of Construction Documents & Cost Estimate**
4. **Board of Education – Formal Approval of Construction Documents & Cost Estimate**
5. **Office of Grants Administration (OGA) Pre-Bid Conformance Review (PCR), November 15, 2023**



**Tecton**  
ARCHITECTS

**THANK YOU!**