



**Neah-Kah-Nie
School District**

Boundary Proposal
5/11/26

Why?



- **NKN is experiencing increased enrollment at both GGS and NES.**
- **Newly constructed and planned apartments could drastically increase NES enrollment.**
- **NES is at classroom capacity.**
 - **All useable classrooms are occupied by classroom teachers or special education classes.**
 - **Family resource room is currently in a gym locker room.**
 - **A portable classroom is planned to be placed at NES in summer 2026 to accommodate 60 unit affordable housing development opening in October 2026**
- **GGS has 1-2 classroom spaces available, if need arises.**



Unknowns

- **How many students will reside in the new developments?**
 - Housing commissioner and property manager estimate between 16 - 30 students based on models
- **Will all apartments be leased by October 2026?**
- **How many students will be elementary aged?**
 - Will we have 30 more kinders in October or 30 new Sophomores?
- **How many occupants will be families already living in the district currently zoned for NES or GGS?**

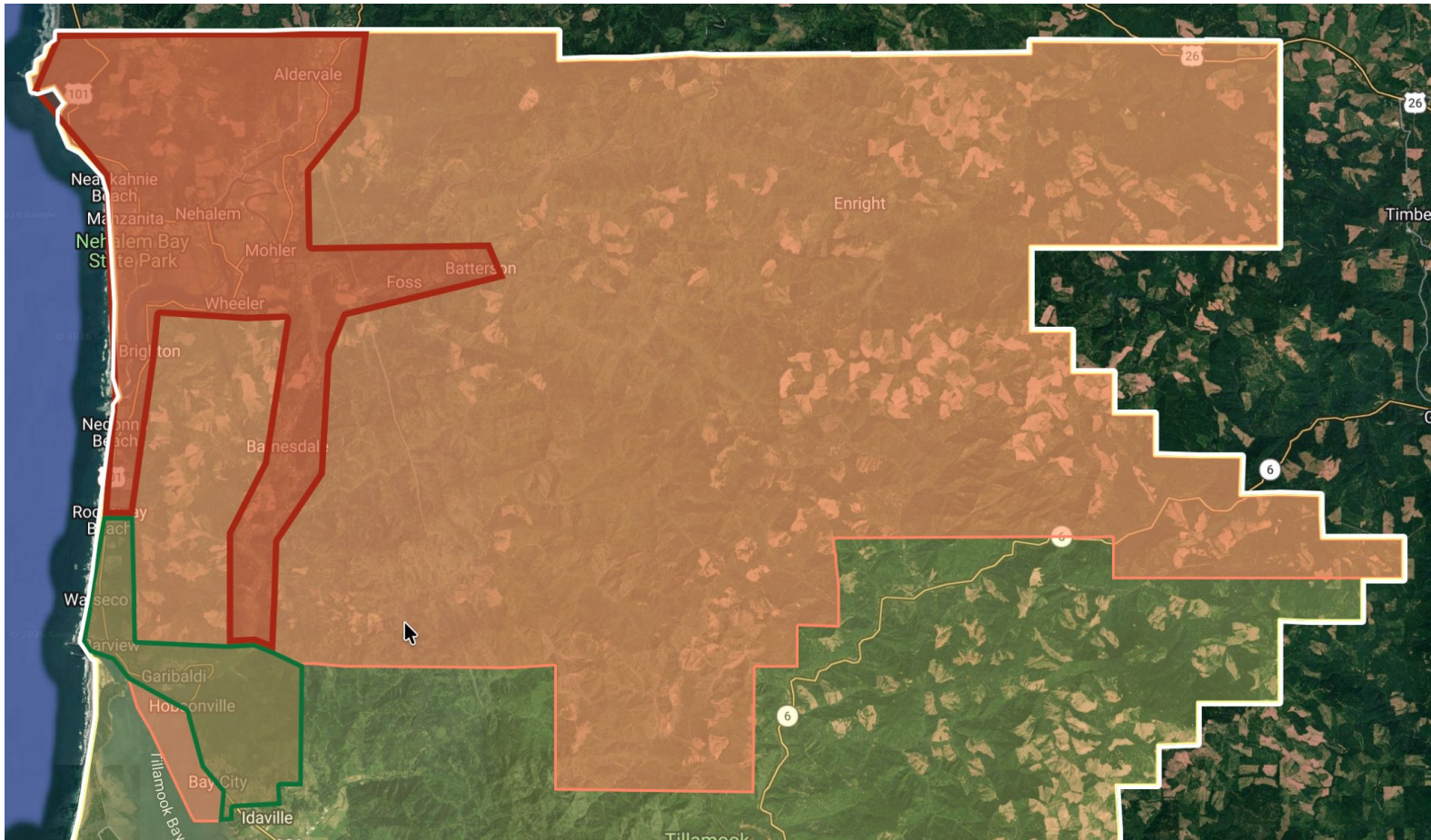


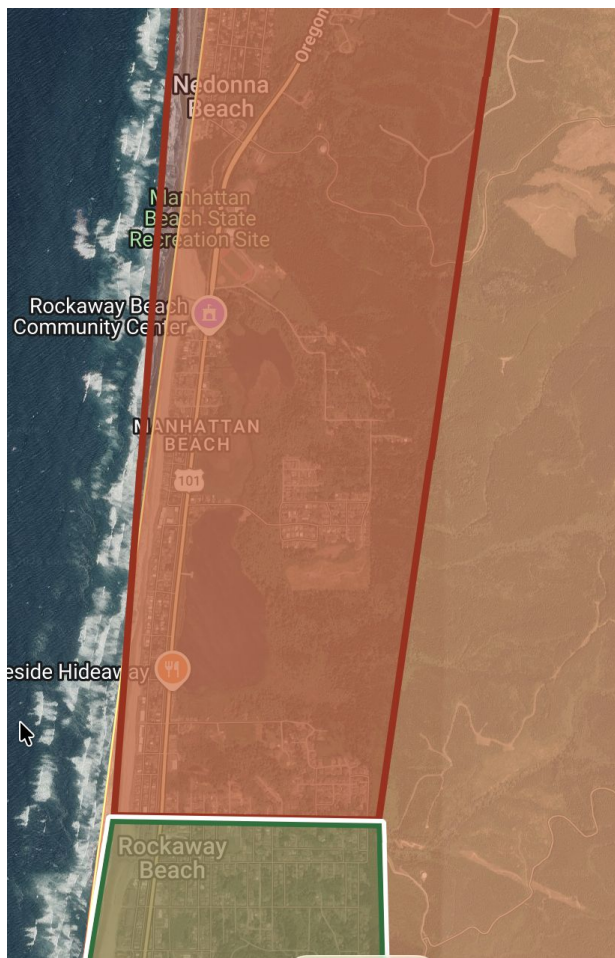


Knowns

- **We will prepare for an influx of students at NES and GGS by providing more FTE at both elementary schools.**
- **We will make modifications to accommodate capacity at each building, as needed.**
- **The boundary adjustment plan, as presented, will not have drastic impact on enrollment and take 5-10 years to complete**





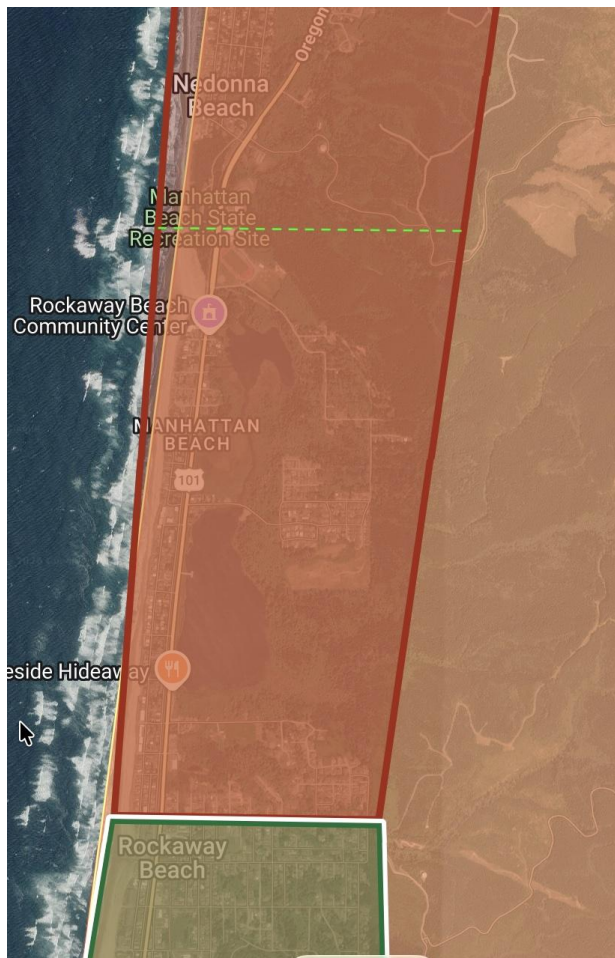


Current West Boundary

- NES boundary is North of N 3rd in Rockaway
- GGS boundary is South of N 3rd in Rockaway

Current East Boundary

- NES boundary contains Miami Foley



Proposed West Boundary

- NES boundary moved to North of NKN HS entrance
- GGS boundary moved to South of HS entrance

Proposed East Boundary

- No changes



Notification

- **In March 2026, NKN Superintendent notified all affected families of a possible boundary move.**
- **Families were given a choice for their student to remain at current school or enroll at newly zoned school.**
- **1 affected student requested to enroll on newly zoned school.**





If Approved



- **Newly enrolled students within the zone will be zoned for GGS**
 - Unless the newly enrolled student is a sibling of a currently enrolled NES student.
- **Bussing for NES and GGS will be provided for families in the newly affected zone.**
- **We have been monitoring newly enrolled Pre-K and Kinder students and have been advising families the boundary may change**
 - There are currently no new enrollments who are expected to change schools due to the proposed boundary change
- **Miami Foley will continue to be zoned for NES**



Questions and Recommended Motion



- **Questions?**
- **Recommended Motion**
 - **To Approve moving the elementary school boundary in Rockaway Beach from North 3rd Avenue to North East Lake Boulevard (NKN High/Middle School entrance) while retaining current Miami Foley boundaries as presented.**