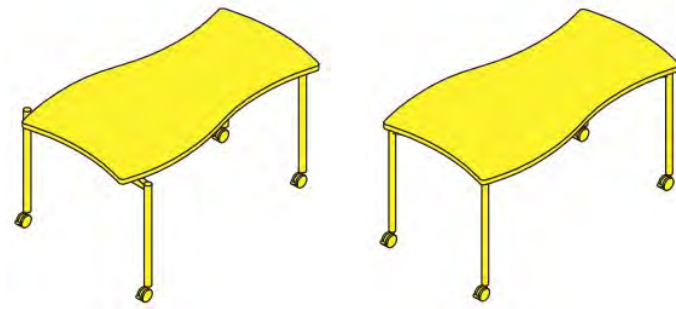




PRE-K & KINDERGARTEN FURNITURE LOOKBOOK

February 7th, 2023

STUDENT DESKS



VS: Shift+ Fusion

- + Pin height adjustable (23.25"-32.5")
- + Stackable
- Limited edgeband color options



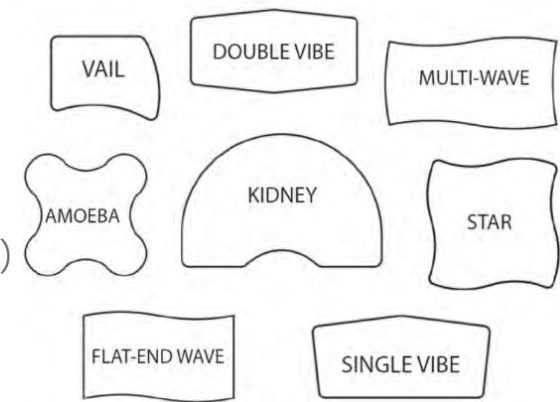
Steelcase: Verb

- + Pin height adjustable (24"-33")
- + More edgeband colors
- May be too tall for Pre-K
- Only available in rectangle and chevron shapes

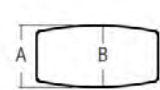


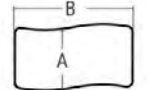
MiEN: F2F

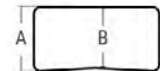
- + Pin height adjustable (20"-25")
- + Variety of shapes/sizes
-

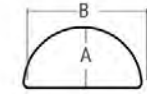



STUDENT DESKS

	W	A	B
	48"	24.5"	28"
	54"	24.4"	29"
	60"	24.4"	30"
	72"	24.5"	30"

	W	A
	60"	30"

	W	A	B
	48-72"	20"	18.6"
	48-72"	24"	22.2"
	54"	27"	25.6"

	W	B
	24"	48"
	30"	60"
	20"	40"

	W	A	B
	60"	30"	26.375"



Fleetwood: FNRS

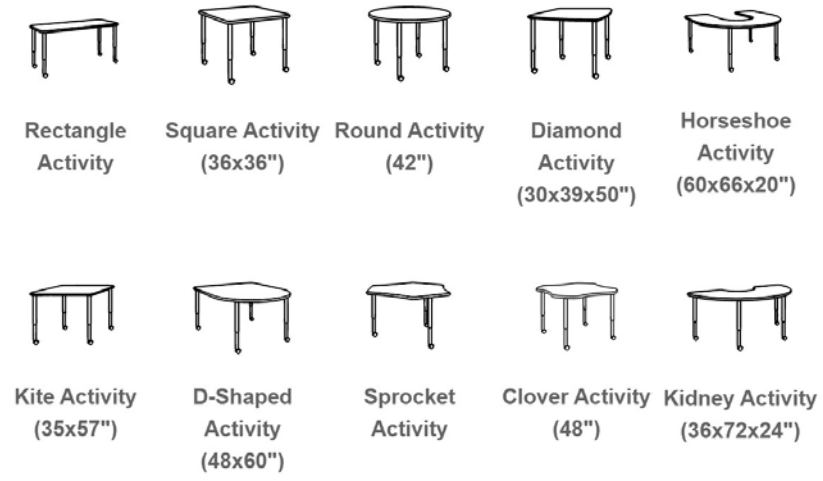
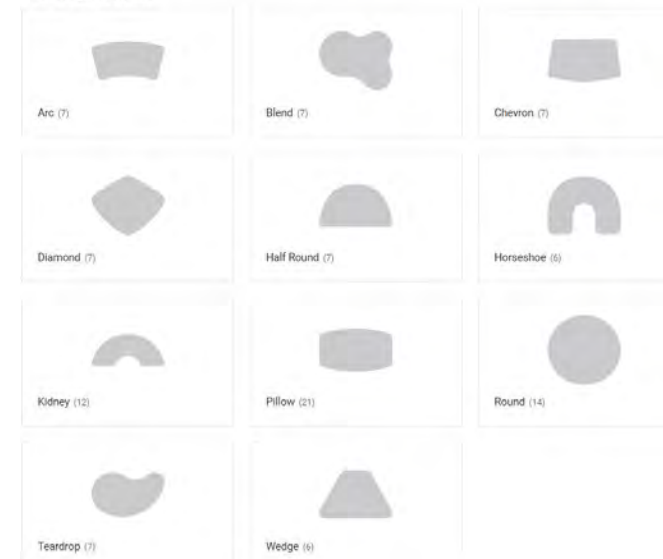
- + Pin height adjustable (21" -28")
- + Various shapes/sizes
- + Flip/nest available
- + A lot of edgeband colors



Fleetwood: BRBL/BRPW

- + Pin height adjustable (20" -28")
- + Blend/pillow shapes
- + A lot of edgeband colors

Post Leg products



KI: Ruckus Activity Table

- + Pin height adjustable (20" -33")
- + Many shapes
- + A lot of edgeband colors
- + With or without casters

STUDENT CHAIRS



Smith System: Flavors Stack

- + Utilize four different seating positions
- + Flexible plastic shell to adapt to movement
- + Stackable
- + Four Leg

-



VS: PantoSwing LuPo

- + Double-walled textured polypropylene with air-cushion effect
 - + Grip hole
 - + Cantilever leg
- Non-stacking



KI: Wave Intellect

- + One-piece contoured shell is made of static-free high-impact polypropylene
 - + Grip hole
 - + Cantilever leg OR Four Leg
- Non-stacking in Cantilever



STUDENT CHAIRS



VS: Jumper Air

- + Double-walled textured polypropylene with air-cushion effect
- + Stackable
- + Grip hole
- + Four Leg

-



Whitney Brothers: Whitney Plus

- + Birch plywood construction
- + Grip hole
- + Available in all natural tone
- + Four leg

- Non-stacking

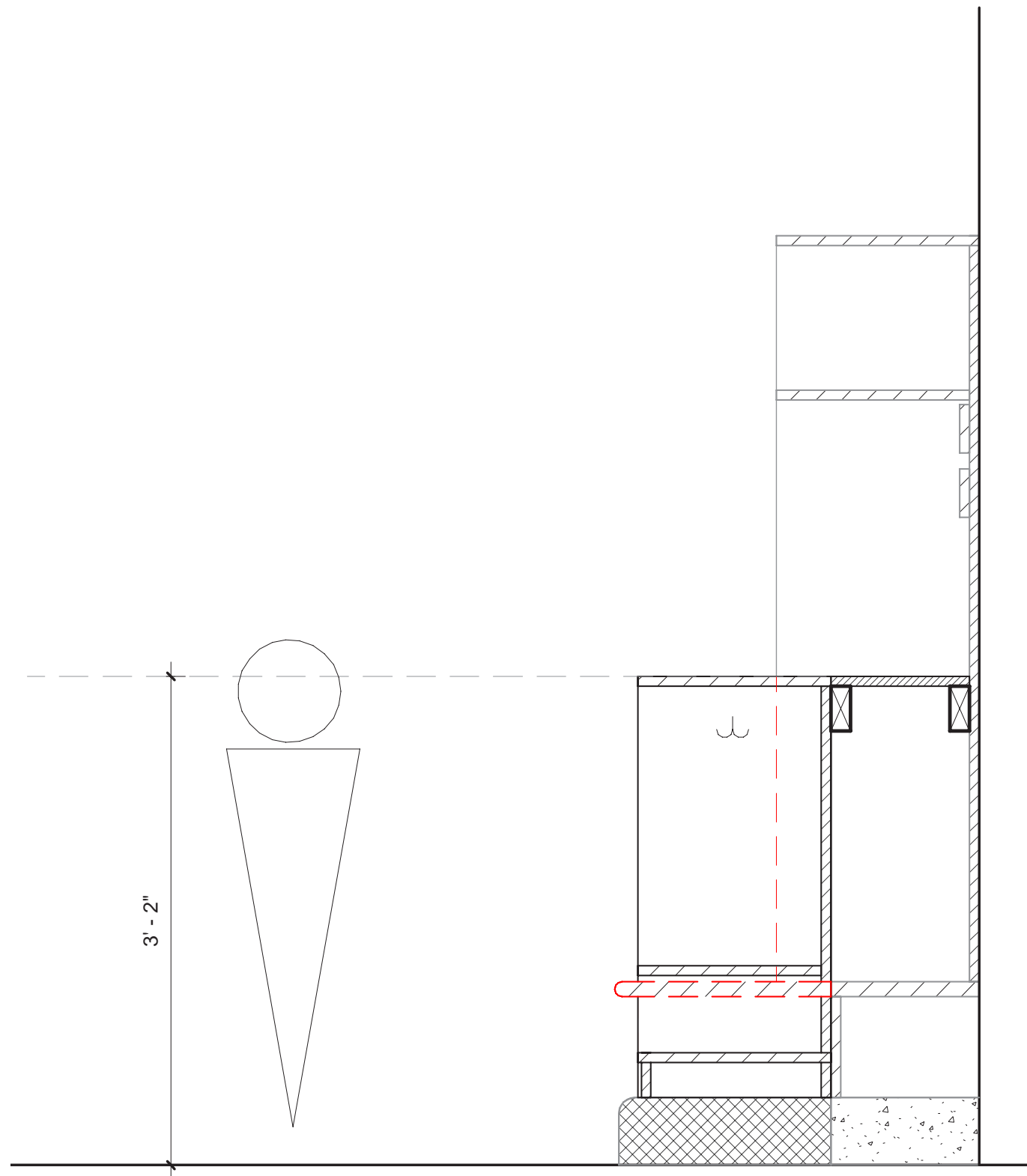
TEACHER PODIUM



MediaTechnologies: Stowaway (existing)



PRE-K CUBBIE MODIFICATIONS - OPTION A



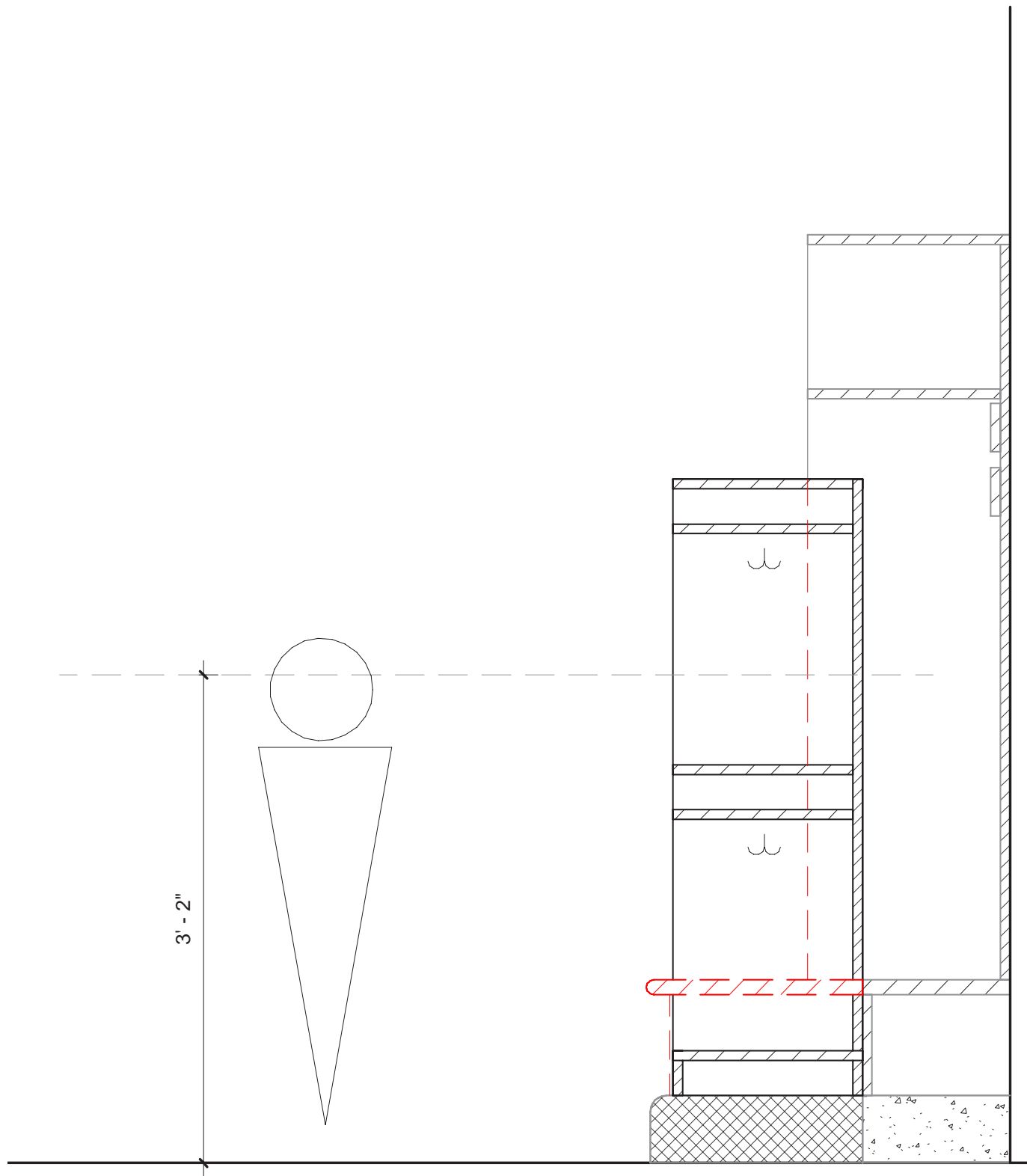
Remove portion of existing in order to install:

Kaplan - Carolina 4-Section Toddler Locker

Dimensions: 32" H x 48" W x 15" D

- Single tier, 12" wide cubbies
- Max reach to hook would be about 34"
- Would require we find additional space in room to get to 20 cubbie slots. For example, the west room can only fit 12 in the spot they are in now

PRE-K CUBBIE MODIFICATIONS - OPTION B



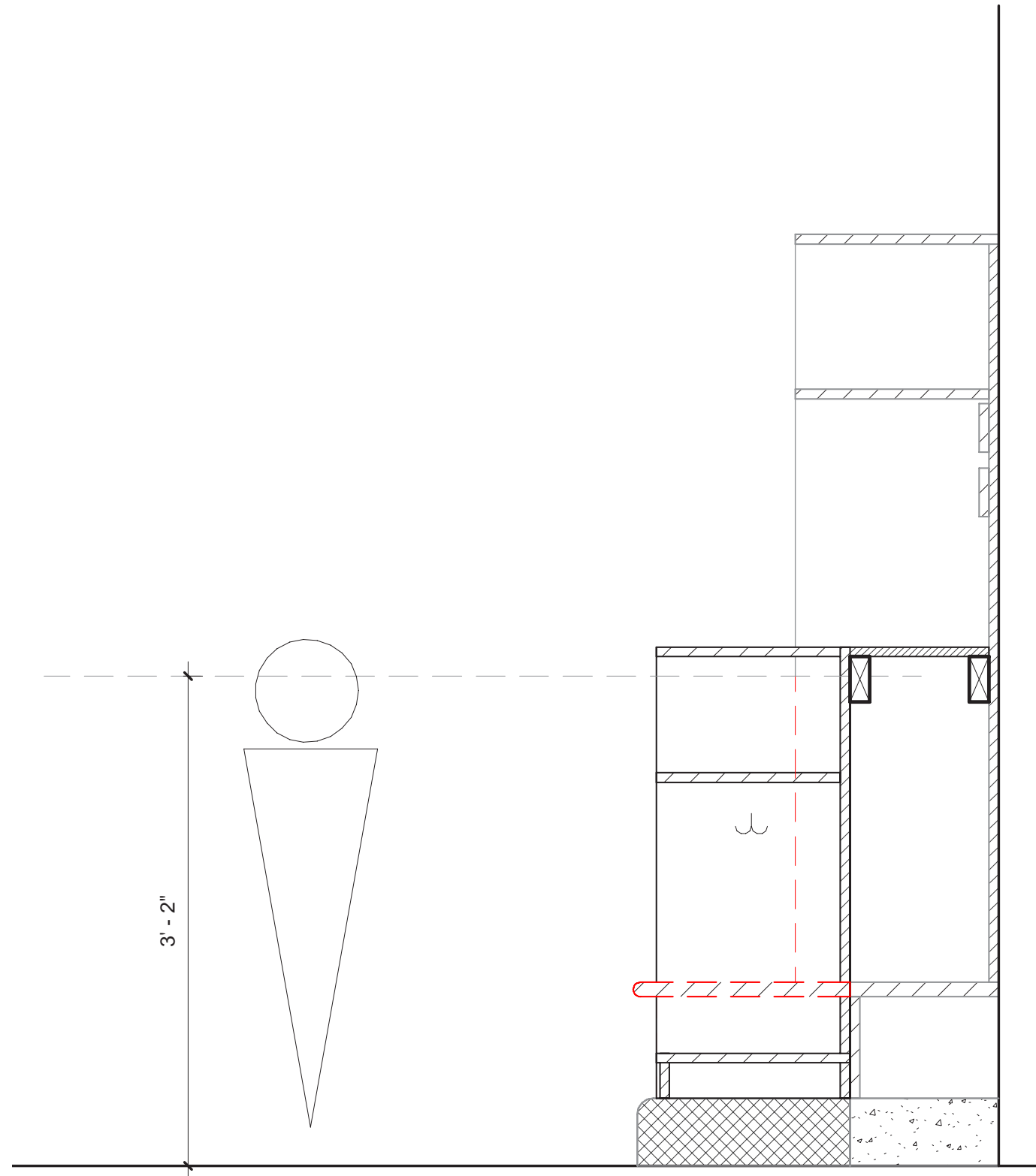
Remove portion of existing in order to install:

Whitney Brothers - 10 Section Coat Locker

Dimensions: 60.5" W x 14.75" D x 48" H

- Double tier, 12" wide cubbies
 - Max reach to hook would be about 46" (may be too far of reach)
 - We would not need additional storage space in the room likely.
- Can fit 3 of these sections, (30 lockers)

PRE-K CUBBIE MODIFICATIONS - OPTION C



Remove portion of existing in order to install:

Jonti-Craft - Toddler 5 Section Coat Locker

Dimensions: 35" H x 48" W x 15" D

- Single tier, 9.5" wide cubbies
- Five sections, each with two double coat hooks and an open cubbie on the top for plenty of storage.

THANK YOU!