

# NORTH SLOPE BOROUGH SCHOOL DISTRICT

## RESIDENTIAL LEARNING CENTER PROPOSAL

### PROJECT OVERVIEW



FEBRUARY 2020

## **EXECUTIVE SUMMARY**

### **REQUEST**

The North Slope Borough School District (NSBSD) requests 10 million dollars for capital expenditures to complete the renovation of a residential facility, purchase equipment for a Residential Learning Center (RLC), and build a teaching studio to distance deliver Career and Technical Education (CTE) and academic courses to village schools that will prepare students for employment and further education.

### **THE NEED**

The North Slope is the richest resource area in Alaska and one of the wealthiest resource areas in our nation, a region with billions of barrels of oil, trillions of cubic feet of natural gas, and untold other resources. The North Slope oil industry provides approximately 17,500 jobs. Unfortunately, less than 3,500 of those jobs are filled by North Slope Borough residents.

Too many students in our school district are simply not receiving an education that prepares them for the rich bounty of available jobs in the oil industry. This is due in-part to our immense size, the challenges of delivering education in perhaps the most remote region in our nation, and the fact that our public education system is currently unable to deliver courses students want and need to prepare them for the future.

At 89,000 square miles, we are the largest school district by geographic size in the United States. We operate K-12 schools in eight villages that span the width of northern Alaska from the Canadian border westward to Pt. Hope, the oldest continuous settlement in North America. Our eastern-most village, Kaktovik, lies closer to Inuvik Northwest Territories than to any village in our region. Our school district serves over 2,000 students with a total high school enrollment of 450 in high schools that vary in size from 12 to 56 students. None of our communities are connected by road.

The NSBSD is the only large rural school district in Alaska that does not have a nearby high school residential program that provides CTE courses. Completing our RLC will increase our ability to provide students with CTE and academic opportunities that will prepare them for employment and further education.

### **LONG-TERM COMMITMENT**

NSBSD, North Slope Borough, and a regional employer have taken lead roles and invested significant resources over a period of eight (8) years to develop the RLC. To date, a major employer has signed a 30-year lease for \$1.00 per year to provide a facility to be used as a dormitory for students. The estimated fair market lease value of the facility is four (4) million dollars annually. The North Slope Borough government has invested four (4) million dollars in the renovation project and has provided an additional two (2) million dollars toward developing the RLC program. The North Slope Borough will provide additional operating funds to help support the costs of delivering and sustaining the RLC program. Classroom space to support the RLC program has been allocated at Barrow High School.

## **PROJECT HISTORY**

Initiated by regional leaders in 2012, the RLC project has been carefully developed, vetted by North Slope residents and local employers, and approved by the Alaska Department of Education & Early Development. Student stipend funding to support the program has been approved by the Alaska State Legislature.

## **WORDS OF WISDOM**

**FALL 1973, OFFICIAL POSITION PAPER**

**NORTH SLOPE BOROUGH**

**RE: PROPOSED AD VALOREM TAX ON OIL PROPERTIES**

**A STATEMENT OF POLICY**

**BY EBEN HOPSON, MAYOR**

We wanted the right to send our children to schools operated by our own people serving on a local school board. We wanted a high school within our own area. We wanted to give our children the finest possible education, an education good enough to equip them to improve their world, even as we were attempting to improve our world.

**JAKE ADAMS, CHIEF OPERATING OFFICER**

**NORTH SLOPE BOROUGH**

**KEYNOTE SPEECH NORTH SLOPE WORKFORCE DEVELOPMENT SUMMIT**

**APRIL 13, 2013**

**BUILDING HUMAN CAPITAL**

I'm very proud of our people and of our accomplishments. By working together, North Slope leaders have made great progress in providing a better life for our residents.

Yet in spite of our wealth, in spite of our resources, in spite of all we have built, too few of our residents are prepared to participate in the best jobs available in our borough, corporations, education, healthcare, and oil industry because they lack the education, training, work ethic, or life skills necessary to get and hold a job.

# WHO ARE NSBSD'S CTE STUDENTS?



2018-2019 NSBSD AVERAGES



**40%**

Of CTE participants are female

**39%** Are economically disadvantaged

**26%** Are NTO\*

**11%** Are disabled

**2%** Are Migrant

**21%** Are EL†

\* Nontraditional Occupations

† English Learners

## DEMOGRAPHICS



👉 Alaska Native — 72.8%; 👉 Two or more races—10.4%;

👉 Asian—8.7%; 👉 Caucasian—5.2%;

👉 Pacific Islander—1.7%; 👉 Hispanic—<1%;

👉 Black—<1%

## CTE IN NSBSD



### 100% GRADUATION

CTE concentrators‡ are 24% more likely to graduate than their non-CTE counterparts.

‡ Students with ≥ 2.0 HS CTE credits



**2.7%**

Of NSBSD graduates are CTE concentrators



**35%**

Of students took at least one CTE class in high school

**50%**

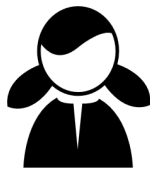
Of CTE concentrators go on to postsecondary, adv. training, the military, or employment.

2019 North Slope Borough School District overall graduation rate 77%

# WHO ARE ALASKA'S CTE STUDENTS?



2018-2019 STATEWIDE AVERAGES



**43%**

Of CTE participants are female

**41%** Are economically disadvantaged

**31%** Are NTO\*

**14%** Are disabled

**8.7%** Are Migrant

**6.5%** Are EL†

\* Nontraditional Occupations

† English Learners

## DEMOGRAPHICS



👤 Caucasian— 55%; 👤 Alaska Native—15%; 👤 Two or more races—10%; 👤 Asian—7%; 👤 Hispanic—6%;  
 👤 Black—3%; 👤 Pacific Islander—2.5%;  
 👤 American Indian—1%

## CTE IN ALASKA



### 95% GRADUATION

CTE concentrators‡ are 17% more likely to graduate than their non-CTE counterparts.

‡ Students with ≥ 2.0 HS CTE credits



**17.5%**

Alaskan graduates are CTE concentrators



**30%**

Of students took at least one CTE class in high school

**73%**

Of CTE concentrators go on to postsecondary, adv. training, the military, or employment.