



Collin College

2017 Capital Improvement Program
Monthly Report
August 2018

Collin County Community College District

Project Reference: 60541060
Project Number: 60541060

September 7, 2018

Quality information

Prepared by



Nick Fiehler
Program Controls Manager

Checked by



Nuria Cortes
Documents Control Manager

Approved By



Adrian Grimes
Program Director

Revision History

Revision	Revision date	Details	Authorized	Name	Position
First Publication	09/07/2018	August '18 Report	Yes	Adrian Grimes	Program Director

Distribution List

# Hard Copies	PDF Required	Association / Company Name
1		Ken Lynn / Collin College
1		Bill King / Collin College

Prepared for:

Collin County Community College District
3452 Spur 399
Suite 327
McKinney, TX 75069

Prepared by:

Nick Fiehler
Program Controls Manager
E: nfiehler.aecom@collin.edu

AECOM
13355 Noel Road
4th Floor
Dallas TX, 75240
aecom.com

Copyright © 2018 by AECOM

All rights reserved. No part of this copyrighted work may be reproduced, distributed, or transmitted in any form or by any means without the prior written permission of AECOM.

Table of Contents

1.	Introduction	5
2.	Executive Summary	5
3.	Scope.....	6
3.1	Phase 1	6
3.2	Phase 2	6
3.3	Phase 3	6
3.4	Phase 4	7
4.	Community.....	7
4.1	Project Teams.....	7
4.1.1	Phase 1	7
4.1.2	Phase 2	8
4.1.3	Phase 3	8
4.1.4	Phase 4	8
4.2	Current Personnel Estimate.....	9
4.3	Community Outreach.....	10
5.	Schedule.....	10
5.1	Program.....	10
5.2	Phase 1	11
5.3	Phase 2	12
5.4	Phase 3	13
5.5	Phase 4	13
6.	Budget	14
6.1	Program Summary.....	14
6.2	Phase 1	15
6.3	Phase 2	16
6.4	Phase 3	17
6.5	Phase 4	17
6.6	Phase A	18
6.7	Building Fund Reimbursement	19
7.	Completed Items.....	19
7.1	General Program	19
7.2	Procurement.....	19
7.3	Design	19
7.4	Pre-Construction.....	20
7.5	Construction	20
7.6	Acceptance and Close-Out.....	20
8.	Pending Items.....	21
8.1	General Program	21
8.2	Procurement.....	21
8.3	Design	21
8.4	Pre-Construction.....	21
8.5	Construction	21
8.6	Acceptance and Close-Out.....	21
	Appendix A – Schedule Milestone Definitions	22

1. Introduction

On May 6, 2017, voters approved Collin College's \$600 million bond proposal to facilitate a long-range plan to accommodate the projected population growth in Collin County over the next two decades. The program consists of 4 new campuses, 3 new facilities, 2 repurposed existing spaces, and 3 wayfinding projects (on existing sites). The program is scheduled to be completed in 4 phases over 7 years with projects opening in 2020.

On May 16, 2017, in a special session, the Board of Trustees granted the District President authority to enter and negotiate into contract with AECOM Technical Services, Inc. (AECOM) to provide Program Management Services to the Collin College 2017 Capital Improvement Program. On May 25, 2017, Collin College issued a Notice to Proceed to AECOM. As part of these services, AECOM will deliver a monthly report to provide status and progress of key aspects of the Program.

2. Executive Summary

The Program is progressing as planned with no major issues to report at this time.

Completed and Pending Items

- [McCarthy Building Companies, Inc. was issued a Notice to Proceed for the construction of the Technical Campus](#)
- [Skanska USA Building, Inc. submitted a Guaranteed Maximum Price for the construction of the Wylie Campus, which was approved by the Collin College Board of Trustees](#)
- [Architectural kick-off meetings were held with Collin College, AECOM and the Phase 2 architectural teams](#)
- [Issuance of a Notice to Proceed to Skanska USA Building, Inc. for the Construction Phase services of the Wylie Campus is pending the execution of the Guaranteed Maximum Price contract amendment](#)
- [Collin College Board of Trustees approved the Phase 2 Construction Manager recommendations – issuance of Notice to Proceeds to the Phase 2 Construction Managers is pending execution of contracts](#)

Items of close attention

- Potential roadway intersection improvements currently required by the City of Wylie for the Wylie Campus
- Approval by the City of Wylie of a traffic signal on the south side of the site for the Wylie Campus
- Approval by the United States Army Corp of Engineers of wetlands mitigation for the Wylie Campus
- Coordination with the City of Allen to work around document approval timeframes to allow for scheduled commencement of construction for the Technical Campus
- The Wylie Campus design and construction schedules are being monitored closely to ensure construction can complete in Fall 2020, while maintaining budget and quality of construction

Budget Summary

- [\\$227,637,828 of the \\$600,000,000 has been committed to-date in the form of contracts with various vendors. This represents 37.94% of the overall program budget committed.](#)
- [\\$63,408,681 of the \\$227,637,828 committed amount has been expended to-date. This represents 27.86% of the commitments expended and 10.57% of the program budget expended.](#)

3. Scope

3.1 Phase 1

- Wylie Campus
 - Construction of a campus on a new approximately 97-acre site
 - The campus is planned to include:
 - Campus Commons
 - Learning Resource Center / Library
 - Student Center
- Technical Campus
 - Construction of a Technical Campus on a new 32-acre site in Allen, Texas
 - Programs planned for inclusion include:
 - Advanced Manufacturing, Aviation Technology, Construction, Health Science, Logistics and Transportation

3.2 Phase 2

- Celina Campus
 - Construction of a campus on a new approximately 75-acre site
 - The campus is planned to include:
 - Student Union / Workforce / Instructional Building
- Farmersville Campus
 - Construction of a campus on a new approximately 76-acre site
 - The campus is planned to include:
 - Student Union / Workforce / Instructional Building
- Frisco Campus
 - Construction of a new facility on an existing campus
 - The campus is planned to include:
 - IT Center of Excellence

3.3 Phase 3

- Frisco Campus
 - Construction of a new facility on an existing campus
 - The campus is planned to include:
 - Welcome Center
- McKinney Campus
 - Construction of a new facility on an existing campus
 - The campus is planned to include:
 - Welcome Center

3.4 Phase 4

- Frisco Campus
 - Renovations / Repurposing of Existing Buildings
- McKinney Campus
 - Renovations / Repurposing of Existing Buildings
- McKinney Campus
 - Traffic Infrastructure & Wayfinding
- Frisco Campus
 - Wayfinding
- Plano Campus
 - Wayfinding

4. Community

4.1 Project Teams

4.1.1 Phase 1

- Wylie Campus
 - Program Manager: AECOM Technical Services, Inc. (under contract)
 - A/E: Page Southerland Page, Inc. (under contract)
 - MEP: Reed, Wells, Benson & Co.
 - Civil Engineer: Pacheco Koch Consulting Engineers, Inc.
 - Cost Consulting: Vermeulens
 - Construction Manager-at-Risk: Skanska USA Building, Inc. (under contract)
 - Commissioning Agent: Bath Group, Inc. (under contract)
- Technical Campus
 - Program Manager: AECOM Technical Services, Inc. (under contract)
 - A/E: Perkins+Will, Inc. (under contract)
 - Associate Architect: Hoefer Wysocki Architecture
 - MEP: Purdy McGuire
 - Civil Engineer: Pacheco Koch Consulting Engineers, Inc.
 - Structural Engineer: L.A. Fuess Partners, Inc.
 - Cost Consulting: Vermeulens
 - Construction Manager-at-Risk: McCarthy Building Companies, Inc. (under contract)
 - Commissioning Agent: Farnsworth (under contract)

4.1.2 Phase 2

- Celina Campus
 - Program Manager: AECOM (under contract)
 - A/E: Beck Architecture, LLC (under contract)
 - Construction Manager-at-Risk: [JT Vaughn Construction \(contract pending\)](#)
- Farmersville Campus
 - Program Manager: AECOM (under contract)
 - A/E: A/E: Beck Architecture, LLC (under contract)
 - Construction Manager-at-Risk: [JT Vaughn Construction \(contract pending\)](#)
- Frisco Campus (IT Center of Excellence)
 - Program Manager: AECOM (under contract)
 - A/E: Perkins+Will, Inc. (under contract)
 - Construction Manager-at-Risk: [JE Dunn Construction \(contract pending\)](#)

4.1.3 Phase 3

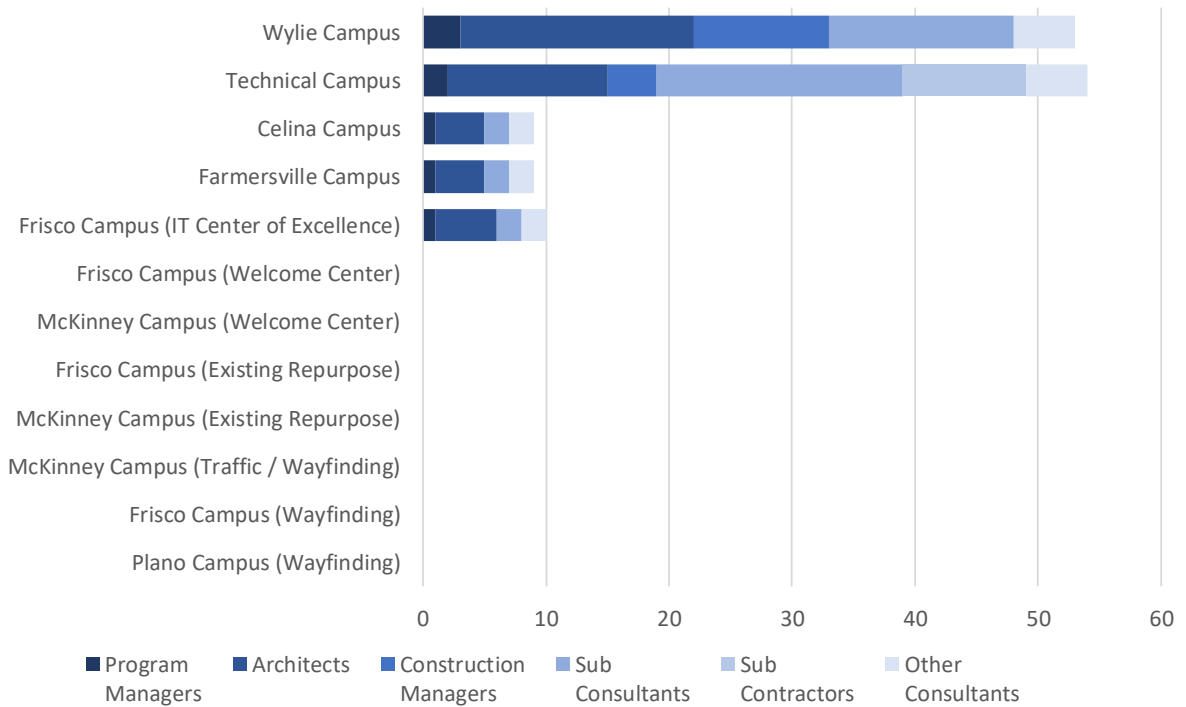
- Frisco Campus (Welcome Center)
 - Program Manager: (AECOM option expiration date: August 2019)
 - A/E: TBD
 - Construction Manager-at-Risk: TBD
- McKinney Campus (Welcome Center)
 - Program Manager: (AECOM option expiration date: August 2019)
 - A/E: TBD
 - Construction Manager-at-Risk: TBD

4.1.4 Phase 4

- Frisco Campus (Existing Repurpose)
 - Program Manager: (AECOM option expiration date: May 2021)
 - A/E: TBD
 - Construction Manager-at-Risk: TBD
- McKinney Campus (Existing Repurpose)
 - Program Manager: (AECOM option expiration date: May 2021)
 - A/E: TBD
 - Construction Manager-at-Risk: TBD
- McKinney Campus (Traffic / Wayfinding)
 - Program Manager: (AECOM option expiration date: May 2021)
 - A/E: TBD

- Construction Manager-at-Risk: TBD
- Frisco Campus (Wayfinding)
 - Program Manager: (AECOM option expiration date: May 2021)
 - A/E: TBD
 - Construction Manager-at-Risk: TBD
- Plano Campus (Wayfinding)
 - Program Manager: (AECOM option expiration date: May 2021)
 - A/E: TBD
 - Construction Manager-at-Risk: TBD

4.2 Current Personnel Estimate



It is estimated that the Program Managers, Architects, Construction Managers, Sub-Consultants, and Sub-Contractors, under contract with Collin College for the 2017 Capital Improvement Program, have 135 employees contributing to the program’s progress.

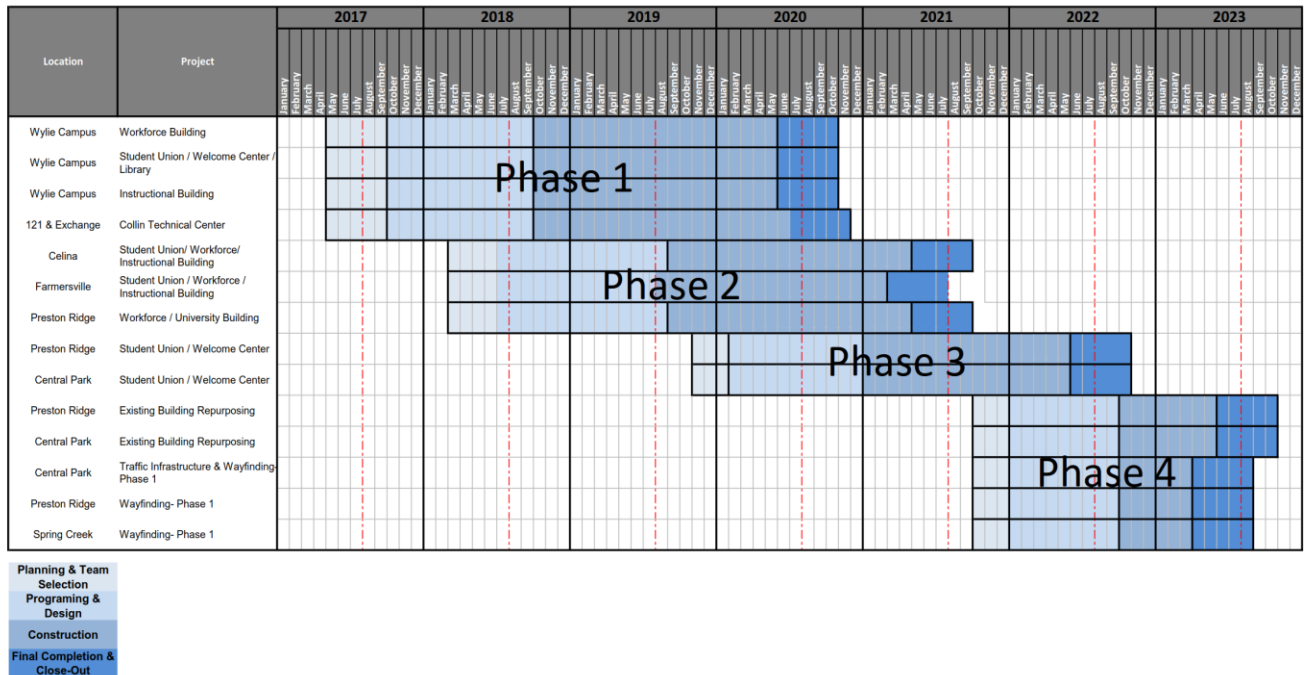
4.3 Community Outreach

- Collin College 2017 Capital Improvement Program Website
 - o <https://CollinCollege2017CIP.com>
 - o Includes the following features:
 - Program Overview
 - Project Scopes
 - Project Schedules
 - Project Budgets
 - Progress Photos/Renderings
 - Live On-Site Camera Feeds

5. Schedule

Appendix A – Schedule Milestone Definitions includes listing of milestones and definitions

5.1 Program



5.2 Phase 1

Wylie Campus

Activity	Baseline Finish	Planned Finish		Actual Finish	
BOT Approval of Program Manager	May 16, 2017	May 16, 2017	↑	May 16, 2017	✓
BOT Approval of A/E Procurement Method	May 23, 2017	May 23, 2017	↑	May 23, 2017	✓
BOT Approval of Construction Delivery Method	May 23, 2017	May 23, 2017	↑	May 23, 2017	✓
BOT Approval of Recommended Firms	August 22, 2017	August 22, 2017	↑	August 22, 2017	✓
Architect Mobilized	September 12, 2017	September 29, 2017	↓	September 28, 2017	✓
GMP Construction Documents Submittal	June 26, 2018	June 26, 2018	↑	June 26, 2018	✓
BOT Approval of GMP	August 28, 2018	August 28, 2018	↑	August 28, 2018	✓
Contractor Mobilized	September 10, 2018	September 12, 2018	↘	-	
Foundations Complete	TBD	TBD		-	
Building Top Out	TBD	TBD		-	
Building Dry-In	TBD	TBD		-	
Building Energized	TBD	TBD		-	
Building Climatized	TBD	TBD		-	
Temporary CO	TBD	TBD		-	
Final CO	TBD	TBD		-	
Substantial Completion	May 1, 2020	May 1, 2020	↑	-	
Final Completion	July 1, 2020	July 1, 2020	↑	-	
Student Occupancy	August 2020	August 2020	↑	-	

Technical Campus

Activity	Baseline Finish	Planned Finish		Actual Finish	
BOT Approval of Program Manager	May 16, 2017	May 16, 2017	↑	May 16, 2017	✓
BOT Approval of A/E Procurement Method	May 23, 2017	May 23, 2017	↑	May 23, 2017	✓
BOT Approval of Construction Delivery Method	May 23, 2017	May 23, 2017	↑	May 23, 2017	✓
BOT Approval of Recommended Firms	August 22, 2017	August 22, 2017	↑	August 22, 2017	✓
Architect Mobilized	September 12, 2017	September 29, 2017	↓	September 28, 2017	✓
GMP Construction Documents Submittal	April 16, 2018	April 16, 2018	↑	April 19, 2018	✓
BOT Approval of GMP	June 26, 2018	June 26, 2018	↑	June 26, 2018	✓
Contractor Mobilized	July 6, 2018	July 20, 2018	↘	July 26, 2018	✓
Foundations Complete	September 23, 2019	September 23, 2019	↑	-	
Building Top Out	November 18, 2019	November 18, 2019	↑	-	
Building Dry-In	December 20, 2019	December 20, 2019	↑	-	
Building Energized	TBD	TBD		-	
Building Climatized	TBD	TBD		-	
Temporary CO	TBD	TBD		-	
Final CO	June 11, 2020	June 11, 2020	↑	-	
Substantial Completion	June 25, 2020	June 25, 2020	↑	-	
Final Completion	August 25, 2020	August 25, 2020	↑	-	
Student Occupancy	August 2020	August 2020	↑	-	

5.3 Phase 2

Celina Campus

Activity	Baseline Finish	Planned Finish		Actual Finish	
BOT Approval of Program Manager	September 25, 2018	February 14, 2018	↑	February 14, 2018	✓
BOT Approval of A/E Procurement Method	September 25, 2018	March 27, 2018	↑	March 27, 2018	✓
BOT Approval of Construction Delivery Method	September 25, 2018	March 27, 2018	↑	March 27, 2018	✓
BOT Approval of Recommended A/E Firm	June 26, 2018	June 26, 2018	↑	June 26, 2018	✓
BOT Approval of Recommended CM Firm	August 2018	August 2018	↑	August 28, 2018	✓
Architect Mobilized	July 24, 2018	July 24, 2018	↑	July 31, 2018	✓
Schmatic Design Submittal	TBD	TBD		-	
Design Development Submittal	TBD	TBD		-	
Construction Document Submittal	TBD	TBD		-	
Contractor Mobilized	TBD	TBD		-	
Student Occupancy	August 2021	August 2021	↑	-	

Farmersville Campus

Activity	Baseline Finish	Planned Finish		Actual Finish	
BOT Approval of Program Manager	September 25, 2018	February 14, 2018	↑	February 14, 2018	✓
BOT Approval of A/E Procurement Method	September 25, 2018	March 27, 2018	↑	March 27, 2018	✓
BOT Approval of Construction Delivery Method	September 25, 2018	March 27, 2018	↑	March 27, 2018	✓
BOT Approval of Recommended A/E Firm	June 26, 2018	June 26, 2018	↑	June 26, 2018	✓
BOT Approval of Recommended CM Firm	August 2018	August 2018	↑	August 28, 2018	✓
Architect Mobilized	July 24, 2018	July 24, 2018	↑	July 31, 2018	✓
Schmatic Design Submittal	TBD	TBD		-	
Design Development Submittal	TBD	TBD		-	
Construction Document Submittal	TBD	TBD		-	
Contractor Mobilized	TBD	TBD		-	
Student Occupancy	August 2021	August 2021	↑	-	

Frisco Campus (IT Center of Excellence)

Activity	Baseline Finish	Planned Finish		Actual Finish	
BOT Approval of Program Manager	September 25, 2018	February 14, 2018	↑	February 14, 2018	✓
BOT Approval of A/E Procurement Method	September 25, 2018	March 27, 2018	↑	March 27, 2018	✓
BOT Approval of Construction Delivery Method	September 25, 2018	March 27, 2018	↑	March 27, 2018	✓
BOT Approval of Recommended A/E Firm	June 26, 2018	June 26, 2018	↑	June 26, 2018	✓
BOT Approval of Recommended CM Firm	August 2018	August 2018	↑	August 28, 2018	✓
Architect Mobilized	July 24, 2018	July 24, 2018	↑	July 31, 2018	✓
Schmatic Design Submittal	TBD	TBD		-	
Design Development Submittal	TBD	TBD		-	
Construction Document Submittal	TBD	TBD		-	
Contractor Mobilized	TBD	TBD		-	
Student Occupancy	August 2021	August 2021	↑	-	

5.4 Phase 3

Frisco Campus (Welcome Center)

Activity	Baseline Finish	Planned Finish		Actual Finish
BOT Approval of Program Manager	November 2019	November 2019	↑	-
BOT Approval of A/E Procurement Method	November 2019	November 2019	↑	-
BOT Approval of Construction Delivery Method	November 2019	November 2019	↑	-
Student Occupancy	August 2022	August 2022	↑	-

McKinney Campus (Welcome Center)

Activity	Baseline Finish	Planned Finish		Actual Finish
BOT Approval of Program Manager	November 2019	November 2019	↑	-
BOT Approval of A/E Procurement Method	November 2019	November 2019	↑	-
BOT Approval of Construction Delivery Method	November 2019	November 2019	↑	-
Student Occupancy	August 2022	August 2022	↑	-

5.5 Phase 4

Frisco Campus (Existing Repurpose)

Activity	Baseline Finish	Planned Finish		Actual Finish
BOT Approval of Program Manager	October 2021	October 2021	↑	-
BOT Approval of A/E Procurement Method	October 2021	October 2021	↑	-
BOT Approval of Construction Delivery Method	October 2021	October 2021	↑	-
Student Occupancy	August 2023	August 2023	↑	-

McKinney Campus (Existing Repurpose)

Activity	Baseline Finish	Planned Finish		Actual Finish
BOT Approval of Program Manager	October 2021	October 2021	↑	-
BOT Approval of A/E Procurement Method	October 2021	October 2021	↑	-
BOT Approval of Construction Delivery Method	October 2021	October 2021	↑	-
Student Occupancy	August 2023	August 2023	↑	-

McKinney Campus (Traffic / Wayfinding)

Activity	Baseline Finish	Planned Finish		Actual Finish
BOT Approval of Program Manager	October 2021	October 2021	↑	-
BOT Approval of A/E Procurement Method	October 2021	October 2021	↑	-
BOT Approval of Construction Delivery Method	October 2021	October 2021	↑	-
Student and Staff Use	August 2023	August 2023	↑	-

Frisco Campus (Wayfinding)

Activity	Baseline Finish	Planned Finish		Actual Finish
BOT Approval of Program Manager	October 2021	October 2021	↑	-
BOT Approval of A/E Procurement Method	October 2021	October 2021	↑	-
BOT Approval of Construction Delivery Method	October 2021	October 2021	↑	-
Student and Staff Use	August 2023	August 2023	↑	-

Plano Campus (Wayfinding)

Activity	Baseline Finish	Planned Finish		Actual Finish
BOT Approval of Program Manager	October 2021	October 2021	↑	-
BOT Approval of A/E Procurement Method	October 2021	October 2021	↑	-
BOT Approval of Construction Delivery Method	October 2021	October 2021	↑	-
Student and Staff Use	August 2023	August 2023	↑	-

6. Budget

6.1 Program Summary

Program Wide Budget

Budget Group	Original Budget	Current Budget	Commitments	Expenditures	% of Budget Committed	% of Commitment Expended
Management, Design, & Pre-Construction	\$54,010,598	\$52,054,136	\$36,090,432	\$14,581,493	69%	40%
Investigation, Testing & Verification	\$9,330,450	\$9,312,900	\$946,542	\$226,135	10%	24%
Construction, Equipment & Furnishings	\$463,778,252	\$503,986,909	\$161,285,076	\$19,285,275	32%	12%
Misc.	\$439,079	\$512,859	\$82,293	\$82,293	16%	100%
Contingency	\$21,291,621	\$17,299,711	\$0	\$0	0%	0%
Total Project Budget	\$600,000,000	\$600,000,000	\$227,637,828	\$63,408,681		
% of Total Project Budget Committed		37.94%				
% of Total Commitments Expended			27.86%			
% of Total Project Budget Expended				10.57%		

6.2 Phase 1

Wylie Campus

Budget Group	Original Budget	Current Budget	Commitments	Expenditures	% of Budget Committed	% of Commitment Expended
Management, Design, & Pre-Construction	\$15,051,440	\$12,793,572	\$12,679,455	\$7,356,322	99%	58%
Investigation, Testing & Verification	\$2,679,247	\$2,661,697	\$175,250	\$117,933	7%	67%
Construction, Equipment & Furnishings	\$133,174,284	\$144,635,022	\$8,621,356	\$8,621,356	6%	100%
Misc.	\$126,082	\$177,686	\$53,134	\$53,134	30%	100%
Contingency	\$6,571,649	\$5,816,812	\$0	\$0	0%	0%
Total Project Budget	\$157,602,702	\$166,084,789	\$21,529,195	\$16,148,745		
% of Total Project Budget Committed	12.96%					
% of Total Commitments Expended	75.01%					
% of Total Project Budget Expended	9.72%					

Technical Campus

Budget Group	Original Budget	Current Budget	Commitments	Expenditures	% of Budget Committed	% of Commitment Expended
Management, Design, & Pre-Construction	\$14,713,206	\$13,363,255	\$13,258,912	\$7,105,171	99%	54%
Investigation, Testing & Verification	\$2,619,039	\$2,619,039	\$700,612	\$94,102	27%	13%
* Construction, Equipment & Furnishings	\$130,181,602	\$159,299,521	\$152,663,720	\$10,663,919	96%	7%
Misc.	\$123,249	\$142,065	\$22,838	\$22,838	16%	100%
Contingency	\$6,423,972	\$1,698,927	\$0	\$0	0%	0%
Allen ISD Reimbursement	-	(\$12,000,000)	-	-		
Allen EDC Grant	-	(\$400,000)	-	-		
Total Project Budget	\$154,061,068	\$164,722,807	\$166,646,082	\$17,886,030		
% of Total Project Budget Committed	101.17%					
% of Total Commitments Expended	10.73%					
% of Total Project Budget Expended	10.86%					

* Actual Budget from bond funds is \$146,899,521 (\$159,299,521 less \$12,000,000 Allen ISD Reimbursement and \$400,000 Allen EDC Grant)

6.3 Phase 2

Celina Campus

Budget Group	Original Budget	Current Budget	Commitments	Expenditures	% of Budget Committed	% of Commitment Expended
Management, Design, & Pre-Construction	\$5,078,807	\$4,433,856	\$3,728,785	\$46,560	84%	1%
Investigation, Testing & Verification	\$936,908	\$936,908	\$27,400	\$0	3%	0%
Construction, Equipment & Furnishings	\$46,569,862	\$46,569,862	\$0	\$0	0%	0%
Misc.	\$44,090	\$47,450	\$5,082	\$5,082	11%	100%
Contingency	\$2,482,596	\$3,124,187	\$0	\$0	0%	0%
Total Project Budget	\$55,112,263	\$55,112,263	\$3,761,267	\$51,642		
% of Total Project Budget Committed	6.82%					
% of Total Commitments Expended	1.37%					
% of Total Project Budget Expended	0.09%					

Farmersville Campus

Budget Group	Original Budget	Current Budget	Commitments	Expenditures	% of Budget Committed	% of Commitment Expended
Management, Design, & Pre-Construction	\$2,539,404	\$2,427,066	\$2,074,530	\$23,280	85%	1%
Investigation, Testing & Verification	\$468,453	\$468,453	\$27,510	\$14,100	6%	51%
Construction, Equipment & Furnishings	\$23,284,932	\$23,284,932	\$0	\$0	0%	0%
Misc.	\$22,045	\$22,045	\$1,240	\$1,240	6%	100%
Contingency	\$1,241,298	\$1,353,636	\$0	\$0	0%	0%
Total Project Budget	\$27,556,132	\$27,556,132	\$2,103,280	\$38,620		
% of Total Project Budget Committed	7.63%					
% of Total Commitments Expended	1.84%					
% of Total Project Budget Expended	0.14%					

Frisco Campus (IT Center of Excellence)

Budget Group	Original Budget	Current Budget	Commitments	Expenditures	% of Budget Committed	% of Commitment Expended
Management, Design, & Pre-Construction	\$5,472,853	\$4,738,810	\$3,978,750	\$50,160	84%	1%
Investigation, Testing & Verification	\$1,009,600	\$1,009,600	\$15,770	\$0	2%	0%
Construction, Equipment & Furnishings	\$50,183,042	\$50,183,042	\$0	\$0	0%	0%
Misc.	\$47,510	\$47,510	\$0	\$0	0%	0%
Contingency	\$2,675,210	\$3,409,253	\$0	\$0	0%	0%
Total Project Budget	\$59,388,215	\$59,388,215	\$3,994,520	\$50,160		
% of Total Project Budget Committed	6.73%					
% of Total Commitments Expended	1.26%					
% of Total Project Budget Expended	0.08%					

6.4 Phase 3

Frisco Campus (Welcome Center)

Budget Group	Original Budget	Current Budget	Commitments	Expenditures	% of Budget Committed	% of Commitment Expended
Total Project Budget	\$26,329,788	\$26,329,788	\$0	\$0		
% of Total Project Budget Committed	0.00%					
% of Total Commitments Expended	0.00%					
% of Total Project Budget Expended	0.00%					

McKinney Campus (Welcome Center)

Budget Group	Original Budget	Current Budget	Commitments	Expenditures	% of Budget Committed	% of Commitment Expended
Total Project Budget	\$36,861,704	\$36,861,704	\$0	\$0		
% of Total Project Budget Committed	0.00%					
% of Total Commitments Expended	0.00%					
% of Total Project Budget Expended	0.00%					

6.5 Phase 4

Frisco Campus (Existing Repurpose)

Budget Group	Original Budget	Current Budget	Commitments	Expenditures	% of Budget Committed	% of Commitment Expended
Total Project Budget	\$7,321,091	\$7,321,091	\$0	\$0		
% of Total Project Budget Committed	0.00%					
% of Total Commitments Expended	0.00%					
% of Total Project Budget Expended	0.00%					

McKinney Campus (Existing Repurpose)

Budget Group	Original Budget	Current Budget	Commitments	Expenditures	% of Budget Committed	% of Commitment Expended
Total Project Budget	\$9,151,364	\$9,151,364	\$0	\$0		
% of Total Project Budget Committed	0.00%					
% of Total Commitments Expended	0.00%					
% of Total Project Budget Expended	0.00%					

McKinney Campus (Traffic / Wayfinding)

Budget Group	Original Budget	Current Budget	Commitments	Expenditures	% of Budget Committed	% of Commitment Expended
Total Project Budget	\$7,826,795	\$7,826,795	\$370,000	\$0		
% of Total Project Budget Committed	4.73%					
% of Total Commitments Expended	0.00%					
% of Total Project Budget Expended	0.00%					

Frisco Campus (Wayfinding)

Budget Group	Original Budget	Current Budget	Commitments	Expenditures	% of Budget Committed	% of Commitment Expended
Total Project Budget	\$2,546,293	\$2,546,293	\$0	\$0		
% of Total Project Budget Committed	0.00%					
% of Total Commitments Expended	0.00%					
% of Total Project Budget Expended	0.00%					

Plano Campus (Wayfinding)

Budget Group	Original Budget	Current Budget	Commitments	Expenditures	% of Budget Committed	% of Commitment Expended
Total Project Budget	\$5,092,585	\$5,092,585	\$0	\$0		
% of Total Project Budget Committed	0.00%					
% of Total Commitments Expended	0.00%					
% of Total Project Budget Expended	0.00%					

6.6 Phase A

Public Safety Training Center

Budget Group	Current Budget	Commitments	Expenditures	% of Budget Committed	% of Commitment Expended
Construction Costs	\$29,233,485	\$29,233,485	\$29,233,485	100%	100%
Total Project Budget	\$29,233,485	\$29,233,485	\$29,233,485		

* This project was not managed by AECOM. However, it is included in the report to make a complete report of Bond costs.

6.7 Building Fund Reimbursement

Program Level

Budget Group	Original Budget	Current Budget	Commitments	Expenditures	% of Budget Committed	% of Commitment Expended
Building Fund Reimbursement	\$51,150,000	\$0	\$0	\$0	0%	0%
Program Contingency	\$0	\$2,772,689	\$0	\$0	0%	0%
Total Project Budget	\$51,150,000	\$2,772,689	\$0	\$0		

* Building Fund Reimbursements for Wylie Campus land, Technical Campus land, and Public Safety Training Center construction costs were completed in May '18. Budgets, Commitments and Expenditures for these costs are reflected in each project.

7. Completed Items

7.1 General Program

- AECOM conducted coordination meetings with the Executive Committee on August 13th, 20th & 27th
- Collin College, AECOM and MDD met on August 16th to review audit processes for the Program
- AECOM provided an overview of the July '18 Monthly Report to the Collin College Campus Facilities & Construction Committee on August 21st

7.2 Procurement

- RFQ 4159 & 4160 (A/E Services) debriefing was conducted with LPA on August 1st
- AECOM and Collin College conducted a Program Procurement review meetings on August 1st, 15th & 29th
- Collin College and AECOM met on August 7th to review professional service budgets from fiscal year 2019
- RFQ 4159 & 4160 (A/E Services) debriefing was conducted with GFF on August 16th
- On August 28th, the Collin College Board of Trustees approved the Skanska USA Building, Inc.'s Guaranteed Maximum Price for the Construction of the Wylie Campus
- On August 28th, the Collin College Board of Trustees approved the recommendation of JT Vaughn Construction to provide Construction Management services for the Celina Campus and Farmersville Campus
- On August 28th, the Collin College Board of Trustees approved the recommendation of JE Dunn Construction to provide Construction Management services for the IT Center of Excellence at the Frisco Campus

7.3 Design

- Collin College and AECOM conducted a review of access control requirements for new construction projects on August 8th
- Collin College, AECOM, and Page Southerland Page, Inc. met on August 9th to review dining design options for the Wylie Campus
- Collin College, AECOM and Beck Architecture, LLC conducted a Phase 2 Architect kick-off meeting on August 9th for the Celina Campus and Farmersville Campus
- Collin College, AECOM and Perkins+Will, Inc. conducted a Phase 2 Architect kick-off meeting on August 15th for the IT Center of Excellence

- Collin College, AECOM, Page Southerland Page, Inc. and Skanska USA Building, Inc. met on August 20th to review A/V & IT requirements for the Wylie Campus
- Collin College and AECOM met on August 20th to review kitchen requirements for the conference space at the Wylie Campus
- Perkins+Will, Inc. conducted an interiors visioning review with Collin College and AECOM on August 23rd for the Technical Campus
- Collin College, AECOM and Perkins+Will, Inc. met on August 30th to review IT requirements for the Technical Campus
- Beck Architecture, LLC conducted project visioning sessions with Collin College and AECOM for the Celina Campus and Farmersville Campus on August 31st

7.4 Pre-Construction

- AECOM, Page Southerland Page, Inc. and Skanska USA Building, Inc. met with the City of Wylie on August 1st to discuss traffic signal and roadway improvements for the Wylie Campus
- Collin College, Skanska USA Building, Inc. and AECOM met at the Wylie Campus site on August 1st to discuss logistics for the ground breaking ceremony
- Perkins+Will, Inc., McCarthy Building Companies, Inc. and AECOM conducted a constructability review of the Technical Campus construction documents on August 2nd
- Skanska USA Building, Inc. presented the Wylie Campus Guaranteed Maximum Price submittal to Collin College and AECOM on August 7th
- AECOM, Page Southerland Page, Inc. and Skanska USA Building, Inc. conducted a weekly design review meetings for the Wylie Campus on August 7th
- AECOM, Page Southerland Page, Inc. and Skanska USA Building, Inc. conducted a permitting review meetings with the City of Wylie on August 9th, 16th, 23rd & 30th to discuss to discuss permitting requirements for the Wylie Campus
- AECOM, Page Southerland Page, Inc. and Skanska USA Building, Inc. conducted a weekly design review meeting for the Wylie Campus on August 14th
- AECOM, Perkins+Will, Inc. and McCarthy Building Companies, Inc. conducted a weekly design review meeting for the Technical Campus on August 14th
- Collin College, McCarthy Building Companies, Inc. and AECOM met at the Technical Campus site on August 16th to discuss additional logistics for the ground breaking ceremony
- AECOM, Skanska USA Building, Inc. and Wood Environmental met on August 24th to discuss material testing related to the Wylie Campus
- Collin College and AECOM met on August 29th to discuss logistics related to the ground breaking ceremony at the Wylie Campus

7.5 Construction

- McCarthy was issued a Notice to Proceed for Construction on August 2nd
- McCarthy conducted a Pre-Construction meeting for soil stabilization activities on August 7th
- McCarthy began on-site earthwork operations on August 15th

7.6 Acceptance and Close-Out

- No Acceptance and Close-Out Phase Items were completed in July

8. Pending Items

8.1 General Program

- No General Program activities are pending at this time

8.2 Procurement

- [Issuance of a Notice to Proceed to Skanska USA Building, Inc. for the construction of the Wylie Campus](#)
- [Issuance of Notices to Proceed to the recommended Phase 2 Construction Managers for Pre-Construction services on the Phase 2 projects](#)

8.3 Design

- Interior concept design completions for the Wylie Campus and Technical Campus
- Visioning and Pre-programming for the Phase 2 projects

8.4 Pre-Construction

- Continued coordination with the City of Wylie and City of Allen for permitting

8.5 Construction

- [Roadwork and utility installations at the Technical Campus are pending the issuance of the site development permit from the City of Allen](#)

8.6 Acceptance and Close-Out

- No Acceptance and Close-Out activities are underway at this time

Appendix A – Schedule Milestone Definitions

BOT Approval of Program Manager – Establishes that a project is Board of Trustees approved and the Program Manager shall begin efforts to complete the project.

BOT Approval of A/E Procurement Method – Approval by the Board of Trustees of the methods used to procure the Architect.

BOT Approval of Construction Delivery Method – Approval by the Board of Trustees of the construction delivery method. Typically Construction Manager-at-Risk or Competitive Sealed Proposal.

BOT Approval of Recommended Firms – Acceptance of firm recommendations by the Board of Trustees.

Architect Mobilized – Completion of negotiations, execution of contracts, and issuance of Notice to Proceed.

Schematic Design Submittal – Initial design schemes that seek to define the general scope and conceptual design of the project including scale and relationships between building components.

Design Development Submittal – Site Plans, Elevations & Floorplans that define and describe all important aspects of the project.

Construction Document Submittal – Detailed specifications, details, illustrations, and instructions on all aspects of the facility. Used to obtain project bids and to construct the facility.

BOT Approval of GMP (Site) – Board of Trustees approval of the Guaranteed Maximum Price to complete the site work.

Contractor Mobilized – Notice to Proceed issued for the Site Work. Contractor on site and ready to start.

BOT Approval of GMP (Facility) – Board of Trustees approval of the Guaranteed Maximum Price to complete the facility work.

Foundations Complete – Mass grading & piers complete, project. There after the project is less affected by rain, mud and subterranean conditions.

Building Top Out – All major structural components are in place (including the highest component) for the facility. Project less susceptible to material shortages or delays.

Building Dry-In – Roofing and windows are complete and the building is water resistant. The project overall is less susceptible to weather as most of the work is conducted indoors.

Building Energized – The building has power. This is an indication that utilities are in place, significant electrical work is complete, and many significant city inspections have been passed.

Building Climatized – The HVAC system is functional. Weather sensitive materials can be installed.

Temporary CO – The city has agreed that the building is significantly constructed in accordance with local codes and is occupiable. There may be outstanding landscaping requirements.

Final CO – The city has agreed that the building is constructed in accordance with local codes and is occupiable. There may be outstanding landscaping requirements

Substantial Completion – All materials are in place, all systems are functional, and the owner can use the building for its intended purpose with only minor punch-list items remaining. Warranties will commence.

Final Completion – All punchlist items are complete. The Contractor is complete.

Student Occupancy – Success!