



PROPOSAL

Aledo ISD

Aledo HS Auditorium Audio Upgrades

DATE

Friday, 07 March 2025

PREPARED BY

Chris Chandler

Design Consultant

Scope of Work

Proposal Number: J25220020

Proposal Date: 3/7/2025

Prepared for: Aledo ISD

Attn: Jeff Mabray

Phone:

Email:

Prepared by: Chris Chandler

Phone: 214-315-6515

Email: chris.chandler@cti.com

Bill to: Aledo ISD
1008 Bailey Ranch Road
Aledo, TX
76008

Ship to: Aledo ISD
1008 Bailey Ranch Road
Aledo, TX
76008

Your Investment

Below is the cost of this solution based on the outlined scope of work. If you have questions about the complete solution, please let us know how we can help align this investment with additional needs or changes in scope.

Proposal Summary

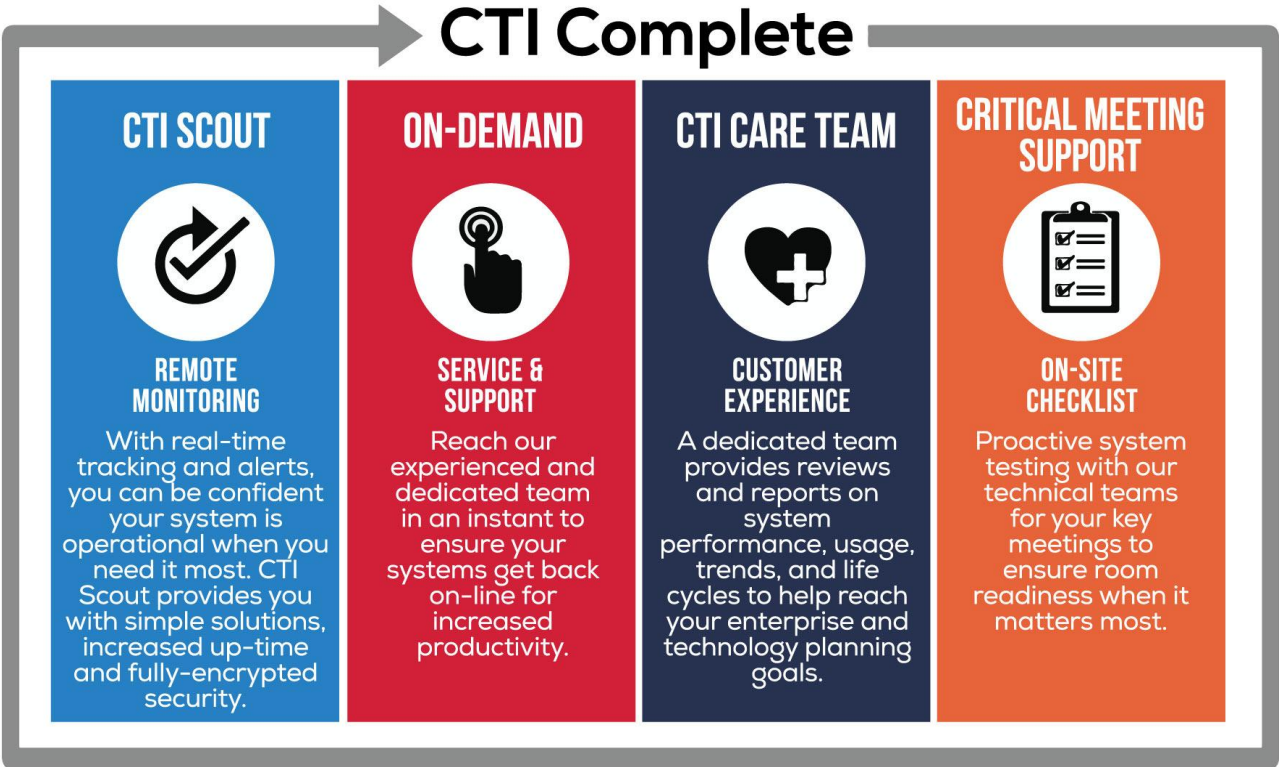
Description	Price
Equipment & Services	\$298,277.81
Tax	\$0.00
Grand Total	\$298,277.81

Down Payment Requirements

Down payment of 60% required to initiate order. 40% Due upon Completion.

Why Us?

Our CTI Complete service is there for you 24/7 through our dedicated CTI Care customer experience team. Through on-site technical service, recommended programming upgrades, and quarterly reliability checks, your system is covered for the unexpected, as well as planned maintenance. Your teams will be trained to operate equipment with confidence. When critical meetings arise, we help ensure system performance with proactive system testing and an on-site checklist, so your systems will be ready when it matters most. Our managed services staff does more than diagnose and repair failures, they help plan for system life cycles.



Bill of Materials

Aledo HS Auditorium Audio Upgrades V3

Manufacturer	P/N	Description	Qty
General: \$174,530.84			
AC Lighting	LI18XR-LED	Littlite 18xr-Led	6
AKG	C562 CM	Small, low-profile mic, for surveillance or recording, XLR connector	1
Allen & Heath	AH-DLIVE-CDM64-RUFX	dLive C Class RackUltra FX MixRack 64x32 I/O, 128 x 64 FPGA, 1 option I/O, ME-1 port, DX Expander Link	1
Allen & Heath	AH-DLIVE-DLC35	dLive C Class C3500 24 fader Surface, Dual 12" touchscreens, 1 option I/O port	1
Allen & Heath	AH-M-SQ-SDANTE64-A	64 X 64 Dante card for SQ / AHM Series, 96kHz / 48kHz	1
Allen & Heath	AH-DX168	16in x 8out Stage Box with dLive 96kHz mic preamps, 96kHz	1
Atlas	AT10	10 Watt Single Gang Stainless Steel 70.7V Commercial Attenuator	4
ClearCom	FL-7	Encore Call Signal Flasher: 1Ch	2
ClearCom	500096Z	GM-9/18 Windscreen	1
ClearCom	GM-9	Gooseneck Microphone: Standard 9" / 230mm, Silver, TRS	1
ClearCom	MS-702	Encore Main Station: 2Ch, Power supply 1.2 Amp, 1RU	1
ClearCom	CC-400-MD4	Headset: Double Ear, Medium Weight, 4 pin Mini DIN-M	2
ClearCom	CC-300-MD4	Headset: Single Ear, Medium Weight, 4 pin Mini DIN-M	14
ClearCom	RM-702	Encore Remote Station: 2Ch, 1RU	2
ClearCom	RS-701	Encore Beltpack: 1Ch	10
ClearCom	KB-701	Encore Speaker Station: 1Ch, Flush Mount	4
Denon	DN-500BDMKII	Media Player Type 2	1
EMG	BTB-EMH4D-12/4-75	Batten Mic Junction Box/Cable Assembly 75'	2
Fulcrum	FH1596	Full-Range Coaxial Horn	2
Fulcrum	Sub218L	Dual 18 inch Direct-Radiating Subwoofer	2
GEFEN	PL-PROC	20A ADVANCED POWER COND/LIGHTS W/SMP & VOLTMETER, 9 OUTLETS, 1RU, 10FT CORD	1

Henry Engineering	USBMB	USB Sound Card	1
JBL	PRX412M	12" two-way stage monitor or front of house passive speaker system; 1200 Watt peak power handling , 126dB Maximum SPL , 8 ohms. DuraFlex -covered 18mm plywood enclosure, 16 gauge cloth-backed steel grille, dual 36 mm pole sockets, non-skid rubber feet. 12 M10 suspension points. Net Weight 17.5kg (38 lbs.)	4
JBL	CONTROL 16C/T	Control 16C/T in White. 2-way Coaxial Ceiling Loudspeaker with blind-mount backcan for quick and easy installation, 6.5" (165mm) high output LF driver with polypropylene cone and 0.75" (19mm) liquid cooled soft-dome Tweeter, 50W Cont. Pink Noise (100W Program) Power Handling (100hr), 62Hz - 20kHz Frequency Range, 110Å° Conical Coverage, 91dB Nominal Sensitivity, 30W 70V/100V multi-tap Transformer with 8? direct, Dual conduit/cable clamp, C-ring support backing plate and Cutout template included, White (Priced as each: sold in pairs) International Master Pack is 2 pcs	10
JBL	305PMKII	S/M, 305PMKII	2
JBL	Control 25-1	Control 25-1 in Black. Professional 5.25" 2-way Ultra-Compact Indoor/Outdoor Background/Foreground Speaker with Rich Sonic Character and Contemporary High-Design look that fits into a wide range of decors, 5.25" (135mm) woven-fiberglass cone LF and 0.75" (19mm) PEI diaphragm Tweeter, 100W Cont. Pink Noise (400W Peak) Power Capacity (2hr), 60Hz - 20kHz Frequency Range, 90dB Sensitivity, 30W 70V/100V multi-tap Transformer with 8? direct, Wide 100Å° x 100Å° coverage, Built-in InvisiBall Mounting Hardware, Black (RAL9004) (Priced as each; sold in pairs)	2
Listen	LA-401	Universal Ear Speaker	8
Listen	LA-430	Intelligent Ear Phone/Neck Loop Lanyard	8
Listen	LS-71-216	Listen iDSP Advanced Level IV Stationary RF System (216 MHz)	1
Listen	LR-5200-216	Advanced Intelligent DSP RF Receiver (216 MHz)	8
MIDDLE ATLANTIC	BGR-4532-AV	45 SPACE, 32"DEEP CONFIG RACK,A/V	1
MIDDLE ATLANTIC	FI-2	FOAM INSERT 2 SPACE	3
MIDDLE ATLANTIC	MPR-SEQA	MPR Sequencing Controller	1
MIDDLE ATLANTIC	FC-4-IEC	FAN CTRL,STANDALONE,IEC	1
MIDDLE ATLANTIC	MPR-JB843A	MPR JBOX 8"X4"X3"	1
Middle Atlantic	J-24X6	Jumper 24 Inches Pre-Terminated	2
MIDDLE ATLANTIC	SSL	1SP LAMINATED SLIDING SHE	2
MIDDLE ATLANTIC	M-20A	4"MPR 20A DUPLEX MODULE	2
Middle Atlantic	MPR-8A	MPR Raceway, 72 Inches, Accepts 8 Modules	1
Middle Atlantic	SSL	1 RU Laminate Sliding Rackshelf	2
MIDDLE ATLANTIC	BL1	1SP FLANGED ALUM ANOD BLA	10
MIDDLE ATLANTIC	DWR-24-26	DWR RACK 24RU 24"USEABLE	1
MIDDLE ATLANTIC	RLM-20A	8"MPR 20A CONTROL MODULE	6

MIDDLE ATLANTIC	UPX-RLNK-1000R-8	1000VA 120V UPS RLNK OUTLET CONTROL	3
MIDDLE ATLANTIC	EB1	1SP FLANGED ECONO BLANK	3
MIDDLE ATLANTIC	DTRK-1418	14SP/18D DSKTP RK,NO DRS	2
Middle Atlantic	T-80X6	Tails 80 Inches Connector On One End	1
MIDDLE ATLANTIC	D2	2SP ANODIZED DRAWER	7
Netgear	GSM4230P-100NAS	M4250-26G4F-POE+ MNGD SWITCH PERP	3
Pro Co	Custom Plate	Microphone - Dual Female XLR 2-Gang Brushed Black Anodized	3
Pro Co	E123-100	100' Electrical Extension Cord with SJTOW rated 12AWG, 3C	1
Pro Co	Custom Plate	Intercom - Dual Male XLR 1-Gang Brushed Black Anodized	5
Pro Co	Custom Plate	Technical Panel - 7 Female XLR & 2 Male XLR & 4 NL4 11"X11" Brushed Black Anodized	2
Pro Co	DURACAT-50NBNB	50' CAT6 EtherCon to EtherCon Cable	1
Pro Co	DURACAT-10NBNB	10' CAT6 EtherCon to EtherCon Cable	1
Pro Co	Wireless Antenna Plate	Antenna Mounting Plate - 3-Gang with Gromet and space for antenna mount	2
Pro Co	Custom Rack Panel	Stage Managers Chime/Paging - 1RU with 3 Momentary buttons and one surface mic	1
Pro Co	E123-50	50' Electrical Extension Cord with SJTOW rated 12AWG, 3C	1
Pro Co	Custom Plate	FloorBox plate - 3 XLR Female & 1 NL4 2-Gang Brushed Black Anodized	5
Pro Co	Custom Rack Panel	FOH Mixer I/O Panel - 1RU with multiple connector inputs/outputs	1
Pro Co	EXM-3	XLR Male to XLR Female Microphone Cable (3')	20
Pro Co	Custom Rack Panel	Stage Managers I/O Panel - 1RU with multiple connector inputs/outputs	1
QSC	CX-Q 4K4	4-Channel 1000W/CH Q-SYS Network Amplifier, Lo-Z, 70V, 100V direct drive, FlexAmp , Mic/line Inputs, 100-240V.	1
QSC	QIO-GP8x8	Q-SYS peripheral providing control expansion with 8 logic inputs and 8 logic outputs. Up to 4 devices daisy-chainable. 1U-1/4W, powered over Ethernet or +24 VDC. Surface mountable, rack kit sold separately.	2
QSC	QIO-LVR4	Q-SYS peripheral providing 4 low-voltage relay ports. Up to 4 devices daisy-chainable. 1U-1/4W, powered over Ethernet or +24 VDC. Surface mountable, rack kit sold separately.	1
QSC	QIO-FLEX4A	Q-SYS peripheral providing 4 FLEX I/O, 4x8 GPIO, 2 amplifier outputs, 1 RS232 port. Up to 4 devices daisy-chainable for networking, up to 2 devices daisy-chainable for DC power. 1U-1/2W, powered over Ethernet or +24 VDC. Surface mountable, rack kit sold separately.	1
QSC	SLDAN-32-P	Q-SYS Software-based Dante 32x32 Channel (16x16 Flows) License, Perpetual.	1

QSC	CX-Q 8K4	4-Channel 2000W/CH Q-SYS Network Amplifier, Lo-Z, 70V, 100V direct drive, FlexAmp , Mic/line Inputs, 100-240V.	2
QSC	CX-Q 2K4	4-Channel 500W/CH Q-SYS Network Amplifier, Lo-Z, 70V, 100V direct drive, FlexAmp , Mic/line Inputs, 100-240V.	1
QSC	CORE 110f-v2	Unified Core with 24 local audio I/O channels, 128x128 total network I/O channels with 8x8 Software-based Dante license included, USB AV bridging, dual LAN ports, POTS and VoIP telephony, no GPIO, 16 next-generation AEC processors, 1RU.	1
RF Venue	DFINB	Diversity Fin Antenna Install Black	2
RF Venue	DISTRO4	DISTRO4 Four (4) Channel Antenna Distribution System	1
Shure	SLXD4D=-G58	Dual-Channel Digital Wireless Receiver	1
Shure	MX153B/O-TQG	Omnidirectional Earset Headworn Microphone, Black	20
Shure	ANI4IN-XLR	4-Input, XLR connectors, Mic/Line Dante Audio Network Interface with PEQ and Audio Summing	5
Shure	SLXD2/B87A=-G58	Handheld Transmitter with Beta 87A Capsule	12
Shure	SLXD1=-G58	Bodypack Transmitter	20
Shure	SRH440A	Professional Studio Headphones	2
Shure	SLXD4Q+=-G57	Wireless Receiver, Quad	5
Shure	SB903	Lithium-Ion Battery for SLX-D	32
Shure	SBC203-US	Dual Docking Station for SLX-D transmitters and SB903 battery	1
Shure	SBC80-903-US	8-BAY BATTERY CHARGER FOR SB903	4
Surgex	SX1120RT	Surge Eliminator & Power Conditioner	2
Tascam	CD-400U	Media Player Type 1	1
Tascam	IF-DA2	DANTE AUDIO OPTION FOR SS-R250N/CDR250N	1
Tascam	SS-CDR250N	Media Recorder Type 1	1
Tascam	RC-SS150	FLASH START REMOTE FOR SS-R250N/CDR250N WITH 12 KEYS	1
TOA	M-633D CU	Rack Mount Digital Mono/Stereo Mixer w/ARC & FBS (1U)	1
Ultimate Support	TS-80B	Original Speaker Stand - Black	2
Whirlwind	SK525G12	Cable - Speaker, NL4 Speakon to NL4 Speakon, 25', 12 AWG, wired 1+ / 1-	4
Whirlwind	SK550G12	Cable - Speaker, NL4 Speakon to NL4 Speakon, 50', 12 AWG, wired 1+ / 1-	4

Standard Disclaimer

CTI provides for twelve (12) months of **CTI Complete** on all system purchases. CTI warrants the system implemented are free from defects in material and workmanship, in accordance with the contract, drawings, specifications, alterations and additions thereto, for a period of twelve (12) months from the date of commencement of use, substantial completion, or date of notice of completion, whichever occurs first. This coverage does not protect against consumables, severe weather, and acts of God.

Terms

Terms are NET 30 with approved credit. For orders that exceed ten thousand dollars; 60% to initiate order, 40% upon completion, or progress billing based on purchase agreement at time of order. Payments made by credit card are subject to a 3.0% fee.

All applicable taxes are the responsibility of the purchaser and will be added to the final invoice. Any cancelled orders or returns are subject to manufacturer acceptance; shipping and restock fees may apply. This proposal is valid for fourteen (14) days.

Taxes and Tariffs

Aledo ISD is responsible for all applicable taxes, including but not limited to sales tax, value-added tax (VAT), and goods and services tax (GST), as well as any import duties, tariffs, and customs fees imposed by the destination location. These charges are not included in the product price or freight and must be paid by Aledo ISD. The Seller will provide all necessary documentation for customs clearance, and both parties agree to comply with all relevant laws and regulations regarding these charges.

Installation Description and Requirements

Provided by CTI: If installation is purchased, CTI will install all A/V components. CTI will also perform all programming, alignments, and end-user training. CTI will provide A/V project management, and provide drawings as required. This installation price is assumed is Monday through Friday 8:00am to 5:00pm install time. Room availability must be within consecutive 8-hour blocks. Any required changes or rushes may affect the final price.

Provided by Others

Electrical requirements are to be provided by others unless specifically included in CTI Scope of Work.

Statement

This system proposal is the property of CTI and is delivered with the sole intent of being viewed by the management of Aledo ISD for evaluation purposes only. This proposal or any part of this proposal is not to be presented to, or viewed by any other party, vendor, or CTI competitor without the written consent of CTI. Any effort to do so will be considered a violation of copyright law.

Next Steps

1. Upon Notice to Proceed, CTI will begin executing the project plan with an internal handoff of the project to our operations team.
2. If you have questions about the process as we move forward, please contact me at chris.chandler@cti.com or 214-315-6515.
3. You will be contacted by a CTI Project Manager to schedule a project kickoff meeting to review the project scope and schedule.

Total
J25220020 - \$298,277.81

Customer Signature

CTI Signature

Printed Name

Printed Name

Title

Title

Date

Date