

DATE: August 11, 2025

TITLE: Technology Services

TYPE: Information

PRESENTER: Amy Thuesen, Director of Technology

BACKGROUND:

Technology Services designs, implements, and supports the technology infrastructure and resources in this district. This includes network and communications, hardware and software, and technology training and integration.

Technology Advisory Team

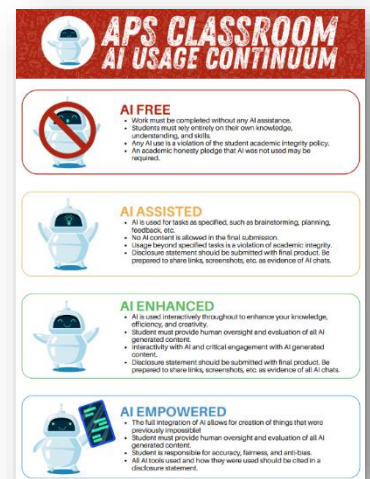
- This team will resume meetings in September 2025.

Support and resources to ensure a safe and welcoming learning environment

- As new and veteran teachers are coming back for the new year, the Tech Services team is delivering a variety of supports and professional development to get them off to a good start.
 - Instructional Tech Support for new teachers – we spent two hours with new teachers and instructional coaches on Thursday, August 7, to make sure our new staff have time to learn about the use of Infinite Campus, Microsoft 365, SeeSaw, Schoology, and other curricular tech.
 - Classroom/Office Tech Support – we got out to all buildings during the week of August 4-8 to do get classroom tech reconnected after building cleaning. We also will touch base with each staff member in person during the week of August 11-15 to ensure that they are ready for their first day.
 - Support Documents – Each building receives a tech support one-pager to keep close by so that they have quick access to tech assistance resources.

District-wide MTSS & Packer Profile

- As we look towards supporting staff in these areas during 25-26, our focus is going to be on helping them use tech to save time. School staff have a lot on their plates and tech can be a great tool for reducing monotonous tasks.
 - Generative AI – Last spring the district launched a Generative AI website to offer staff guidance as they explore this new tool. Each Grade 5-12 classroom teacher will be offered a poster to hang in their classroom to help with setting expectations around use of AI in the classroom. We will also be sharing tools with teachers that can help them speed up some of their planning tasks.
 - Formative Assessments – Teachers can use some of the assessment tools in Schoology, Seesaw, and Microsoft to get a quick glance of what their students have learned without it taking a lot of grading time.
 - Microsoft Teams – Building and district committees and Teams can streamline their communication and



collaboration through the use of Microsoft Teams, online meetings, and shared files and planners.

- Software Integrations – Many of our technologies work together, and we will be supporting Info Services and Teaching and Learning as staff learn how to leverage EduClimber and Renaissance tools to easily view and evaluate learning and behavior data.
- A goal of our Technology Plan is to improve communication among the school and family regarding student technology, so in July we sent out grade-level specific information to families in Portal Pushes and the Packer Bulletin. This messaging included information on:
 - School devices – in class vs. take home
 - Approved software and student data privacy
 - Internet access and filtering at school and at home
 - Expectations for technology use and care

Excellence in Resource Management

- All staff and student devices are prepped for the new year.
 - Certified staff at IJ Holton, Riverland, and in the Special Services department get new laptops this year, along with Grades 5 & 9.
 - Two computer labs got a full refresh this summer – the AHS Photo Lab and the AHS Career Center. One third of the district staff desktops also were replaced.
 - All student laptops and district desktops not replaced were reimaged and made ready for returning users.
 - All K-4 classrooms are getting new iPads.
- As we go through rooms to prepare for the new year, we are thinking about how to better track classroom technology as classrooms and offices are adjusted during the summer to meet new needs. Improving this process for next fall will be a focus this year.
- District technicians were able to repair or replace all of the damaged laptops from the 24-25 school year, with only a few unique exceptions. This means that parts supply chains are getting back to normal.