



Collin College

2017 Capital Improvement Program
Monthly Report
December 2019

Collin County Community College District

Project Reference: 60541060
Project Number: 60541060

January 07, 2020

Quality information

Prepared by



Nuria Cortes
Program Documents Manager

Checked by



Nick Fiehler
Program Controls Manager

Approved By



Adrian Grimes
Program Director

Revision History

Revision	Revision date	Details	Authorized	Name	Position
First Publication	January 07, 2020	December '19 Report	Yes	Adrian Grimes	Program Director

Distribution List

# Hard Copies	PDF Required	Association / Company Name
	1	Dr. Neil Matkin / Collin College
	1	Jason Parry / Collin College

Prepared for:

Collin County Community College District
3452 Spur 399
Suite 327
McKinney, TX 75069

Prepared by:

Nuria Cortes
Program Documents Manager
E: ncortes.aecom@collin.edu

AECOM
13355 Noel Road
4th Floor
Dallas TX, 75240
aecom.com

Copyright © 2019 by AECOM

All rights reserved. No part of this copyrighted work may be reproduced, distributed, or transmitted in any form or by any means without the prior written permission of AECOM.

Table of Contents

1.	Introduction.....	5
2.	Executive Summary	5
3.	Scope.....	6
3.1	Phase 1	6
3.2	Phase 2	6
3.3	Phase 3	7
4.	Community	7
4.1	Project Teams	7
4.1.1	Phase 1	7
4.1.2	Phase 2	7
4.1.3	Phase 3	8
4.2	Current Personnel Estimate.....	9
4.3	Community Outreach.....	9
5.	Schedule	10
5.1	Program.....	10
5.2	Phase 1	10
5.3	Phase 2	11
5.4	Phase 3	12
6.	Budget.....	13
6.1	Program Summary	13
6.2	Phase 1	13
6.3	Phase 2	14
6.4	Phase 3	15
6.5	Phase A	16
6.6	Additional Program Budgets	17
7.	Completed Items.....	17
7.1	General Program.....	17
7.2	Procurement	17
7.3	Design	17
7.4	Pre-Construction	17
7.5	Construction.....	17
7.6	Acceptance and Close-Out.....	18
8.	Pending Items.....	18
8.1	General Program.....	18
8.2	Procurement	18
8.3	Design	18
8.4	Pre-Construction	18
8.5	Construction.....	18
8.6	Acceptance and Close-Out.....	18
	Appendix A – Construction Progress Photos	19

1. Introduction

On May 6, 2017, voters approved Collin College's \$600 million bond proposal to facilitate a long-range plan to accommodate the projected population growth in Collin County over the next two decades. The program consists of 4 new campuses and 2 new facilities.

On May 16, 2017, in a special session, the Board of Trustees granted the District President authority to enter and negotiate into contract with AECOM Technical Services, Inc. (AECOM) to provide Program Management Services to the Collin College 2017 Capital Improvement Program. On May 25, 2017, Collin College issued a Notice to Proceed to AECOM. As part of these services, AECOM will deliver a monthly report to provide status and progress of key aspects of the Program.

2. Executive Summary

The Program is progressing as planned with no major issues to report at this time.

Completed and Pending Items

- Drywall and MEP installations are on-going in the Academic Building and Trade Bar B. Stair installations are on-going in the Academic Building. Wall layout and metal stud installation is complete in Trade Bar B and Trade Bar C, and on-going in Trade Bar D. Roof work on Trade Bar D is complete. Site electrical and gas tie-ins are nearing completion. Parking lot paving is on-going. Curtainwall, polycarbonate and swiss pearl exterior panel installation is on-going.
- MEP tie-in, drywall, glazing, millwork and masonry work is on-going in the buildings. Brown Street widening, intersection signalization, and bridge construction at the ephemeral stream is on-going at the Wylie Campus.
- 100% Construction Documents for the IT Center were received on December 9th
- JE Dunn Construction GMP #1 for the IT Center was executed on December 13th

Items of close attention

- Construction schedules are being closely monitored to ensure completion of the Phase 1 projects by Fall 2020

Budget Summary

- \$409,635,279 of the \$600,000,000 has been committed to-date in the form of contracts with various vendors. This represents 68.27% of the overall program budget committed.
- \$277,922,498 of the \$409,635,279 committed amount has been expended to-date. This represents 67.85% of the commitments to date and 46.32% of the program budget.

3. Scope

3.1 Phase 1

- Wylie Campus
 - Construction of a campus on a new approximately 97-acre site
 - The campus is planned to include:
 - Campus Commons
 - Learning Resource Center / Library
 - Student Center
 - Central Utility Plant
- Technical Campus
 - Construction of a Technical Campus on a new 32-acre site in Allen, Texas
 - The campus is planned to include:
 - 500 space underground parking garage
 - Academic Building (includes space for dual credit students)
 - 3 Trade Bar Buildings to support CTE programs
 - Programs planned for inclusion include:
 - Advanced Manufacturing, Automotive, Construction, and Health Science

3.2 Phase 2

- Celina Campus
 - Construction of a campus on a new approximately 75-acre site
 - The campus is planned to include:
 - Student Union / Workforce / Instructional Building
- Farmersville Campus
 - Construction of a campus on a new approximately 76-acre site
 - The campus is planned to include:
 - Student Union / Workforce / Instructional Building
- Frisco Campus
 - Construction of a new facility on an existing campus
 - The campus is planned to include:
 - IT Center

3.3 Phase 3

- Frisco Campus
 - Project scope is being reevaluated.
- McKinney Campus
 - Construction of a new Welcome Center on the existing campus

4. Community

4.1 Project Teams

4.1.1 Phase 1

- Wylie Campus
 - Program Manager: AECOM Technical Services, Inc. (under contract)
 - A/E: Page Southerland Page, Inc. (under contract)
 - MEP: Reed, Wells, Benson & Co.
 - Civil Engineer: Pacheco Koch Consulting Engineers, Inc.
 - Cost Consulting: Vermeulens
 - Construction Manager-at-Risk: Skanska USA Building, Inc. (under contract)
 - Commissioning Agent: Bath Group, Inc. (under contract)
- Technical Campus
 - Program Manager: AECOM Technical Services, Inc. (under contract)
 - A/E: Perkins+Will, Inc. (under contract)
 - Associate Architect: Hoefer Wysocki Architecture
 - MEP: Purdy McGuire
 - Civil Engineer: Pacheco Koch Consulting Engineers, Inc.
 - Structural Engineer: L.A. Fuess Partners, Inc.
 - Cost Consulting: Vermeulens
 - Construction Manager-at-Risk: McCarthy Building Companies, Inc. (under contract)
 - Commissioning Agent: Farnsworth (under contract)

4.1.2 Phase 2

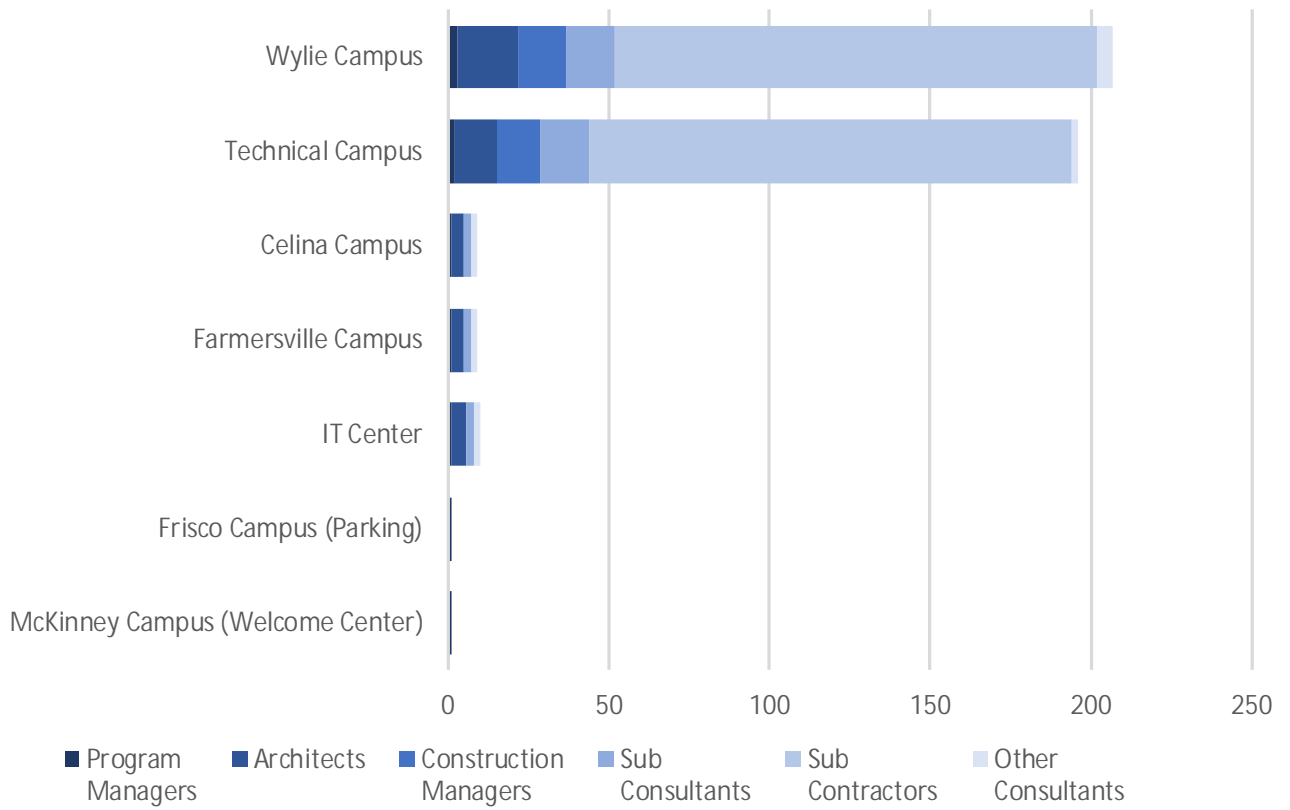
- Celina Campus
 - Program Manager: AECOM (under contract)
 - A/E: Beck Architecture, LLC (under contract)
 - Structural Engineer: L.A. Fuess Partners, Inc.
 - MEP: Reed, Wells, Benson & Co.
 - Civil Engineer: RLK Engineering

- Construction Manager-at-Risk: JT Vaughn Construction (under contract)
- Farmersville Campus
 - Program Manager: AECOM (under contract)
 - A/E: Beck Architecture, LLC (under contract)
 - Structural Engineer: L.A. Fuess Partners, Inc.
 - MEP: Reed, Wells, Benson & Co.
 - Civil Engineer: RLK Engineering
 - Construction Manager-at-Risk: JT Vaughn Construction (under contract)
- IT Center
 - Program Manager: AECOM (under contract)
 - A/E: Beck Architecture, LLC (under contract)
 - Structural Engineer: L.A. Fuess Partners, Inc.
 - MEP: ME Engineers
 - Civil Engineer: RLK Engineering
 - Construction Manager-at-Risk: JE Dunn Construction (under contract)

4.1.3 Phase 3

- Welcome Center at the McKinney Campus
 - Program Manager: AECOM Technical Service, Inc. (under contract)
- Frisco Campus
 - Program Manager: AECOM Technical Service, Inc. (under contract)

4.2 Current Personnel Estimate



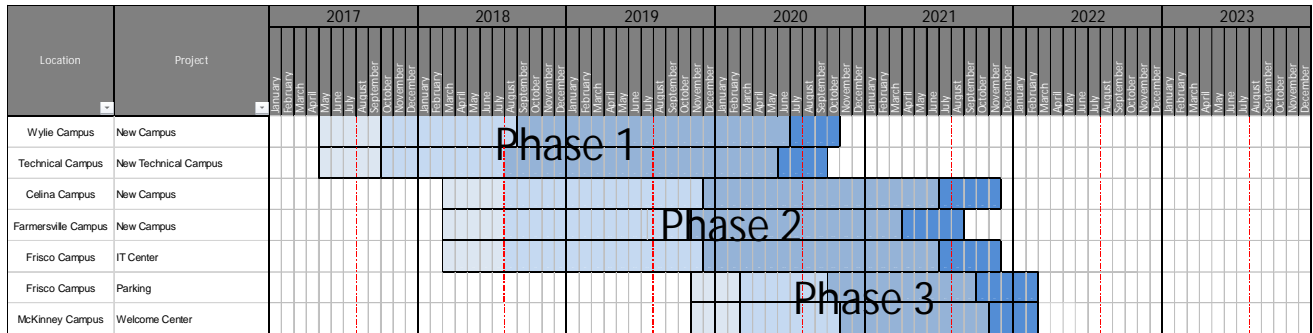
It is estimated that the Program Managers, Architects, Construction Managers, Sub-Consultants, and Sub-Contractors, under contract with Collin College for the 2017 Capital Improvement Program, have 430 employees contributing to the program's progress.

4.3 Community Outreach

- Collin College 2017 Capital Improvement Program Website
 - o <https://CollinCollege2017CIP.com>
 - o Includes the following features:
 - Program Overview
 - Project Scopes
 - Project Schedules
 - Project Budgets
 - Progress Photos/Renderings
 - Live On-Site Camera Feeds

5. Schedule

5.1 Program



Planning & Team Selection
Programming & Design
Construction
Final Completion & Close-Out

5.2 Phase 1

Wylie Campus

Activity	Baseline Finish	Planned Finish		Actual Finish	
BOT Approval of Program Manager	May 16, 2017	May 16, 2017	👍	May 16, 2017	👍
BOT Approval of A/E Procurement Method	May 23, 2017	May 23, 2017	👍	May 23, 2017	👍
BOT Approval of Construction Delivery Method	May 23, 2017	May 23, 2017	👍	May 23, 2017	👍
BOT Approval of Recommended Firms	August 22, 2017	August 22, 2017	👍	August 22, 2017	👍
Architect Mobilized	September 12, 2017	September 29, 2017	👎	September 28, 2017	👍
GMP Construction Documents Submittal	June 26, 2018	June 26, 2018	👍	June 26, 2018	👍
BOT Approval of GMP	August 28, 2018	August 28, 2018	👍	August 28, 2018	👍
Contractor Mobilized	September 10, 2018	September 12, 2018	👎	September 12, 2018	👍
Foundations Complete	May 18, 2019	April 30, 2019	👍	April 23, 2019	👍
Structures Complete	June 28, 2019	June 28, 2019	👍	May 23, 2019	👍
Dry-In of Buildings Complete	October 26, 2019	October 26, 2019	👍	October 29, 2019	👍
Permanent Power Complete	September 17, 2019	September 17, 2019	👍	September 21, 2019	👍
Interior Finish-Out Complete	May 1, 2020	May 1, 2020	👍	-	
Substantial Completion	June 25, 2020	June 25, 2020	👍	-	
Final Completion	August 23, 2020	August 23, 2020	👍	-	
Student Occupancy	August 2020	August 2020	👍	-	

Technical Campus

Activity	Baseline Finish	Planned Finish		Actual Finish	
BOT Approval of Program Manager	May 16, 2017	May 16, 2017	↑	May 16, 2017	✓
BOT Approval of A/E Procurement Method	May 23, 2017	May 23, 2017	↑	May 23, 2017	✓
BOT Approval of Construction Delivery Method	May 23, 2017	May 23, 2017	↑	May 23, 2017	✓
BOT Approval of Recommended Firms	August 22, 2017	August 22, 2017	↑	August 22, 2017	✓
Architect Mobilized	September 12, 2017	September 29, 2017	↓	September 28, 2017	✓
GMP Construction Documents Submittal	April 16, 2018	April 16, 2018	↑	April 19, 2018	✓
BOT Approval of GMP	June 26, 2018	June 26, 2018	↑	June 26, 2018	✓
Contractor Mobilized	July 6, 2018	July 20, 2018	👉	July 26, 2018	✓
Foundations Complete	September 23, 2019	September 23, 2019	↑	July 29, 2019	✓
Structures Complete	November 18, 2019	November 18, 2019	↑	November 13, 2019	✓
Roofing of Buildings Complete	December 20, 2019	December 20, 2019	↑	December 20, 2019	✓
Permanent Power Complete	December 15, 2019	January 10, 2020	↓	-	
Interior Finish-Out Complete	May 8, 2020	May 8, 2020	↑	-	
Substantial Completion	June 11, 2020	June 11, 2020	↑	-	
Final Completion	July 7, 2020	July 7, 2020	↑	-	
Student Occupancy	August 2020	August 2020	↑	-	

5.3 Phase 2

Celina Campus

Activity	Baseline Finish	Planned Finish		Actual Finish	
BOT Approval of Program Manager	September 25, 2018	February 14, 2018	↑	February 14, 2018	✓
BOT Approval of A/E Procurement Method	September 25, 2018	March 27, 2018	↑	March 27, 2018	✓
BOT Approval of Construction Delivery Method	September 25, 2018	March 27, 2018	↑	March 27, 2018	✓
BOT Approval of Recommended A/E Firm	June 26, 2018	June 26, 2018	↑	June 26, 2018	✓
BOT Approval of Recommended CM Firm	August 2018	August 2018	↑	August 28, 2018	✓
Architect Mobilized	July 24, 2018	July 24, 2018	↑	July 31, 2018	✓
Schematic Design Submittal	January 8, 2019	January 15, 2019	👉	January 16, 2019	✓
Design Development Submittal	April 30, 2019	April 30, 2019	↑	April 26, 2019	✓
Construction Document Submittal	September 20, 2019	September 20, 2019	↑	September 3, 2019	✓
Contractor Mobilized	December 2019	December 2019	↑	November 23, 2019	✓
Student Occupancy	August 2021	August 2021	↑	-	

Farmersville Campus

Activity	Baseline Finish	Planned Finish		Actual Finish	
BOT Approval of Program Manager	September 25, 2018	February 14, 2018	↑	February 14, 2018	✓
BOT Approval of A/E Procurement Method	September 25, 2018	March 27, 2018	↑	March 27, 2018	✓
BOT Approval of Construction Delivery Method	September 25, 2018	March 27, 2018	↑	March 27, 2018	✓
BOT Approval of Recommended A/E Firm	June 26, 2018	June 26, 2018	↑	June 26, 2018	✓
BOT Approval of Recommended CM Firm	August 2018	August 2018	↑	August 28, 2018	✓
Architect Mobilized	July 24, 2018	July 24, 2018	↑	July 31, 2018	✓
Schematic Design Submittal	December 20, 2018	December 18, 2018	↑	December 18, 2018	✓
Design Development Submittal	April 2, 2019	April 19, 2019	↓	April 26, 2019	✓
Construction Document Submittal	July 25, 2019	August 9, 2019	↓	August 9, 2019	✓
Contractor Mobilized	November 2019	November 2019	↑	October 25, 2019	✓
Student Occupancy	August 2021	August 2021	↑	-	

IT Center

Activity	Baseline Finish	Planned Finish		Actual Finish	
BOT Approval of Program Manager	September 25, 2018	February 14, 2018		February 14, 2018	
BOT Approval of A/E Procurement Method	September 25, 2018	March 27, 2018		March 27, 2018	
BOT Approval of Construction Delivery Method	September 25, 2018	March 27, 2018		March 27, 2018	
BOT Approval of Recommended A/E Firm	June 26, 2018	June 26, 2018		June 26, 2018	
BOT Approval of Recommended CM Firm	August 2018	August 2018		August 28, 2018	
Architect Mobilized	July 24, 2018	July 24, 2018		July 31, 2018	
Schematic Design Submittal	May 24, 2019	May 24, 2019		May 24, 2019	
Design Development Submittal	August 23, 2019	August 23, 2019		August 23, 2019	
Construction Document Submittal	December 9, 2019	December 9, 2019		December 9, 2019	
Contractor Mobilized	December 2019	January 6, 2020		-	
Student Occupancy	August 2021	August 2021		-	

5.4 Phase 3

Frisco Campus (Parking)

Activity	Baseline Finish	Planned Finish		Actual Finish	
BOT Approval of Program Manager	August 27, 2019	August 27, 2019		August 27, 2019	
BOT Approval of A/E Procurement Method	October 22, 2019	October 22, 2019		October 22, 2019	
BOT Approval of Construction Delivery Method	February 2020	February 2020		October 22, 2019	
BOT Approval of Recommended A/E Firm	TBD	TBD		-	
BOT Approval of Recommended CM Firm	TBD	TBD		-	
Completion	Summer 2021	Summer 2021		-	

McKinney Campus (Welcome Center)

Activity	Baseline Finish	Planned Finish		Actual Finish	
BOT Approval of Program Manager	August 27, 2019	August 27, 2019		August 27, 2019	
BOT Approval of A/E Procurement Method	October 22, 2019	October 22, 2019		October 22, 2019	
BOT Approval of Construction Delivery Method	February 2020	February 2020		October 22, 2019	
BOT Approval of Recommended A/E Firm	TBD	TBD		-	
BOT Approval of Recommended CM Firm	TBD	TBD		-	
Student Occupancy	August 2021	August 2021		-	

6. Budget

6.1 Program Summary

Program Wide Budget Summary

Budget Group	Original Budget	Current Budget	Commitments	Expenditures	% of Budget Committed	% of Commitment Expended
Management, Design, & Pre-Construction	\$47,186,090	\$42,361,439	\$39,878,895	\$30,206,228	94%	76%
Investigation, Testing & Verification	\$8,108,609	\$7,036,046	\$4,615,664	\$2,019,590	66%	44%
Construction, Equipment & Furnishings	\$483,037,325	\$499,143,223	\$365,034,787	\$245,590,746	73%	67%
Misc.	\$380,733	\$470,873	\$105,934	\$105,934	22%	100%
Contingency	\$61,287,243	\$50,988,419	\$0	\$0	0%	0%
Total Program Budget	\$600,000,000	\$600,000,000	\$409,635,279	\$277,922,498		
% of Total Program Budget Committed	68.27%					
% of Total Commitments Expended	67.85%					

6.2 Phase 1

Wylie Campus

Budget Group	Original Budget	Current Budget	Commitments	Expenditures	% of Budget Committed	% of Commitment Expended
Management, Design, & Pre-Construction	\$15,051,440	\$13,496,138	\$13,496,138	\$11,512,113	100%	85%
Investigation, Testing & Verification	\$2,679,247	\$2,249,663	\$1,747,081	\$1,154,539	78%	66%
Construction, Equipment & Furnishings	\$133,174,284	\$149,799,702	\$142,091,399	\$104,377,295	95%	73%
Misc.	\$126,082	\$174,098	\$57,427	\$57,427	33%	100%
Contingency	\$6,571,649	\$365,189	\$0	\$0	0%	0%
Total Project Budget	\$157,602,702	\$166,084,789	\$157,392,044	\$117,101,373		
% of Total Project Budget Committed	94.77%					
% of Total Commitments Expended	74.40%					
% of Total Project Budget Expended	70.51%					

Technical Campus

Budget Group	Original Budget	Current Budget	Commitments	Expenditures	% of Budget Committed	% of Commitment Expended
Management, Design, & Pre-Construction	\$14,713,206	\$13,792,895	\$13,730,421	\$11,615,574	100%	85%
Investigation, Testing & Verification	\$2,619,039	\$1,914,947	\$1,633,265	\$686,396	85%	42%
* Construction, Equipment & Furnishings	\$130,181,602	\$160,106,800	\$153,560,086	\$102,528,680	96%	67%
Misc.	\$123,249	\$142,545	\$23,317	\$23,317	16%	100%
Contingency	\$6,423,972	\$1,165,621	\$0	\$0	0%	0%
Allen ISD Reimbursement	-	(\$12,000,000)	(\$12,000,000)	-		
Allen EDC Grant	-	(\$400,000)	(\$400,000)	-		
Total Project Budget	\$154,061,068	\$164,722,807	\$156,547,089	\$114,853,967		
% of Total Project Budget Committed	95.04%					
% of Total Commitments Expended	73.37%					
% of Total Project Budget Expended	69.73%					

* Actual Budget from bond funds is \$147,706,800 (\$160,106,800 less \$12,000,000 Allen ISD Reimbursement and \$400,000 Allen EDC Grant)

6.3 Phase 2

Celina Campus

Budget Group	Original Budget	Current Budget	Commitments	Expenditures	% of Budget Committed	% of Commitment Expended
Management, Design, & Pre-Construction	\$5,078,807	\$3,943,814	\$3,908,519	\$2,452,067	99%	63%
Investigation, Testing & Verification	\$936,908	\$936,908	\$485,623	\$75,984	52%	16%
Construction, Equipment & Furnishings	\$46,569,862	\$46,707,730	\$137,868	\$137,868	0%	100%
Misc.	\$44,090	\$58,654	\$15,686	\$15,686	27%	100%
Contingency	\$2,482,596	\$3,465,157	\$0	\$0	0%	0%
Total Project Budget	\$55,112,263	\$55,112,263	\$4,547,695	\$2,681,604		
% of Total Project Budget Committed	8.25%					
% of Total Commitments Expended	58.97%					
% of Total Project Budget Expended	4.87%					

Farmersville Campus

Budget Group	Original Budget	Current Budget	Commitments	Expenditures	% of Budget Committed	% of Commitment Expended
Management, Design, & Pre-Construction	\$2,539,404	\$2,171,819	\$2,156,159	\$1,473,107	99%	68%
Investigation, Testing & Verification	\$468,453	\$529,567	\$436,795	\$60,912	82%	14%
Construction, Equipment & Furnishings	\$23,284,932	\$25,175,225	\$22,657,392	\$918,523	90%	4%
Misc.	\$22,045	\$25,262	\$4,457	\$4,457	18%	100%
Contingency	\$1,241,298	\$604,260	\$0	\$0	0%	0%
Total Project Budget	\$27,556,132	\$28,506,132	\$25,254,802	\$2,456,999		
% of Total Project Budget Committed	88.59%					
% of Total Commitments Expended	9.73%					
% of Total Project Budget Expended	8.62%					

IT Center

Budget Group	Original Budget	Current Budget	Commitments	Expenditures	% of Budget Committed	% of Commitment Expended
Management, Design, & Pre-Construction	\$5,472,853	\$4,256,394	\$4,217,659	\$2,621,867	99%	62%
Investigation, Testing & Verification	\$1,009,600	\$1,009,600	\$296,745	\$39,160	29%	13%
Construction, Equipment & Furnishings	\$50,183,042	\$50,192,142	\$6,082,490	\$9,100	12%	0%
Misc.	\$47,510	\$52,557	\$5,047	\$5,047	10%	100%
Contingency	\$2,675,210	\$3,877,523	\$0	\$0	0%	0%
Total Project Budget	\$59,388,215	\$59,388,215	\$10,601,941	\$2,675,174		
% of Total Project Budget Committed	17.85%					
% of Total Commitments Expended	25.23%					
% of Total Project Budget Expended	4.50%					

6.4 Phase 3

Frisco Campus (Parking)

Budget Group	Original Budget	Current Budget	Commitments	Expenditures	% of Budget Committed	% of Commitment Expended
Management, Design, & Pre-Construction	\$1,586,143	\$1,586,143	\$600,000	\$60,000	38%	10%
Investigation, Testing & Verification	\$137,176	\$137,176	\$16,155	\$2,600	12%	16%
Construction, Equipment & Furnishings	\$12,955,509	\$12,955,509	\$0	\$0	0%	0%
Misc.	\$6,096	\$6,096	\$0	\$0	0%	0%
Contingency	\$1,156,851	\$1,156,851	\$0	\$0	0%	0%
Total Project Budget	\$15,841,775	\$15,841,775	\$616,155	\$62,600		
% of Total Project Budget Committed	3.89%					
% of Total Commitments Expended	10.16%					
% of Total Project Budget Expended	0.40%					

*** Project scope is being reevaluated.**

McKinney Campus (Welcome Center)

Budget Group	Original Budget	Current Budget	Commitments	Expenditures	% of Budget Committed	% of Commitment Expended
Management, Design, & Pre-Construction	\$2,744,237	\$2,744,237	\$1,400,000	\$120,000	51%	9%
Investigation, Testing & Verification	\$258,186	\$258,186	\$0	\$0	0%	0%
Construction, Equipment & Furnishings	\$13,700,563	\$13,700,563	\$0	\$0	0%	0%
Misc.	\$11,661	\$11,661	\$0	\$0	0%	0%
Contingency	\$1,342,573	\$1,342,573	\$0	\$0	0%	0%
Total Project Budget	\$18,057,220	\$18,057,220	\$1,400,000	\$120,000		
% of Total Project Budget Committed	7.75%					
% of Total Commitments Expended	8.57%					

6.5 Phase A

Public Safety Training Center

Budget Group	Current Budget	Commitments	Expenditures	% of Budget Committed	% of Commitment Expended
Construction Costs	\$31,068,022	\$31,068,022	\$31,068,022	100%	100%
Total Project Budget	\$31,068,022	\$31,068,022	\$31,068,022		

Trane Energy PACT

Budget Group	Original Budget	Current Budget	Commitments	Expenditures	% of Budget Committed	% of Commitment Expended
Frisco Campus	\$9,725,336	\$9,725,336	\$9,725,336	\$2,162,504	100%	22%
Plano Campus	\$6,797,834	\$6,797,834	\$6,797,834	\$2,472,184	100%	36%
McKinney Campus	\$4,044,983	\$4,044,983	\$4,044,983	\$1,470,363	100%	36%
Courtyard Center	\$548,720	\$548,720	\$548,720	\$185,012	100%	34%
Collin Higher Education Center	\$720,659	\$720,659	\$720,659	\$261,196	100%	36%
Total Program Budget	\$21,837,531	\$21,837,531	\$21,837,531	\$6,551,259		
% of Total Project Budget Committed	100.00%					
% of Total Commitments Expended	30.00%					

6.6 Additional Program Budgets

Program Level

Budget Group	Original Budget	Current Budget	Commitments	Expenditures	% of Budget Committed	% of Commitment Expended
Building Fund Reimbursement	\$51,150,000	\$0	\$0	\$0	0%	0%
Program Wide Traffic Study	\$0	\$370,000	\$370,000	\$351,500	100%	95%
Program Contingency	\$39,393,094	\$39,011,246	\$0	\$0	0%	0%
Total Project Budget	\$90,543,094	\$39,381,246	\$370,000	\$351,500		

7. Completed Items

7.1 General Program

- AECOM issued the Monthly Program Report for November '19 to Collin College on December 6th
- AECOM conducted coordination meetings with the Executive Committee on December 2nd and 16th
- Farmersville Campus Groundbreaking Event was held on December 6th

7.2 Procurement

- Collin College and AECOM conducted a Program Procurement Update Meeting on December 10th
- Collin College held the Phase 3 CMAR Pre-Proposal Meeting on December 3rd
- JE Dunn Construction GMP #1 for the IT Center was executed on December 13th

7.3 Design

- No Design Items have been completed during this time

7.4 Pre-Construction

- No Pre-Construction Items have been completed during this time

7.5 Construction

- Collin College, AECOM, Perkins+Will, Inc. and McCarthy Building Companies, Inc. conducted Weekly OAC meetings on December 4th, 11th, and 18th for the Technical Campus
- Collin College, AECOM, Page Southerland Page, Inc. and Skanska USA Building, Inc. conducted Bi-Weekly OAC meetings on December 12th for the Wylie Campus
- Collin College, AECOM, Page Southerland Page, Inc., Skanska USA Building, Inc. and Bath Commissioning conducted Weekly MEP/Commissioning meetings on December 4th, 11th, and 18th for the Wylie Campus
- Collin College, AECOM, Beck Architecture, LLC, and JT Vaughn Construction conducted Weekly OAC meetings on December 4th, 11th, and 18th for the Celina Campus
- Collin College, AECOM, Beck Architecture, LLC, and JT Vaughn Construction conducted Weekly OAC meetings on December 5th, 12th, and 19th for the Farmersville Campus
- McCarthy Building Companies, Inc. held a Welding Booth Review meeting with AECOM, Perkins+Will, Inc., Hoefer Wysocki, Purdy-McGuire, and Lincoln Representatives for the Technical Campus on December 4th

- [AECOM and Collin College met to discuss the Data Drop Review for the Technical Campus on December 10th](#)
[See Appendix A for Construction Progress Photos](#)

7.6 Acceptance and Close-Out

- No Acceptance and Close-Out Phase Items have been completed at this time

8. Pending Items

8.1 General Program

- No General Program items are pending at this time

8.2 Procurement

- [IT Center construction phase commissioning services](#)
- [IT Center construction phase building envelope services](#)
- [IT Center construction materials testing services](#)

8.3 Design

- [Cost sharing agreement with Hillwood Development for co-shared infrastructure at Celina Campus](#)
- [Revised easement locations at Celina Campus due to changes in new roadway alignment](#)

8.4 Pre-Construction

- [Coordination with the City of Celina, City of Farmersville, and City of Frisco on the permitting/zoning requirements for the Celina Campus, Farmersville Campus, and IT Center](#)

8.5 Construction

- [Building envelope, MEP installation, sitework, and interior and exterior finish work at the Technical Campus](#)
- [Exterior building envelope and interior finish work at the Wylie Campus](#)

[See Appendix A for Construction Progress Photos](#)

8.6 Acceptance and Close-Out

- No Acceptance and Close-Out activities are underway at this time

Appendix A – Construction Progress Photos

Technical Campus



December '19 Aerial



South Garage Entry



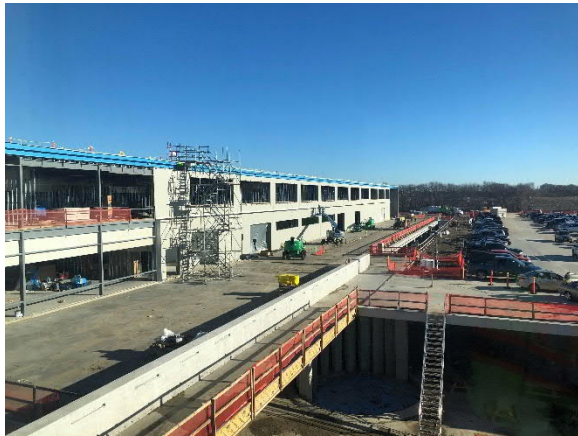
Swiss Pearl Installed on South Truss at Academic Building



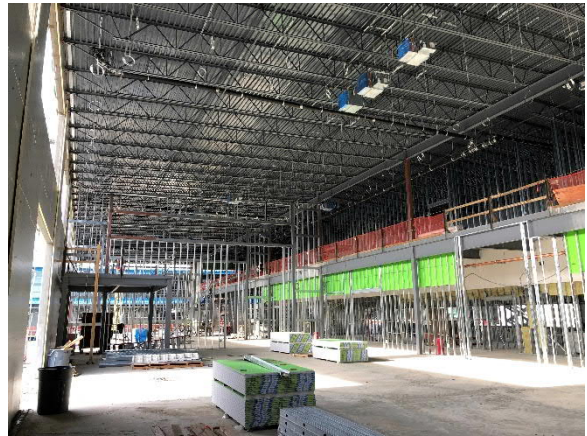
Polycarbonate Install on South Side of Trade Bar B



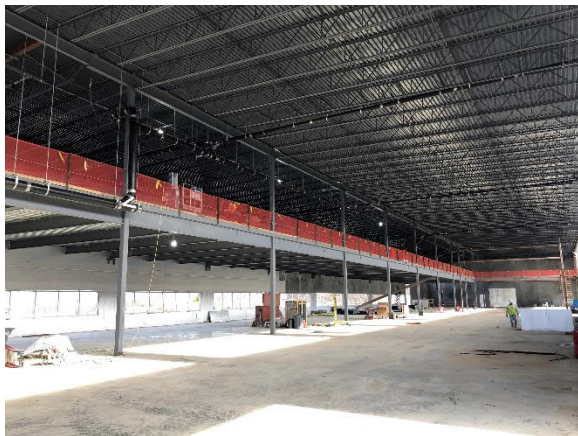
West Elevation Looking South from North Overhang of Academic Building



Southeast View of Building B



Shared Building Lab at Building C



Lift Bay at Building D

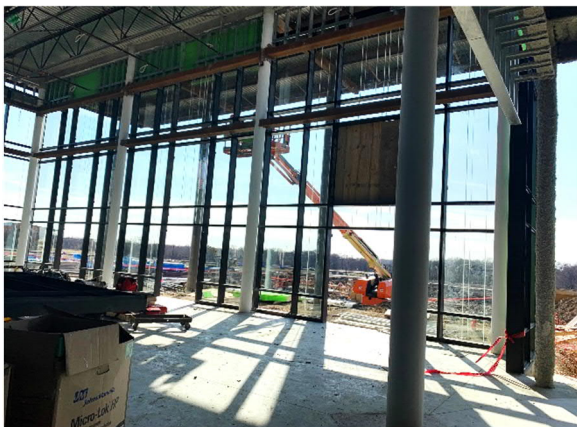


Paved Parking Lot on South Side of Campus

Wylie Campus



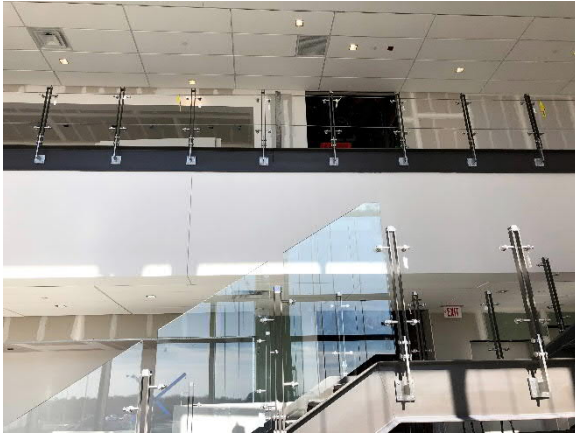
December '19 Aerial



Conference Center Curtain Wall



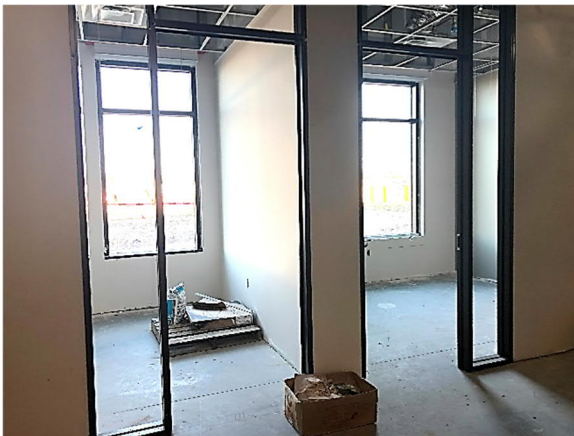
South View of Conference Center



Glass Handrail Install at Library Lobby



Light Installation at Library



Police Office Space at Campus Commons



Restroom Tile Installed at Campus Commons



Kitchen at Student Center



Retaining Wall Outside of Conference Center