

Bilingual/ESL Annual Report

SEPTEMBER 22, 2020

TERESA LUNA-TAYLOR
DIRECTOR OF BE/ESL PROGRAMS



GOALS

II. Teaching and Learning. . .

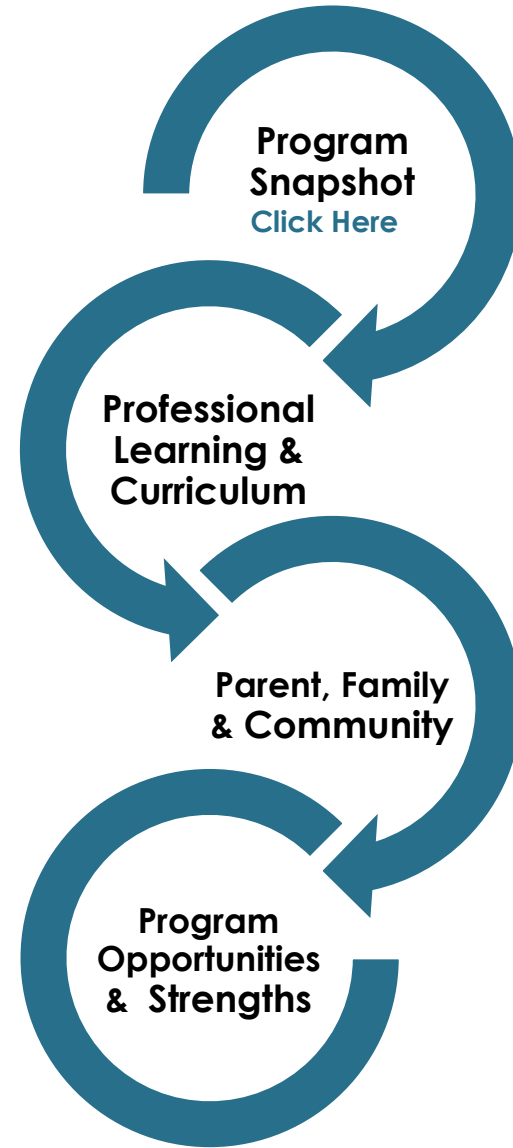
Provide research-based professional development and campus support on best instructional practices to meet the needs of Emergent Bilinguals

Implement academic programs to accelerate the learning of the English language for Emergent Bilinguals and biliteracy of Dual Language Enrichment students

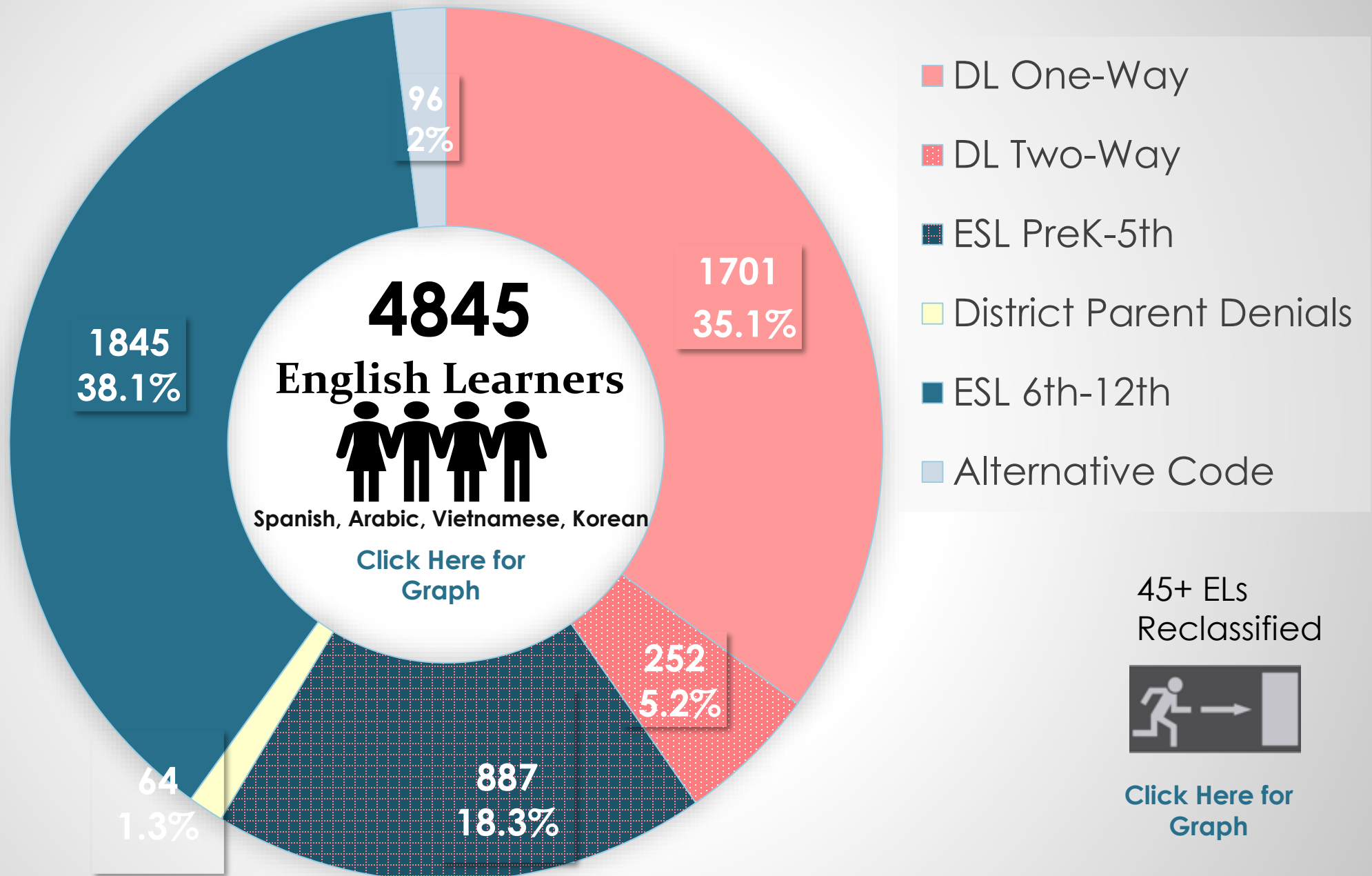
Increase engagement of Emergent Bilingual parents, families, and members of the community through the provision of information, tools, and online resources to improve academic outcomes for Emergent Bilinguals

Ensure federal and state guidelines are implemented and supported with proper documentation for each Emergent Bilingual

BILINGUAL ESL PROGRAMS



Snapshot of English Learners In Denton ISD



ELs Growth



[Click Here for Graph](#)

45+ ELs
Reclassified



[Click Here for Graph](#)

Staffing for Bilingual/Dual Language Techers

[Click Here](#)

142 PreK-5 Bilingual Certified Teachers Districtwide

- 15 New to Denton ISD Bilingual Teachers
 - Campus Staff % of Teachers with ELs

[Click Here](#)

2019-2020 Bilingual Exception & ESL Waiver

- 26 Teachers on ESL Waiver
- 8 Teachers on Bilingual Exception

[Click Here](#)

1

**Virtual Recruitment
of Bilingual Teachers**

2

**District Bilingual
Teacher Interview
Committee**

3

Letter Of Intent

Process for Recruitment of Bilingual /DL Teachers

Professional Learning Opportunities & Curriculum Resources

[CLICK HERE](#)

ZOOM RESOURCE SESSIONS



[CLICK HERE](#)



BE/ESL Resources



Parent, Family & Community Engagement



Authentic Translation



CLICK HERE



CLICK HERE



Needs & Opportunities



Continue to provide **learning opportunities** to teachers with emergent bilinguals in their F2F or CL classrooms

Increase the **parent communication** who speak the 52 languages

Growth in providing **equity** in instructional resources

Strengthening the **Dual Language & ESL Program** at the Secondary Level

Shortage of bilingual campus staff to support dually served students with special needs and their parents.

Increase the number of **ELA ESL Certified Teachers**

Meeting the needs of the **52 languages spoken**

Continual research for the **expansion of Bilingual/DL services**



Celebrating Strengths & Accomplishments

PIONERAS & ELLevate GRANT

26 Currently Enrolled

10 Earned Graduate Degrees

+14 Degrees in 2020-2021

[CLICK HERE](#)

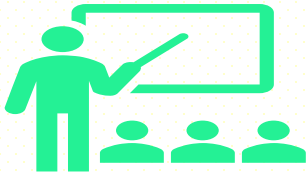
Celebrating Strengths & Accomplishments



Website BE/ESL
Instructional
Resources



Remote Professional
Development



*Summer Remote
Learning, Self-
Directed, & JumpStart
Opportunities*



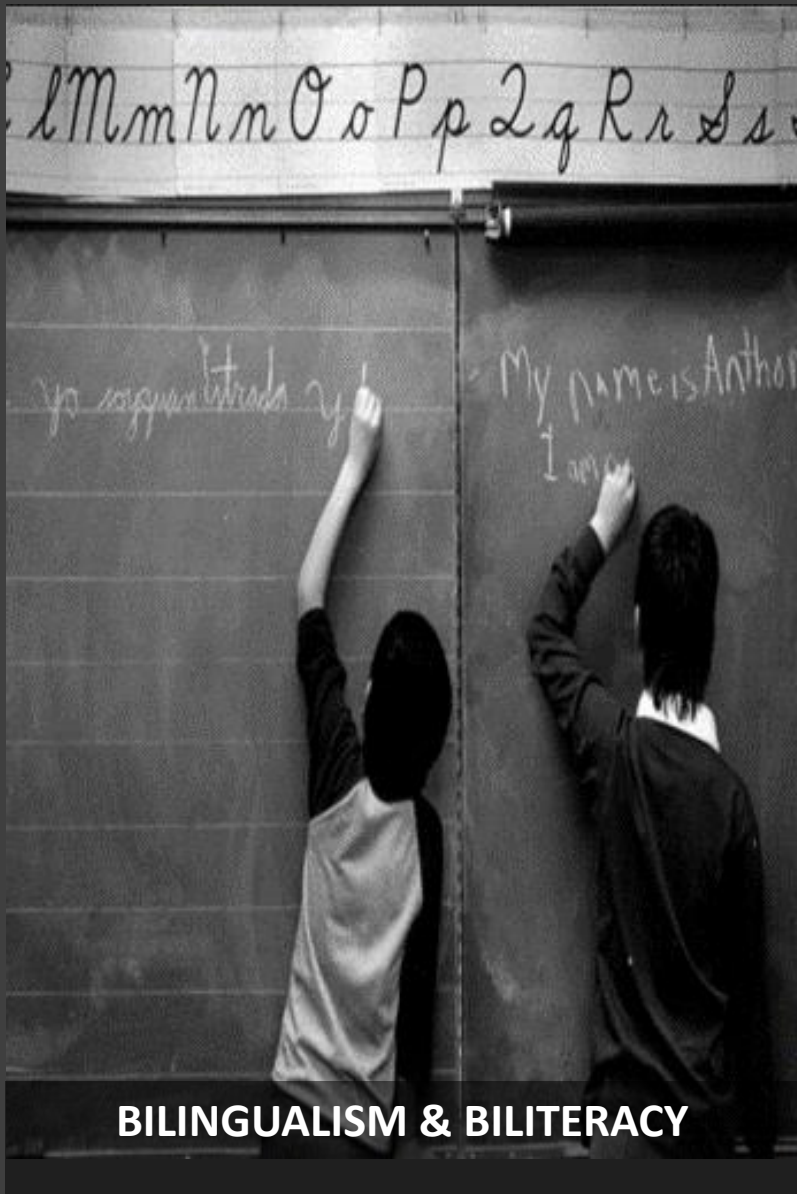
Family Engagement
&
Authentic Translations



HB3 PEIMS Funding
Coding & Remote
LPAC Process with
Testing



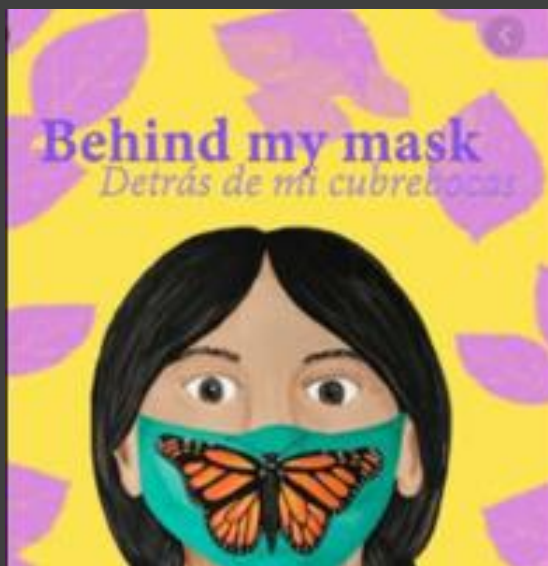
Initiatives for
Connected Learning



BILINGUALISM & BILITERACY



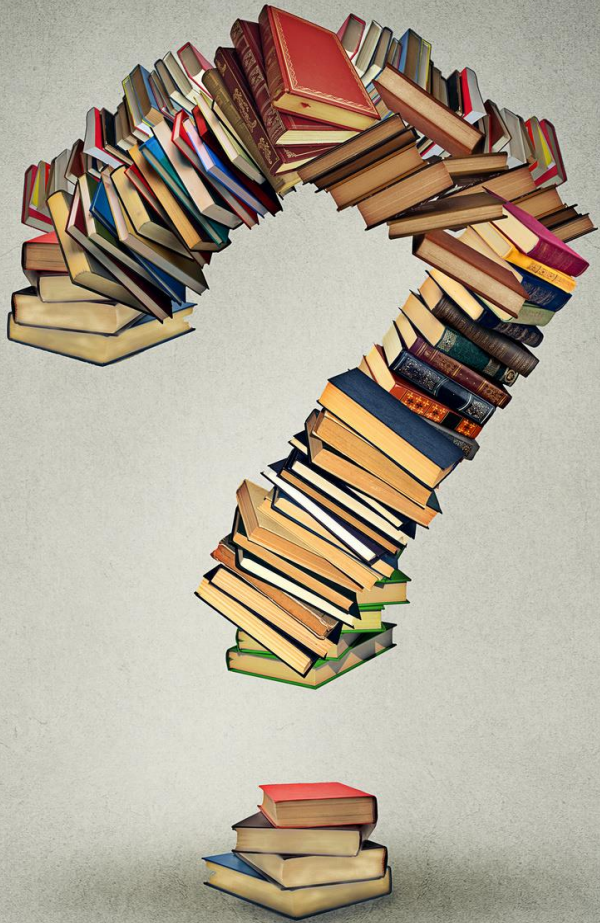
**GRADE LEVEL
ACADEMIC ACHIEVEMENT**



**CROSS CULTURAL
COMPETENCE**

[CLICK HERE](#)

Three pillars of dual language



Questions

Preguntas