

## 2011-2012 District Early Literacy Inventory (ELI) Report

Denton ISD 2011-2012	ELI Kindergarten - Beginning of Year				ELI Kindergarten - Middle of Year				ELI Kindergarten - End of Year			
	Total Students	Overall			Total Students	Overall			Total Students	Overall		
		Stage 1 - At Risk	Stage 2 - Progressing	Stage 3 - On-level		Stage 1 - At Risk	Stage 2 - Progressing	Stage 3 - On-level		Stage 1 - At Risk	Stage 2 - Progressing	Stage 3 - On-level
All Students	1732	18%	37%	45%	1731	8%	24%	68%	1724	5%	17%	78%
Economic Disadvantage	657	31%	41%	28%	638	13%	34%	53%	629	9%	26%	65%
American Indian/Alaskan Native	25	44%	28%	28%	26	8%	35%	58%	24	4%	21%	75%
Asian	56	13%	30%	57%	57	11%	18%	72%	58	5%	7%	88%
Black/African American	221	21%	40%	39%	227	11%	29%	61%	228	8%	22%	70%
Hispanic	374	28%	41%	31%	356	13%	30%	56%	352	7%	22%	71%
Native Hawaiian/Pacific Islander	3	0%	67%	33%	2	0%	0%	100%	2	0%	0%	100%
Two or More Races	46	20%	28%	52%	47	9%	23%	68%	47	9%	9%	83%
White	1007	14%	35%	51%	1016	6%	21%	73%	1013	3%	16%	81%
Female	818	16%	34%	50%	821	7%	22%	71%	819	3%	16%	81%
Male	914	21%	39%	41%	910	9%	27%	64%	905	6%	19%	75%
LEP	99	44%	34%	21%	86	21%	42%	37%	87	16%	30%	54%
Special Ed Indicator	153	44%	37%	19%	152	32%	35%	34%	150	24%	35%	41%

### Literacy Measures assessed on the Kindergarten ELI:

- Letter/Sound Identification (Beginning, Middle, End)
- Sight Word Identification (Middle, End)
- Concepts About Print (Beginning, Middle, End)
- Phonological Awareness (Beginning, Middle, End)
- Sentence Dictation (Middle, End)
- Writing Sample (Middle, End)
- Text Reading (Middle, End)

## 2011-2012 District Early Literacy Inventory (ELI) Report

Denton ISD 2011-2012	ELI First Grade - Beginning of Year				ELI First Grade - Middle of Year				ELI First Grade - End of Year			
	Total Students	Overall			Total Students	Overall			Total Students	Overall		
		Stage 1 - At Risk	Stage 2 - Progressing	Stage 3 - On- level		Stage 1 - At Risk	Stage 2 - Progressing	Stage 3 - On- level		Stage 1 - At Risk	Stage 2 - Progressing	Stage 3 - On- level
All Students	1736	10%	32%	58%	1700	9%	27%	64%	1722	7%	19%	74%
Economic Disadvantage	632	18%	40%	41%	612	17%	36%	47%	619	14%	27%	58%
American Indian/Alaskan Native	18	6%	28%	67%	15	0%	27%	73%	16	0%	13%	88%
Asian	57	5%	11%	84%	60	7%	10%	83%	62	2%	11%	87%
Black/African American	224	14%	42%	44%	214	13%	30%	57%	217	10%	26%	64%
Hispanic	340	14%	38%	48%	323	16%	30%	54%	334	15%	21%	64%
Native Hawaiian/Pacific Islander	1	0%	0%	100%	2	50%	0%	50%	2	0%	50%	50%
Two or More Races	18	11%	11%	78%	19	5%	37%	58%	21	5%	19%	76%
White	1078	8%	30%	62%	1067	7%	26%	67%	1070	5%	18%	78%
Female	793	8%	31%	62%	782	9%	25%	67%	799	7%	16%	76%
Male	943	12%	33%	55%	918	10%	29%	61%	923	7%	21%	72%
LEP	117	26%	37%	38%	116	19%	34%	47%	121	22%	25%	53%
Special Ed Indicator	153	35%	40%	25%	149	38%	32%	30%	150	29%	33%	38%

### Literacy Measures assessed on the First Grade ELI:

- Letter/Sound Identification (Beginning, Middle, End)
- Sight Word Identification (Beginning, Middle, End)
- Phonological Awareness (Beginning, Middle, End)
- Sentence Dictation (Beginning, Middle, End)
- Writing Sample (Middle, End)
- Text Reading (Beginning, Middle, End)

## 2011-2012 District Early Literacy Inventory (ELI) Report

Denton ISD 2011-2012	ELI Second Grade - Beginning of Year				ELI Second Grade - Middle of Year				ELI Second Grade - End of Year			
	Total Students	Overall			Total Students	Overall			Total Students	Overall		
		Stage 1 - At Risk	Stage 2 - Progressing	Stage 3 - On-level		Stage 1 - At Risk	Stage 2 - Progressing	Stage 3 - On-level		Stage 1 - At Risk	Stage 2 - Progressing	Stage 3 - On-level
All Students	1899	15%	19%	67%	1863	11%	25%	64%	1824	11%	25%	64%
Economic Disadvantage	732	27%	25%	48%	691	21%	33%	46%	639	22%	32%	47%
American Indian/Alaskan Native	23	22%	13%	65%	23	13%	22%	65%	22	14%	32%	55%
Asian	67	3%	9%	88%	69	7%	12%	81%	70	7%	13%	80%
Black/African American	203	21%	19%	60%	202	15%	34%	51%	207	19%	33%	48%
Hispanic	518	28%	23%	49%	476	22%	27%	51%	425	20%	26%	53%
Native Hawaiian/Pacific Islander	1	0%	0%	100%	2	0%	0%	100%	2	0%	0%	100%
Two or More Races	14	21%	29%	50%	15	7%	27%	67%	16	13%	25%	63%
White	1073	8%	17%	75%	1076	6%	23%	71%	1082	7%	23%	70%
Female	944	14%	16%	70%	920	10%	22%	68%	902	11%	22%	68%
Male	955	16%	21%	63%	943	12%	28%	60%	922	12%	28%	60%
LEP	276	43%	22%	34%	229	32%	33%	35%	182	30%	31%	39%
Special Ed Indicator	154	48%	18%	34%	152	43%	27%	30%	146	42%	30%	28%

### Literacy Measures assessed on the Second Grade ELI:

- Sight Word Identification (Beginning, Middle, End)
- Sentence Dictation (Beginning, Middle, End)
- Writing Sample (Middle, End)
- Text Reading (Beginning, Middle, End)

## 2011-2012 Spanish Early Literacy Inventory (SELI) Report

Denton ISD 2011-2012	SELI Kindergarten - Beginning of Year				SELI Kindergarten - Middle of Year				SELI Kindergarten - End of Year			
	Total Students	Overall			Total Students	Overall			Total Students	Overall		
		At Risk	Progressing	On-level		At Risk	Progressing	On-level		At Risk	Progressing	On-level
All Students	317	42%	40%	18%	339	10%	36%	54%	337	8%	22%	71%
Economic Disadvantage	312	42%	40%	18%	334	10%	36%	54%	332	8%	22%	70%
American Indian/Alaskan Native	7	43%	57%	0%	7	29%	57%	14%	7	43%	29%	29%
Black/African American	1	100%	0%	0%	1	0%	100%	0%	1	0%	0%	100%
Hispanic	296	42%	40%	19%	315	10%	36%	54%	313	7%	22%	72%
White	13	38%	38%	23%	16	19%	13%	69%	16	13%	19%	69%
Female	158	38%	44%	18%	171	9%	33%	58%	174	7%	18%	75%
Male	159	46%	35%	19%	168	12%	39%	49%	163	9%	26%	66%
LEP	310	42%	40%	18%	332	11%	36%	53%	330	8%	22%	70%
Special Ed Indicator	30	60%	40%	0%	29	38%	38%	24%	28	39%	36%	25%

### Literacy Measures assessed on the Kindergarten SELI:

- Letter/Sound Identification (Beginning, Middle, End)
- Sight Word Identification (Middle, End)
- Concepts About Print (Beginning, Middle, End)
- Phonological Awareness (Beginning, Middle, End)
- Sentence Dictation (Middle, End)
- Writing Sample (Middle, End)
- Text Reading (Middle, End)

## 2011-2012 Spanish Early Literacy Inventory (SELI) Report

Denton ISD	2011- 2012	SELI 1st Grade - Beginning of Year			SELI 1st Grade - Middle of Year			SELI 1st Grade - End of Year					
		Total Students	Overall		Total Students	Overall		Total Students	Overall				
			At Risk	Progressing		On-level	At Risk		Progressing	On-level	At Risk	Progressing	On-level
All Students		307	23%	28%	49%	308	9%	30%	61%	312	12%	21%	67%
Economic Disadvantage		295	23%	28%	49%	296	9%	29%	61%	300	12%	21%	67%
American Indian/Alaskan Native		5	20%	40%	40%	5	0%	40%	60%	5	0%	40%	60%
Hispanic		293	23%	27%	50%	294	9%	29%	62%	298	11%	20%	68%
White		9	44%	44%	11%	9	11%	56%	33%	9	33%	33%	33%
Female		147	21%	29%	50%	145	10%	29%	61%	147	13%	20%	67%
Male		160	26%	27%	48%	163	9%	30%	61%	165	11%	22%	67%
LEP		305	24%	28%	49%	306	9%	30%	61%	310	12%	21%	67%
Special Ed Indicator		33	45%	36%	18%	32	31%	44%	25%	32	28%	38%	34%

### Literacy Measures assessed on the First Grade SELI:

- Letter/Sound Identification (Beginning, Middle, End)
- Sight Word Identification (Beginning, Middle, End)
- Phonological Awareness (Beginning, Middle, End)
- Sentence Dictation (Beginning, Middle, End)
- Writing Sample (Middle, End)
- Text Reading (Beginning, Middle, End)

## 2011-2012 Spanish Early Literacy Inventory (SELI) Report

Denton ISD 2011-2012	SELI 2nd Grade - Beginning of Year				SELI 2nd Grade - Middle of Year				SELI 2nd Grade - End of Year			
	Total Students	Overall			Total Students	Overall			Total Students	Overall		
		At Risk	Progressing	On-level		At Risk	Progressing	On-level		At Risk	Progressing	On-level
All Students	251	12%	27%	61%	253	9%	33%	58%	256	11%	29%	60%
Economic Disadvantage	249	12%	27%	61%	252	9%	33%	58%	254	11%	29%	60%
American Indian/Alaskan Native	2	0%	0%	100%	2	0%	0%	100%	2	0%	50%	50%
Black/African American	1	0%	0%	100%	1	0%	0%	100%	1	0%	0%	100%
Hispanic	248	13%	27%	60%	250	9%	34%	58%	253	11%	29%	60%
Female	129	11%	24%	65%	127	7%	30%	63%	130	12%	24%	65%
Male	122	14%	30%	56%	126	10%	37%	53%	126	10%	34%	56%
LEP	251	12%	27%	61%	253	9%	33%	58%	256	11%	29%	60%
Special Ed Indicator	24	54%	33%	13%	22	50%	41%	9%	23	57%	39%	4%

### Literacy Measures assessed on the Second Grade SELI:

- Sight Word Identification (Beginning, Middle, End)
- Sentence Dictation (Beginning, Middle, End)
- Writing Sample (Middle, End)
- Text Reading (Beginning, Middle, End)

## Early Literacy Inventory (ELI)

### Assessment Summary

#### Early Literacy Inventory (ELI) Assessment Program Status:

Growth of K-2 District Average from 2011 Beginning-of-Year Administration to 2012 End-of-Year Administration:

#### Kindergarten: Beginning of the Year (BOY)

Stage 1=At-Risk

Stage 2=Progressing

Stage 3=On-Level

KDG BOY ELI	Letter ID		Letter Sounds		Word List		Concepts about Print		Phonological Awareness		Reading Level #		Overall Stage At Risk
	Score 54	Stage	Score 26	Stage	Score	Stage	Score 8	Stage	Score 6	Stage	Score	Stage	
District Average	39	3	15	3	-----	-----	6	3	3	2	-----	-----	18%

#### Kindergarten: End of the Year (EOY)

Stage 1=At-Risk

Stage 2=Progressing

Stage 3=On-Level

KDG EOY ELI	Letter ID		Letter Sounds		Word List		Concepts about Print		Phonological Awareness		Reading Level #		Dictation		Writing		Overall Stage At Risk
	Score 54	Stage	Score 26	Stage	Score 25	Stage	Score 10	Stage	Score 5	Stage	Score	Stage	Score 27	Stage	Score 6	Stage	
District Average	53	3	25	3	23	3	10	3	5	3	D	3	24	3	5	2	5%

## Early Literacy Inventory (ELI)

### Assessment Summary

#### Early Literacy Inventory (ELI) Assessment Program Status:

Growth of K-2 District Average from 2011 Beginning-of-Year Administration to 2012 End-of-Year Administration:

#### First Grade: Beginning of the Year (BOY)

Stage 1=At-Risk

Stage 2=Progressing

Stage 3=On-Level

First Grade BOY ELI	Letter ID		Letter Sounds		Word List		Phonological Awareness		Dictation		Reading Level #		Overall Stage At Risk
	Score 54	Stage	Score 26	Stage	Score 20	Stage	Score 8	Stage	Score 36	Stage	Score	Stage	
District Average	52	3	24	3	16	3	5	3	30	2	F	3	10%

#### First Grade: End of the Year (EOY)

Stage 1=At-Risk

Stage 2=Progressing

Stage 3=On-Level

First Grade EOY ELI	Letter ID		Letter Sounds		Word List		Phonological Awareness		Dictation		Reading Level #		Fluency (Text Level E or above)		Writing		Overall Stage
	Score 54	Stage	Score 26	Stage	Score 20	Stage	Score 8	Stage	Score 38	Stage	Score	Score 60+/wpm	Stage	Score 20	Stage		
District Average	54	3	26	3	19	3	8	3	36	2	L	88	3	16	3	7%	



## Early Literacy Inventory (ELI)

### Assessment Summary

#### Early Literacy Inventory (ELI) Assessment Program Status:

Growth of K-2 District Average from 2011 Beginning-of-Year Administration to 2012 End-of-Year Administration:

#### Second Grade: Beginning of the Year (BOY)

Stage 1=At-Risk

Stage 2=Progressing

Stage 3=On-Level

Second Grade BOY ELI	Word Lists		Dictation		Reading Level #	Fluency (Text Level E or above)			Overall Stage At Risk
	Score 20	Stage	Score 47	Stage	Score	Score 60+/wpm	Stage		
District Average	18	3	42	2	L	86	3		15%

#### Second Grade: End of the Year (EOY)

Stage 1=At-Risk

Stage 2=Progressing

Stage 3=On-Level

Second Grade EOY ELI	Word Lists		Dictation		Reading Level #	Fluency (Text Level E or above)		Writing		Overall Stage At-Risk
	Score 20	Stage	Score 47	Stage	Score	Score 90+/wpm	Stage	Score 20	Stage	
District Average	19	2	43	2	P	103	3	15	2	12%

## Spanish Early Literacy Inventory (SELI)

### Assessment Summary

#### Spanish Early Literacy Inventory (SELI) Assessment Program Status:

Growth of K-2 District Average from 2011 Beginning-of-Year Administration to 2012 End-of-Year Administration:

#### Kindergarten: Beginning of the Year (BOY)

Stage 1=At-Risk

Stage 2=Progressing

Stage 3=On-Level

KDG BOY SELI	Letter ID		Letter Sounds		Word List		Concepts about Print		Phonological Awareness		Reading Level #		Overall Stage At Risk
	Score 61	Stage	Score 30	Stage	Score	Stage	Score 7	Stage	Score 6	Stage	Score	Stage	
District Average	25	2	11	2	-----	-----	3	2	2	2	-----	-----	42%

#### Kindergarten: End of the Year (EOY)

Stage 1=At-Risk

Stage 2=Progressing

Stage 3=On-Level

KDG EOY SELI	Letter ID		Letter Sounds		Word List		Concepts about Print		Phonological Awareness		Reading Level #		Dictation		Writing		Overall Stage At Risk
	Score 61	Stage	Score 30	Stage	Score 25	Stage	Score 9	Stage	Score 5	Stage	Score 27	Stage	Score 6	Stage			
District Average	56	2	29	3	23	3	8	2	5	3	E	3	23	3	5	2	8%

## Spanish Early Literacy Inventory (SELI)

### Assessment Summary

#### Spanish Early Literacy Inventory (SELI) Assessment Program Status:

Growth of K-2 District Average from 2011 Beginning-of-Year Administration to 2012 End-of-Year Administration:

#### First Grade: Beginning of the Year (BOY)

Stage 1=At-Risk

Stage 2=Progressing

Stage 3=On-Level

1st BOY SELI	Letter ID		Letter Sounds		Word List		Phonological Awareness		Dictation		Reading Level #	Overall Stage At Risk	
	Score 61	Stage	Score 30	Stage	Score 20	Stage	Score 8	Stage	Score 38	Stage	Score		Stage
District Average	54	3	28	3	13	2	3	2	33	3	F	3	23%

#### First Grade: End of the Year (EOY)

Stage 1=At-Risk

Stage 2=Progressing

Stage 3=On-Level

1st EOY SELI	Letter ID		Letter Sounds		Word List		Phonological Awareness		Dictation		Reading Level #	Fluency (Text Level E or above)		Writing		Overall Stage At Risk
	Score 61	Stage	Score 30	Stage	Score 20	Stage	Score 8	Stage	Score 39	Stage	Score	Score 60+/wpm	Stage	Score 20	Stage	
District Average	60	3	30	3	19	3	6	2	37	3	L	76	3	16	3	12%

## Spanish Early Literacy Inventory (SELI)

### Assessment Summary

**Spanish Early Literacy Inventory (SELI) Assessment Program Status:**

**Growth of K-2 District Average from 2011 Beginning-of-Year Administration to 2012 End-of-Year Administration:**

**Second Grade: Beginning of the Year (BOY)**

Stage 1=At-Risk      Stage 2=Progressing      Stage 3=On-Level

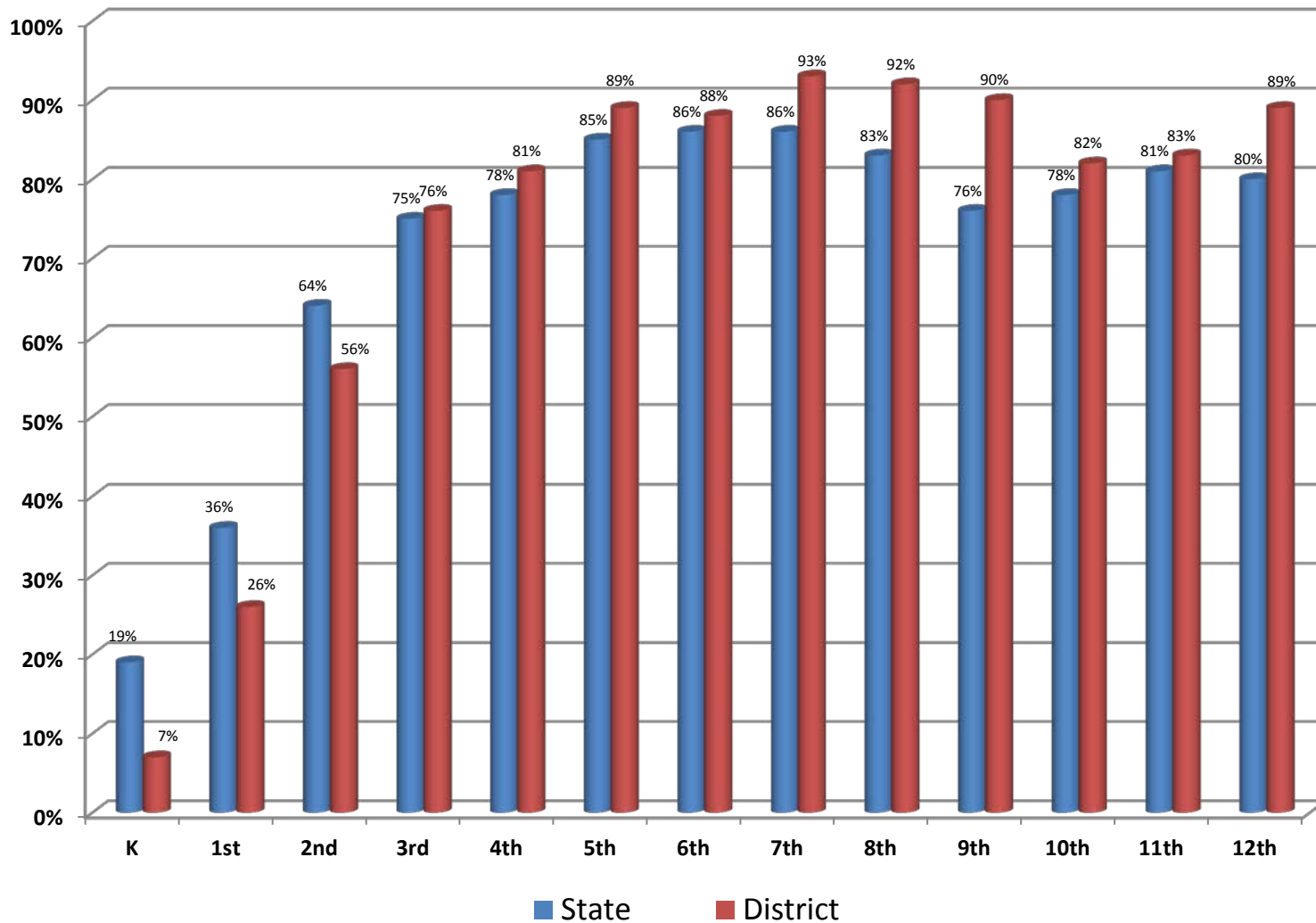
Second Grade BOY SELI	Word Lists		Dictation		Reading Level #	Fluency (Text Level E or above)	Overall Stage At Risk	
	Score 20	Stage	Score 47	Stage				Score
District Average	18	3	43	2	L	69	3	12%

**Second Grade: End of the Year (EOY)**

Stage 1=At-Risk      Stage 2=Progressing      Stage 3=On-Level

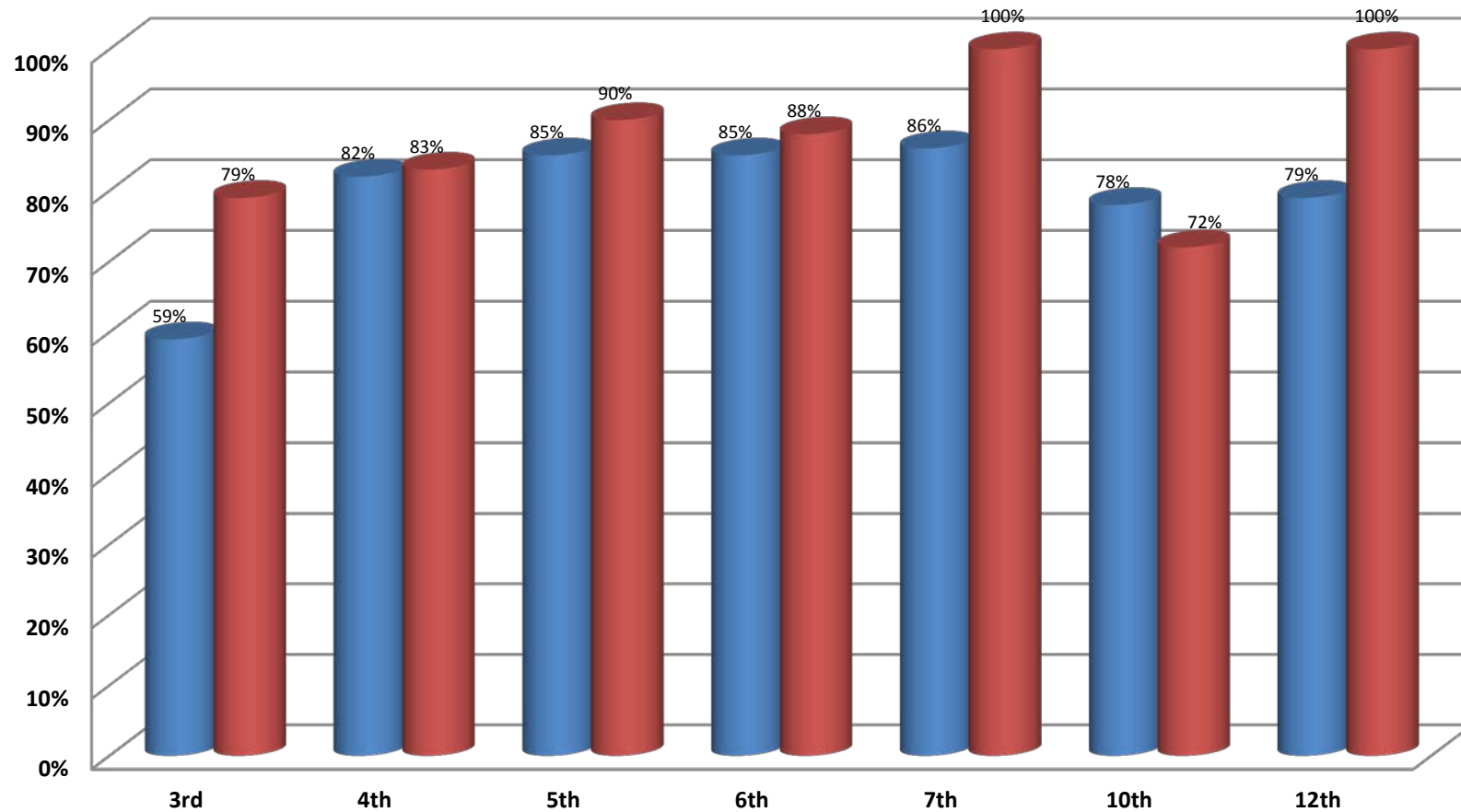
Second Grade EOY SELI	Word Lists		Dictation		Reading Level #	Fluency (Text Level E or above)	Writing		Overall Stage At Risk	
	Score 20	Stage	Score 47	Stage			Score 20	Stage		
District Average	19	2	45	3	N	90	3	14	2	11%

## TELPAS Composite Ratings for ELLs at Advance and Advance High Proficiency Levels for 2012



Source: TEA's Texas English Language Proficiency Assessment System Summary Report for Denton ISD and State 2012

## TELPAS Composite Rating for ELLs with Four Years in U.S. Schools at Advance and Advance High in 2012



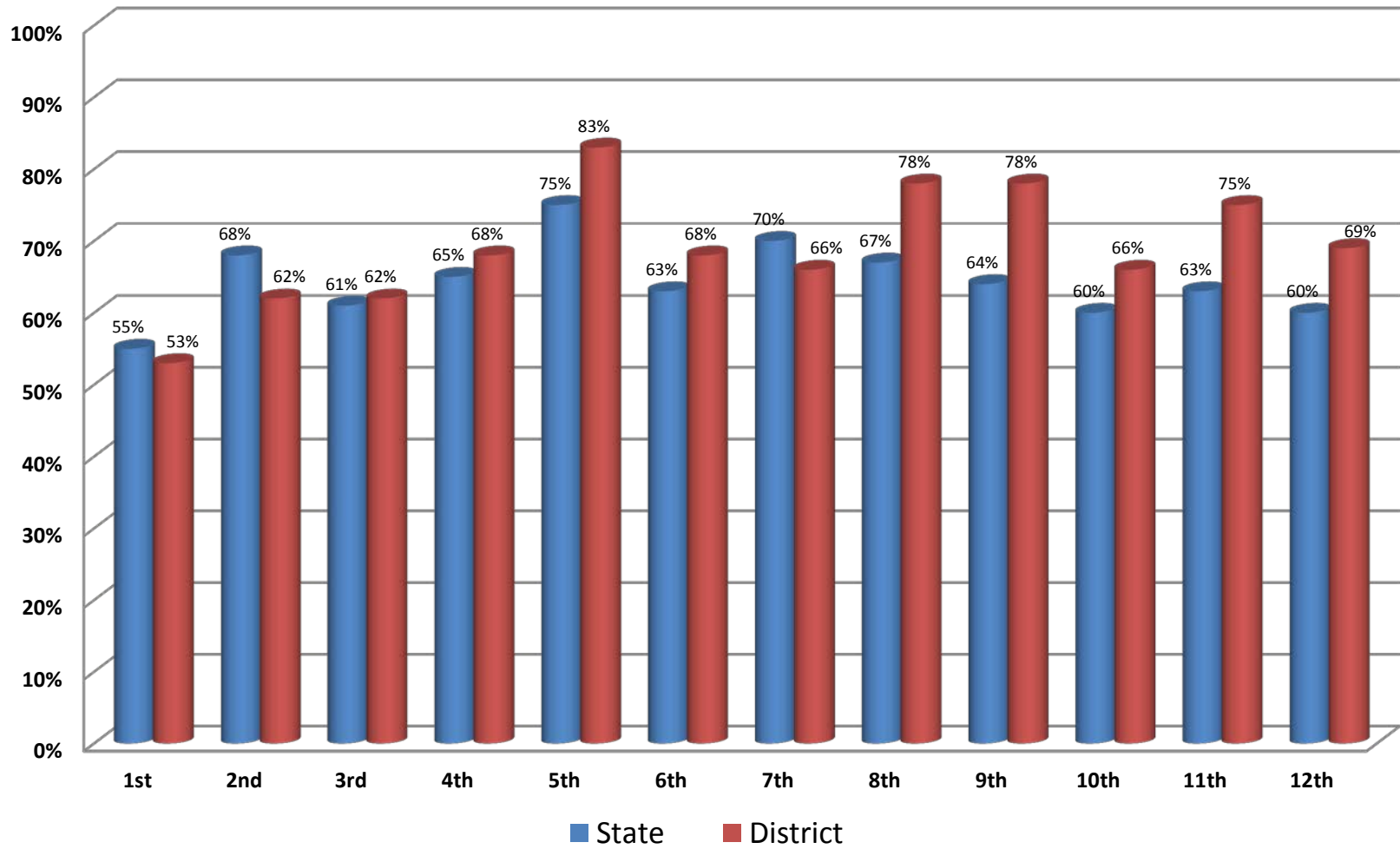
**Note:** Grades 8, 9, and 11 are masked (not reported) due to small number of students to protect confidentiality.

■ State ■ District

Source: TEA's Texas English Language Proficiency Assessment System Summary Report for Denton ISD and State 2012

TELPAS Attachment 2b

## ELLs Progressing at Least One Language Proficiency Level in TELPAS Composite Rating from 2011 to 2012



Source: TEA's Texas English Language Proficiency Assessment System Summary Report for Denton ISD and State 2012

TELPAS Attachment 2c

**Denton ISD 2012 Performance Based Monitoring Analysis System (PBMAS)  
Bilingual/English as Second Language Needs Assessment**

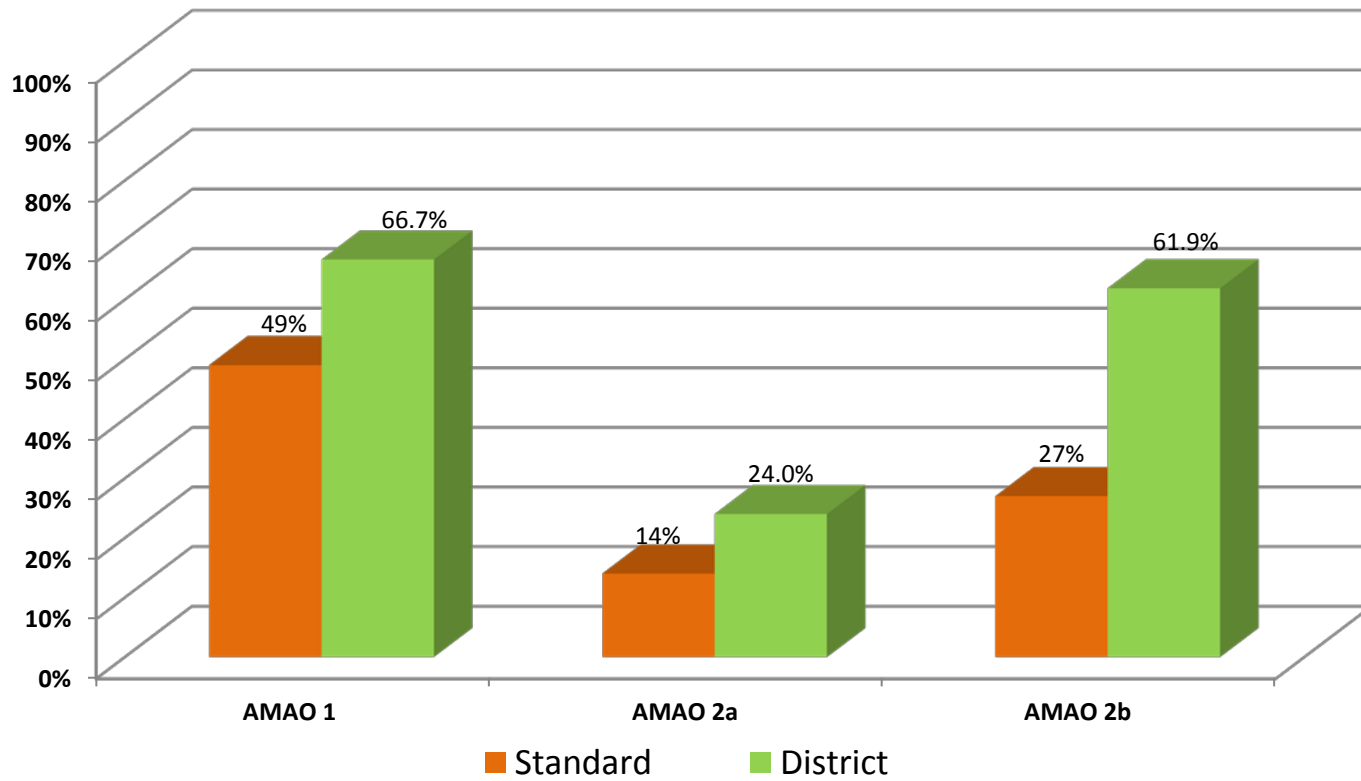
2012 PBMAS Standards in Percentage	70		70		65		70	
Subject	Math		Reading/ELA		Science		Social Studies	
PBMAS Indicator	%	+ / -	%	+ / -	%	+ / -	%	+ / -
BE STAAR Passing Rate at TAKS Equivalency	81.9	▲ 11.9	82.6	▲ 12.6	70.8	▲ 5.8	No Data	
ESL STAAR Passing Rate at TAKS Equivalency	76.3	▲ 6.3	74.6	▲ 4.6	52.8	▼ -12.2	92.1	▲ 22.1
LEP (Not Served in BE/ESL) STAAR Passing Rate at TAKS Equivalency	78.6	▲ 8.6	92.9	▲ 22.9	100.0	▲ 35.0	No Data	
LEP Year-After Exit English STAAR Passing Rate at TAKS Equivalency	92.7	▲ 22.7	94.7	▲ 24.7	85.6	▲ 20.6	96.9	▲ 26.9

PBMAS Indicator	PBMAS Standard	District Rate	+ / -
LEP Dropout Rate 7-12	2.0	0.2	🚩 -1.8
LEP RHSP/DAP Diploma Rate	70.0	78.7	🚩 8.7
LEP Graduation Rate	75.0	90.8	🚩 15.8
TELPAS Reading Beginning Proficiency	4.8	3.5	🚩 -1.3
TELPAS Composite Rating: Beg./Int. for Multiple Years	8.0	4.1	🚩 -3.9

Source: TEA 2012 Performance-Based Monitoring Analysis  
System BE/ESL for Denton ISD



## AMAOs 1 and 2: LEP Progress and Attainment, 2012



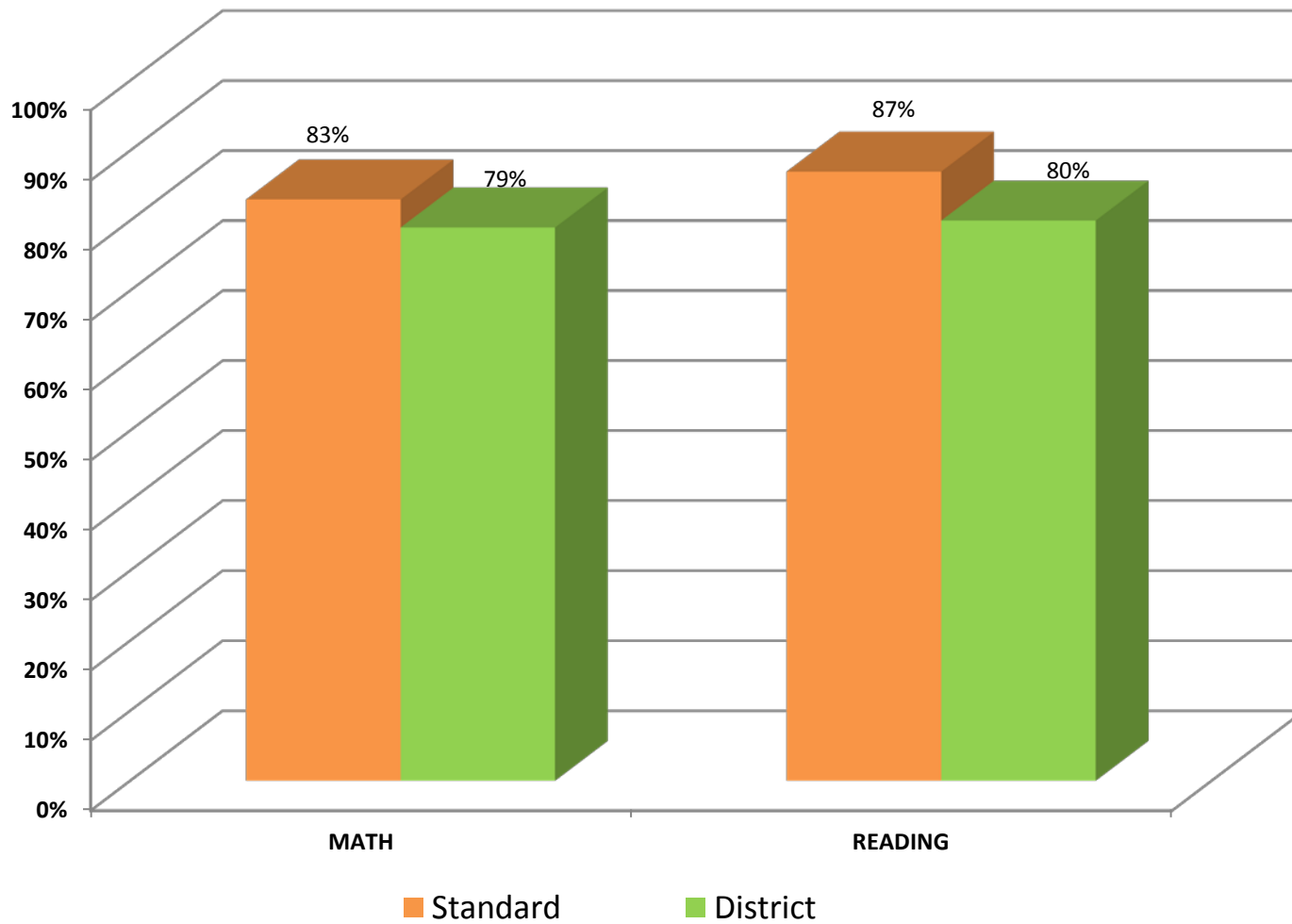
### AMAOs Indicators

AMAO 1: LEP Student Progress (All Grades)

AMAO 2a: LEP Attainment (Students as LEP 1-4 years)

AMAO 2b: LEP Attainment (Students as LEP 5 or more years)

### AMAO 3: LEP Adequate Yearly Progress, 2012



Source: TEA Adequate Yearly Progress District Data Table