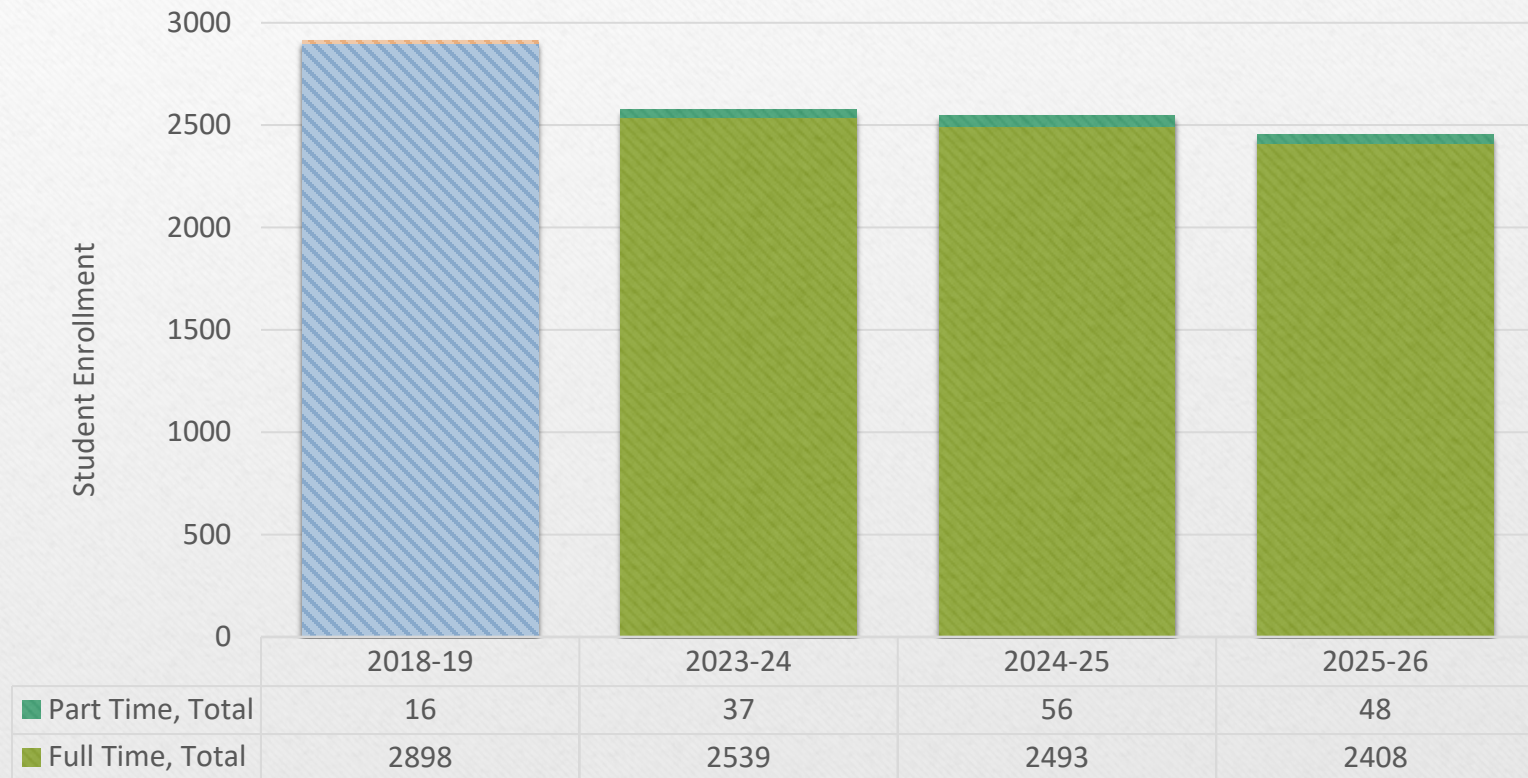


Ashland School District

District Enrollment and Exit Counts

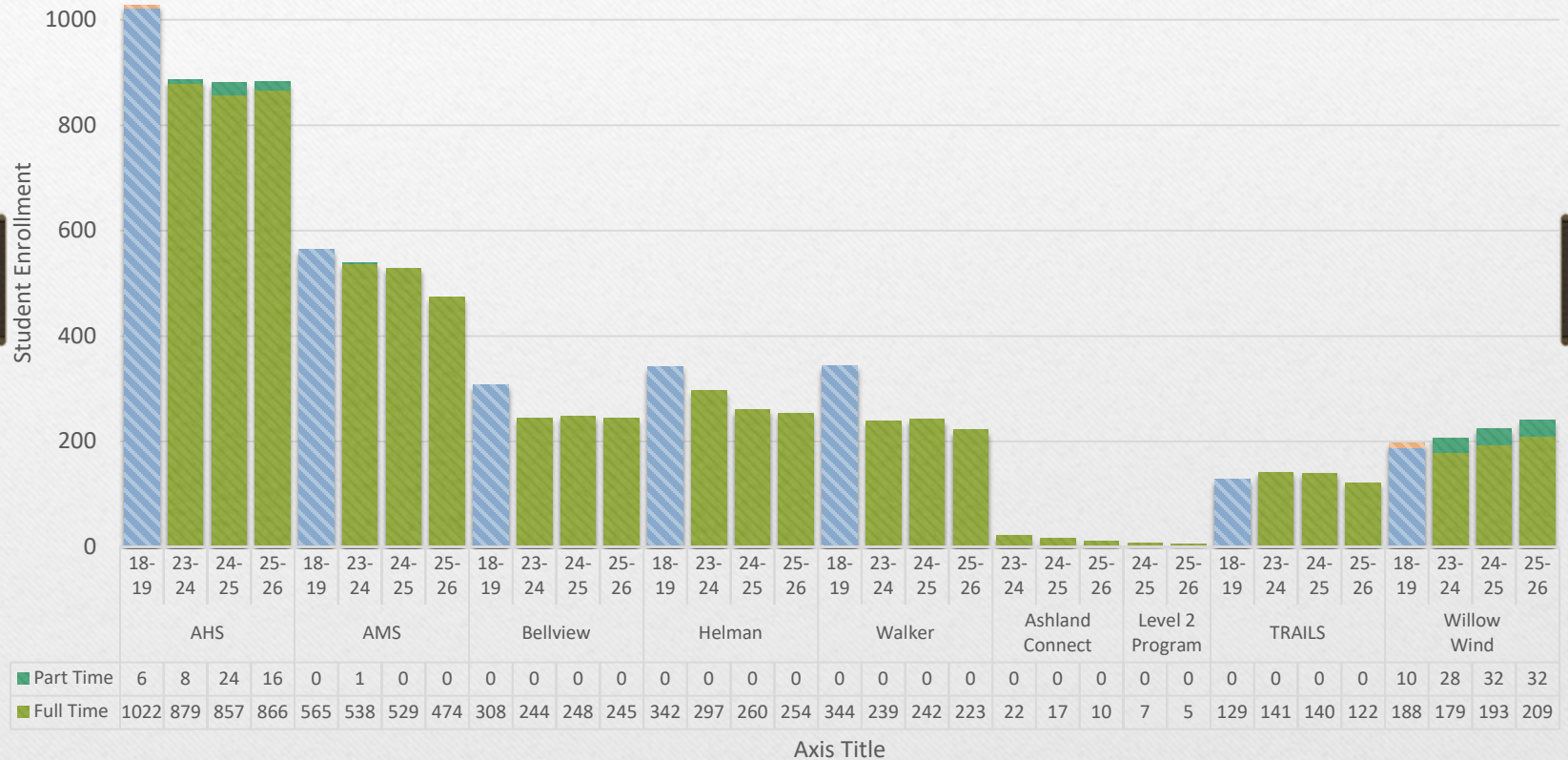
October 2025

2025-26 Ashland School District Multi-Year Comparison



As of the first school day in October

2025-26 Ashland School District October Enrollment by Site Multi-Year Comparison



As of the first school day in October

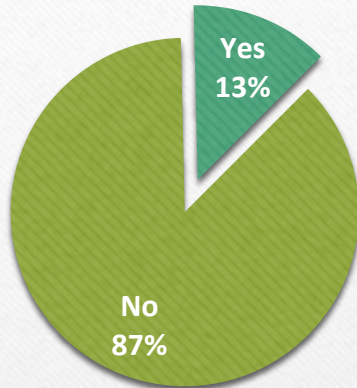
2025-26 October Enrollment Snapshot

School Site	Gr KG	Gr 1	Gr 2	Gr 3	Gr 4	Gr 5	Gr 6	Gr 7	Gr 8	Gr 9	Gr 10	Gr 11	Gr 12	District Total
Ashland High School										245	213	193	231	882
Full Time										243	211	187	225	866
Part Time										2	2	6	6	16
Ashland Middle School							134	175	165					474
Bellview Elementary	36	50	35	38	47	39								245
Helman Elementary	39	31	42	42	43	57								254
Walker Elementary	26	34	40	42	37	44								223
Ashland Connect			1		3	1	1	1	3					10
Level 2 Program						1	1	1	1		1			5
TRAILS	11	13	12	9	15	15	17	17	13					122
Willow Wind	23	25	29	24	29	31	27	28	25					241
Full Time	19	22	23	22	25	25	24	24	25					209
Part Time	4	3	6	2	4	6	3	4						32
2025-26 District Total	135	153	159	155	174	188	180	222	207	245	214	193	231	2456
25-26 District Total, Full-Time	131	150	153	153	170	182	177	218	207	243	212	187	225	2408
25-26 District Total, Part-Time	4	3	6	2	4	6	3	4	0	2	2	6	6	48
2024-25 District Total	151	156	160	171	187	176	220	203	242	235	213	228	207	2549
24-25 District Total, Full-Time	149	151	158	166	179	174	215	203	239	234	212	216	197	2493
24-25 District Total, Part-Time	2	5	2	5	8	2	5	0	3	1	1	12	10	56

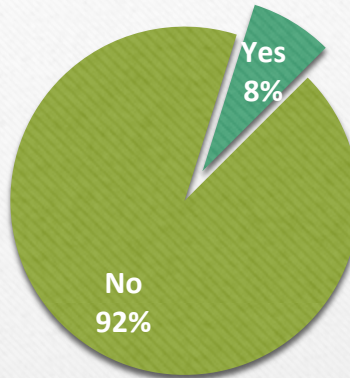
As of the first school day in October

2025-26 October Enrollment Snapshot – Race & Ethnicity

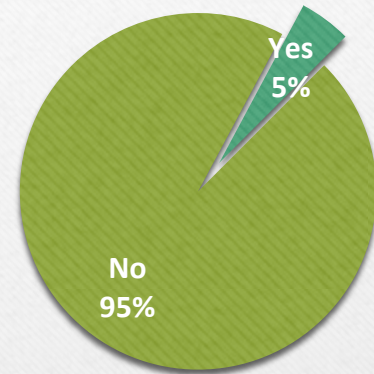
Hispanic or Latino



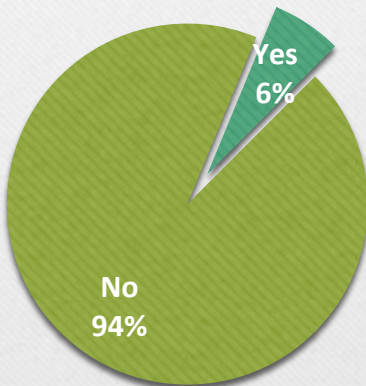
Asian



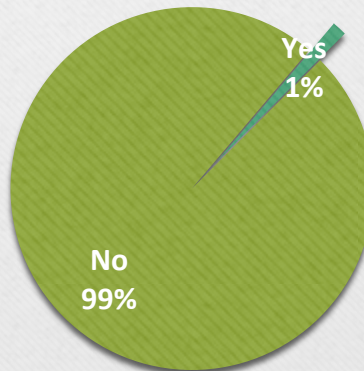
Black or African American



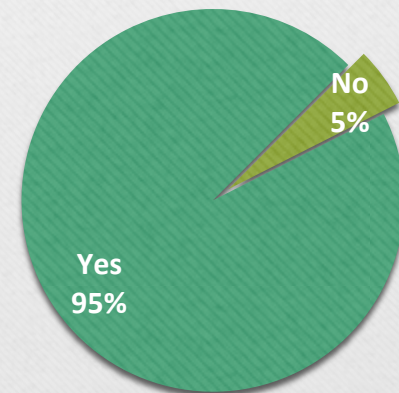
Native American or Alaska Native



Native Hawaiian or Other Pacific Islander



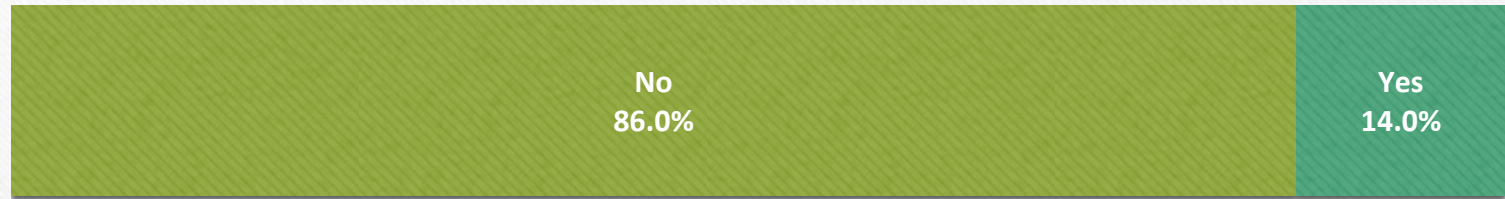
White



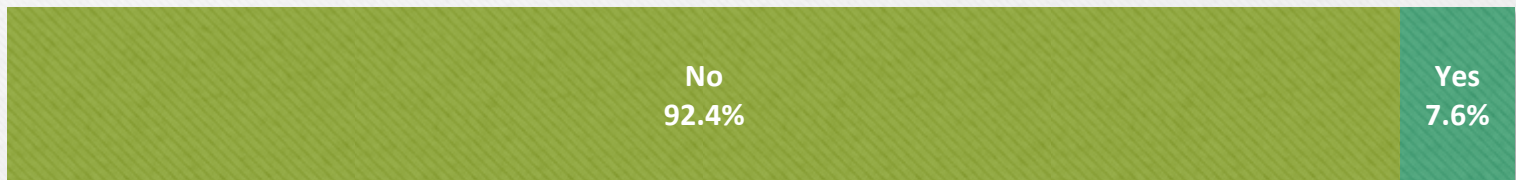
As of the first school day in October

2025-26 October Enrollment Snapshot – Special Programs

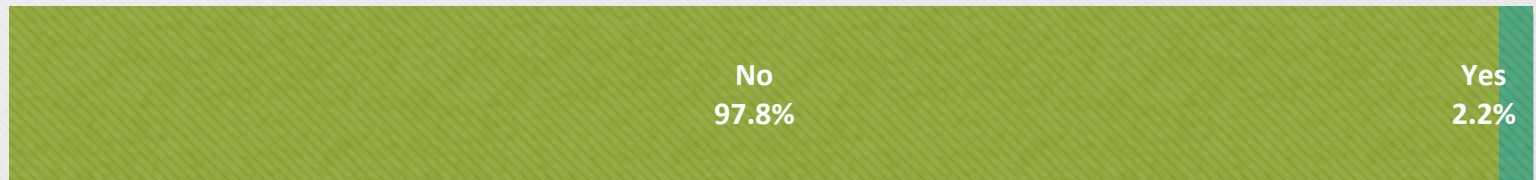
Special Education



504 Plans



English Learners

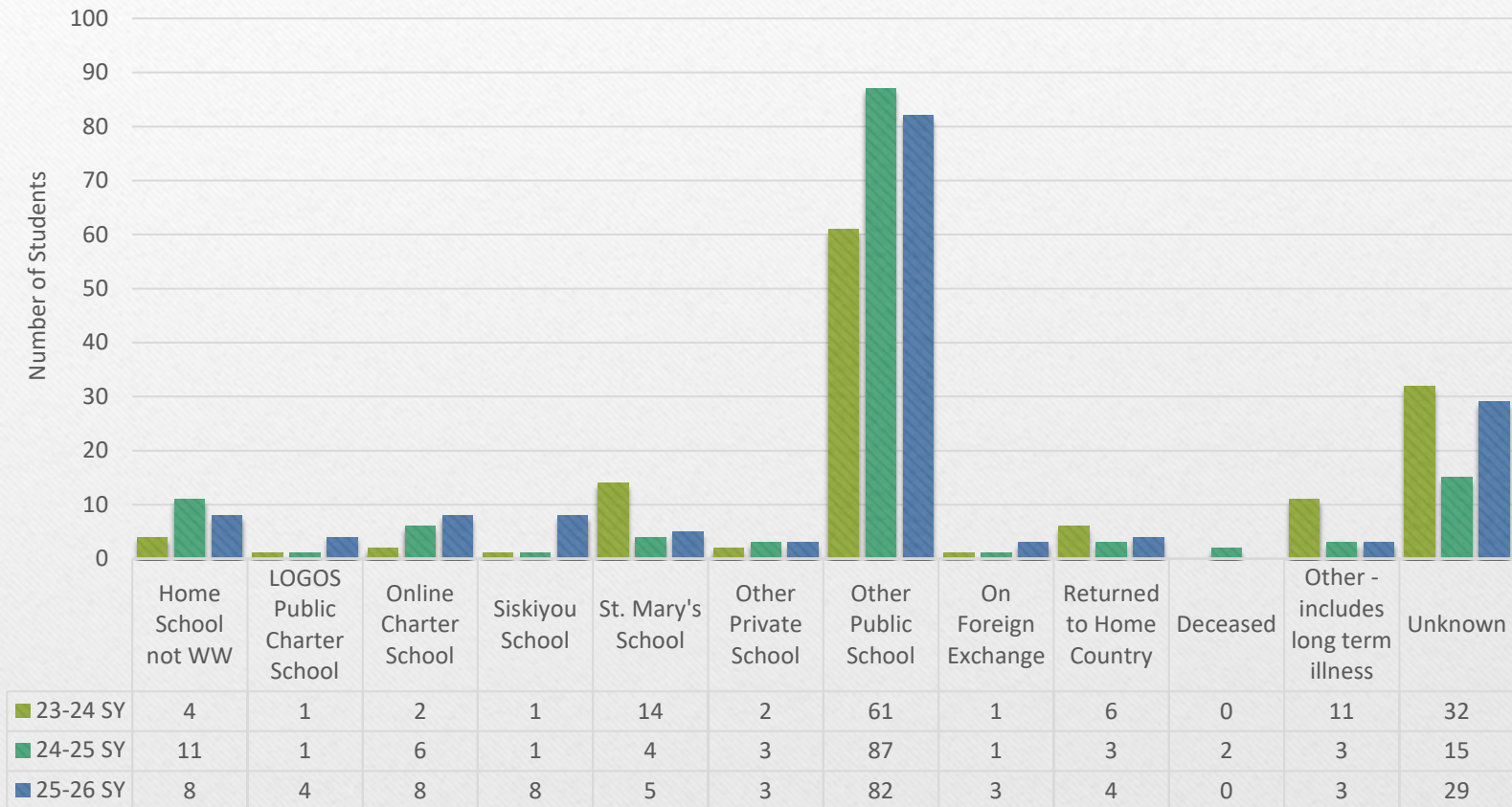


As of the first school day in October

Summertime Student Exits

Three-Year Trend

School Years 2023-24 to 2025-26



Indicates the number of students who were actively enrolled during the last week of school but failed to re-enroll during Quarter 1 [7/1-first school day in Oct] of the following school year.

Summertime Completion Credential Exits

Three-Year Trend

School Years 2023-24 to 2025-26



Includes students actively enrolled during the last week of school who did not re-enroll during Quarter 1 [7/1-first school day in Oct] of the following school year. Does not include midyear graduates or GED completers.

Ashland School District Class Size & Teacher Loads

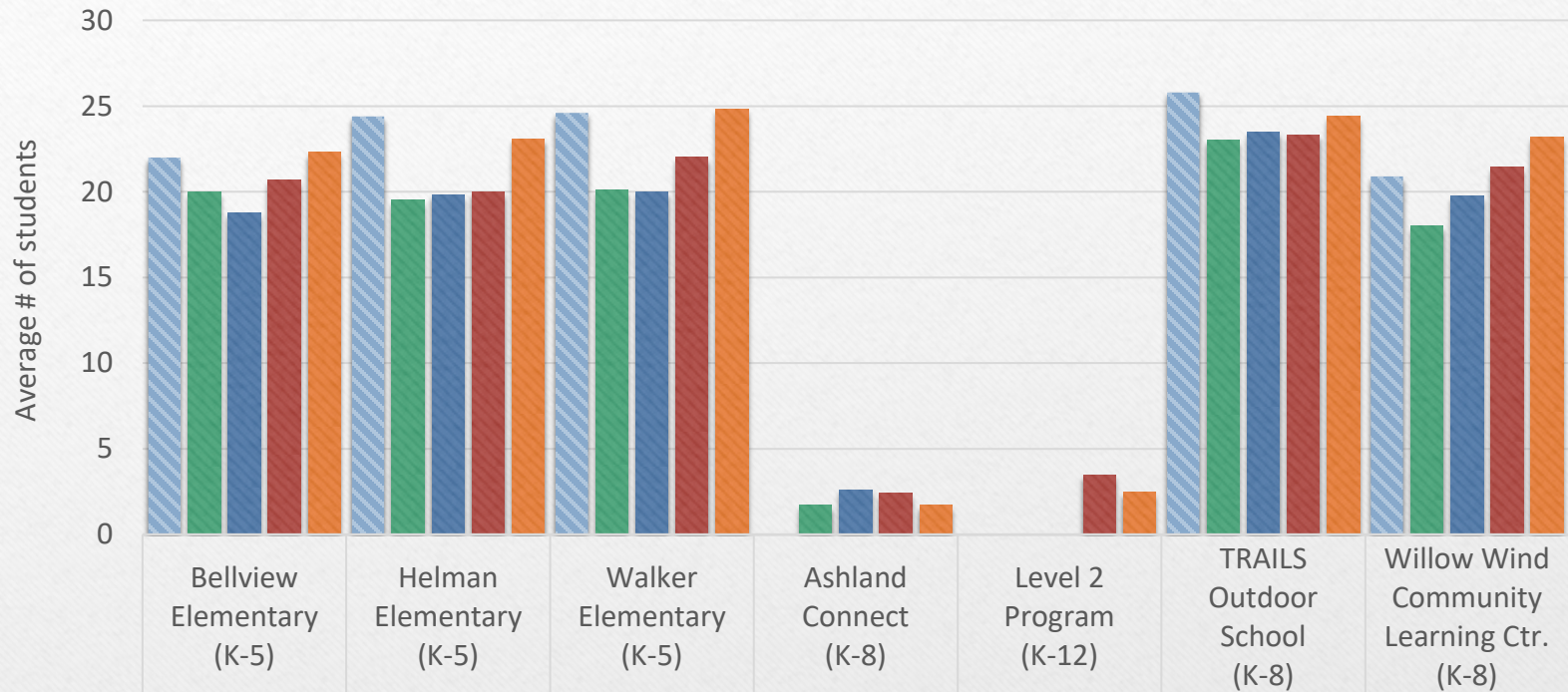
October 2025

2025-26 Elementary Class Sizes

Bellview		Helman		Walker		TRAILS		Willow Wind	
Grade	Class size	Grade	Class Size	Grade	Class Size	Grade	Class Size	Grade	Class Size
K	17	K	23	K/1	21	K/1	24	K	19
K	16	K/1	24	K/1	18	2/3	21	1	22
1	24	1	23	K/1	21	4/5	30	2	23
1	23	2/3	26	2/3	28	6/7	24	3	22
2/3	23	2/3	27	2/3	27	7/8	23	4	25
2/3	24	2/3	28	2/3	27			5	25
2/3	24	4	21	4/5	26			6	24
4/5	27	4	21	4/5	27			7	24
4/5	27	5	28	4/5	28			8	25
4/5	28	5	27						
Sitebased	12	Sitebased	6						

As of the first school day in October

Average October Elementary Class Size Multi-Year Comparison



2018-19	Bellview Elementary (K-5)	22.0	Helman Elementary (K-5)	24.4	Walker Elementary (K-5)	24.6		TRAILS Outdoor School (K-8)	25.8	Willow Wind Community Learning Ctr. (K-8)	20.9
2022-23		20.0		19.5		20.1	1.7		23.0		18.0
2023-24		18.8		19.8		20.0	2.6		23.5		19.8
2024-25		20.7		20.0		22.0	2.4	3.5	23.3		21.4
2025-26		22.3		23.1		24.8	1.7	2.5	24.4		23.2

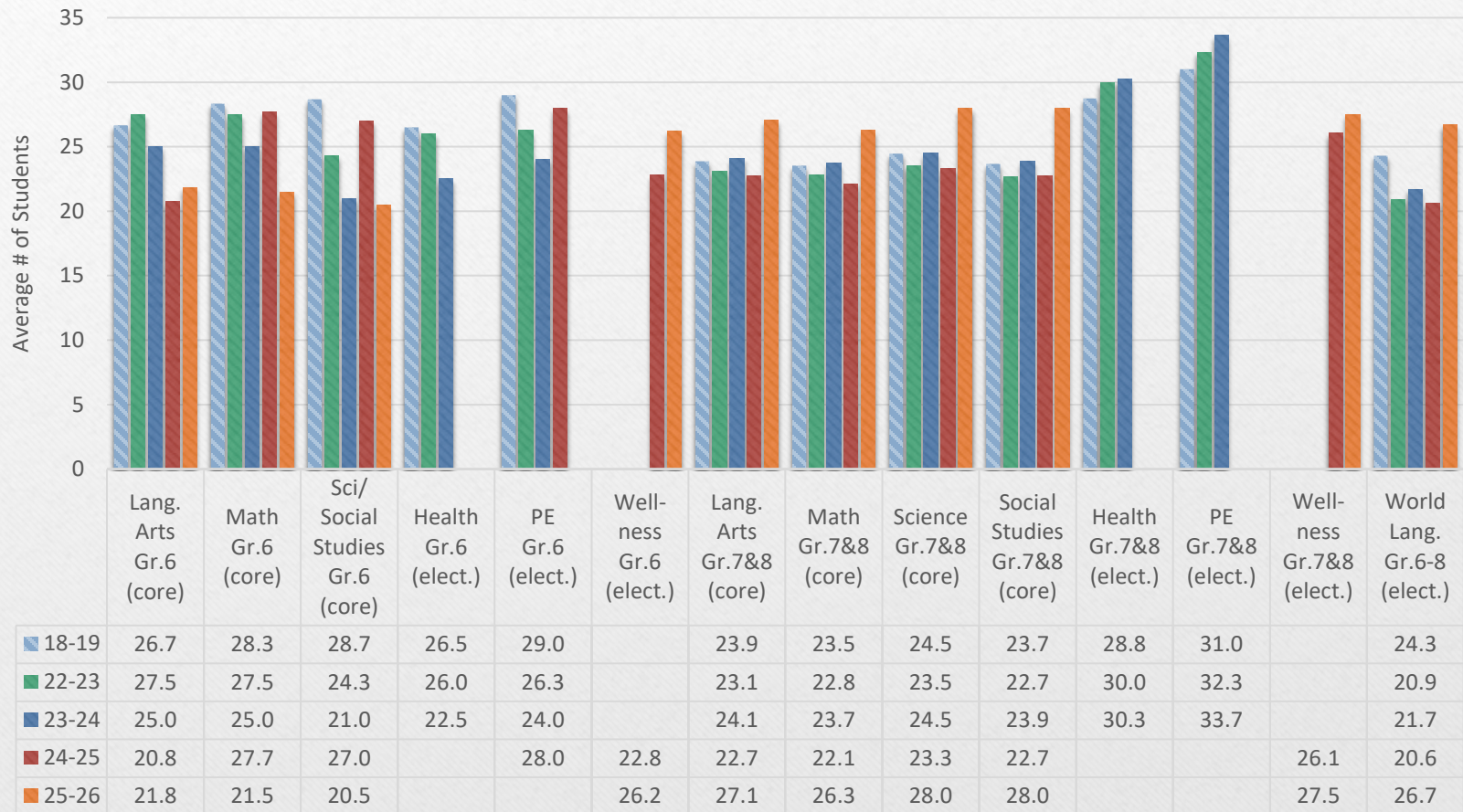
As of the first school day in October

Includes all home rooms at each site, including Site-Based classrooms at both Bellview (all years) & Helman (all but 18-19)

AMS Average Trimester 1 Class Size by Subject

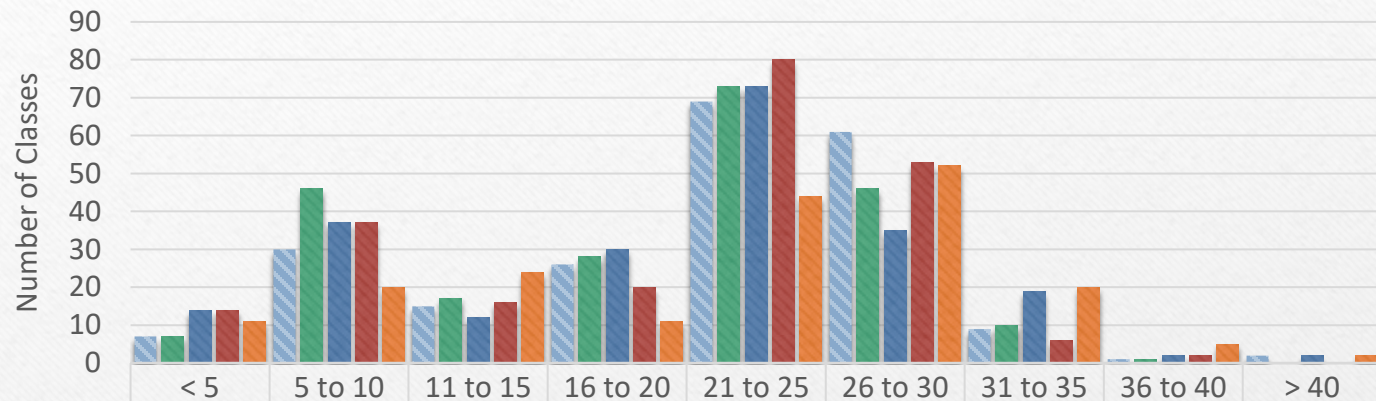
Multi-Year Comparison – October Enrollment

Class averages do not include courses taught in special education settings



As of the first school day in October

AMS Trimester 1 Class Size – Multi-Year Comparison



	< 5	5 to 10	11 to 15	16 to 20	21 to 25	26 to 30	31 to 35	36 to 40	> 40
2018-19 # Sections	7	30	15	26	69	61	9	1	2
2022-23 # Sections	7	46	17	28	73	46	10	1	0
2023-24 # Sections	14	37	12	30	73	35	19	2	2
2024-25 # Sections	14	37	16	20	80	53	6	2	0
2025-26 # Sections	11	20	24	11	44	52	20	5	2

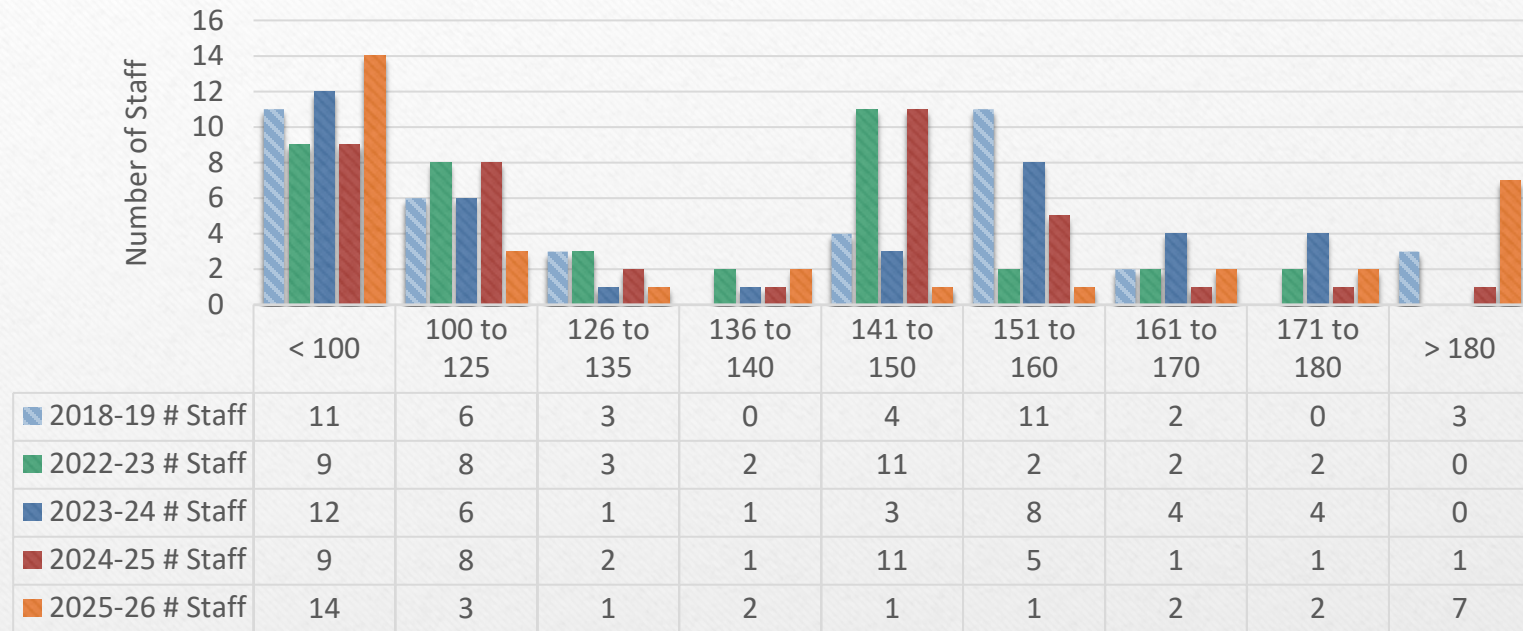
Section Size	2018-19	2022-23	2023-24	2024-25	2025-26
Average	21.4	19.4	19.9	19.7	21.3
Median	23	22	22	22	23
High	66 (Wind Ensemble [2 Teachers])	37 (Physical Education)	47 (Wind Ensemble)	40 (Wind Ensemble)	53 (Cadet Band [2 teachers])

Average = a calculated number. The sum of all class section sizes divided by the number of class sections.

Median = the middle number in an ordered list of teacher loads. It is the point where half the counts are above, and half are below.

As of the first school day in October

AMS Trimester 1 Teacher Student Loads – Multi-Year Comparison



Teacher Loads	2018-19	2022-23	2023-24	2024-25	2025-26
Average	117.4	113.4	114.5	115.1	120.7
Median	138	132	139	138	119
High	204 (Physical Education)	177 (Physical Education)	177 (Physical Education)	184 (Band, Wind Ensemble)	200 (Social Studies, Homeroom, Study Skills)

Average = a calculated number. The sum of all teacher load counts divided by the number of classroom teachers.

Median = the middle number in an ordered list of teacher loads. It is the point where half the counts are above, and half are below.

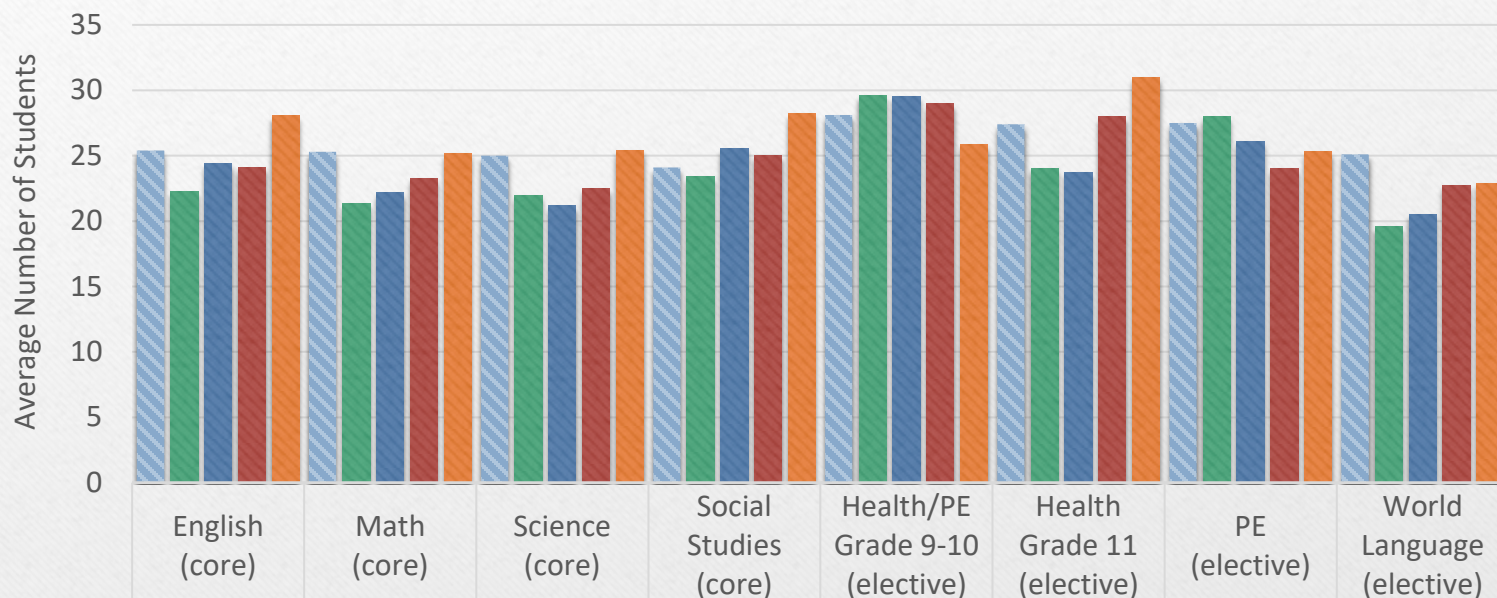
As of the first school day in October

AHS Average Semester 1 Class Size by Subject

Multi-Year Comparison – October

Subjects available to all grades 9-12 unless otherwise noted

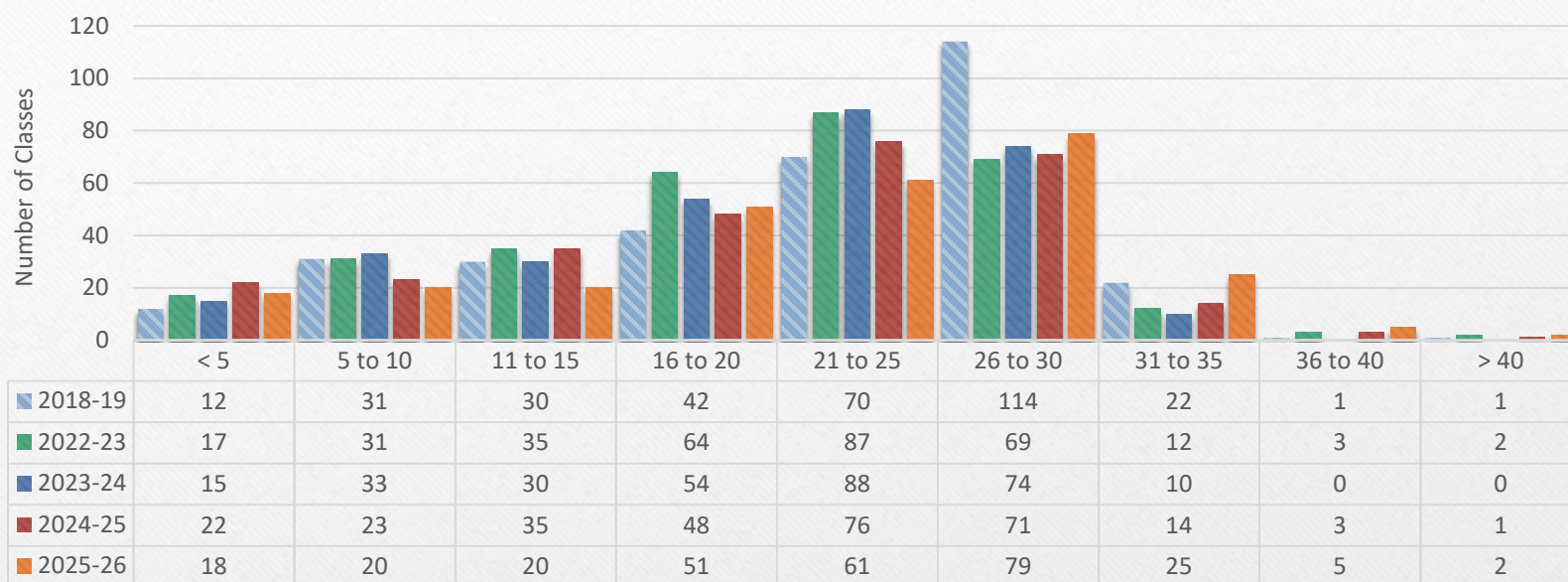
Class averages do not include courses taught in special education settings



	English (core)	Math (core)	Science (core)	Social Studies (core)	Health/PE Grade 9-10 (elective)	Health Grade 11 (elective)	PE (elective)	World Language (elective)
2018-19	25.4	25.3	25	24.1	28.1	27.4	27.5	25.1
2022-23	22.3	21.3	22.0	23.4	29.6	24.0	28.0	19.6
2023-24	24.4	22.2	21.2	25.6	29.5	23.8	26.1	20.5
2024-25	24.1	23.2	22.5	25.0	29.0	28.0	24.0	22.7
2025-26	28.0	25.2	25.4	28.2	25.9	31.0	25.3	22.9

As of the first school day in October

AHS Semester 1 Class Size – Multi-Year Comparison



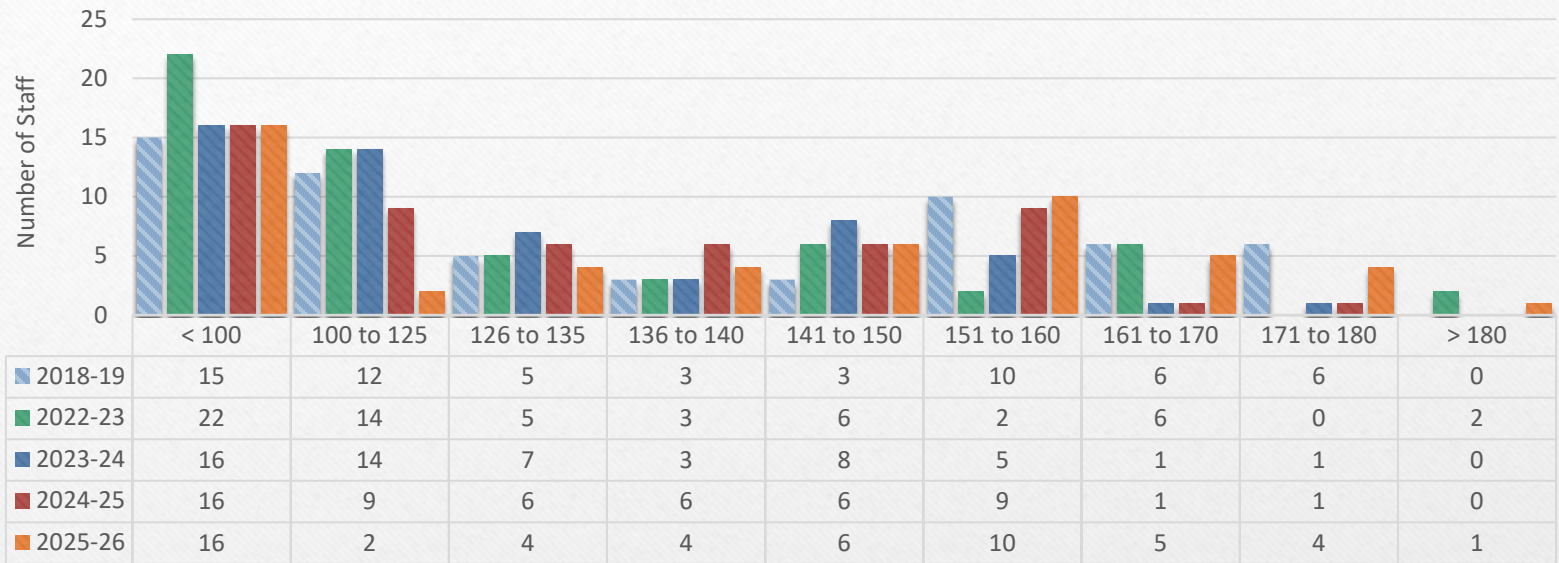
Section Size	2018-19	2022-23	2023-24	2024-25	2025-26
Average	21.8	20.2	19.8	20.3	21.6
Median	24	21	22	22	24
High	73 (Combination of Ind. Study courses. Next largest = 44 & 67 (Manufacturing series shared by 3 teachers) and 39 (band class).)	55 (Grizz Online Academy. The next largest non-independent study course is PE 1, at 36.)	34 (Wind Ensemble)	49 (A combination of Online & Ind. Study courses. The largest non-independent study course is Leadership, at 40.)	45 (Independent Study Credit Retrieval course. The largest non-independent study course is Leadership, at 43)

Average = a calculated number. The sum of all class section sizes divided by the number of class sections.

Median = the middle number in an ordered list of teacher loads. It is the point where half the counts are above, and half are below.

As of the first school day in October

AHS Semester 1 Teacher Student Loads – Multi-Year Comparison



Teacher Loads	2018-19	2022-23	2023-24	2024-25	2025-26
Average	121	109.3	109.7	110.8	118.2
Median	131	117	120	133	140.5
High	178 (Two teachers: PE/Wellness, and Manufacturing/ Mechanics)	284 (Grizz Online Academy duplicated students)	176 (PE)	172 (Business / Economics)	182 (English / Career & College Readiness)

Average = a calculated number. The sum of all teacher load counts divided by the number of classroom teachers.

Median = the middle number in an ordered list of teacher loads. It is the point where half the counts are above, and half are below.

As of the first school day in October

Ashland School District Transfer Analysis

October 2025

Non-Resident Students Attending on Transfer

TRANSFER TYPE	KG	Gr 1	Gr 2	Gr 3	Gr 4	Gr 5	Gr 6	Gr 7	Gr 8	Gr 9	Gr 10	Gr 11	Gr 12	Grand Total
2020-21 MID SUMMER MOVE IDT	0	0	0	1	2	0	2	0	0	1	0	0	0	6
2021-22 NON-RESIDENT IDT	6	2	0	2	3	0	1	0	1	2	0	3	0	20
PREVIOUS YEAR NON-RESIDENT IDT	8	1	2	0	1	2	2	1	2	2	1	1	0	23
PREVIOUS YEAR NON-RESIDENT OPEN ENROLLMENT	0	0	0	0	0	0	0	8	18	17	24	12	21	100
GRAND TOTAL	14	3	2	3	6	2	5	9	21	22	25	16	21	149

Projected Loss of Enrollment (IDT Related)

TRANSFER TYPE	KG	Gr 1	Gr 2	Gr 3	Gr 4	Gr 5	Gr 6	Gr 7	Gr 8	Gr 9	Gr 10	Gr 11	Gr 12	Grand Total
MID SUMMER MOVE IDT	0	0	0	1	2	0	2	0	0	1	0	0	0	6
OPEN ENROLLMENT	0	0	0	0	0	0	0	8	18	17	24	12	21	100
PROJECTED LOSS BY GRADE (Mid-Year & OE)	0	0	0	1	2	0	2	8	18	18	24	12	21	106
SCHOOL YEAR	37-38	36-37	35-36	34-35	33-34	32-33	31-32	30-31	29-30	28-29	27-28	26-27	25-26	
CUMULATIVE LOSS	106	106	106	106	105	103	103	101	93	75	57	33	21	

Move In Students on Transfer

TRANSFER TYPE	KG	Gr 1	Gr 2	Gr 3	Gr 4	Gr 5	Gr 6	Gr 7	Gr 8	Gr 9	Gr 10	Gr 11	Gr 12	Grand Total
OPEN ENROLLMENT MOVE INS	0	0	0	0	0	4	10	7	9	6	11	8	11	66
IDT MOVE INS	0	1	1	1	4	3	5	4	4	9	2	0	5	39
GRAND TOTAL	0	1	1	1	4	7	15	11	13	15	13	8	16	105

Accepted VS Released Transfers

TRANSFER TYPE	KG	Gr 1	Gr 2	Gr 3	Gr 4	Gr 5	Gr 6	Gr 7	Gr 8	Gr 9	Gr 10	Gr 11	Gr 12	Grand Total
ACCEPTED INTO ASD	6	2	1	2	3	0	1	0	1	2	0	3	0	21
RELEASED OUT OF ASD	4	5	4	4	4	1	1	5	2	2	4	4	2	42
NET	2	-3	-3	-2	-1	-1	0	-5	-1	0	-4	-1	-2	-21

ASD Accepted IDT by District

SCHOOL DISTRICT	KG	Gr 1	Gr 2	Gr 3	Gr 4	Gr 5	Gr 6	Gr 7	Gr 8	Gr 9	Gr 10	Gr 11	Gr 12	Grand Total
MEDFORD SD	4	0	0	1	3	0	0	0	0	1	0	1	0	10
CENTRAL POINT SD	0	1	0	0	0	0	0	0	1	0	0	1	0	3
THREE RIVERS SD	0	0	0	0	0	0	0	0	0	0	0	0	0	0
PHOENIX-TALENT SD	2	1	1	1	0	0	1	0	0	1	0	1	0	8
ROGUE RIVER SD	0	0	0	0	0	0	0	0	0	0	0	0	0	0
PINEHURST SD	0	0	0	0	0	0	0	0	0	0	0	0	0	0
GRAND TOTAL	6	2	1	2	3	0	1	0	1	2	0	3	0	21

ASD Released by District

SCHOOL DISTRICT	KG	Gr 1	Gr 2	Gr 3	Gr 4	Gr 5	Gr 6	Gr 7	Gr 8	Gr 9	Gr 10	Gr 11	Gr 12	Grand Total
CENTRAL POINT SD	0	0	0	0	0	0	0	0	0	0	0	0	0	0
MEDFORD SD	2	1	0	2	0	0	0	2	0	0	1	1	0	9
PHOENIX-TALENT SD	2	2	0	0	0	0	1	0	0	0	1	0	1	7
ONLINE PUBLIC SCHOOL	0	2	4	2	4	1	0	3	2	2	2	3	1	26
GRAND TOTAL	4	5	4	4	4	1	1	5	2	2	4	4	2	42