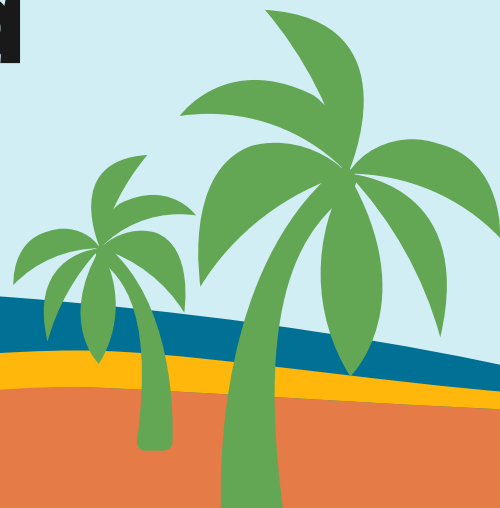




Denton ISD

Summer Learning Programs and BOY Data

2025





Sandy Brown
Executive Director for Elementary
Teaching & Learning

Dr. Lisa Thibodeaux
Executive Director for Secondary
Teaching & Learning



Purpose

Summer learning opportunities allow students to:

stay engaged,
avoid summer loss,
prepare for the coming school year,
accelerate learning, and/or
re-learn essential concepts and standards





Summer Programs

Pre K-5 Elementary Scholar Camp

Math 8 Course Recovery
Career and College Exploration

HS Summer Credit Recovery
HS Spanish I Acceleration
College Prep English and Math



PreK-Kindergarten Jr. Scholar Camp (Bilingual/ESL)



Days and Dates	20 days May 27 - June 26
Overview and Purpose	The PreK-K summer school program provided students with opportunities to continue developing language, literacy, and math skills by engaging in meaningful academic experiences that prepare them for the next grade level.
Locations and Enrollment	Enrollment: 309 students Alexander: 206 and Paloma Creek: 103



PreK-5 Elementary Scholar Camp



Days and Dates	16 days June 2 - 26
Overview and Purpose	Scholar Camp is an academic camp that provides summer support to students where data suggests a higher need for academic assistance. Students received targeted academic support in math and literacy through both whole group and small group instruction. Students have enrichment opportunities through community partnership with CoServ.
Locations and Enrollment	Enrollment: 571 students Alexander: 280 Students and Paloma Creek 307 Students
Results	<p>Comparison in math and reading achievement between Scholar Camp students vs. “statistical twins”, between 24-25 EOY vs. 25-26 BOY diagnostics.</p> <p>Reading: 119% gain for Scholar Camp attendees over “statistical twin” non-attendees 61.4% of students who attended Scholar Camp grew or maintained</p> <p>Math: 119% gain for Scholar Camp attendees over “statistical twin” non-attendees 47.8% of students who attended Scholar Camp grew or maintained</p>



Math 8 Course Recovery



Days and Dates	June 2 - 12; Mon-Thurs only (8 days)
Overview and Purpose	Because Math 8 is a state prerequisite for Algebra I, students who did not pass the course during the school year are required to successfully complete Math 8 Course Recovery in the summer or have to enroll in an additional math support elective in 9th grade.
Locations and Enrollment	Calhoun MS, Cheek MS, McMath MS, Myers MS, Navo MS, Rodriguez MS, Strickland MS. Students from Harpool MS and Crownover MS attend McMath MS.
Leadership	Ashley Ogal, Assistant Principal at Crownover MS
Results	<p><u>Program Implementation and Operational Impact</u> 64% of students requiring Math 8 Course Recovery successfully attended. Saved ~ 75% of a teaching position (Total program cost \$37,180) Plus an increase student elective choices in 9th grade for successful attendees</p> <p><u>Student Outcomes & Academic Impact</u> 109% gain for (invited) attendees over (invited) non-attendees At (diagnostic) baseline, the difference between attendees and non-attendees was equivalent to about 4 weeks of additional instruction.</p>



College and Career Exploration



Days and Dates	June 2 - 12; Mon-Thurs only (8 days)
Overview and Purpose	Career & College Exploration Camp is a summer program that introduces middle school students to high school pathways and college readiness through hands-on activities and guest-led sessions. The camp also fulfills the requirements of TEC 28.016 by providing students with early exposure to career and college exploration standards.
Locations and Enrollment	<p>227 enrolled students across all DISD middle schools.</p> <ul style="list-style-type: none">• 88 enrolled in face-to-face sections at Cheek, Strickland, Myers, and McMath• 139 enrolled in synchronous online sections
Results	<p>89% of enrolled students successfully met Career and College Exploration requirements.</p> <p>Starting in the 2025 - 2026 school year, all students will meet the state's Career and College Readiness standards through a middle school CTE course. Offering the summer option this year gave families flexibility and was helpful for students who had already selected an 8th grade elective.</p>

HS Summer Credit Recovery



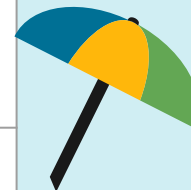
Days and Dates	June 2 - June 27
Overview and Purpose	For students who have taken but did not pass one or more semesters of a core course required for graduation. Online course delivery uses a diagnostic-based model to identify TEKS gaps and allows students to recover the content they missed. Students can enroll for up to 2 semesters at a time and can take up to a total of 3 semesters total throughout the program. The maximum credit a student will be awarded in the program is 1.5 credits (equal to 3 semesters). Enrollment is flexible, and students may start a new semester course at any time during the program through June 19.
Enrollment	1,072 students requesting one or more course By grade level: Rising 10th: 283; Rising 11th: 394, Rising 12th: 391 By campus: Braswell 12%, Denton 11%, Guyer 7%, LaGrone .4%, Ryan 15%
Results	839 students who attempted .5 or more earned at least .5 (78% success) 1,345 .5 credits were earned out of 2,279 .5 credits desired (59% success) 1,140 seats in the year = 7-8 teaching positions (\$331,000 savings) Registrations down by 26.2% from 2024 to 2025



HS Spanish I Original Credit



Days and Dates	June 2- 26; Monday-Thursday 8:30 AM - 11:30 AM (60 hours of instructional time + homework)
Overview and Purpose	New for Summer 2025. Students enrolling in the Summer Spanish I course receive the same full-year Spanish I curriculum (1.0 credits) that is offered during the school year. This course follows the district curriculum and utilizes the same instructional resources but moves at an accelerated pace. Students who successfully complete the course are prepared to enroll in Spanish II in the upcoming school year. This course is appropriate for students who have not yet taken Spanish I but would like to enroll in Spanish II or Spanish II Honors in the upcoming school year or students wanting credit recovery in Spanish I. (Essential for students moving in from another state w/out world language credits.)
Locations and Enrollment	Ryan High School only (open to all high school students) 15 students (closed registration once full)
Results	4 students earned full Spanish I original credit. Additional students learned foundational skills to assist them this school year.



College Prep English and Math



Days and Dates	June 2 - 12; Mon-Thurs only (8 days) w/ additional at-home work (64 hours of instructional time)
Overview and Purpose	<p>Successful completion of one of these courses (i.e., earning at least a 70 and not missing more than 1 day of in-person instruction) resulted in the award of 1.0 elective math or elective English credits and exempted students from having to take the TSIA 2 prior to attending NCTC.</p> <p>For this year only. TEA indicated that beginning in 2025-2026, school districts may only use TEA-approved College Prep courses for English and Math. NCTC did not submit a course for approval. This program was designed to bridge the need for one year.</p>
Locations and Enrollment	<p>Denton HS- College Prep English: 6 eligible students enrolled</p> <p>Braswell HS- College Prep English: 2 eligible students enrolled</p> <p>Braswell HS- College Prep Math: 4 eligible students enrolled</p>
Results	<p>4 students earned credit for College Prep English (met TSI requirements for NCTC)</p> <p>2 students earned credit for College Prep Math (met TSI requirements for NCTC)</p>



Purpose

BOY Diagnostic Testing

**Establishes a clear starting point
for each student
by identifying strengths, gaps, and readiness
for grade-level learning and
helps teachers tailor instruction,
group students effectively,
and set appropriate goals.**

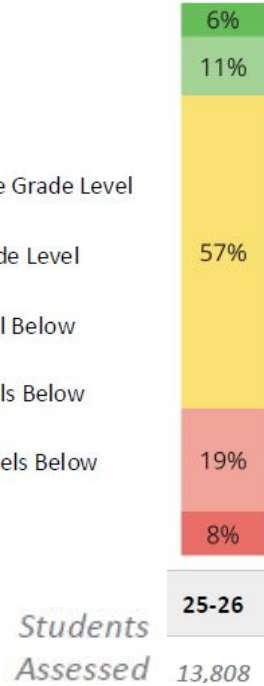


Elementary - iReady

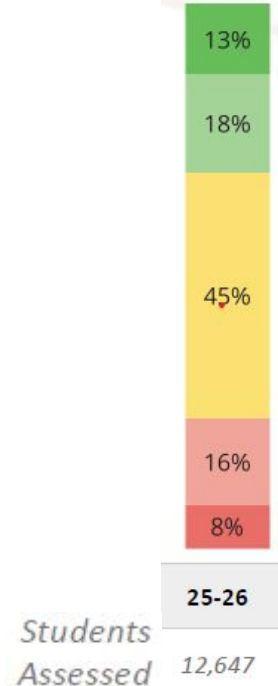


Percentage of students that have met the end of year standard on the beginning of the year assessment.

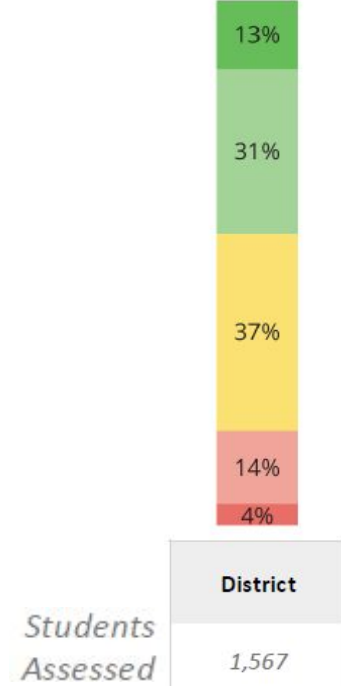
- Mid or Above Grade Level
- Early On Grade Level
- 1 Grade Level Below
- 2 Grade Levels Below
- 3+ Grade Levels Below



Math Diagnostic



Reading Diagnostic



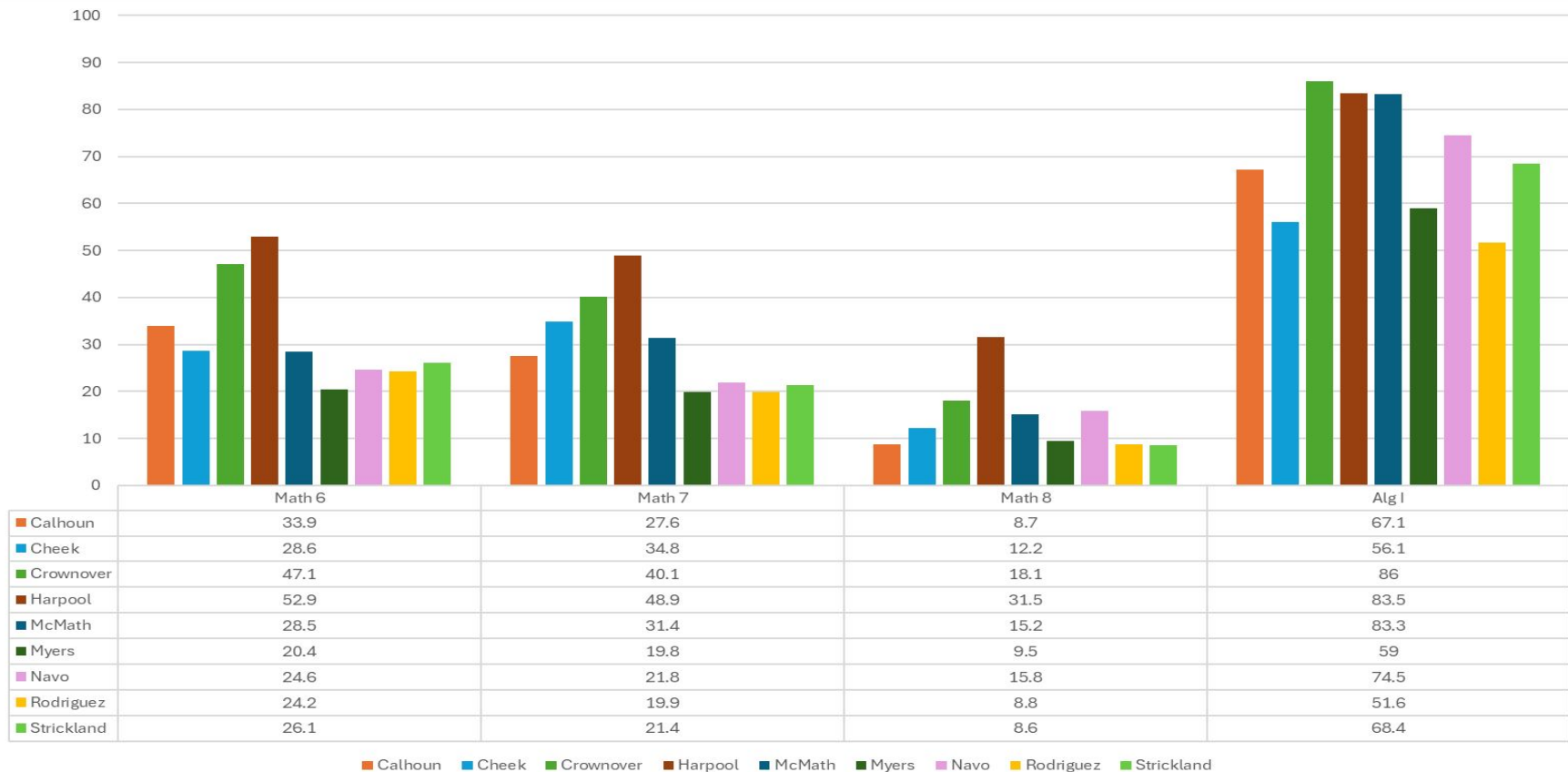
Spanish Diagnostic



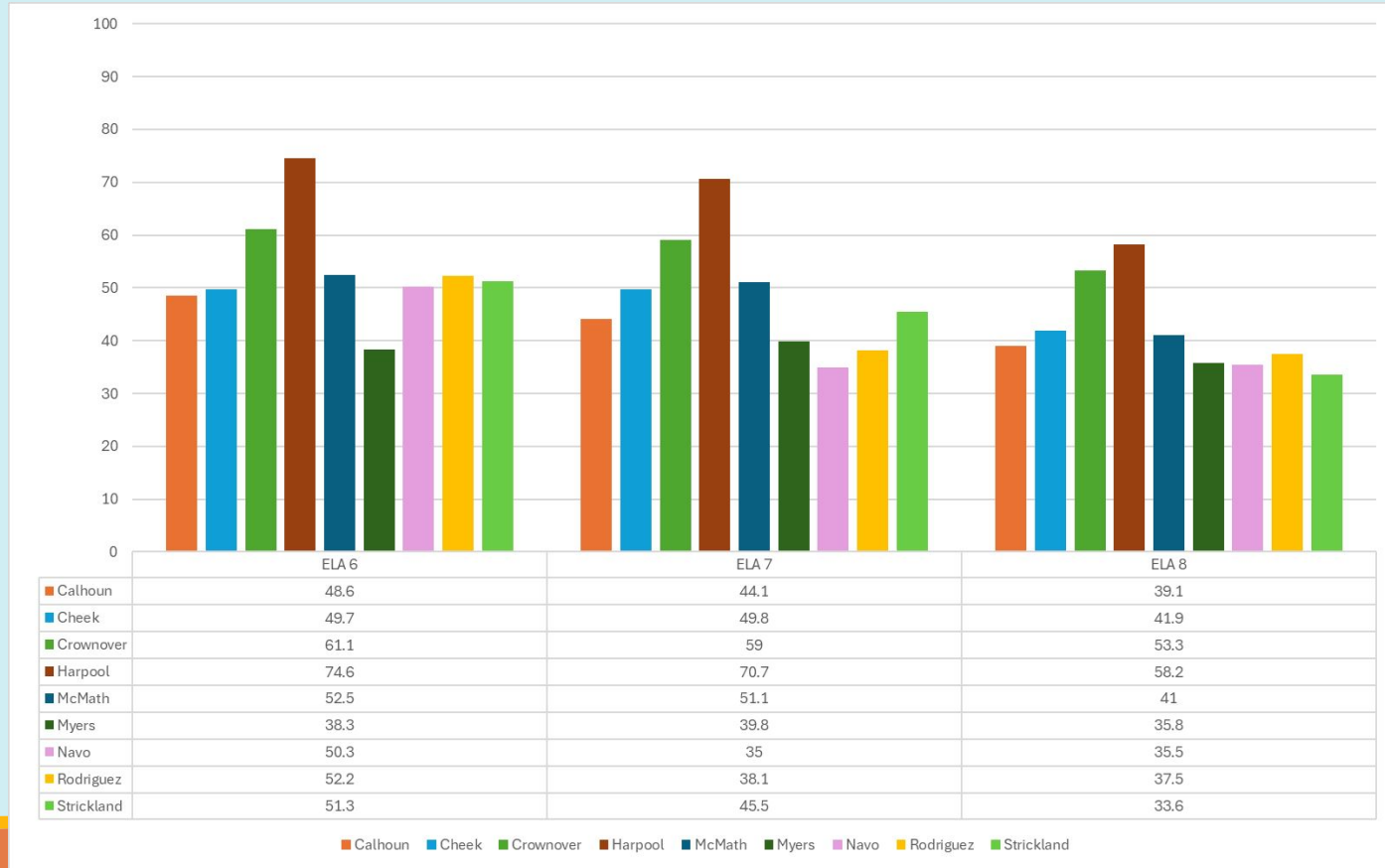
MS/HS - Math & ELA - Completion Rates - IXL LevelUp Diagnostic

	Completion Rates									
	Math 6	Math 7	Math 8	Alg I	ELA 6	ELA 7	ELA 8	HS Alg I	Eng I	Eng II
Calhoun	100	99.6	96.7	100	96.9	94.4	90.1			
Cheek	96.3	95.9	92.1	95.6	95.6	95.6	91.1			
Crownover	97.7	99.7	98.3	97.0	97.9	98.7	99.6			
Harpool	98.7	97.9	97.6	96.7	98.4	97.3	95.7			
McMath	98.5	98.2	98.8	100	98.5	98.2	98.1			
Myers	98.4	92.7	90.5	96.7	97.6	95.6	95.7			
Navo	91.5	90.7	93.2	100	90.5	85.2	87.0			
Rodriguez	98.5	98.5	97.1	100	99.0	97.6	98.5			
Strickland	95.8	93.1	95.3	97.8	97.0	94.3	93.8			
Braswell HS								87.4	88.5	87.3
Denton HS								89.2	81.5	82.1
Guyer HS								93.6	96.6	88.6
Ryan HS								85.3	92.1	74.0

MS Math - Achievement - IXL LevelUp Diagnostic



MS ELA - Achievement - IXL LevelUp Diagnostic



HS Math & ELA - Achievement - IXL LevelUp Diagnostic

