



Bloomfield Public Schools

2025-2026

District Safe School Climate Plan

April 7, 2026

Dr. Tracy Youngberg, Superintendent of Schools
Ms. Lynette Easmon, Board of Education Chair

“Building Our Legacy One Student At A Time”





Bloomfield Public Schools

2025-2026

CSDE/Legislative Checklist (Public Act 23-167):

State Guidance Document:

- BPS Adopted #5131.911 on 11/12/24 ✓
- BPS Adopted Restorative Practices Policy 5144.12 on 6/3/25 ✓
- Superintendent-School Climate Coordinator ✓
- Each school currently has a Climate Specialist (Stipends 25-26) ✓
- Responsive Classroom Training K-8 & Soft Launch ✓
- School Level Climate Committees ✓
- Climate Survey biennially (Students, Staff & Families)
- Develop Climate Improvement Plans (Facilities, PD, Programming, etc.)
*Informally started the process at each school

“Building Our Legacy One Student At A Time”

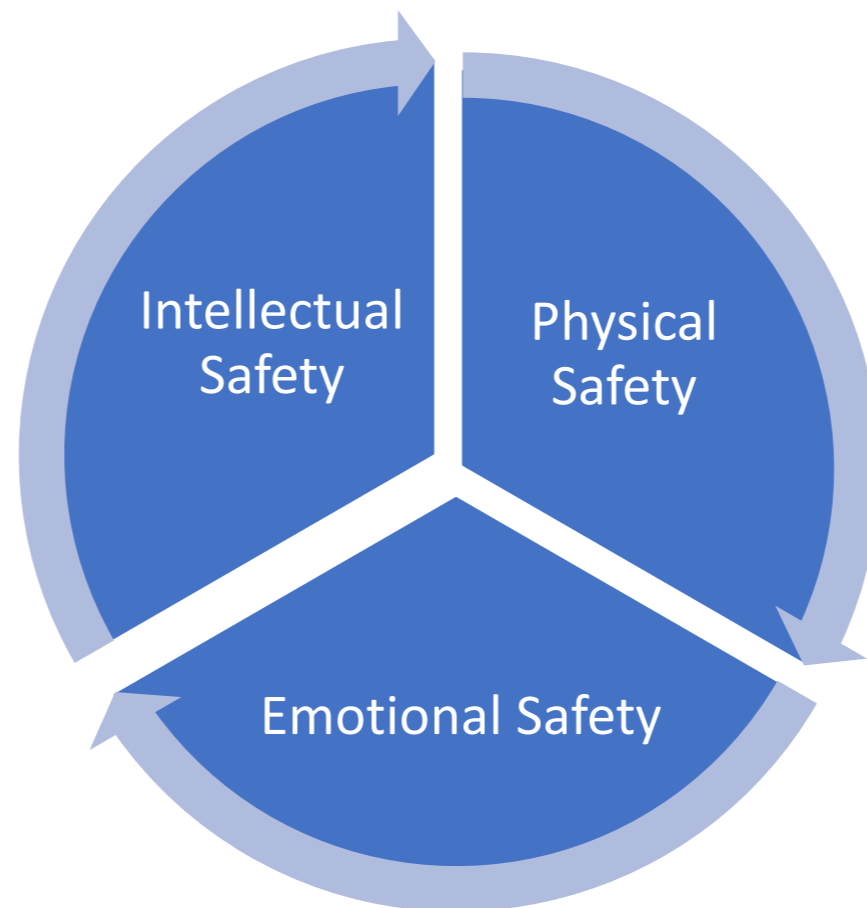


District Safe School Climate Plan, 2025-2028

Bloomfield Public Schools recognizes that a safe and productive school climate is necessary for:

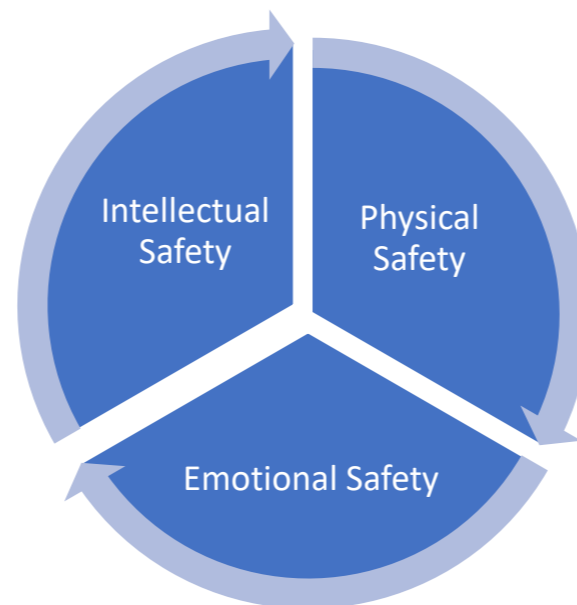
- **Our students to meet academic and social/emotional goals**
- **Our staff members to maximize their impact, and**
- **Our families to feel like partners in their child's educational journey.**

We are working to develop school climates that ensure physical, emotional and intellectual safety for all members of the learning community.



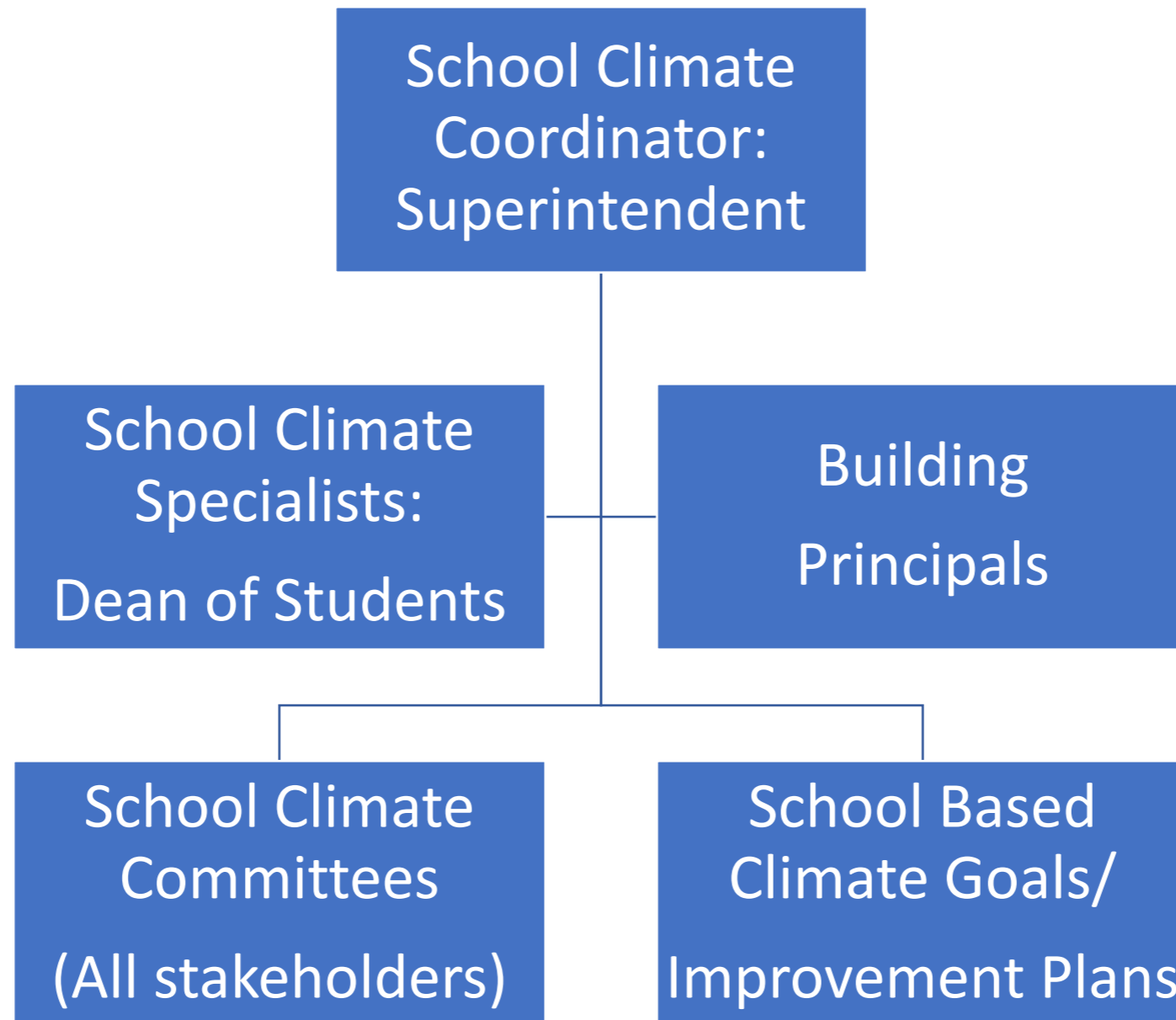
District Safe School Climate Plan, 2025-2028

Physical Safety	Emotional Safety	Intellectual Safety
<p>Our commitment to ensuring our schools and workplaces are physically safe in terms of facilities infrastructure, accessibility and emergency protocols. A focus on physical safety ensures students and staff within our schools are free from physical harm or violence.</p>	<p>Our commitment to ensuring our schools and workplaces are environments where individuals feel safe to express emotions and vulnerability without judgment or punishment. A focus on emotional safety ensures students and staff feel secure, valued and respected as individuals.</p>	<p>Our commitment to ensuring all learners feel comfortable to think, ask questions, take risks in learning and view mistakes as opportunities to grow versus failures. Productive learning environments rely on intellectual safety.</p>



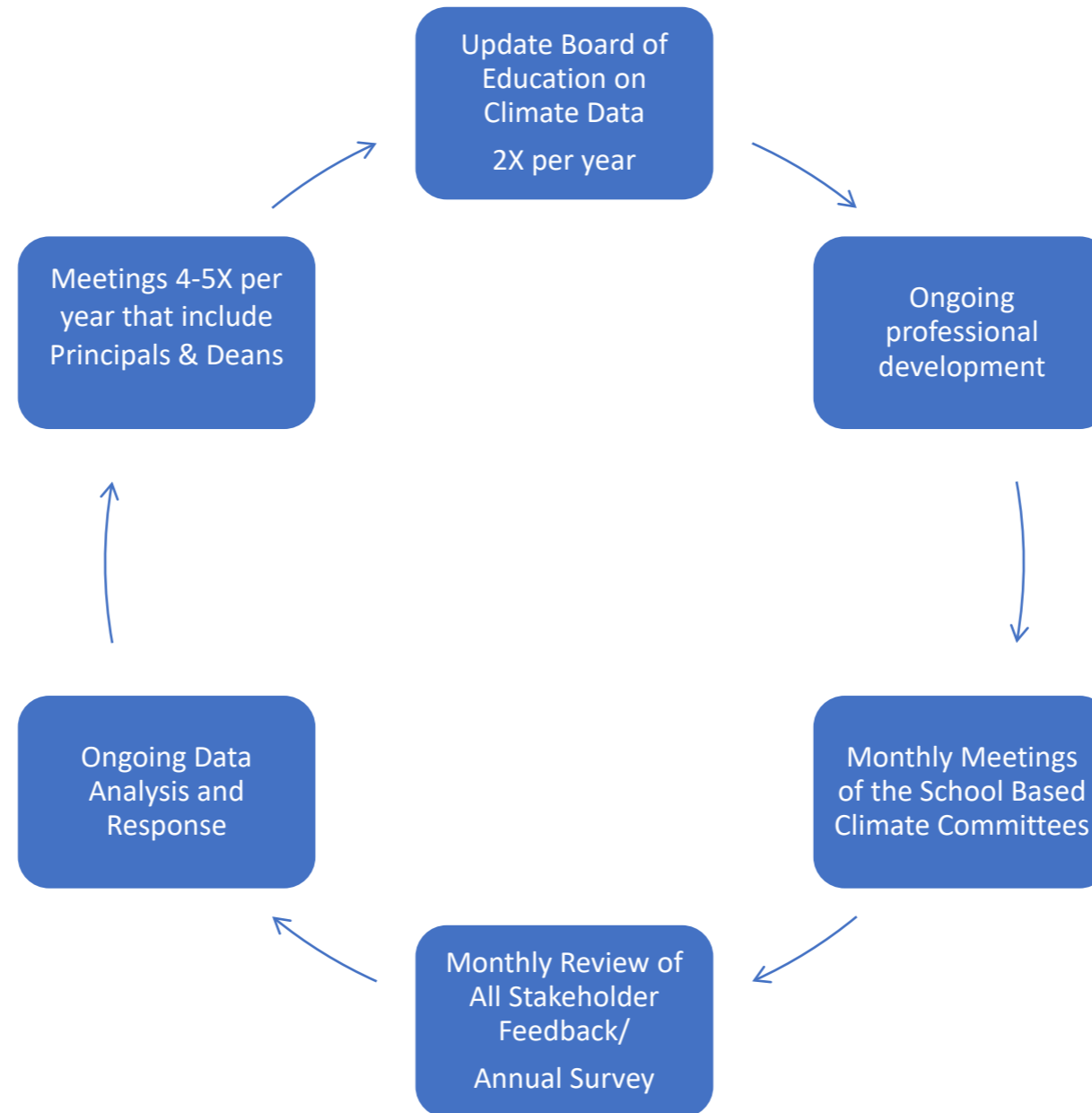
District Safe School Climate Plan, 2025-2028

Safe School Climate Staffing Structure:



District Safe School Climate Plan, 2025-2028

Safe School Climate Meeting Structure & Data Review





Bloomfield Public Schools

2025-2026

Ways We Gather Climate & Safety Data

Monthly Staff
&
Leadership
Meetings

Monthly PTO
Meetings
&
District Parent
Advisory
Council
(4-6x per year)

Monthly
meetings w/
Bargaining
Units

Discipline
Referrals, ISS,
OSS &
Expulsion Data

Phone Calls,
Emails & Social
Media Posts

Practice Drills
(Evacuation,
Lock Down &
Shelter in
Place)

Climate Survey
Information

Student
Support
Services Needs
Assessment

25-26
BEA Blitz

HR Visits

School Facilities
Work Orders

“Building Our Legacy One Student At A Time”





Bloomfield Public Schools

2025-2026

**Questions, Comments,
More Information Needed?**

“Building Our Legacy One Student At A Time”

