



Oak Park Elementary School District 97

A photograph of a school hallway. In the center, a teacher and four students are gathered around a table, engaged in a discussion. The hallway is brightly lit with recessed ceiling lights. On the right, there is a row of white lockers with blue accents. A sign on the wall reads "COLLABORA".

SCOPE REVIEW

Potential Summer 2023 Improvements

December 19, 2022

STR

OVER FIFTY YEARS OF ENHANCING NOW ENVISIONING FUTURES



PRESENTATION OUTLINE

- 1. BID RELEASE 1** - October 28, 2022
 - Brooks Middle School
 - Holmes Elementary School
 - Longfellow Elementary School
 - Mann Elementary School
- 2. BID RELEASE 2** - December 22, 2022
 - Longfellow Elementary School
 - Beye Elementary School
 - Brooks Middle School
- 3. SUSTAINABILITY SUMMARY**
- 4. SUMMARY**
- 5. QUESTIONS?**

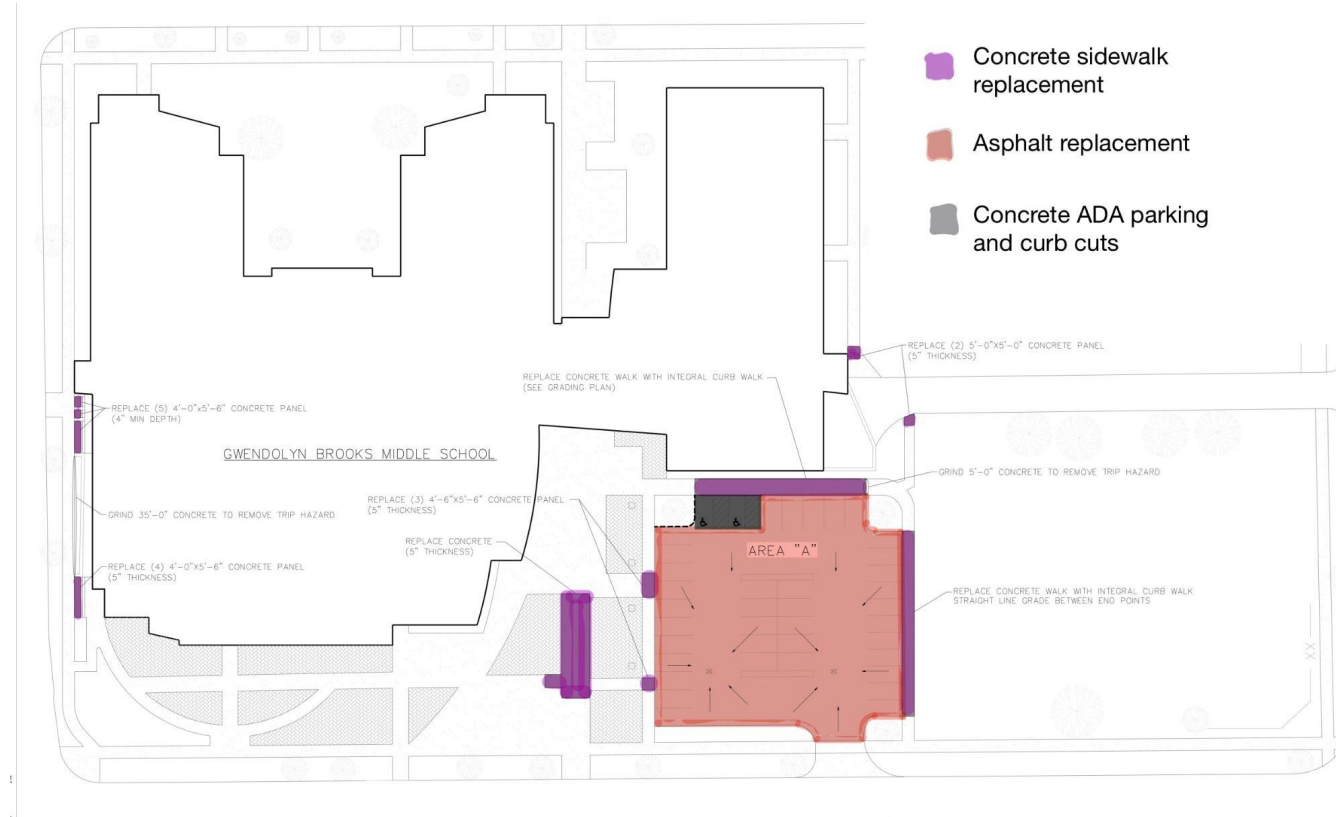
BID RELEASE 1

SCOPE DESCRIPTION



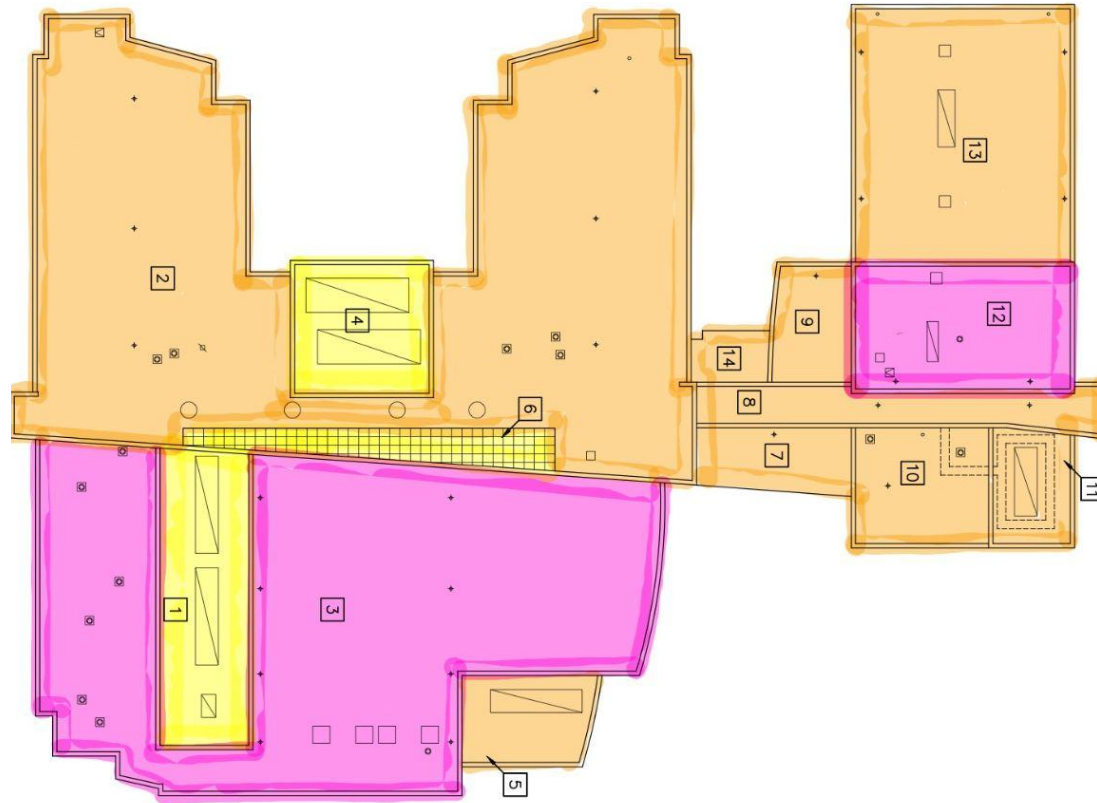
1. BID RELEASE 1 - BROOKS


Hardscape Improvements



1. BID RELEASE 1 - BROOKS

Roofing Improvements



-  New roof or replace in 11-20 years
-  Replace in 6-10 years
-  Replace in 2-3 years
-  Replace in 1 year
-  Scheduled for replacement in Summer 2023 - Alternate Bid

1. BID RELEASE 1 - BROOKS

Electrical System Improvements

In parity with improvements completed at Julian Middle School in Summer 2022, the following improvements are planned for Brooks:

- **Exterior Emergency Lighting** Replacement
- **Fire Alarm** Replacement
 - Throughout entire building and at mechanical equipment on roof.
- **Interior Lighting Replacement** to LED fixtures
 - Throughout entire building excluding the auditorium, gymnasium, auxiliary gymnasium
- **Security System** Installation at 1st and 2nd floors



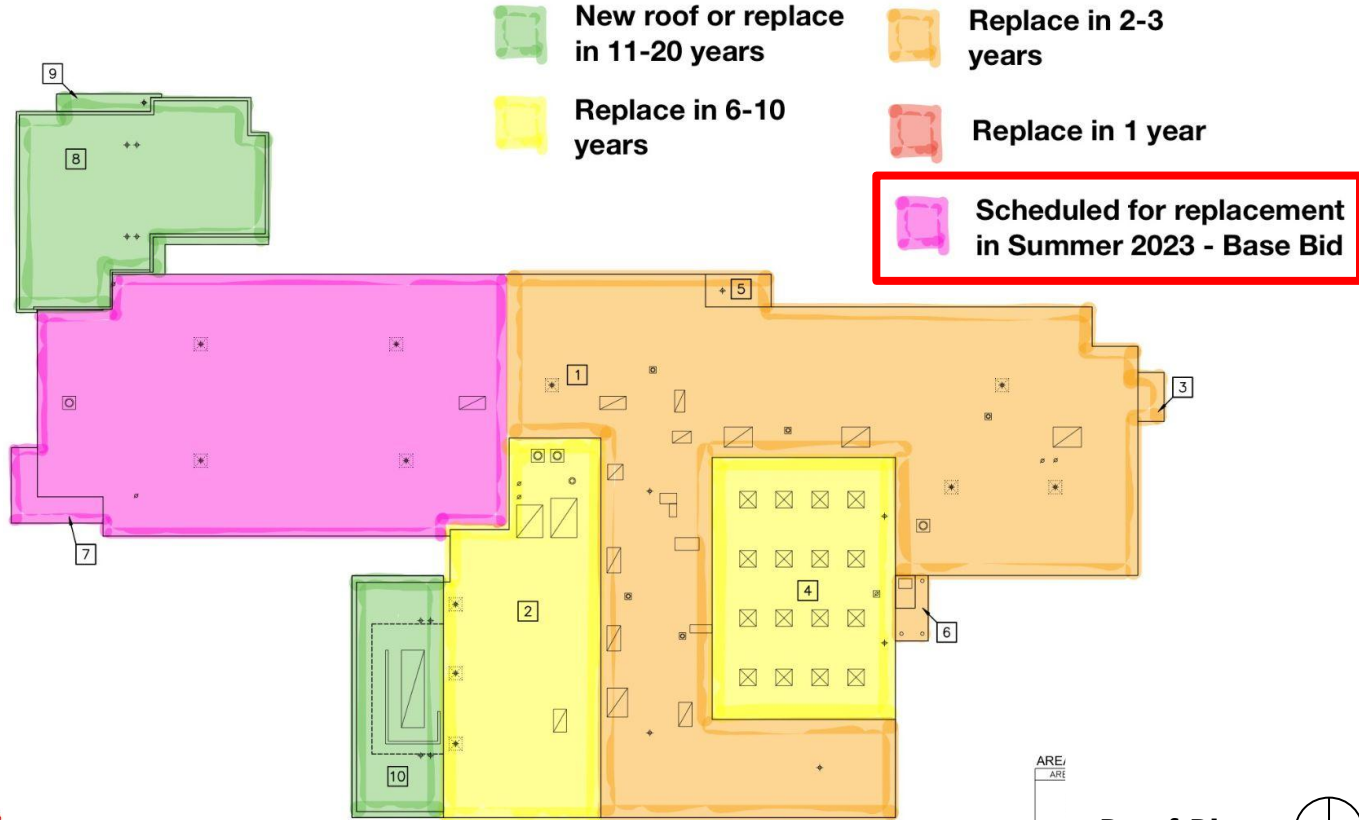
Sample Fire Alarm Plan



Sample Lighting Plan

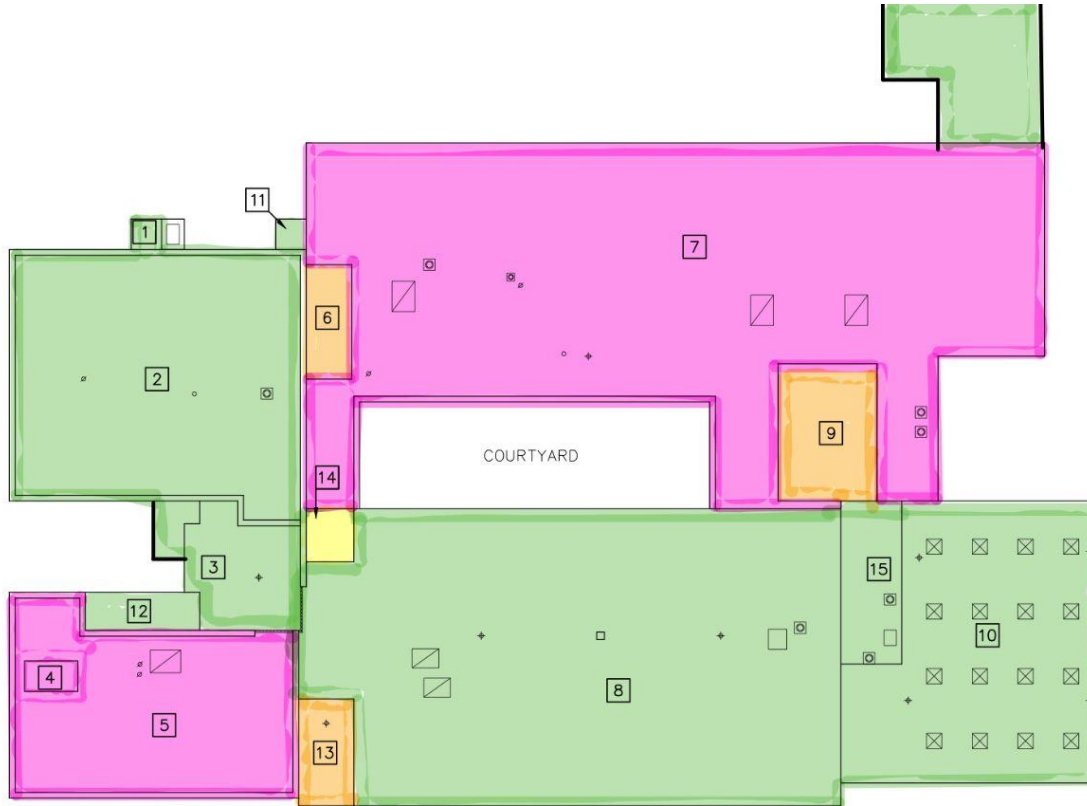
1. BID RELEASE 1 - Holmes

Roofing Improvements




1. BID RELEASE 1 - Longfellow

Roofing Improvements



-  New roof or replace in 11-20 years
-  Replace in 6-10 years
-  Replace in 2-3 years
-  Replace in 1 year

 **Scheduled for replacement in Summer 2023 - Base Bid**

Life Safety "b" Item

1. BID RELEASE 1 - Longfellow

In parity with improvements completed at other elementary schools over the past several summers, the following improvements are planned for Longfellow:

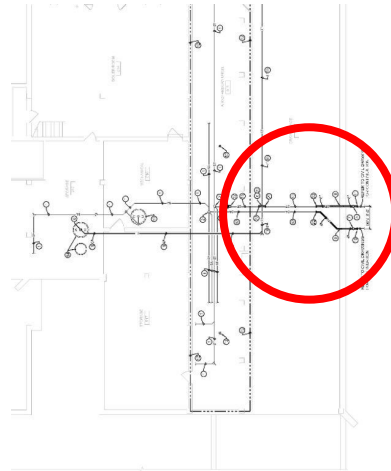
- Replace **mechanical units** and **exhaust fans**
 - (3) Multi-Zone units and associated condensing units
 - (1) Air-cooled condensing unit and coil

1. BID RELEASE 1 - Mann

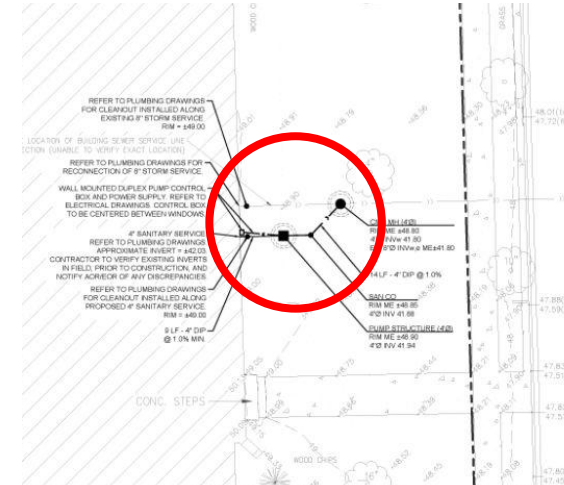
Sewer Improvements

To address backup flooding during rain events in the Mann maintenance tunnel, the following plumbing and civil work is proposed:

- Installation of a flood control pump structure outside building
- Interior piping removed and replaced for separate sanitary and storm piping within the building
- Sanitary to be reconnected to the storm line in a new manhole outside the building
- New cleanouts to be installed and all floor drains within maintenance tunnel to be routed out and cleaned.



Plumbing Plan



Civil Plan

BID RELEASE 2

SCOPE DESCRIPTION



1. BID RELEASE 2 - Longfellow

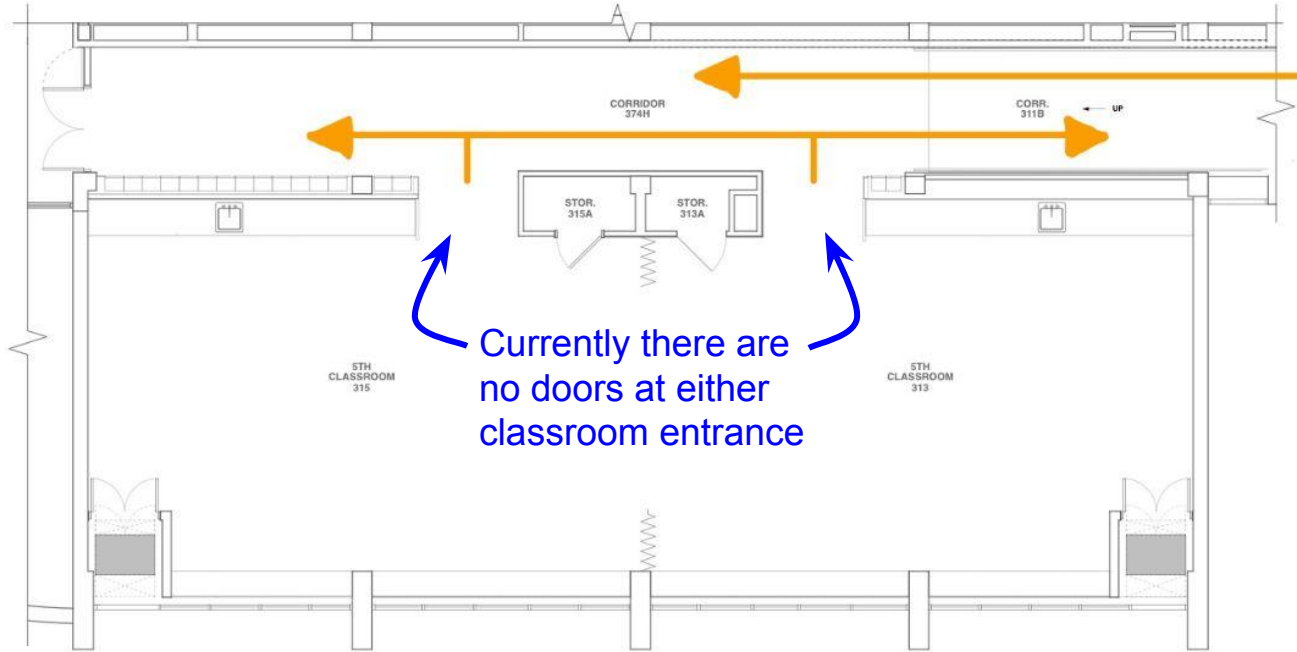
Facility Maintenance Improvements

In parity with improvements completed at other elementary schools over the past several summers, the following improvements are planned for Longfellow:

- ***Paving replacement*** at parking area and sidewalk transitions
- ***Stair floor finishes*** - replace VCT with Rubber flooring per current D97 standards.
- Minor ***toilet partition replacement***
- Exterior and Interior ***emergency lighting***
- Replace ***interior lighting*** with LED fixtures
- Replace antiquated ***electrical panelboards and enclosure***

2. BID RELEASE 2 - BEYE

Doors at Penthouse Classrooms

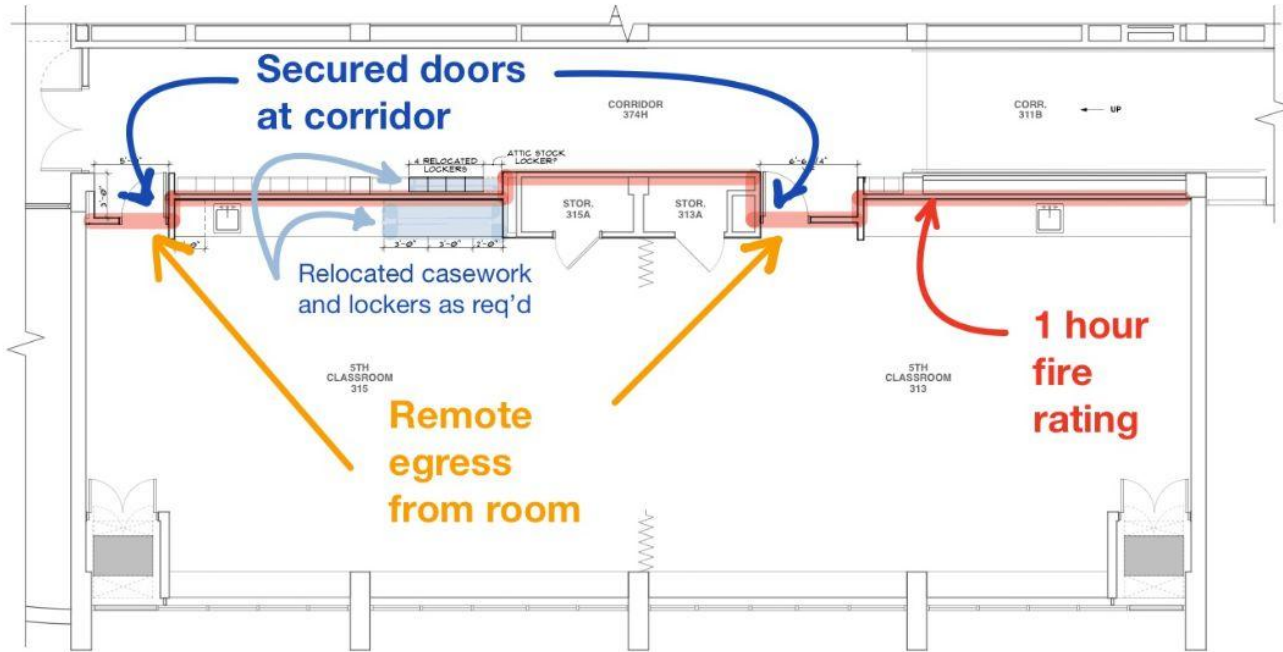


Egress paths
prohibit security
doors in corridor

Currently there are
no doors at either
classroom entrance

2. BID RELEASE 2 - BEYE

Doors at Penthouse Classrooms



GENDER NEUTRAL TOILET ROOMS

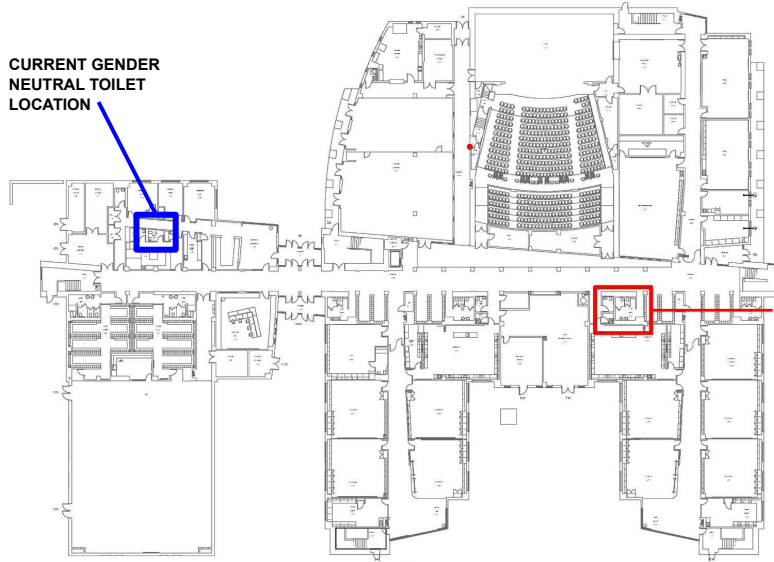
- A **student group** requested resources to research solutions for gender neutral toilet rooms to create a more **equitable** and **inclusive** school facility.
- Currently a single gender neutral toilet is remote and awkwardly located in the nurse's office at the 1st floor of a 4-story building.
- Proposed solution is to provide gender neutral stalls in such a way as to:
 - Maintain code-required fixture counts.
 - Distribute facilities more evenly within the building.
 - Address privacy needs.
 - Address observational needs.
 - Adhere to accessibility requirements.
- D97 has secured a state grant to offset the majority of the cost.

2. BID RELEASE 2 - BROOKS

Gender Neutral Toilet Rooms

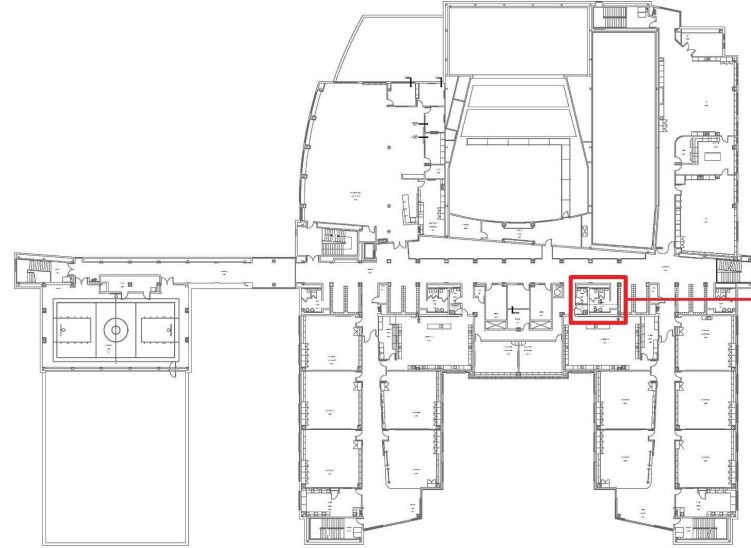
4-Story Building

CURRENT GENDER NEUTRAL TOILET LOCATION



PROPOSED GENDER NEUTRAL TOILET LOCATION

First Floor Plan



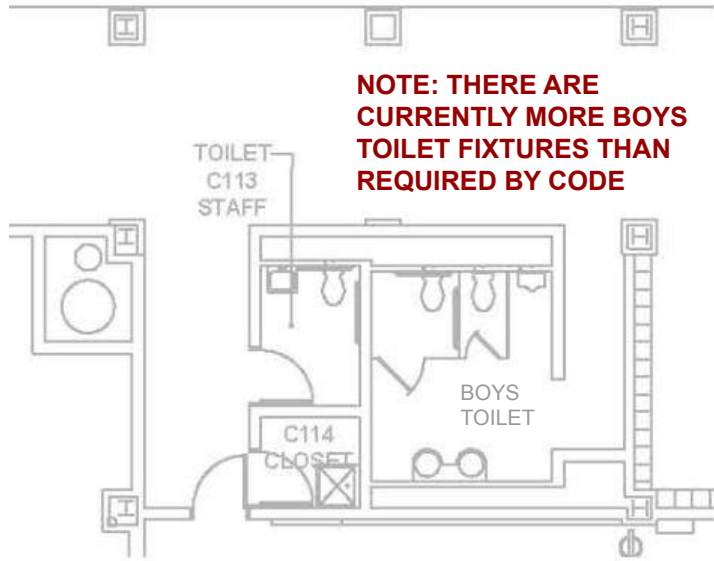
PROPOSED GENDER NEUTRAL TOILET LOCATION

Third Floor Plan



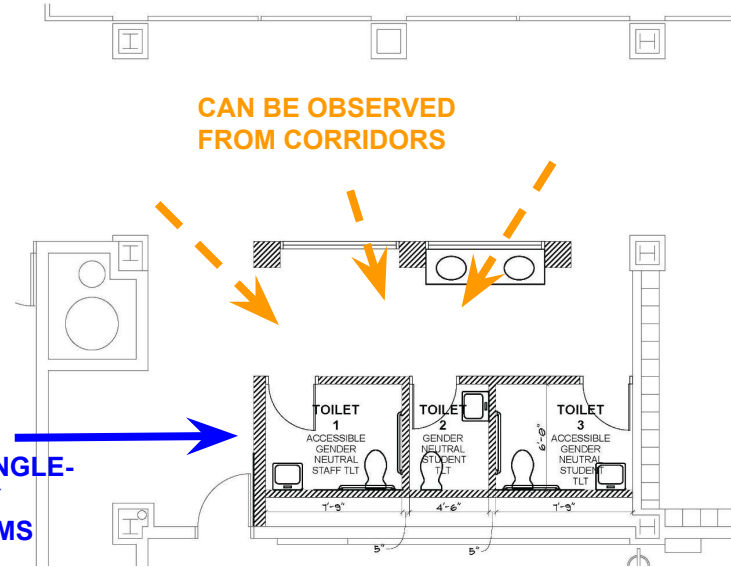
2. BID RELEASE 2 - BROOKS

Gender Neutral Toilet Rooms



EXISTING TOILET ROOM PLAN
@ 1st AND 3rd FLOORS

(3) GENDER NEUTRAL SINGLE-OCCUPANCY TOILET ROOMS (1 STAFF; 2 STUDENT)



PROPOSED GENDER NEUTRAL TOILET ROOM PLAN @ 1st AND 3rd FLOORS

SUSTAINABILITY SUMMARY



3. SUSTAINABILITY SUMMARY

BROOKS Middle School

- Replace light fixtures with **energy efficient LED lighting**.
 - Lighting controls will allow for additional energy efficiency with daylighting accommodations and occupancy sensors.
- Replace 2 areas of roof (*Alternate Bid*)
 - Provides **increased insulation** thickness of 5.2" minimum
 - roofing is white in color **reducing heat island effect**.

HOLMES Elementary School

- Replace 1 area of roof
 - Provides **increased insulation** thickness of 5.2" minimum
 - roofing is white in color **reducing heat island effect**.

3. SUSTAINABILITY SUMMARY

LONGFELLOW Elementary School

- **Replace 4 areas of roof**
 - Provides **increased insulation** thickness of 5.2" minimum
 - roofing is white in color **reducing heat island effect**.
- **Replace 4 RTUs** that are past service life
 - **increase energy efficiency** with improved controls
- **Replace light fixtures** with **energy efficient LED lighting**.
 - Lighting controls will allow for additional energy efficiency with daylighting accommodations and occupancy sensors.
- Interior and exterior **emergency lighting replaced** with **energy efficient LED lighting**.



QUESTIONS?