

Intermediate School District 287





The **mission** of Intermediate District 287 is to be the premier provider of innovative specialized services to ensure that each member district can meet the unique learning needs of its students.

Strategic Plan Focus Areas



**ACHIEVING
ACADEMIC SUCCESS**



**CULTIVATING EQUITY
& INCLUSION**



**PROMOTING
SOCIAL-EMOTIONAL
LEARNING (SEL)**

1965

Started as a way to leverage economies of scale for Career and Technical Education (CTE) and Special Education.

Four

There are four Intermediate School Districts within the state of MN. ***District 287 as an entity, is an extension of its member districts.***

Twelve

District 287 has 12 member districts, which are *Osseo, Orono, Robbinsdale, St. Louis Park, Richfield, Eden Prairie, Edina, Wayzata, Hopkins, Brooklyn Center, Minnetonka, and Westonka*



What is the difference between Edina's Special Education Programs and District 287 Special Education Programs?

- **Federal Setting I** - special education services are provided outside of the regular education classroom for less than 21 percent of the school day.
- **Federal Setting II** - special education services are provided outside of the regular education classroom for 21 - 60 percent of the school day.
- **Federal Setting III** - special education services are provided outside of the regular education classroom greater than 60 percent of the school day.
- **Federal Setting IV** - separate public school only for students in special education.



Education Centers

North Education Center

- Located in New Hope
- Special education programs that serve grades K-12 and has an Alternative Learning Center (ALC)
- Student Enrollment: 239

Edina: 4 students

West Education Center

- Located in Minnetonka
- Serves grades 9-12, young adults ages 18-22, and has an Alternative Learning Center (ALC)
- Enrollment: 132

Edina: 6 students

Ann Bremer Education Center

- Located in Brooklyn Park
- Serves grades 9-12 and young adults ages 18-22
- Enrollment: 110

Edina: 0

South Education Center

- Located in Richfield
- Serves grades K-12 and has an Alternative Learning Center (ALC)
- Enrollment: 192

Edina: 26 students

Other Programs and Services

Northern Star Online (NSO)

- Provides over 90 supplemental high school courses to over 50 member and nonmember districts. *Edina 186 students*

Care and Treatment

- Provides educational services in 10 sites including, residential, day treatment, hospital, or correctional settings that are located within our member districts. *Edina - PrairieCare (partial hospitalization)*

Career and Technical Education (CTE) Programs

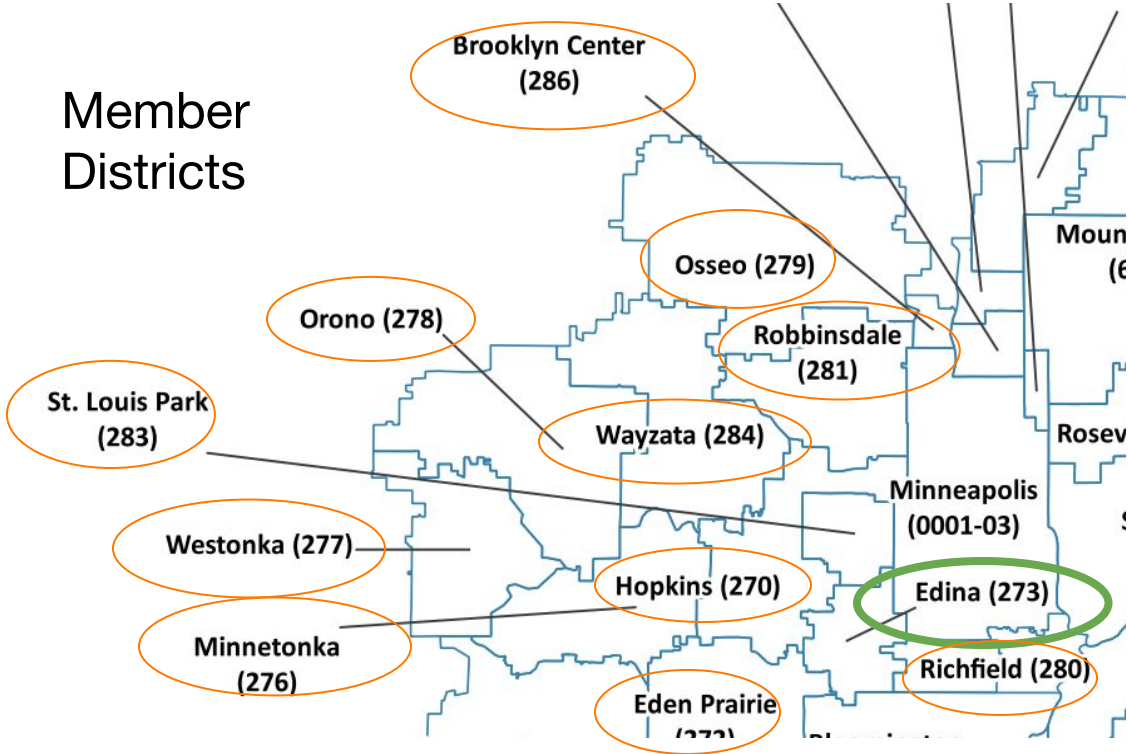
- CTE courses at Hennepin Technical College include: Auto Body Repair, Automotive Technology, Outdoor Motor Sports, Cooking For Independent Living, Culinary Arts, Nursing, Assistant, Media Communications. *Edina 18 students*

Itinerant Services

- Itinerant services includes speech/language, assistive technology, occupational therapy, physical therapy, deaf/hard of hearing, and low vision/blind.



Member Districts



Beside providing itinerant services within our sites, we support all of our member districts.

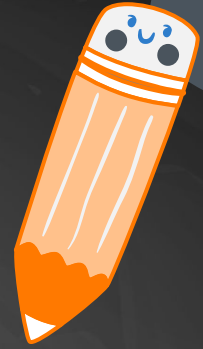
SOUTH EDUCATION CENTER



TIGERS

RESPECTFUL * HONEST * RESPONSIBLE * SAFE

Student Spotlight Ru Brown



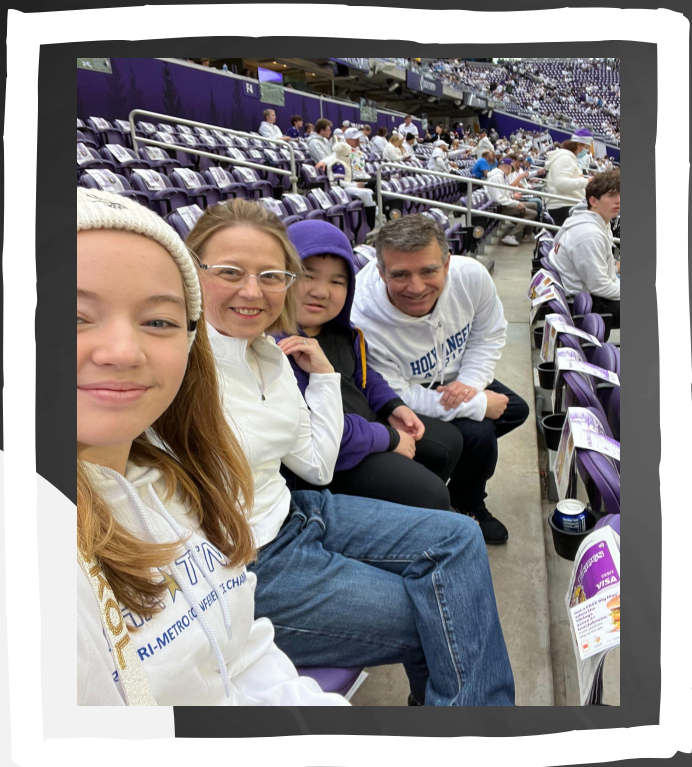


Meet

Ru Brown!

Ru is a fourth grader in our Tier 3 Elementary Program. His primary diagnoses of Autism Spectrum Disorder and Speech and Language Impairments contribute to his individualized approach to learning. Ru exudes positivity and joy.





Ru and his family

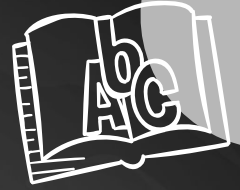
In Ru's Own Words



My name is Ru Brown.
I am 10 years old.
I like playing sports
and high flyin'. I am
the champion! I like
the go karts and I like
music. My favorite colors
are black and orange.



Literacy

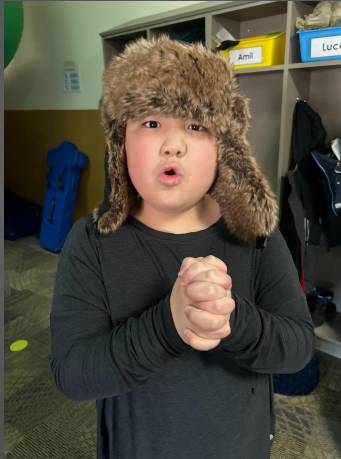
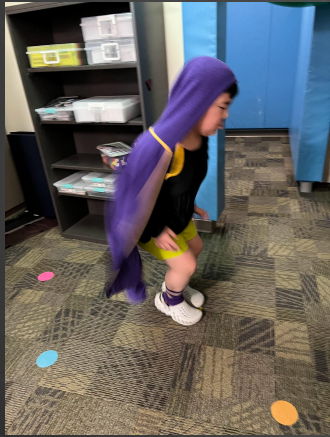


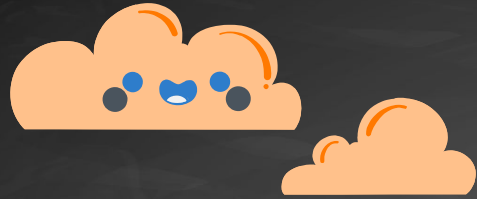
At first, the staff read the page out loud while pointing to each word, and Ru repeated the sentences by pointing to them.

Now, after independently reading a short story, Ru can answer comprehension questions on his own with very little help from the staff.



Self Regulation Skills





“School is more than reading and writing. It is the pride of having family come to view student classroom art, the ability to make friends, a science fair presentation, a place to laugh. District 287’s SEC masterfully delivers those experiences for unique learners and THAT is why our son is thriving.”

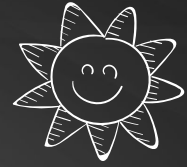
- Susan Whitney-Brown
(Ru’ s mom)



Taking
Turns in
a New
Game

- HELLO
- KONNICHIWA
- YASSOU
- M
- ONGHASEYO
- SALUT
- CIAO
- SAWATDEE
- NI HAO
- PRIVYET
- ALAYKUM
- HALLO





A picture
is worth a
thousand
words

Questions?
