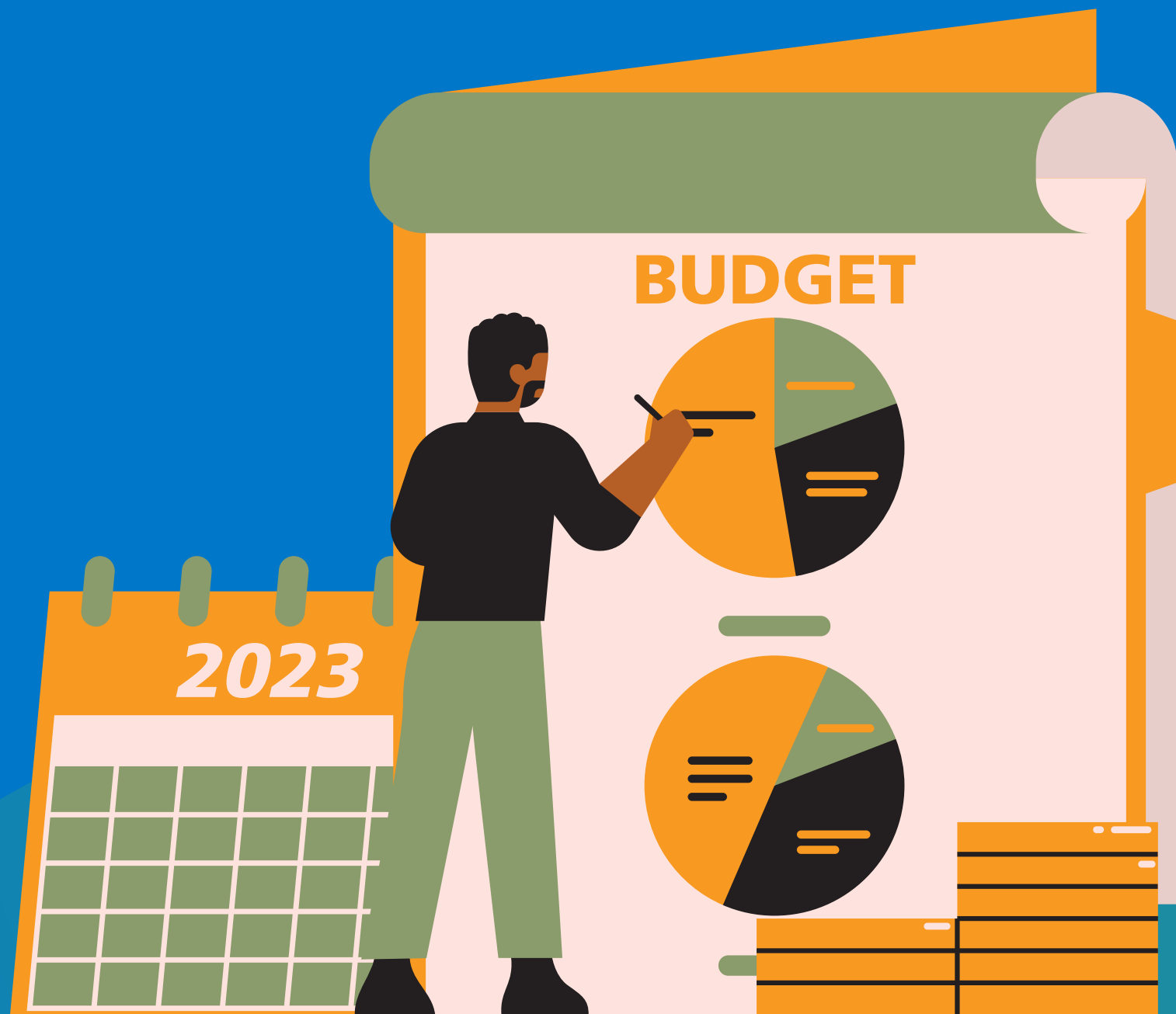




Human Resources & *Campus Support*

2026-27 School Calendar

Alternate Calendar

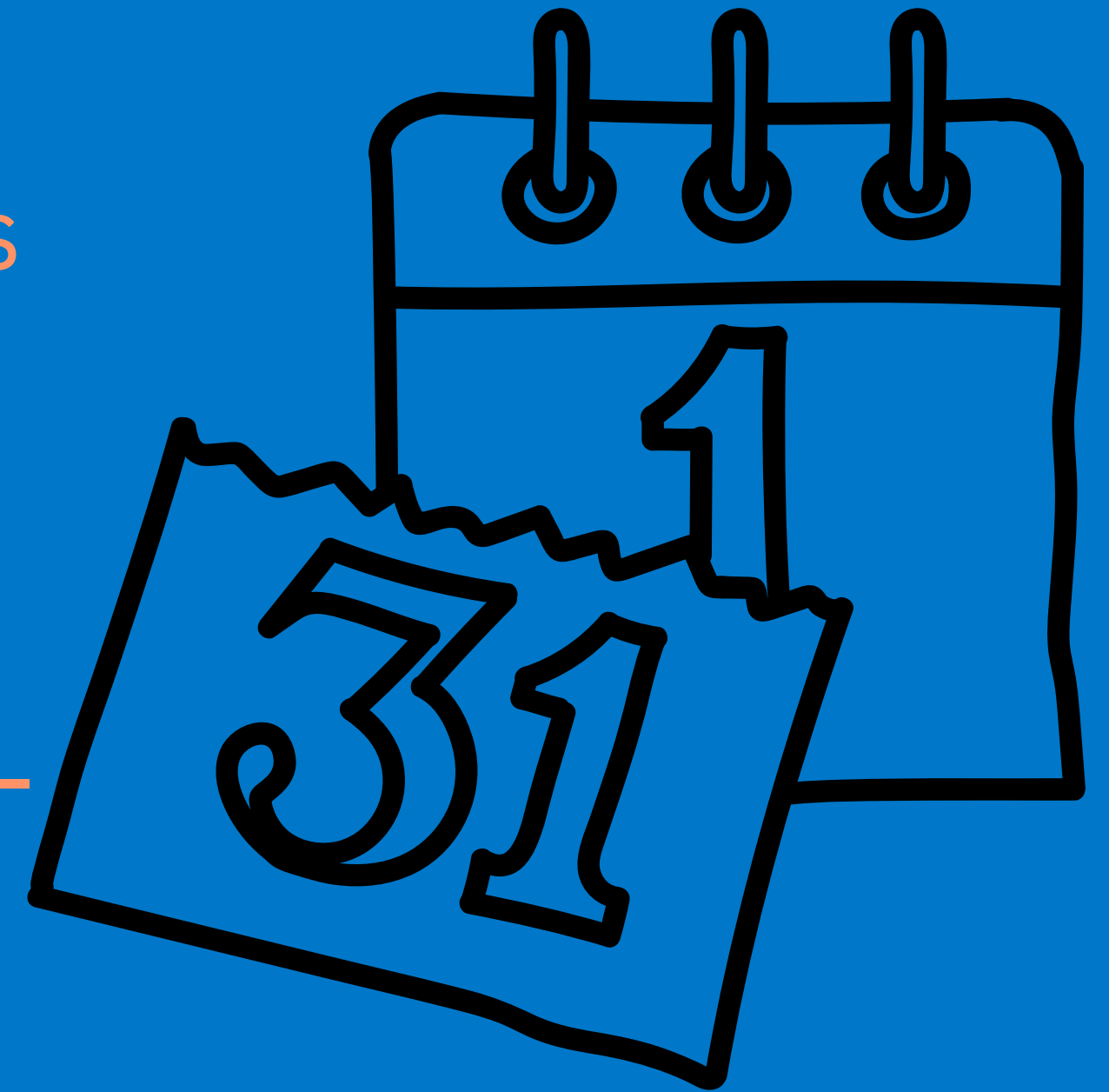


- 1068 Hours per Year
- 30 Hours of Make Up Time
- No Minimum Student Days

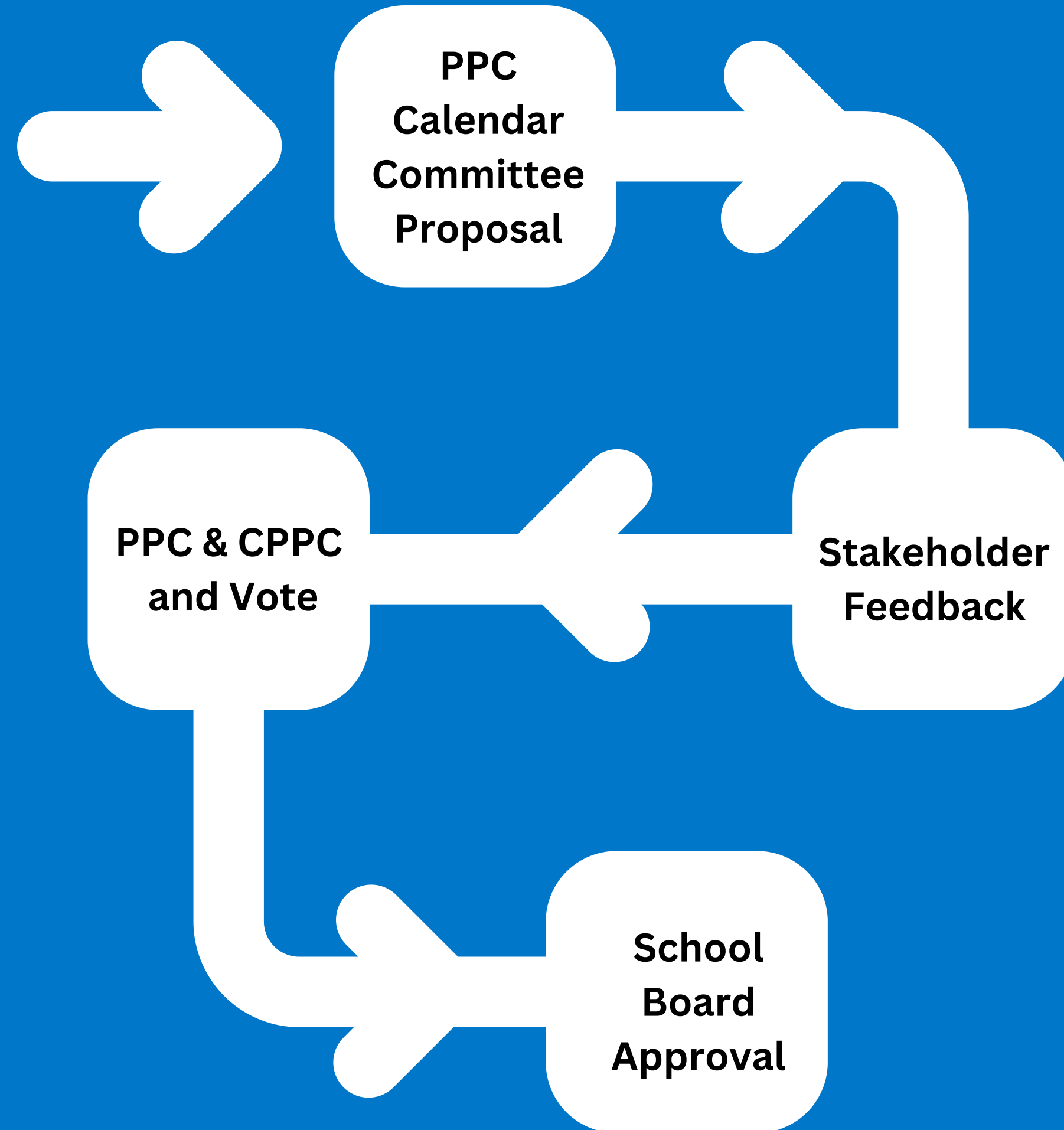
Calendar Information

- 174 Student Days
- 2 Parent/Teacher Conference Days
- 6 Professional Development Days
- 6 Staff Collaboration Days
- 2 Teacher Work Days

190 Teacher Contract Days



Process





2026-2027 DISTRICT CALENDAR

ALTERNATE FORMAT*

- No School
- Parent-Teacher (PT) Conferences 3:30 – 6:30 PM
- School Begins & Ends

AUGUST 2026				
M	T	W	TH	F
3	4	5	6	7
10	11	12	13	14
17	18	19	20	21
24	25	26	27	28
31				

12: First Day of School

SEPTEMBER 2026				
M	T	W	TH	F
	1	2	3	4
7	8	9	10	11
14	15	16	17	18
21	22	23	24	25
28	29	30		

7: Labor Day

OCTOBER 2026				
M	T	W	TH	F
			1	2
5	6	7	8	9
12	13	14	15	16
19	20	21	22	23
26	27	28	29	30

12: PT Conf. (MS/HS)
13: PT Conf. (Elem)
15: PT Conf. (All Schools)
16, 19: Fall Break

NOVEMBER 2026				
M	T	W	TH	F
2	3	4	5	6
9	10	11	12	13
16	17	18	19	20
23	24	25	26	27
30				

2: No School
23-27: Thanksgiving

DECEMBER 2026				
M	T	W	TH	F
	1	2	3	4
7	8	9	10	11
14	15	16	17	18
21	22	23	24	25
28	29	30	31	

18: Semester Ends
21-31: Winter Break

JANUARY 2027				
M	T	W	TH	F
				1
4	5	6	7	8
11	12	13	14	15
18	19	20	21	22
25	26	27	28	29

1-5: Winter Break
6: Return to School
18: MLK Jr. Holiday

FEBRUARY 2027				
M	T	W	TH	F
1	2	3	4	5
8	9	10	11	12
15	16	17	18	19
22	23	24	25	26

15: No School

MARCH 2027				
M	T	W	TH	F
1	2	3	4	5
8	9	10	11	12
15	16	17	18	19
22	23	24	25	26
29	30	31		

15: PT Conf. (MS/HS)
16: PT Conf. (Elem)
18: PT Conf. (All Schools)
22-26: Spring Break

APRIL 2027				
M	T	W	TH	F
			1	2
5	6	7	8	9
12	13	14	15	16
19	20	21	22	23
26	27	28	29	30

2: No School

MAY 2027				
M	T	W	TH	F
3	4	5	6	7
10	11	12	13	14
17	18	19	20	21
24	25	26	27	28
31				

13: Northside Graduation
14: Southside Graduation
21: Last Day of School
31: Memorial Day

SCHOOL DAY

Elementary School
8:00 – 3:00 (390 minutes)

Middle School
8:05 – 3:30 (387 minutes)

High School
8:05 – 3:30 (380 minutes)

SCHOOL YEAR

1st quarter: 42 days/ 266 hours
2nd quarter: 42 days/ 266 hours
3rd quarter: 46 days/ 291.33 hours
4th quarter: 44 days/ 278.66 hours

Total: 174 days/ 1102 hours

Inclement Weather: The District is required to show 30 hours of make-up time in the event of inclement weather or other emergency circumstances. If the Superintendent cancels school, all 30 hours of instructional time are built into the calendar that would not need to be made up. If additional time is necessary to be made up, May 24-28 may be used or time may be added to the remaining instructional days at the discretion of the Superintendent.

In case of excessive inclement weather, please schedule summer travel after May 31st.

*The alternate format calendar allows the district to use instructional minutes to determine the school calendar.

 No School	 Professional Development (PD)
 Collaboration Day	 Parent-Teacher (PT) Conferences - 3:30 - 6:30
 Teacher Work Day	 Grading Period Begins & Ends

2026-2027

STAFF CALENDAR

ALTERNATE FORMAT*



AUGUST 2026					
M	T	W	TH	F	
3	4	5	6	7	
10	11	12	13	14	
17	18	19	20	21	
24	25	26	27	28	
31					

3, 5-6, 10-11: PD
4: Work Day
7: Collaboration Day
12: First Day of School

SEPTEMBER 2026					
M	T	W	TH	F	
	1	2	3	4	
7	8	9	10	11	
14	15	16	17	18	
21	22	23	24	25	
28	29	30			

7: Labor Day

OCTOBER 2026					
M	T	W	TH	F	
			1	2	
5	6	7	8	9	
12	13	14	15	16	
19	20	21	22	23	
26	27	28	29	30	

9: End of 1st quarter
12: PT Conf. (MS/HS)
13: PT Conf. (Elem)
15: PT Conf. (All Schools)
16, 19: Fall Break

NOVEMBER 2026					
M	T	W	TH	F	
2	3	4	5	6	
9	10	11	12	13	
16	17	18	19	20	
23	24	25	26	27	
30					

2: Collaboration Day
23-27: Thanksgiving

DECEMBER 2026					
M	T	W	TH	F	
	1	2	3	4	
7	8	9	10	11	
14	15	16	17	18	
21	22	23	24	25	
28	29	30	31		

18: Semester Ends
21-31: Winter Break

JANUARY 2027					
M	T	W	TH	F	
				1	
4	5	6	7	8	
11	12	13	14	15	
18	19	20	21	22	
25	26	27	28	29	

1: Winter Break
4: Work Day
5: Collaboration Day
6: Return to School
18: MLK Jr. Holiday

FEBRUARY 2027					
M	T	W	TH	F	
1	2	3	4	5	
8	9	10	11	12	
15	16	17	18	19	
22	23	24	25	26	

15: PD

MARCH 2027					
M	T	W	TH	F	
1	2	3	4	5	
8	9	10	11	12	
15	16	17	18	19	
22	23	24	25	26	
29	30	31			

12: End of 3rd quarter
15: PT Conf. (MS/HS)
16: PT Conf. (Elem)
18: PT Conf. (All Schools)
22-26: Spring Break

APRIL 2027					
M	T	W	TH	F	
			1	2	
5	6	7	8	9	
12	13	14	15	16	
19	20	21	22	23	
26	27	28	29	30	

2: Collaboration Day

MAY 2027					
M	T	W	TH	F	
3	4	5	6	7	
10	11	12	13	14	
17	18	19	20	21	
24	25	26	27	28	
31					

13: Northside Graduation
14: Southside Graduation
21: Last Day of School
24-25: Collaboration Day
31: Memorial Day

SCHOOL DAY
Elementary School 8:00 - 3:00 (390 minutes)
Middle School 8:05 - 3:30 (387 minutes)
High School 8:05 - 3:30 (380 minutes)
SCHOOL YEAR
1st quarter: 42 days/ 266 hours 2nd quarter: 42 days/ 266 hours 3rd quarter: 46 days/ 291.33 hours 4th quarter: 44 days/ 278.66 hours
Total: 174 days/ 1102 hours
190 DAY TEACHER CONTRACT
<ul style="list-style-type: none"> 174 school days 2 PT Conf. Days 6 Collaboration Days 2 Teacher Work Days 6 PD Days

Inclement Weather: The District is required to show 30 hours of make-up time in the event of inclement weather or other emergency circumstances. If the Superintendent cancels school, all 30 hours of instructional time are built into the calendar that would not need to be made up. If additional time is necessary to be made up, May 24-28 may be used or time may be added to the remaining instructional days at the discretion of the Superintendent.

In case of excessive inclement weather, please schedule summer travel after May 31st.

*The alternate format calendar allows the district to use instructional minutes to determine the school calendar.

Comments or
Questions?

