

DON'T WAIT. GRADUATE.



**PREMIER
HIGH SCHOOL®**

Amendment Request

April 2024

RESPONSIVE EDUCATION SOLUTIONS TEAM

Rhonda Bradford	RES AR Superintendent
Dennis Felton, Jr. (Presenter)	AR State Director, Premier High Schools & Virtual Learning
Katie Stephens	RES AR Executive Director of Finance
Curtis Shack	Executive Director of Data and Systems Management
Darius Young	PHS of AR District Testing Coordinator
Aaron Duvall	RES AR CTE Director
Dr. Katina Ray	PHS Director of Academics
Marla Pearson	RES AR Director Special Programs

Amendment Request Overview



- 1) Merger:** To merge (1) charter (Premier High School of North Little Rock) with the Premier High Schools of Arkansas Charter.
- 2) Waiver:** To obtain a waiver for A.C.A. § 6-17-2403 (f)(2)A)(i)
- 3) Expansion Site:** Notification of PHS Russellville & PHS Fayetteville campus locations.



PHS MISSION

Our mission is to provide **hope** for students through a **caring, mastery-based, blended learning** option, that promotes a free society and cultivates **moral and academic excellence.**



WHO WE SERVE?

- Students seeking a smaller, personalized in person or virtual learning environment
- Disengaged students
- Students who have or are “at-risk” of dropping out of high school
- Employed student
- Parent student
- Delinquent youth



Premier High Schools of Arkansas

Current Schools

PHS Little Rock

PHS Fort Smith

PHS Texarkana

PHS Online

PHS Russellville

PHS Fayetteville

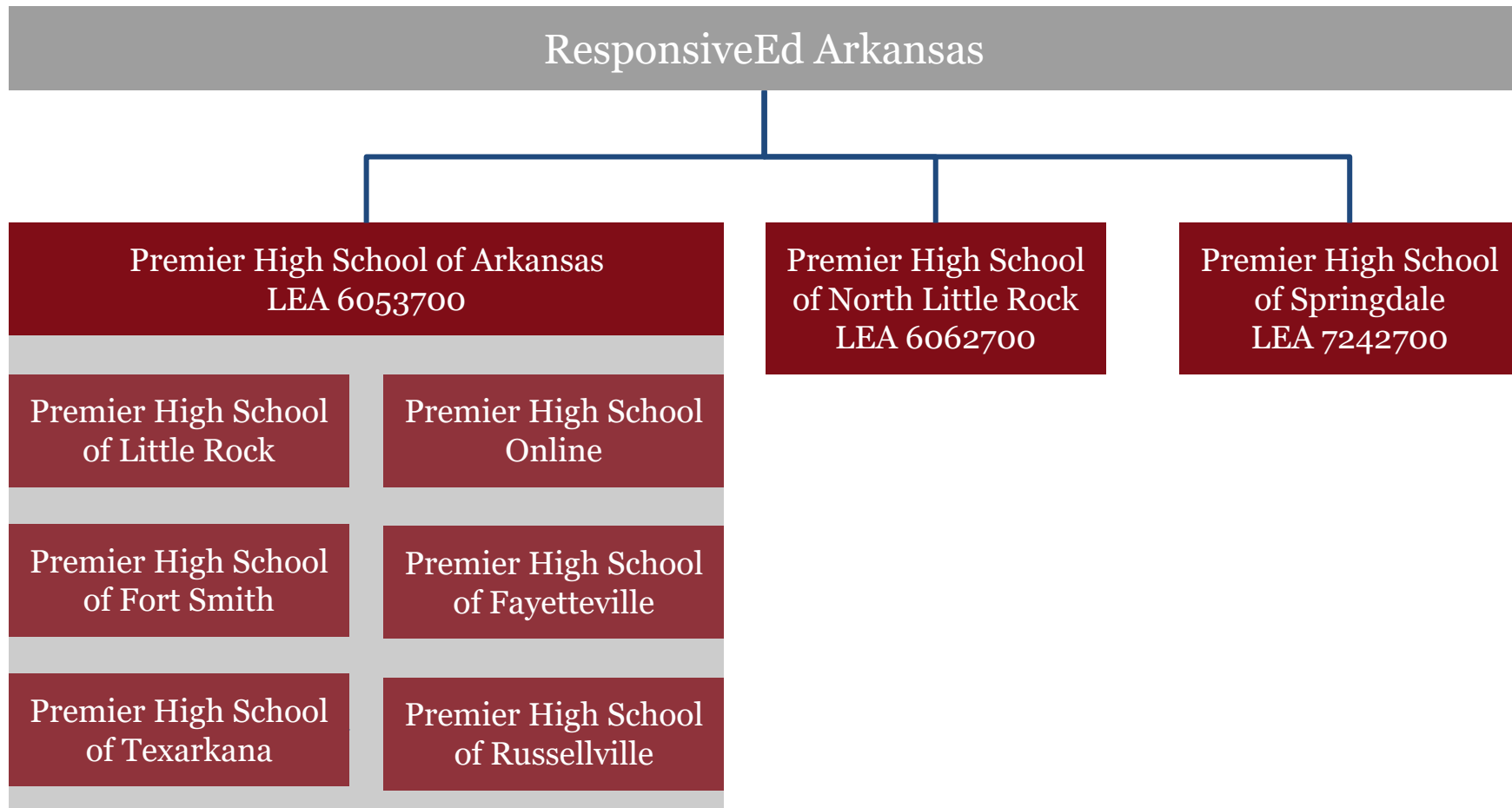
Arkansas



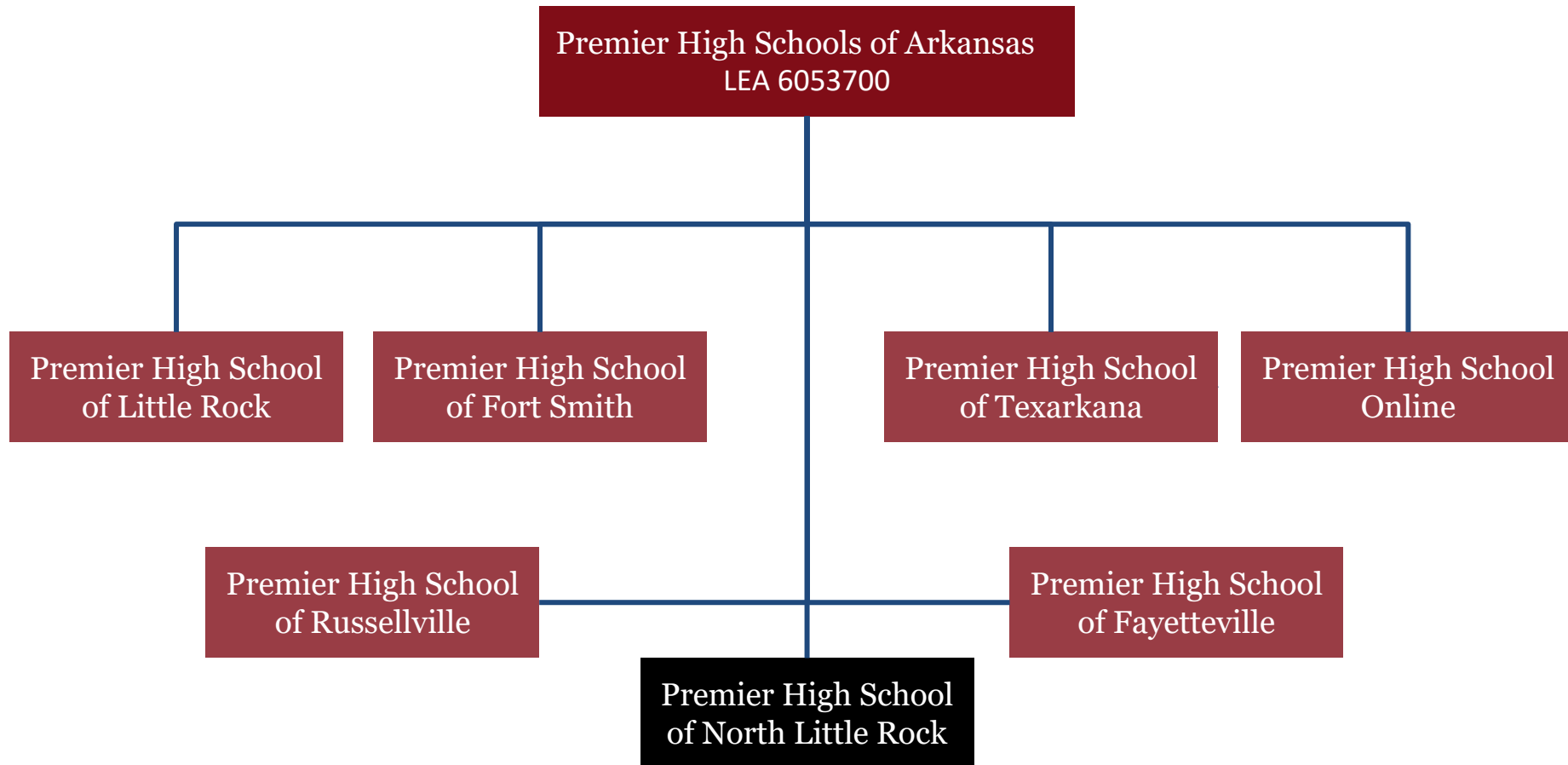
Merger of
Premier High School of North Little Rock
with the
Premier High Schools of Arkansas
Charter



Current District Structure



New District Structure



PREMIER
HIGH SCHOOL.

Current Average Daily Membership by School

Campus	Current Enrollment
Little Rock	64
Fort Smith	100
Texarkana	78
North Little Rock	72
Online	302
Fayetteville	0
Russellville	0
Total	616



PREMIER
HIGH SCHOOL.

Enrollment Cap Breakdown

Campus	Enrollment Cap
Little Rock	150
Fort Smith	150
Texarkana	100
Premier Online	500
Russellville	75
Fayetteville	100
North Little Rock	150
**Enrollment Cap	1,225



*****The charter is seeking no changes to current enrollment cap***

Waiver for A.C.A. § 6-17-2403
(f)(2)A)(i)
LEARNS Act Utilization of Funds



PREMIER
HIGH SCHOOL.

Waiver

Waiver: A.C.A. § 6-17-2403 (f)(2)A)(i)

Premier High Schools of Arkansas is seeking to obtain a waiver pursuant to Ark. Code Ann. § 6-17-2403 (f)(2)A)(i) based on compliance with the eighty percent (80%) utilization of funds.

Meeting the requirement of the new Ark. Code Ann. § 6-17-2403 (f)(2)A)(i), in order to qualify for additional funding for teacher salaries under the LEARNS Act (Act 237 of 2023), would negatively affect the fiscal stability of the campuses in the PHS of Arkansas charter and thus the educational programs we offer.

Premier High School of North Little Rock has the waiver and PHS of AR is seeking to obtain the waiver. Historically, the state has had no legal concerns with the waiver.



Expansion Site: Notification of PHS Russellville & PHS Fayetteville campus locations

PHS of Russellville

School Address	620 South Arkansas Avenue Russellville, AR 72801
Square Footage	3,760 square feet
Rent Amount	\$2,354/month
Lease Term	Five (5) Years

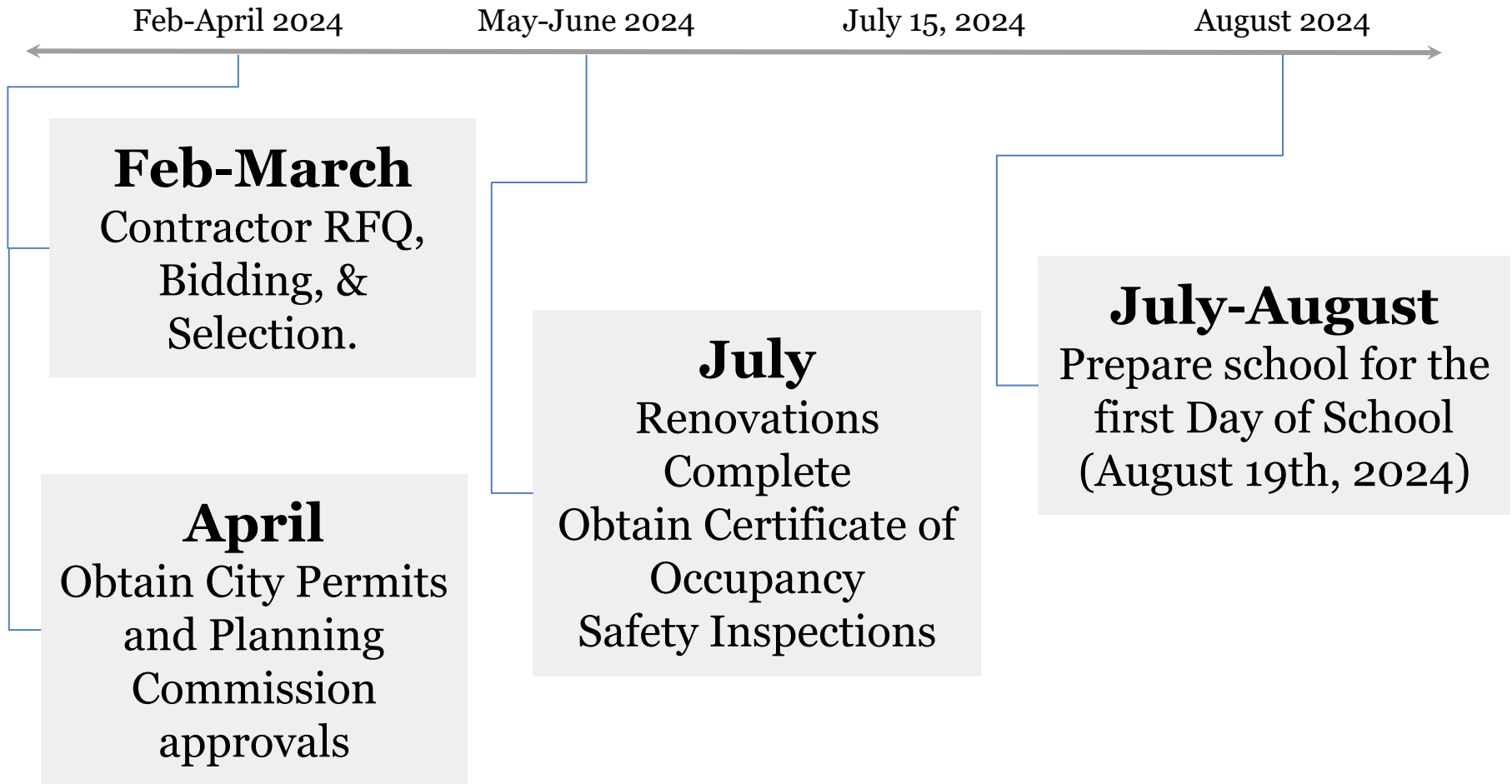


PHS of Fayetteville

School Address	2853 North College Avenue Fayetteville, AR 72703
Square Footage	3,000 square feet
Rent Amount	\$3,675/month
Lease Term	Three (3) Years



Timeline for Building Renovations & Prep



Amendment Request

- 1) Merger:** To merge (1) charter (Premier High School of North Little Rock) with the Premier High Schools of Arkansas Charter.
- 2) Waiver:** To obtain a waiver for A.C.A. § 6-17-2403 (f)(2)A)(i)
- 3) Expansion Site:** Notification of PHS Russellville & PHS Fayetteville campus locations.



Premier High School



“Where the success of our students matter the most”

“Aiming to be responsive to the needs of the Arkansas communities”

Questions?



PREMIER
HIGH SCHOOL.