



State of the School

DECEMBER 9, 2024



Hiring Updates

2024-2025 Openings

- Paraprofessional

Community Ed –

Winter Catalog was sent to families.

Holiday Concerts–

December 5 – K-3 Christmas Concert

December 9 – 7 & 8 Grade Choir Concert

December 12 – 5-12 Grade Band Concert

December 16 – High School Choir Concert

Parent Involvement– Merry Math Night record number of families attended this year.

Two Hour Late Start–

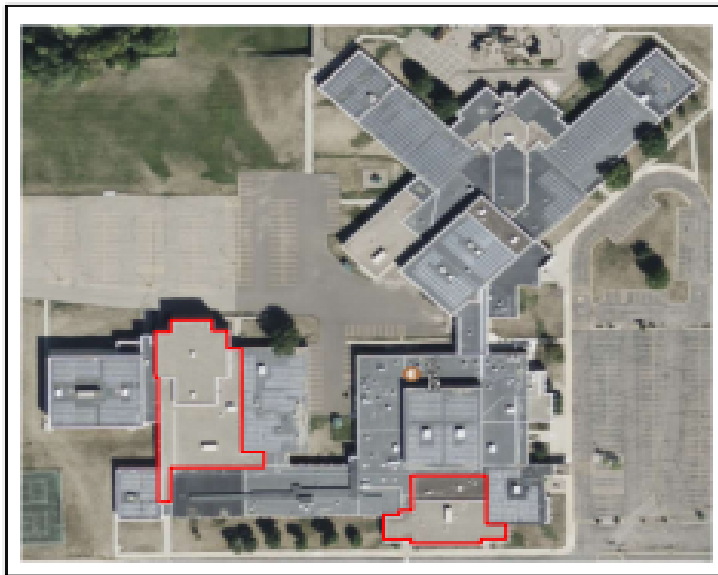
Staff Christmas Celebration and PLCs.

School Updates

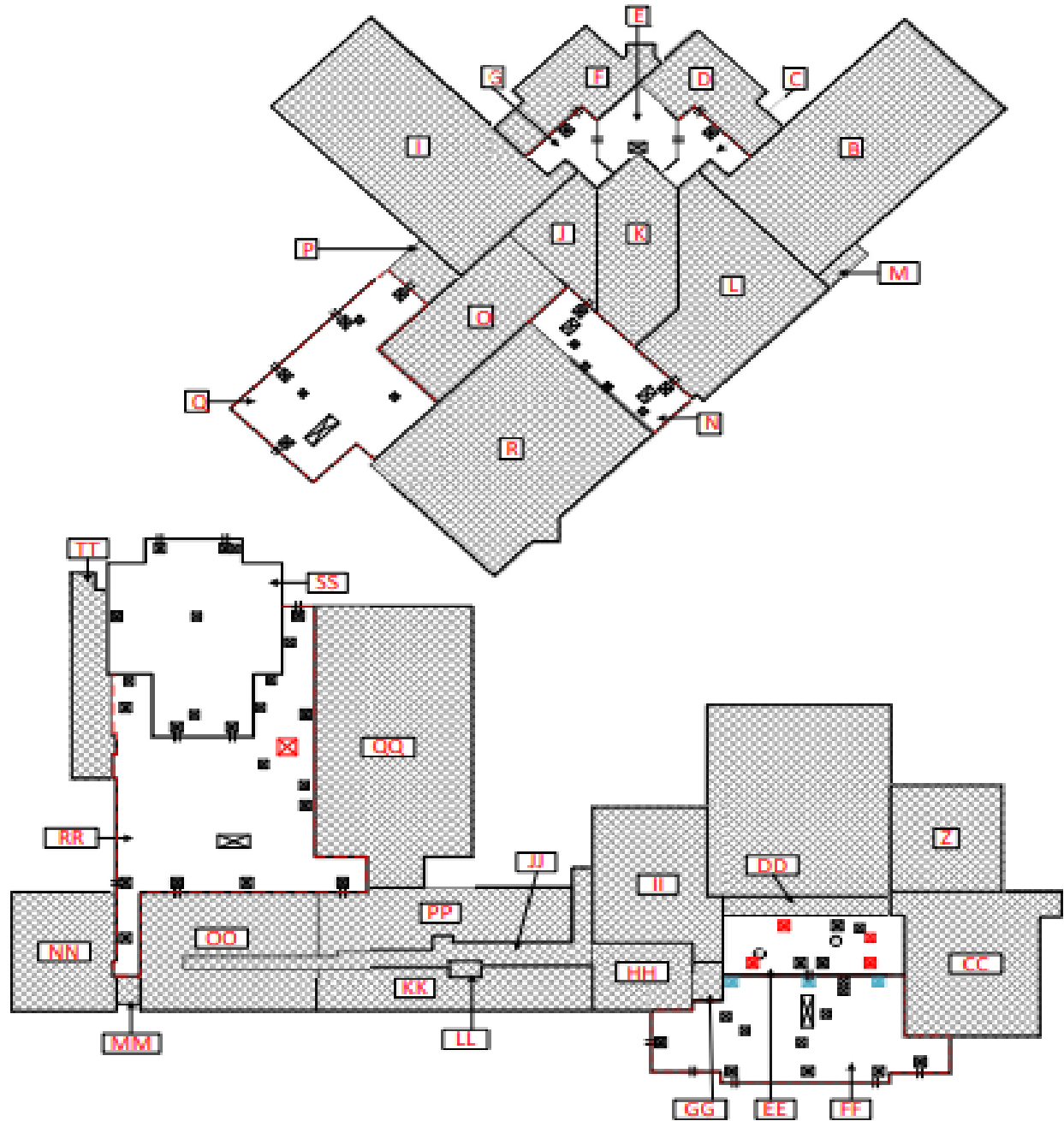




SCOPE #2



SCOPE #1



The Garland Company
200 E. 91st Street
Cleveland, OH 44104



MAPLE LAKE PUBLIC SCHOOLS

200 Hwy. 55 E., Maple Lake, MN 55359

SHEET TITLE:
**SCOPE
1 & 2**

DATE:
11.29.24

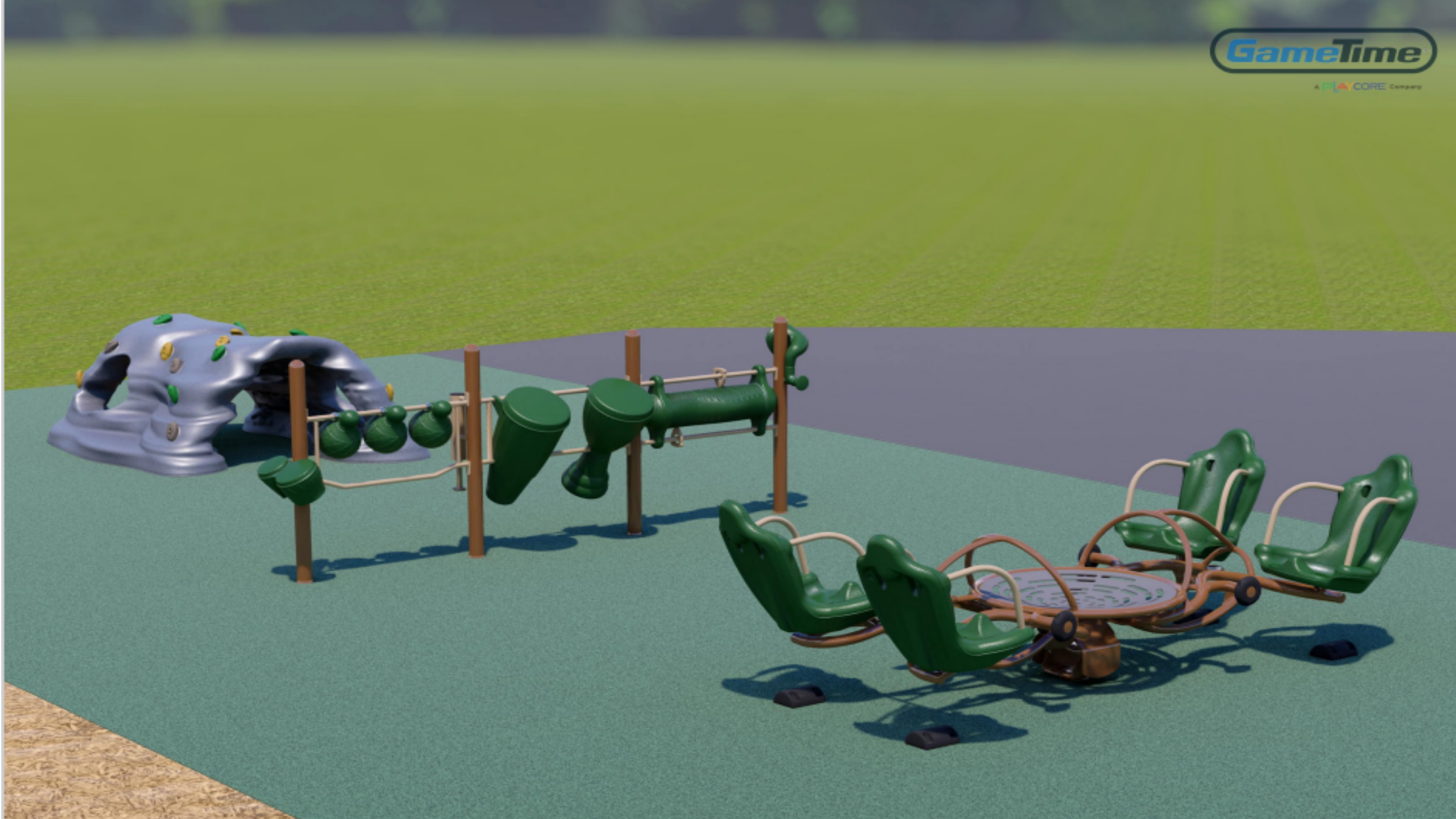






MAPLE LAKE ELEMENTARY
Maple Lake, MN D12483L







Questions
