



UNITED INDEPENDENT SCHOOL DISTRICT AGENDA ACTION ITEM

Topic: Proposed Boundary Changes for various campuses 2016-2017 School Year

Submitted by: Mike Garza **of:** Assistant Superintendent of Support Services

Approved for transmittal to school board: June 22, 2016

Recommendations:

Administration is recommending that the Board of Trustees approve the proposed boundary changes for the school year 2016-2017 as presented for Finley Elem., Kazen Elem., B. Garcia Elem., Ruiz Elem., United South Middle and A. Gonzalez Middle School.

- For school year 2016-2017 incoming PK through 5th grade students from Kazen Elementary residing East of Mines Road (FM 1472) will attend Finley Elementary.
- For school year 2016-2017 incoming PK through 5th grade students from Ruiz Elementary area East of Cuatro Vientos Road will attend B. Garcia Elementary.
- For school year 2016-2017 incoming students from United South Middle area will attend Gonzalez Middle School.
- For school year 2016-2017 incoming students from Gonzalez Middle area will attend United South Middle School.

Rationale:

The propose boundary changes would clarify the school boundaries due to land development, and historical student attendance.

Budgetary Information:

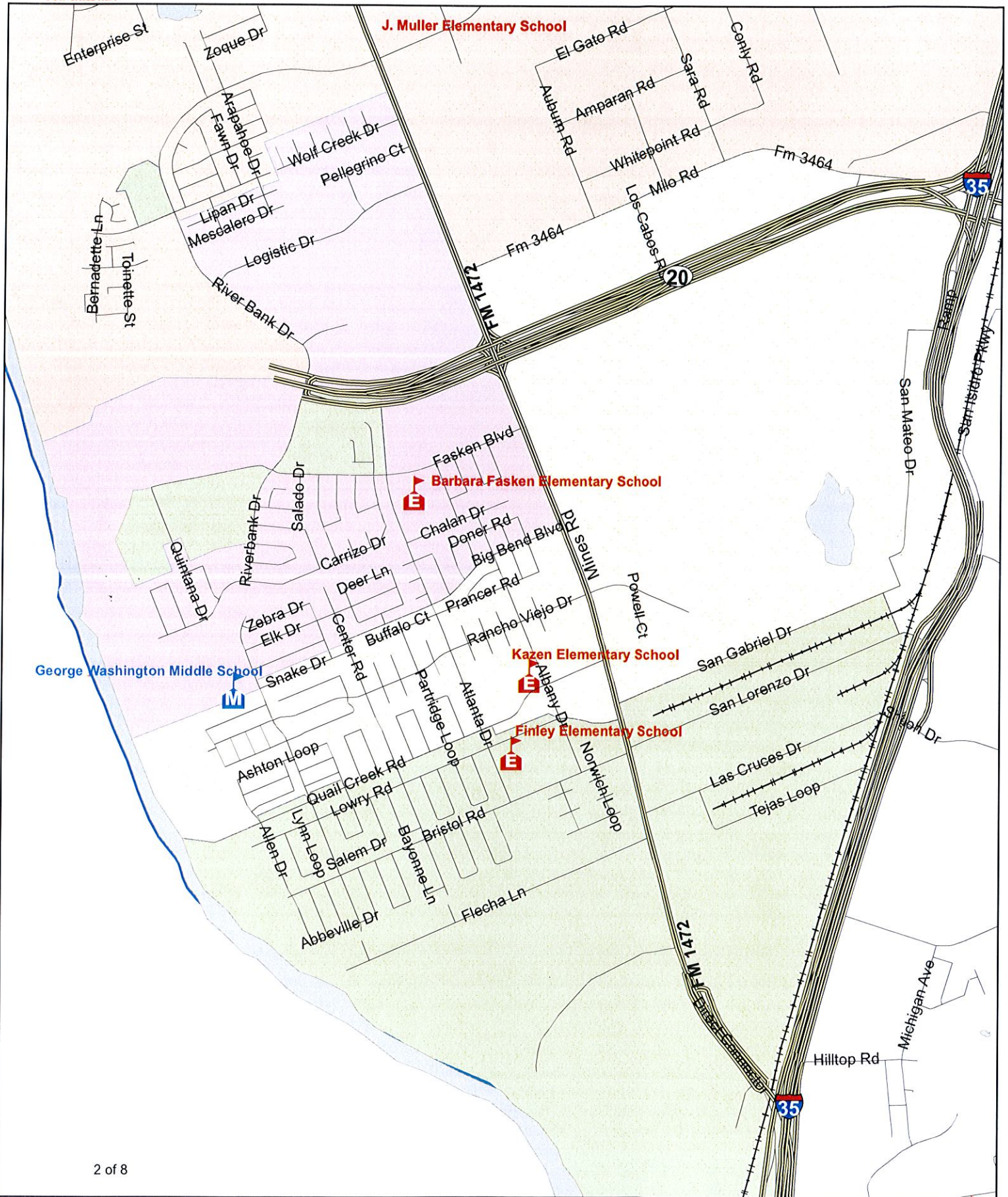
N/A

Board Policy Reference and Compliance

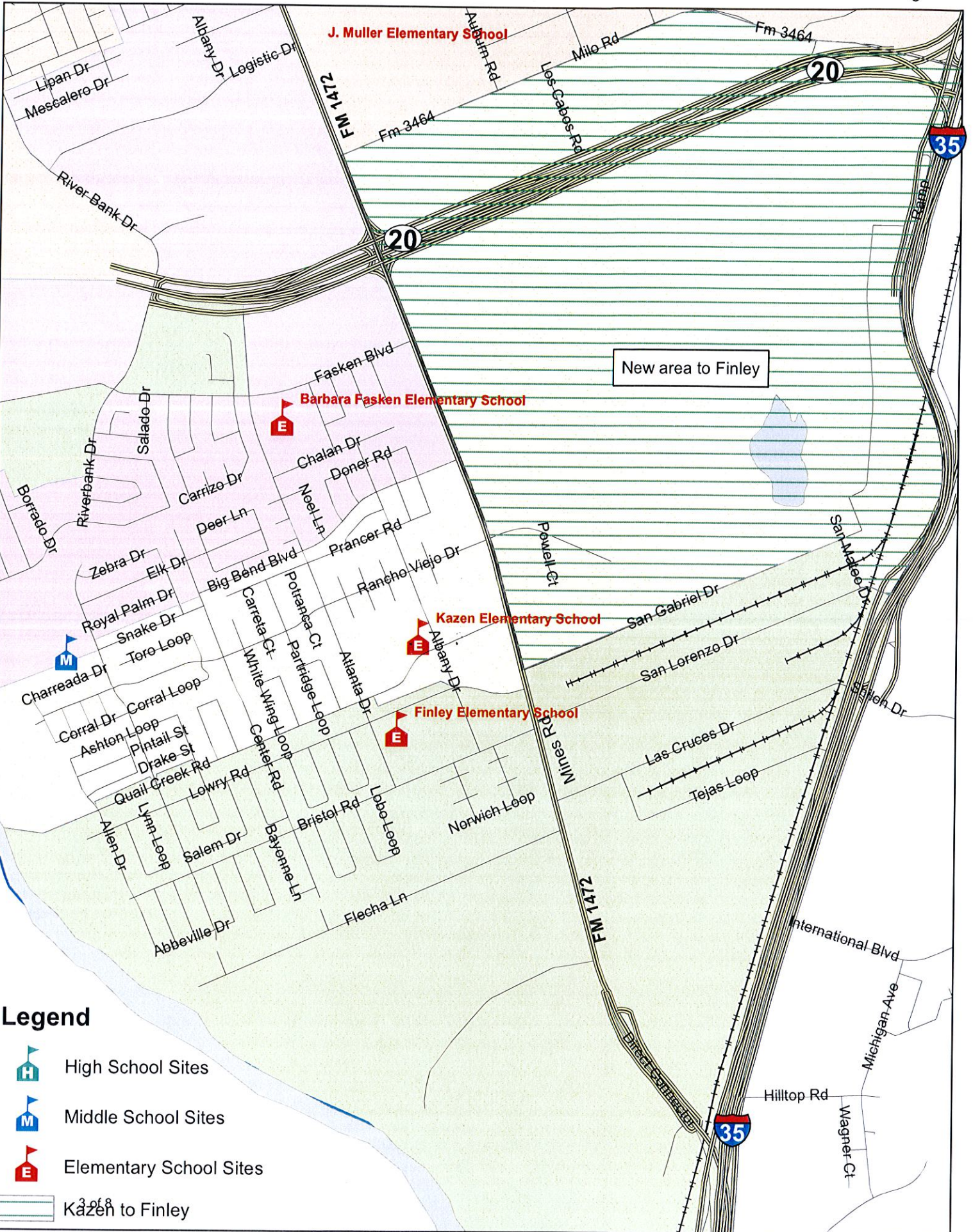
N/A



2015-2016 Current Elementary School Boundaries



Proposed Elementary Boundary Changes

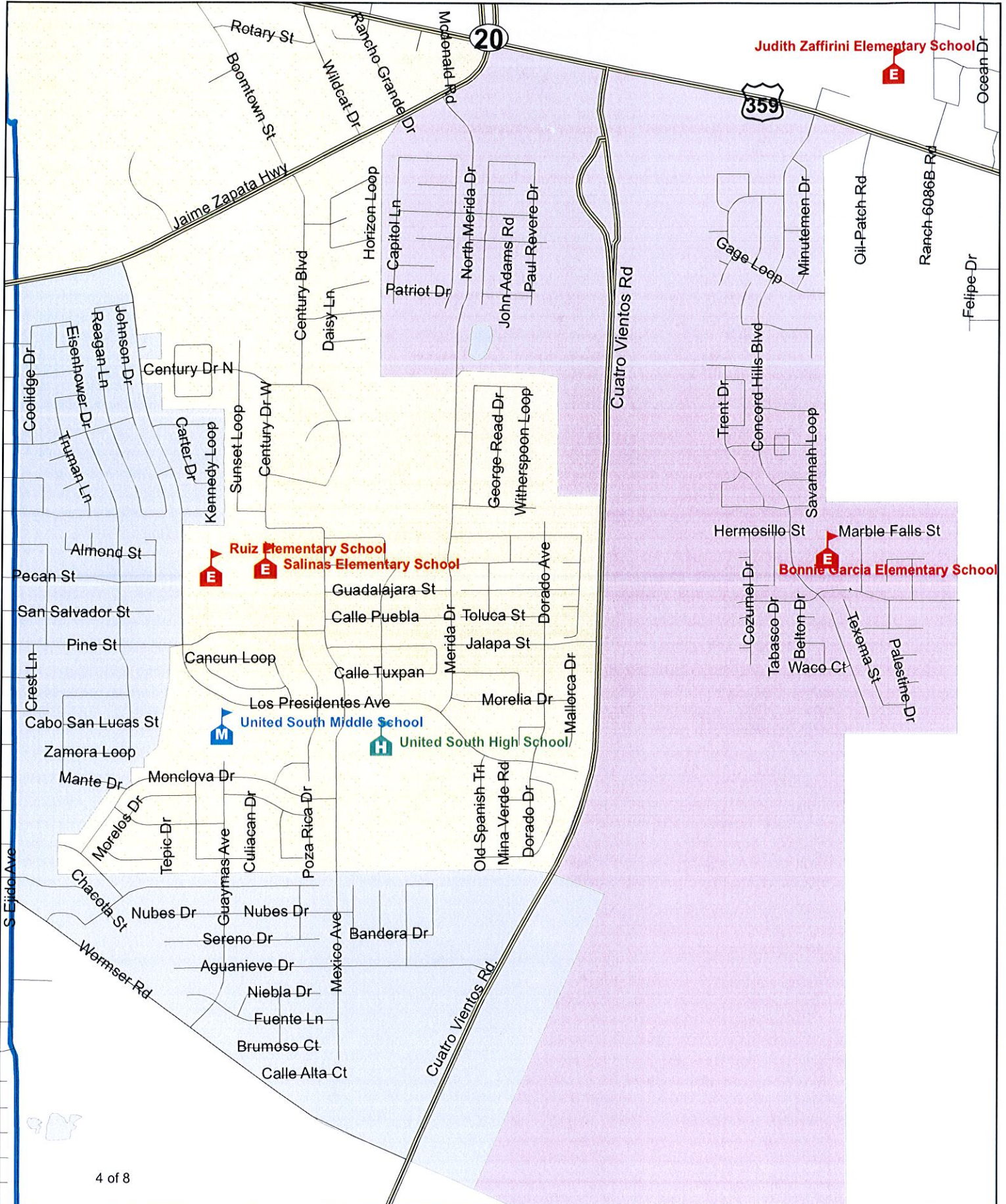


Legend

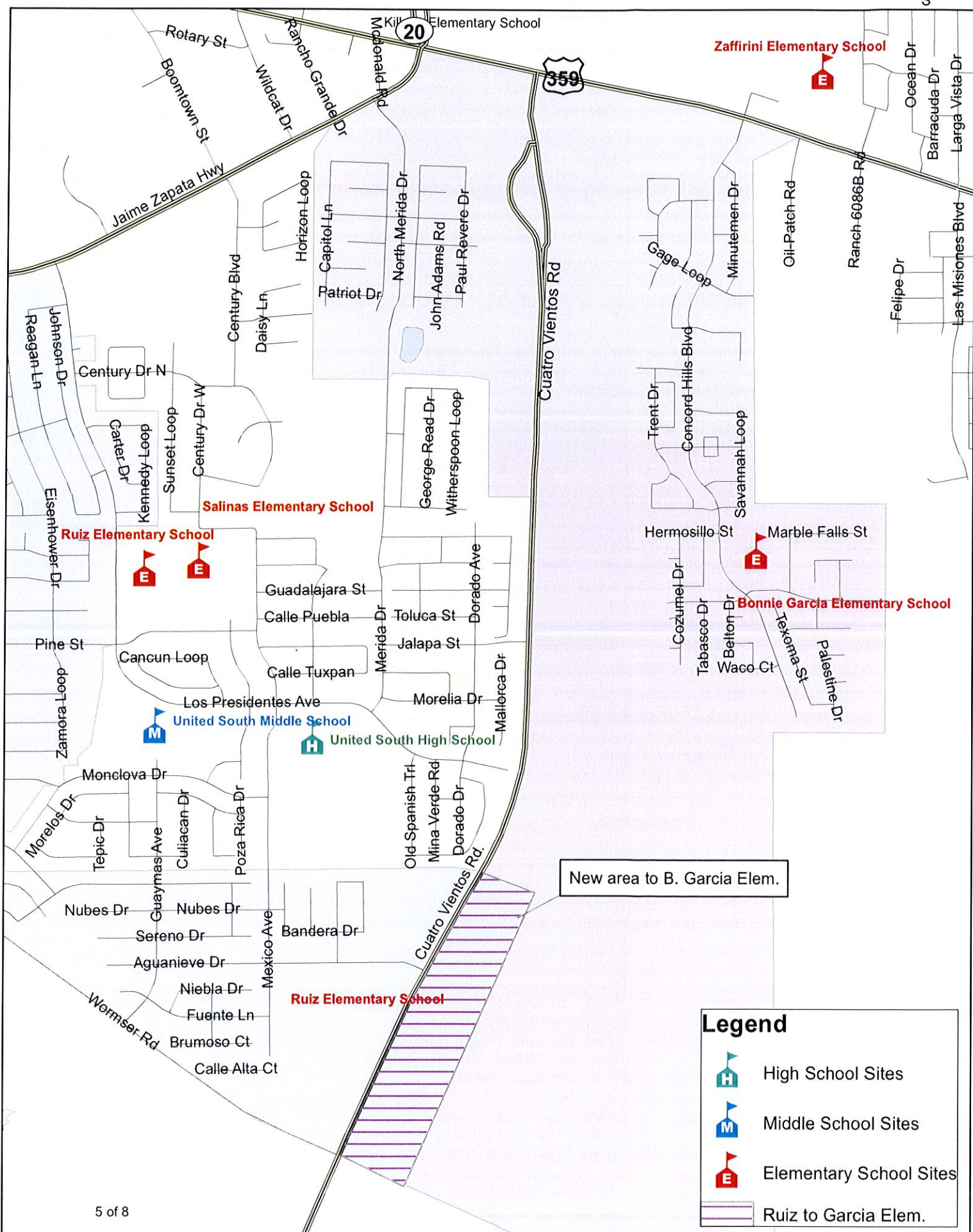
- High School Sites
- Middle School Sites
- Elementary School Sites
- New area to Finley



2015-2016 Current Elementary School Boundaries



Proposed Elementary Boundary Changes

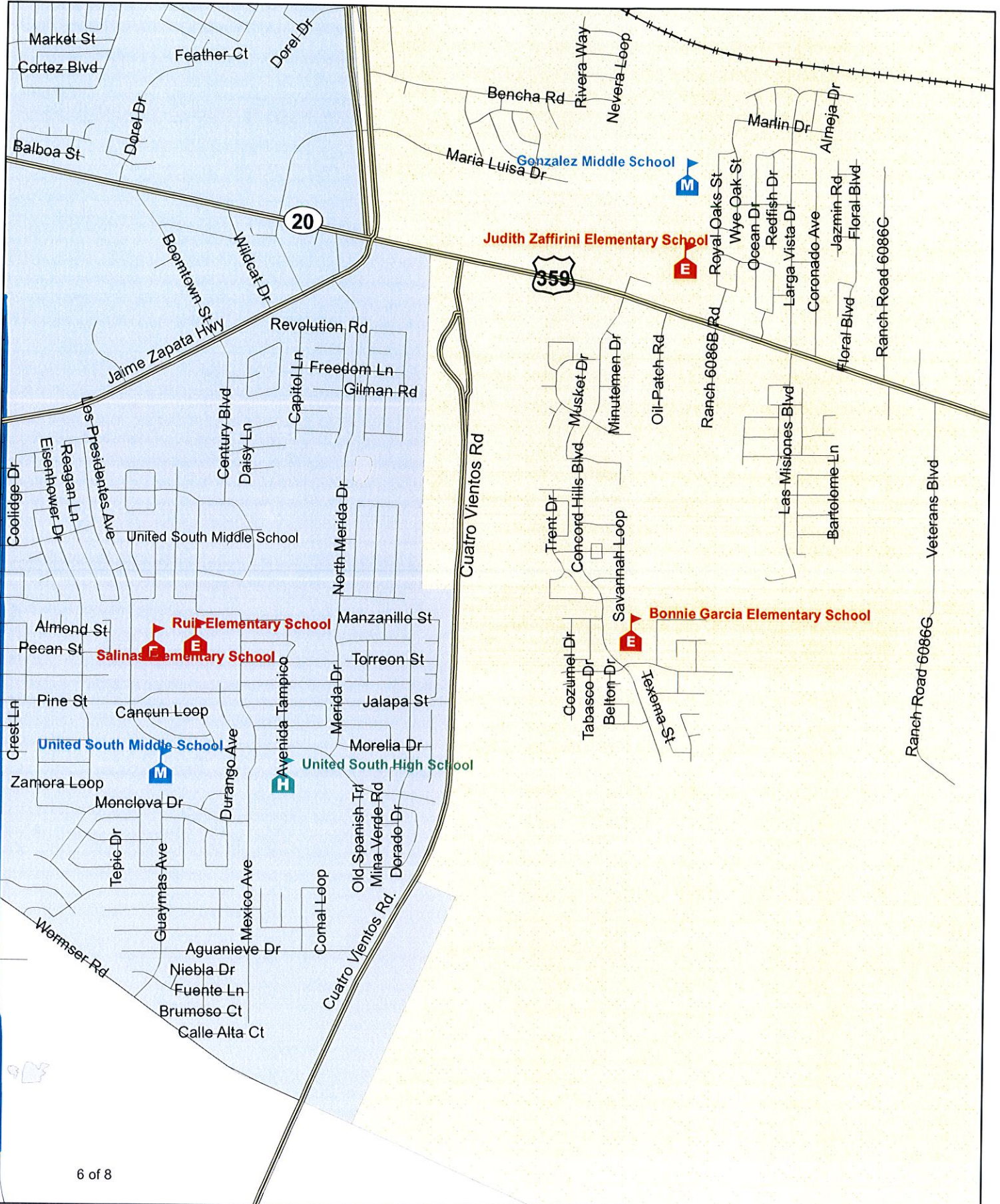


Legend

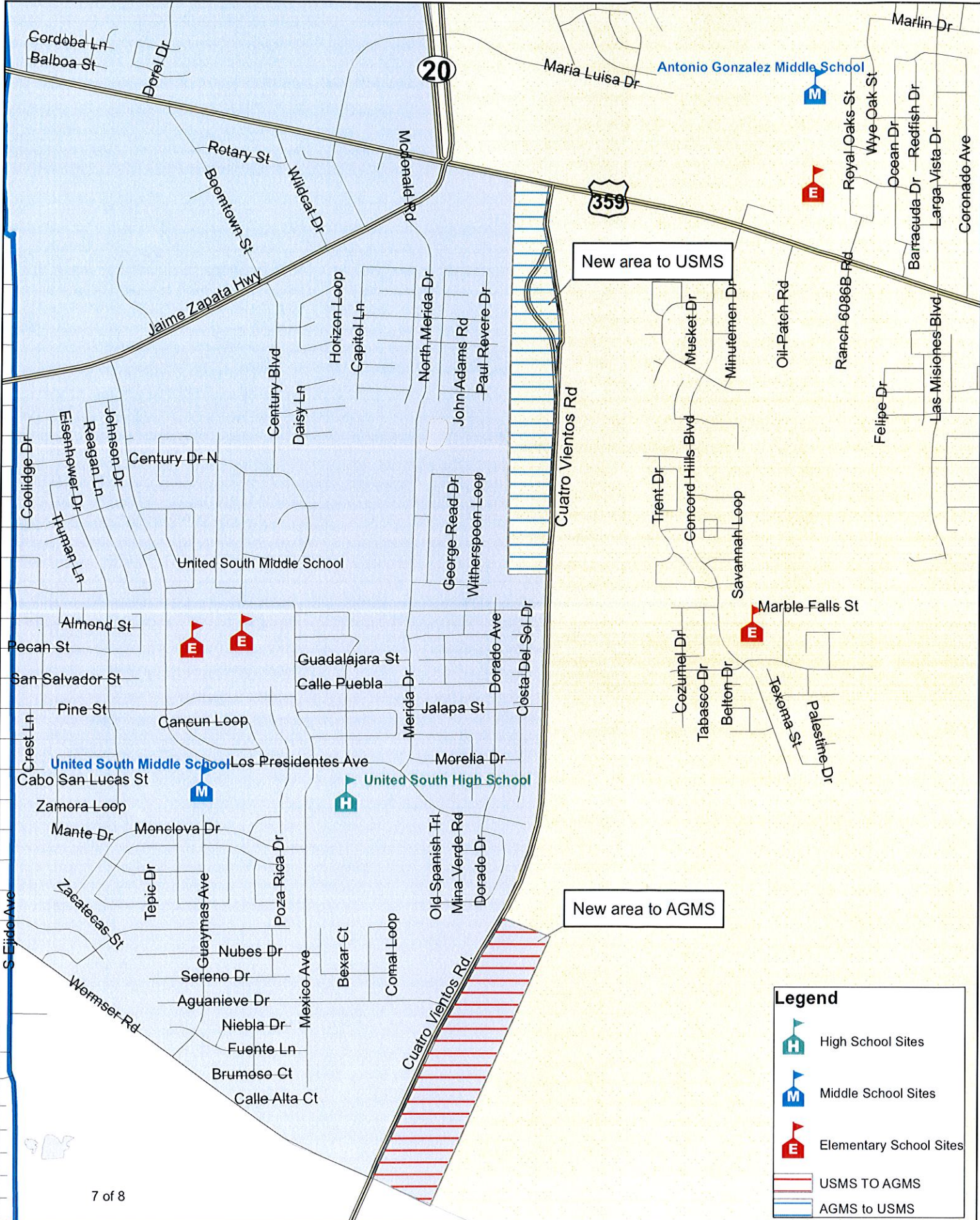
- High School Sites
- Middle School Sites
- Elementary School Sites
- Ruiz to Garcia Elem.



2015-2016 Current Middle School Boundaries








Proposed Middle School Boundary Changes



New area to USMS

New area to AGMS

Legend

-  High School Sites
-  Middle School Sites
-  Elementary School Sites
-  USMS TO AGMS
-  AGMS to USMS

Proposed School Boundary Descriptions

Kazen Elementary

The northeast boundary starts Mines Rd. (FM 1472) and Rancho Viejo; West on Rancho Viejo Dr. including streets south of Big Bend Blvd. including Snake Dr. to the Rio Grande River. The southeastern boundary is Mines Rd & Lowry Rd; to include Quail Creek Apartments and those students residing North of Quail Creek Rd except the 1400 and 1500 blocks of Quail Creek Rd.

Finley Elementary

The northeast boundary starts on IH 35 & FM 3664 to Mines Rd, south on Mines Rd, west on Quail Creek Rd. (excluding Quail Creek Apartments) to Rio Grande River. The south boundary is Del Mar Blvd. and IH 35; West on Del Mar. Everything west of IH 35 and north Del Mar Blvd; included are students from Villas San Agustin Subdivision (between Fasken Blvd., Bob Bullock Lp., and Cerralvo Dr.) and the Riverbank Village Apartments. All students on both sides of Lowry Rd. go to Finley Elementary.

Ruiz Elementary

The northwest boundary begins on Jaime Zapata Hwy and S. Ejido Ave, moves East on Jaime Zapata Hwy, south on Ave Los Presidentes to Kennedy Lp and Carter Lp. The boundary continues South, then moves west to include Las Americas Subdivision Unit I and Mantes Dr. The boundary moves around Las Americas Unit III moving south to include all of the Cuatro Vientos Norte Subdivision (West of Cuatro Vientos Rd), then moves west on Wormser Rd to S. Ejido Ave and north to Jaime Zapata Hwy.

Bonnie-Garcia Elementary

The northwest boundary begins on Hwy 359 including Independence Hills, Freedom Park, Concord Hills, Cheyenne, and Emerald Valley (west of Loop 20). To include areas East of Cuatro Vientos Rd/North of Wormser Rd.

United South MS

The northwest boundary is East of N. Ejido Ave. (excluding Clark's Crossing Apts. area), South of Clark Blvd, West of Loop 20, West of Cuatro Vientos Rd, and North of Wormser Rd.

A.Gonzalez MS

The northwest corner boundary starts at the intersection of N. Ejido Ave. and E. Ash St., South on N. Ejido Ave. to Clark Blvd. (to include Clark's Crossing Apartments area), East on Clark Blvd. to Loop 20 (to include North and South of Hwy 59), south on Loop 20 to Hwy 359, East on Hwy 359 (to include North and South of Hwy 359). South on Cuatro Vientos Rd to Wormser Rd including all areas East of Cuatro Vientos Rd.