



Special Education Advisory Committee (SEAC)

School Board Meeting – May 4, 2026

Presented by:

Rachel Johnston, Special Education Supervisor

Special Education Advisory Committee



A125A.24 Parent Advisory Councils:

“Increase the involvement of parents of children with disabilities in district policy making and decision making, school districts must have a special education advisory council that is incorporated into the district's special education system plan.”

Membership



SEAC Members 25-26

Special Education Leadership: Sara Lein, Laurie Hume, Rachel Johnston

- Parent representatives: At least 1 from each building level: Elementary, Middle, High, plus ECSE and Branch Out
- Staff Representatives: At least 1 teacher or paraprofessional from each building level
- Nonpublic Staff Representative from Community of Saints
- Nonpublic Parent representative
- Principal Representative: Libby Huettl from Somerset
- School Board Representative: Morgan Steele

2025-2026 Meeting Topics



Meeting 1 - October 1

Communities For All

Meeting 2 - December 11

Supported Decision Making & Guardianship

Meeting 3 - January 8 (in person) & February 12 (Virtual)

Navigating Dakota County Supports

Meeting 4 - May 6

Technology Addiction - Aris Clinic

Communities for All



DAKOTA COUNTY
COMMUNITIES FOR ALL

WEDNESDAY, OCTOBER 1
6:00 P.M.

Learn about how Dakota County is creating an inclusive environment for individuals with Disabilities

SEAC welcomed DeAnn Prouty from Dakota County to share information about “Communities for All”

Communities for All

Communities for All | Dakota County



- Accessible, safe and welcoming spaces: Equal access regardless of physical or cognitive abilities.
- Inclusive programs: Activities and events that welcome everyone.
- Supportive services: Help for those who need help participating.
- Respectful attitudes: Treating everyone with dignity and understanding.





Supported Decision Making

SEAC welcomed Katie Hestness from Lutheran Social Services to share information about **“Supported Decision Making”**

Supported Decision-Making and Guardianship



This training is supported with funding from Minnesota Department of Human Services, Aging and Disability Services Division.

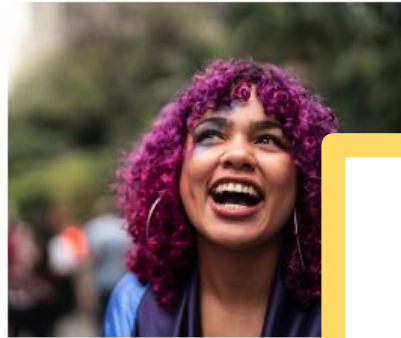


Supported Decision Making



Features of Supported Decision-Making

- Person-Centered
- Self-Directed
- Flexible
- Utilizes Trusted Supporters
- Promotes Independence
- Increased Quality of Life
- Reduces Guardianship



Things to Consider

Supported Decision-Making:

- Maintains Rights
- Is the person able to assist in their care with supports available?
- Does the person have capacity to understand and make decisions regarding their care?
- Does disagreement in their choices mean they don't have the right to make them?

Guardianship:

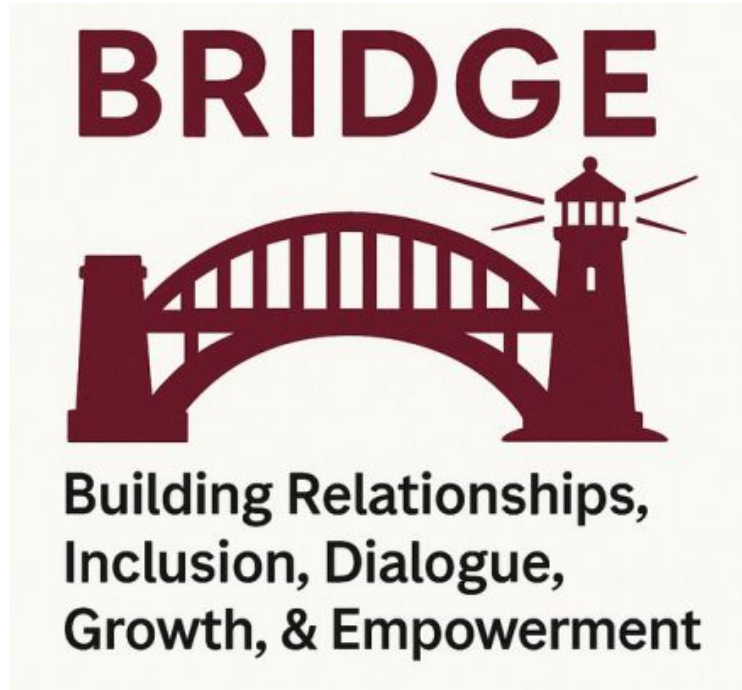
- Removal of rights
- If help is needed, could it be a limited guardianship?
- Could it be a limited duration?
- What is the problem you are trying to solve with guardianship?
- Is guardianship needed or is it just more "comfortable"?



**Lutheran
Social Service**
of Minnesota

County Resources

Dakota County SEAC



The Dakota County Special Education Advisory Committee partnered with Intermediate School District 917's B.R.I.D.G.E. group to provide information on navigating Dakota County Services and Supports.



Screen Addiction



Erik Kersten, MA, LPCC
Therapeutic Team
Psychotherapist



2026-2027 Meetings



Date	Time	Meeting Location
Wednesday October 1	5:30 to 6:30	Branch Out (or TBD)
Wednesday December 3	5:30 to 6:30	Branch Out (or TBD)
Wednesday February 4	5:30 to 6:30	Branch Out (or TBD)
<i>Spring</i> Dakota County SEAC meeting	TBD (Arranged by 917)	TBD



For more information about SEAC, contact:

Rachel Johnston

Special Education Supervisor

rachel.johnston@isd197.org