



North Slope Borough Joint Meeting February 2025 Student Outcomes

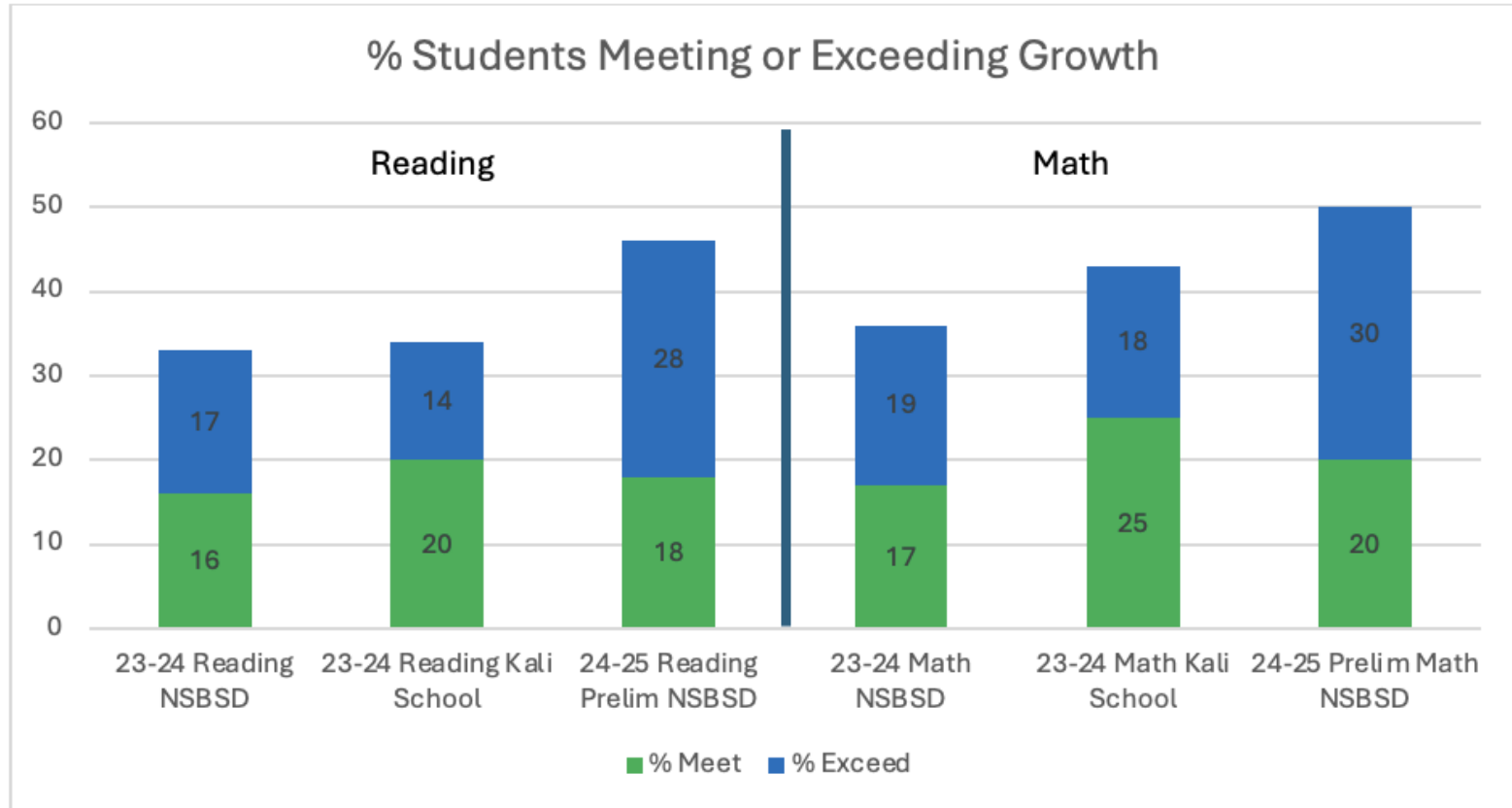


Caitlin Santos, PhD
Director of Curriculum & Instruction
North Slope Borough School District

Academic Outcomes Introduction

- Curriculum & Instruction Team
 - Instructional Support (Elementary, Secondary, Intervention, and Assessment support, School Media/Librarian, Model Classroom, curriculum evaluation and support)
 - School Improvement (Targeted assistance for school administrators and staff)
 - Data & Reporting (Student Records, Data Management, Grants & Federal Programs)
- The focus of the administration is:
 - High Quality Instructional Materials
 - Alignment of instructional funding sources with Pedagogy and Strategic Plan
 - Focus on intervention services
 - Transparency about student outcomes
 - Committing to a 3-5 year plan

NWEA MAP Prelim Data Winter 24/25



How do we assess student growth?

- The School District is committed to assessing the Whole Child. This means that as an organization, we are focused on the development of the whole child and not just their academic growth.
- MAP Growth is one measure we use to determine proficiency and growth in Reading, Math, and Language Usage.
- MAP Growth is a **computer-based test**. When a child answers a question correctly, the next question the computer gives them is more challenging. If they answer incorrectly, the next one is easier. These results provide a complete picture of what our students know and are ready to learn - whether **on, above, or below grade level**.
- Staff use the results to help guide instruction, tailor classroom lessons specific to student needs, and set goals with the students.
- MAP Growth also measures **growth over time**, allowing us to track progress throughout the school year and across multiple years.

5th grade NWEA MAP Sample



100%



Exit Test

Read the paragraph.

Earth has five oceans. They are part of one large ocean. Ocean water covers most of the planet. The oceans are very salty. The oceans are very important to life on Earth. Many plants and animals live in the oceans. The oceans also help make the weather on Earth. Water moves from the ocean to the sky. Later, the water falls as rain or snow. In this way, oceans provide Earth with the water that people, animals, and plants need to live.

What is the main idea of the paragraph?

- 1. Oceans are very salty.
- 2. There are five oceans on Earth.
- 3. Plants and animals live in oceans.
- 4. Oceans are important to life on Earth.

NWEA MAP 5th Grade Sample



100%



Exit Test

Read the passage. There are several questions about this passage.

The White-Crowned Sparrow

- 1 Sparrows are small, common birds. They live in most parts of North America. There are many kinds of sparrows. These birds live in many different places, or habitats. Sparrows can live in the city or the country.

What They Look Like

- 2 White-crowned sparrows are one kind of sparrow. They are easy to spot. A white-crowned sparrow looks plain gray from far away. When seen up close, this bird has black and white stripes on its head. It also has a pale pink or yellow beak. Its chest is pale gray, and it has white bars on its wings. Its back is soft brown. The white-crowned sparrow's tail is long. The male and female birds look alike.

Where They Live

- 3 White-crowned sparrows live in bushy areas. Look for these birds in woodlands and thickets, which are areas with lots of trees and bushes. They scratch the ground for food in nearby open areas.

What They Eat

- 4 White-crowned sparrows eat many kinds of seeds, including sunflower seeds. They like grasses and grains, too. They eat some insects. They also like blackberries.

How They Nest

- 5 These birds make nests in shrubs. They build them up to ten feet high. The female makes the nest with twigs. Then she lines the nest with soft grass and feathers. The female lays 3–7 light blue-green eggs. The eggs have brownish spots. It takes the eggs 11–14 days to hatch.

How They Raise Their Young

- 6 After the eggs hatch, the female bird stays on the nest for 7–12 days. Both the males and females feed the young birds. Then the male sparrow keeps feeding the baby birds. The female starts to build another nest. She lays more eggs there.

What Their Song Sounds Like

Under which heading does the author include information about white-crowned sparrow babies?

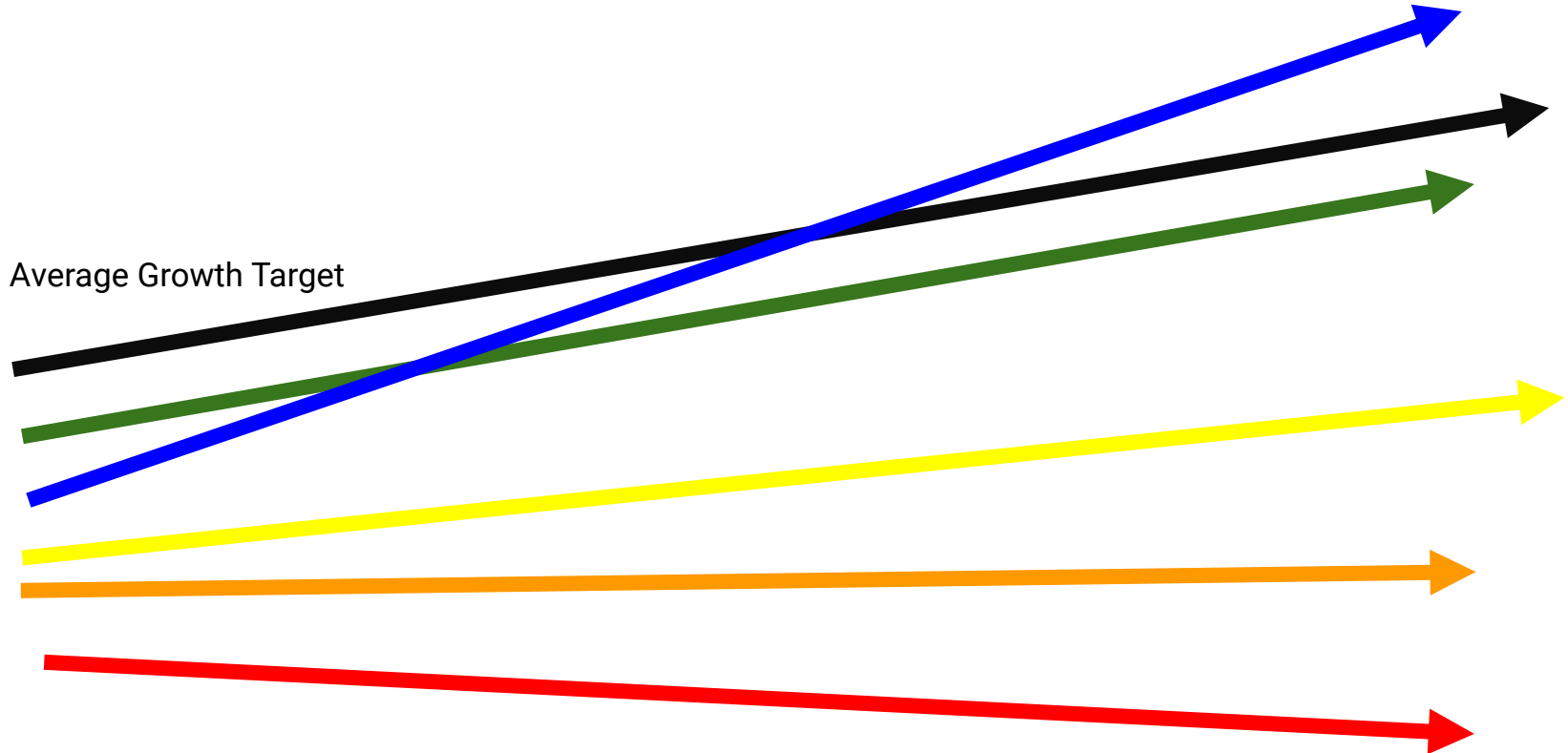
1. Where They Live
2. What They Eat
3. How They Raise Their Young
4. What Their Song Sounds Like

Performance Indicators

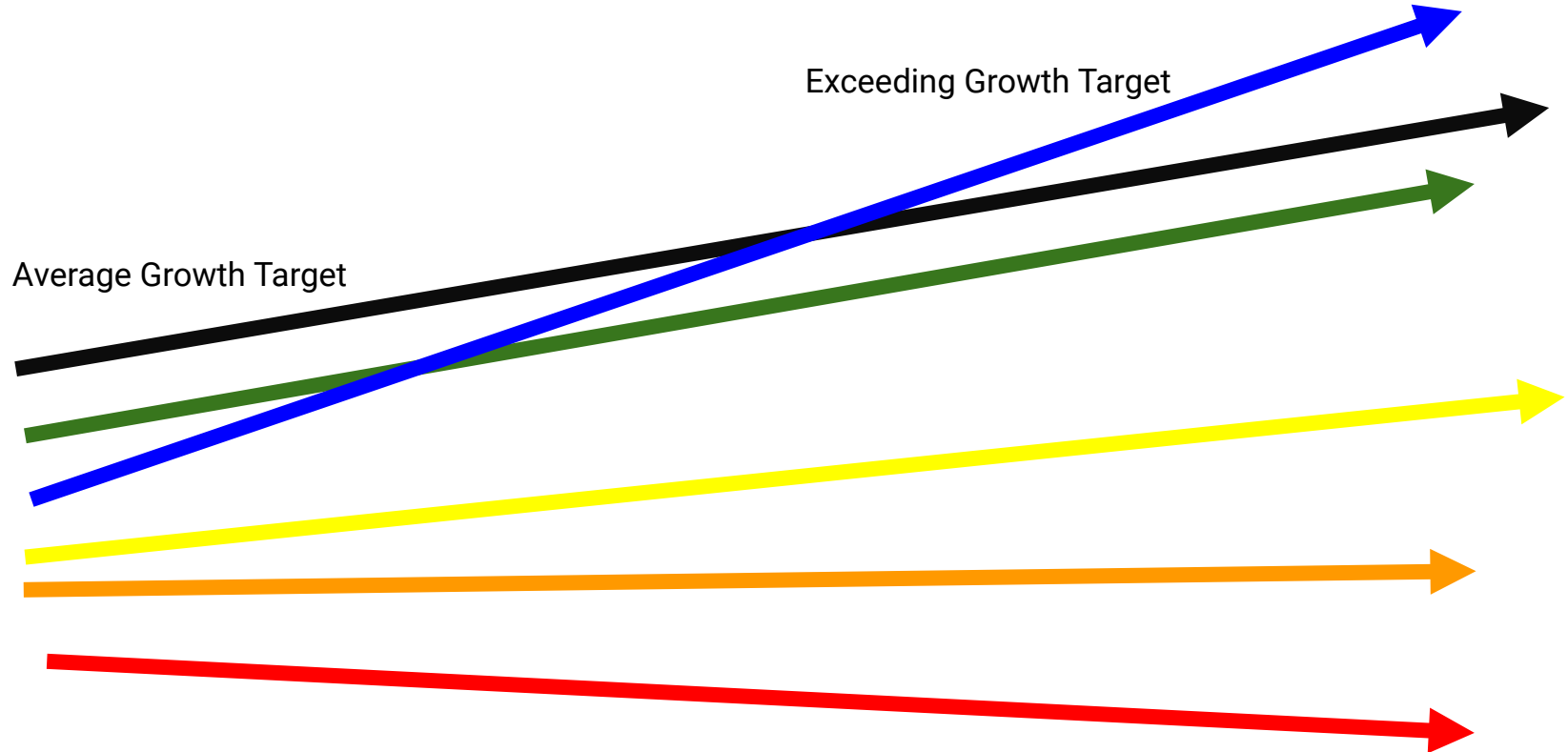
Growth: Measures how much the student has grown in a specific time frame, compared to “typical growth” of a student in their grade and at their achievement level.

Achievement: Measures how a student is performing compared to Alaska State Standards at their grade level. This is measured in a unit called “RIT” and is tied to specific skill groups and standards.

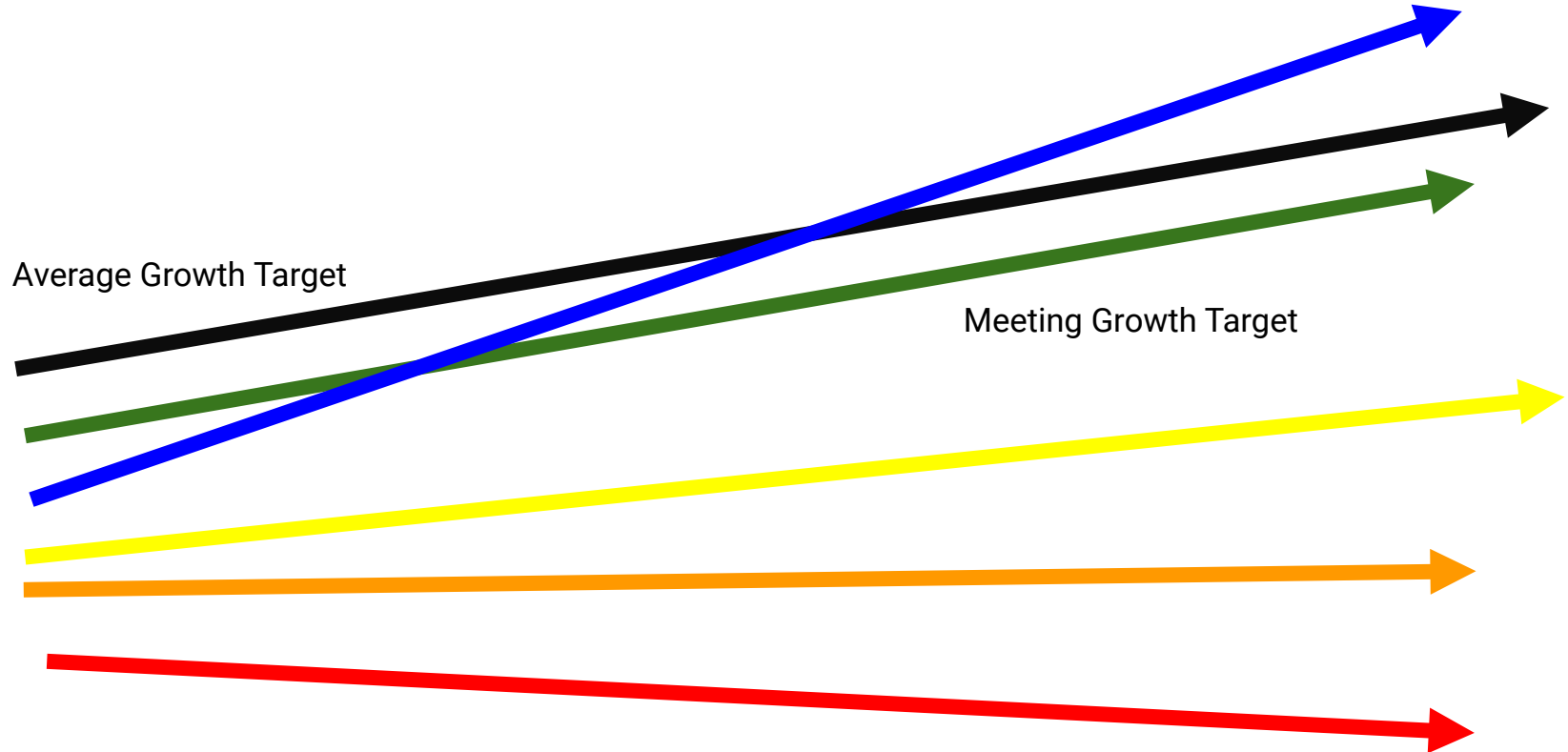
How Growth Data Works



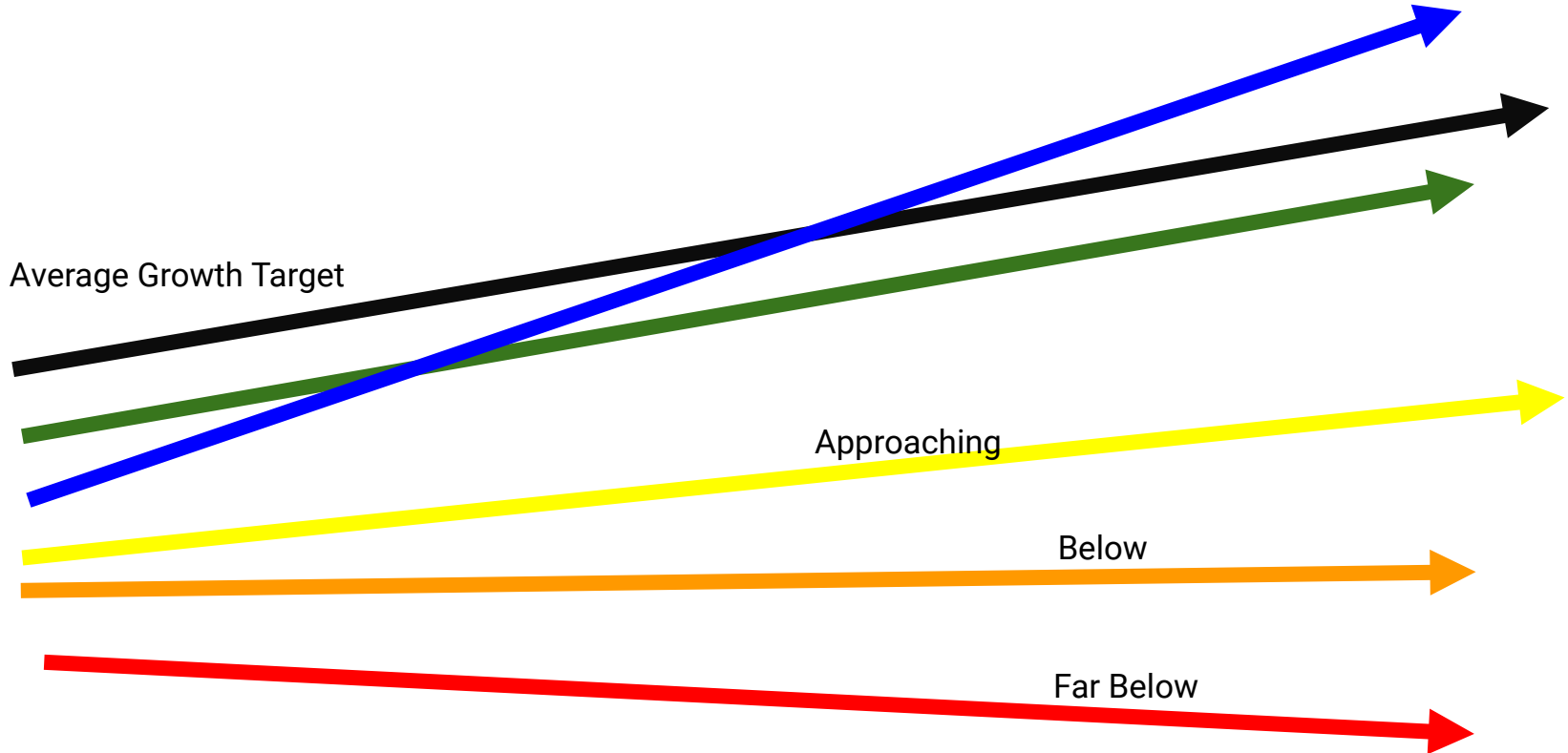
How Growth Data Works



How Growth Data Works



How Growth Data Works



NWEA MAP Reading

District Profile

Growth and Achievement Overview

North Slope Borough School District | Reading

Winter 22-23 to Winter 23-24

Grade		Number of Students i
All Grades	<p>Growth Median and Distribution</p> <p>Achievement Winter 2022-2023 Median and Distribution</p> <p>Achievement Winter 2023-2024 Median and Distribution</p>	831

Percentiles Key ● 1st - 20th ● 21st - 40th ● 41st - 60th ● 61st - 80th ● >80th

Rostered Winter 2024-2025
Tested Winter 2022-2023 - Winter 2023-2024

District Profile

Growth and Achievement Overview

North Slope Borough School District | Reading

Winter 23-24 to Winter 24-25

Grade		Number of Students i
All Grades	<p>Growth Median and Distribution</p> <p>Achievement Winter 2023-2024 Median and Distribution</p> <p>Achievement Winter 2024-2025 Median and Distribution</p>	900

NWEA MAP Reading

Grade 4

102

Growth Median and Distribution



Achievement Fall 2023-2024 Median and Distribution



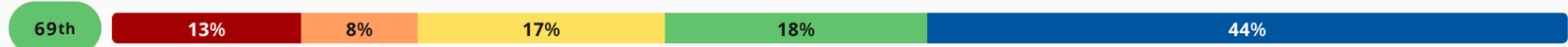
Achievement Fall 2024-2025 Median and Distribution



Grade 9

93

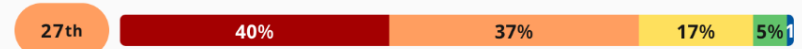
Growth Median and Distribution



Achievement Fall 2023-2024 Median and Distribution



Achievement Fall 2024-2025 Median and Distribution



Grade 10

96

Growth Median and Distribution



Achievement Fall 2023-2024 Median and Distribution

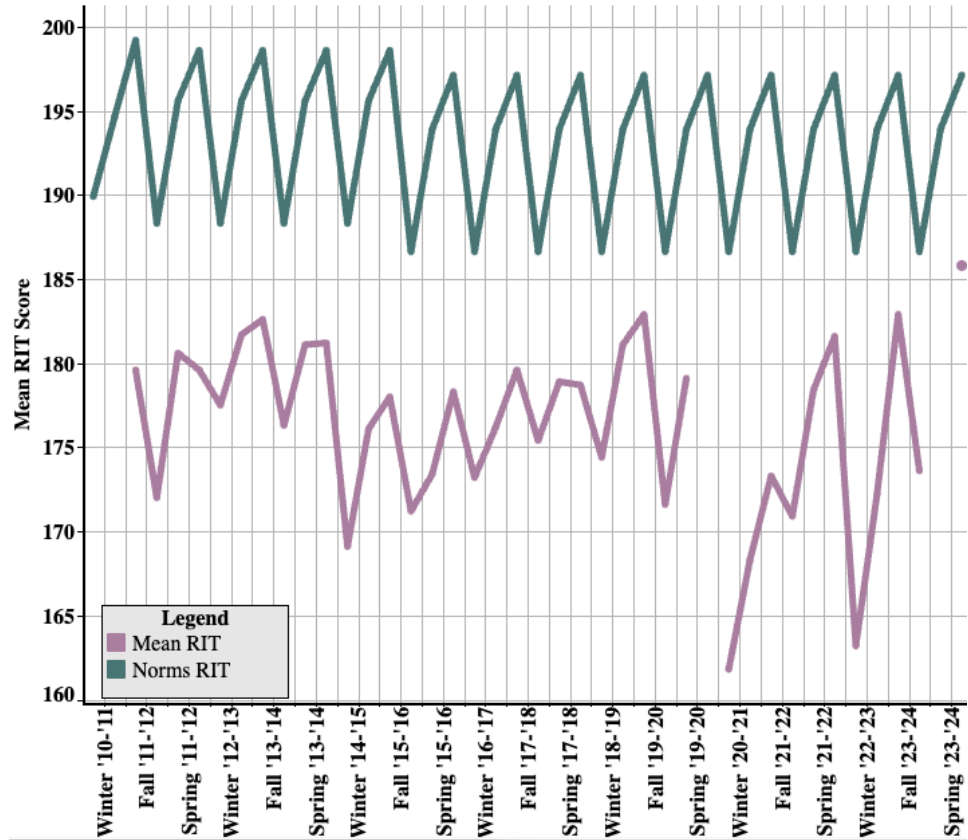


Achievement Fall 2024-2025 Median and Distribution



NWEA MAP Reading

Grade: 3



NWEA MAP Math

District Profile

Growth and Achievement Overview

North Slope Borough School District | Math K-12

Winter 22-23 to Winter 23-24

Grade		Number of Students i
All Grades	<p>Growth Median and Distribution</p> <p>Achievement Winter 2022-2023 Median and Distribution</p> <p>Achievement Winter 2023-2024 Median and Distribution</p>	835

Percentiles Key ● 1st - 20th ● 21st - 40th ● 41st - 60th ● 61st - 80th ● >80th

Rostered Winter 2024-2025

District Profile

Growth and Achievement Overview

North Slope Borough School District | Math K-12

Winter 23-24 to Winter 24-25

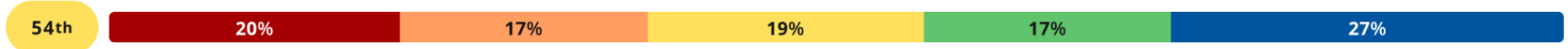
Grade		Number of Students i
All Grades	<p>Growth Median and Distribution</p> <p>Achievement Winter 2023-2024 Median and Distribution</p> <p>Achievement Winter 2024-2025 Median and Distribution</p>	915

NWEA MAP Math

Grade 4

105

Growth Median and Distribution



Achievement Fall 2023-2024 Median and Distribution



Achievement Fall 2024-2025 Median and Distribution



Grade 10

Growth Median and Distribution



Achievement Fall 2023-2024 Median and Distribution

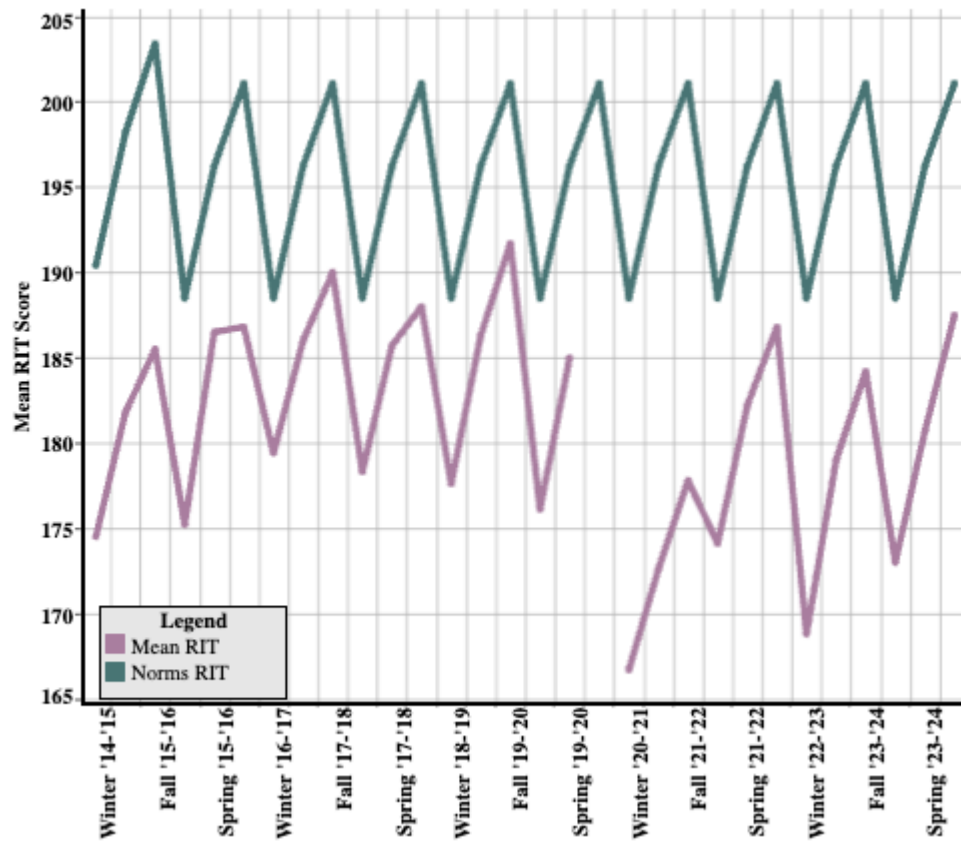


Achievement Fall 2024-2025 Median and Distribution



NWEA MAP Math

Grade: 3



Intervention Services

- Rebuild of the District MTSS (Multi-tiered System of Support) plan and procedures.
- Inclusion of intervention specialists at all sites K-8.

Systems	Attendance	Resources	Instruction
<ul style="list-style-type: none">- RTI/MTSS teams and process in place- Quality Assessments used in a balanced way	<ul style="list-style-type: none">- Interventions including incentives- Increased community messaging	<ul style="list-style-type: none">- High-quality, evidence - based core materials- Appropriate intervention tools and supplemental materials	<ul style="list-style-type: none">- High-quality, culturally responsive tier 1 instruction- Access to grade level standards- Differentiation and scaffolding