

Parkrose School District Attendance

12/16/2024

AGENDA

01 **BACKGROUND**
Definition

04 **Student Voice**
Opinion

02 **Local Data**
District Data

05 **CLOSING**
Questions

03 **Root Cause**
Trends

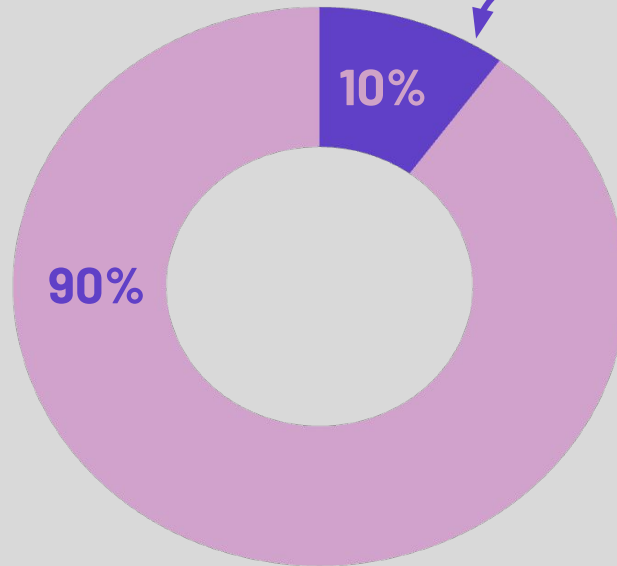
01

Background

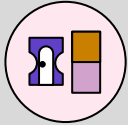
Chronic Absenteeism & Regular Attenders

Chronic Absenteeism = Missing 10% of the school year

REGULAR ATTENDERS
Students who attended more than 90% of their enrolled school days.



Why Attendance Matters



1 in 6 Oregon children is chronically Absent

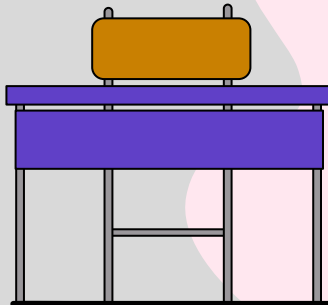


In 2023-23, 47% of PSD students were chronically absent

Why Attendance Matters

Elementary School

Students who attend regularly in grades K-3 are more likely to read on grade level



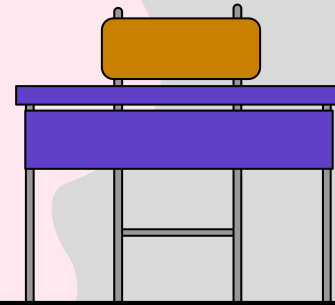
Middle School

By 6th grade, absenteeism is one of three signs that a student may drop out of high school



High School

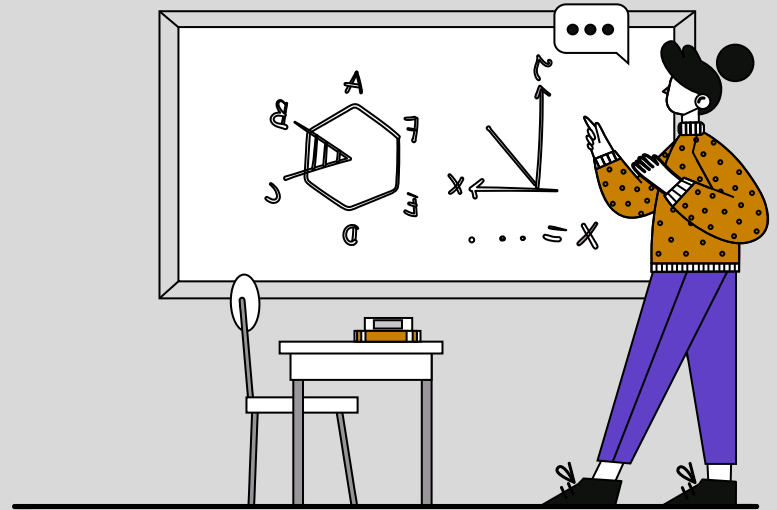
By 9th grade, attendance is a better predictor of graduation rates than 8th grade test scores



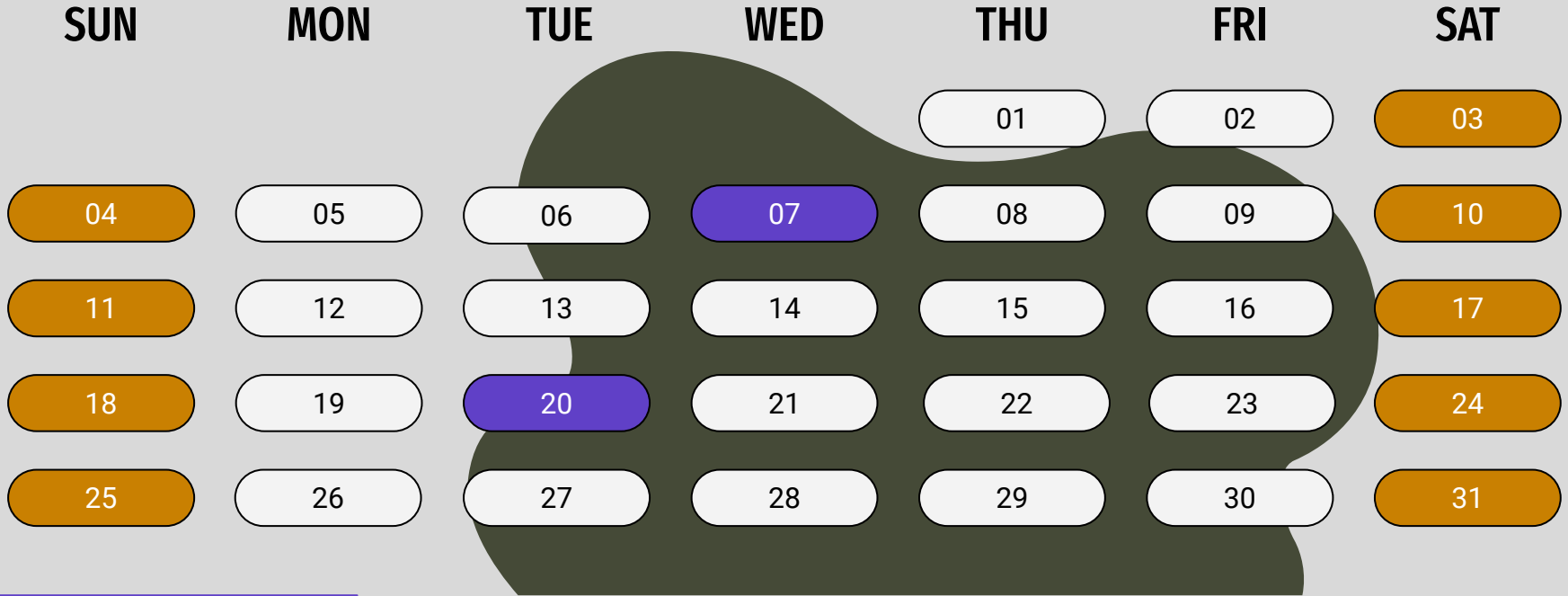
It All Adds Up

Every day of school counts towards our student's journey of growth and discovery

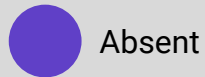
Missing 10% of school can lower achievement for students



Monthly Attendance



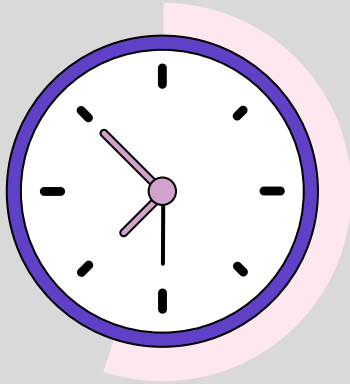
Two days per month = 10%



18 days per year

Time Adds Up

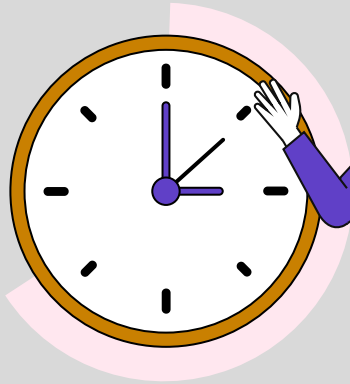
10%



18 Days

108 hours
6,480 minutes
126 periods

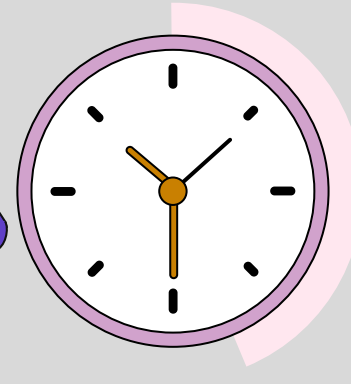
25%



45 Days

216 hours
12,960 minutes
315 periods

50%



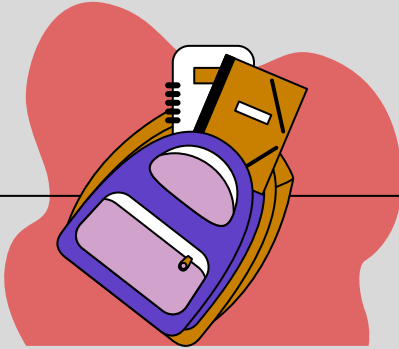
90 Days

540 hours
32,400 minutes
630 periods



Why Attendance Matters

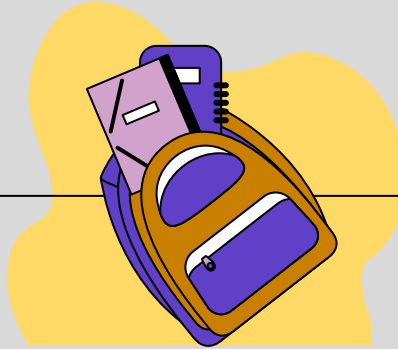
+18 days



Chronic Absences

Greatest risk of falling behind and 20% less likely to graduate from high school

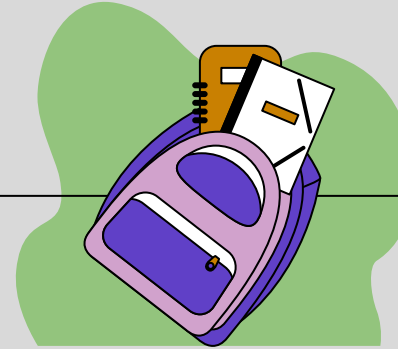
10 to 17 days



Warning

15 absences per year = 1 full school year missed by 12th grade

9 or fewer days



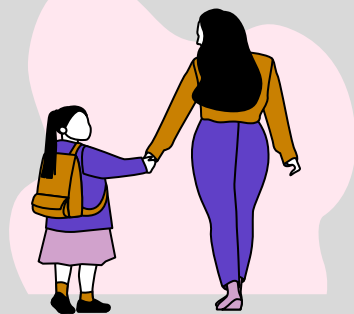
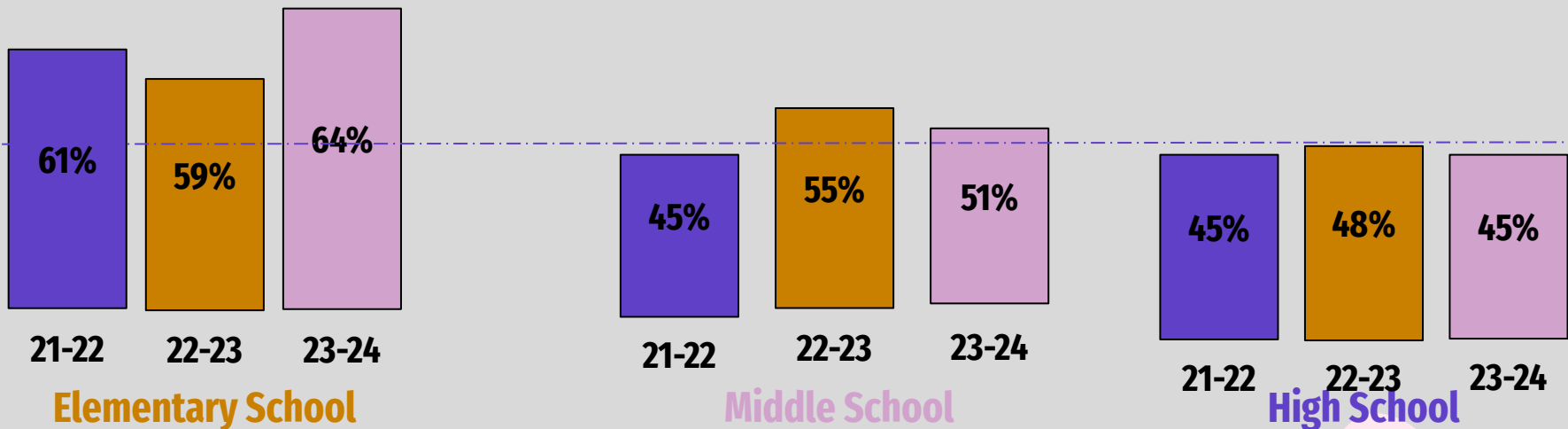
Good Attendance

Best chance to develop grade level skills and success now and in the future

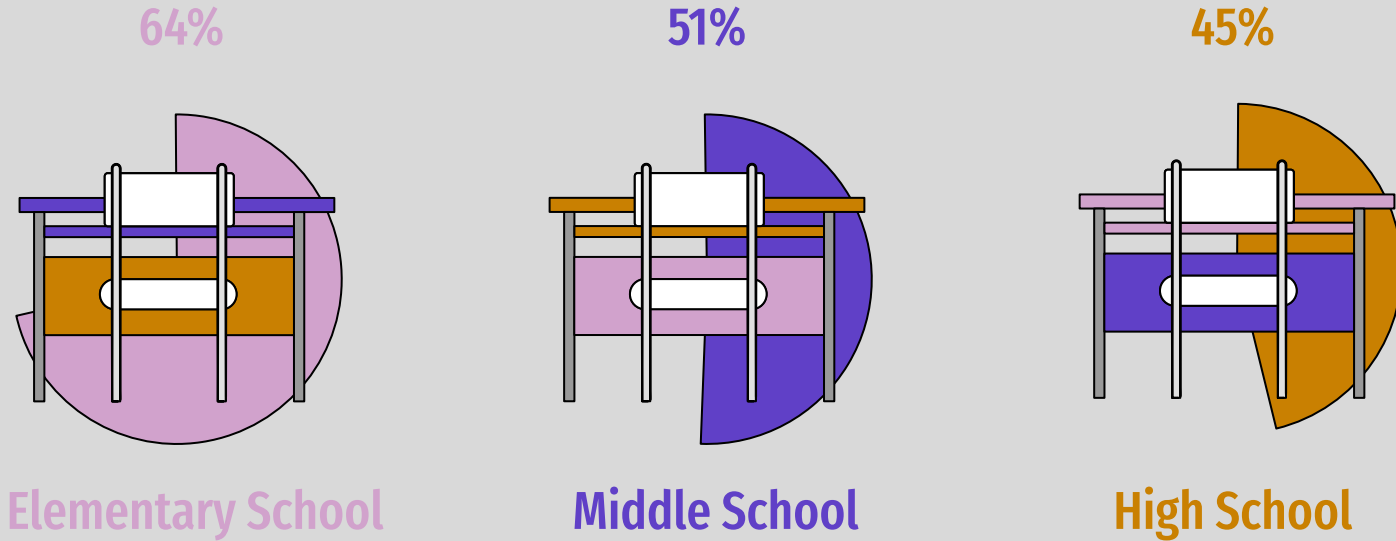
02

Local Data

Attendance Over Time 2021-24 - Regular Attenders

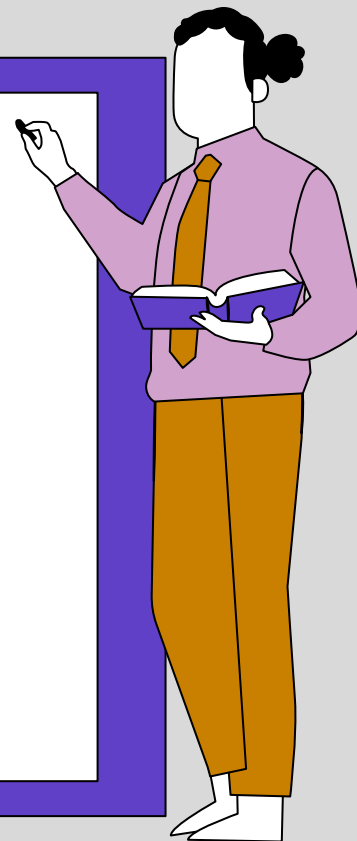
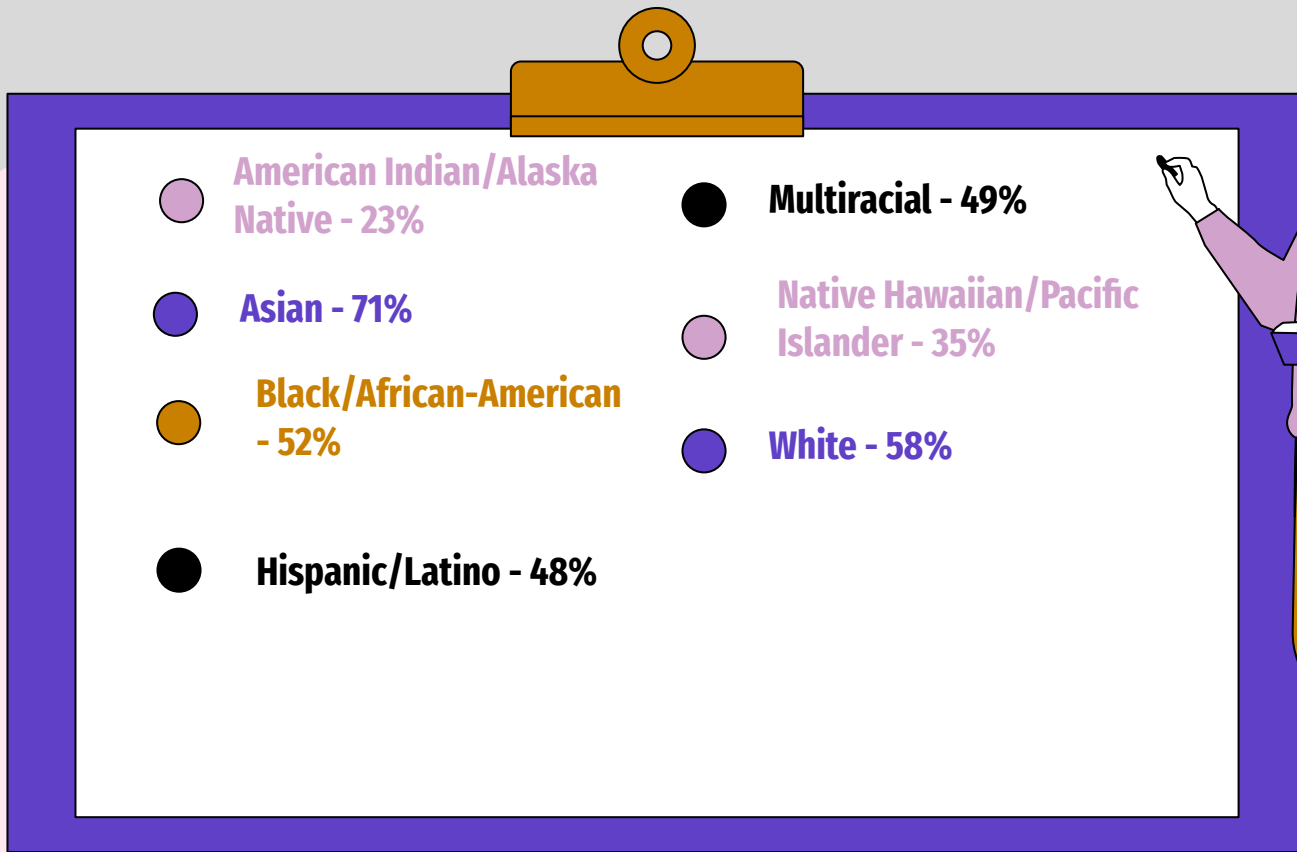


2023-24 Parkrose Regular Attenders Rate



Percentage of students attending for more than 90 percent of their enrolled school days

2023-24 Ethnicity Regular Attenders Rate



2023-24 Grade Level Average Attendance Rate

Kindergarten

88.1%

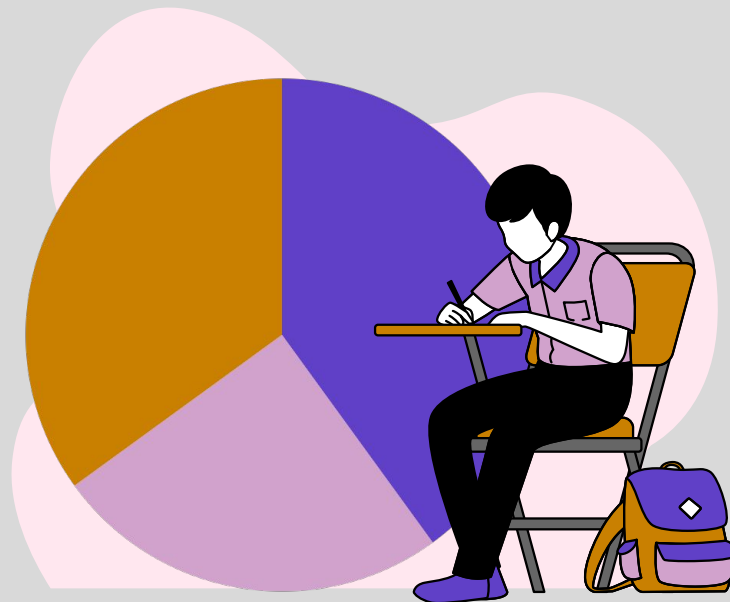
1st Grade 89.1%

2nd Grade 89.8%

3rd Grade 89.9%

4th Grade 90.7%

5th Grade 88.9%



6th Grade 88.5%

7th Grade 85.6%

8th Grade 85.2%

9th Grade 84.2%

10th Grade 81.7%

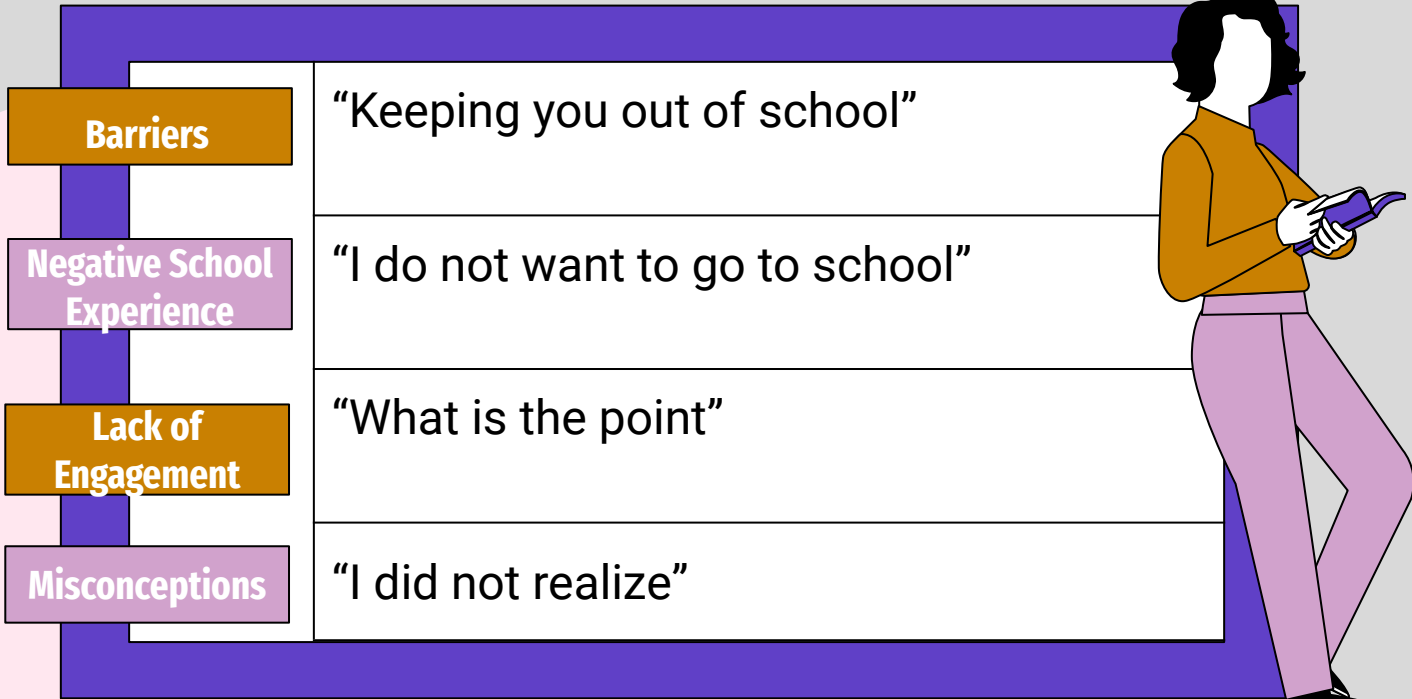
11th Grade 82.1%

12th Grade 82.4%

03

Root Cause

Root Cause of Chronic Absenteeism



Local Context

What Brings You to School?

- Friends
- Future & Grades
- Sports
- Not Falling Behind
- Parents
- School Events
- Support System
- Clubs
- Resources
- School Culture
- School Programs
- Classes
- Learning
- No Where to Go
- The Law



What Keeps You Away

- Stress & Mental Health
- Teachers
- Peers
- Transportation
- Health
- Not Enough Sleep
- Taking care of family
- Job
- Burn Out
- Block Days
- Threats
- College Planning
- Moved
- Unmotivated
- Food
- Environment

04

Student Voice

Student Opinion

What are the biggest reasons you miss school?

01

What makes it difficult for you to come to school?

02

What would make you more likely to attend school regularly?

03

What kind of support would be most helpful to you and your peers?

04



05

Closing

Questions

