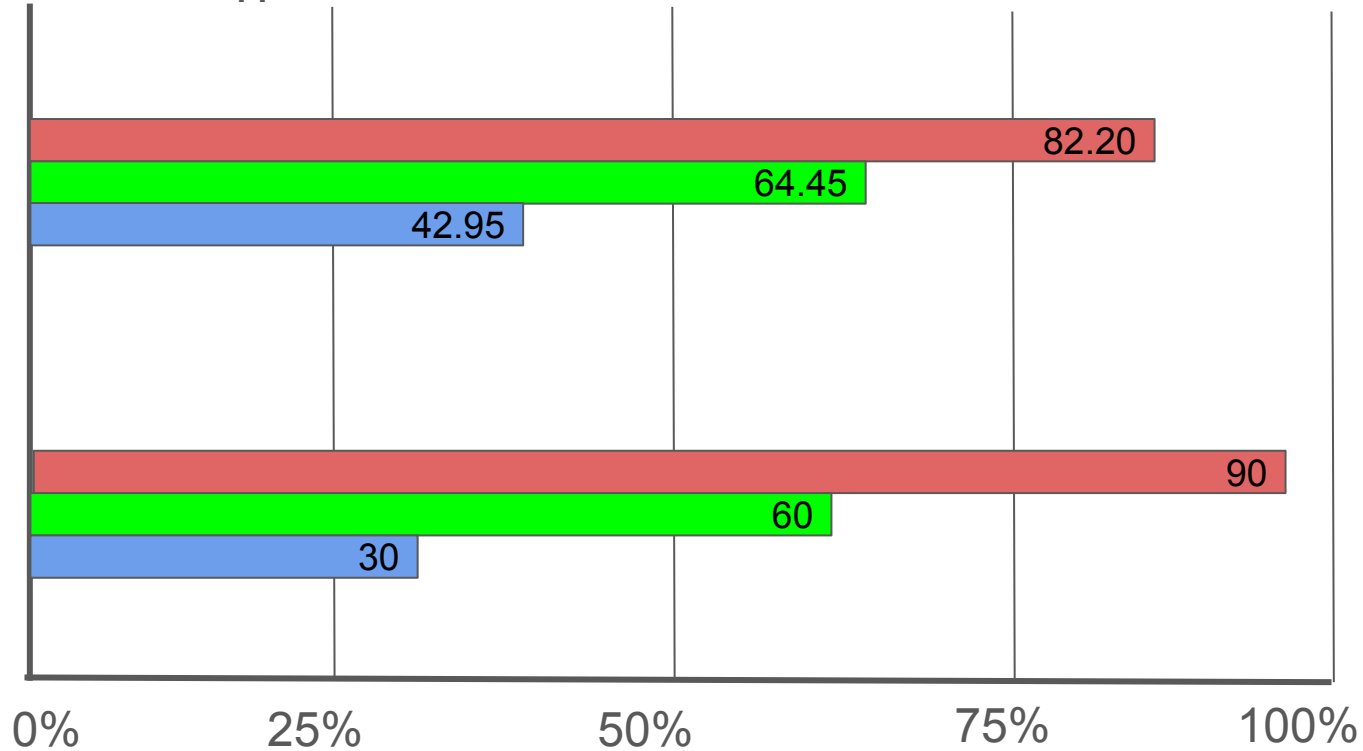


2nd RLA Common Assessments

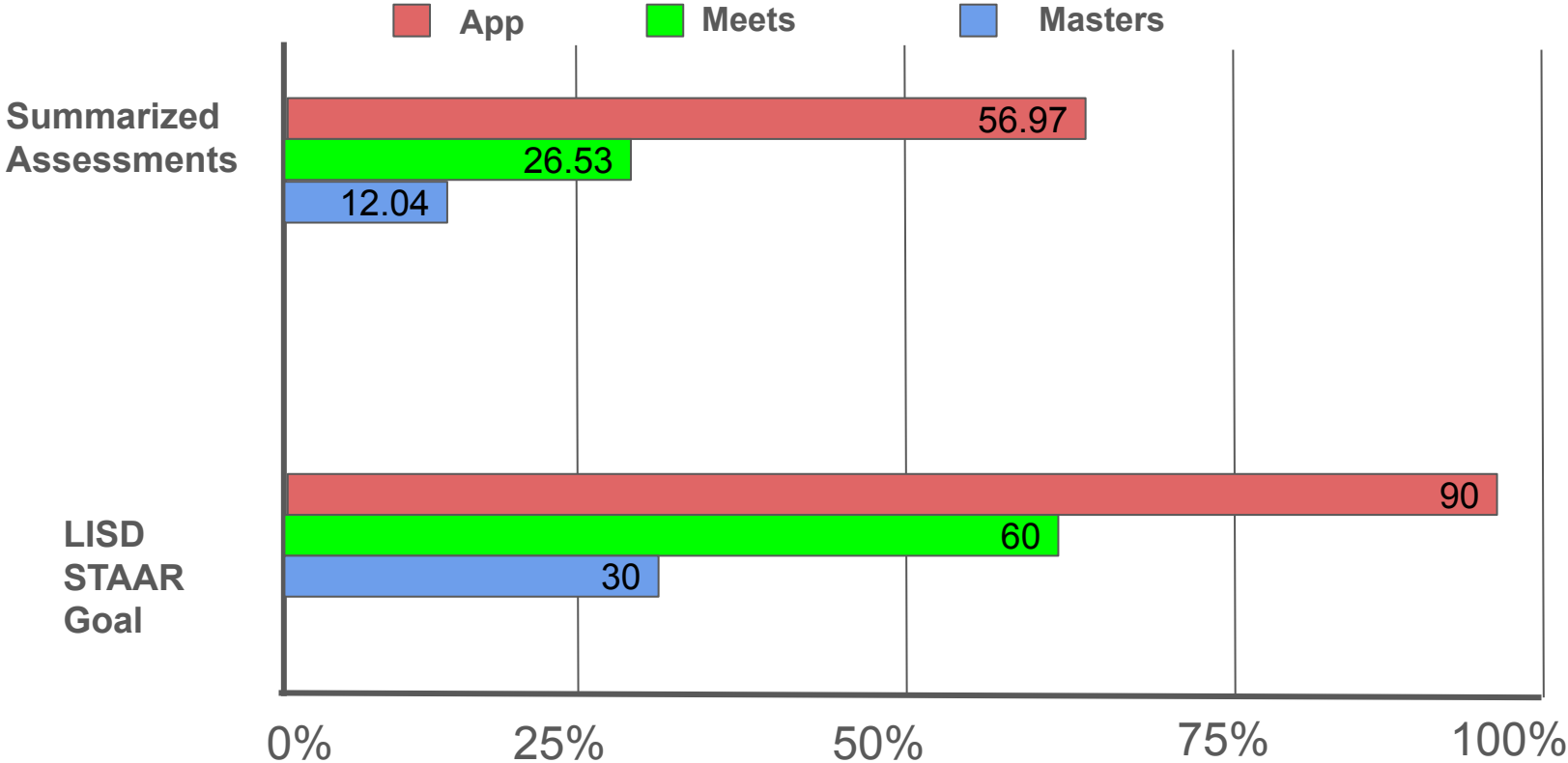
App Meets Masters

Summarized
Assessments

LISD
STAAR
Goal



3rd RLA Common Assessments



4th RLA Common Assessments

App Meets Masters

Summarized
Assessments

57.21

21.78

7.5

LISD
STAAR
Goal

90

60

30

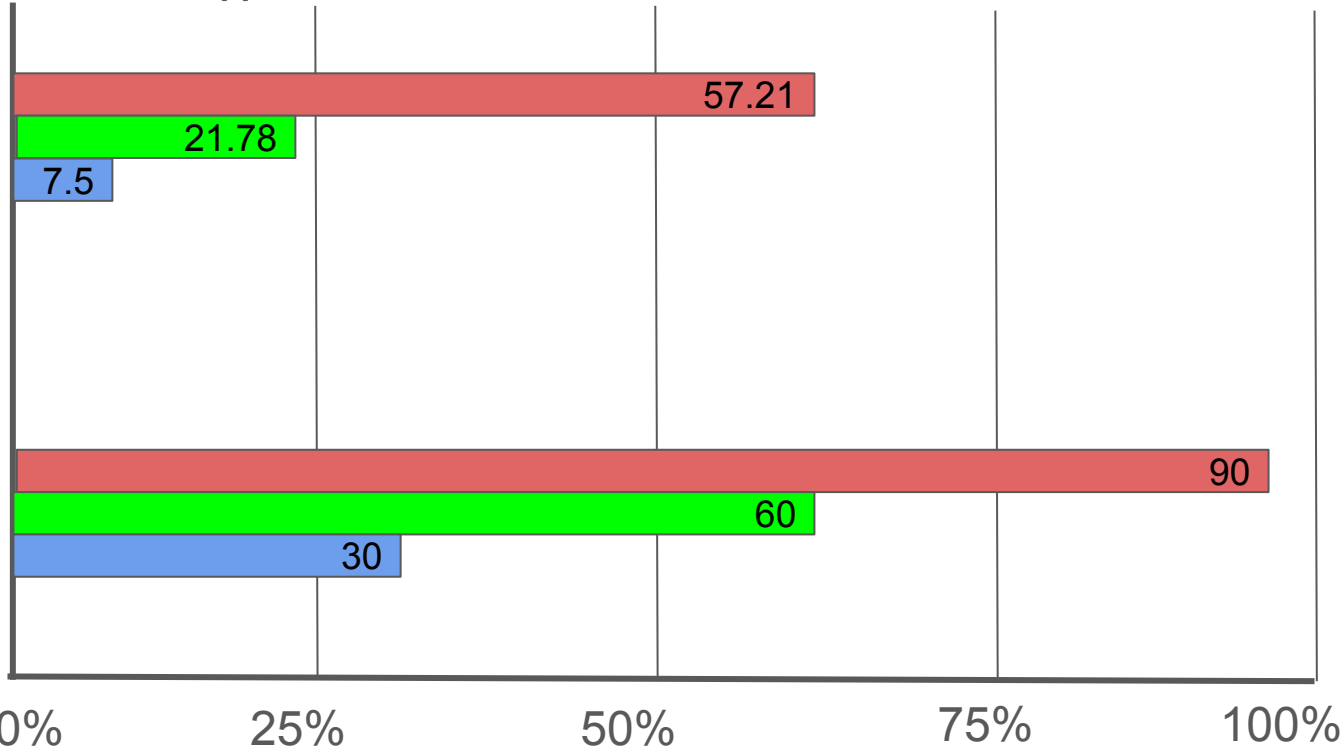
0%

25%

50%

75%

100%

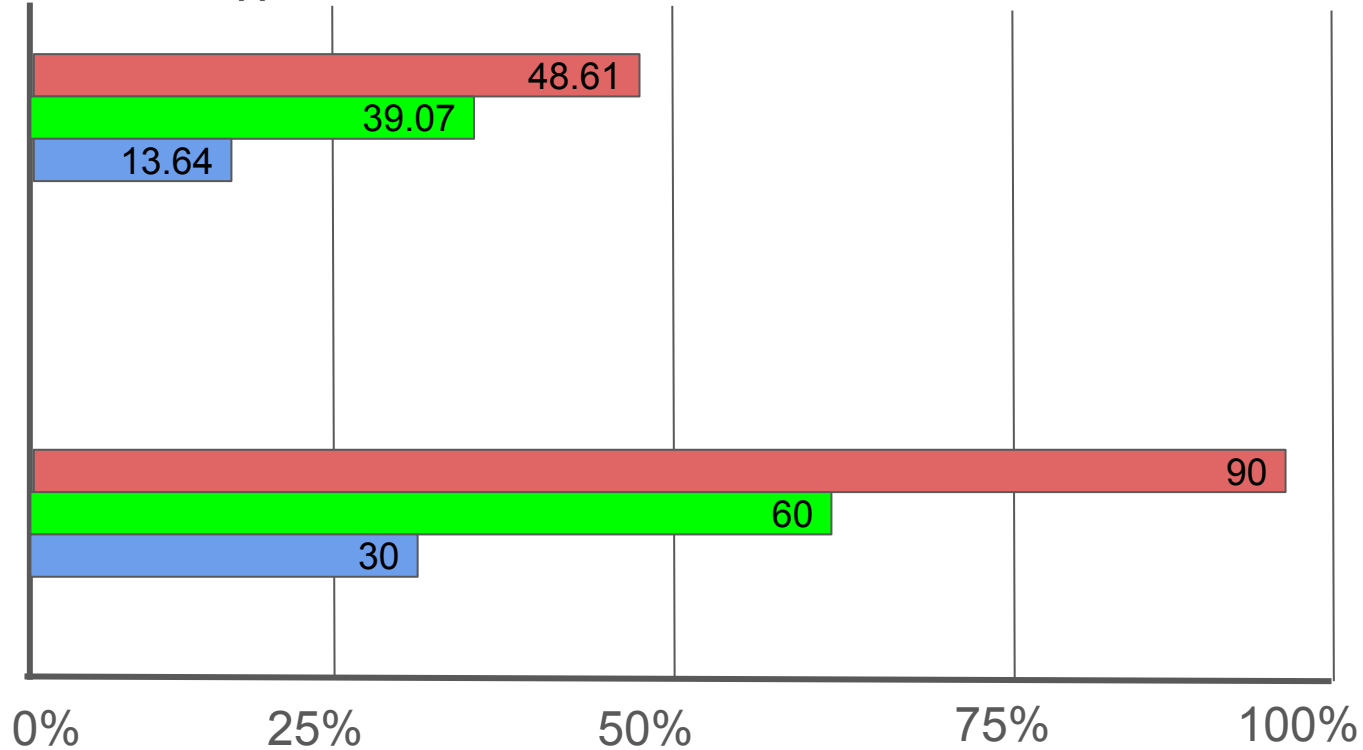


5th RLA Common Assessments

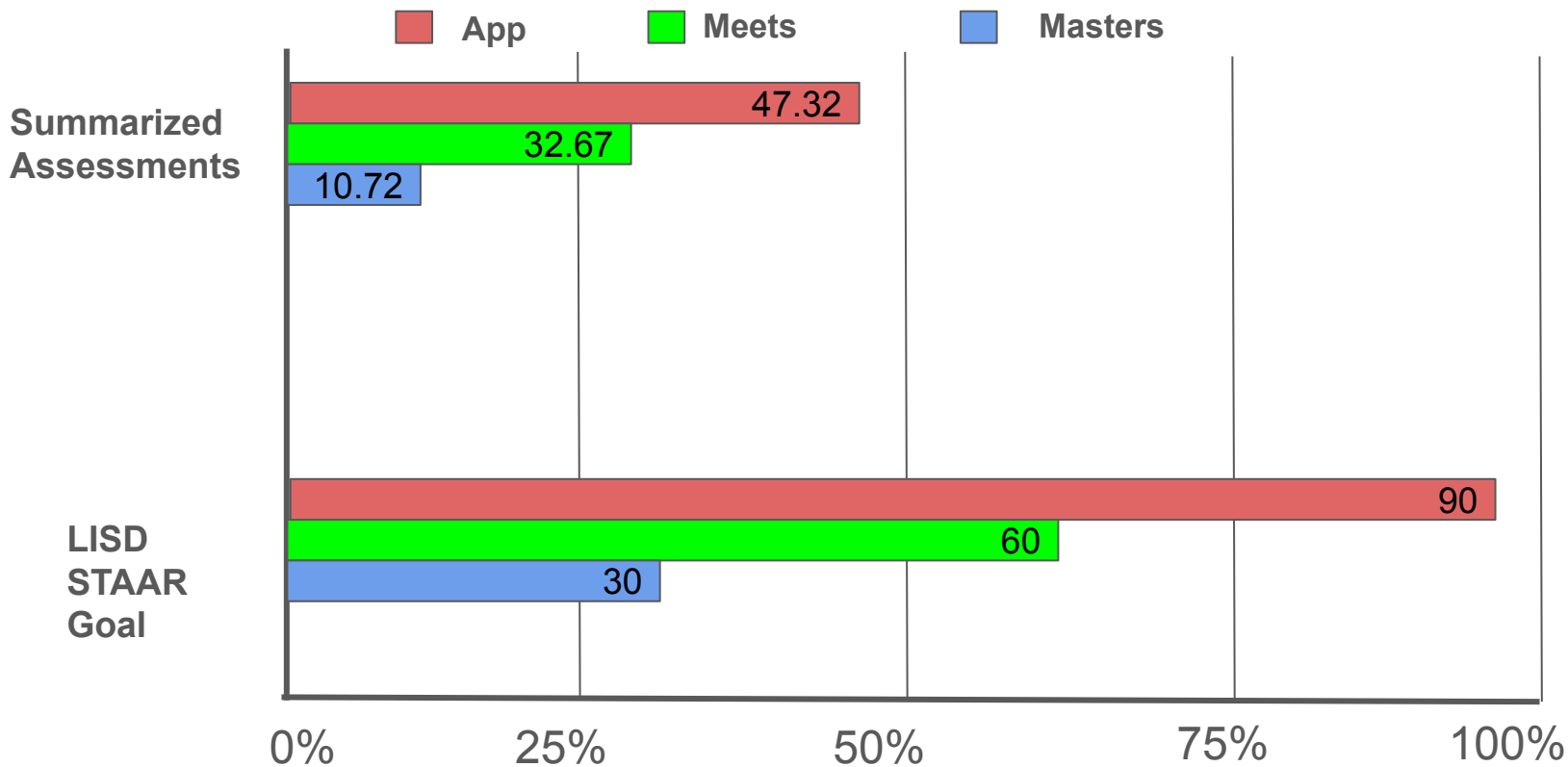
App Meets Masters

Summarized
Assessments

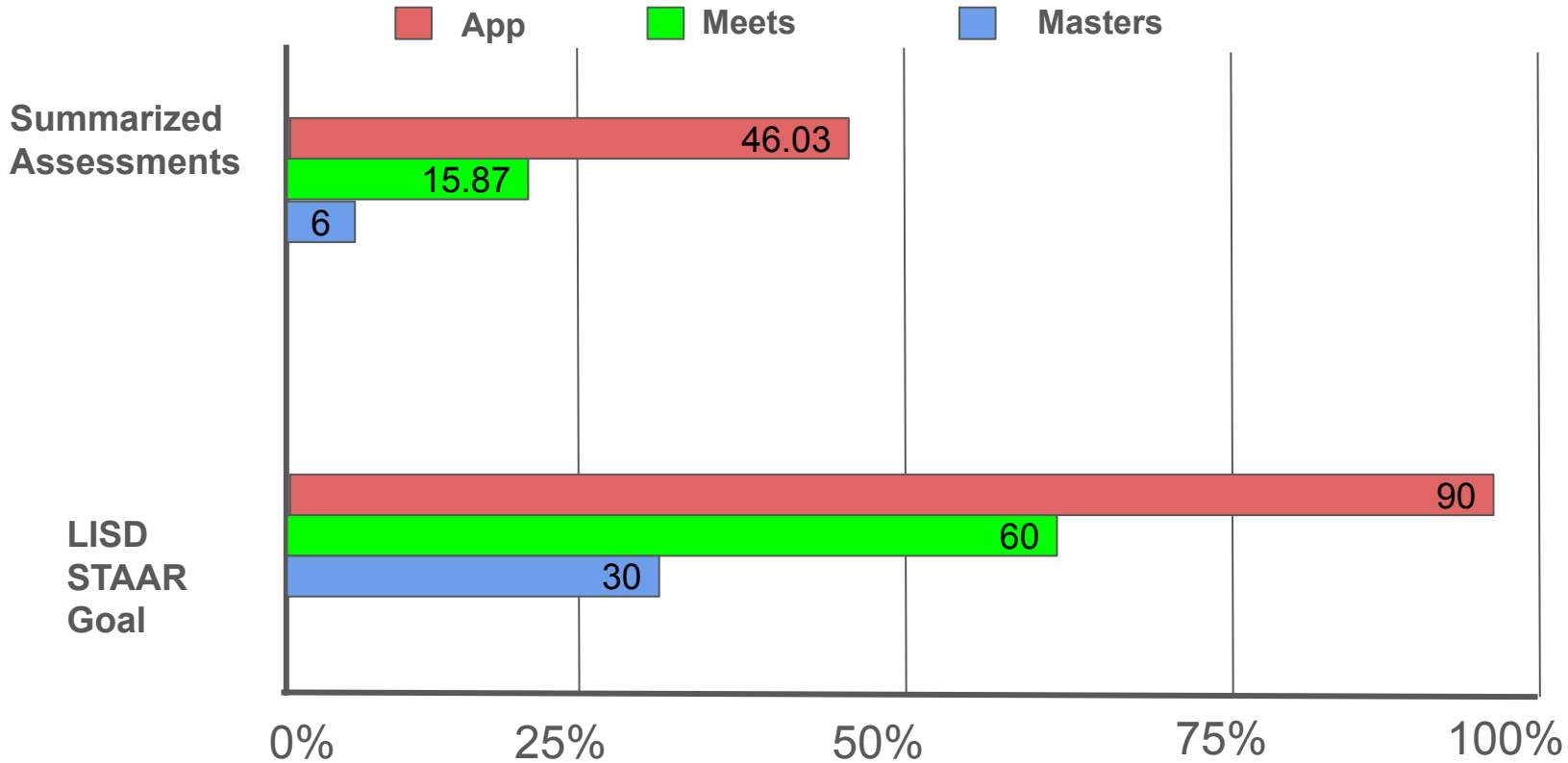
LISD
STAAR
Goal



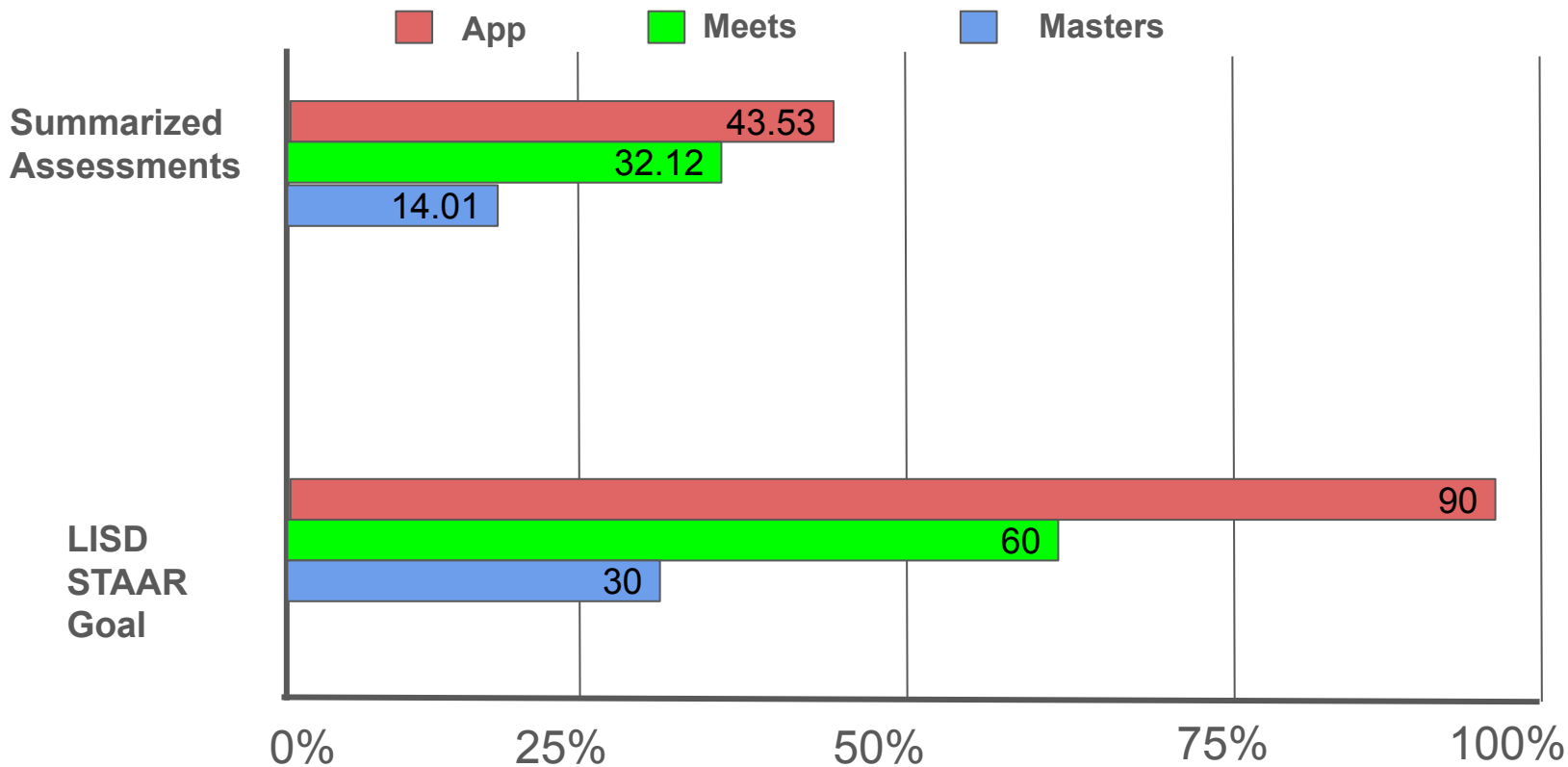
6th RLA Common Assessments



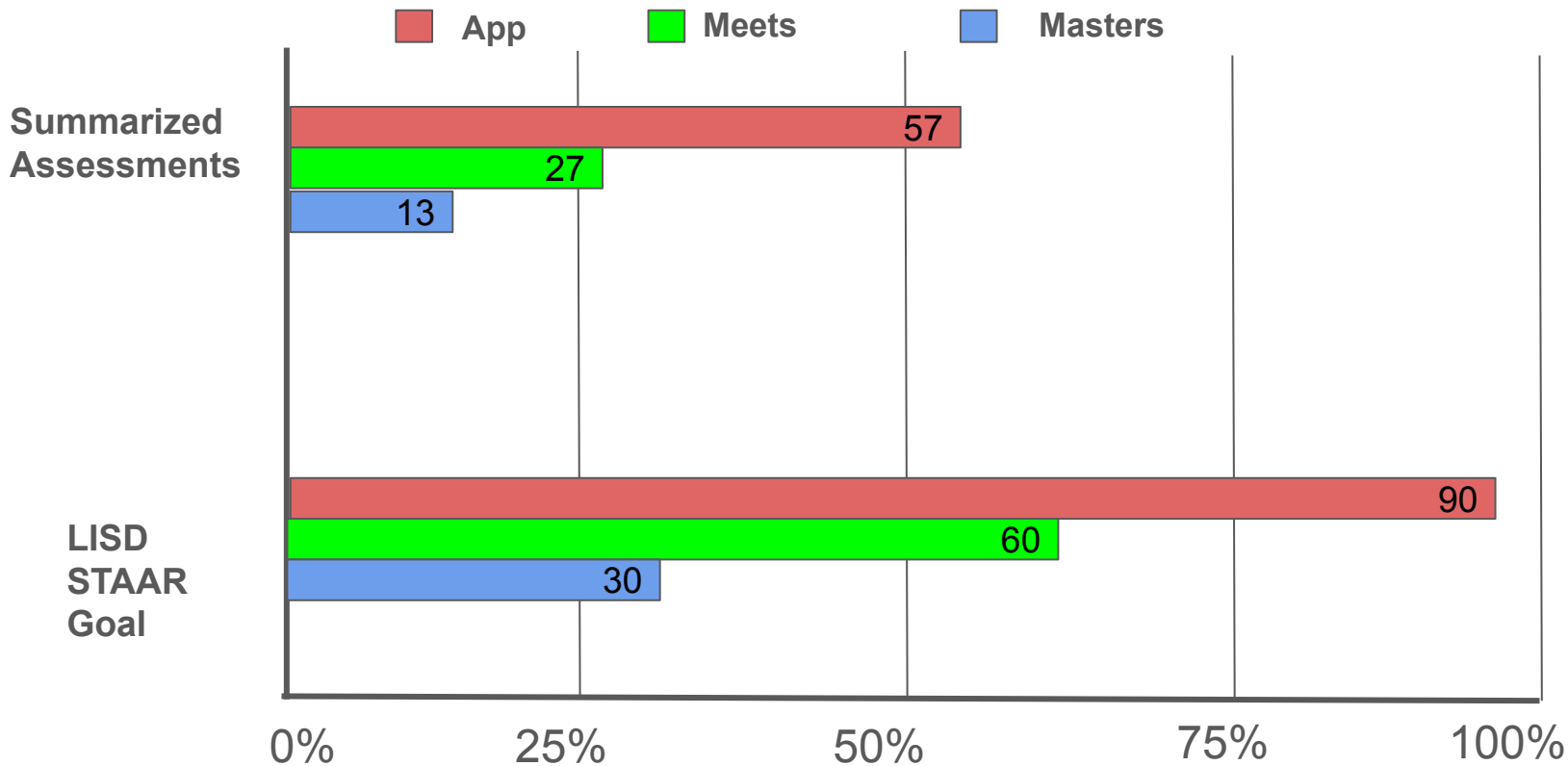
6th Social Studies Common Assessments



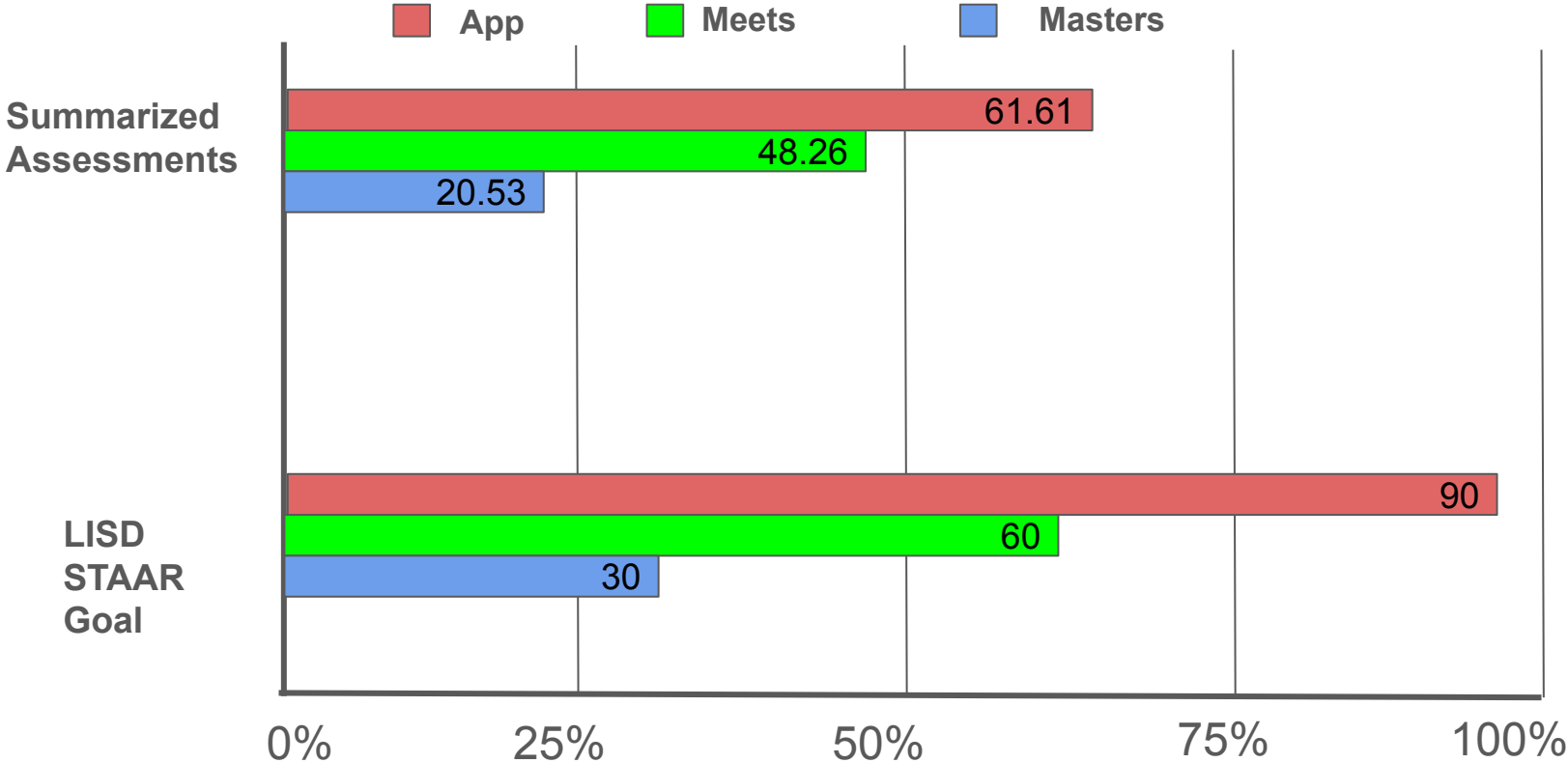
7th RLA Common Assessments



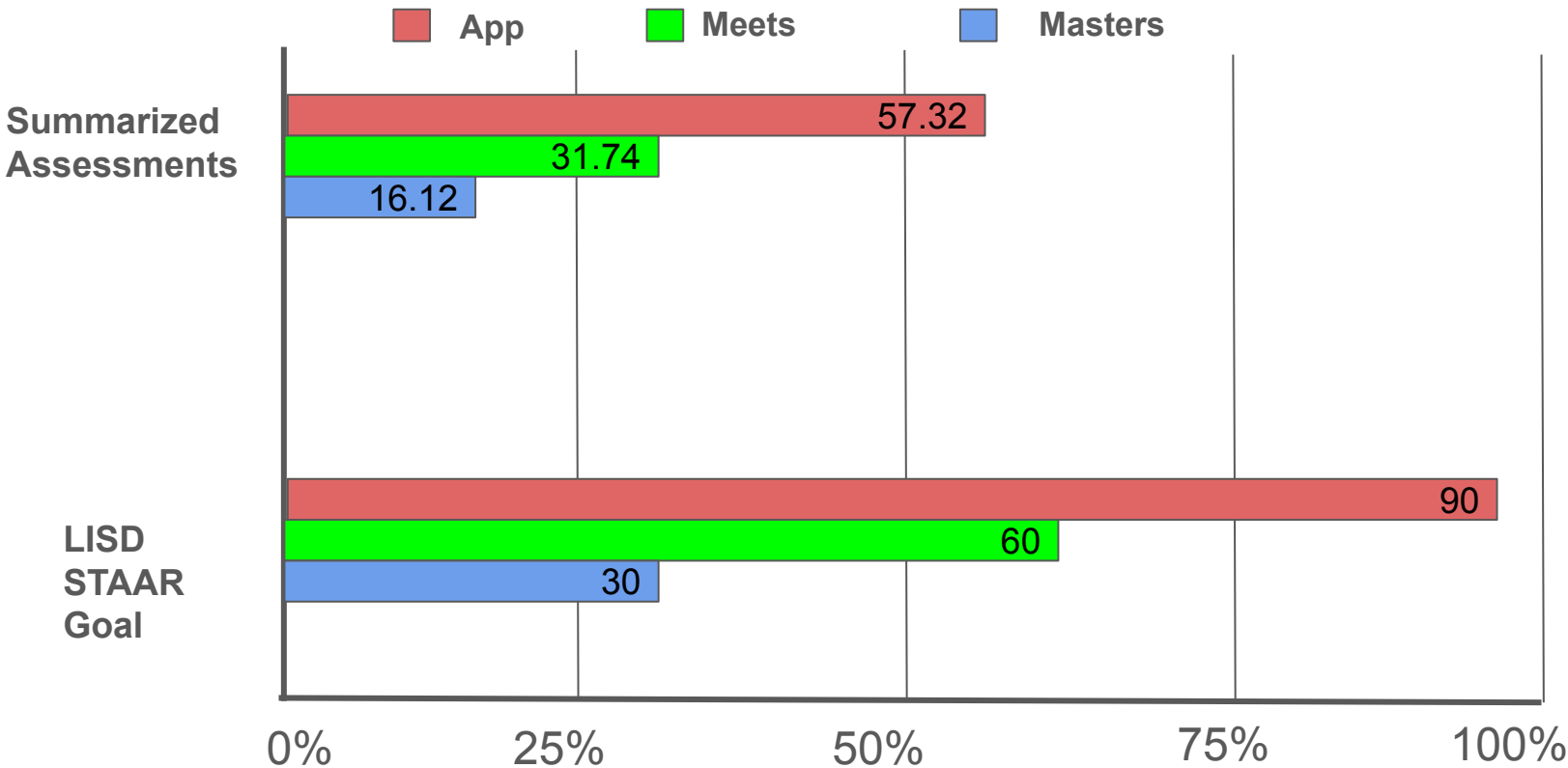
7th Social Studies Common Assessments



8th RLA Common Assessments



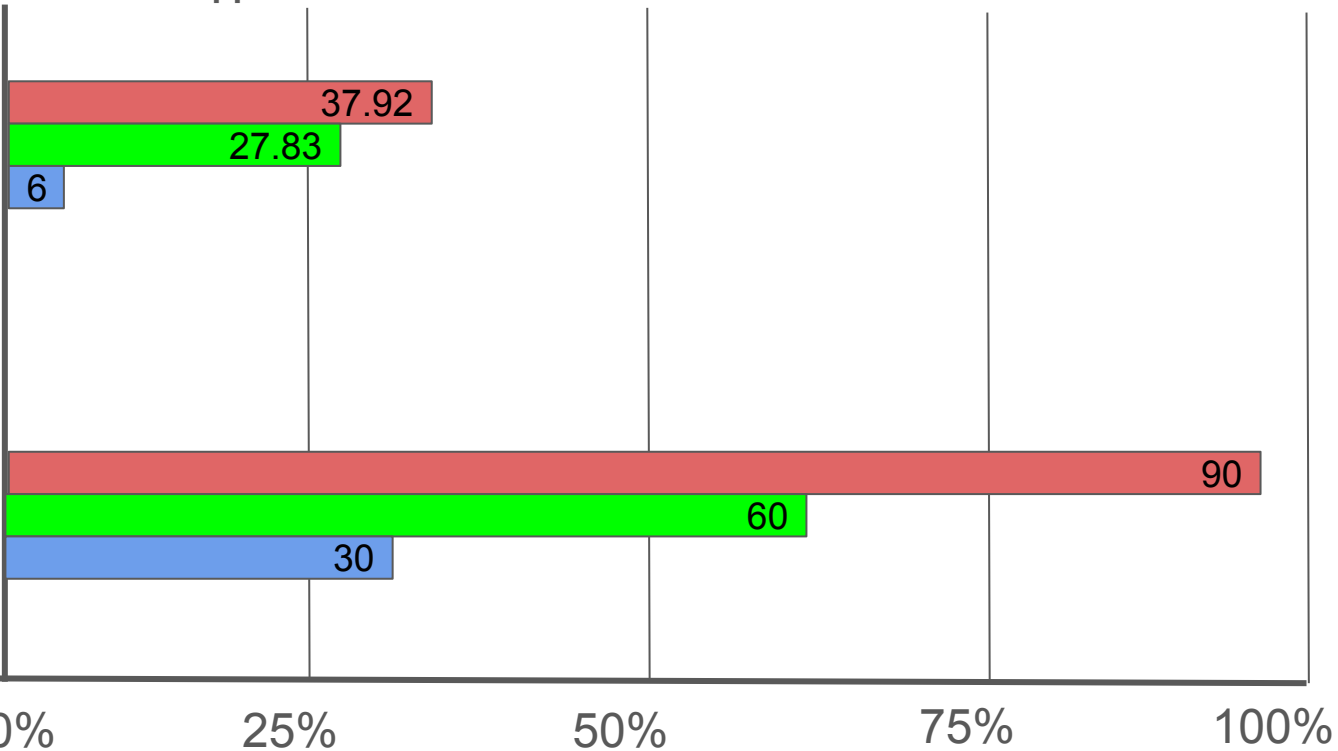
8th Social Studies Common Assessments



English 1 Common Assessments

App Meets Masters

Summarized
Assessments



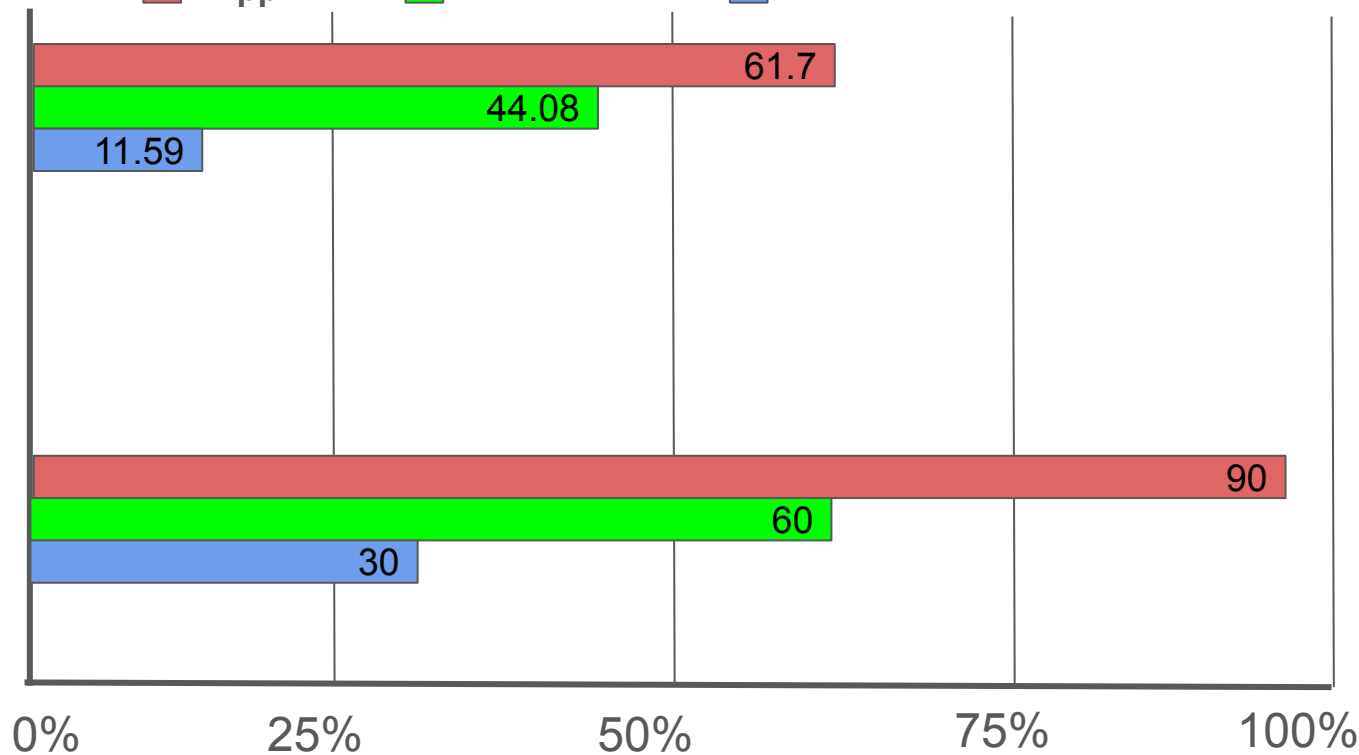
LISD
STAAR
Goal

English 2 Common Assessments

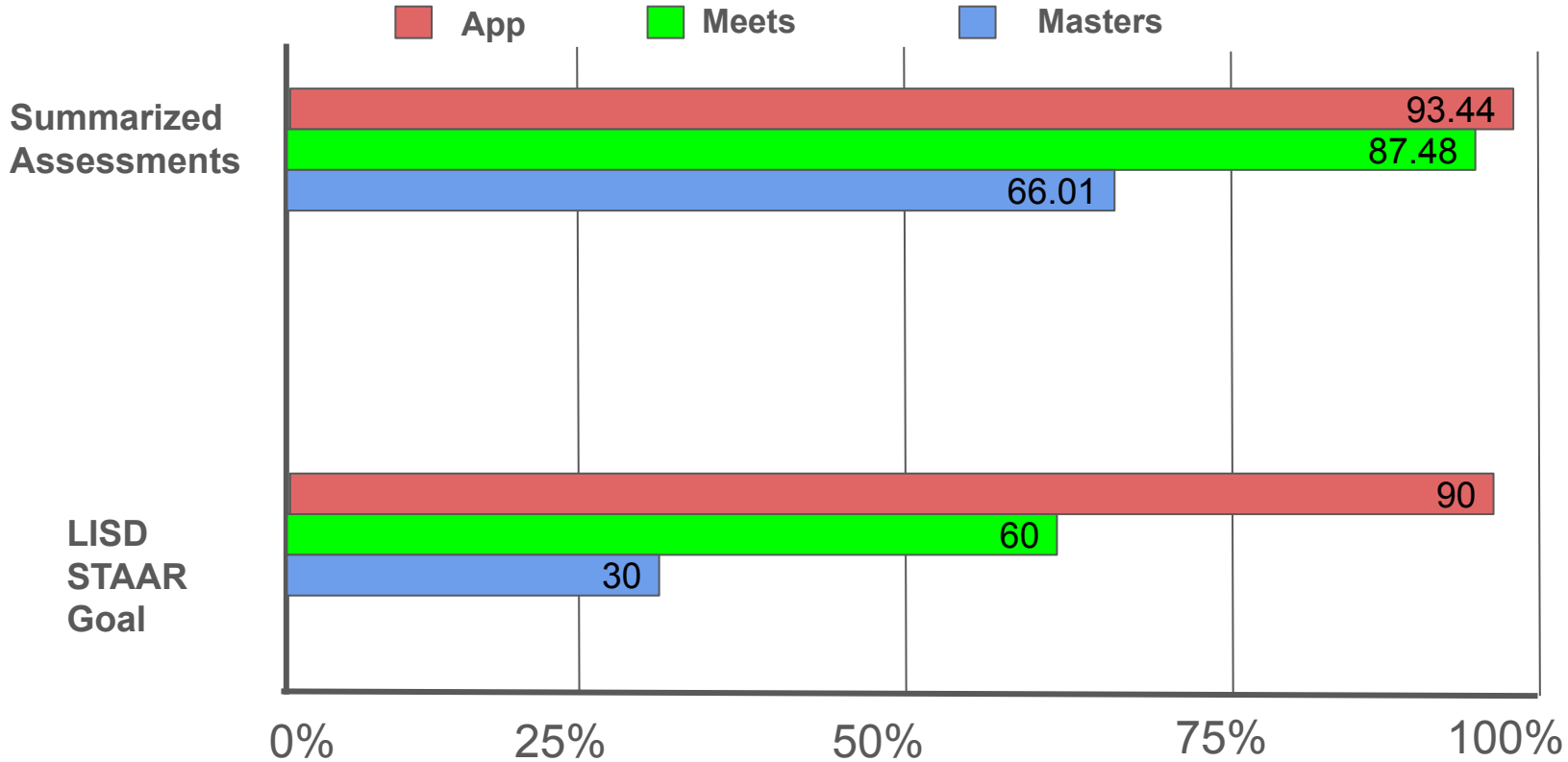
App Meets Masters

Summarized
Assessments

LISD
STAAR
Goal

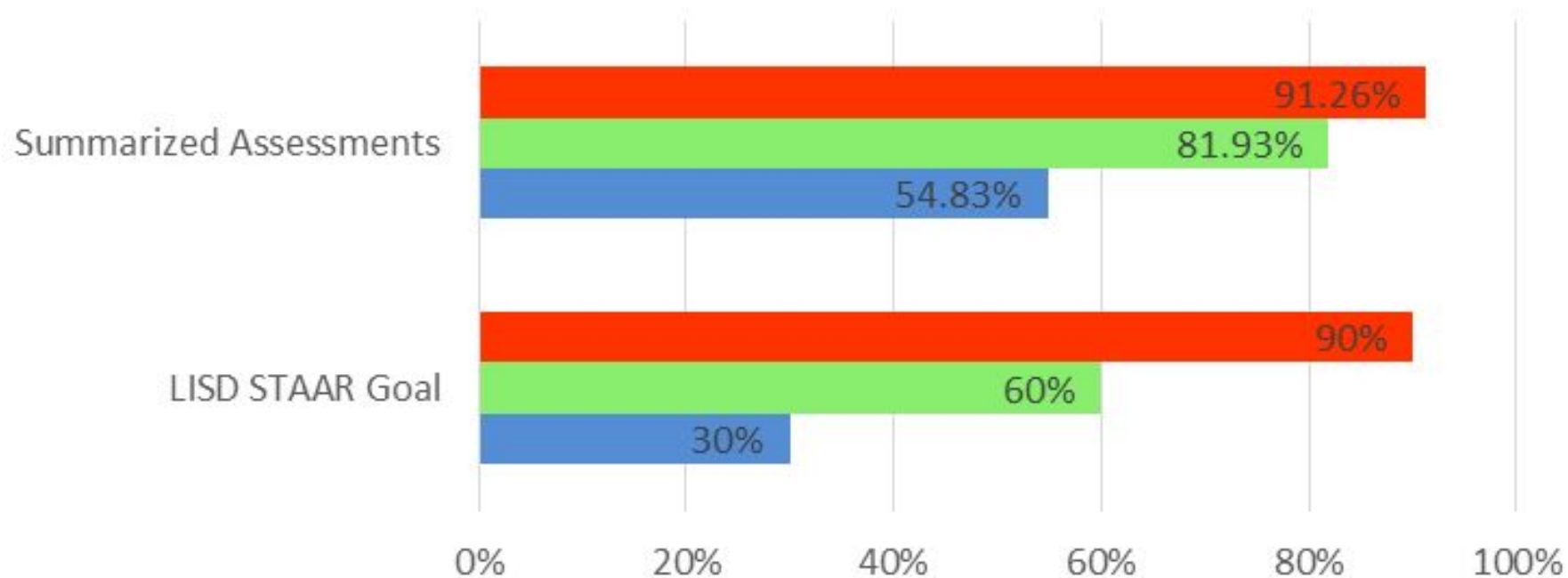


US History Common Assessments



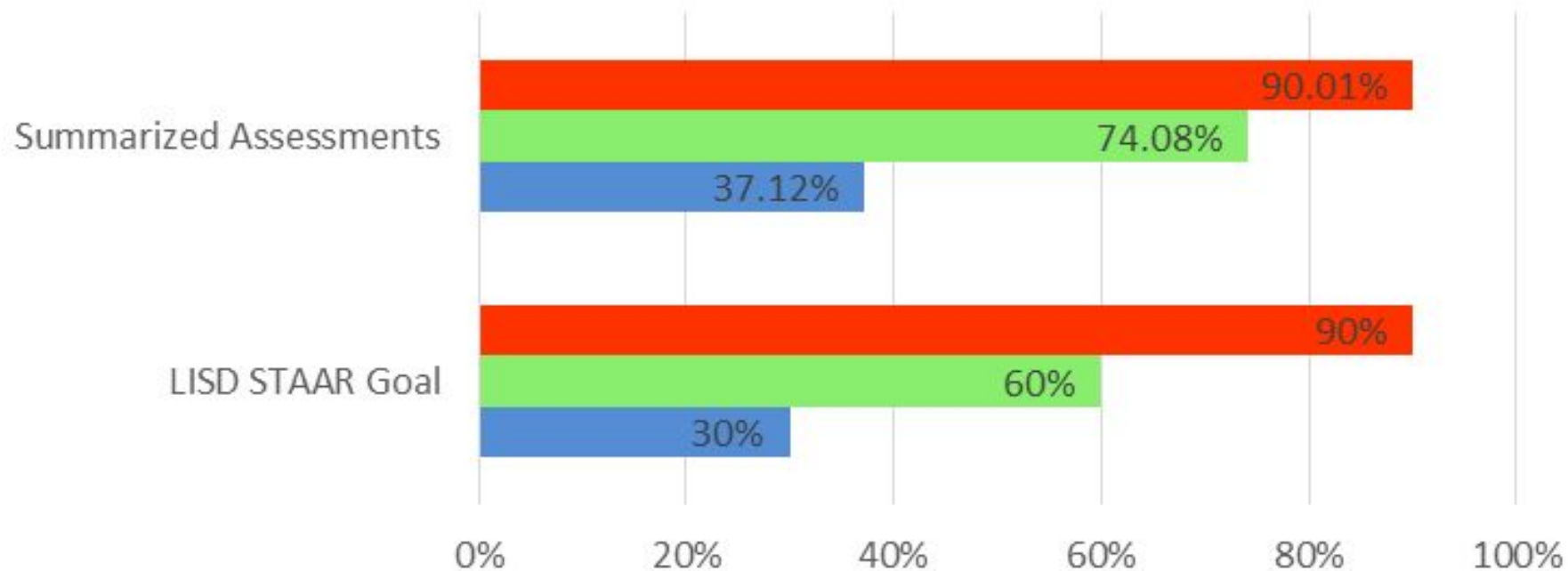
Kindergarten Math Common Assessments

Approaches Meets Masters



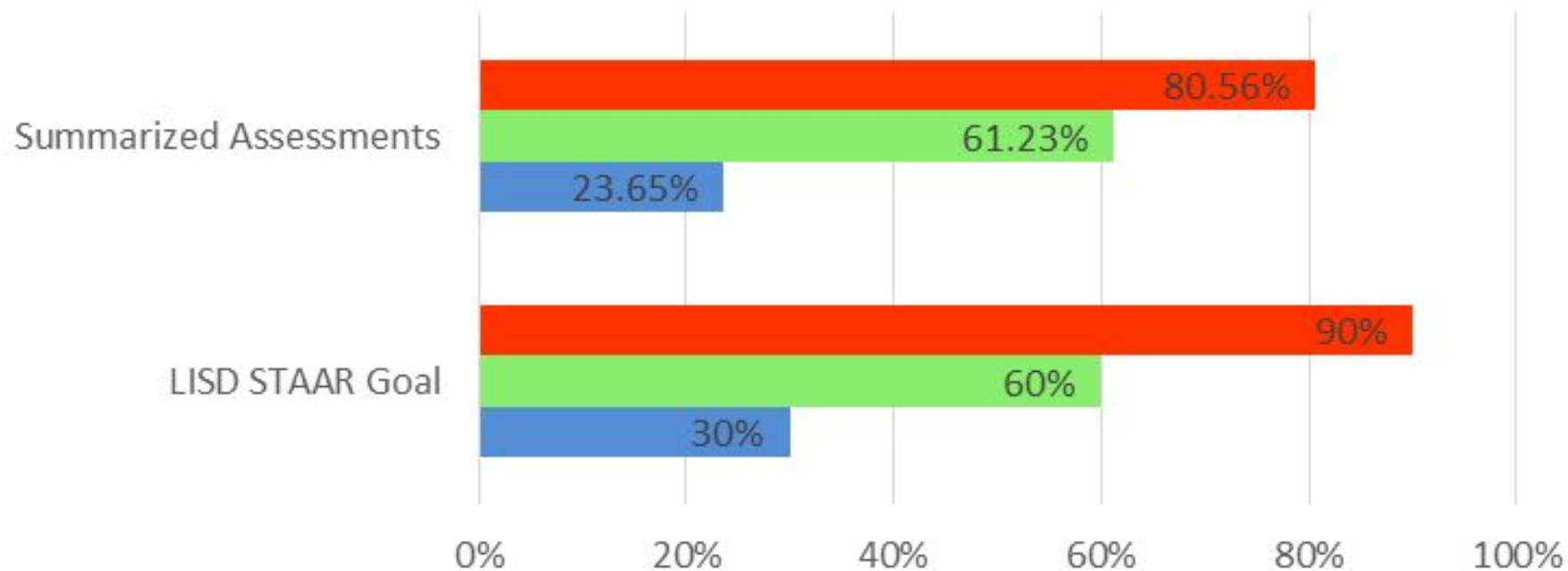
1st Math Common Assessments

Approaches Meets Masters



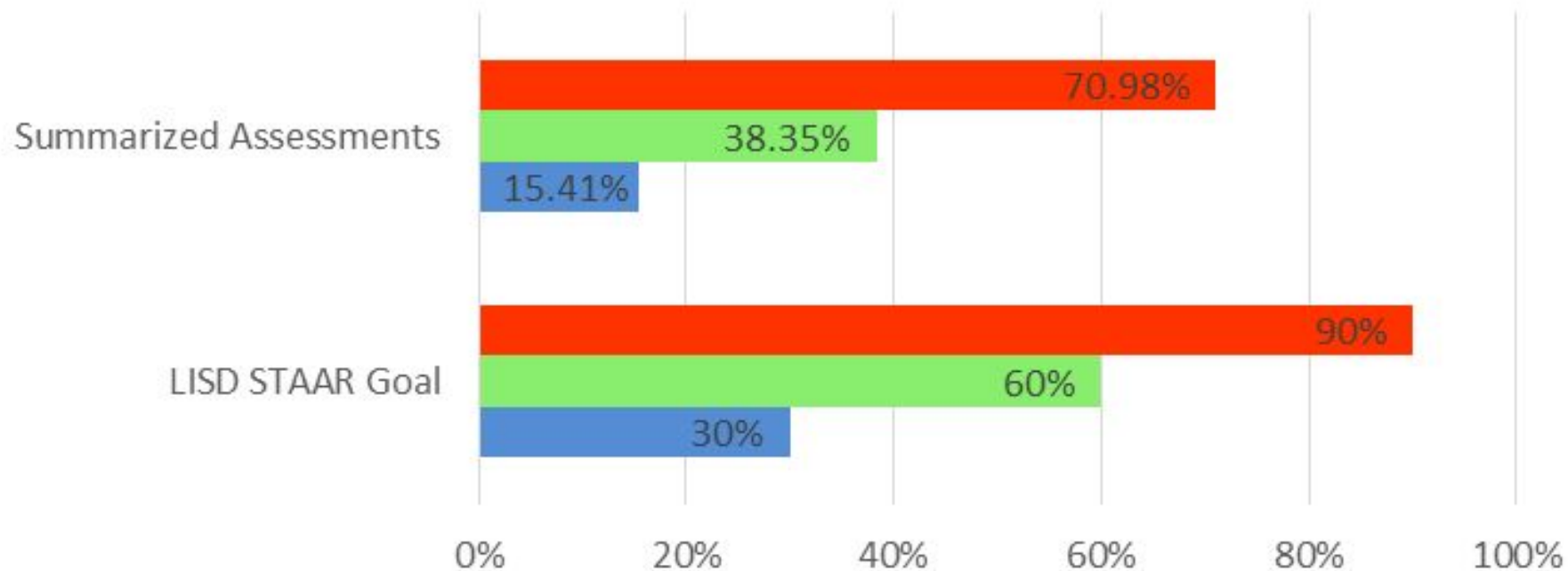
2nd Math Common Assessments

Approaches Meets Masters



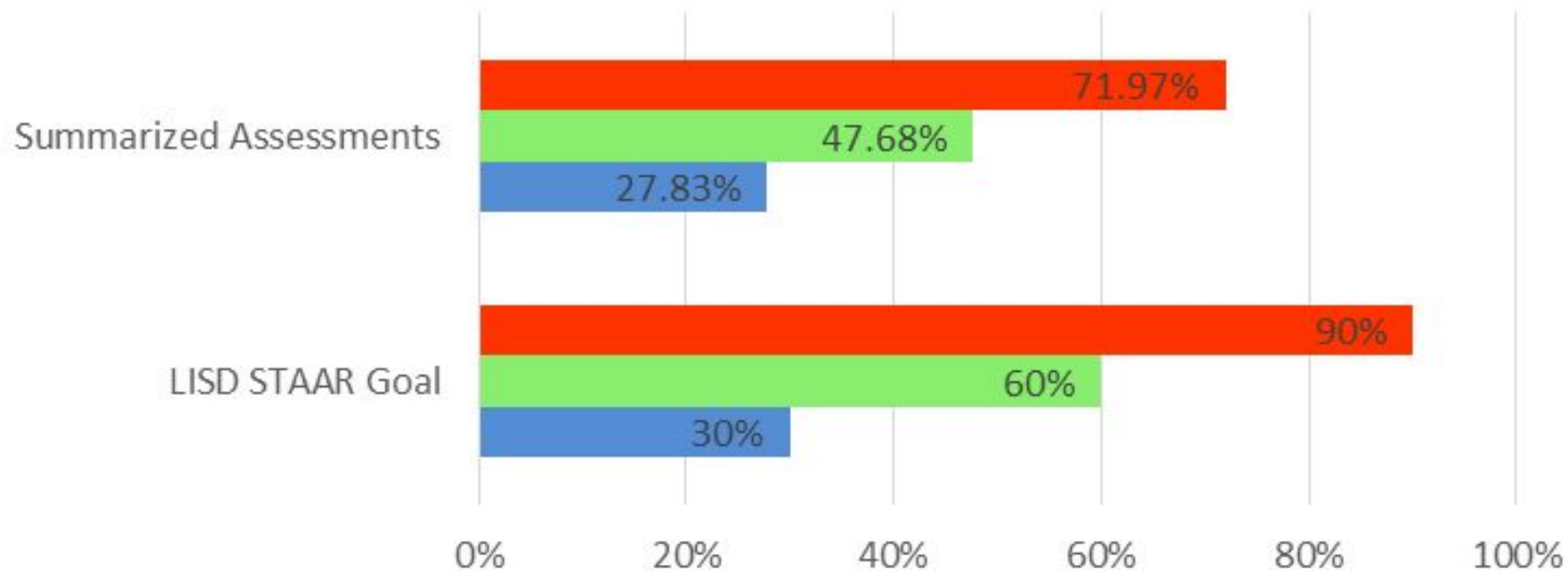
3rd Math Common Assessments

Approaches Meets Masters



4th Math Common Assessments

Approaches Meets Masters



5th Math Common Assessments

Approaches Meets Masters

Summarized Assessments

71.85%

44.73%

16.59%

LISD STAAR Goal

90%

60%

30%

0%

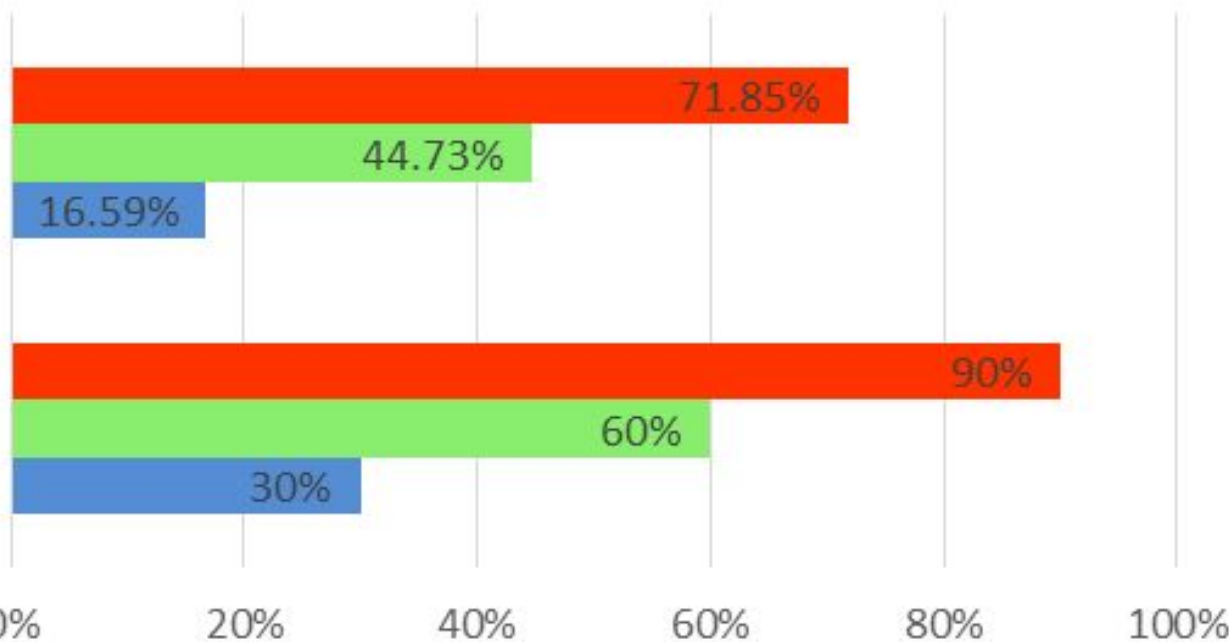
20%

40%

60%

80%

100%



6th Math Common Assessments

Approaches Meets Masters

Summarized Assessments

47.71%

13.58%

2.07%

LISD STAAR Goal

90%

60%

30%

0%

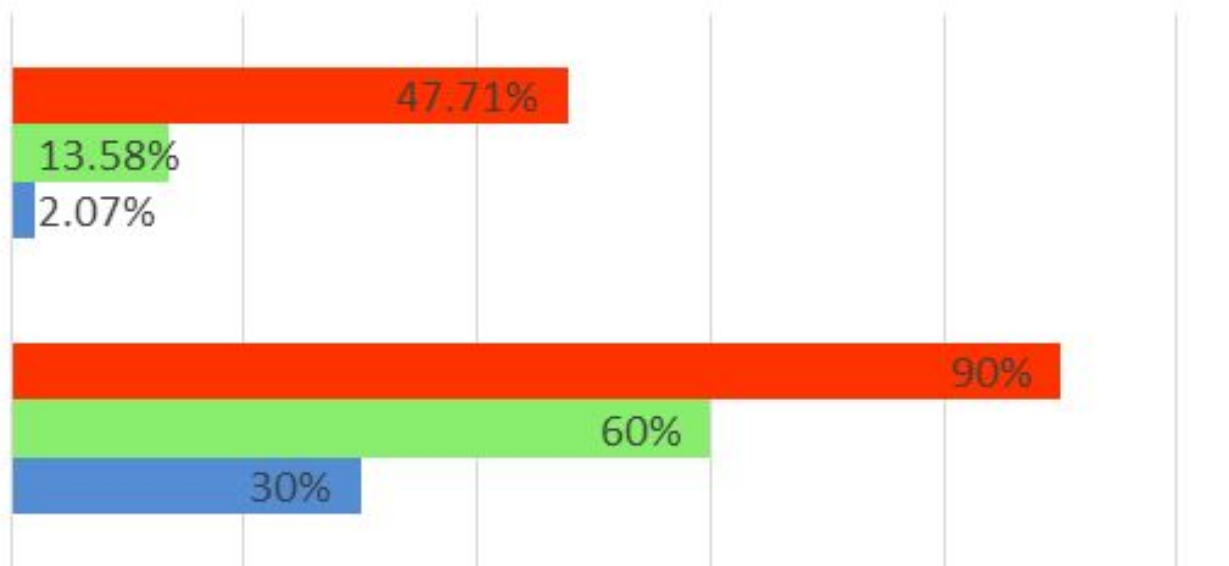
20%

40%

60%

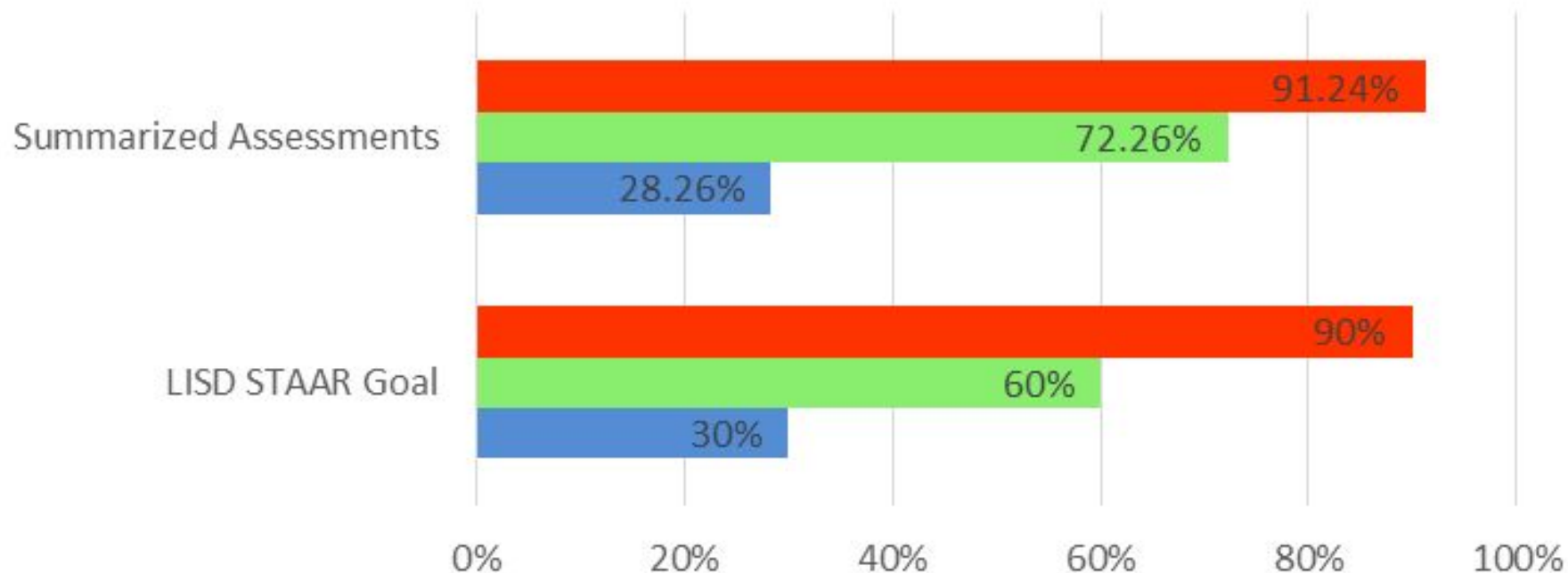
80%

100%



6th ACCEL. Math Common Assessments

Approaches Meets Masters



7th Math Common Assessments

Approaches Meets Masters

Summarized Assessments

31.60%

14.21%

1.81%

LISD STAAR Goal

90%

60%

30%

0%

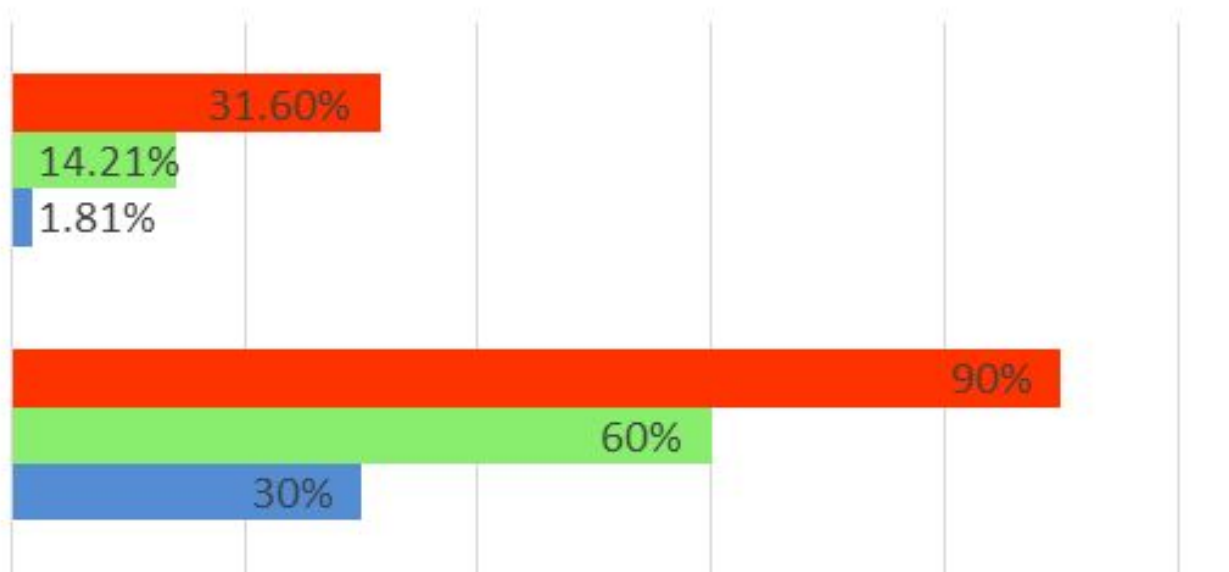
20%

40%

60%

80%

100%



7th ACCEL. Math Common Assessments

Approaches Meets Masters

Summarized Assessments

89.06%

66.32%

10.76%

LISD STAAR Goal

90%

60%

30%

0%

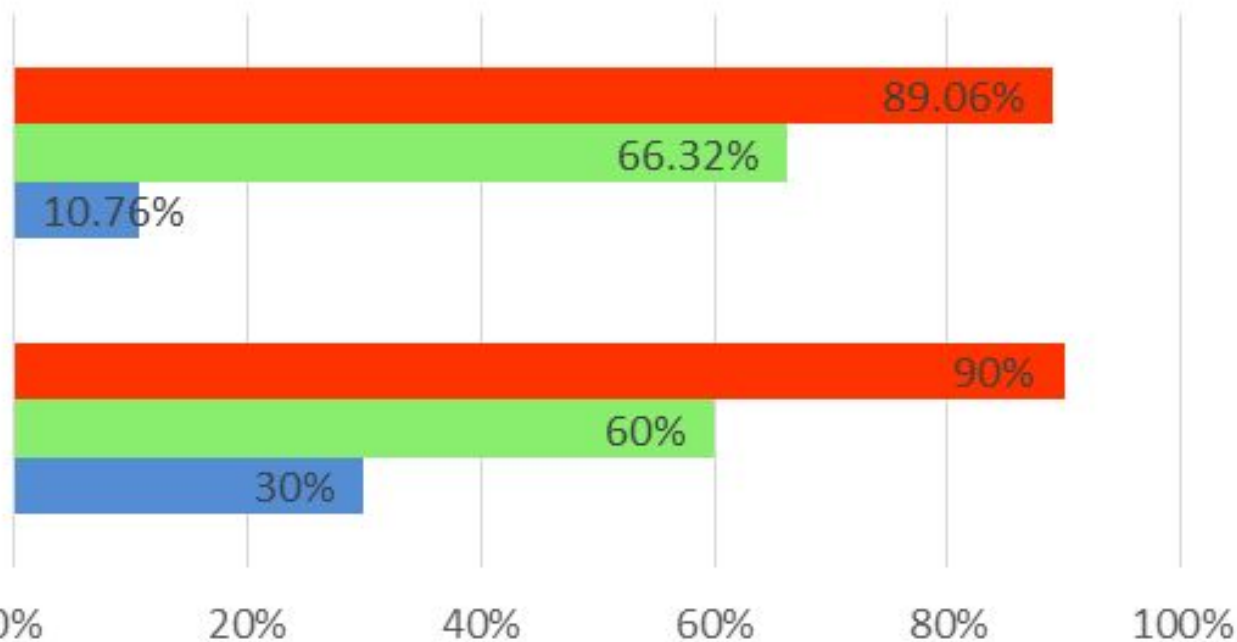
20%

40%

60%

80%

100%



8th Math Common Assessments

Approaches Meets Masters

Summarized Assessments

71.65%

47.08%

14.56%

LISD STAAR Goal

90%

60%

30%

0%

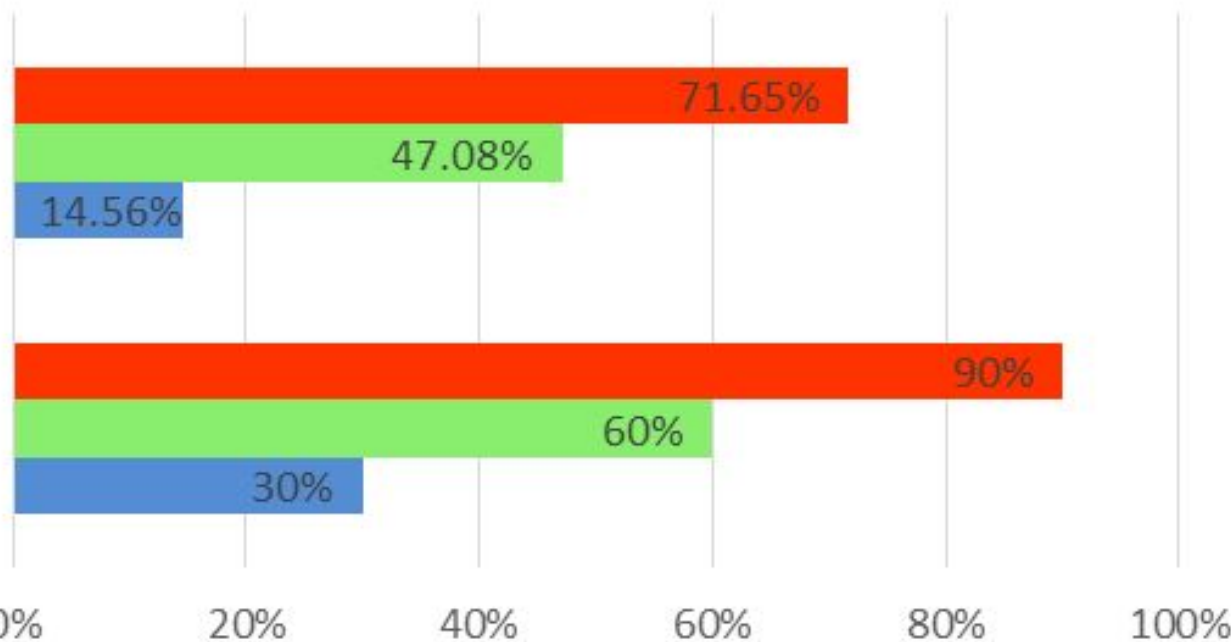
20%

40%

60%

80%

100%



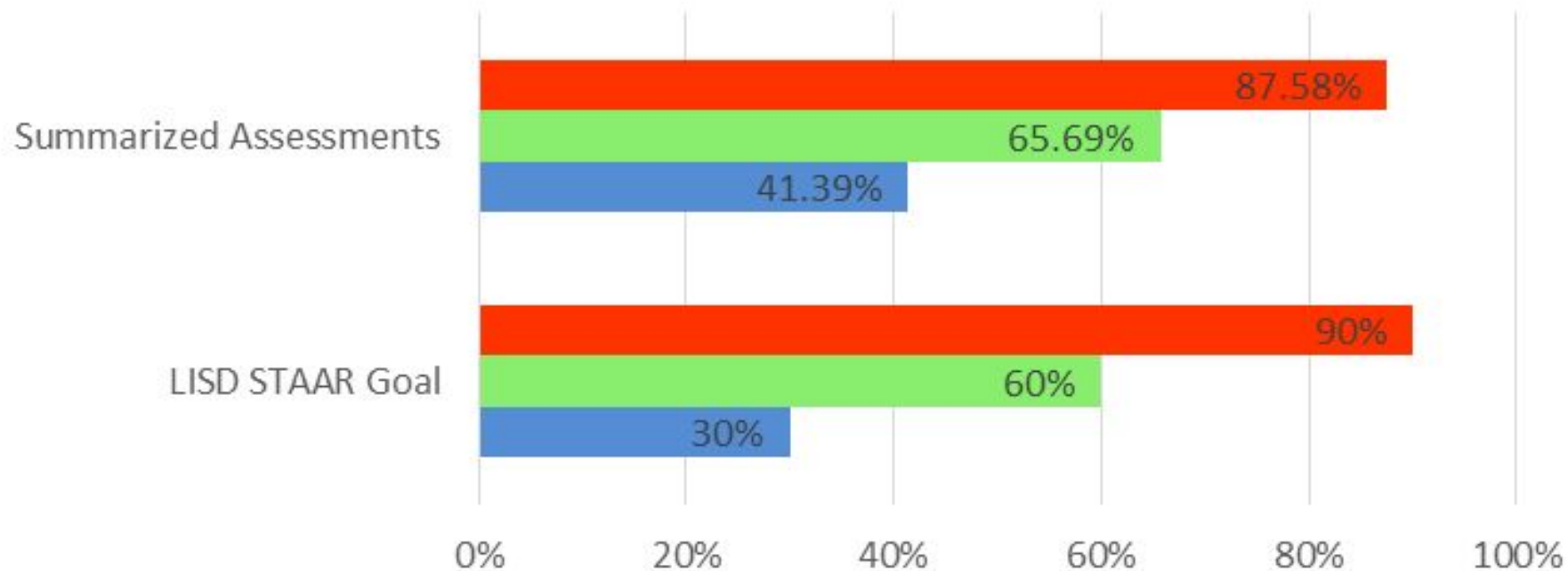
8th Algebra I Common Assessments

Approaches Meets Masters



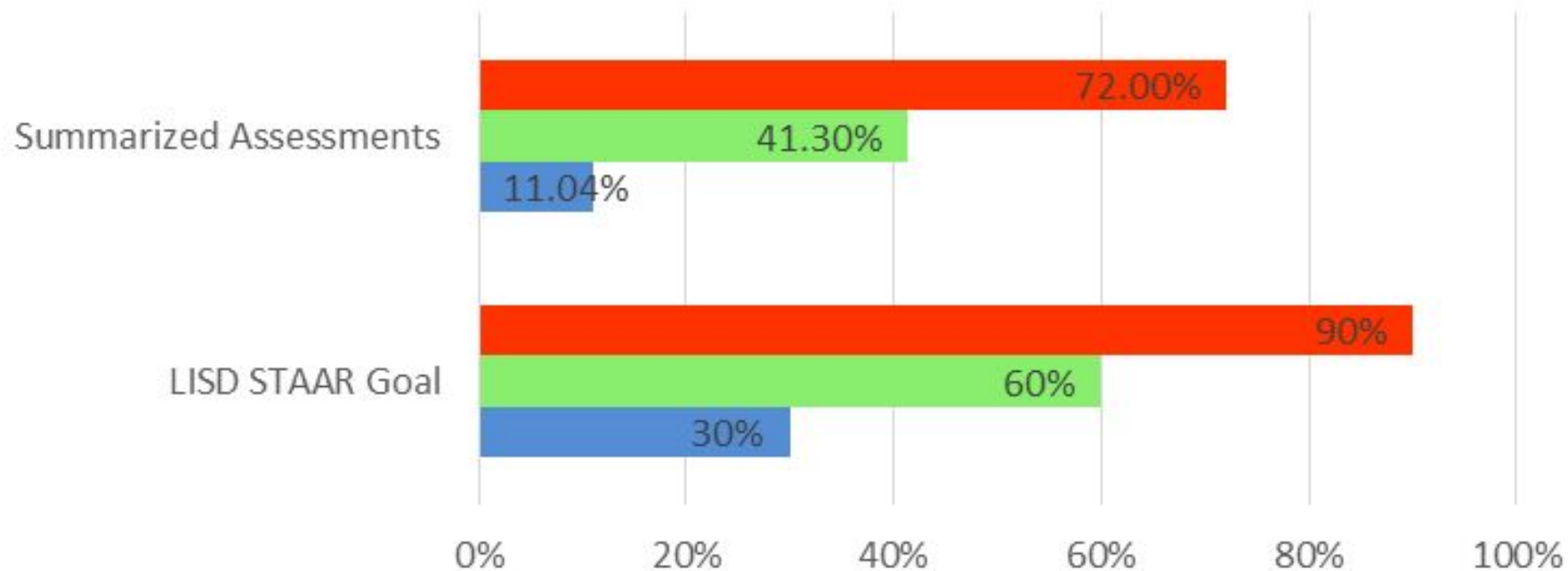
LHS Algebra I Common Assessments

Approaches Meets Masters



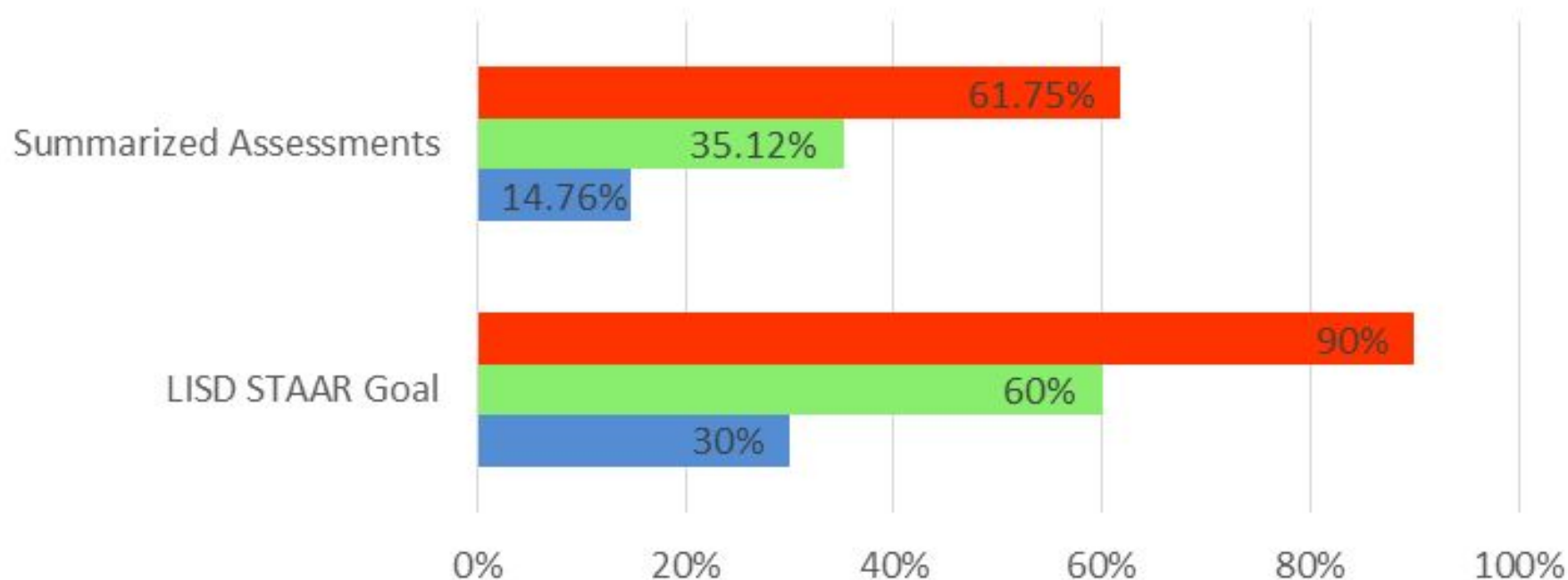
4th Science Common Assessments (Capitol)

Approaches Meets Masters



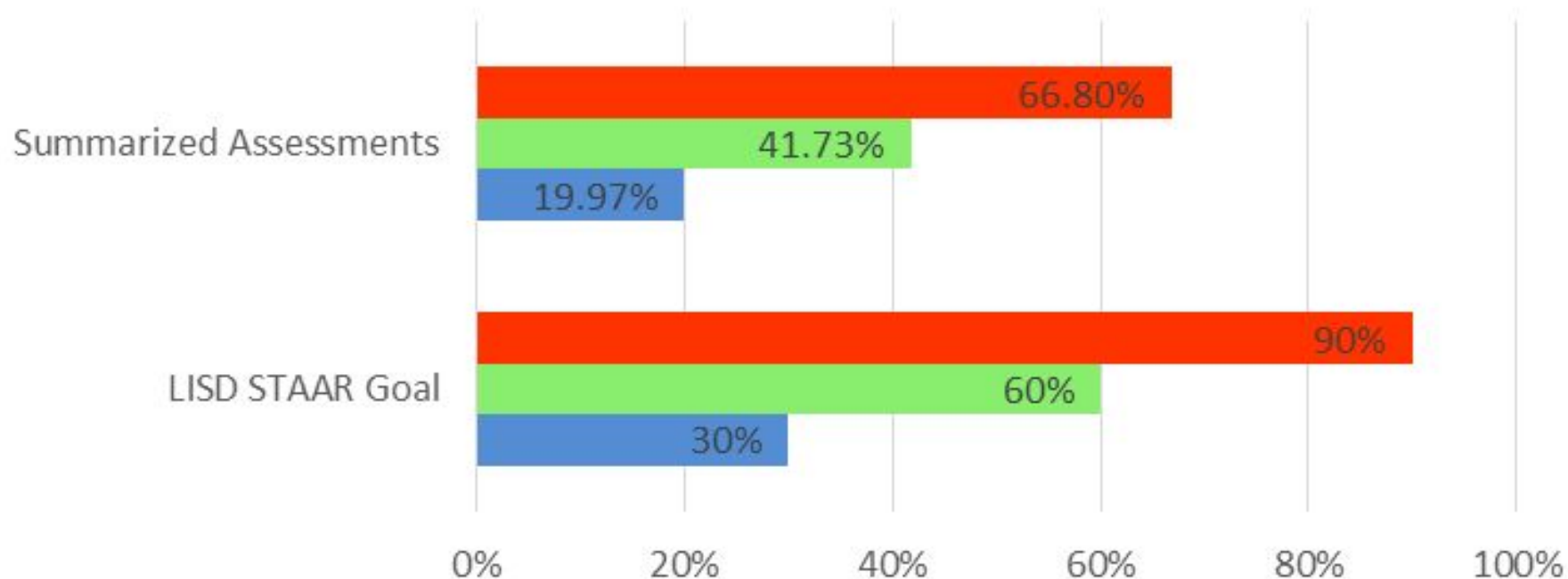
5th Science Common Assessments

Approaches Meets Masters



6th Science Common Assessments

Approaches Meets Masters



7th Science Common Assessments

Approaches Meets Masters

Summarized Assessments

62.54%

39.59%

18.93%

LISD STAAR Goal

90%

60%

30%

0%

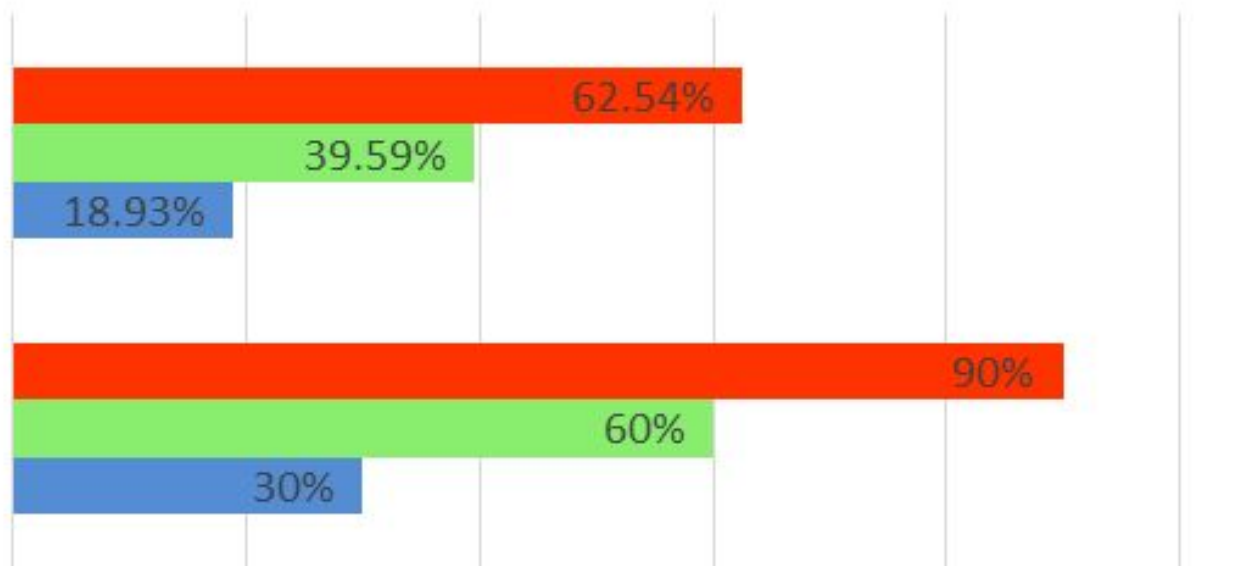
20%

40%

60%

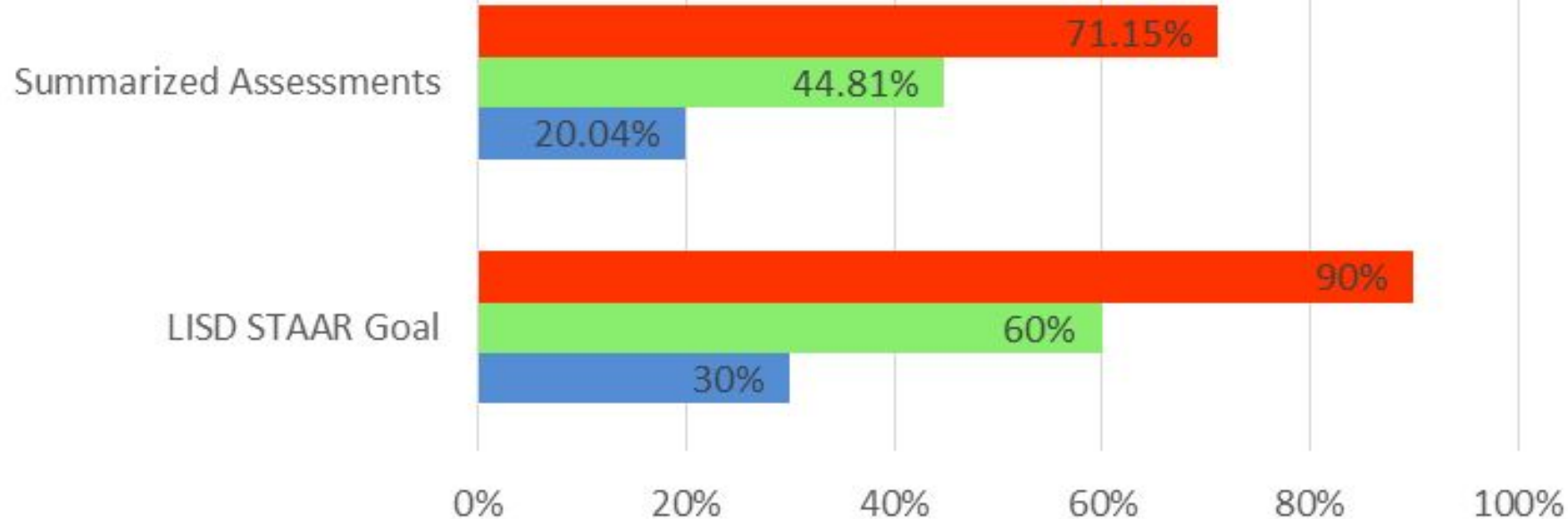
80%

100%



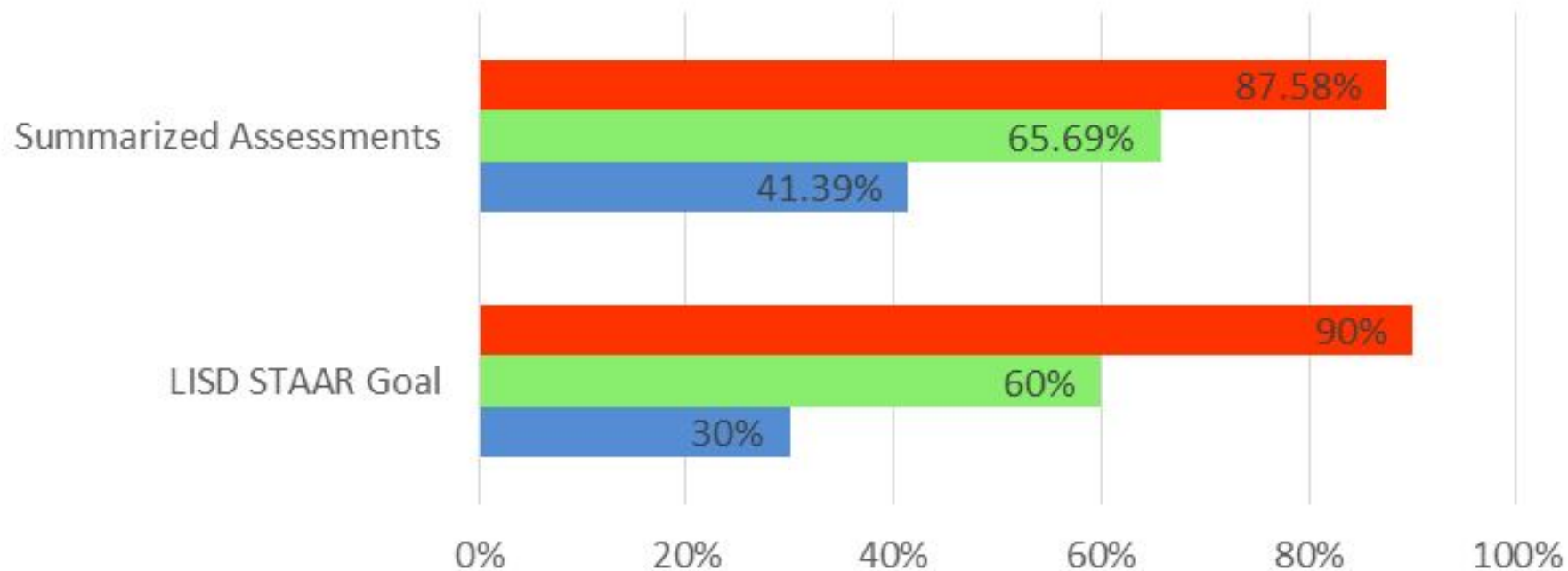
8th Science Common Assessments

Approaches Meets Masters



Biology Common Assessments

Approaches Meets Masters



Next Steps for the District

- Disaggregate the data to determine areas to improve.
- Compare to STAAR data when results are received to ensure alignment.
- Support staff with ongoing professional development.

Bluebonnet Learning - Math K-5 and K-8 (training with Great Minds)

- Math 6-8 (training with Great Minds)

- RLA (training with Region 17)

Texas Science - K-5 and 6-8 (training with McGraw Hill)

- Katie Pena supports RLA and Social Studies teachers during the summer and ongoing through the school year.
- Gracie Ruiz supports Math and Science teachers during the summer and ongoing through the school year.

EXPECTED DATES for STATE ASSESSMENT RESULTS

- STAAR (3-8) - May 30th
- STAAR EOC - May 23rd
- June EOC - July 21st
- STAAR ALT. 2 - June 9th
- TELPAS - May 21st
- TELPAS ALT. - April 8th

Note: Results will be available to parents on or around June 17th in the TEA parent portal.

NWEA testing window closed on Friday, May 9th. Data will be available for June.