



WASHINGTON COUNTY SAFE ROUTES TO SCHOOL SUPPORT

Washington County conducted a three-year planning effort for the unincorporated communities of Aloha and Reedville. Among the top issues identified by the community were safety and connectivity. Sidewalk infill was the issue most often referred to.

The project team began working with safety and transportation staffs at Hillsboro and Beaverton School Districts to better understand district-defined characteristics and build on existing information bases. An initial analysis looked at 1/4 mile radius around elementary schools and 1/2 mile radius around the middle and high schools. Analysis resulted in 9 miles of sidewalk gaps in the circles! The next step to reach an actionable recommendation used the school district's hazard maps, county housing inventory and sidewalk gaps, and evaluate the potential number of residences different project completions would benefit. Each of the 11 public schools in the study area were evaluated with the goal to identify at least one priority project for each school that would improve safe walking and biking access within defined walk distances. 99 projects emerged. Additional criteria were applied and the list was winnowed to 15 key projects. Each one will benefit the neighborhoods, the schools, and provide an active way to get to school.

The project will provide walking and biking access to Beaver Acres School within the 1/4 mile school walk shed to an additional 1,100 homes, eliminate the need for up to six bus trips a day (an environmental benefit), and provide additional access to the Tualatin Nature Park. This project is a pedestrian and bicycle bridge across Beaverton Creek completing Augusta Lane.

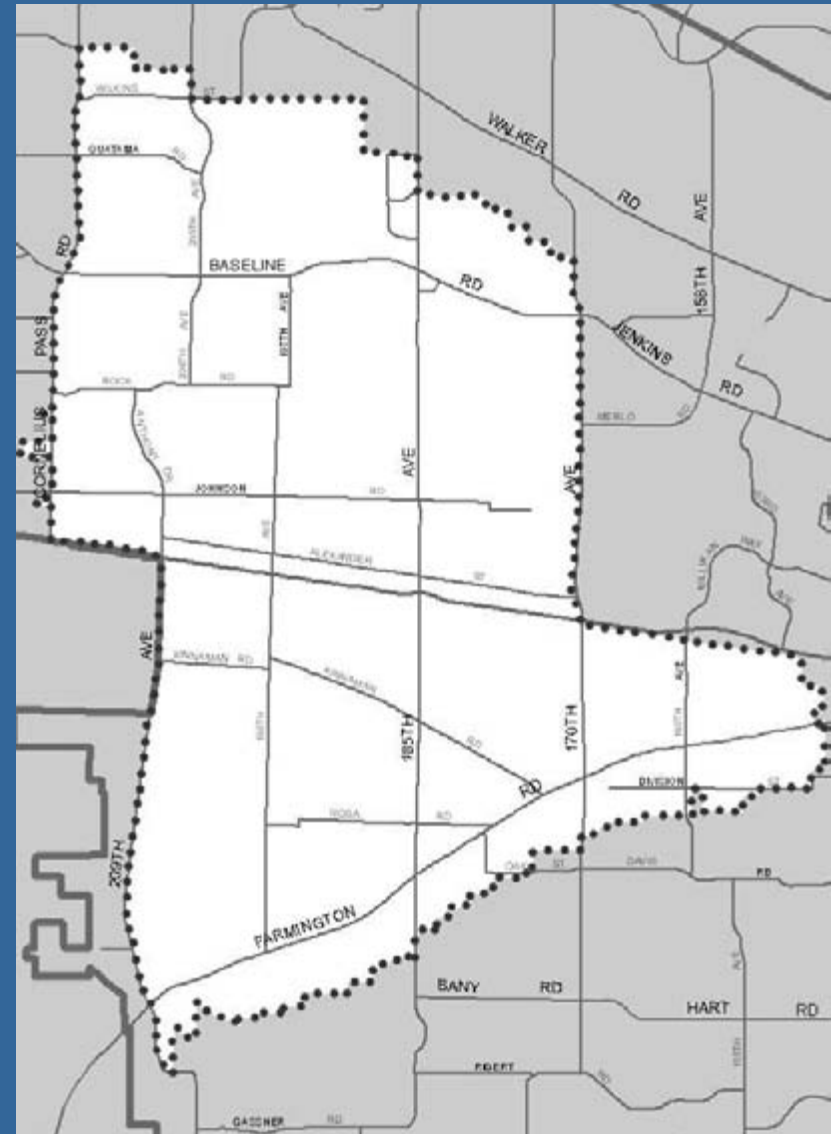
Washington County would like to request a letter of support from the School Board as part of a funding request package to be developed by the county.



Improving Walking Connections Near Schools

Aloha-Reedville Study and Livable Community Plan

- Sustainable Communities grant
- 3 years of outreach
- Themes:
 - Getting around safely
 - Major roads
 - Business and shopping
 - Neighborhood quality
 - Health & active living

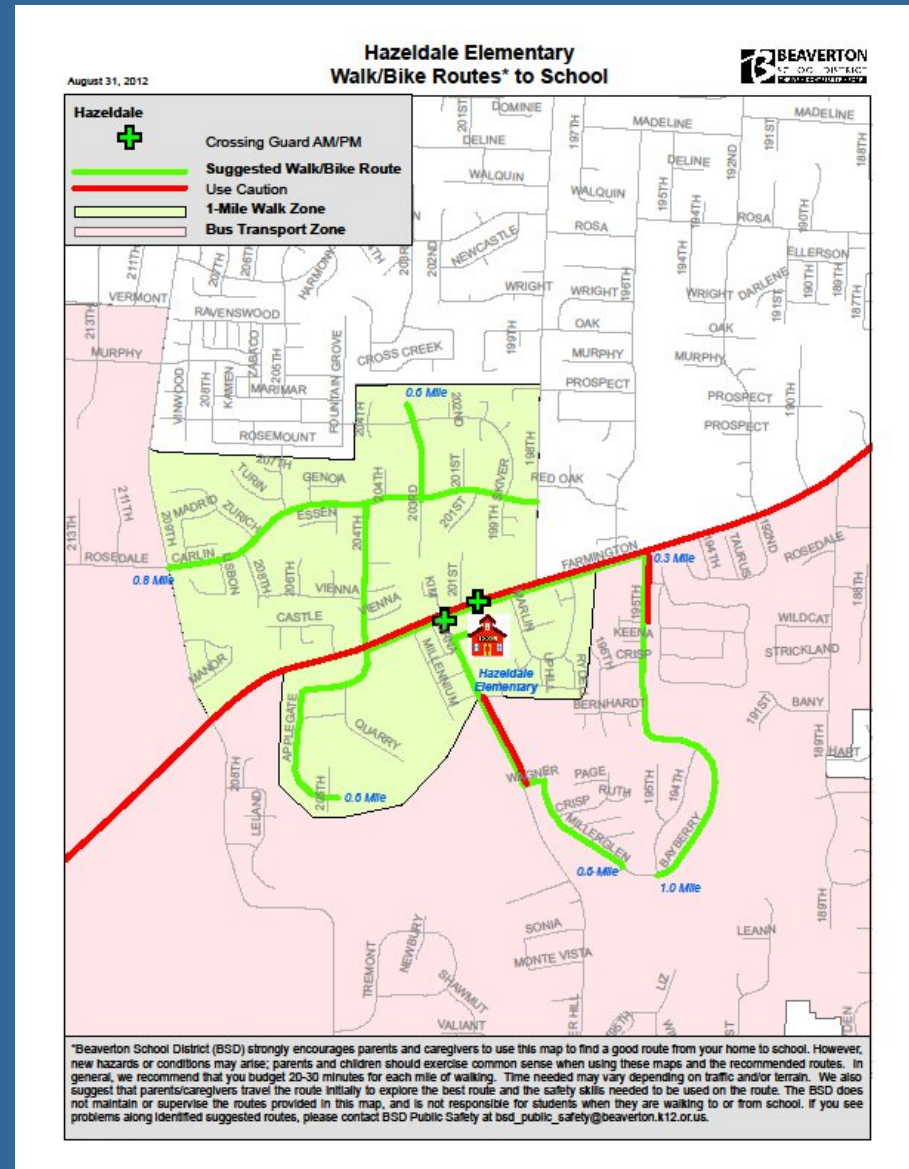


- Top requests:
 - Sidewalks
 - Street lighting
 - Pedestrian crossings
- Where to invest in sidewalks?
 - Near schools
 - Near transit
 - Near shopping
 - Near parks
- Concerns about existing/future traffic



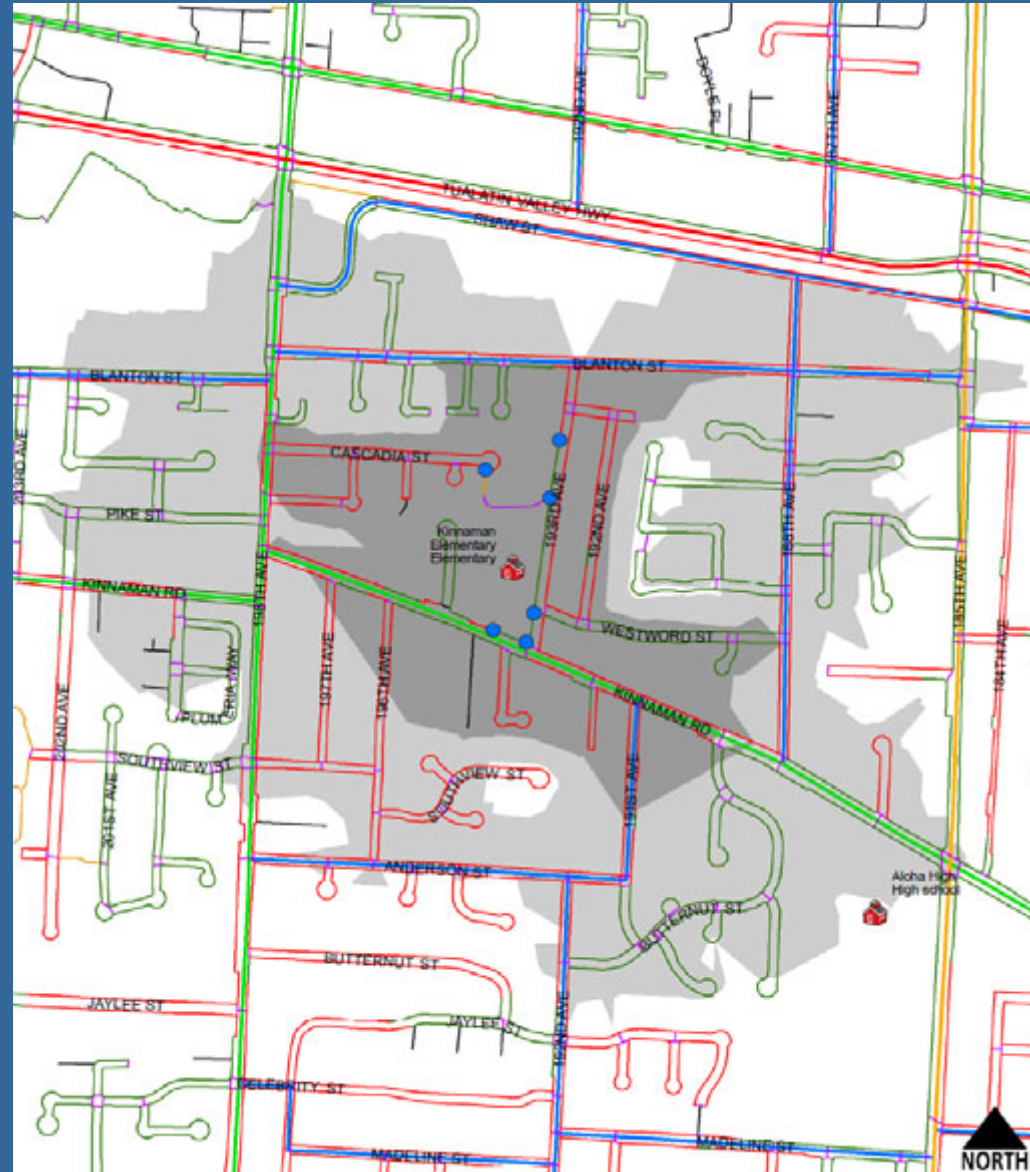
Sidewalk Project Development

- Iterative process with school district transportation staff, principals, consultants
- “Hazard maps”
- Recommended walking routes
- Parent surveys



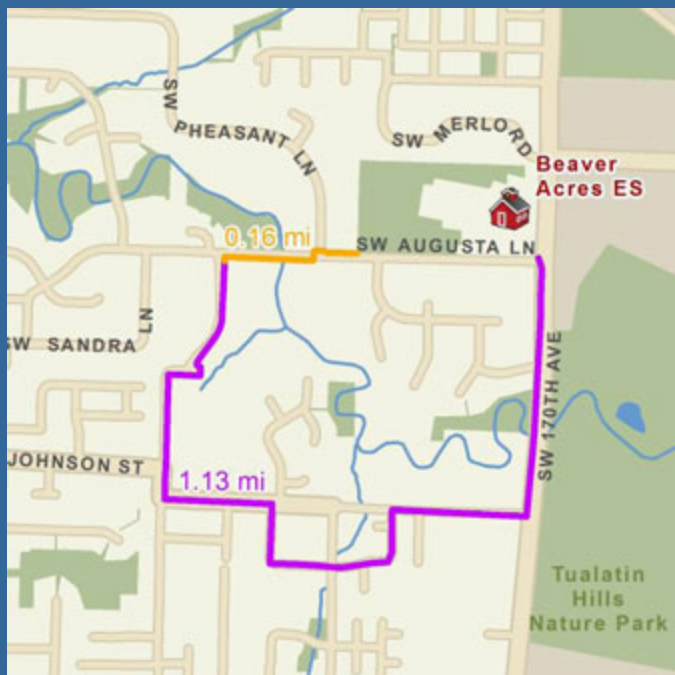
Sidewalk Project Development

- Sidewalk/walkway inventory
- “Walkshed” measured along the network
- Roadway functional classes:
 - Arterial
 - Collector
 - Neighborhood Route
 - Local Street

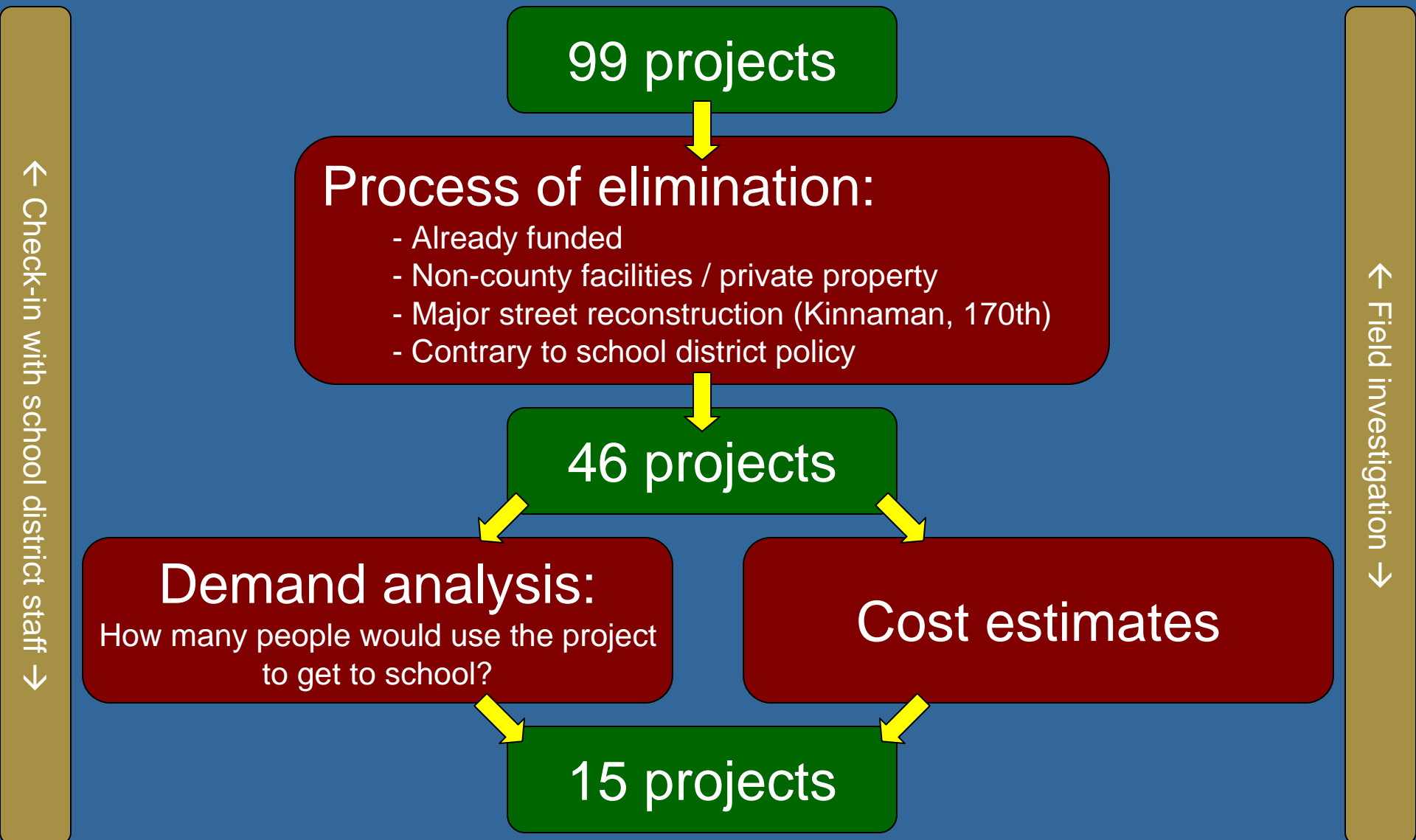


Other Pedestrian Needs

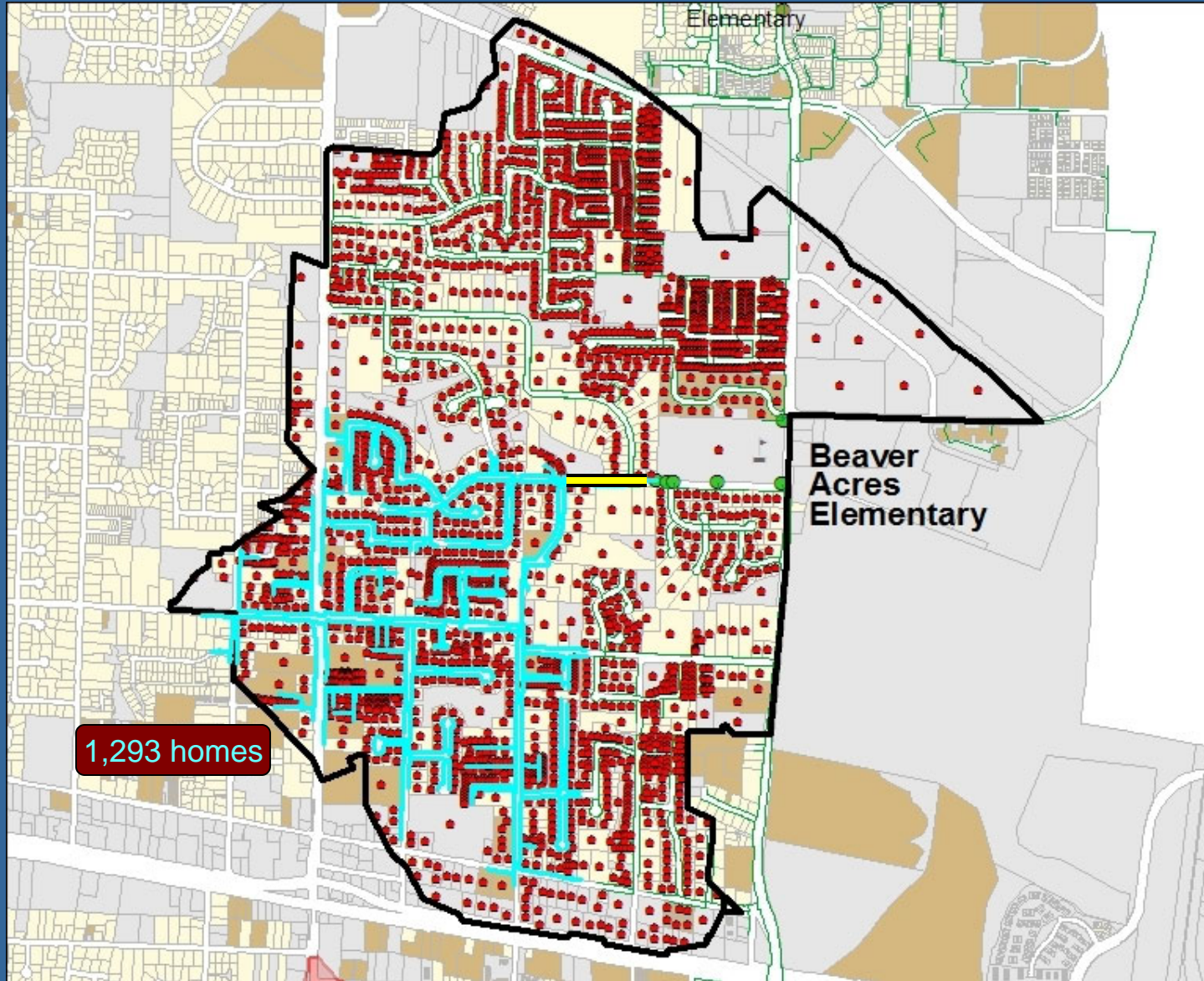
- Crosswalks
- Connectivity / Accessways



Prioritization



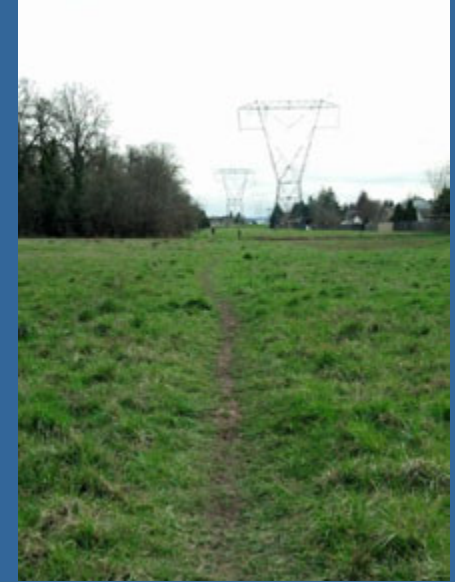
Demand Analysis



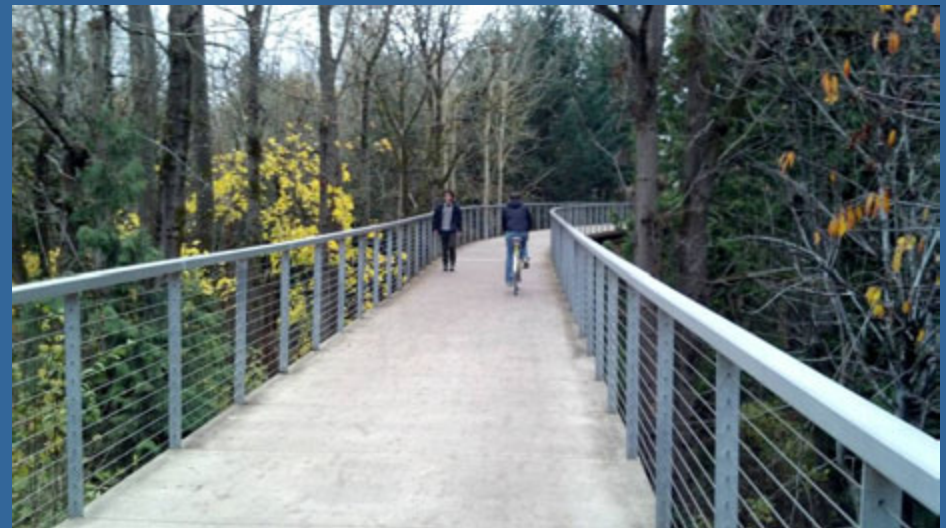
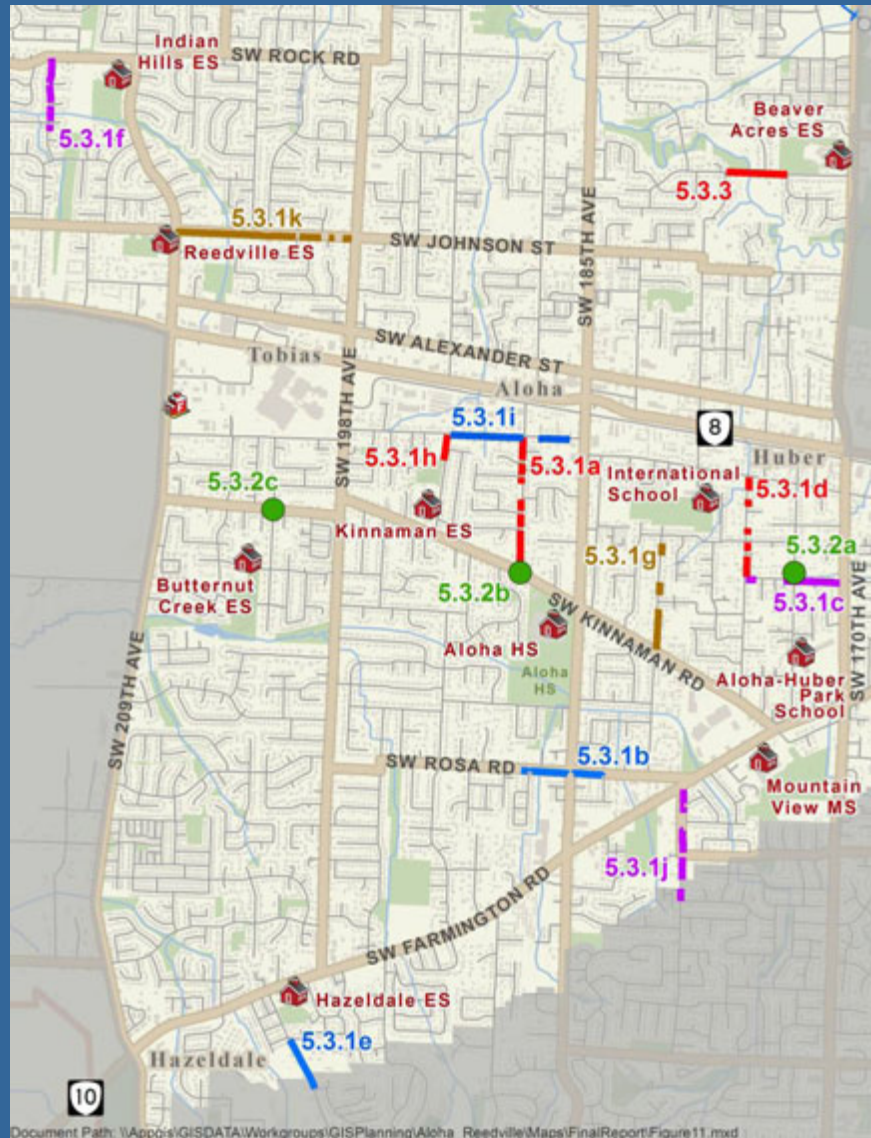
Demand/Cost Analysis

ID	School	District	Project	Length (ft)	Cost Estimate	Housing Units Served	Cost per HH	Notes
A-4	Aloha HS	Beaverton	Sidewalk on 188th Ave, Blanton – Kinnaman, side to be determined; marked crosswalk on Kinnaman Rd at 188th Ave	1,640	\$ 324,358	346	\$ 937.45	Two schools benefit. Serves 327 HHs for Aloha HS; 238 HHs for Kinnaman ES (areas overlap). Crosswalk does not add HHs. BSD priority.
A-5	Aloha HS	Beaverton	Sidewalk on north side of Madeline St, 192 nd Ave – Aloha HS frontage	885	\$ 173,416	692	\$ 250.60	Fewer HHs served if project A-8 is completed
A-6	Aloha HS	Beaverton	Sidewalk on north side of Madeline St, 180 th – 185 th	953	\$ 186,740	310	\$ 602.39	
A-7	Aloha HS	Beaverton	Sidewalk on south side of Rosa Rd 18811 – 183rd Ave	1,090	\$ 213,586	845	\$ 252.76	Two schools benefit. Serves 510 HHs for Aloha HS; 371 HHs for Mountain View MS (areas overlap).
A-8	Aloha HS	Beaverton	Sidewalk on east side of 185th Ave, Farmington Rd – Burnsridge Park – <i>portion near Farmington to be built by Walgreens</i>	276	\$ 54,082	280	\$ 193.15	
A-11	Aloha HS	Beaverton	Accessway from 189 th Ave cul-de-sac to Madeline St	156	\$ 59,015	30	\$ 1,967.16	
A-12	Aloha HS	Beaverton	Accessway from Jaylee St / 189 th Ave to Aloha HS through county and school property	430	\$ 275,028	195	\$ 1,410.40	Includes a segment on school property. Tested to determine benefit.
A-13	Aloha HS	Beaverton	Accessway from 188 th Pl to Jaylee St / 189 th Ave	201	\$ 76,038	68	\$ 1,118.21	
A-14	Aloha HS	Beaverton	Accessway from Butternut St to Kinnaman Rd by Housing Authority properties	215	\$ 81,335	60	\$ 1,355.58	On HOA property. Tested to determine benefit.
AH-1	Aloha-Huber K-8	Beaverton	Sidewalk on south side of Florence St, 175 th – 170th; marked crosswalks at 173rd & Florence	1,004	\$ 202,734	54	\$ 3,754.33	Couple with AH-4 to provide seamless sidewalk route to school.
AH-2	Aloha-Huber K-8	Beaverton	Sidewalk on south side of Florence St, 170 th – 165 th	1,170	\$ 229,262	13	\$ 17,635.50	
AH-3	Aloha-Huber K-8	Beaverton	Sidewalk on north side of Farmington Rd, 173 rd – 170 th	597	\$ 116,982	6	\$ 19,497.03	
AH-4	Aloha-Huber K-8	Beaverton	Sidewalk on east side of 175th Ave, Blanton – Florence	840	\$ 164,598	356	\$ 462.35	Need to couple with AH-1 in order to provide a seamless sidewalk route to school. BSD priority.
AH-5	Aloha-Huber K-8	Beaverton	Sidewalk on west side of 175th Ave, Florence – Chris	541	\$ 106,009	130	\$ 815.45	
AH-7	Aloha-Huber K-8	Beaverton	Marked crosswalk at 173 rd & Chris (north side of intersection)	60	\$ 3,000	534	\$ 5.62	
AH-8	Aloha-Huber K-8	Beaverton	Marked crosswalk at Blanton & 173 rd (west side of intersection)	50	\$ 3,000	341	\$ 8.80	
AH-9	Aloha-Huber K-8	Beaverton	Enhanced crossing of 170 th at Pauline La (RRFB or full signal)	90	\$ 342,300	1140	\$ 300.26	Crossing of 5-lane roads not endorsed by school district. Tested to determine benefit.
AH-10	Aloha-Huber K-8	Beaverton	Enhanced crossing of 170 th at Florence St (RRFB or full signal)	90	\$ 342,300	534	\$ 641.01	Crossing of 5-lane roads not endorsed by school district. Tested to determine benefit.
BA-2	Beaver Acres ES	Beaverton	Ped/bike bridge and accessway over Beaverton Creek at Augusta La, plus sidewalk infill on Augusta La	523	\$ 1,497,000	1293	\$ 1,157.77	BSD #1 priority. HIA funded.
BA-5	Beaver Acres ES	Beaverton	Shoulder and line-of-sight improvements on Pheasant La, 185th Ave – Augusta La	3,386	\$ 598,205	159	\$ 3,762.29	

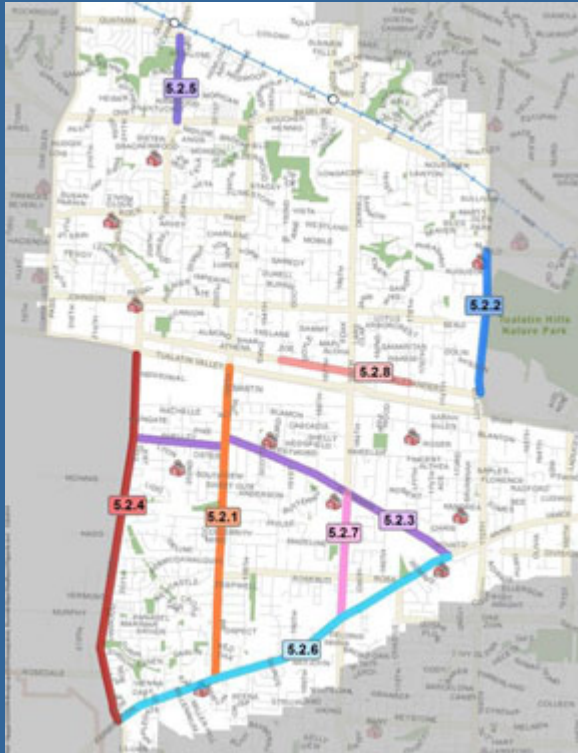
Field Investigation



Recommended Projects



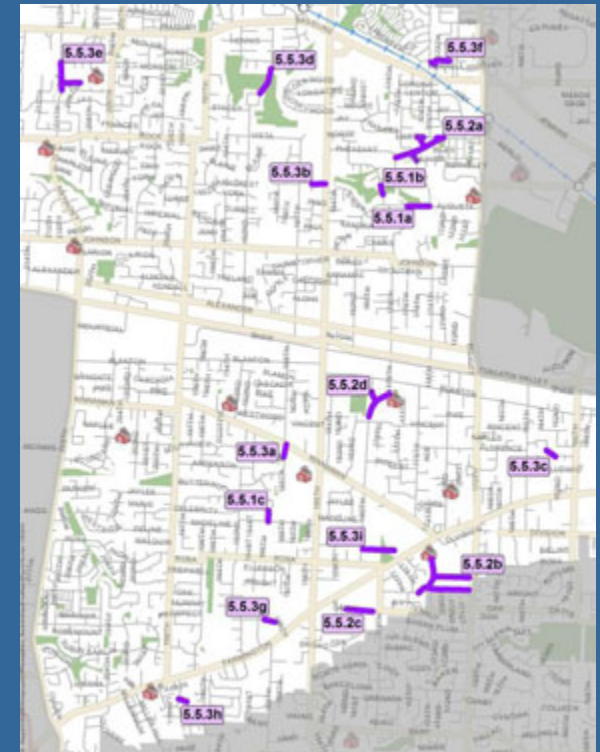
Supporting Projects



Major Street Improvements



Regional Trails



Accessways

- Augusta Lane Bridge
 - Health Impact Assessment
 - Letters of support
 - Nature in Neighborhoods
- Sidewalks
 - Sustainable Communities
 - CDBG
 - Minor Betterments / URMD
 - MSTIP
- Safe Routes to School program

Questions/Discussion

