



# Collin College

2017 Capital Improvement Program  
Monthly Report  
July 2019

Collin County Community College District

Project Reference: 60541060  
Project Number: 60541060

August 07, 2019

## Quality information

Prepared by

Nuria Cortes  
Program Documents Manager

Checked by

Nick Fiehler  
Program Controls Manager

Approved By

Adrian Grimes  
Program Director

## Revision History

Revision	Revision date	Details	Authorized	Name	Position
First Publication	August 07, 2019	July '19 Report	Yes	Adrian Grimes	Program Director

## Distribution List

# Hard Copies	PDF Required	Association / Company Name
	1	Dr. Neil Matkin / Collin College
	1	Jason Parry/ Collin College

**Prepared for:**

Collin County Community College District  
3452 Spur 399  
Suite 327  
McKinney, TX 75069

**Prepared by:**

Nuria Cortes  
Program Documents Manager  
E: [ncortes.aecom@collin.edu](mailto:ncortes.aecom@collin.edu)

AECOM  
13355 Noel Road  
4<sup>th</sup> Floor  
Dallas TX, 75240  
[aecom.com](http://aecom.com)

Copyright © 2019 by AECOM

All rights reserved. No part of this copyrighted work may be reproduced, distributed, or transmitted in any form or by any means without the prior written permission of AECOM.

## Table of Contents

1.	Introduction.....	5
2.	Executive Summary .....	5
3.	Scope.....	6
3.1	Phase 1 .....	6
3.2	Phase 2 .....	6
3.3	Phase 3 .....	6
3.4	Phase 4 .....	7
4.	Community .....	7
4.1	Project Teams .....	7
4.1.1	Phase 1 .....	7
4.1.2	Phase 2 .....	8
4.1.3	Phase 3 .....	8
4.1.4	Phase 4 .....	8
4.2	Current Personnel Estimate.....	9
4.3	Community Outreach.....	10
5.	Schedule .....	10
5.1	Program.....	10
5.2	Phase 1 .....	11
5.3	Phase 2 .....	12
5.4	Phase 3 .....	13
5.5	Phase 4 .....	13
6.	Budget.....	14
6.1	Program Summary .....	14
6.2	Phase 1 .....	15
6.3	Phase 2 .....	16
6.4	Phase 3 .....	17
6.5	Phase 4 .....	17
6.6	Phase A .....	18
6.7	Building Fund Reimbursement.....	19
7.	Completed Items.....	19
7.1	General Program.....	19
7.2	Procurement .....	19
7.3	Design .....	19
7.4	Pre-Construction .....	19
7.5	Construction.....	20
7.6	Acceptance and Close-Out.....	20
8.	Pending Items.....	20
8.1	General Program.....	20
8.2	Procurement .....	20
8.3	Design .....	20
8.4	Pre-Construction .....	20
8.5	Construction.....	20
8.6	Acceptance and Close-Out.....	21
	Appendix A – Construction Progress Photos .....	22

## 1. Introduction

On May 6, 2017, voters approved Collin College's \$600 million bond proposal to facilitate a long-range plan to accommodate the projected population growth in Collin County over the next two decades. The program consists of 4 new campuses, 3 new facilities, 2 repurposed existing spaces, and 3 wayfinding projects (on existing sites). The program is scheduled to be completed in 4 phases over 7 years with projects opening in 2020.

On May 16, 2017, in a special session, the Board of Trustees granted the District President authority to enter and negotiate into contract with AECOM Technical Services, Inc. (AECOM) to provide Program Management Services to the Collin College 2017 Capital Improvement Program. On May 25, 2017, Collin College issued a Notice to Proceed to AECOM. As part of these services, AECOM will deliver a monthly report to provide status and progress of key aspects of the Program.

## 2. Executive Summary

The Program is progressing as planned with no major issues to report at this time.

### Completed and Pending Items

- Structural slab and joists for the Garage is complete. Academic steel truss erection is complete and MEP rough-in is on-going. Erection of tilt wall panels and erection of steel is on-going at the Trade Bars
- Structural steel erection at all 3 buildings has been completed at the Wylie Campus. Undergrounding of existing utilities, exterior building sheathing, interior stud wall installation and MEP rough-in are on-going
- Design Development of the IT Center is on-going
- Construction Document design phase for the Farmersville Campus and Celina Campus is on-going

### Items of close attention

- Construction schedules are being closely monitored to ensure completion of the Phase 1 projects by Fall 2020

### Budget Summary

- \$354,255,164 of the \$600,000,000 has been committed to-date in the form of contracts with various vendors. This represents 59.04% of the overall program budget committed.
- \$194,468,320 of the \$354,255,164 committed amount has been expended to-date. This represents 54.89% of the commitments to date and 32.41% of the program budget.

### 3. Scope

#### 3.1 Phase 1

- Wylie Campus
  - Construction of a campus on a new approximately 97-acre site
  - The campus is planned to include:
    - Campus Commons
    - Learning Resource Center / Library
    - Student Center
    - Central Utility Plant
- Technical Campus
  - Construction of a Technical Campus on a new 32-acre site in Allen, Texas
  - The campus is planned to include:
    - 500 car underground parking garage
    - Academic Building (includes space for dual credit students)
    - 3 Trade Bar Building to support CTE programs
  - Programs planned for inclusion include:
    - Advanced Manufacturing, Automotive, Construction, and Health Science

#### 3.2 Phase 2

- Celina Campus
  - Construction of a campus on a new approximately 75-acre site
  - The campus is planned to include:
    - Student Union / Workforce / Instructional Building
- Farmersville Campus
  - Construction of a campus on a new approximately 76-acre site
  - The campus is planned to include:
    - Student Union / Workforce / Instructional Building
- Frisco Campus
  - Construction of a new facility on an existing campus
  - The campus is planned to include:
    - IT Center

#### 3.3 Phase 3

- Frisco Campus
  - Construction of a new facility on an existing campus
  - The campus is planned to include:

- Welcome Center
- McKinney Campus
  - Construction of a new facility on an existing campus
  - The campus is planned to include:
    - Welcome Center

### 3.4 Phase 4

- Frisco Campus
  - Renovations / Repurposing of Existing Buildings
  - Traffic Infrastructure & Wayfinding
- McKinney Campus
  - Renovations / Repurposing of Existing Buildings
  - Wayfinding
- Plano Campus
  - Wayfinding

## 4. Community

### 4.1 Project Teams

#### 4.1.1 Phase 1

- Wylie Campus
  - Program Manager: AECOM Technical Services, Inc. (under contract)
  - A/E: Page Southerland Page, Inc. (under contract)
    - MEP: Reed, Wells, Benson & Co.
    - Civil Engineer: Pacheco Koch Consulting Engineers, Inc.
    - Cost Consulting: Vermeulens
  - Construction Manager-at-Risk: Skanska USA Building, Inc. (under contract)
  - Commissioning Agent: Bath Group, Inc. (under contract)
- Technical Campus
  - Program Manager: AECOM Technical Services, Inc. (under contract)
  - A/E: Perkins+Will, Inc. (under contract)
    - Associate Architect: Hoefer Wysocki Architecture
    - MEP: Purdy McGuire
    - Civil Engineer: Pacheco Koch Consulting Engineers, Inc.
    - Structural Engineer: L.A. Fuess Partners, Inc.
    - Cost Consulting: Vermeulens
  - Construction Manager-at-Risk: McCarthy Building Companies, Inc. (under contract)

- Commissioning Agent: Farnsworth (under contract)

#### 4.1.2 Phase 2

- Celina Campus
  - Program Manager: AECOM (under contract)
  - A/E: Beck Architecture, LLC (under contract)
    - Structural Engineer: L.A. Fuess Partners, Inc.
    - MEP: Reed, Wells, Benson & Co.
    - Civil Engineer: RLK Engineering
  - Construction Manager-at-Risk: JT Vaughn Construction (under contract)
- Farmersville Campus
  - Program Manager: AECOM (under contract)
  - A/E: Beck Architecture, LLC (under contract)
    - Structural Engineer: L.A. Fuess Partners, Inc.
    - MEP: Reed, Wells, Benson & Co.
    - Civil Engineer: RLK Engineering
  - Construction Manager-at-Risk: JT Vaughn Construction (under contract)
- IT Center
  - Program Manager: AECOM (under contract)
  - A/E: Beck Architecture, LLC (under contract)
    - MEP: ME Engineers
    - Civil Engineer: RLK Engineering
  - Construction Manager-at-Risk: JE Dunn Construction (under contract)

#### 4.1.3 Phase 3

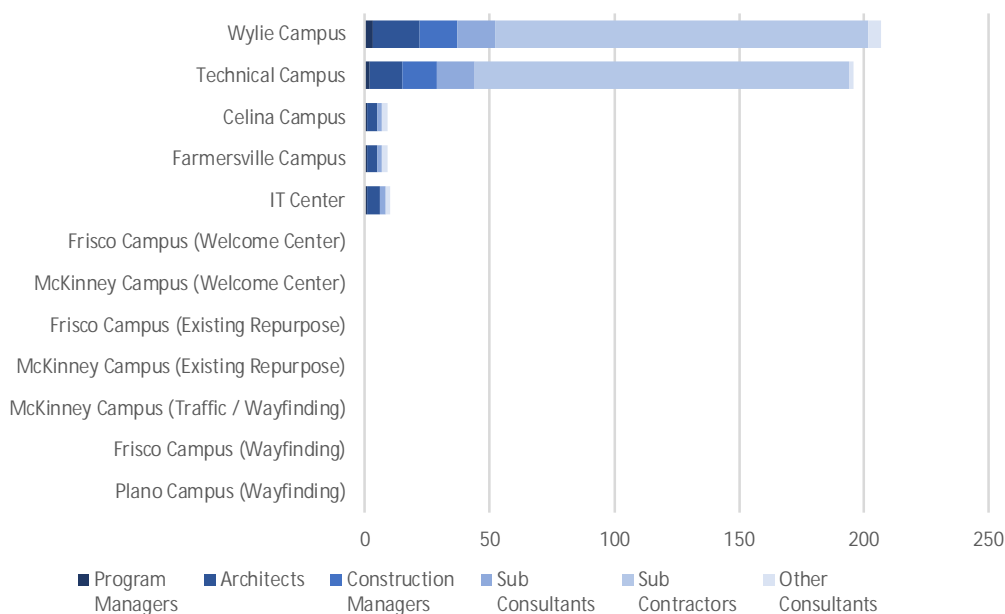
- Frisco Campus (Welcome Center)
  - Program Manager: (AECOM option expiration date: August 2019)
  - A/E: TBD
  - Construction Manager-at-Risk: TBD
- McKinney Campus (Welcome Center)
  - Program Manager: (AECOM option expiration date: August 2019)
  - A/E: TBD
  - Construction Manager-at-Risk: TBD

#### 4.1.4 Phase 4

- Frisco Campus (Existing Repurpose)
  - Program Manager: (AECOM option expiration date: May 2021)

- A/E: TBD
- Construction Manager-at-Risk: TBD
- McKinney Campus (Existing Repurpose)
  - Program Manager: (AECOM option expiration date: May 2021)
  - A/E: TBD
  - Construction Manager-at-Risk: TBD
- McKinney Campus (Traffic / Wayfinding)
  - Program Manager: (AECOM option expiration date: May 2021)
  - A/E: TBD
  - Construction Manager-at-Risk: TBD
- Frisco Campus (Wayfinding)
  - Program Manager: (AECOM option expiration date: May 2021)
  - A/E: TBD
  - Construction Manager-at-Risk: TBD
- Plano Campus (Wayfinding)
  - Program Manager: (AECOM option expiration date: May 2021)
  - A/E: TBD
  - Construction Manager-at-Risk: TBD

## 4.2 Current Personnel Estimate



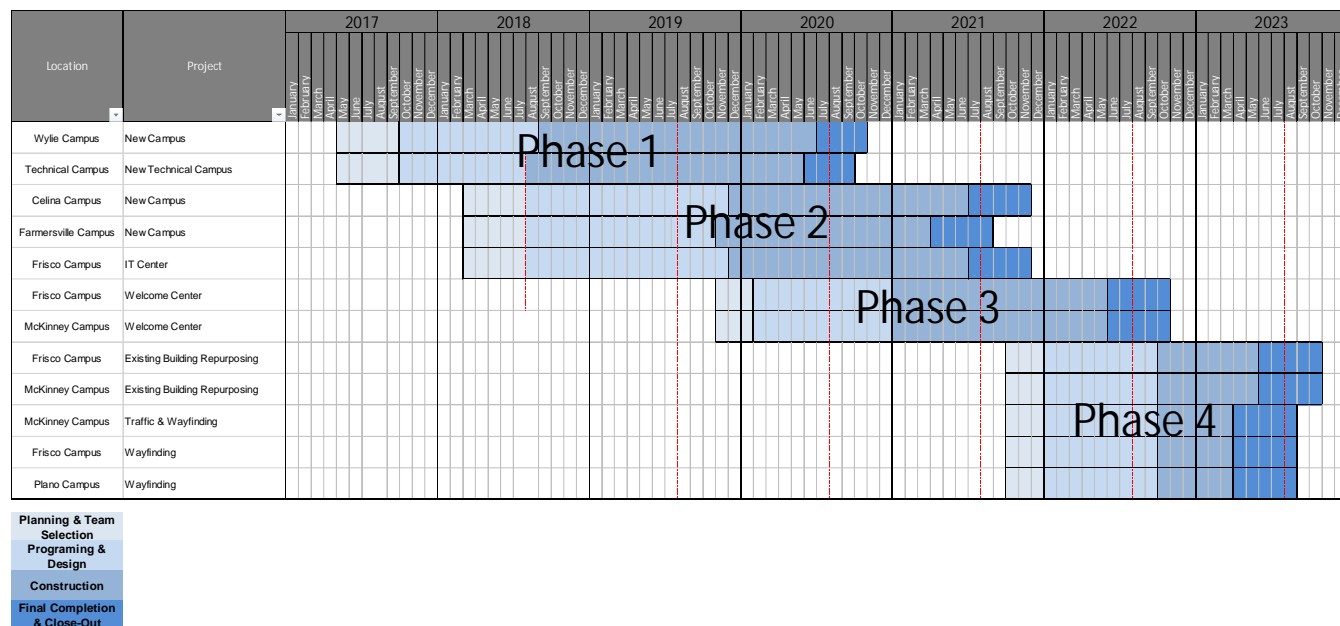
It is estimated that the Program Managers, Architects, Construction Managers, Sub-Consultants, and Sub-Contractors, under contract with Collin College for the 2017 Capital Improvement Program, have 430 employees contributing to the program's progress.

### 4.3 Community Outreach

- Collin College 2017 Capital Improvement Program Website
  - o <https://CollinCollege2017CIP.com>
  - o Includes the following features:
    - Program Overview
    - Project Scopes
    - Project Schedules
    - Project Budgets
    - Progress Photos/Renderings
    - Live On-Site Camera Feeds

## 5. Schedule

## 5.1 Program



## 5.2 Phase 1

### Wylie Campus

Activity	Baseline Finish	Planned Finish		Actual Finish	
BOT Approval of Program Manager	May 16, 2017	May 16, 2017	↑	May 16, 2017	✓
BOT Approval of A/E Procurement Method	May 23, 2017	May 23, 2017	↑	May 23, 2017	✓
BOT Approval of Construction Delivery Method	May 23, 2017	May 23, 2017	↑	May 23, 2017	✓
BOT Approval of Recommended Firms	August 22, 2017	August 22, 2017	↑	August 22, 2017	✓
Architect Mobilized	September 12, 2017	September 29, 2017	↓	September 28, 2017	✓
GMP Construction Documents Submittal	June 26, 2018	June 26, 2018	↑	June 26, 2018	✓
BOT Approval of GMP	August 28, 2018	August 28, 2018	↑	August 28, 2018	✓
Contractor Mobilized	September 10, 2018	September 12, 2018	⬇	September 12, 2018	✓
Foundations Complete	May 18, 2019	April 30, 2019	↑	April 23, 2019	✓
Structures Complete	June 28, 2019	June 28, 2019	↑	May 23, 2019	✓
Dry-In of Buildings Complete	October 26, 2019	October 26, 2019	↑	-	
Permanent Power Complete	September 17, 2019	September 17, 2019	↑	-	
Interior Finish-Out Complete	May 1, 2020	May 1, 2020	↑	-	
Substantial Completion	June 25, 2020	June 25, 2020	↑	-	
Final Completion	August 23, 2020	August 23, 2020	↑	-	
Student Occupancy	August 2020	August 2020	↑	-	

### Technical Campus

Activity	Baseline Finish	Planned Finish		Actual Finish	
BOT Approval of Program Manager	May 16, 2017	May 16, 2017	↑	May 16, 2017	✓
BOT Approval of A/E Procurement Method	May 23, 2017	May 23, 2017	↑	May 23, 2017	✓
BOT Approval of Construction Delivery Method	May 23, 2017	May 23, 2017	↑	May 23, 2017	✓
BOT Approval of Recommended Firms	August 22, 2017	August 22, 2017	↑	August 22, 2017	✓
Architect Mobilized	September 12, 2017	September 29, 2017	↓	September 28, 2017	✓
GMP Construction Documents Submittal	April 16, 2018	April 16, 2018	↑	April 19, 2018	✓
BOT Approval of GMP	June 26, 2018	June 26, 2018	↑	June 26, 2018	✓
Contractor Mobilized	July 6, 2018	July 20, 2018	⬇	July 26, 2018	✓
Foundations Complete	September 23, 2019	September 23, 2019	↑	July 29, 2019	✓
Structures Complete	November 18, 2019	November 18, 2019	↑	-	
Dry-In of Buildings Complete	December 20, 2019	December 20, 2019	↑	-	
Permanent Power Complete	TBD	TBD		-	
Interior Finish-Out Complete	May 8, 2020	May 8, 2020	↑	-	
Substantial Completion	June 11, 2020	June 11, 2020	↑	-	
Final Completion	July 7, 2020	July 7, 2020	↑	-	
Student Occupancy	August 2020	August 2020	↑	-	

## 5.3 Phase 2

### Celina Campus

Activity	Baseline Finish	Planned Finish		Actual Finish	
BOT Approval of Program Manager	September 25, 2018	February 14, 2018		February 14, 2018	✓
BOT Approval of A/E Procurement Method	September 25, 2018	March 27, 2018		March 27, 2018	✓
BOT Approval of Construction Delivery Method	September 25, 2018	March 27, 2018		March 27, 2018	✓
BOT Approval of Recommended A/E Firm	June 26, 2018	June 26, 2018		June 26, 2018	✓
BOT Approval of Recommended CM Firm	August 2018	August 2018		August 28, 2018	✓
Architect Mobilized	July 24, 2018	July 24, 2018		July 31, 2018	✓
Schematic Design Submittal	January 8, 2019	January 15, 2019		January 16, 2019	✓
Design Development Submittal	April 30, 2019	April 30, 2019		April 26, 2019	✓
Construction Document Submittal	September 20, 2019	September 20, 2019		-	
Contractor Mobilized	December 2019	December 2019		-	
Student Occupancy	August 2021	August 2021		-	

### Farmersville Campus

Activity	Baseline Finish	Planned Finish		Actual Finish	
BOT Approval of Program Manager	September 25, 2018	February 14, 2018		February 14, 2018	✓
BOT Approval of A/E Procurement Method	September 25, 2018	March 27, 2018		March 27, 2018	✓
BOT Approval of Construction Delivery Method	September 25, 2018	March 27, 2018		March 27, 2018	✓
BOT Approval of Recommended A/E Firm	June 26, 2018	June 26, 2018		June 26, 2018	✓
BOT Approval of Recommended CM Firm	August 2018	August 2018		August 28, 2018	✓
Architect Mobilized	July 24, 2018	July 24, 2018		July 31, 2018	✓
Schematic Design Submittal	December 20, 2018	December 18, 2018		December 18, 2018	✓
Design Development Submittal	April 2, 2019	April 19, 2019		April 26, 2019	✓
Construction Document Submittal	July 25, 2019	August 9, 2019		-	
Contractor Mobilized	November 2019	November 2019		-	
Student Occupancy	August 2021	August 2021		-	

### IT Center

Activity	Baseline Finish	Planned Finish		Actual Finish	
BOT Approval of Program Manager	September 25, 2018	February 14, 2018		February 14, 2018	✓
BOT Approval of A/E Procurement Method	September 25, 2018	March 27, 2018		March 27, 2018	✓
BOT Approval of Construction Delivery Method	September 25, 2018	March 27, 2018		March 27, 2018	✓
BOT Approval of Recommended A/E Firm	June 26, 2018	June 26, 2018		June 26, 2018	✓
BOT Approval of Recommended CM Firm	August 2018	August 2018		August 28, 2018	✓
Architect Mobilized	July 24, 2018	July 24, 2018		July 31, 2018	✓
Schematic Design Submittal	May 24, 2019	May 24, 2019		May 24, 2019	✓
Design Development Submittal	August 23, 2019	August 23, 2019		-	
Construction Document Submittal	December 9, 2019	December 9, 2019		-	
Contractor Mobilized	December 2019	December 2019		-	
Student Occupancy	August 2021	August 2021		-	

## 5.4 Phase 3

### Frisco Campus (Welcome Center)

Activity	Baseline Finish	Planned Finish		Actual Finish
BOT Approval of Program Manager	November 2019	November 2019	↑	-
BOT Approval of A/E Procurement Method	November 2019	November 2019	↑	-
BOT Approval of Construction Delivery Method	November 2019	November 2019	↑	-
Student Occupancy	August 2022	August 2022	↑	-

### McKinney Campus (Welcome Center)

Activity	Baseline Finish	Planned Finish		Actual Finish
BOT Approval of Program Manager	November 2019	November 2019	↑	-
BOT Approval of A/E Procurement Method	November 2019	November 2019	↑	-
BOT Approval of Construction Delivery Method	November 2019	November 2019	↑	-
Student Occupancy	August 2022	August 2022	↑	-

## 5.5 Phase 4

### Frisco Campus (Existing Repurpose)

Activity	Baseline Finish	Planned Finish		Actual Finish
BOT Approval of Program Manager	October 2021	October 2021	↑	-
BOT Approval of A/E Procurement Method	October 2021	October 2021	↑	-
BOT Approval of Construction Delivery Method	October 2021	October 2021	↑	-
Student Occupancy	August 2023	August 2023	↑	-

### McKinney Campus (Existing Repurpose)

Activity	Baseline Finish	Planned Finish		Actual Finish
BOT Approval of Program Manager	October 2021	October 2021	↑	-
BOT Approval of A/E Procurement Method	October 2021	October 2021	↑	-
BOT Approval of Construction Delivery Method	October 2021	October 2021	↑	-
Student Occupancy	August 2023	August 2023	↑	-

### McKinney Campus (Traffic / Wayfinding)

Activity	Baseline Finish	Planned Finish		Actual Finish
BOT Approval of Program Manager	October 2021	October 2021	↑	-
BOT Approval of A/E Procurement Method	October 2021	October 2021	↑	-
BOT Approval of Construction Delivery Method	October 2021	October 2021	↑	-
Student and Staff Use	August 2023	August 2023	↑	-

## Frisco Campus (Wayfinding)

Activity	Baseline Finish	Planned Finish		Actual Finish
BOT Approval of Program Manager	October 2021	October 2021	↑	-
BOT Approval of A/E Procurement Method	October 2021	October 2021	↑	-
BOT Approval of Construction Delivery Method	October 2021	October 2021	↑	-
Student and Staff Use	August 2023	August 2023	↑	-

## Plano Campus (Wayfinding)

Activity	Baseline Finish	Planned Finish		Actual Finish
BOT Approval of Program Manager	October 2021	October 2021	↑	-
BOT Approval of A/E Procurement Method	October 2021	October 2021	↑	-
BOT Approval of Construction Delivery Method	October 2021	October 2021	↑	-
Student and Staff Use	August 2023	August 2023	↑	-

## 6. Budget

### 6.1 Program Summary

## Program Wide Budget

Budget Group	Original Budget	Current Budget	Commitments	Expenditures	% of Budget Committed	% of Commitment Expended
Management, Design, & Pre-Construction	\$54,010,598	\$50,891,346	\$37,746,081	\$26,202,119	74%	69%
Investigation, Testing & Verification	\$9,330,450	\$8,015,908	\$3,489,538	\$1,610,305	44%	46%
Construction, Equipment & Furnishings	\$514,928,252	\$527,968,766	\$312,922,017	\$166,558,368	59%	53%
Misc.	\$439,079	\$513,082	\$97,528	\$97,528	19%	100%
Contingency	\$21,291,621	\$12,610,899	\$0	\$0	0%	0%
<b>Total Program Budget</b>	<b>\$600,000,000</b>	<b>\$600,000,000</b>	<b>\$354,255,164</b>	<b>\$194,468,320</b>		
% of Total Program Budget Committed	59.04%					
% of Total Commitments Expended	54.89%					
% of Total Program Budget Expended	32.41%					

## 6.2 Phase 1

### Wylie Campus

Budget Group	Original Budget	Current Budget	Commitments	Expenditures	% of Budget Committed	% of Commitment Expended
Management, Design, & Pre-Construction	\$15,051,440	\$13,495,577	\$13,492,623	\$10,395,892	100%	77%
Investigation, Testing & Verification	\$2,679,247	\$2,200,255	\$1,697,673	\$951,362	77%	56%
Construction, Equipment & Furnishings	\$133,174,284	\$149,770,768	\$140,911,070	\$67,226,925	94%	48%
Misc.	\$126,082	\$172,761	\$56,089	\$56,089	32%	100%
Contingency	\$6,571,649	\$445,429	\$0	\$0	0%	0%
<b>Total Project Budget</b>	<b>\$157,602,702</b>	<b>\$166,084,789</b>	<b>\$156,157,455</b>	<b>\$78,630,268</b>		
% of Total Project Budget Committed	94.02%					
% of Total Commitments Expended	50.35%					
% of Total Project Budget Expended	47.34%					

### Technical Campus

Budget Group	Original Budget	Current Budget	Commitments	Expenditures	% of Budget Committed	% of Commitment Expended
Management, Design, & Pre-Construction	\$14,713,206	\$13,710,625	\$13,646,335	\$10,593,238	100%	78%
Investigation, Testing & Verification	\$2,619,039	\$1,914,947	\$1,615,765	\$552,904	84%	34%
* Construction, Equipment & Furnishings	\$130,181,602	\$159,976,076	\$153,340,225	\$68,260,721	96%	45%
Misc.	\$123,249	\$142,545	\$23,317	\$23,317	16%	100%
Contingency	\$6,423,972	\$1,378,614	\$0	\$0	0%	0%
Allen ISD Reimbursement	-	(\$12,000,000)	(\$12,000,000)	-		
Allen EDC Grant	-	(\$400,000)	(\$400,000)	-		
<b>Total Project Budget</b>	<b>\$154,061,068</b>	<b>\$164,722,807</b>	<b>\$156,225,642</b>	<b>\$79,430,180</b>		
% of Total Project Budget Committed	94.84%					
% of Total Commitments Expended	50.84%					
% of Total Project Budget Expended	48.22%					

\* Actual Budget from bond funds is \$147,576,076 (\$159,976,076 less \$12,000,000 Allen ISD Reimbursement and \$400,000 Allen EDC Grant)

## 6.3 Phase 2

### Celina Campus

Budget Group	Original Budget	Current Budget	Commitments	Expenditures	% of Budget Committed	% of Commitment Expended
Management, Design, & Pre-Construction	\$5,078,807	\$3,934,714	\$3,896,135	\$2,054,001	99%	53%
Investigation, Testing & Verification	\$936,908	\$936,908	\$83,960	\$45,109	9%	54%
Construction, Equipment & Furnishings	\$46,569,862	\$46,572,562	\$2,700	\$2,700	0%	100%
Misc.	\$44,090	\$53,193	\$10,224	\$10,224	19%	100%
Contingency	\$2,482,596	\$3,614,887	\$0	\$0	0%	0%
<b>Total Project Budget</b>	<b>\$55,112,263</b>	<b>\$55,112,263</b>	<b>\$3,993,019</b>	<b>\$2,112,033</b>		
% of Total Project Budget Committed	7.25%					
% of Total Commitments Expended	52.89%					
% of Total Project Budget Expended	3.83%					

### Farmersville Campus

Budget Group	Original Budget	Current Budget	Commitments	Expenditures	% of Budget Committed	% of Commitment Expended
Management, Design, & Pre-Construction	\$2,539,404	\$2,171,819	\$2,152,530	\$1,241,871	99%	58%
Investigation, Testing & Verification	\$468,453	\$468,453	\$65,380	\$36,243	14%	55%
Construction, Equipment & Furnishings	\$23,284,932	\$24,457,954	\$0	\$0	0%	0%
Misc.	\$22,045	\$23,656	\$2,851	\$2,851	12%	100%
Contingency	\$1,241,298	\$1,384,251	\$0	\$0	0%	0%
<b>Total Project Budget</b>	<b>\$27,556,132</b>	<b>\$28,506,132</b>	<b>\$2,220,761</b>	<b>\$1,280,965</b>		
% of Total Project Budget Committed	7.79%					
% of Total Commitments Expended	57.68%					
% of Total Project Budget Expended	4.49%					

### IT Center

Budget Group	Original Budget	Current Budget	Commitments	Expenditures	% of Budget Committed	% of Commitment Expended
Management, Design, & Pre-Construction	\$5,472,853	\$4,252,194	\$4,188,459	\$1,565,617	99%	37%
Investigation, Testing & Verification	\$1,009,600	\$1,009,600	\$26,760	\$24,688	3%	92%
Construction, Equipment & Furnishings	\$50,183,042	\$50,183,042	\$0	\$0	0%	0%
Misc.	\$47,510	\$52,557	\$5,047	\$5,047	10%	100%
Contingency	\$2,675,210	\$3,890,823	\$0	\$0	0%	0%
<b>Total Project Budget</b>	<b>\$59,388,215</b>	<b>\$59,388,215</b>	<b>\$4,220,266</b>	<b>\$1,595,352</b>		
% of Total Project Budget Committed	7.11%					
% of Total Commitments Expended	37.80%					
% of Total Project Budget Expended	2.69%					

## 6.4 Phase 3

### Frisco Campus (Welcome Center)

Budget Group	Original Budget	Current Budget	Commitments	Expenditures	% of Budget Committed	% of Commitment Expended
Total Project Budget	\$26,329,788	\$26,099,401	\$0	\$0		
% of Total Project Budget Committed	0.00%					
% of Total Commitments Expended	0.00%					
% of Total Project Budget Expended	0.00%					

### McKinney Campus (Welcome Center)

Budget Group	Original Budget	Current Budget	Commitments	Expenditures	% of Budget Committed	% of Commitment Expended
Total Project Budget	\$36,861,704	\$36,169,164	\$0	\$0		
% of Total Project Budget Committed	0.00%					
% of Total Commitments Expended	0.00%					
% of Total Project Budget Expended	0.00%					

## 6.5 Phase 4

### Frisco Campus (Existing Repurpose)

Budget Group	Original Budget	Current Budget	Commitments	Expenditures	% of Budget Committed	% of Commitment Expended
Total Project Budget	\$7,321,091	\$7,321,091	\$0	\$0		
% of Total Project Budget Committed	0.00%					
% of Total Commitments Expended	0.00%					
% of Total Project Budget Expended	0.00%					

### McKinney Campus (Existing Repurpose)

Budget Group	Original Budget	Current Budget	Commitments	Expenditures	% of Budget Committed	% of Commitment Expended
Total Project Budget	\$9,151,364	\$9,151,364	\$0	\$0		
% of Total Project Budget Committed	0.00%					
% of Total Commitments Expended	0.00%					
% of Total Project Budget Expended	0.00%					

## McKinney Campus (Traffic / Wayfinding)

Budget Group	Original Budget	Current Budget	Commitments	Expenditures	% of Budget Committed	% of Commitment Expended
Total Project Budget	\$7,826,795	\$7,558,911	\$370,000	\$351,500		
% of Total Project Budget Committed	4.89%					
% of Total Commitments Expended	95.00%					
% of Total Project Budget Expended	4.65%					

## Frisco Campus (Wayfinding)

Budget Group	Original Budget	Current Budget	Commitments	Expenditures	% of Budget Committed	% of Commitment Expended
Total Project Budget	\$2,546,293	\$2,338,770	\$0	\$0		
% of Total Project Budget Committed	0.00%					
% of Total Commitments Expended	0.00%					
% of Total Project Budget Expended	0.00%					

## Plano Campus (Wayfinding)

Budget Group	Original Budget	Current Budget	Commitments	Expenditures	% of Budget Committed	% of Commitment Expended
Total Project Budget	\$5,092,585	\$4,677,541	\$0	\$0		
% of Total Project Budget Committed	0.00%					
% of Total Commitments Expended	0.00%					
% of Total Project Budget Expended	0.00%					

## 6.6 Phase A

## Public Safety Training Center

Budget Group	Current Budget	Commitments	Expenditures	% of Budget Committed	% of Commitment Expended
Construction Costs	\$31,068,022	\$31,068,022	\$31,068,022	100%	100%
Total Project Budget	\$31,068,022	\$31,068,022	\$31,068,022		

## 6.7 Building Fund Reimbursement

### Program Level

Budget Group	Original Budget	Current Budget	Commitments	Expenditures	% of Budget Committed	% of Commitment Expended
Building Fund Reimbursement	\$51,150,000	\$0	\$0	\$0	0%	0%
Program Contingency	\$0	\$1,801,530	\$0	\$0	0%	0%
Total Project Budget	\$51,150,000	\$1,801,530	\$0	\$0		

\* Building Fund Reimbursements for Wylie Campus land, Technical Campus land, and Public Safety Training Center construction costs were completed in August '18. Budgets, Commitments and Expenditures for these costs are reflected in each project.

## 7. Completed Items

### 7.1 General Program

- AECOM issued the Monthly Program Report for June '19 to Collin College on July 3<sup>rd</sup>
- AECOM conducted coordination meetings with the Executive Committee on July 1<sup>st</sup>, 8<sup>th</sup>, 15<sup>th</sup>, 22<sup>nd</sup>, and 29<sup>th</sup>
- AECOM presented a Program update to the Facilities and Construction Committee on July 30<sup>th</sup>
- AECOM conducted a programming meeting for potential Phase 3 and Phase 4 projects on July 23<sup>rd</sup>

### 7.2 Procurement

- Collin College and AECOM conducted a Program Procurement Update Meeting on July 23<sup>rd</sup>

### 7.3 Design

- AECOM held a meeting with the Industry Partners and SME's from Collin College with Beck Architecture, LLC, and JE Dunn Construction Company for the IT Center on July 2<sup>nd</sup>
- Beck Architecture, LLC conducted the 2<sup>nd</sup> Design Development review session with Collin College, AECOM and JE Dunn Construction Company for the IT Center on July 9<sup>th</sup>
- AECOM held a 50% CD Page Turn Review meeting with Collin College, Beck Architecture, LLC, and Bath Group, Inc. for the Celina Campus and Farmersville Campus on July 10<sup>th</sup>
- AECOM held a 75% CD Page Turn Review meeting with Collin College, Beck Architecture, LLC, and Vaughn Construction for the Farmersville Campus on July 24<sup>th</sup>
- Beck Architecture, LLC conducted the 3<sup>rd</sup> Design Development review session with Collin College, AECOM and JE Dunn Construction Company for the IT Center on July 30<sup>th</sup>
- Beck Architecture, LLC held a meeting on the Atrium Acoustics with Collin College, AECOM, JE Dunn Construction Company, and Idibri for the IT Center on July 30<sup>th</sup>

### 7.4 Pre-Construction

- No Pre-Construction items were completed at this time

## 7.5 Construction

- Collin College, AECOM, Perkins+Will, Inc. and McCarthy Building Companies, Inc. conducted Weekly OAC meetings on July 3<sup>rd</sup>, 10<sup>th</sup>, 17<sup>th</sup>, 24<sup>th</sup>, and 31<sup>st</sup> for the Technical Campus
- Collin College, AECOM, Page Southerland Page, Inc. and Skanska USA Building, Inc. conducted Weekly OAC meetings on July 11<sup>th</sup>, 18<sup>th</sup>, and 25<sup>th</sup> for the Wylie Campus
- McCarthy Building Companies, Inc. conducted a coordination meeting for Equipment in Building B with AECOM, Purdy-McGuire Inc., and Genesis Planning for the Technical Campus on July 1<sup>st</sup>
- Perkins+Will, Inc. held an Interiors Visioning/Branding Session with Collin College and AECOM for the Technical Campus on July 15<sup>th</sup>
- McCarthy Building Companies, Inc. conducted a coordination meeting for the stairs in the Academic Building with AECOM, Perkins+Will, Inc., Schuff Steel Company, and LA Fuess Partners, Inc. for the Technical Campus on July 24<sup>th</sup>
- McCarthy Building Companies, Inc. conducted a coordination meeting for Paint Booth with AECOM, Perkins+Will, Inc., Hoefer Wysocki, and Purdy McGuire for the Technical Campus on July 30<sup>th</sup>
- McCarthy Building Companies, Inc. conducted a final review meeting for the Equipment in Building B with Collin College, AECOM and Perkins+Will, Inc. for the Technical Campus on July 31<sup>st</sup>

See Appendix A for Construction Progress Photos

## 7.6 Acceptance and Close-Out

- No Acceptance and Close-Out Phase Items have been completed at this time

# 8. Pending Items

## 8.1 General Program

- No General Program items are pending at this time

## 8.2 Procurement

- IT Center design phase commissioning services
- IT Center design phase building envelope services

## 8.3 Design

- Cost sharing agreement with Hillwood Development for co-shared infrastructure at Celina Campus

## 8.4 Pre-Construction

- Coordination with the City of Celina and City of Farmersville on the permitting/zoning requirements for the Celina Campus and Farmersville Campus

## 8.5 Construction

- Building foundation, tilt wall panels, exterior building envelope and interior finish work at the Technical Campus
- Exterior building envelope and interior finish work at the Wylie Campus

See Appendix A for Construction Progress Photos

## 8.6 Acceptance and Close-Out

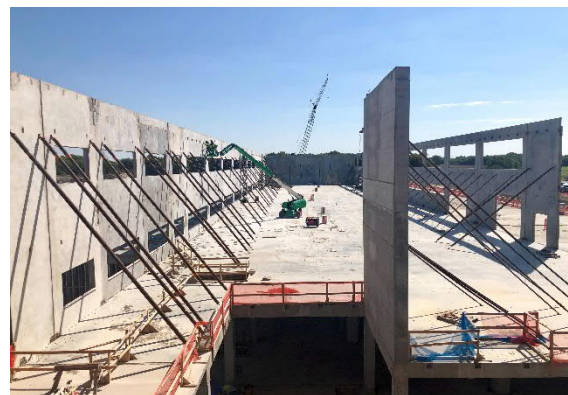
- No Acceptance and Close-Out activities are underway at this time

## Appendix A – Construction Progress Photos

### Technical Campus



Building B – 1<sup>st</sup> Panel Erection



Building B – Panels 100% Erected



Building A – West Side



Building A – North Truss



Garage – Elevated Deck Pour at Building D



Building C – Tilt Wall Panel Forms

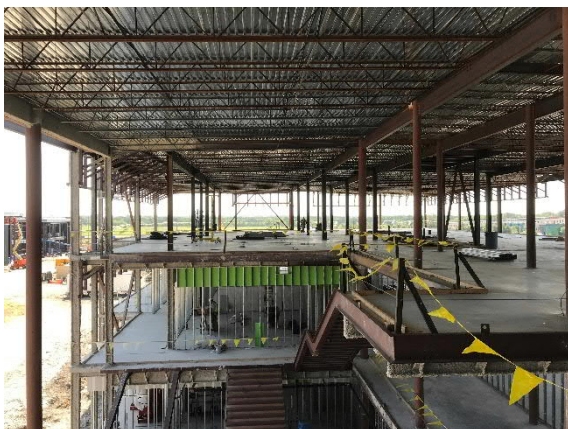


Garage – South Retaining Wall



Garage – Main Entrance

## Wylie Campus



Student Center – Facing West



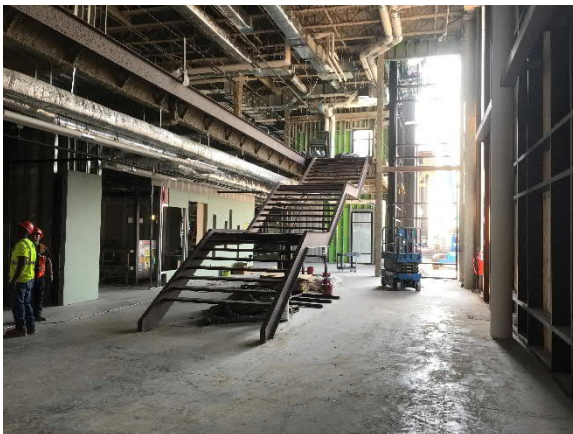
Student Center – North Elevation of Grand Stair



Central Utility Plant – East Elevation



Central Utility Plant – Cooling Towers



Library – Main Lobby Stairs



Library – Rotunda North Elevation



Campus Commons – South Elevation



Campus Commons – Interior View of  
Penthouse, Facing West