



# Gator Chef

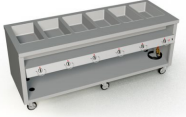
**NEW & USED  
RESTAURANT EQUIPMENT & SUPPLIES**


## Quote

12/15/2025

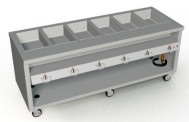
<b>To:</b> East Aurora Schools Dst 131 Michael Engle 310 Seminary Ave. Aurora, 60505 630-299-5545 (Contact) mengel@d131.org Associate Superintendent of Finance and Operations	<b>Project:</b> East Aurora H S 500 Tomcat Lane Aurora, IL 60505 United States	<b>From:</b> Gator Chef Michael Wartan 1808 Ogden Ave. Lisle, IL 60532 United States (888) 944-2867 (888) 944-2867 (Contact) (630) 417-6168 (Cell) mwartan@gatorchef.com VP of Sales and Operations
--	--	---

Job Reference Number: 17768

Item	Qty	Description	Sell	Sell Total
Station 1	1 ea	<b>HOT FOOD SERVING COUNTER / TABLE</b>	\$11,161.14	\$11,161.14
		Duke Manufacturing Thurmaduke Hot Food Unit, mobile, 88"W X 32"D X 36"H, 16ga stainless steel top, (6) sealed hot food wells, 1" drain line & valve, stainless steel body & undershelf, 5" swivel casters & brakes, 6 ft cord and plug, cULus, EPH Classified Dimensions 36(h) x 88(w) x 32(d)		
	1 ea	Voltage to be determined		
	1 ea	14ga stainless steel top, in lieu of standard	\$341.86	\$341.86
	1 ea	Internal Locking Device (on both ends), stainless steel pin & latch line up device under countertop, per unit price (Note: Units required to be portable)	\$204.94	\$204.94
	1 ea	Tray Slide, customer's side, 88" W x 12-1/4" D, solid stainless steel, on hinged brackets, with (2) 1/8" die-formed rubbing tracks, & mounted 34" high (specify any special height)	\$1,171.23	\$1,171.23
	1 ea	10 ft. cord & plug	\$57.56	\$57.56
	1 ea	500 Series		
	1 ea	Thurmaduke™ Designer Sneeze Guard, 87-3/4"W x 13"D x 18"H, self-service style, painted end panels, 13" wide shelf & 1/4" acrylic end guards, cULus, UL EPH Classified	\$2,842.17	\$2,842.17
	1 ea	Stainless Steel Shelf, in lieu of standard painted steel		
	1 ea	Stainless Steel Ends, in lieu of standard painted steel	\$97.68	\$97.68
	1 ea	LED light under shelf, wired to base, 120v/60/1-ph (this may require cord & plug option)	\$1,159.89	\$1,159.89
	1 ea	K-12 School Warranty - (2) years parts and labor		

Item	Qty	Description	Sell	Sell Total
			<b>ITEM TOTAL:</b>	<b>\$17,036.47</b>
Station 1	2 ea	<b>SERVING COUNTER, COLD FOOD</b>	\$12,173.64	\$24,347.28
		Duke Manufacturing Thurmaduke™ Cold Food Unit, mobile, 88"W x 32"D x 36"H, 16ga stainless steel top, NSF 7 stainless steel mechanical cold pan, 8" deep, touchscreen control (for optional mechanical control, see configuration options), 84-1/2" x 21-3/4" liner, 1" drain line & valve, hinged stainless steel louvred grill, stainless steel body & undershelf, 5" dia. swivel casters & brakes, 120v/60/1-ph, 6.9 amps, NEMA 5-15, cULus, UL EPH Classified Dimensions 36(h) x 88(w) x 32(d)		
	2 ea	Condensate evaporator	\$431.69	\$863.38
	2 ea	14ga stainless steel top, in lieu of standard	\$341.86	\$683.72
	2 ea	Internal Locking Device (on both ends), stainless steel pin & latch line up device under countertop, per unit price (Note: Units required to be portable)	\$204.94	\$409.88
	2 ea	Tray Slide, customer's side, 88" W x 12-1/4" D, solid stainless steel, on hinged brackets, with (2) 1/8" die-formed rubbing tracks, & mounted 34" high (specify any special height)	\$1,171.23	\$2,342.46
	2 ea	10 ft. cord & plug	\$57.56	\$115.12
	2 ea	500 Series		
	2 ea	Thurmaduke™ Designer Sneeze Guard, 87-3/4"W x 13"D x 18"H, self-service style, painted end panels, 13" wide shelf & 1/4" acrylic end guards, cULus, UL EPH Classified	\$2,842.17	\$5,684.34
	2 ea	Stainless Steel Shelf, in lieu of standard painted steel		
	2 ea	Stainless Steel Ends, in lieu of standard painted steel	\$97.68	\$195.36
	2 ea	LED light under shelf, wired to base, 120v/60/1-ph (this may require cord & plug option)	\$1,159.89	\$2,319.78
	2 ea	K-12 School Warranty - (2) years parts and labor		
			<b>ITEM TOTAL:</b>	<b>\$36,961.32</b>

Pizza  
Station  
n 2



2 ea	<b>HOT FOOD SERVING COUNTER / TABLE</b>	\$11,161.14	\$22,322.28
	Duke Manufacturing Thurmaduke Hot Food Unit, mobile, 88"W X 32"D X 36"H, 16ga stainless steel top, (6) sealed hot food wells, 1" drain line & valve, stainless steel body & undershelf, 5" swivel casters & brakes, 6 ft cord and plug, cULus, EPH Classified Dimensions 36(h) x 88(w) x 32(d)		
2 ea	Voltage to be determined		
2 ea	14ga stainless steel top, in lieu of standard	\$341.86	\$683.72
2 ea	Internal Locking Device (on both ends), stainless steel pin & latch line up device under countertop, per unit price (Note: Units required to be portable)	\$204.94	\$409.88
2 ea	Tray Slide, customer's side, 88" W x 12-1/4" D, solid stainless steel, on hinged brackets, with (2) 1/8" die-formed rubbing tracks, & mounted 34" high (specify any special height)	\$1,171.23	\$2,342.46
2 ea	10 ft. cord & plug	\$57.56	\$115.12

Initial: \_\_\_\_\_

Item	Qty	Description	Sell	Sell Total
	2 ea	Recess top to hold 18" x 26" pans, NOTE: not available with model #HTD-BASE-M heat in base option	\$905.24	\$1,810.48
	2 ea	500 Series		
	2 ea	Thurmaduke™ Designer Sneeze Guard, 87-3/4"W x 13"D x 18"H, self-service style, painted end panels, 13" wide shelf & 1/4" acrylic end guards, cULus, UL EPH Classified	\$2,842.17	\$5,684.34
	2 ea	Stainless Steel Shelf, in lieu of standard painted steel		
	2 ea	Stainless Steel Ends, in lieu of standard painted steel	\$97.68	\$195.36
	2 ea	Radiant Heater & LED Light, under shelf & wired to base, 120v/60/1-ph (this may require cord & plug option)	\$1,984.03	\$3,968.06
	2 ea	K-12 School Warranty - (2) years parts and labor		
<b>ITEM TOTAL:</b>				<b>\$37,531.70</b>

Station 3	2 ea	<b>SERVING COUNTER, COLD FOOD</b>	\$11,676.55	\$23,353.10
-----------	------	-----------------------------------	-------------	-------------

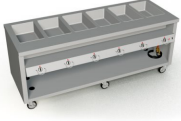




Duke Manufacturing

Thurmaduke™ Cold Food Unit, mobile, 74"W x 32"D x 36"H, 16ga stainless steel top, NSF 7 stainless steel mechanical cold pan, 8" deep, touchscreen control (for optional mechanical control, see configuration options), 70-1/2" x 21-3/4" liner, 1" drain line & valve, hinged stainless steel louvered grill, stainless steel body & undershelf, 5" dia. swivel casters & brakes, 120v/60/1-ph, 6.9 amps, NEMA 5-15, cULus, UL EPH Classified  
Dimensions 36(h) x 74(w) x 32(d)

2 ea	Condensate evaporator	\$431.69	\$863.38
2 ea	14ga stainless steel top, in lieu of standard	\$293.03	\$586.06
2 ea	Internal Locking Device (on both ends), stainless steel pin & latch line up device under countertop, per unit price (Note: Units required to be portable)	\$204.94	\$409.88
2 ea	Tray Slide, customer's side, 74" W x 12-1/4" D, solid stainless steel, on hinged brackets, with (2) 1/8" die-formed rubbing tracks, & mounted 34" high (specify any special height)	\$1,026.46	\$2,052.92
2 ea	10 ft. cord & plug	\$57.56	\$115.12
2 ea	500 Series		
2 ea	Thurmaduke™ Designer Sneeze Guard, 73-3/4"W x 16-1/2"D x 24"H, (1) sided self-service style, 2-tier with glass shelves, adjustable front glass, painted end panels & 1/4" acrylic end guards (NOTE: upper deck for wrapped food only), cULus, UL EPH Classified	\$5,134.92	\$10,269.84
2 ea	Stainless Steel Frame, in lieu of standard painted steel		
2 ea	Stainless Steel Ends, in lieu of standard painted steel	\$97.68	\$195.36
2 ea	LED Light, mounted under lower shelf, wired to base, 120v/60/1-ph (this may require cord & plug option)	\$1,138.96	\$2,277.92
2 ea	K-12 School Warranty - (2) years parts and labor		
<b>ITEM TOTAL:</b>			<b>\$40,123.58</b>

Station 4	3 ea	<b>HOT FOOD SERVING COUNTER / TABLE</b>	\$11,161.14	\$33,483.42
-----------	------	---	-------------	-------------

Item	Qty	Description	Sell	Sell Total
		Duke Manufacturing Thurmaduke Hot Food Unit, mobile, 88"W X 32"D X 36"H, 16ga stainless steel top, (6) sealed hot food wells, 1" drain line & valve, stainless steel body & undershelf, 5" swivel casters & brakes, 6 ft cord and plug, cULus, EPH Classified Dimensions 36(h) x 88(w) x 32(d)		
	3 ea	Voltage to be determined		
	3 ea	14ga stainless steel top, in lieu of standard	\$341.86	\$1,025.58
	3 ea	Internal Locking Device (on both ends), stainless steel pin & latch line up device under countertop, per unit price (Note: Units required to be portable)	\$204.94	\$614.82
	3 ea	Tray Slide, customer's side, 88" W x 12-1/4" D, solid stainless steel, on hinged brackets, with (2) 1/8" die-formed rubbing tracks, & mounted 34" high (specify any special height)	\$1,171.23	\$3,513.69
	3 ea	10 ft. cord & plug	\$57.56	\$172.68
	3 ea	500 Series		
	3 ea	Thurmaduke™ Designer Sneeze Guard, 87-3/4"W x 13"D x 18"H, self-service style, painted end panels, 13" wide shelf & 1/4" acrylic end guards, cULus, UL EPH Classified	\$2,842.17	\$8,526.51
	3 ea	Stainless Steel Shelf, in lieu of standard painted steel		
	3 ea	Stainless Steel Ends, in lieu of standard painted steel	\$97.68	\$293.04
	3 ea	LED light under shelf, wired to base, 120v/60/1-ph (this may require cord & plug option)	\$1,159.89	\$3,479.67
	3 ea	K-12 School Warranty - (2) years parts and labor		
		<b>ITEM TOTAL:</b>		<b>\$51,109.41</b>
1	1 ea	<b>ROLL-IN REFRIGERATOR</b>	\$10,507.96	\$10,507.96
		True Mfg. - General Foodservice SPEC SERIES® Refrigerator, roll-in, (2) stainless steel doors with locks, cam-lift hinges, digital temperature control, incandescent interior lighting, stainless steel ramps, stainless steel front & sides, stainless steel interior, 1/2 HP, 115v/60/1-ph, 11.8 amps, NEMA 5-15P, (accommodates 27"W x 29"D x 66"H carts, NOT included), cULus, UL EPH Classified, Made in USA Dimensions 83.75(h) x 68(w) x 34.75(d)		
	1 ea	7 year compressor warranty, 7 years parts warranty, 7 year labor warranty, standard. Visit <a href="http://www.truemfg.com">www.truemfg.com</a> for specifics.		
	1 ea	Left door hinged left, right door hinged right standard		
		<b>ITEM TOTAL:</b>		<b>\$10,507.96</b>
2	1 ea	<b>ROLL-IN REFRIGERATOR</b>	\$6,493.97	\$6,493.97
		True Mfg. - General Foodservice SPEC SERIES® Refrigerator, roll-in, one-section, (1) stainless steel door with lock, cam-lift hinges, digital temperature control, incandescent interior lighting, stainless steel front & sides, stainless steel interior, stainless steel ramp, R290 Hydrocarbon refrigerant,, 1/3 HP, 115v/60/1-ph, 8.9 amps, NEMA 5-15P, cULus, UL EPH Classified, Made in USA (accommodates 27"W x 29"D x 66"H cart, NOT included) Dimensions 83.75(h) x 35(w) x 34.75(d)		
	1 ea	7 year compressor warranty, 7 years parts warranty, 7 year labor		

Initial: \_\_\_\_\_

Item	Qty	Description	Sell	Sell Total
		warranty, standard. Visit <a href="http://www.truefmfg.com">www.truefmfg.com</a> for specifics.		
	1 ea	Door hinged right standard		
		<b>ITEM TOTAL:</b>		<b>\$6,493.97</b>
3	1 ea	<b>CUSTOM INBOUND FREIGHT</b>	\$2,890.42	\$2,890.42
		Gator Chef Restaurant Equipment Sales		
		Inbound freight of al equipment		
		<b>ITEM TOTAL:</b>		<b>\$2,890.42</b>
4	1 ea	<b>CUSTOM DELIVERY SERVICES</b>	\$4,250.00	\$4,250.00
		Gator Chef Restaurant Equipment Sales		
		Delivery and set in place of Gator Chef provided equipment		
		<b>ITEM TOTAL:</b>		<b>\$4,250.00</b>
5	1 ea	<b>CUSTOM SERVICE AND INSTALLATION SERVICE WORK</b>	\$2,825.00	\$2,825.00
		Gator Chef Restaurant Equipment Sales		
		Removal of existing equipment - if needed		
		<b>ITEM TOTAL:</b>		<b>\$2,825.00</b>
		Total		\$209,729.83

- A. **Price** – Quoted prices are subject to change without notice due to unforeseen circumstances such as cost increases of raw materials, imported products, or force majeure (which includes but not limited to natural disasters or government regulations). It's crucial to always consult with your sales consultant before finalizing your order to stay informed about any potential changes.
- B. **Delivery Services** – Unless explicitly stated otherwise, our delivery service is limited to curbside delivery. Paid local inside delivery services entail equipment reception at our warehouse and subsequent delivery to your business. With paid inside delivery service, Gator Chef personnel will uncrate, assemble, and position the equipment, with final mechanical connections (such as plumbing and electrical) to be arranged by others. Please ensure that all access points are adequately sized to accommodate the proposed equipment. Additional services such as crane rental or glazers are not included unless specified. Any necessary wall backing or enclosures must be provided by the customer. Installation and/or startup of merchandise is never included in basic delivery services and is subject to additional charges. With paid installation services, if Gator Chef installers need to return to the job site for additional visits, additional fees may be assessed. When shipping FOB at the destination the customer must inspect any damage at time of delivery and note any issues prior to signing, any freight claims from LTL freight must be made within 24 hours.
- C. **Warranty Coverage** – New equipment comes with standard manufacturer warranties, unless otherwise stated. These warranties do not cover product loss or revenue loss resulting from equipment malfunction or unavailability of parts. Used equipment in the Chicagoland area is covered by a 90-day parts and labor warranty, unless stated otherwise. Gator Chef is not responsible for economic loss, profit loss, or special, indirect or consequential damages, including without limitation, loss or damage arising from loss of product, whether or not on account of failure of equipment.
- D. **Payment Terms** – Payment terms involve a 50% deposit upon order placement, followed by the remaining 50% prior to delivery, unless otherwise stated. Payment terms may be available with prior authorization by Gator Chef. Please discuss this option with your sales associate for more information. These terms are subject to approval after credit assessment and security agreements. A monthly service charge of 1.5% interest applies to overdue accounts. Drop-ship orders require full payment before delivery. Gator Chef retains the right to impose additional storage charges, borne by the owner, for orders exceeding 60 days from approval. Customers will be responsible for any taxes, duties or other fees. Gator Chef has the right to have a security interest in the equipment until fully paid.
- E. **Order Cancellations, Returns, and Refunds** – Non-stock and/or custom merchandise is not returnable; all sales are final. Returns of merchandise require prior approval by Gator Chef. All returns will be subject to a 25% minimum restocking fee plus any freight/shipping charges
- F. **Credit Card Payment** - Credit card payments using CardX, VISA, MASTERCARD, DISCOVER, or AMEX will incur a surcharge fee. No surcharges apply to payments made by CASH, CHECK, ACH, or DEBIT CARDS with PIN entry. For clarification on these fees, please consult your sales consultant.

**G. Changes** – Gator Chef Terms and Conditions may be updated without prior notice.

Acceptance: \_\_\_\_\_ Date: \_\_\_\_\_

Printed Name: \_\_\_\_\_

Project Grand Total: \$209,729.83