

Engage, Challenge, and Inspire all students to create opportunities for themselves and others

SPECIAL EDUCATION PROGRAMMING UPDATE

**BETH SNEDEN
AUGUST 11, 2016**

ANNUAL REVIEW OF PROGRAMS

- ✖ Student needs (i.e. disability area, related services)
- ✖ Federal setting of students
- ✖ Number of students

EXPLANATION OF FEDERAL SETTINGS

- ✖ Setting I – less than 21% of day in special education setting
- ✖ Setting II – more than 21% of day and less than 60% of day in special education setting
- ✖ Setting III – more than 60% of school day in special education setting
- ✖ Setting IV – Public Separate Facility

STUDENT NEEDS DRIVE

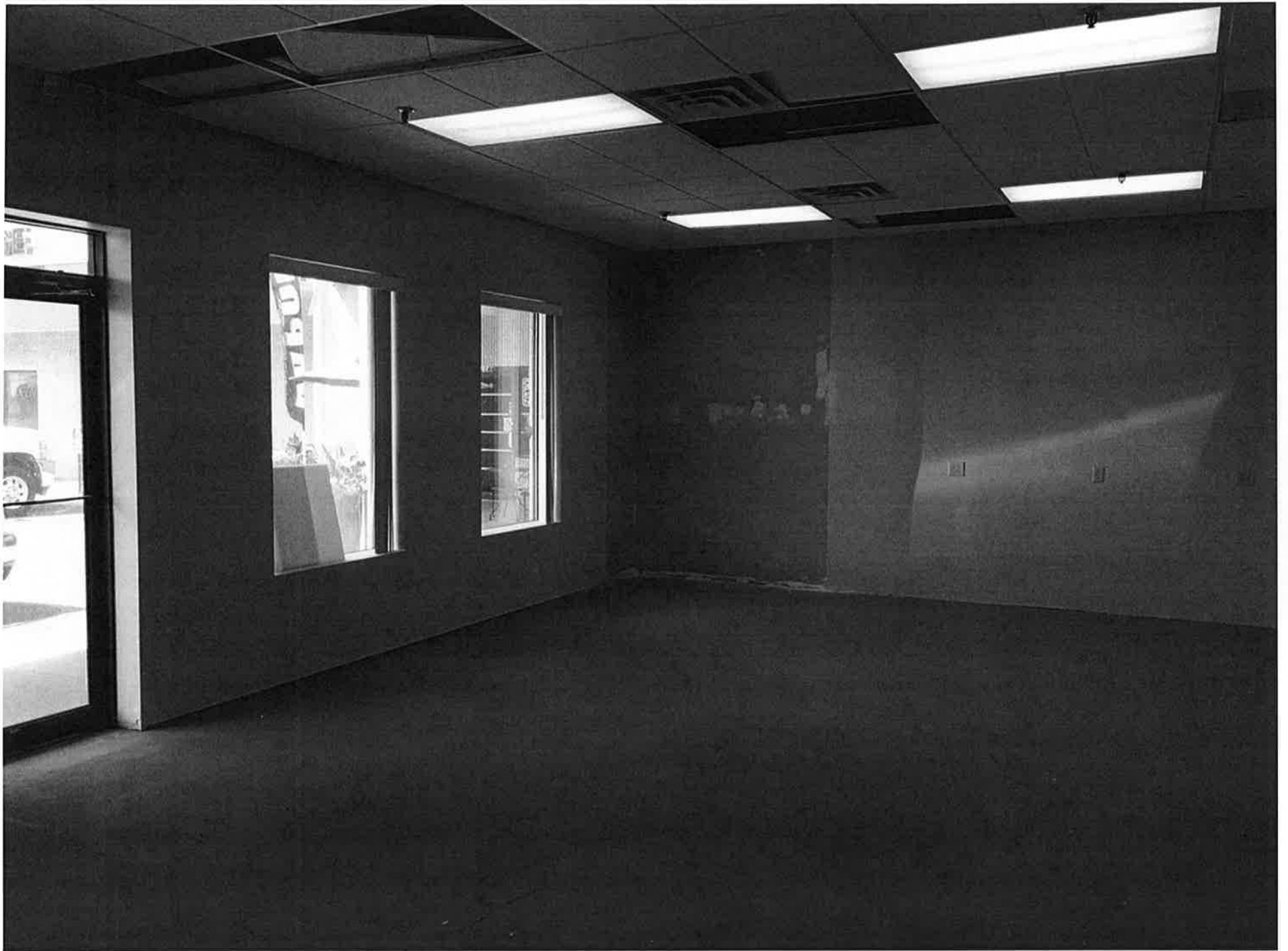
- ✕ Programs
- ✕ Staffing
- ✕ Assistive Technology
- ✕ Curriculum and resources
- ✕ Contracted services
 - + Physical Therapy
 - + Deaf and Hard of Hearing
 - + Blind and Visually Impaired Services

DISTRICT TRENDS

- ✖ Increase in Early Childhood Special Education needs
- ✖ Increase in severity of behaviors of early childhood and elementary students
- ✖ Increase in the number of students requiring a transition/post high school programming

NEW PROGRAMMING FOR 2016-2017

- ✖ Transition Program (18-21 years of age)
 - + Programming at 916 Vocational Education
 - + PSEO
 - + Work Experience
 - + Life Skill Instruction





EXPANSION OF HIGH SCHOOL WORK EXPERIENCE PROGRAMMING (14-18)

- ✖ Steps
- ✖ College and Career Readiness
- ✖ Work Experience
- ✖ On-the-job training/Work Experience
- ✖ PAES (Practical Assessment and Exploration System)- Vocational Assessment. Typically full year experience at 916.
- ✖ Situational Assessment (summer work experience)

CONTENT OF WORK EXPERIENCE CLASSES

- × Recreation and Leisure
- × Employability Skills
- × School based to community to employment
- × Adherence to worksite rules, attendance, attitude, hygiene
- × Getting a job and keeping a job
- × Career Exploration
- × Budgeting
- × Community resources
- × Job site safety
- × Communication with employer

LEVEL II/III UPDATE

- ✖ 2015-16 Changed program model for O. H. Anderson for Level II/III
- ✖ Emotional/Behavioral Disorders (E/BD),
Autistic Spectrum Disorders (ASD),
Developmentally Cognitively Delayed(DCD)
- ✖ Consultation with 916

CHANGES FOR LEVEL II/III FOR 2016-17

- ✖ Remodeled space
- ✖ Separation between programming for students with ASD and E/BD
- ✖ Continued partnership with 916

CONTINUED FOCUS AREAS

- ✖ Ongoing staff training
- ✖ Build consistent programming between sites
- ✖ Utilizing space for effective and efficient programming
- ✖ Build staff capacity
- ✖ Shift staff based on student needs

QUESTIONS.....
