



Early Learning Center Reimagined





For *each and every student* to
DISCOVER their possibilities
and thrive





EDINA PUBLIC SCHOOLS

is a *dynamic* learning community delivering educational *excellence* and preparing all students to *realize their full potential*

Through academics, activities, and opportunities, we encourage creativity, foster curiosity, and develop critical thinking skills.

We support every student's educational journey by creating a caring and inclusive school culture that supports the whole student.





Agenda

- 1:** The Early Learning Center
- 2:** Reimagining the ELC
- 3:** Proposed Plan
- 4:** Thank You & Questions



**Welcome to the
Early Learning Center**



Programs & Services

- Early Intervention Services
- Early Childhood Screening
- Early Childhood Special Education
- PreKindergarten Programs
- Early Childhood Family Education
- Family Literacy
- Summer Camps
- Wrap-around Childcare
- Early Learning Corps





ECSE
160

PreK
198

ECFE
217

FY25 ELC Student Enrollment



The ELC Team

- Licensed Teachers & Specialists - 40
- Paras - 30
- Childcare - 3
- Admin Support & Due Process - 4
- Program Specialists - 2
- Assistant Director - 1
- Volunteers - 100s



PTO & Volunteers

- Popular events
- Book fair
- Care & concern for teachers and staff
- SVMS partnership



How are our students served?

Class Type	Age	# Classes Offered
PreK - all day, M-F	4	4
PreK - all day, M-F	3	2
PreK - AM	3/4	3/3
PreK - PM	Mixed/4	1/1
Special Education Only	3-5	3
Special Ed Developmental Delay	3-5	2
Special Ed Transition (3 after 9/1)	3	1
Speech	3-5	1
Family Literacy	B-5+Adults	2





How else are students & families served?

Community Outreach Programming and Services

- Screening - 600-700 children per year
- Early intervention services
- Early Learning Corps - literacy volunteers
- ECFE ([link to table](#))
- Volunteer language interpretation services
- South View Middle School students - 100+ classroom volunteers





Reimagining our Early Learning Center



Edina Strategic Initiatives



Strategy A: Advance Academic Excellence, Growth, and Readiness

A.5 Provide robust early childhood education by increasing participation in district Early Learning programming to ensure alignment with Kindergarten readiness skills.

Strategy C: Engage Parents, Schools, and Community

C.5 Create environments that are conducive to learning and facilitate constructive student interaction.

- ...taskforce will recommend reallocation, renovation, or building or space to meet identified needs.



Fundamental Challenges

- No room for growth
- Safety concern with childcare
- Inequitable classroom spaces
- Disconnected flow of programming
- Limited problem-solving space for students and collaboration space for staff
- Need for better lighting in some of the rooms
- Inadequate STEAM space
- Parents wonder about adult size lockers, inappropriate sized fixtures, and dishwashers in odd spaces such as classrooms
- Space not conducive to learning, i.e., lack of natural light and cluttered classrooms

ECC / NORMANDALE

- Childcare
- Offices
- Screening / Affey
- 4's
- ECFE
- 3's
- ECSE
- Gross motor/smart sensory
- Storage
- B&G
- Break



Main Entrance





Play Spaces





**Welcome
to ECFE**





Learning spaces





Proposed Plan



ELC as a Resident Enrollment Strategy

FY25 Comparison of Neighboring Districts PreK Classes & Enrollments		
School District Name	# PreK Classes Offered	# Students
Edina	14	210
Eden Prairie	25	495
Wayzata	37	581
Minnetonka	22	296





Current Resident Information

Screening 2022-2023

Total screened 589

Residents of Edina school boundaries 529

Students screened who live outside of Edina 60

Screenings 2023-2024

Total screened 681

Edina residents screened 574

Students who reside outside of Edina boundaries 107

PreK & ECFE 2024-2025

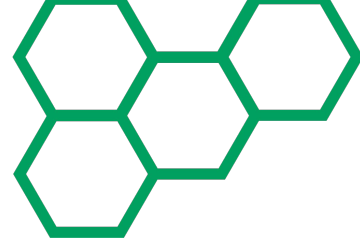
ECFE - 61% resident families

Preschool - 74% resident families





Learning Neighborhoods



Areas designated by program, age, and instructional type

Gross motor and sensory areas for each and every student, used by all staff for programming

Accessible bathrooms in each class with changing tables





Reimagined ELC (online example)





Learning Neighborhood/Pod Concept





Courtyard Concept - online example





*Destination for
Edina
Families with
Early
Learners -
photos found
online of early
learning spaces*






Blake Early Learning Center





Thriving in Early Learning Neighborhoods

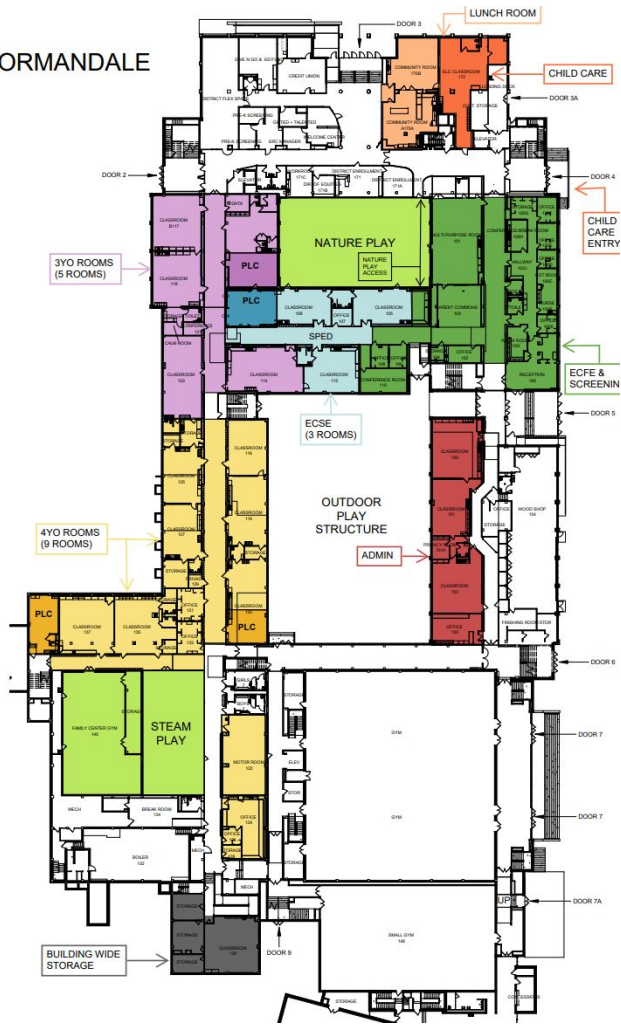
1. Age-appropriate environments
2. Continuity & familiarity
3. Tailored resources and support
4. Peer interaction & support
5. Staff collaboration



Our kids make
this world a better
Place by just being
in it!



ECC / NORMANDE

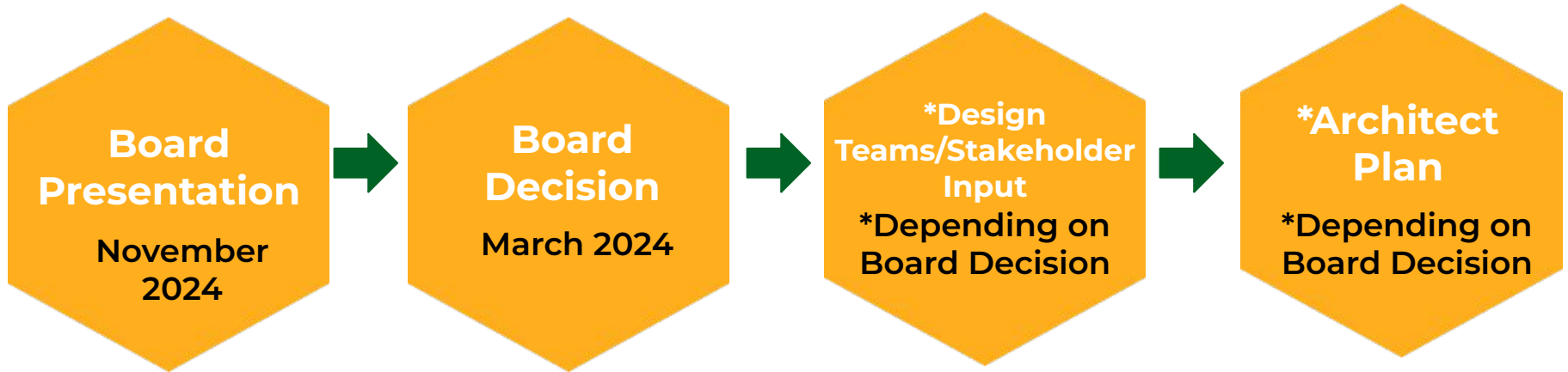


Destination Edina ELC

- Three more classrooms for growth
- Safety addressed
- Equitable classroom spaces
- Program continuity
- Well-lit and motivating learning spaces
- Gross motor opportunities for each and every child
- Age-appropriate sinks, bathrooms in each classroom, engaging environments
- Collaboration
- Strong sense of community and belonging



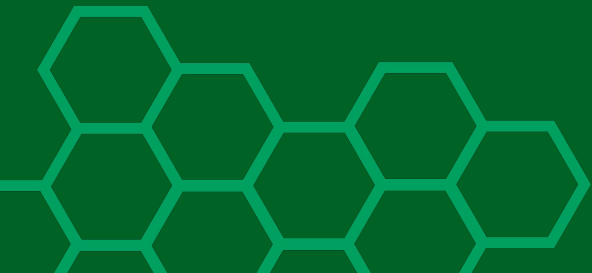
Proposed Timeline





Thank you!

Edina Public Schools





QUESTIONS?

Edina Public Schools

