



Communities In Schools®

Texas



Lewisville ISD Annual Update
May 2026

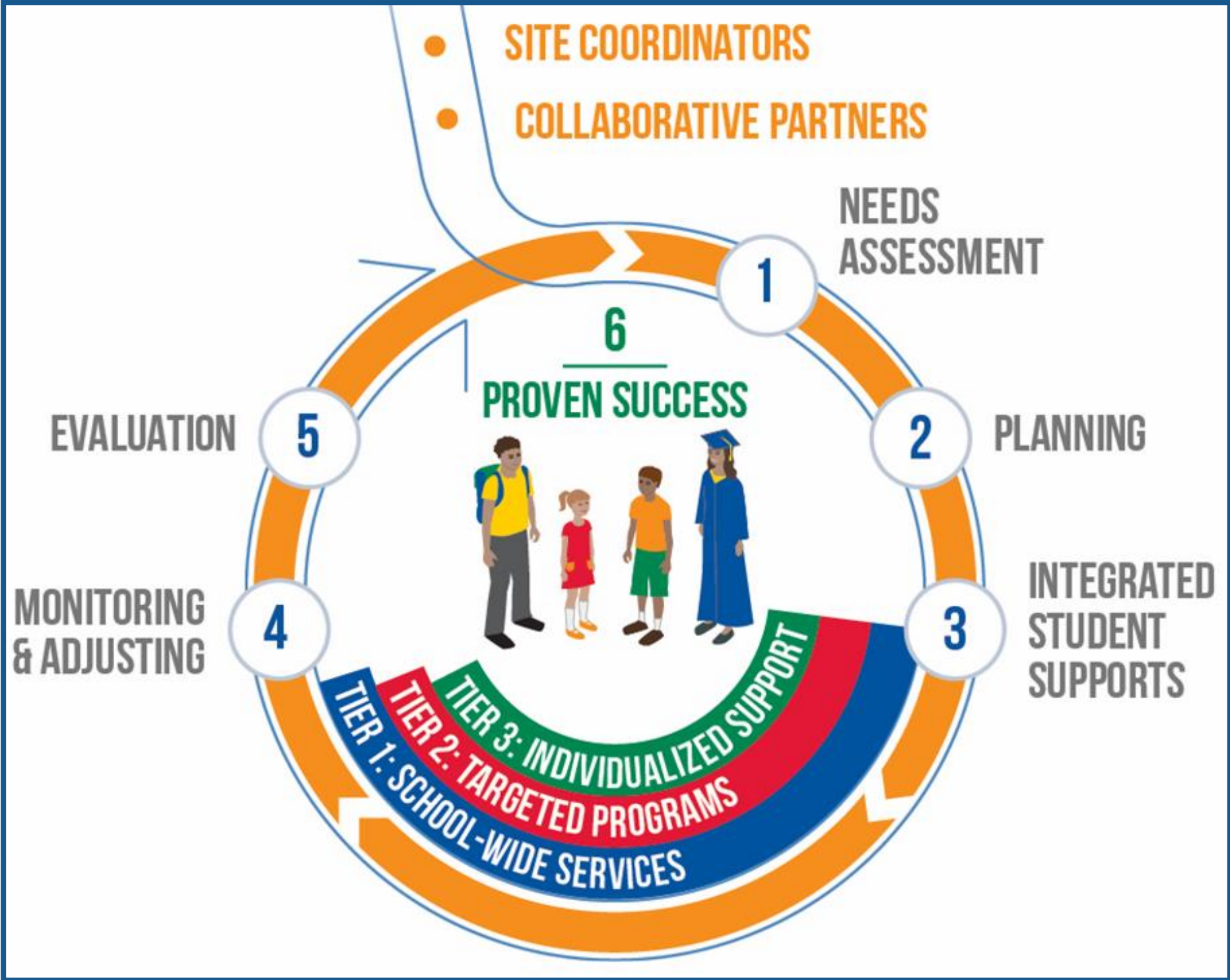


OUR MISSION

The mission of Communities In Schools of North Texas is to surround students with a community of support, empowering them to stay in school and achieve in life.

OUR MODEL

CISNT uses an evidence-based model of integrate student support.



2024-2025 OUTCOMES

OVERVIEW OF PROGRAMS

72,066

School Wide Services
Provided

1,999

Students Received
Case Management
Services

47,667.25

Hours of Case
Management Services
Provided

421

Students Received
Afterschool Services

256

Students Received
High Impact Tutoring

316

Afterschool Parents
Engagement



413

Volunteers provided

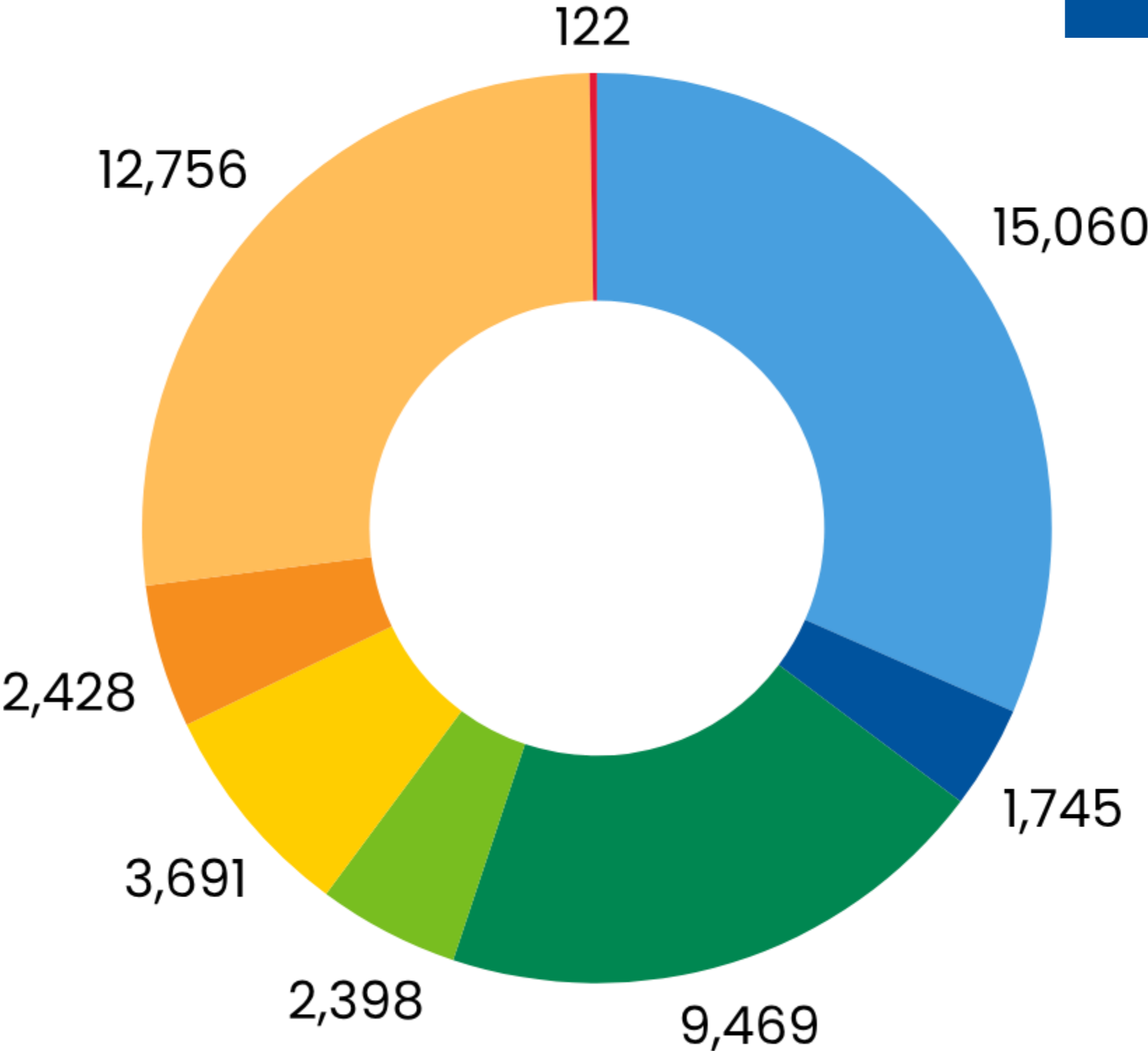
3,792

hours of service

2024-2025 OUTCOMES

CASE MANAGEMENT SERVICES

- Mental & Behavioral Health
- Enrichment
- Health & Human Services
- Parent & Family Engagement
- College & Career Readiness
- Academic Support
- Case Management
- Attendance & Engagement



2024-2025 OUTCOMES



100%

of CISNT 7th-12th graders stayed in school



99.4%

of case managed students promoted



100%

of eligible seniors graduated



90.3%

of case managed students improved in a targeted issue

2025-2026 CIS PROGRAMS

The Colony High School

Giffin Middle

Lakeside Middle

Camey Elementary

Ethridge Elementary

Peters Colony Elementary

Lewisville High School

Killough High

Durham Middle

Huffines Middle

Central Elementary

Lakeland Elementary

Mill Street Elementary

Rockbrook Elementary

Vickery Elementary

Harmon High

Hedrick Middle

DeLay Middle

Degan Elementary

Lewisville Elementary

Parkway Elementary

Southridge Elementary

ACE AFTERSCHOOL 21ST CENTURY GRANT



- Provides 3 hours of out of school time support at each campus per day
- Operates 5 days a week, for 29 weeks Fall-Spring and 5 weeks in Summer
- Includes busing transportation home for students after the program
- Includes daily snack and dinner through partnership with ARAMARK
- Activities focus on: Homework help, Academic Enrichment, School Engagement, Parent and Family Engagement, and Enrichment Opportunities.
- Enrolls 75-100 students per campus, per year

2024-2025: PROGRESS TO DATE

- > 2,114 students are receiving 37,025 hours of case management service.
- > 322 students are participating in afterschool programs.
- > 290 mentors and community volunteers are deployed to campuses.
- > 139 students are receiving 15 additional hours of high-impact tutoring.
- > 89 students are receiving additional mental and behavioral health services through licensed professionals.

PARTNERING WITH PARENTS



Parent engagement builds positive relationships between families and schools, which creates a reliable support system for students. Students tend to show higher achievements, better attendance, and stronger motivation to learn.

As a kindergartener, E. struggled with letters and numbers, but learning a second language made this challenge even greater. However, the relationship that CISNT and school staff have built with his family has allowed him to build confidence and gain ownership of his learning, because he knows he has a system of support around him that he can rely on to help him succeed in school and in life. Now in third grade, E.'s English has gotten much better! He is reading at grade level (or higher) and has all A's on his report card! Overall, his story shows that active parent engagement truly contributes to improved confidence, behavior, and long-term student

**THANKS
FOR BEING
ALL IN FOR
KIDS!**

