



Board Action Required ☒

No Action Required ☐

To: Dr. Jeff Turner & Board of Trustees
From: Kelly Penny
Subject: Annual Review of investment performance
Date: September 15, 2010

Cc: Sid Grant

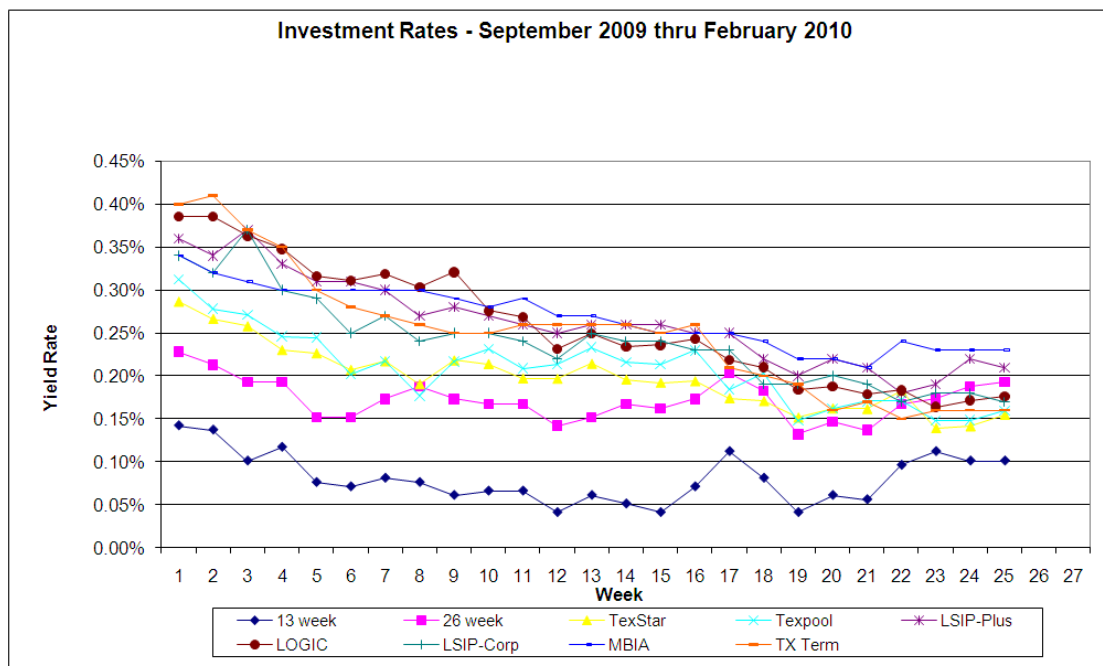
Review of Current Performance on Investments

The attached graphs and data compare the rates paid on the investment pools utilized with the rate for the 13 and 26 week T-Bill auctions. A distinct advantage of the investment pools is that investor funds are very liquid. Money can be transferred overnight either in or out of pools. Multiple governmental investment pools are utilized to diversify the investments.

The District has experienced a substantial decrease in interest earning over the past two years due to the downturn in economy and market. However, the District received greater earnings from pool investments than we would have from investing in T-Bills. As noted, interest rates have dropped substantially again over the prior year resulting in less interest earnings for the district.

Recommendation: The Coppell ISD Board of Trustees accepts the annual review the portfolio performance as presented.

	T-Bills		T-Bills		LSIP-Plus		LSIP-Corp		
Date	13 week	26 week	TexStar	Texpool	LOGIC	LOGIC	MBIA	TX Term	
2009-2010									
08-Sep	0.14%	0.23%	0.29%	0.31%	0.36%	0.39%	0.34%	0.34%	0.40%
14-Sep	0.14%	0.21%	0.27%	0.28%	0.34%	0.39%	0.32%	0.32%	0.41%
21-Sep	0.10%	0.19%	0.26%	0.27%	0.37%	0.36%	0.37%	0.31%	0.37%
28-Sep	0.12%	0.19%	0.23%	0.25%	0.33%	0.35%	0.30%	0.30%	0.35%
05-Oct	0.08%	0.15%	0.23%	0.24%	0.31%	0.32%	0.29%	0.30%	0.30%
13-Oct	0.07%	0.15%	0.21%	0.20%	0.31%	0.31%	0.25%	0.30%	0.28%
19-Oct	0.08%	0.17%	0.22%	0.22%	0.30%	0.32%	0.27%	0.30%	0.27%
26-Oct	0.08%	0.19%	0.19%	0.18%	0.27%	0.30%	0.24%	0.30%	0.26%
02-Nov	0.06%	0.17%	0.22%	0.22%	0.28%	0.32%	0.25%	0.29%	0.25%
09-Nov	0.07%	0.17%	0.21%	0.23%	0.27%	0.28%	0.25%	0.28%	0.25%
16-Nov	0.07%	0.17%	0.20%	0.21%	0.26%	0.27%	0.24%	0.29%	0.26%
23-Nov	0.04%	0.14%	0.20%	0.21%	0.25%	0.23%	0.22%	0.27%	0.26%
30-Nov	0.06%	0.15%	0.21%	0.23%	0.26%	0.25%	0.25%	0.27%	0.26%
07-Dec	0.05%	0.17%	0.20%	0.22%	0.26%	0.23%	0.24%	0.26%	0.26%
14-Dec	0.04%	0.16%	0.19%	0.21%	0.26%	0.24%	0.24%	0.25%	0.25%
21-Dec	0.07%	0.17%	0.19%	0.23%	0.25%	0.24%	0.23%	0.25%	0.26%
28-Dec	0.11%	0.20%	0.17%	0.18%	0.25%	0.22%	0.23%	0.25%	0.21%
04-Jan	0.08%	0.18%	0.17%	0.20%	0.22%	0.21%	0.19%	0.24%	0.20%
11-Jan	0.04%	0.13%	0.15%	0.15%	0.20%	0.18%	0.19%	0.22%	0.19%
18-Jan	0.06%	0.15%	0.16%	0.16%	0.22%	0.19%	0.20%	0.22%	0.16%
25-Jan	0.06%	0.14%	0.16%	0.17%	0.21%	0.18%	0.19%	0.21%	0.17%
01-Feb	0.10%	0.17%	0.18%	0.17%	0.18%	0.18%	0.17%	0.24%	0.15%
08-Feb	0.11%	0.17%	0.14%	0.15%	0.19%	0.16%	0.18%	0.23%	0.16%
15-Feb	0.10%	0.19%	0.14%	0.15%	0.22%	0.17%	0.18%	0.23%	0.16%
22-Feb	0.10%	0.19%	0.16%	0.16%	0.21%	0.18%	0.17%	0.23%	0.16%



	T-Bills		T-Bills		LSIP-		LSIP-		
Date	13 week	26 week	TexStar	Texpool	Plus	LOGIC	Corp	MBIA	TX Term
2009-2010									
1-Mar	0.13%	0.19%	0.16%	0.17%	0.20%	0.17%	0.18%	0.24%	0.17%
08-Mar	0.15%	0.21%	0.16%	0.16%	0.21%	0.17%	0.18%	0.23%	0.19%
15-Mar	0.17%	0.24%	0.17%	0.18%	0.22%	0.18%	0.19%	0.22%	0.19%
22-Mar	0.16%	0.24%	0.17%	0.15%	0.22%	0.17%	0.19%	0.22%	0.18%
29-Mar	0.15%	0.24%	0.15%	0.15%	0.22%	0.18%	0.18%	0.23%	0.17%
05-Apr	0.18%	0.27%	0.19%	0.17%	0.23%	0.19%	0.20%	0.23%	0.17%
12-Apr	0.16%	0.24%	0.17%	0.17%	0.23%	0.18%	0.19%	0.23%	0.19%
19-Apr	0.15%	0.22%	0.17%	0.17%	0.23%	0.19%	0.19%	0.21%	0.20%
26-Apr	0.15%	0.24%	0.17%	0.16%	0.23%	0.20%	0.20%	0.21%	0.22%
03-May	0.17%	0.25%	0.17%	0.19%	0.24%	0.19%	0.20%	0.22%	0.20%
10-May	0.16%	0.23%	0.18%	0.18%	0.25%	0.19%	0.21%	0.23%	0.19%
17-May	0.16%	0.23%	0.19%	0.21%	0.23%	0.22%	0.23%	0.23%	0.19%
24-May	0.17%	0.22%	0.19%	0.18%	0.23%	0.22%	0.23%	0.24%	0.19%
31-May	0.16%	0.22%	0.19%	0.20%	0.24%	0.25%	0.24%	0.25%	0.19%
07-Jun	0.13%	0.21%	0.20%	0.22%	0.26%	0.25%	0.26%	0.25%	0.21%
14-Jun	0.07%	0.15%	0.18%	0.21%	0.27%	0.25%	0.26%	0.26%	0.21%
21-Jun	0.12%	0.17%	0.19%	0.21%	0.28%	0.26%	0.26%	0.27%	0.23%
28-Jun	0.16%	0.22%	0.18%	0.19%	0.29%	0.27%	0.26%	0.29%	0.21%
03-Jul	0.17%	0.21%	0.20%	0.23%	0.32%	0.27%	0.30%	0.28%	0.24%
12-Jul	0.15%	0.20%	0.19%	0.23%	0.32%	0.29%	0.29%	0.28%	0.23%
19-Jul	0.16%	0.20%	0.21%	0.24%	0.34%	0.31%	0.32%	0.29%	0.24%
28-Jul	0.15%	0.20%	0.20%	0.22%	0.33%	0.30%	0.32%	0.30%	0.23%
01-Aug	0.16%	0.20%	0.21%	0.24%	0.34%	0.31%	0.32%	0.30%	0.23%
08-Aug	0.16%	0.20%	0.22%	0.23%	0.35%	0.32%	0.35%	0.29%	0.23%
15-Aug	0.15%	0.20%	0.22%	0.23%	0.37%	0.33%	0.36%	0.30%	0.23%
22-Aug	0.16%	0.19%	0.21%	0.23%	0.37%	0.33%	0.37%	0.30%	0.24%
29-Aug	0.16%	0.19%	0.21%	0.21%	0.36%	0.32%	0.36%	0.30%	0.24%

