

**August 2018**

Derby Public Schools

# Performance Dashboard

---

## Irving School

Aimee Misset, Principal

*“People without information cannot act. People with information cannot help but act.”*

*Ken Blanchard*



## Promotion:

Percent of students promoted

	K	1	2	3	4	5
<b>June 2018</b>	100%	98%	100%	98%	100%	100%
<b>June 2017</b>	100%	100%	100%	100%	100%	100%
<b>June 2016</b>	100%	100%	100%	100%	100%	100%
<b>June 2015</b>	100%	100%	100%	100%	100%	100%
<b>June, 2014</b>	100%	98%	100%	100%	100%	100%

## Departing 5<sup>th</sup> Grader Plans

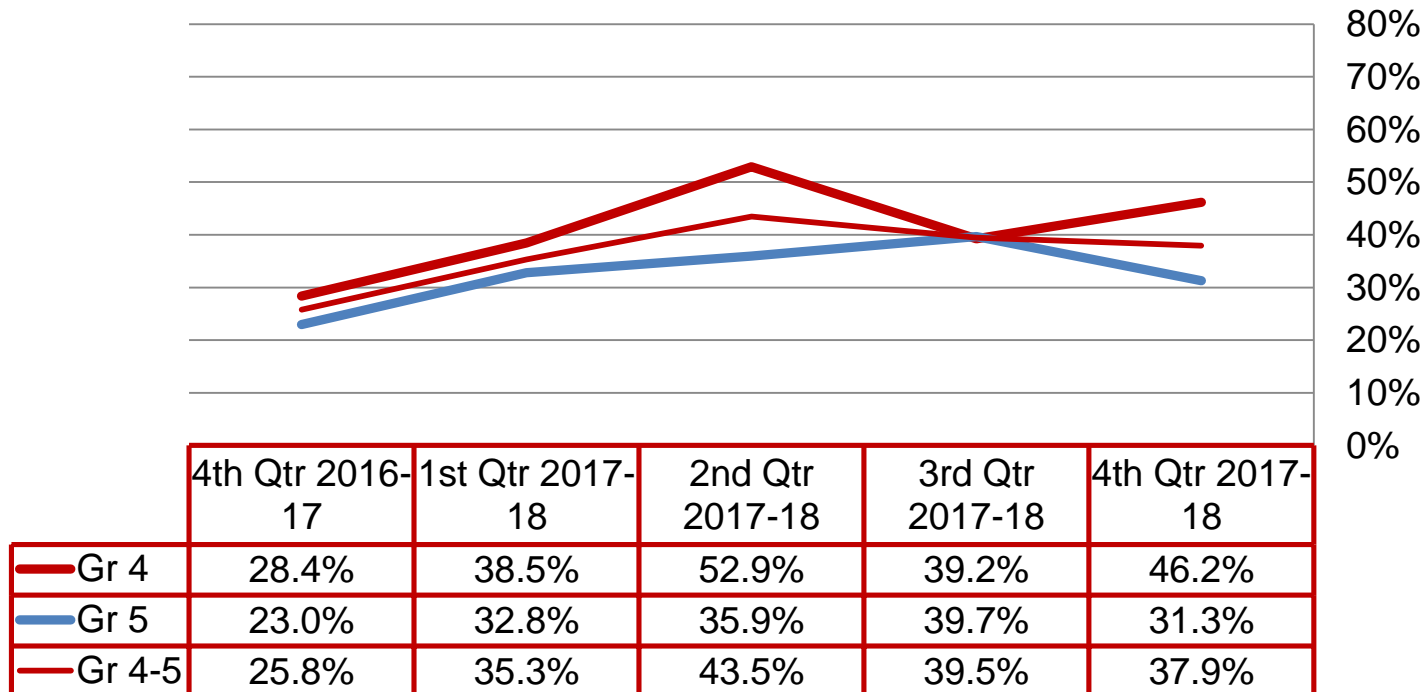
Percent of 5<sup>th</sup> graders who plan to:



# Quarterly Data

## High Grades

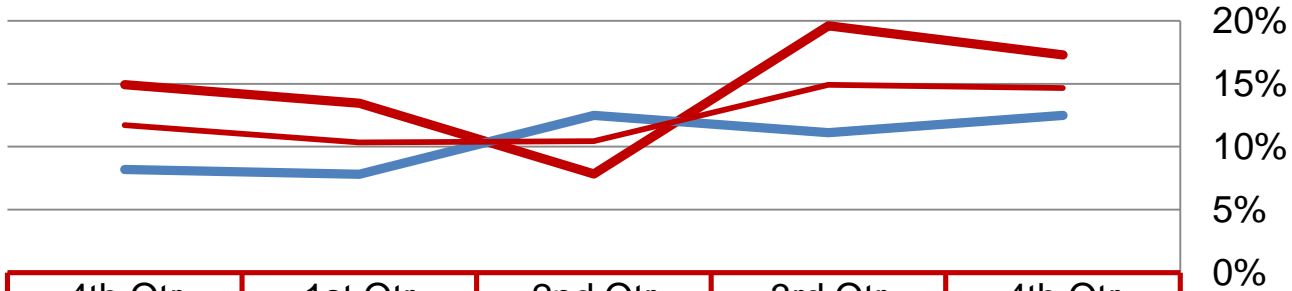
Percent of students earning A+, A, A-, B+, B, B- in all subject areas:



## Failing Grades

Percent of students failing at least one course:

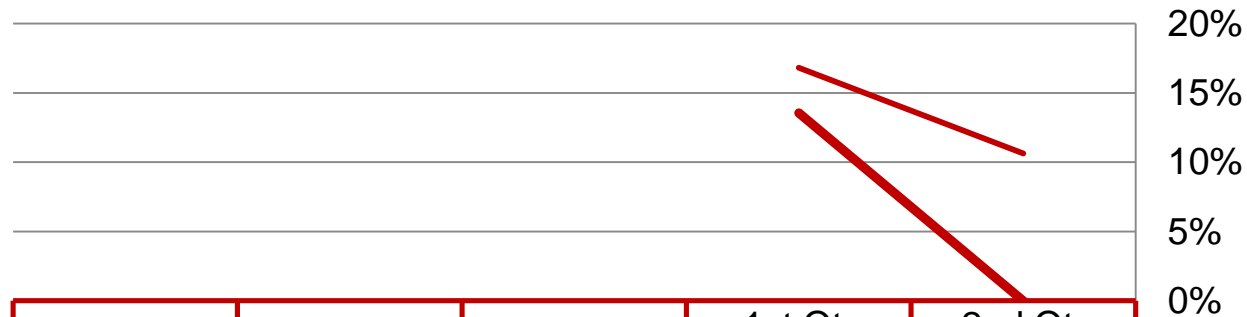
Irving School



	4th Qtr 2016-17	1st Qtr 2017-18	2nd Qtr 2017-18	3rd Qtr 2017-18	4th Qtr 2017-18
Gr 4	14.9%	13.5%	7.8%	19.6%	17.3%
Gr 5	8.2%	7.8%	12.5%	11.1%	12.5%
Gr 4-5	11.7%	10.3%	10.4%	14.9%	14.7%

## Failing Grades

Percent of students failing at least two courses:



				1st Qtr 2013-14	2nd Qtr 2013-14
3.3%				13.6%	0.0%
24.1%				20.4%	22.2%
13.2%				16.8%	10.6%

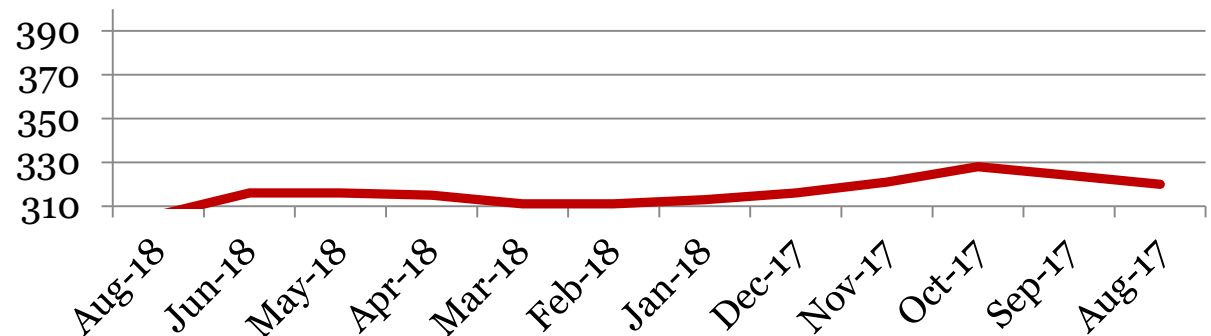
# Monthly Data

Irving School

## Enrollment – 1<sup>st</sup> of the month

	K	1	2	3	4	5	Total
<b>Aug-18</b>	46	52	43	46	59	60	<b>306</b>
<b>Jun-18</b>	50	45	47	58	52	64	<b>316</b>
<b>May-18</b>	50	45	47	58	52	64	<b>316</b>
<b>Apr-18</b>	50	46	46	58	51	64	<b>315</b>
<b>Mar-18</b>	50	45	46	56	51	63	<b>311</b>
<b>Feb-18</b>	49	46	44	58	50	64	<b>311</b>
<b>Jan-18</b>	49	46	45	58	51	64	<b>313</b>
<b>Dec-17</b>	50	47	45	59	51	64	<b>316</b>
<b>Nov-17</b>	52	49	45	59	52	64	<b>321</b>
<b>Oct-17</b>	53	51	46	61	54	63	<b>328</b>
<b>Sep-17</b>	50	51	45	62	53	63	<b>324</b>
<b>Aug-17</b>	50	50	45	62	52	61	<b>320</b>

## Total Student Enrollment

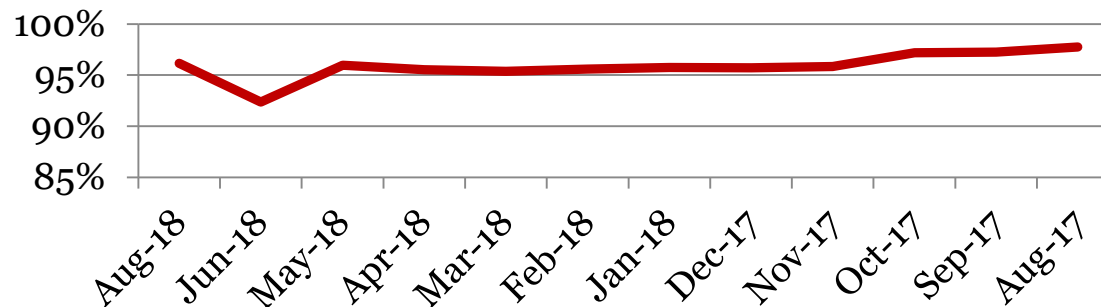


## Attendance – Students

Average daily percent present:

	K	1	2	3	4	5	Total
<b>Aug-18</b>	95.7	94.1	96.5	93.5	97.9	98.4	<b>96.2</b>
<b>Jun-18</b>	88.0	94.3	92.4	94.9	94.5	90.3	<b>92.4</b>
<b>May-18</b>	95.4	94.8	96.1	97.0	95.7	96.4	<b>96.0</b>
<b>Apr-18</b>	94.3	94.6	95.6	97.5	95.1	95.8	<b>95.5</b>
<b>Mar-18</b>	93.0	94.5	95.7	95.8	96.4	96.5	<b>95.4</b>
<b>Feb-18</b>	95.7	94.5	95.0	95.6	95.6	96.7	<b>95.6</b>
<b>Jan-18</b>	94.4	95.1	95.4	96.7	95.5	96.8	<b>95.7</b>
<b>Dec-17</b>	93.2	94.5	97.2	96.9	95.5	96.6	<b>95.7</b>
<b>Nov-17</b>	94.0	94.0	96.4	97.3	96.6	96.2	<b>95.8</b>
<b>Oct-17</b>	97.7	96.2	97.5	97.9	97.6	96.2	<b>97.2</b>
<b>Sep-17</b>	96.9	97.6	97.6	96.8	97.1	97.5	<b>97.2</b>
<b>Aug-17</b>	97.1	97.0	98.9	98.0	96.7	98.8	<b>97.8</b>

**Total Student Attendance**



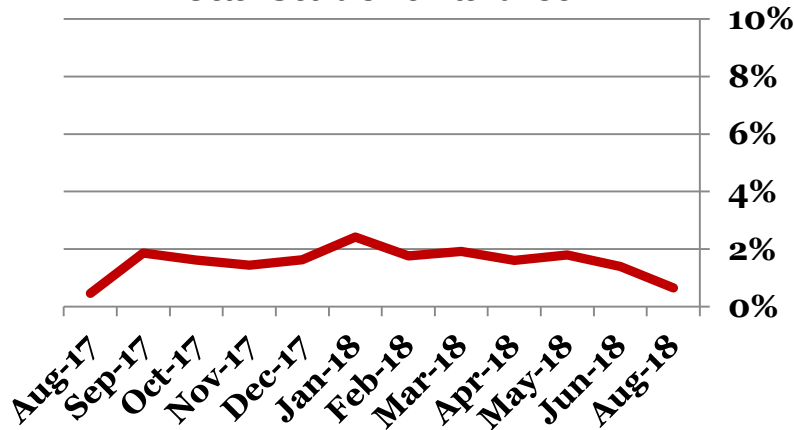
Tardies Average daily percent tardy:

	K	1	2	3	4	5	Total
Aug-18	0	0	0	1	0	2	1
Jun-18	2	1	1	1	1	2	1
May-18	2	1	2	1	2	2	2
Apr-18	2	2	2	1	2	1	2
Mar-18	2	2	1	1	3	1	2
Feb-18	2	2	2	2	3	1	2
Jan-18	2	2	3	3	3	1	2
Dec-17	2	1	2	1	2	2	2
Nov-17	2	1	1	1	2	1	1
Oct-17	2	1	1	1	3	2	2
Sep-17	2	2	1	2	3	2	2
Aug-17	1	0	0	0	1	0	0

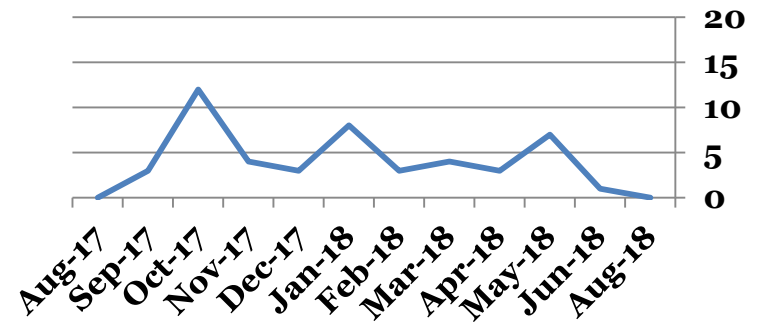
Tardies Number of students tardy 5 or more days:

	K	1	2	3	4	5	Total
Aug-18	0	0	0	0	0	0	0
Jun-18	1	0	0	0	0	0	1
May-18	4	0	0	0	1	2	7
Apr-18	1	0	0	0	1	1	3
Mar-18	2	0	0	0	2	0	4
Feb-18	2	0	0	0	1	0	3
Jan-18	3	1	0	1	3	0	8
Dec-17	1	0	1	0	1	0	3
Nov-17	4	0	0	0	0	0	4
Oct-17	4	1	1	0	5	1	12
Sep-17	0	0	0	0	3	0	3
Aug-17	0	0	0	0	0	0	0

**Total Student Tardies**



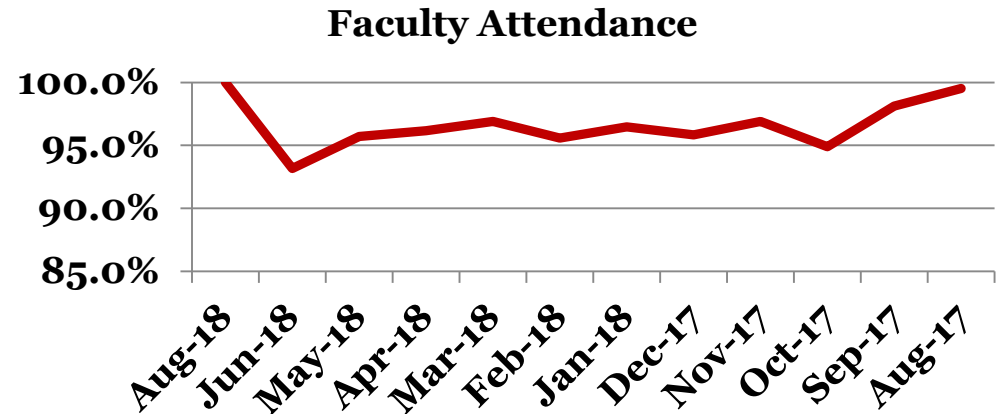
**# Students over Threshold**



## Attendance – Faculty

Average daily percent present:

	Total
Aug-18	100.0
Jun-18	93.2
May-18	95.7
Apr-18	96.2
Mar-18	96.7
Feb-18	95.8
Jan-18	96.5
Dec-17	95.8
Nov-17	96.9
Oct-17	94.9
Sep-17	98.1
Aug-17	99.5



*\*This indicator reflects certified staff and does not include absences created by class trips, professional development, workman's comp and FMLA. However % may be reduced due to long term illness beyond FMLA.*



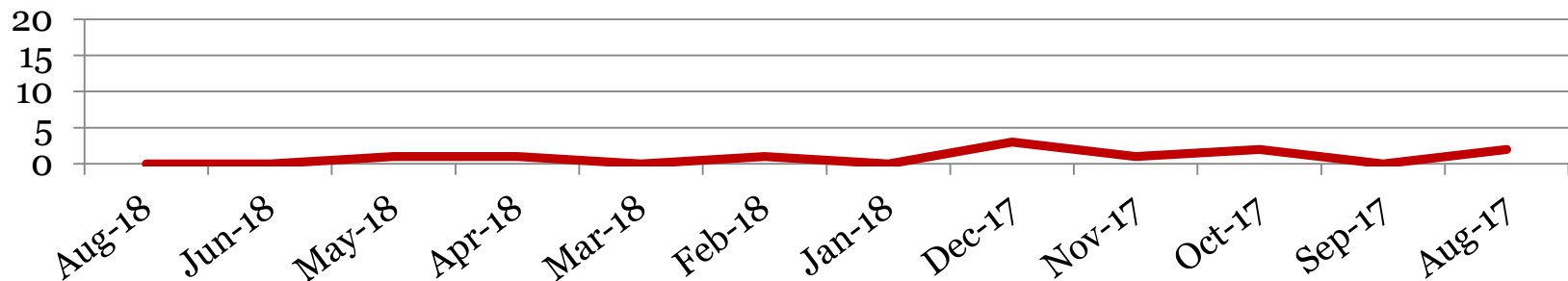
## Suspensions – Out of School

Irving School

Number of student suspensions (total days of suspension):

	K		1		2		3		4		5		Total	
<b>Aug-18</b>	0	(0)	0	(0)	0	(0)	0	(0)	0	(0)	0	(0)	<b>0</b>	<b>(0)</b>
<b>Jun-18</b>	0	(0)	0	(0)	0	(0)	0	(0)	0	(0)	0	(0)	<b>0</b>	<b>(0)</b>
<b>May-18</b>	0	(0)	1	(1)	0	(0)	0	(0)	0	(0)	0	(0)	<b>1</b>	<b>(1)</b>
<b>Apr-18</b>	0	(0)	0	(0)	0	(0)	0	(0)	0	(0)	1	(3)	<b>1</b>	<b>(3)</b>
<b>Mar-18</b>	0	(0)	0	(0)	0	(0)	0	(0)	0	(0)	0	(0)	<b>0</b>	<b>(0)</b>
<b>Feb-18</b>	0	(0)	0	(0)	0	(0)	0	(0)	1	(1)	0	(0)	<b>1</b>	<b>(1)</b>
<b>Jan-18</b>	0	(0)	0	(0)	0	(0)	0	(0)	0	(0)	0	(0)	<b>0</b>	<b>(0)</b>
<b>Dec-17</b>	0	(0)	0	(0)	1	(3)	0	(0)	0	(0)	2	(2)	<b>3</b>	<b>(5)</b>
<b>Nov-17</b>	0	(0)	0	(0)	0	(0)	1	(1)	0	(0)	0	(0)	<b>1</b>	<b>(1)</b>
<b>Oct-17</b>	0	(0)	2	(3)	0	(0)	0	(0)	0	(0)	0	(0)	<b>2</b>	<b>(3)</b>
<b>Sep-17</b>	0	(0)	0	(0)	0	(0)	0	(0)	0	(0)	0	(0)	<b>0</b>	<b>(0)</b>
<b>Aug-17</b>	0	(0)	0	(0)	0	(0)	0	(0)	0	(0)	2	(4)	<b>2</b>	<b>(4)</b>

**Total Out of School Suspension**

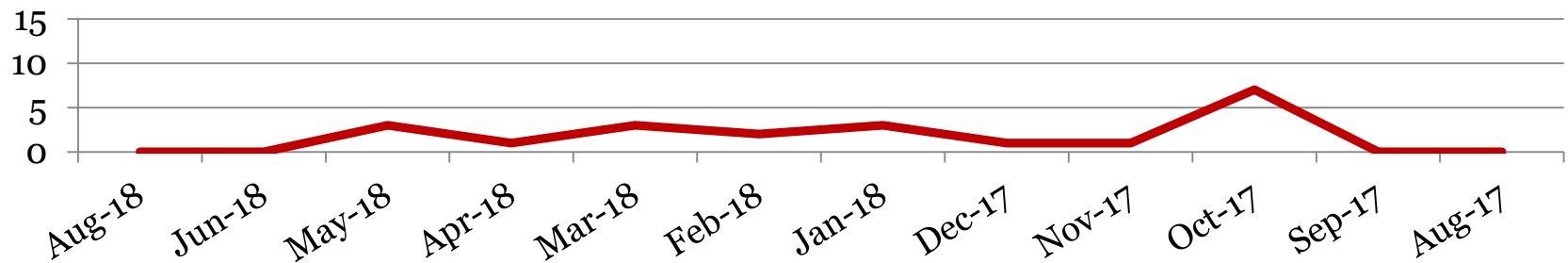


## Suspensions – In School

Number of student suspensions (total days of suspension):

	<b>K</b>		<b>1</b>		<b>2</b>		<b>3</b>		<b>4</b>		<b>5</b>		<b>Total</b>	
<b>Aug-18</b>	0	(0)	0	(0)	0	(0)	0	(0)	0	(0)	0	(0)	<b>0</b>	<b>(0)</b>
<b>Jun-18</b>	0	(0)	0	(0)	0	(0)	0	(0)	0	(0)	0	(0)	<b>0</b>	<b>(0)</b>
<b>May-18</b>	0	(0)	0	(0)	0	(0)	0	(0)	0	(0)	3	(3)	<b>3</b>	<b>(3)</b>
<b>Apr-18</b>	0	(0)	0	(0)	0	(0)	0	(0)	1	(1)	0	(0)	<b>1</b>	<b>(1)</b>
<b>Mar-18</b>	0	(0)	0	(0)	0	(0)	0	(0)	3	(3)	0	(0)	<b>3</b>	<b>(3)</b>
<b>Feb-18</b>	0	(0)	0	(0)	0	(0)	0	(0)	2	(2)	0	(0)	<b>2</b>	<b>(2)</b>
<b>Jan-18</b>	0	(0)	0	(0)	0	(0)	0	(0)	1	(0.5)	2	(4)	<b>3</b>	<b>(4.5)</b>
<b>Dec-17</b>	0	(0)	0	(0)	0	(0)	0	(0)	1	(1)	0	(0)	<b>1</b>	<b>(1)</b>
<b>Nov-17</b>	0	(0)	0	(0)	0	(0)	0	(0)	1	(1)	0	(0)	<b>1</b>	<b>(1)</b>
<b>Oct-17</b>	1	(0.5)	0	(0)	0	(0)	1	(1)	2	(2)	3	(5.5)	<b>7</b>	<b>(9)</b>
<b>Sep-17</b>	0	(0)	0	(0)	0	(0)	0	(0)	0	(0)	0	(0)	<b>0</b>	<b>(0)</b>
<b>Aug-17</b>	0	(0)	0	(0)	0	(0)	0	(0)	0	(0)	0	(0)	<b>0</b>	<b>(0)</b>

**Total In School Suspensions**



## Newly Enrolled Students

	<b>K</b>	<b>1</b>	<b>2</b>	<b>3</b>	<b>4</b>	<b>5</b>	<b>Total</b>
<b>Aug-18</b>	31	5	4	1	4	10	<b>55</b>
<b>Jun-18</b>	0	0	0	0	0	0	<b>0</b>
<b>May-18</b>	0	1	0	0	0	0	<b>1</b>
<b>Apr-18</b>	0	0	1	0	1	0	<b>2</b>
<b>Mar-18</b>	0	1	1	2	0	1	<b>5</b>
<b>Feb-18</b>	1	1	1	0	1	1	<b>5</b>
<b>Jan-18</b>	1	1	0	0	0	0	<b>2</b>
<b>Dec-17</b>	0	1	1	0	0	0	<b>2</b>
<b>Nov-17</b>	0	0	0	1	0	1	<b>2</b>
<b>Oct-17</b>	0	0	0	0	0	1	<b>1</b>
<b>Sep-17</b>	4	1	1	1	1	1	<b>9</b>
<b>Aug-17</b>	29	2	4	2	4	2	<b>43</b>

## Departing Students

Students who have left the school during the month for any reason:

	<b>K</b>	<b>1</b>	<b>2</b>	<b>3</b>	<b>4</b>	<b>5</b>	<b>Total</b>
<b>Aug-18</b>	0	3	0	0	0	0	<b>3</b>
<b>Jun-18</b>	0	0	0	0	0	0	<b>0</b>
<b>May-18</b>	0	0	0	0	0	0	<b>0</b>
<b>Apr-18</b>	0	0	0	0	0	0	<b>0</b>
<b>Mar-18</b>	0	0	0	0	0	0	<b>0</b>
<b>Feb-18</b>	0	2	0	2	0	2	<b>6</b>
<b>Jan-18</b>	0	1	1	0	1	0	<b>3</b>
<b>Dec-17</b>	1	2	1	0	0	0	<b>4</b>
<b>Nov-17</b>	2	2	0	1	1	1	<b>7</b>
<b>Oct-17</b>	1	1	0	2	2	0	<b>6</b>
<b>Sep-17</b>	2	1	0	1	0	0	<b>4</b>
<b>Aug-17</b>	4	3	8	7	4	8	<b>34</b>