



Office of

**TEACHING & LEARNING**

---

MIDWAY INDEPENDENT SCHOOL DISTRICT

# Midway Academic Progress MOY 2025-2026

# **ASSESSMENTS TOOLS**

# NWEA MAP

NWEA MAP (Measures of Academic Progress) Growth is a dynamic adaptive assessment that measures students' achievement and growth in K–12 math, reading, language usage, and science. Midway uses this tool primarily for Reading.

The assessment provides teachers with accurate, actionable evidence to help inform instructional strategies regardless of how far students are above or below grade level. MAP Growth is a national normed.

# TANGO LION

The Learning Inventory of Need (LION) in English and Spanish (LEON) is a comprehensive, adaptive math assessment for students grades KG – 8th (Spanish K-5).

A web-based assessment giving students tasks based on grade-level readiness skills and their corresponding pre-skills. Teachers learn valuable information regarding students' proficiency in math concepts and their progress throughout the year.

IXL Learning is a personalized online platform offering K-12 screening and practice in math, language arts, science, and social studies. We started using IXL as our comprehensive, adaptive math and reading assessment for students grades 6 – Alg 1 (Math) and 6-10 (RLA).

In addition to being a web-based adaptive assessment, IXL also provides students with targeted practice and skill recommendations to fill knowledge gaps and helps teachers monitor progress and make informed instructional decisions with formative data.

# BENCHMARK ASSESSMENTS

Benchmark Assessments are typically previously released state assessments or questions pulled from the released test bank.

The assessments mirror the blueprint and length of state assessments. This provides the district and campus with student performance data on a comprehensive exam.

# UNIT TESTS

Unit tests are given immediately following instruction of new content. They are district created so that all students take the same assessment.

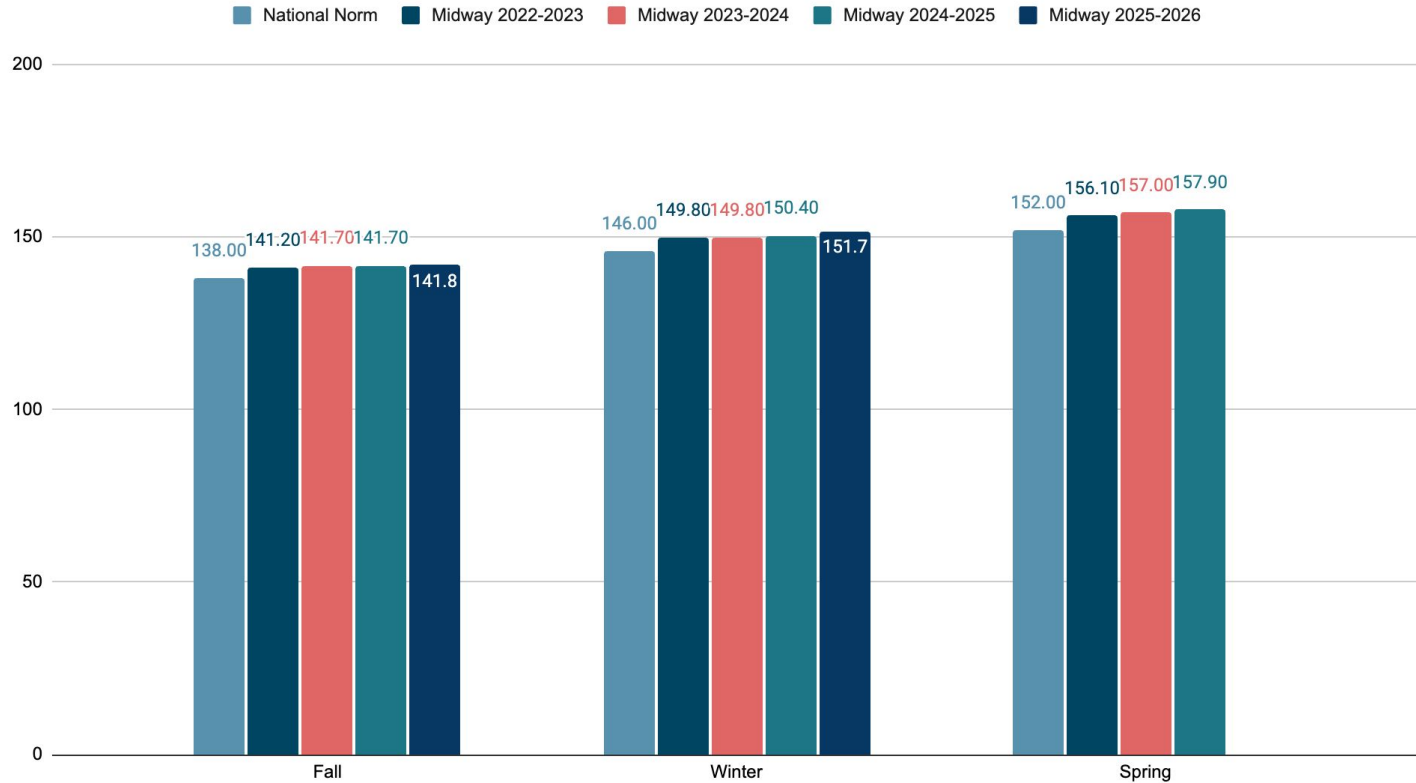
The Teaching & Learning department has worked to align the rigor of these assessments with the state expectations in both content and cognitive expectations.

**READING**



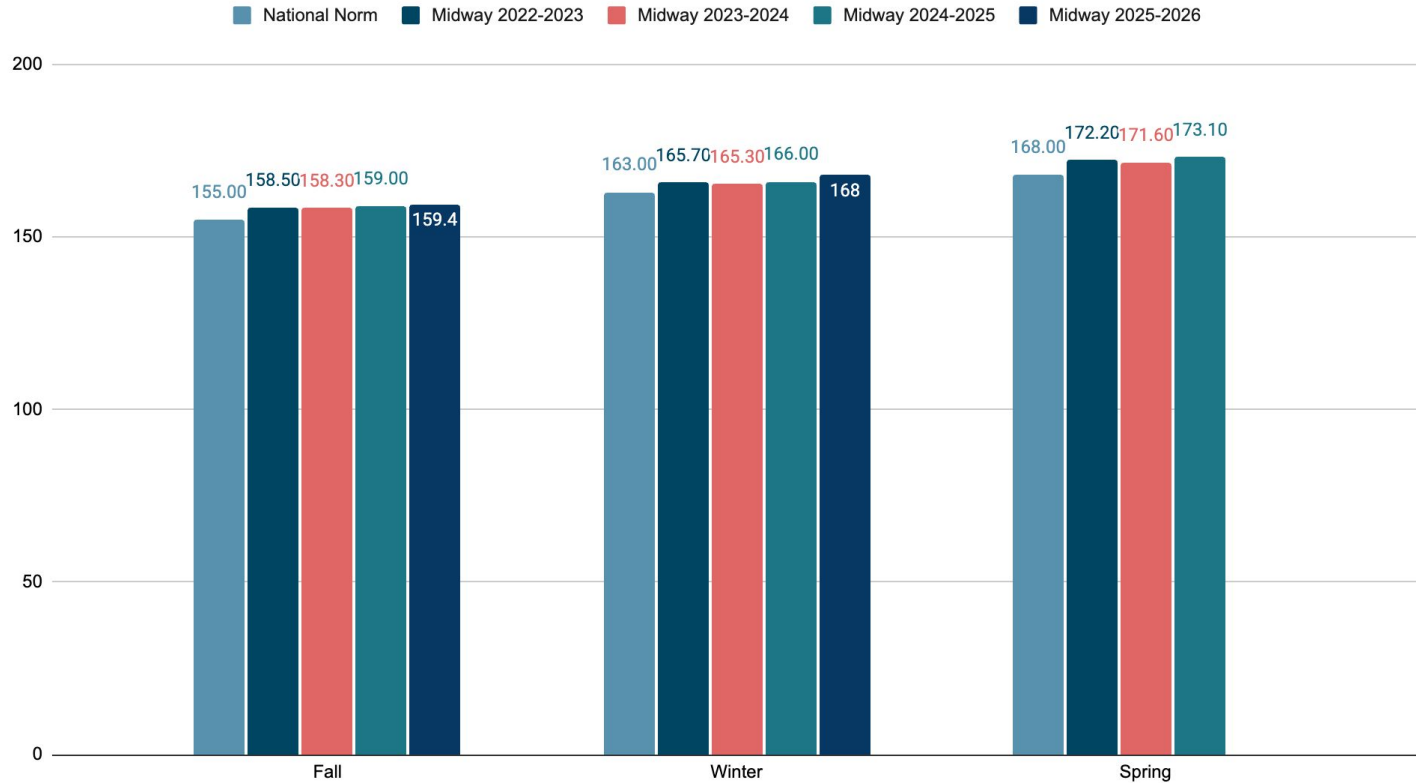
# NWEA MAP

## KINDERGARTEN MAP READING RiT Score



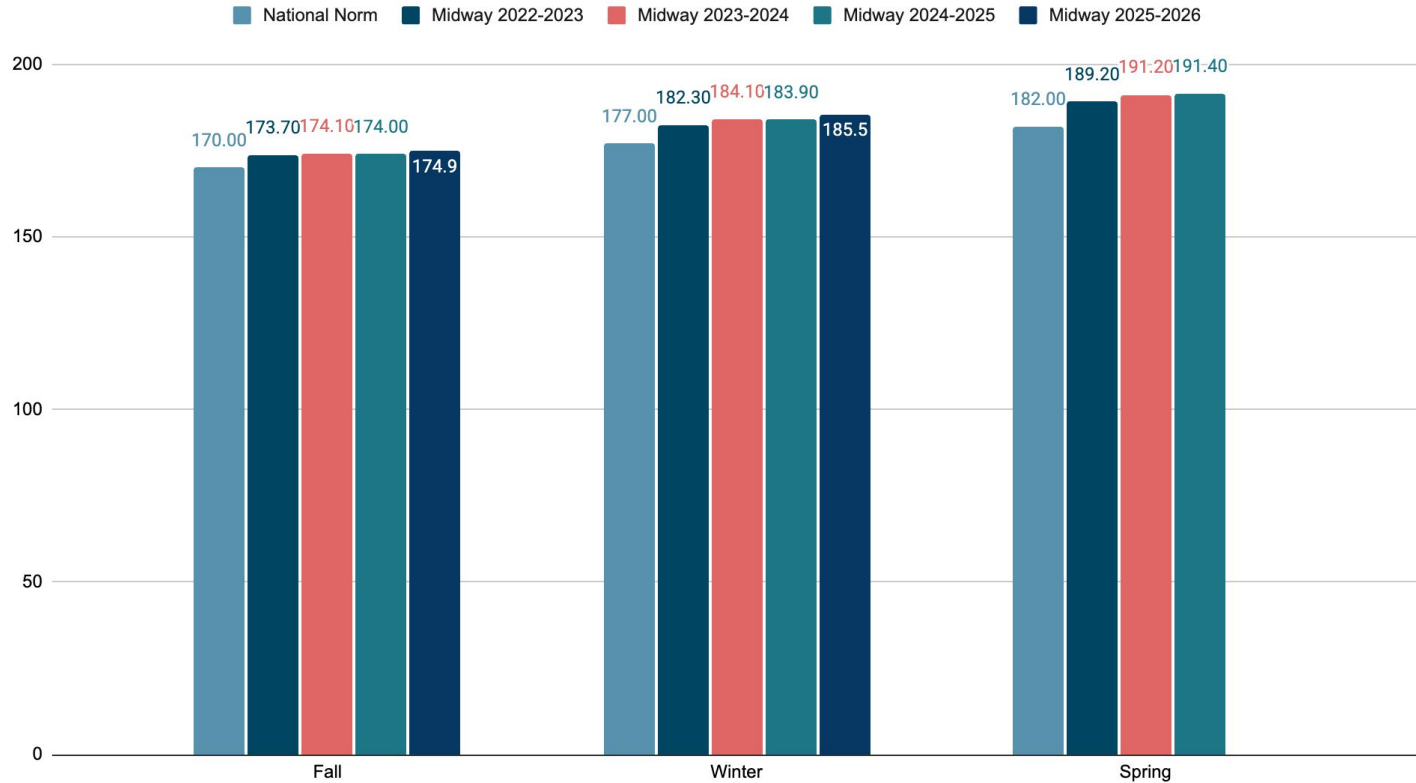
# NWEA MAP

## 1ST GRADE MAP READING RiT SCORE



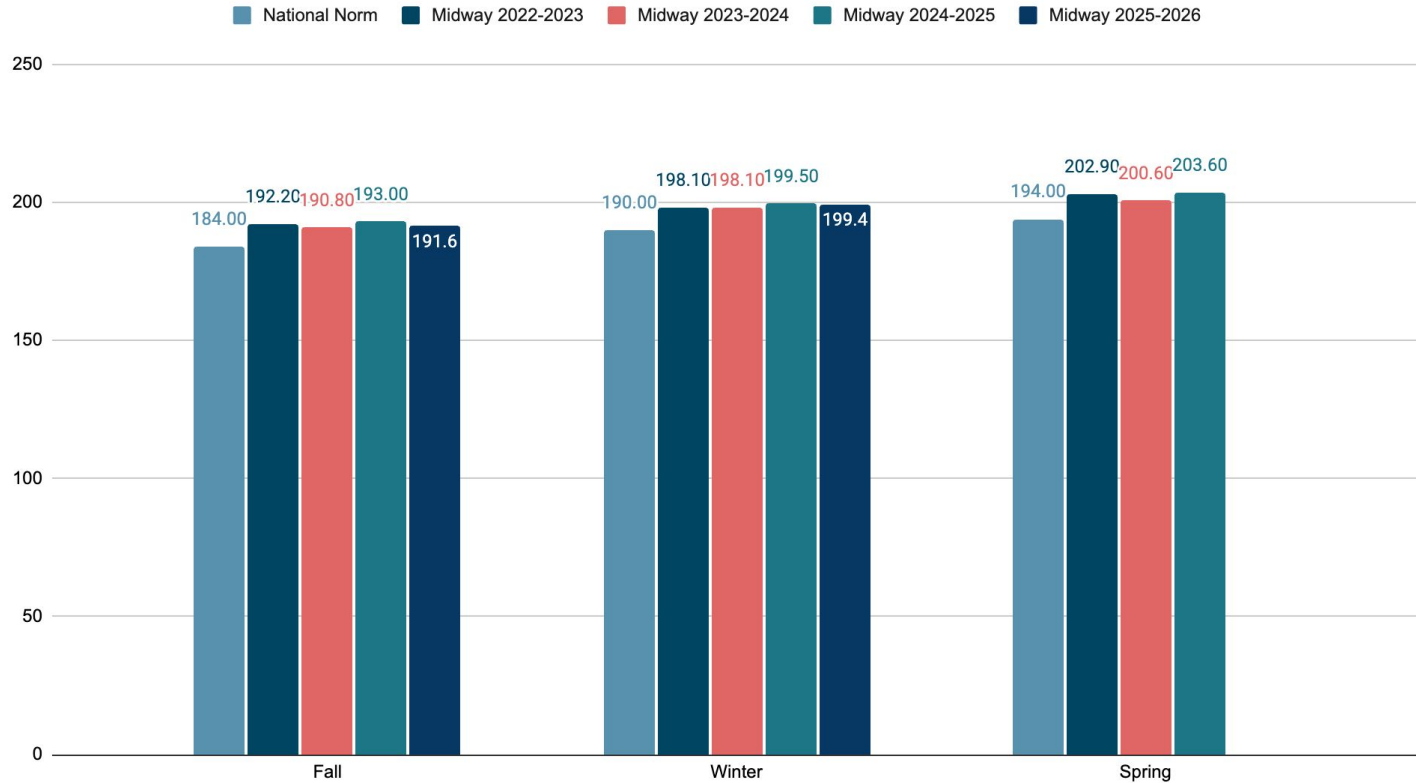
# NWEA MAP

## 2nd GRADE MAP READING RiT SCORE



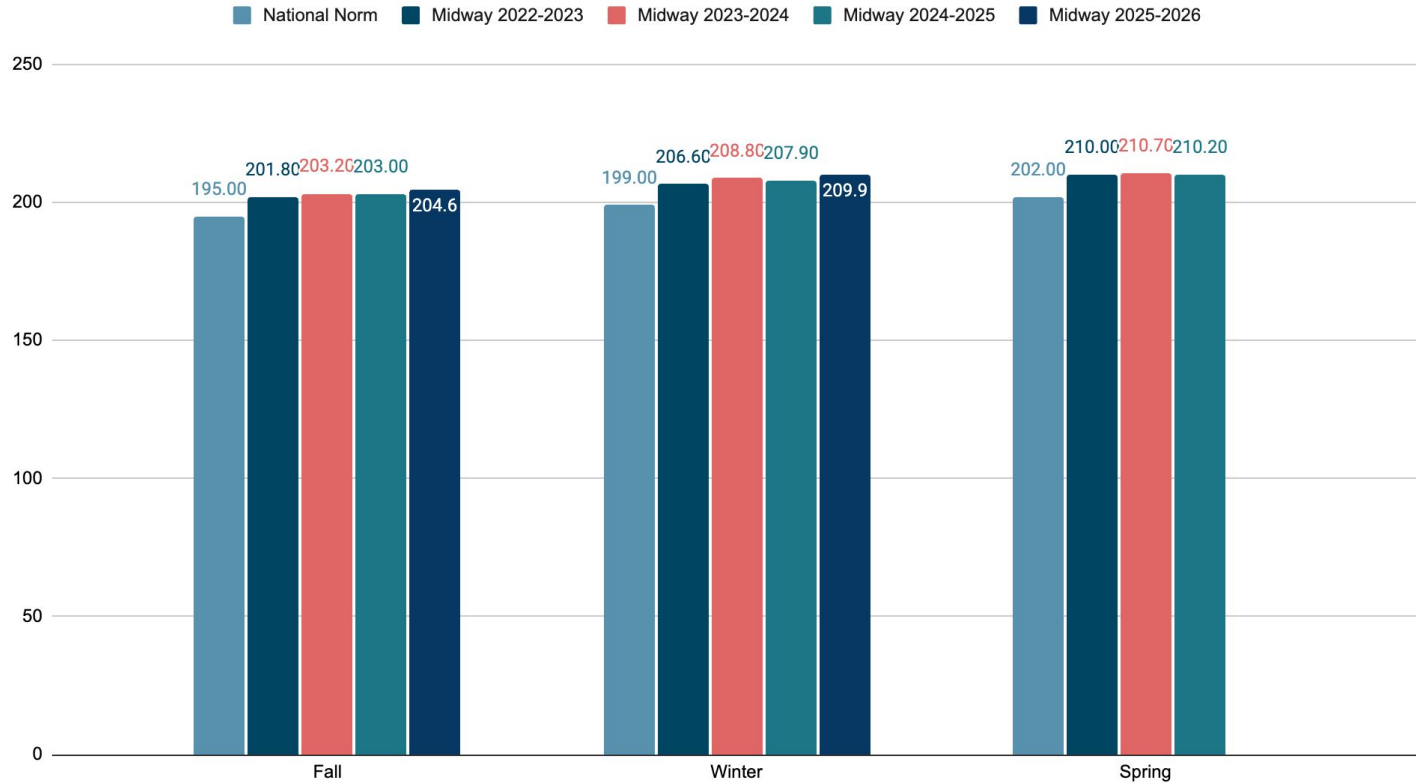
# NWEA MAP

## 3rd GRADE MAP READING RiT SCORE



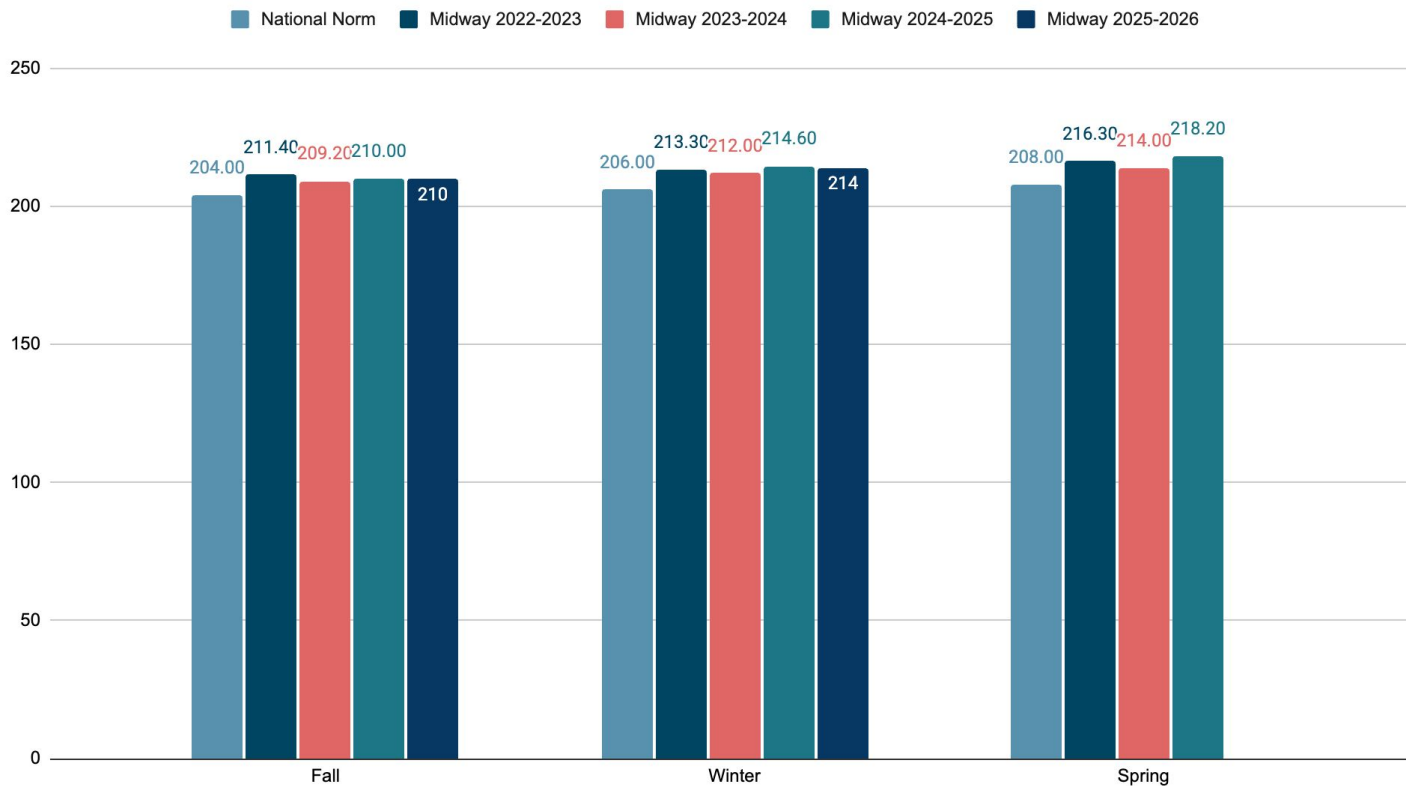
# NWEA MAP

## 4TH GRADE MAP READING RIT SCORE

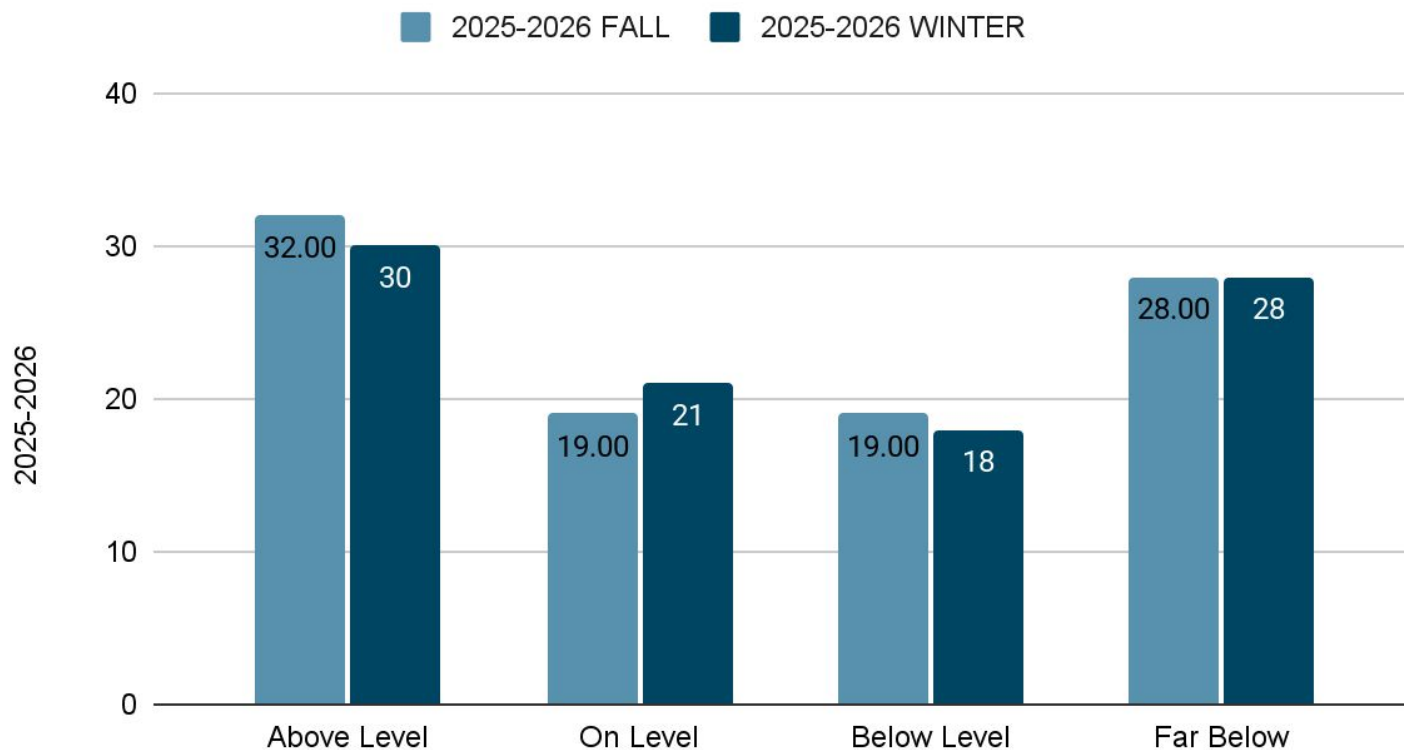


# NWEA MAP

## 5TH GRADE MAP READING RiT SCORE



## 6TH GRADE RLA IXL



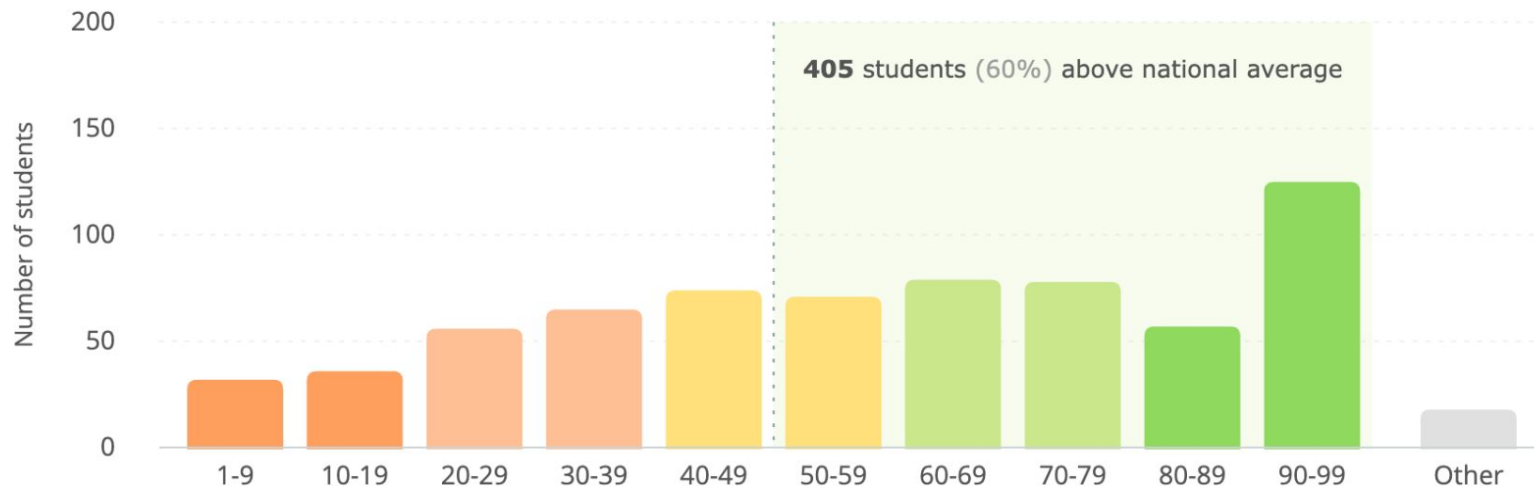
# IXL MISD National Norm Grade 6

25-26 MOY RLA Benchmark (Dec 15, 2025 - Feb 2, 2026)

ELA | Grades 6 - 12 | 11 schools

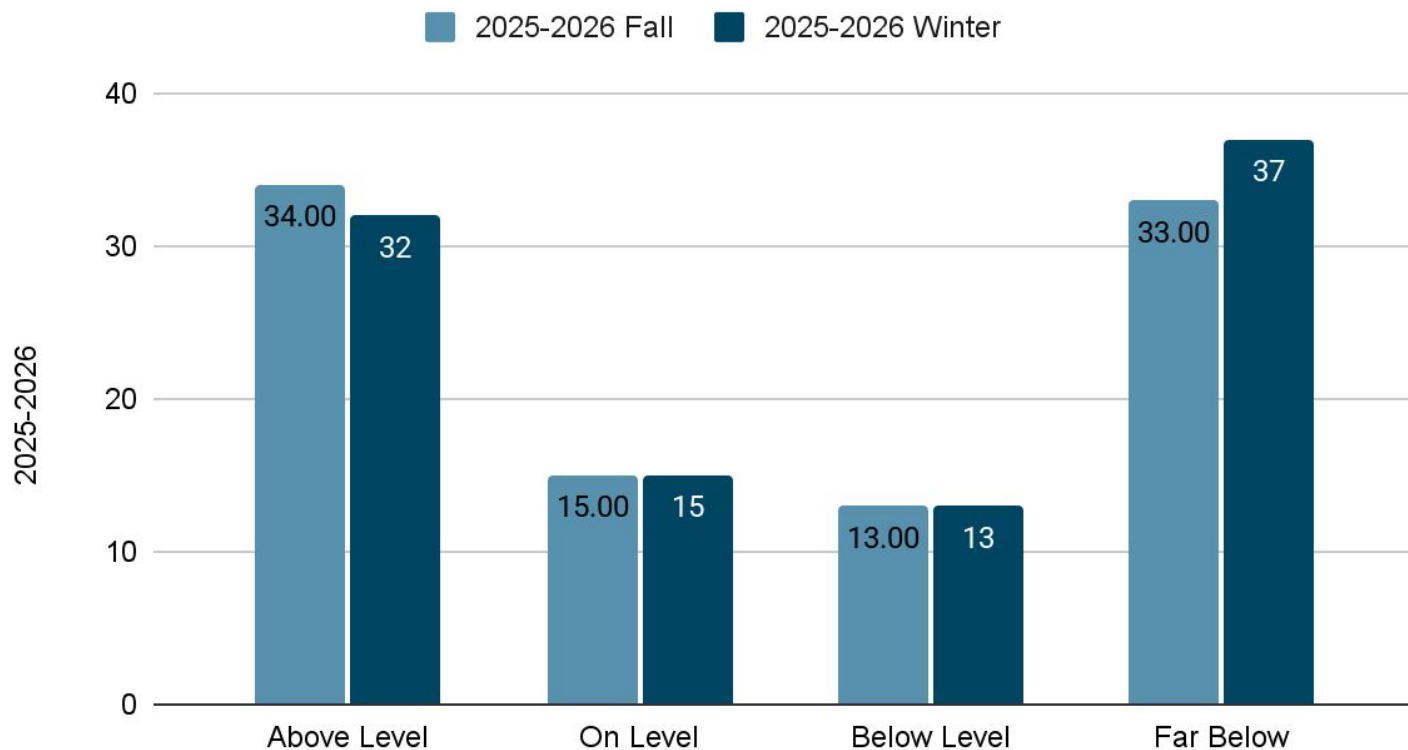
Levels ☒ National norms ?

## Percentile ranks





## 7TH GRADE RLA IXL



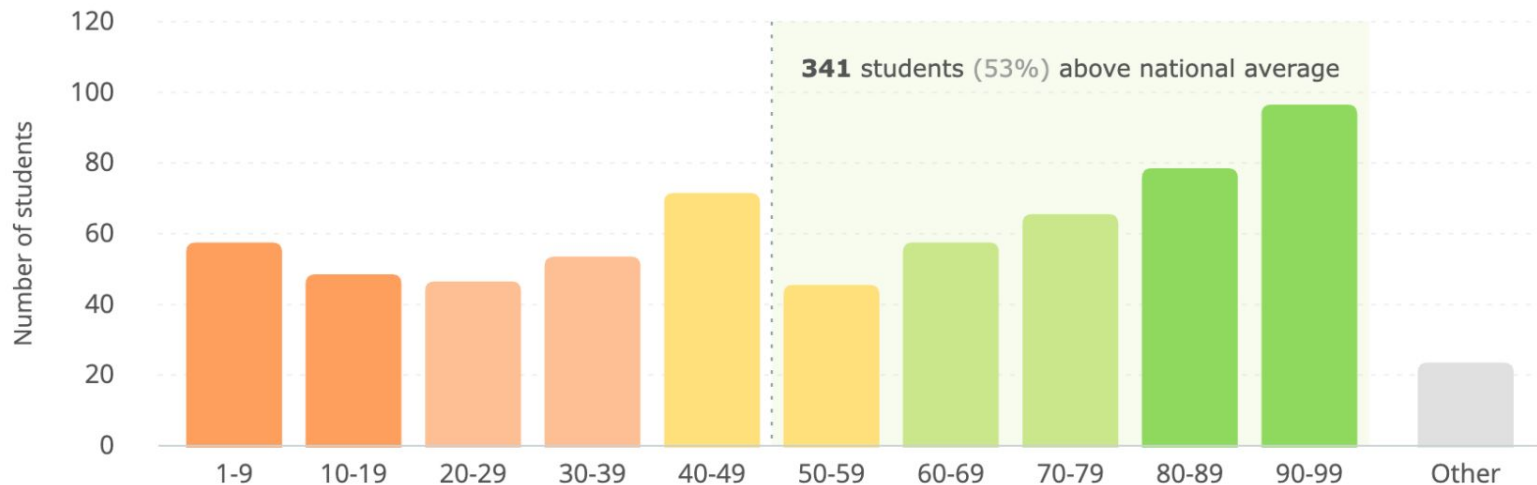
# IXL MISD National Norm Grade 7

25-26 MOY RLA Benchmark (Dec 15, 2025 - Feb 2, 2026)

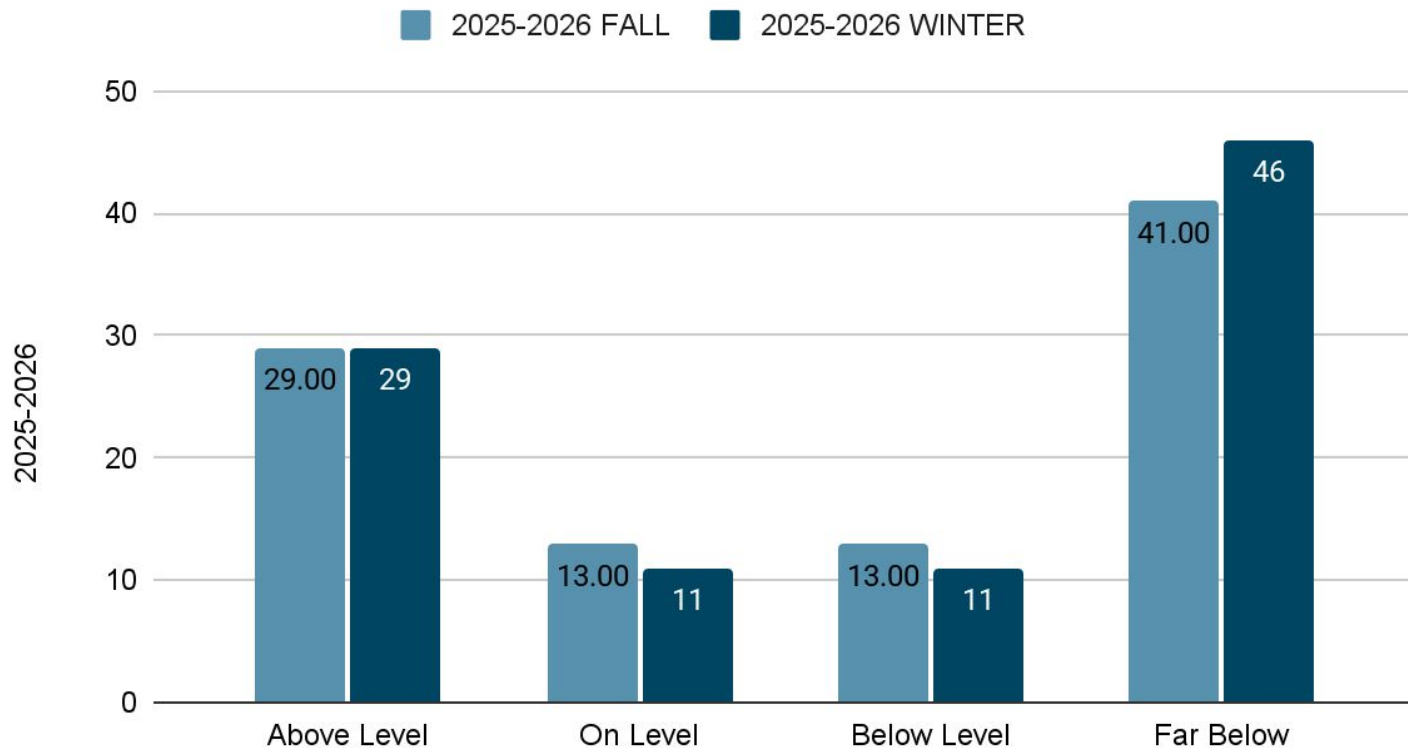
ELA | Grades 6 - 12 | 11 schools

Levels ☒ National norms 

## Percentile ranks



## 8TH GRADE RLA IXL



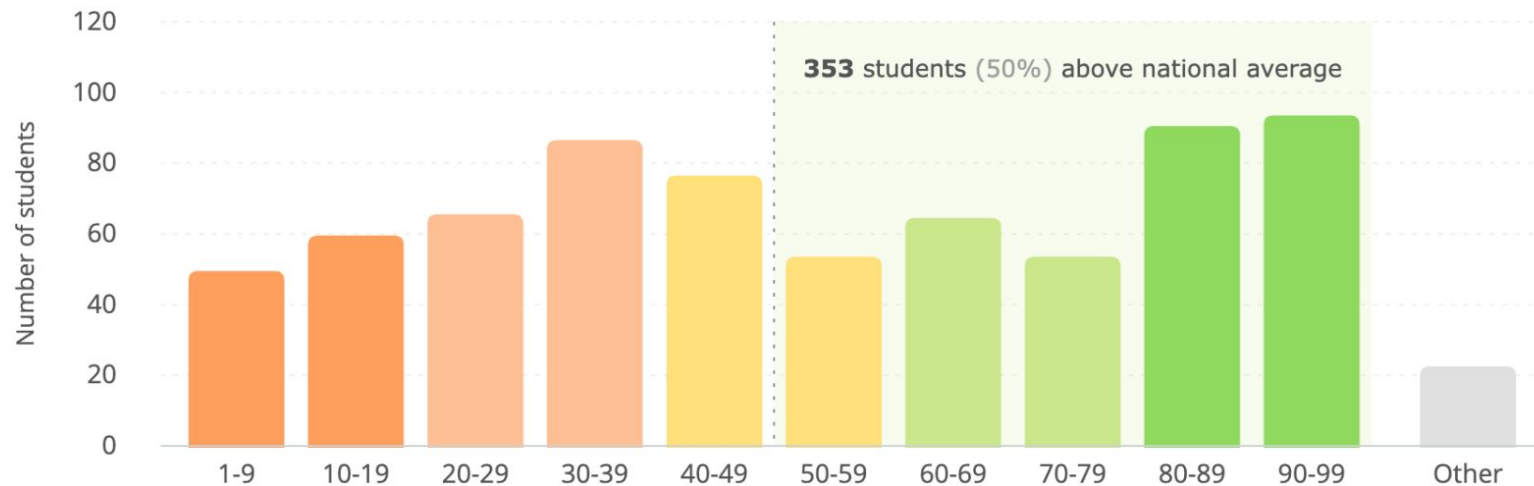
# IXL MISD National Norm Grade 8

25-26 MOY RLA Benchmark (Dec 15, 2025 - Feb 2, 2026)

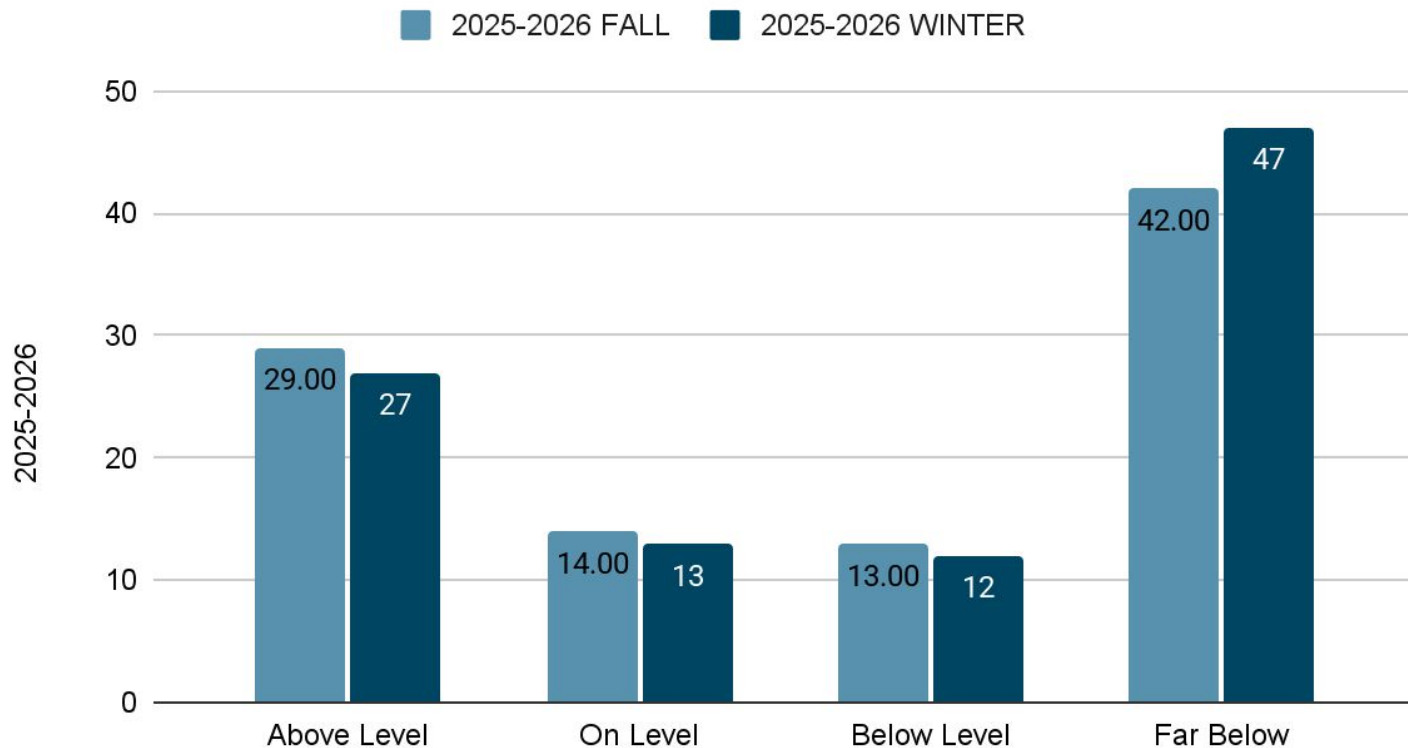
ELA | Grades 6 - 12 | 11 schools

Levels ☒ National norms 

## Percentile ranks



## 9TH GRADE RLA IXL



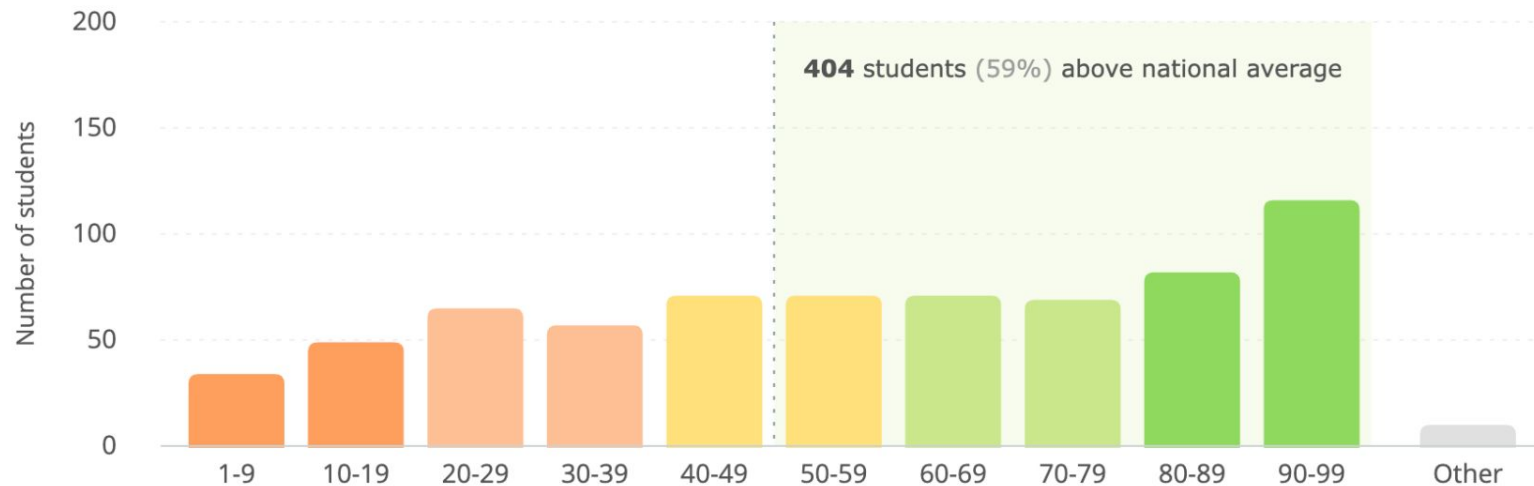
# IXL MISD National Norm Grade 9

25-26 MOY RLA Benchmark (Dec 15, 2025 - Feb 2, 2026)

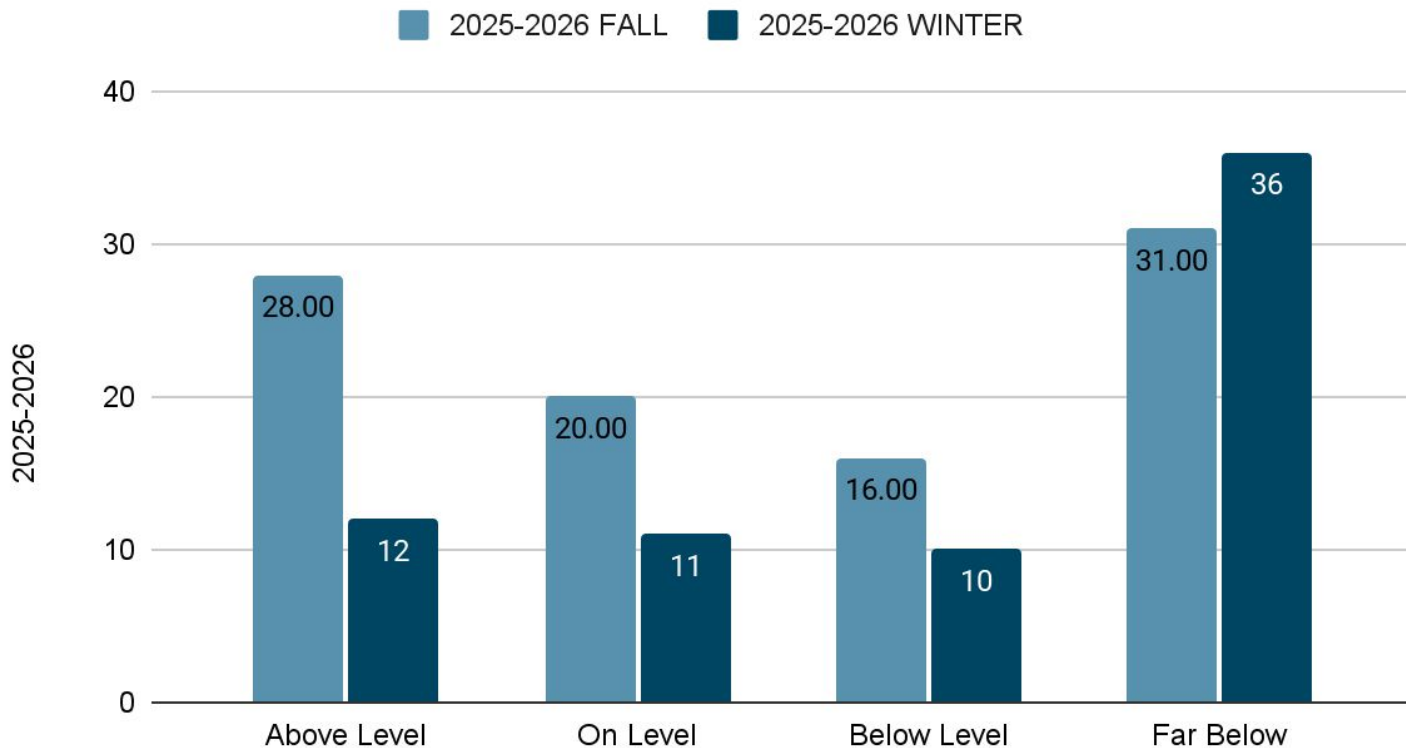
ELA | Grades 6 - 12 | 11 schools

Levels ☒ National norms 

## Percentile ranks



## 10TH GRADE RLA IXL



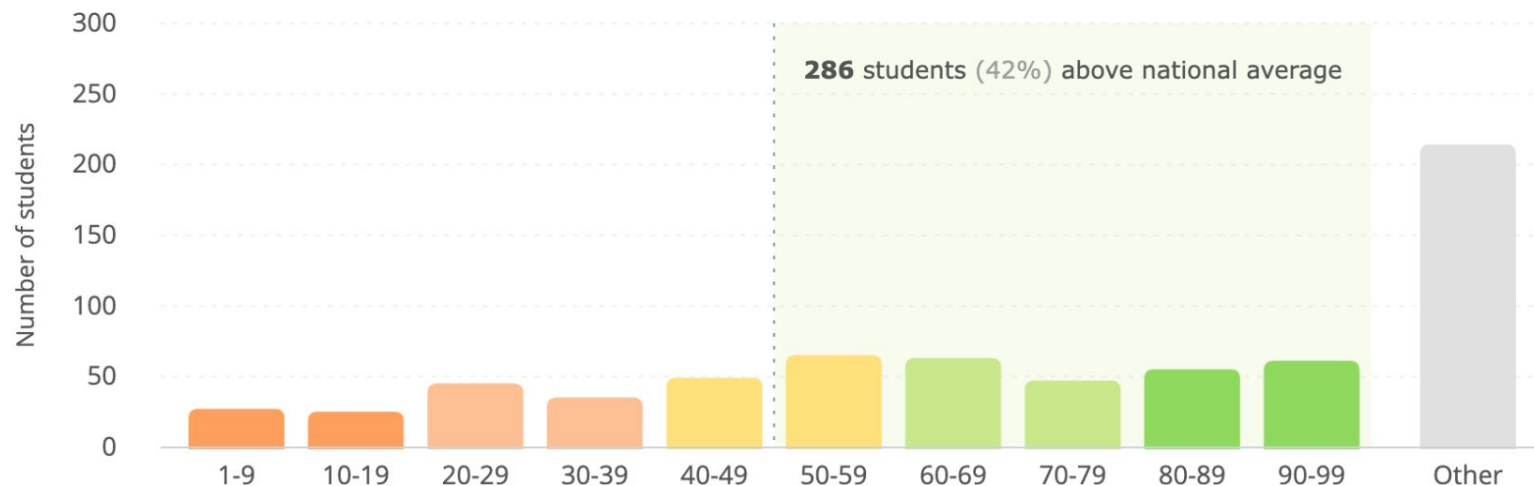
# IXL MISD National Norm Grade 10

25-26 MOY RLA Benchmark (Dec 15, 2025 - Feb 2, 2026)

Levels ☒ National norms 

ELA | Grades 6 - 12 | 11 schools

## Percentile ranks

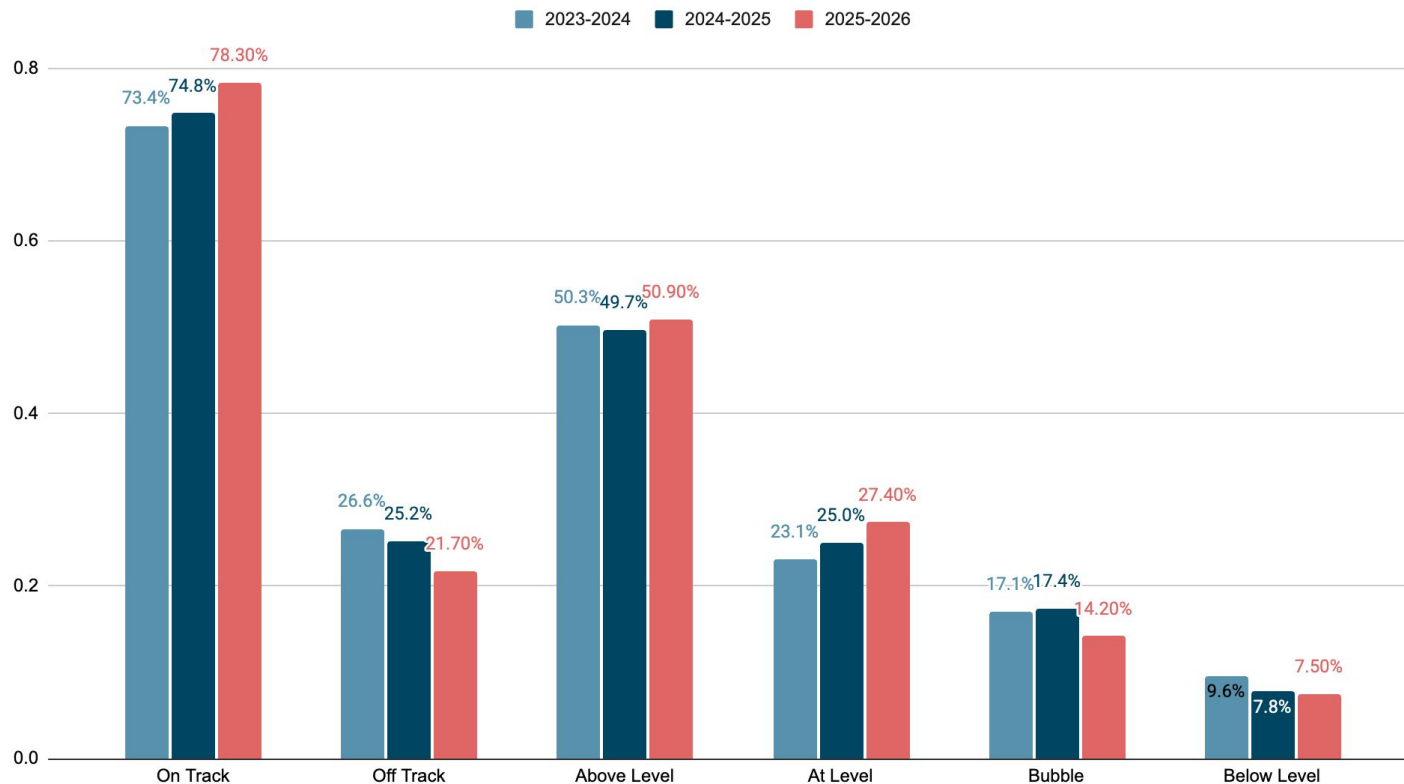




**MATH**

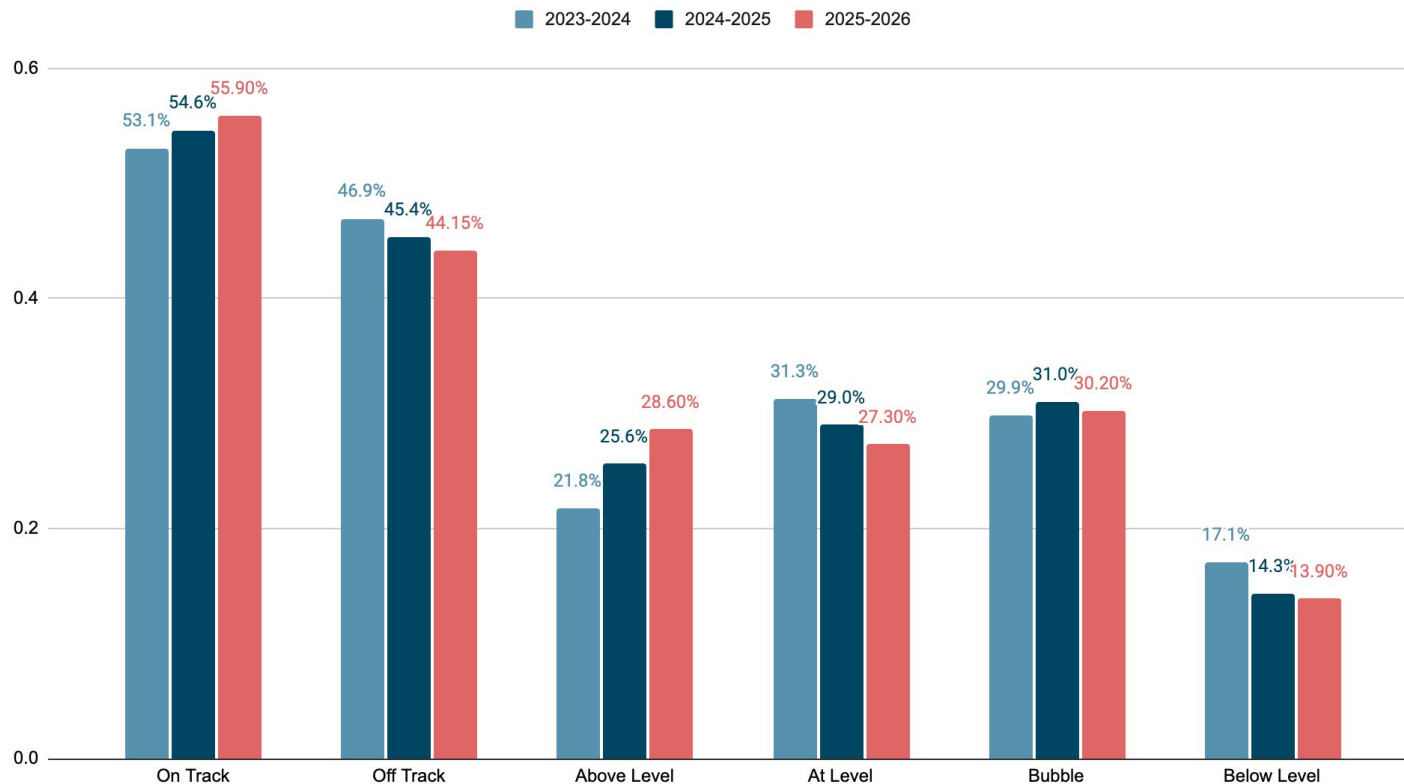
# TANGO LION

## KINDERGARTEN TANGO-LION MOY



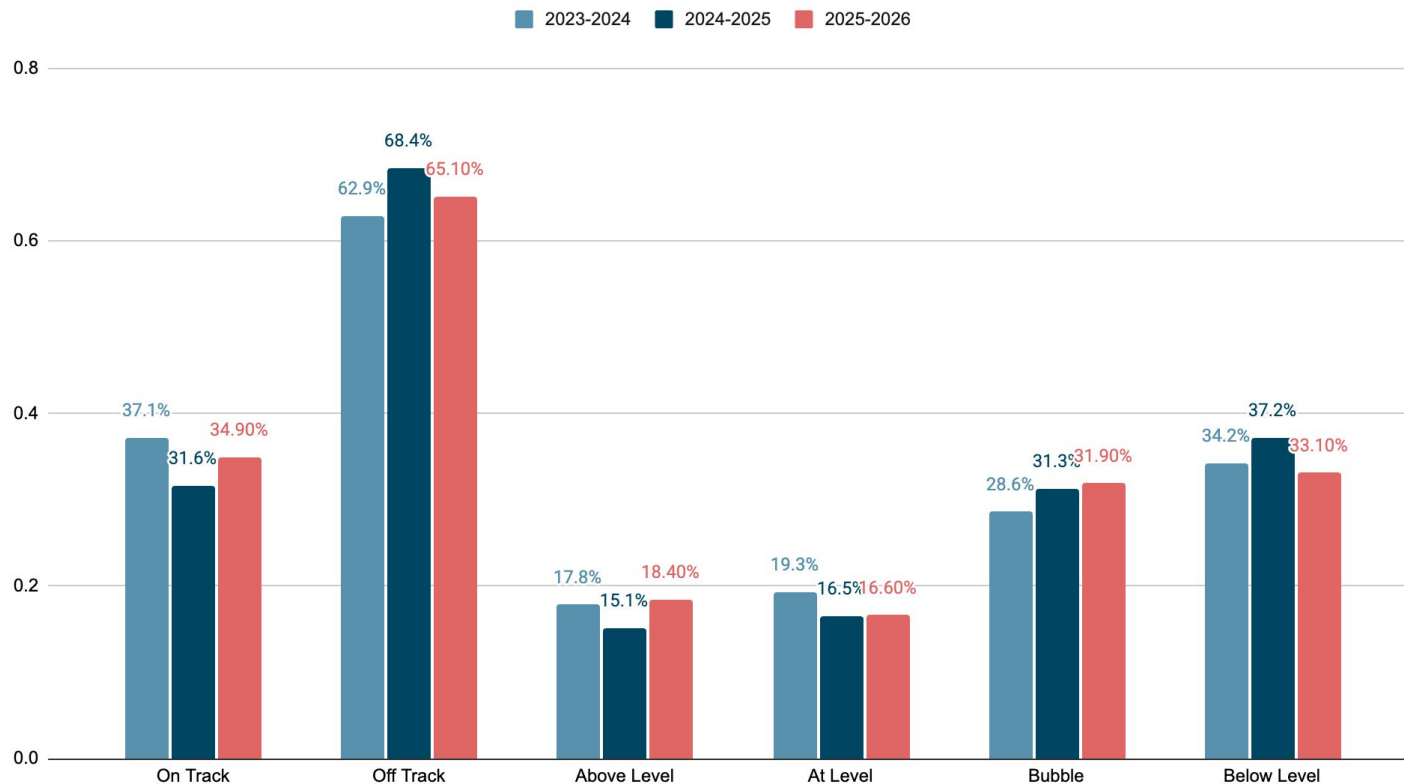
# TANGO LION

## 1ST GRADE TANGO LION MOY



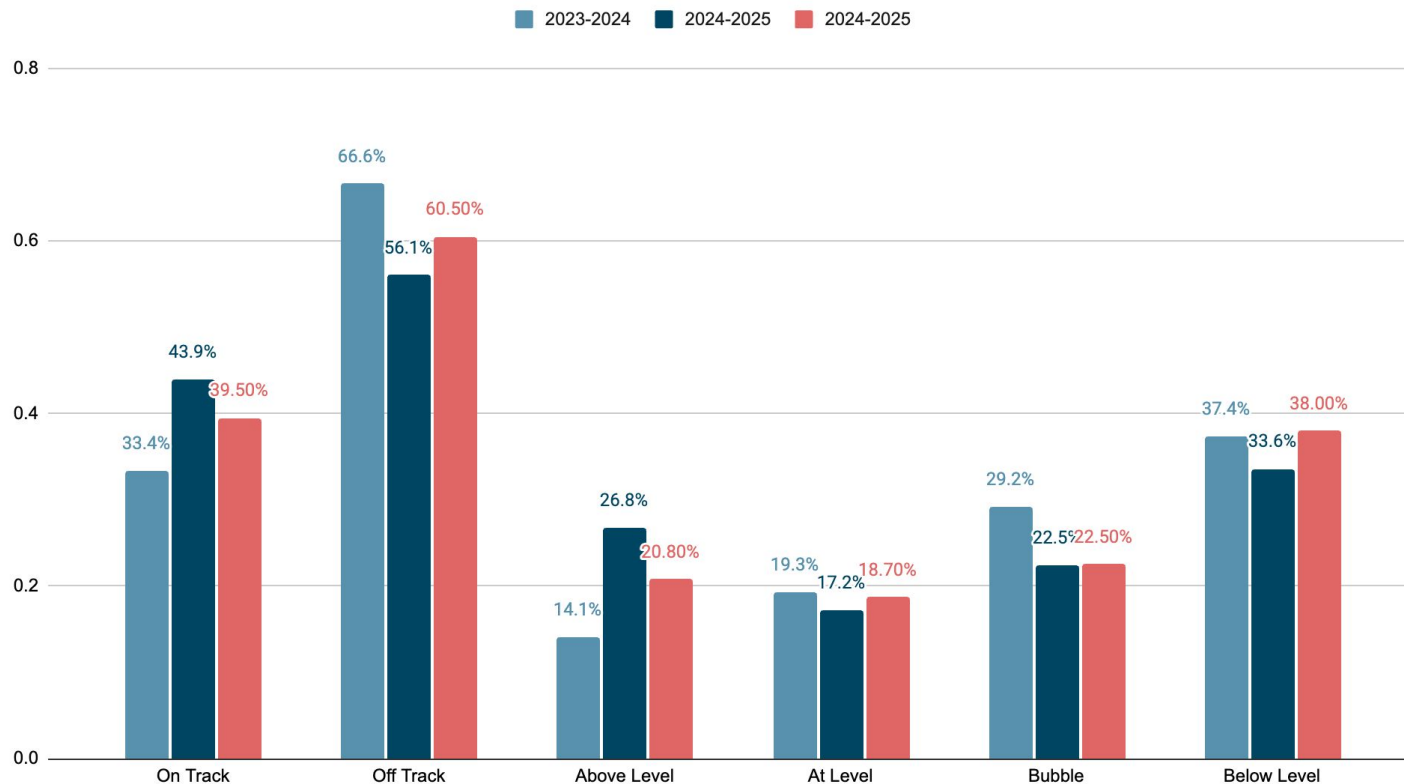
# TANGO LION

## 2ND GRADE TANGO-LION MOY



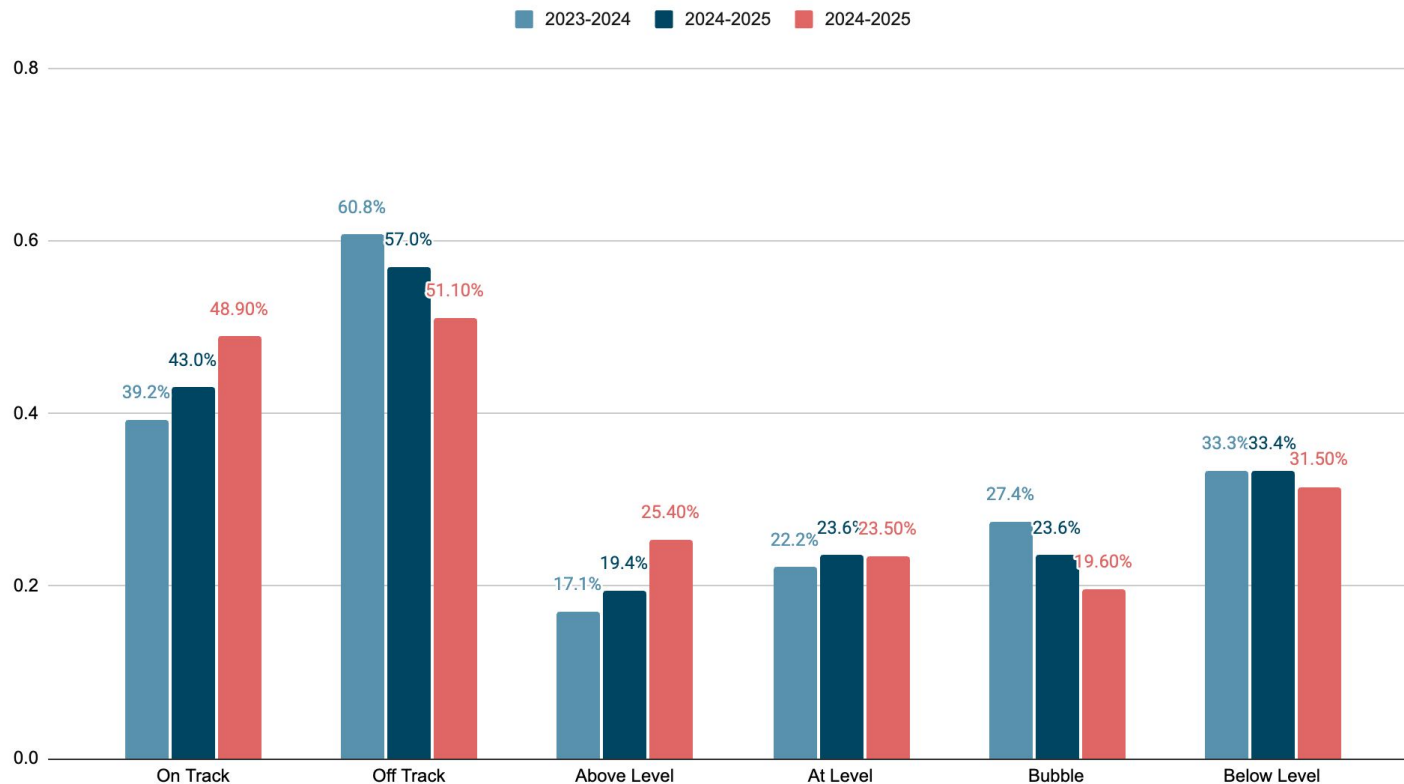
# TANGO LION

## 3RD GRADE TANGO LION MOY



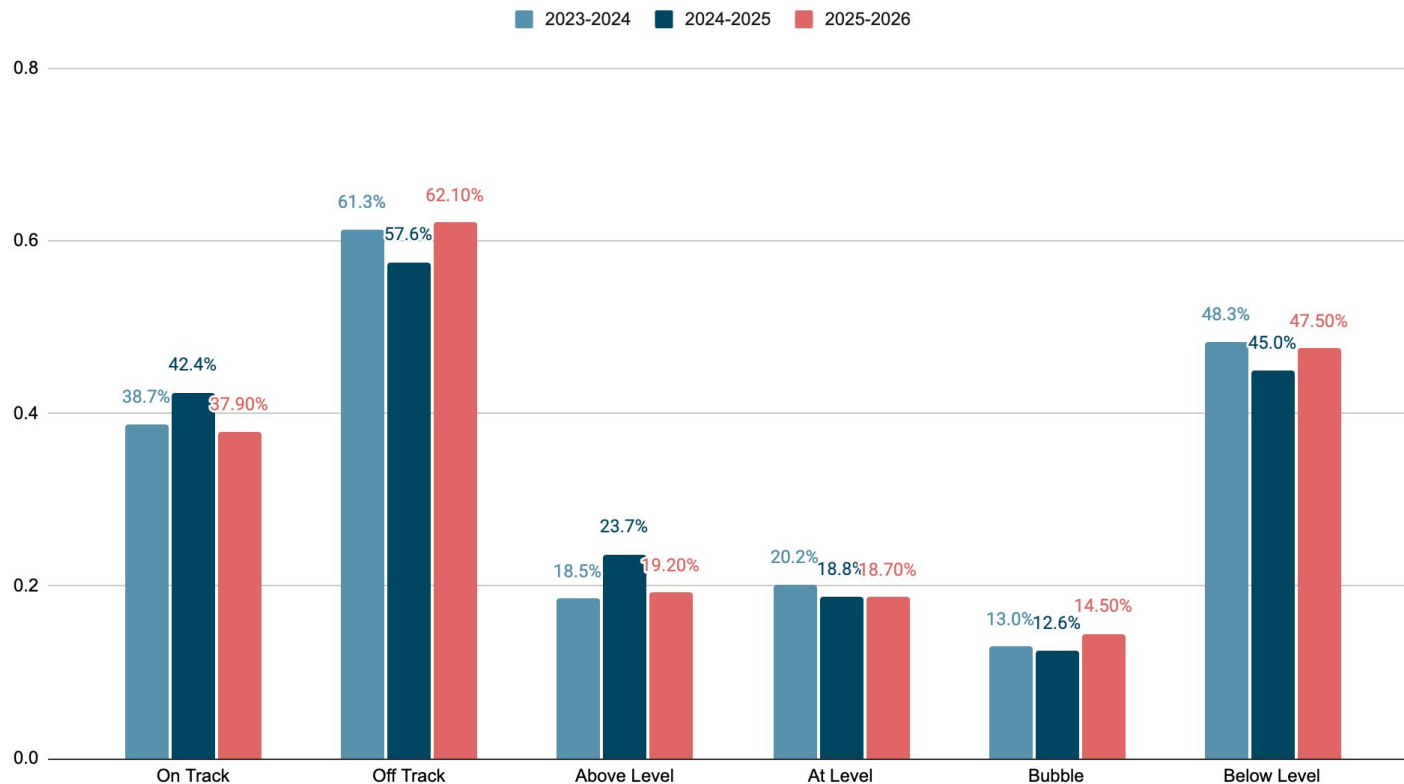
# TANGO LION

## 4TH GRADE TANGO LION MOY

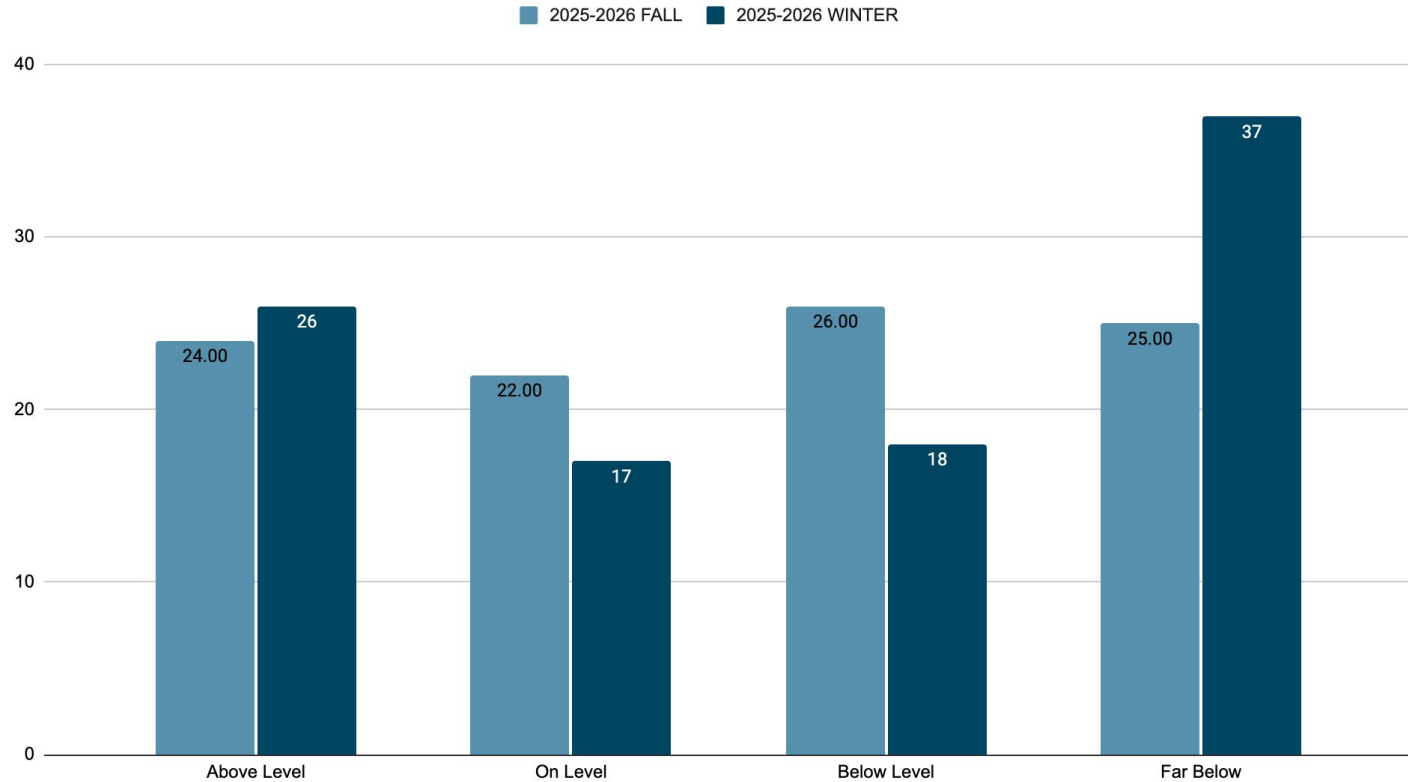


# TANGO LION

## 5TH GRADE TANGO LION MOY



## 6TH GRADE MATH IXL



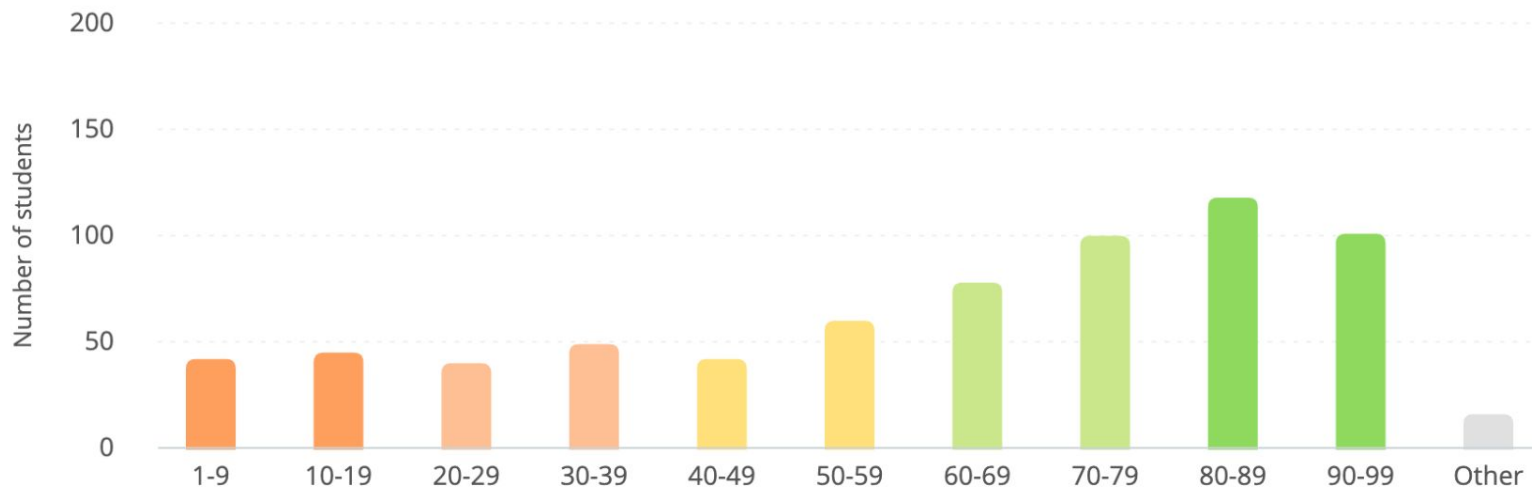


# IXL MISD National Norm Grade 6

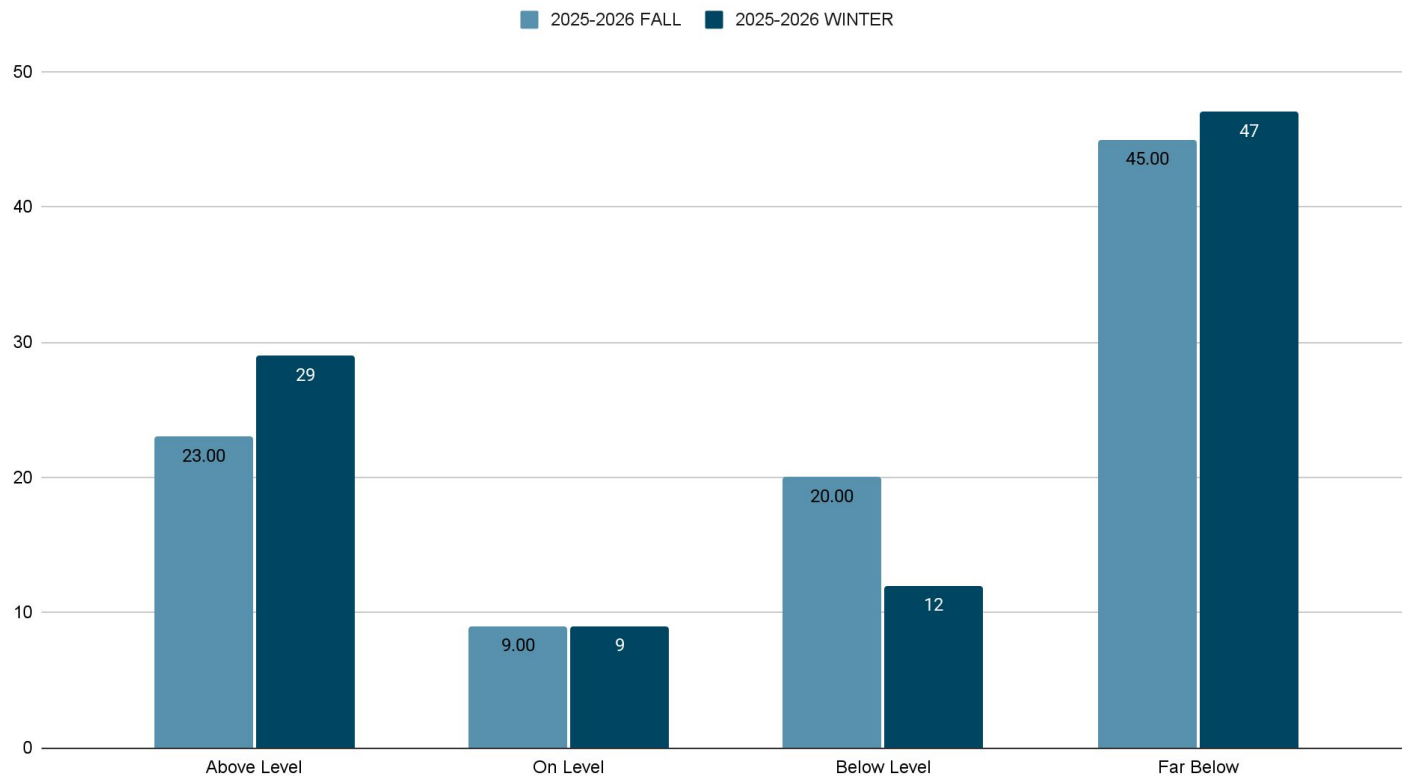
25-26 MOY Math Benchmark (Dec 11, 2025 - Jan 21, 2026)

Levels ☒ National norms [?](#)

## Overall level national percentile ranks



## 7TH GRADE MATH IXL

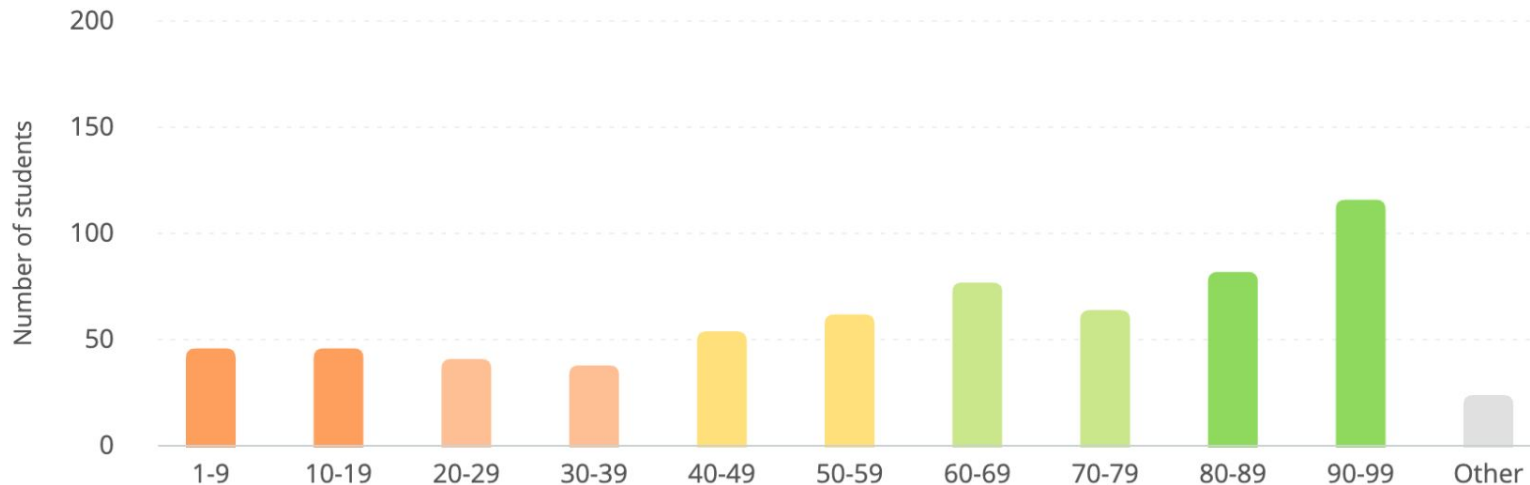


# IXL MISD National Norm Grade 7

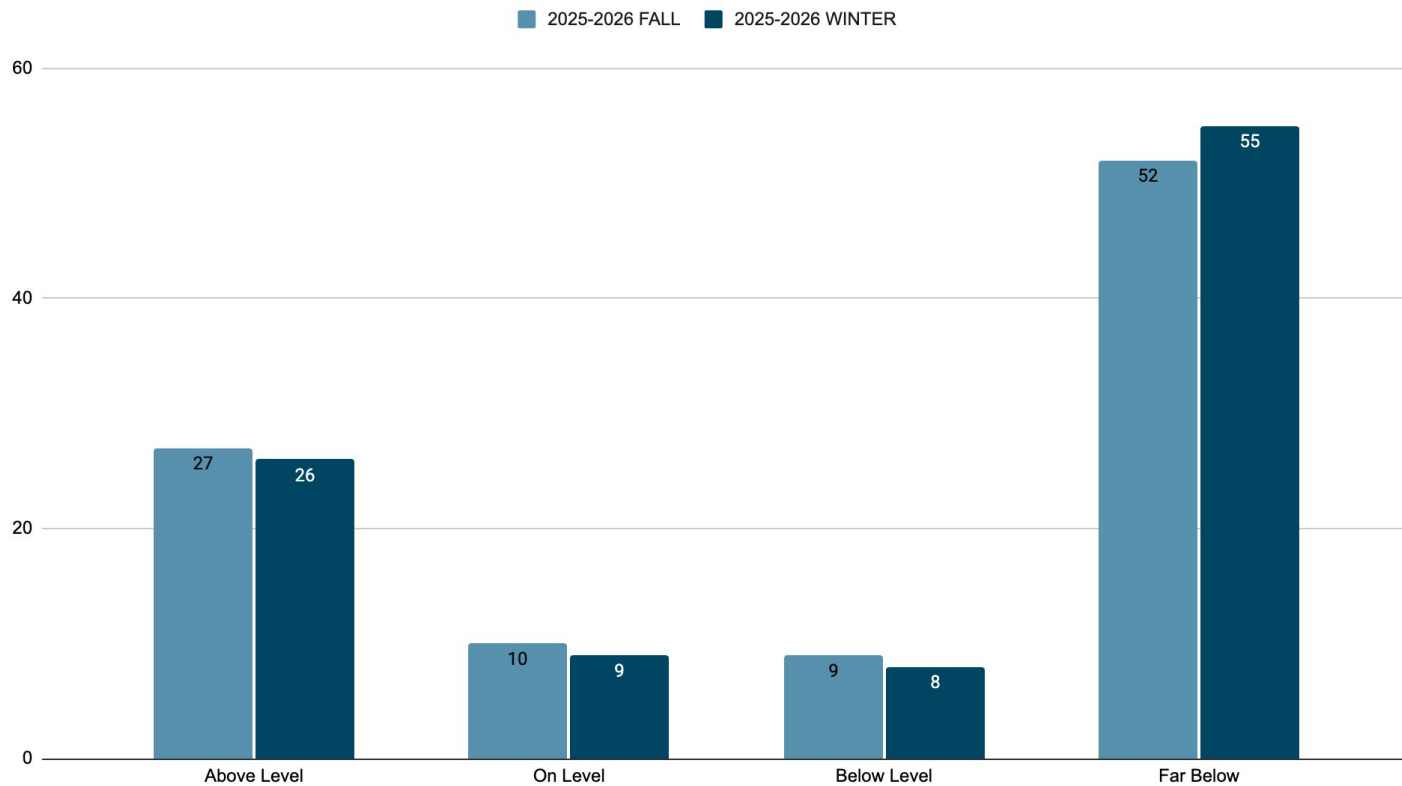
25-26 MOY Math Benchmark (Dec 11, 2025 - Jan 21, 2026)

Levels ☒ National norms [?](#)

Overall level national percentile ranks



## 8TH GRADE MATH IXL

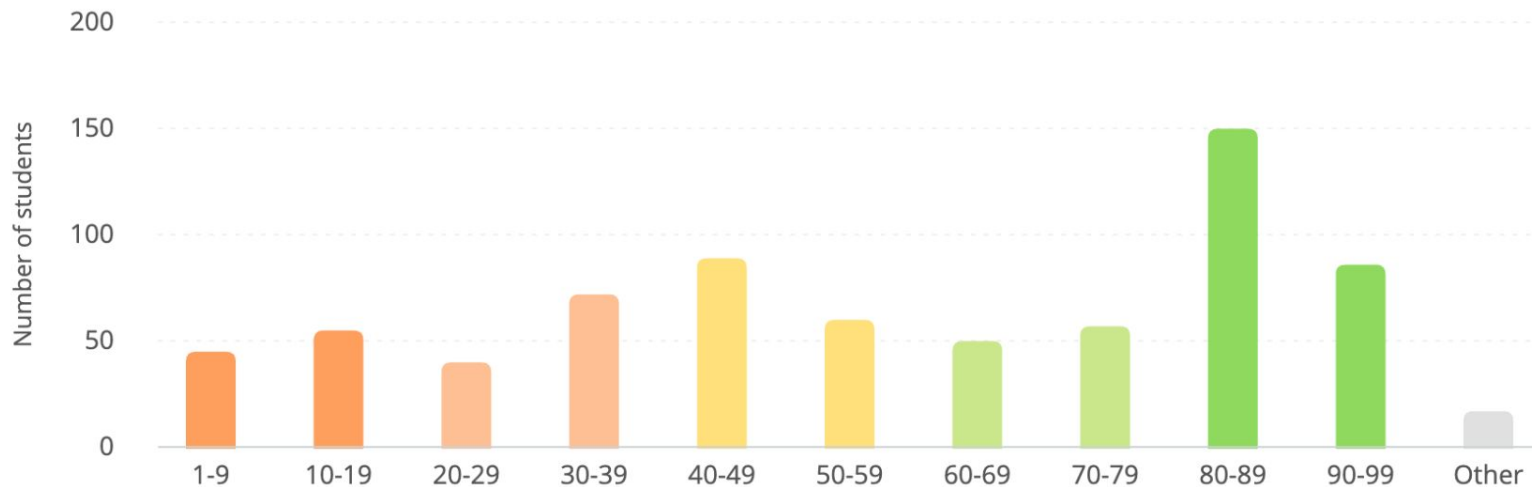


# IXL MISD National Norm Grade 8

25-26 MOY Math Benchmark (Dec 11, 2025 - Jan 21, 2026)

Levels ☒ National norms ?

Overall level national percentile ranks



# UPCOMING BENCHMARKS

# BENCHMARK DATES

<u>Elementary</u>	<u>Middle School</u>	<u>High School</u>
<ul style="list-style-type: none"><li>• <i>Feb 3 - RLA Field Test</i></li><li>• Feb 10 - RLA Benchmark</li><li>• Feb 25 - Science Benchmark</li><li>• Mar 4 - Math Benchmark</li></ul>	<ul style="list-style-type: none"><li>• <i>Feb 4 - RLA Field Test</i></li><li>• Feb 10 - RLA Benchmark</li><li>• March 2 and 3 - Social Studies Benchmark in class</li><li>• March 2 and 3 - Science Benchmark in class</li><li>• March 18 - Math Benchmark</li></ul>	<ul style="list-style-type: none"><li>• <i>Feb 4 - RLA Field Test-Eng I</i></li><li>• Feb 5 - Eng II Benchmark</li><li>• Feb 11 - Eng I Benchmark</li><li>• Mar 17 - Alg I Benchmark</li><li>• Mar 18-19 (in class) - Bio Benchmark</li><li>• Mar 19-20 (in class) - USH Benchmark</li><li>• Mar 20-Dual Credit - USH Benchmark</li></ul>

# DATA-DRIVEN DECISIONS



# Focus Areas

- February 13th District-Wide Data Professional Learning Day
- Continuous Disaggregation of Student Performance Data
  - Specific Content Objectives and Cognitive Levels
  - Analyzing Unit Test Performance
  - Scoring ECRs from Benchmarks
- Teacher plan for lesson reteach and intervention
- Ongoing MTSS meetings target specific student growth needs
- T & L supports Admin and Teachers with identified content, resource, and instructional strategy needs

# Questions?