



FOUNDERS CLASSICAL ACADEMY

Online Elementary

Table of Contents



- ❧ Purpose of charter
- ❧ Mission statement
- ❧ Letter grade
- ❧ SMART goals
- ❧ Achievement of goals
- ❧ Supporting Data
- ❧ Innovations
- ❧ Adherence to Mission Statement
- ❧ Comparison to other local charters
- ❧ Plan for improvement

Our Purpose

- 1) To provide students across the state with a high quality college preparatory virtual education that includes best digital learning practices and adequate wraparound support on their journey to high school graduation and further higher education.
- 2) To provide flexibility to students and families in their pursuit of a college preparatory education.
- 3) To increase the impact of Founders Classical Academies across Arkansas through an innovative high quality virtual education experience.



Our Pillars



Knowledge

We believe that the pursuit of knowledge is never ending and we set the foundation for students to be lifelong learners.



Virtue

We believe knowledge alone does not make a good citizen. The shaping of a student's heart is more important than the shaping of their mind.

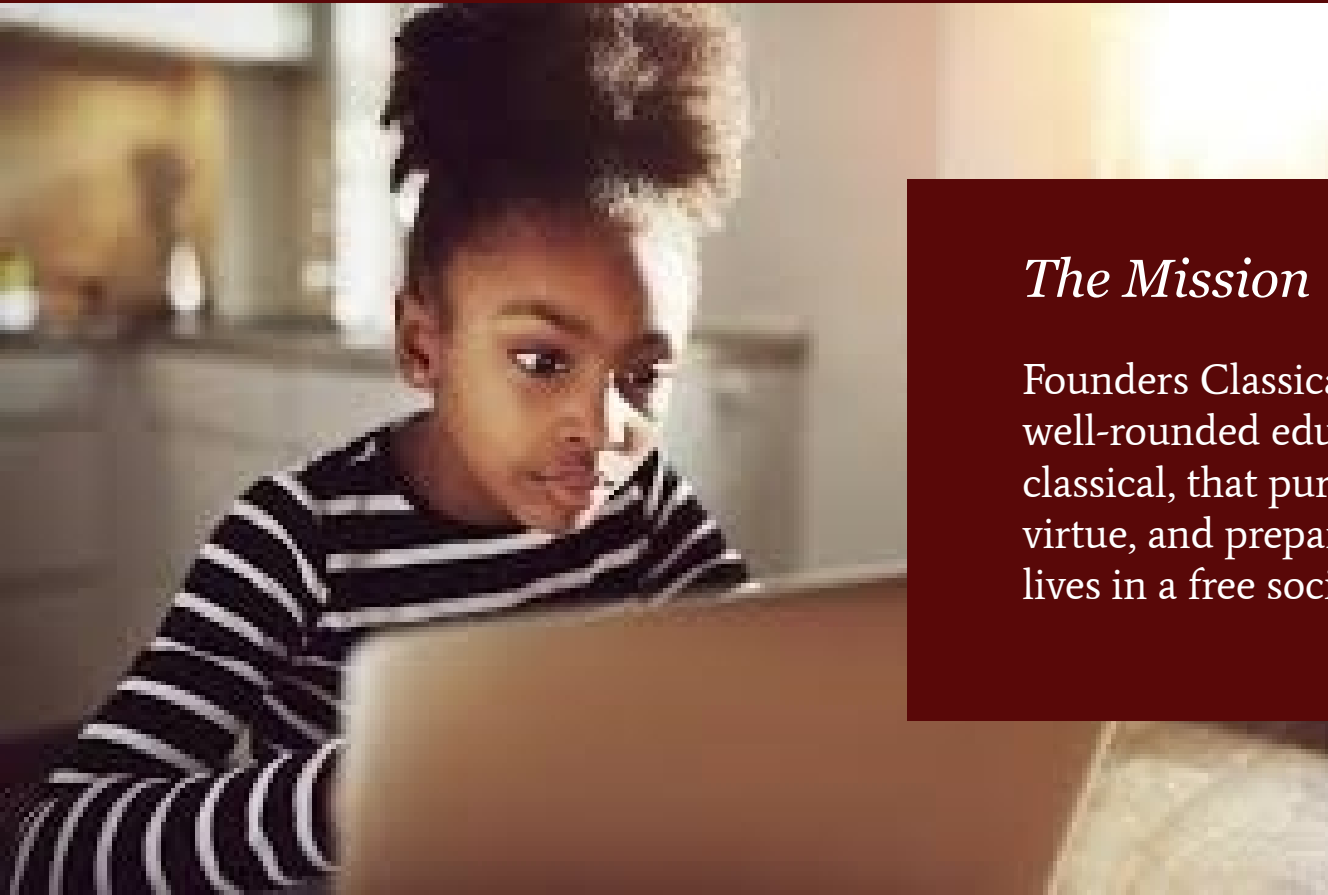


Liberty

We believe that liberty is necessary for citizens to live and participate in a free and just republic.

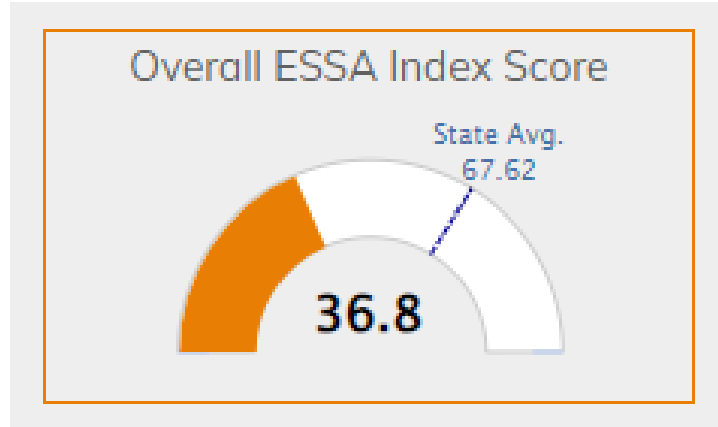


Our mission is to provide **hope**
to students through educational options
that promote a free society and
cultivate moral and academic excellence.



The Mission

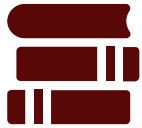
Founders Classical Academy seeks to provide a well-rounded education that is distinctively classical, that pursues knowledge, promotes virtue, and prepares students for prosperous lives in a free society.



F

Founders Classical Academy Elementary Online earned an F rating from the Department of Elementary and Secondary Education for performance during the 22-23 school year.

OUR CHALLENGES



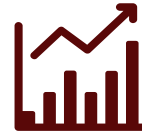
Literacy

20% of elementary students scored Ready or Exceeds in Reading



Attendance

Score of 21.43 on the Student Engagement SQSS Indicator



Student Academic Achievement and Growth

Score of 5 for the Weighted Achievement indicator; placing us in the Lower Achievement / Lower Growth quadrant

CHALLENGES CONTRIBUTING TO THE OVERALL SCORE

*Our first year as an elementary
school:*

- SY 22-23
- Grades 4-6
- 4 students total - low testing percentages
- F rating



SMART Goals

80%

Meet or exceed state average in overall literacy.

80% of students who attend two or more years will perform at or above the 75th percentile on a nationally normed assessment such as NWEA MAP.

- 75% of students demonstrated growth from Fall to Winter MAP
- 20% of students Ready or Exceeds on ACT Aspire in reading

80%

Meet or exceed state average in overall math.

80% of students who attend two or more years will perform at or above the 75th percentile on a nationally normed assessment such as NWEA MAP.

- 75% of students demonstrated growth from Fall to Winter MAP
- 0% of students Ready or Exceeds on ACT Aspire in Math

Meet or exceed state average in science.

Demonstrate measurable student success in science.

- 67% of students demonstrated growth from Fall to Winter MAP
- 33% of students Ready or Exceeds on ACT Aspire in Science

Student Counts for ACT Aspire

Student Counts				
	English	Reading	Science	Math
Grade 4				
Exceeding or Ready	2	1	1	0
Close or In Need of Support	0	1	0	2
Grade 5				
Exceeding or Ready	1	0	0	0
Close or In Need of Support	0	1	1	1
Grade 6				
Exceeding or Ready	1	0	0	0
Close or In Need of Support	1	2	1	1

Students who came to us from a traditional learning environment improved academically from their previous year's assessments.

INNOVATIONS

Classical Education in an Online Environment - We are the only school in the state offering a classical education to students online.

Student Engagement Opportunities

High Dosage Tutoring

Personalized Learning

- Learning Mentors assist students with time management, and course progress.
- Learning Facilitators are available for 1:1 tutoring opportunities when students need it and for the specific concepts they need to have reinforced
- Subject-area Knowledge Assessments and MAP data assist the instructional team to design personalized pathways for learning for each student

Scheduling Flexibility

Providing Emergent Technology - Dedicated tech support team to assist students with any issues with logging in or equipment needs.

To add engagement and a sense of community for students, clubs and enrichment activities are included in the regular schedule.



HAVE WE BEEN TRUE TO OUR MISSION STATEMENT?

Founders Classical Academy has a proven track record of providing a high-quality, classical education that emphasizes increased levels of content learning while installing qualities of scholarly perception and response to that content. This methodology is teacher directed. Educators are focused on teaching students to think for themselves, analyze and integrate learning as relevant to everyday life.

While we know we have room for improvement, particularly with our online environment, we are committed to continuing to be the only online classical education program in the state.



The Classical Difference



- A research-based phonics curriculum with proven results in early literacy acquisition
- A world-class math program focusing on acquiring mathematical thinking skills
- A comprehensive history and science curriculum providing a strong knowledge foundation for future reading and research
- An emphasis on critical thinking and inquiry
- A virtue-centered curriculum and instructional method that teaches students effective habits for success in college, career, and life

HOW ARE WE PERFORMING COMPARED TO OTHER SCHOOLS AND CHARTERS IN THE AREA?



School	Letter Grade
FCA-Online Elem	F
FCA HS	D
AR VA Elem	F
AR VA MS	D
AR VA HS	D
AR Connections	D
Adventure Academy	F

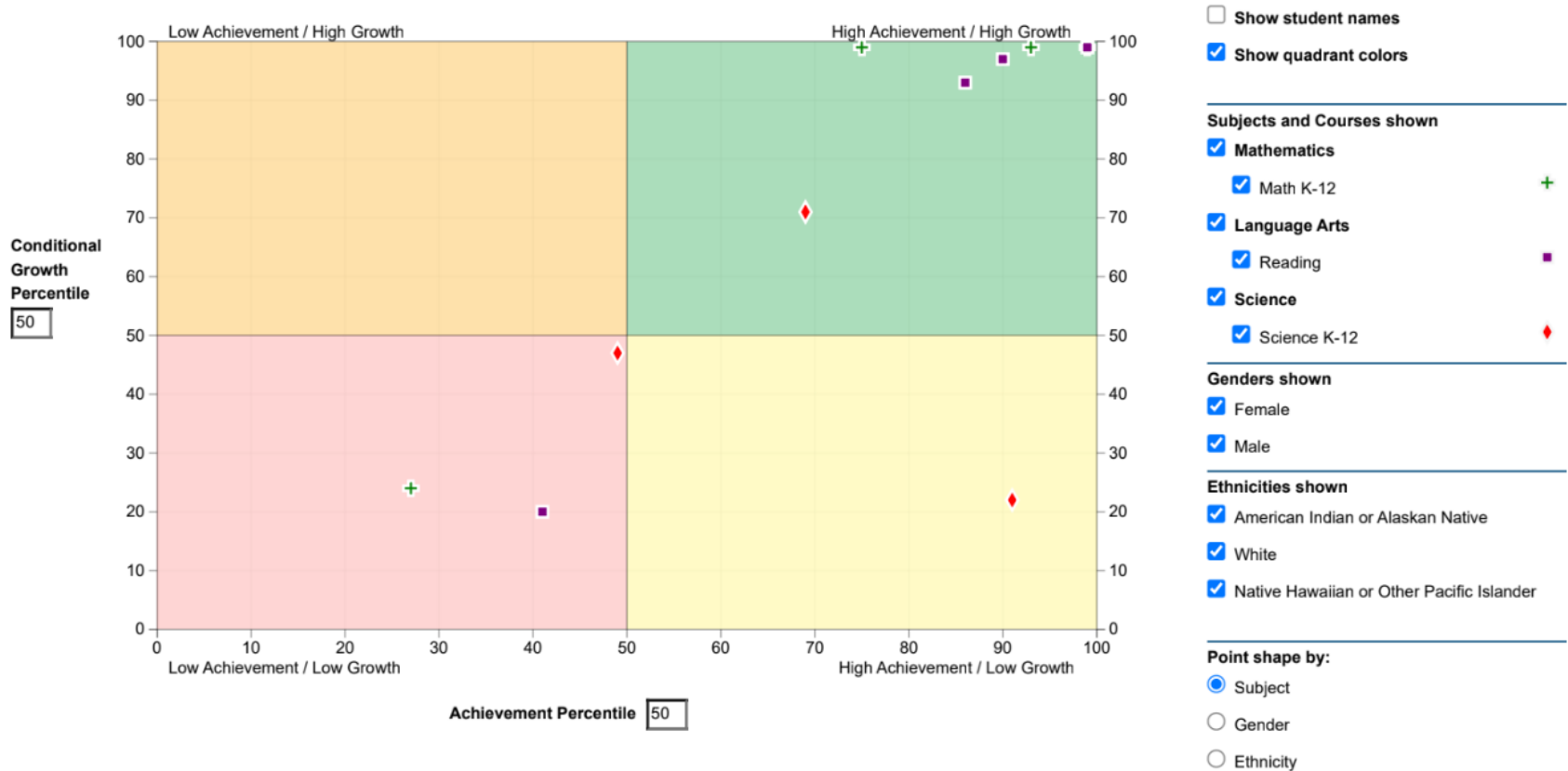
IMPROVEMENT PLAN

OUR PLANS

Literacy	<p>Revisited curriculum maps and realigned Literacy instruction during the day to improve reading for 4-6 grades.</p> <p>Implemented research-based curriculum and conduct daily synchronous reading lessons in K-3; students all have scored above benchmark on DIBELS</p> <p>Receiving support from state appointed Literacy Coach.</p>
Attendance	<p>Implemented more efficient procedures for taking attendance.</p>
Remediation	<p>Implemented the REACH (<i>Reviving Educational Aspirations, Cultivating Hope</i>) program to more closely monitor and support students who are not engaging with school</p>
Achievement & Growth	<p>Instructional team (Instructional Coaches, Learning Facilitators, Learning Mentors) working together to implement quality instruction.</p> <p>Targeted Professional Development</p>



Results So Far



Achievement & Growth Fall 2023 - Winter 2024

Results So Far

Additional Data

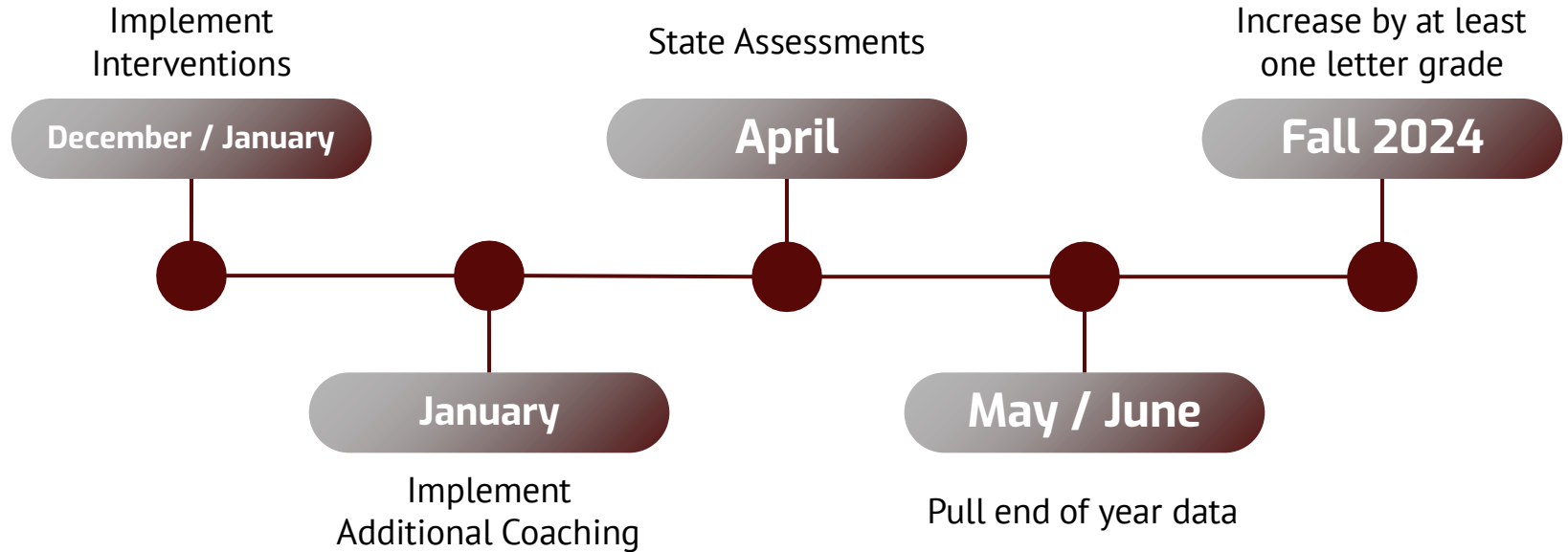
- 75% of students in grades K-6 met projected growth from Fall 23 to Winter 24 in READING on NWEA MAP.
- 75% of students in grades K-6 met projected growth from Fall 23 to Winter 24 in MATH on NWEA MAP .
- 67% of students in grades K-6 met projected growth from Fall 23 to Winter 24 in SCIENCE on NWEA MAP.

Enrollment increased this school year with the addition of grade levels.

SY 22-23	SY 23-24
4 students (grades 4-6)	8 students (grades K-6)

All students in K-2 scored above the benchmark for literacy (DIBELS).

GOALS & OUTCOMES



FCA Online Elementary

Increase by at least
one letter grade for
SY 23-24

Questions

