

# Sheridan School District 48J

## ANNUAL STATE OF OUR SCHOOLS

2015 - 2016

### BUDGET HISTORY:

Total 2015-2016 budget: \$10,672,375

Total 2014-2015 budget: \$10,852,420

Total 2013-2014 budget: \$10,657,230

### SHERIDAN SCHOOL BOARD GOALS

1. Annually, 90% of SSD students in Math and Reading will meet individual growth targets, as measured by the Oregon State Assessments (grades 3-11) and STAR assessment system (grades K-2).
2. Annually, all schools in SSD will improve their Achievement rating by 1 level as measured by the State of Oregon Report Card. Once a school has reached a level 4 rating the school will maintain that rating or higher.
3. Annually increase 4 year and 5 year Graduation Rate by 3 percent, as measured by the State of Oregon.

### ACTIONS TO ACHIEVE OUR GOALS

1. Build an outstanding education system
2. Improve student achievement through continuous improvement and assessments
3. Provide an effective educational organization to support student achievement
4. Support a climate of collaboration to support and promote student achievement at all grade-levels

### A Message from the Superintendent

We thank the Sheridan community for all of the support given to our schools. It is a privilege to work in such a caring community. We value your input and the energy you give to our students. We could not be successful without the many community members who give of their time to our students.

The staff of the Sheridan School District is dedicated to giving our students the best possible education. We make sure that we use every minute of instructional time wisely and we train staff to be up to date on the most current instructional strategies.

This year we are implementing a new reading curriculum 'Reach for Reading' and are seeing great results from this new program. In the coming months we will be adopting a new mathematics curriculum for grades K through 12. There will be opportunities for parents and community members to review the choices for our math adoption.

The construction from the bond passed in May of 2014 is complete and we again thank the community for the improvements this bond has made possible. Our students now go to school in more secure buildings that are better ventilated and energy efficient. The drinking water is much better and students are drinking more water due to the addition of hydration stations in both buildings.

If you have any questions, please call me at 971-261-6959 or check out our website: [www.sheridan.k12.or.us](http://www.sheridan.k12.or.us) for the latest news about our schools.

Sincerely,  
Steven Sugg



## SHERIDAN SCHOOL DISTRICT 48J

435 S Bridge Street  
 Sheridan, Oregon 97378  
 Phone: 971-261-6959  
 Fax: 503-843-3505  
[www.sheridan.k12.or.us](http://www.sheridan.k12.or.us)



# Overview

## Student Diversity

White	790
Black	6
Hispanic or Latino	150
Asian	9
Pacific Islander	4
Native American	38
Multi-Racial	78
Total	1075

## Staff

- Sheridan School District continues to recruit and retain the best possible staff. Staff work together to support our students in meeting state benchmarks.
- 100% of our teachers are “Highly Qualified” as defined by the federal No Child Left Behind standard.
- We have 16 Educational Assistants assisting in our classrooms.
- Our staff continues to participate in professional development in areas such as:  
AVID (Advancement Via Individual Determination)  
PLC (Professional Learning Communities)  
Common Core Standards  
Mapping District Curriculum to Common Core Standards  
Instructional Best Practices  
Common Formative Assessments  
Teaching Students from Poverty

## Future

- Continued growth of our AVID program
- Growth in number of students taking college courses
- Career-technical classes providing career exploration and job skills.
- Essential skills toward graduation [www.ode.state.or.us](http://www.ode.state.or.us)
- Meeting state benchmarks [www.ode.state.or.us](http://www.ode.state.or.us)
- Students take advantage of diverse opportunities for high school completion.

## Overview

- Student Enrollment: 1075
- Five Schools
  - Faulconer-Chapman School
  - Sheridan High School
  - Spartan Academy/House of Hope (alternative)
  - Sheridan Japanese School
  - Sheridan AllPrep Academy
- 116 dedicated staff
- Participation in Community Eligibility Program – free breakfast and lunch
- 2% of our students are English Language Learners (ELL)
- 10% of our students are receiving Special Education services
- 4-Year Cohort Graduation Rate  
SHS Graduation Rate 89.58%  
SJS Graduation Rate 66.67%  
AllPrep Graduation Rate 23.33%  
District Graduation Rate 58.95%
- Member of the West Valley League
- Member of Willamette Education Service District

## Achievement Compact Goals

- Increase Student Achievement by 50%
- 77% of all 9<sup>th</sup> graders are on track for graduation
- Increase the graduation rate to 90%
- Increase the attendance rate of 6<sup>th</sup> graders to 95%.

## School Board

Position 1:	Michael Griffith	Term Expiration:	6/30/2017
Position 2:	Larry Deibel	Term Expiration:	6/30/2017
Position 3:	Jeff Ashlock	Term Expiration:	6/30/2019
Position 4:	Judy Breeden	Term Expiration:	6/30/2019
Position 5:	Terry Chrisman	Term Expiration:	6/30/2017

## School Board Meetings

School Board Meetings are held the third Wednesday of every month at 6:00 p.m. in the District Office, 435 S Bridge Street.



# Schools



## ***Faulconer-Chapman School***

Dave Kline, Principal  
 332 SW Cornwall Street  
 Sheridan, Oregon 97378  
 Phone: (971) 261-6960  
 Fax: (503) 843-3738



## ***Sheridan High School***

Dean Rech, Principal  
 433 S Bridge Street  
 Sheridan, Oregon 97378  
 Phone: (971) 261-6970  
 Fax: (503) 843-3466



## ***Spartan Academy/House of Hope (alternative)***

Dean Rech, Principal  
 433 S Bridge Street  
 Sheridan, Oregon 97378  
 Phone: (971) 261-6970  
 Fax: (503) 843-3466



## ***Sheridan Japanese School***

Andy Scott, Executive Director  
 430 Monroe Street  
 Sheridan, Oregon 97378  
 Phone: (503) 843-3400  
 Fax: (503) 843-7438



## ***Sheridan AllPrep School***

Jesse Eisenschmidt, Director  
 339 NW Sherman St  
 PO Box 583  
 Sheridan, OR 97378  
 Phone: 503-890-8938  
 Fax: 503-843-2878



## 2013-2014 State Report Card

School	State Report Card Rating	Federal Designation
Sheridan High School	Not Rated	Not Rated this school year
Faulconer-Chapman School	Not Rated	Focus
Spartan Academy/House of Hope	Not Rated	Not Rated this school year
Sheridan Japanese School	Not Rated	Not Rated this school year
Sheridan AllPrep	Not Rated	Not Rated this school year

\*School and district performance reports are available in the school offices and the District Office

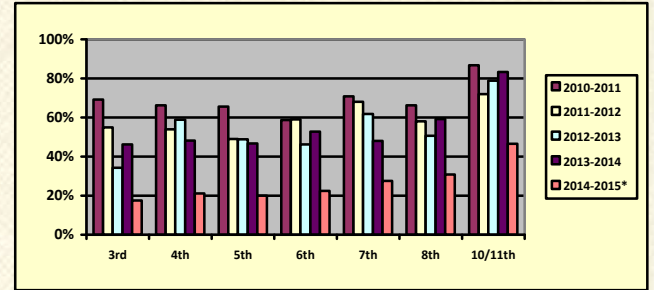


## Assessment Test Results

Students in grades 3<sup>rd</sup> through 8<sup>th</sup> and 11<sup>th</sup> grade are tested in reading and math each year to determine progress toward state benchmarks. These tests measure the “things a student should know” by a grade level. The graphs below show the percentage of Sheridan School District students that have met state benchmarks over the last five years. It is important to note that state tests are a one-time snapshot used to assess how students are doing. State tests are used along with other assessment data to track student progress. The 2014-2015 school year was the first year of the new Smarter Balanced Assessment and will form the base line for comparisons for coming years.

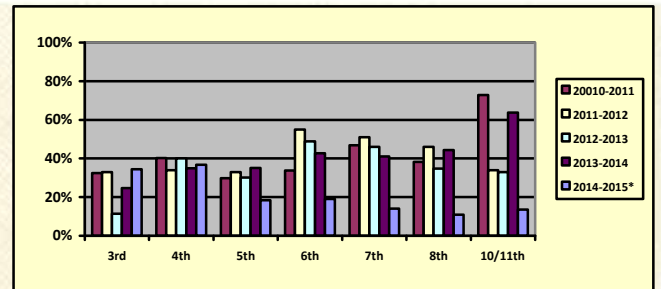
### Reading

Grade	2010-2011	2011-2012	2012-2013	2013-2014	2014-2015*
3 <sup>rd</sup>	69.1%	55%	34.2%	46.2%	17.5%
4 <sup>th</sup>	66.2%	54%	58.8%	48.2%	21.1%
5 <sup>th</sup>	65.5%	49%	48.8%	46.8%	20.0%
6 <sup>th</sup>	58.7%	59%	46.2%	52.8%	22.4%
7 <sup>th</sup>	70.8%	68%	61.8%	48.0%	27.6%
8 <sup>th</sup>	66.3%	58%	50.6%	59.1%	30.9%
10/11 <sup>th</sup>	86.8%	72%	78.9%	83.3%	46.6%



### Math

Grade	2010-2011	2011-2012	2012-2013	2013-2014	2014-2015*
3 <sup>rd</sup>	32.4%	33%	11.4%	24.6%	34.4%
4 <sup>th</sup>	40.3%	34%	40%	34.9%	36.8%
5 <sup>th</sup>	29.8%	33%	30.2%	35.1%	18.3%
6 <sup>th</sup>	33.7%	55%	48.8%	42.7%	19.0%
7 <sup>th</sup>	46.9%	51%	46.1%	41.1%	14.0%
8 <sup>th</sup>	38.2%	46%	34.8%	44.3%	10.9%
10/11 <sup>th</sup>	72.9%	34%	32.9%	63.8%	13.6%



\*First year of Smarter Balanced Assessment

**Sheridan School District staff is dedicated to the success of our students. We work diligently to meet the various academic needs of all students. If you would like additional information regarding our assessment process and results, please call.**

