

2019-2020 GEF IMPACT REPORT



GALVESTON ISD
EDUCATIONAL FOUNDATION

TABLE OF CONTENTS

2	Vision & Mission
3	What We Do
4	Who We Serve
5	Report of Progress
6	Finance Report
7	Grant Cycle
9	Programs & Initiatives
10	Fundraising Report
11	Spring Event 2020
13	COVID-19 Update
15	Board of Directors



VISION

"ANCHORING THE FOUNDATION FOR EVERY GISD STUDENT"



MISSION

GEF'S mission is to enrich the educational experience and prepare students for the future by providing financial assistance to GISD educators, schools, and students.

WHAT WE DO

The GISD Educational Foundation...

- Is a 501 (c) (3) non-profit, tax exempt philanthropic organization independent of the Galveston Independent School District (GISD) but complementing it through partnership
- Shares a vision of enhancing education in GISD schools
- Works to increase private support for public education
- Benefits GISD students and staff by supporting activities that extend beyond what tax dollars afford
- Encourages and recognizes creative approaches to education through grants and involvement
- Is governed by a volunteer board of directors made up of business and community leaders



WHO WE SERVE

STUDENTS

6,949
TOTAL STUDENTS

48% HISPANIC
24% ANGLO
23% AFRICAN AMERICAN
3% OTHER
2% ASIAN

STAFF

1,044
TOTAL EMPLOYEES

457
GISD TEACHERS

\$\$

\$18,689,110
PAID IN RECAPTURE

NEARLY 80% OF
GISD STUDENTS ARE
ECONOMICALLY
DISADVANTAGED

REPORT OF PROGRESS

GEF works to increase private support for public education by cultivating relationships with individuals, businesses, nonprofit organizations, and foundations that share a common goal of ensuring Galveston's children receive the best possible education from pre-kindergarten through high school graduation. GEF achieves this goal through the Grants to Teachers & Schools program.

GEF has operated the Grants to Teachers and Schools program since its inception in 2002. Over the organization's history, GEF has ushered nearly \$4 million of private support toward GISD projects and initiatives.

During the 2019-20 school year, GEF supplemented GISD's traditional revenue sources with more than \$180,000 of private financial investment.



FINANCE REPORT

	2020	2019	2018
PUBLIC SUPPORT & REVENUE			
Contributions & Grants	\$228,148	\$224,635	\$341,110
Special Events (net expenses)	\$110,271	\$108,521	\$110,267
In-Kind Contributions	\$52,020	\$51,453	\$68,793
Investment Income/Losses	\$41,899	\$4,232	\$35,653
TOTAL PUBLIC SUPPORT & REVENUE	\$432,338	\$388,841	\$555,823
PROGRAM SERVICES & EXPENSES			
Grants & Scholarships	\$122,665	\$213,140	\$213,332
Other Program Services	\$80,441	\$73,853	\$104,436
Management & General	\$72,673	\$64,632	\$73,281
Fundraising	\$6,341	\$8,695	\$10,130
TOTAL PROGRAM SERVICES & EXPENSES	\$282,120	\$360,320	\$401,179

*2020 reflects the fiscal year ending August 31, 2020

GRANT CYCLE

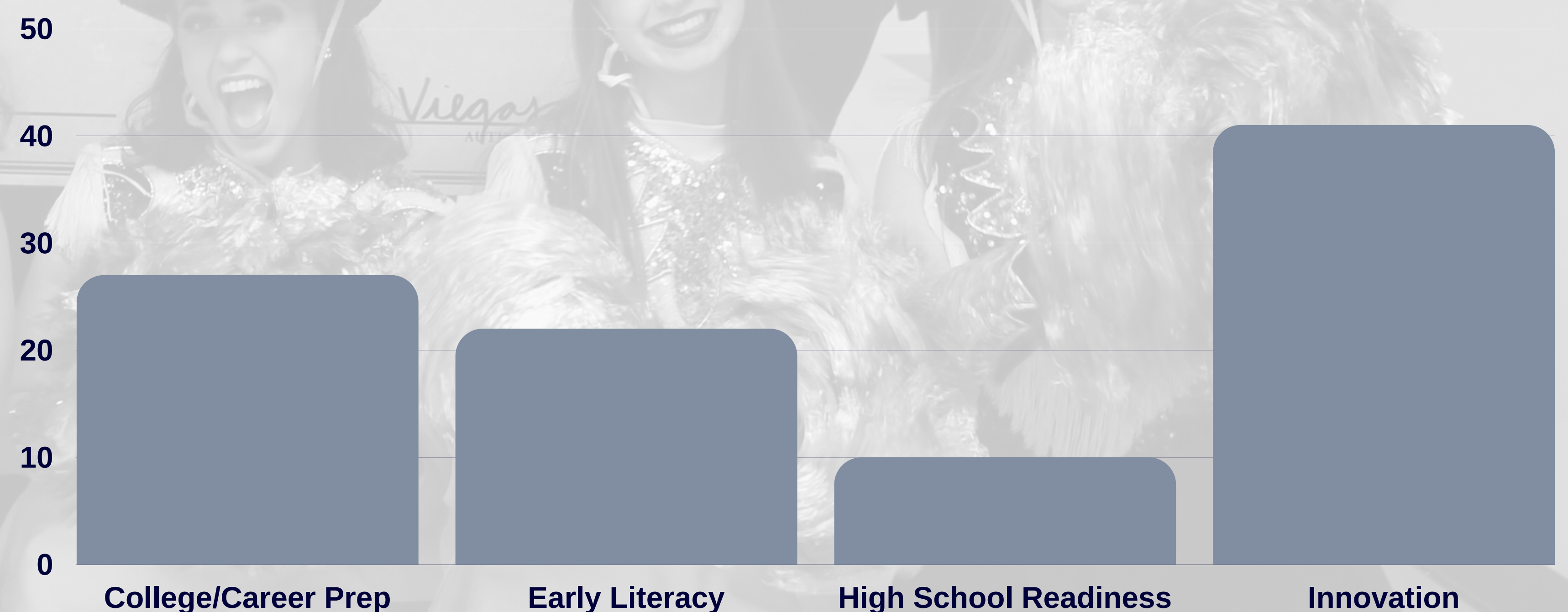
PROVIDING RESOURCES TO EDUCATORS TO IMPLEMENT CLASSROOM PROJECTS

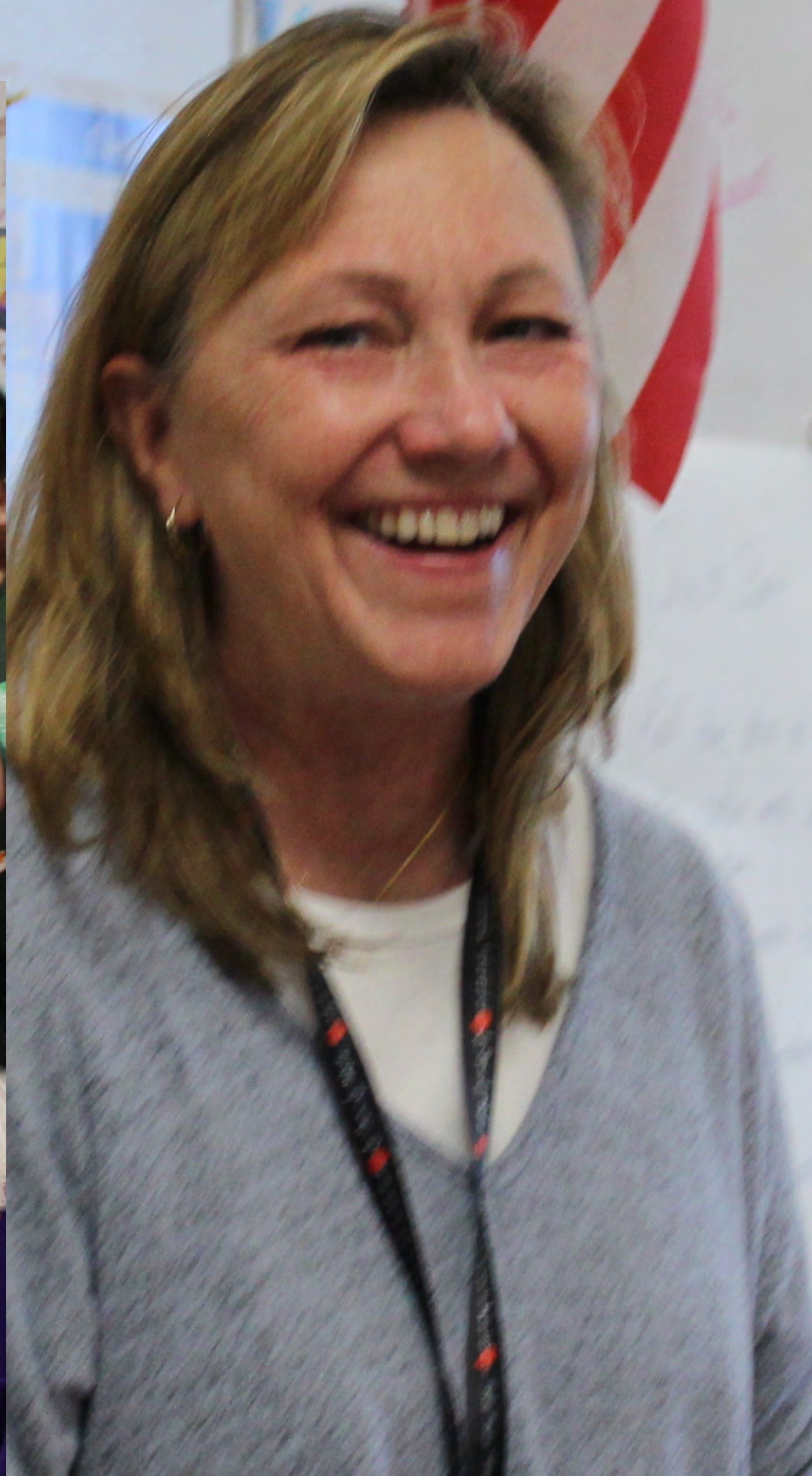
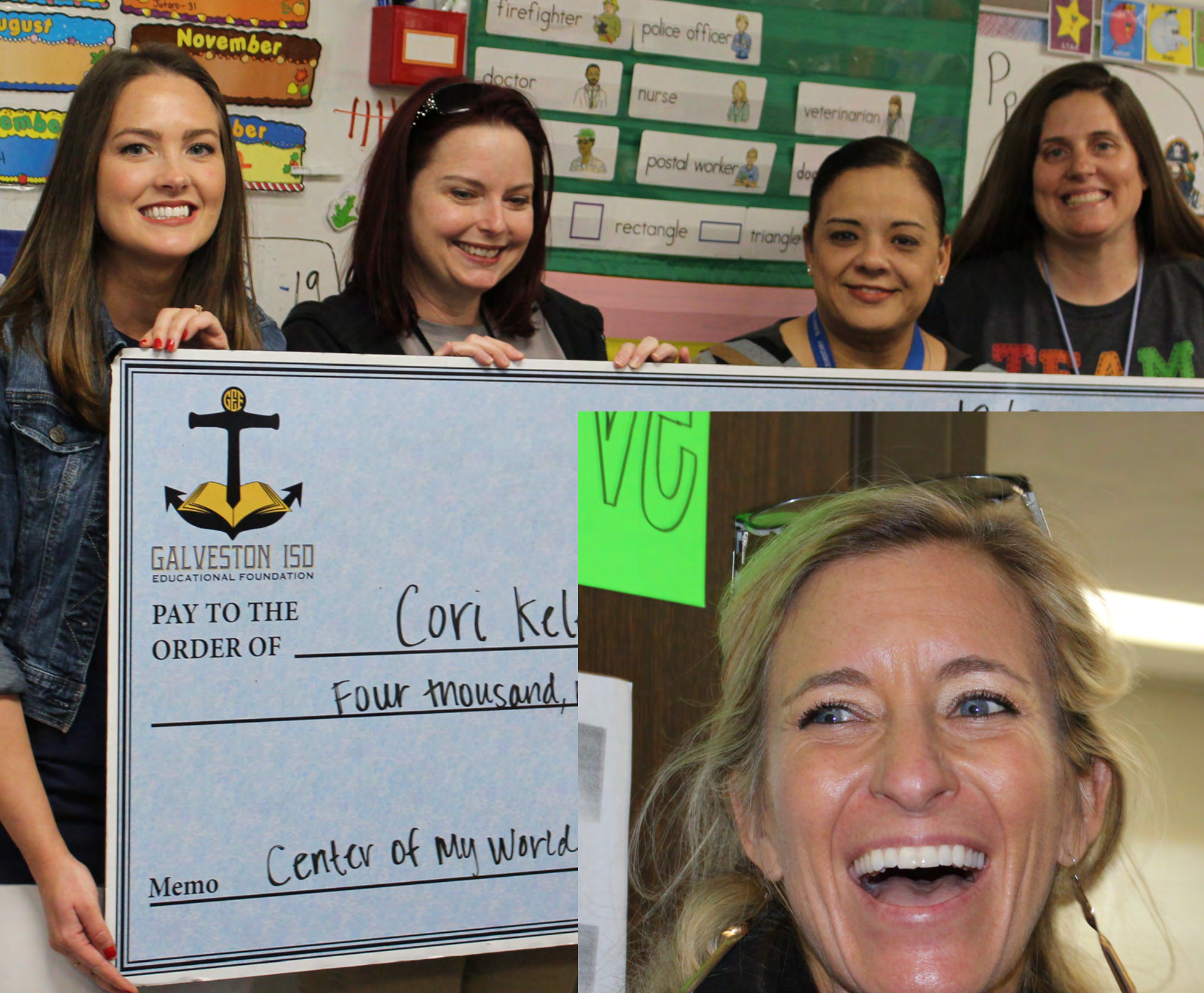
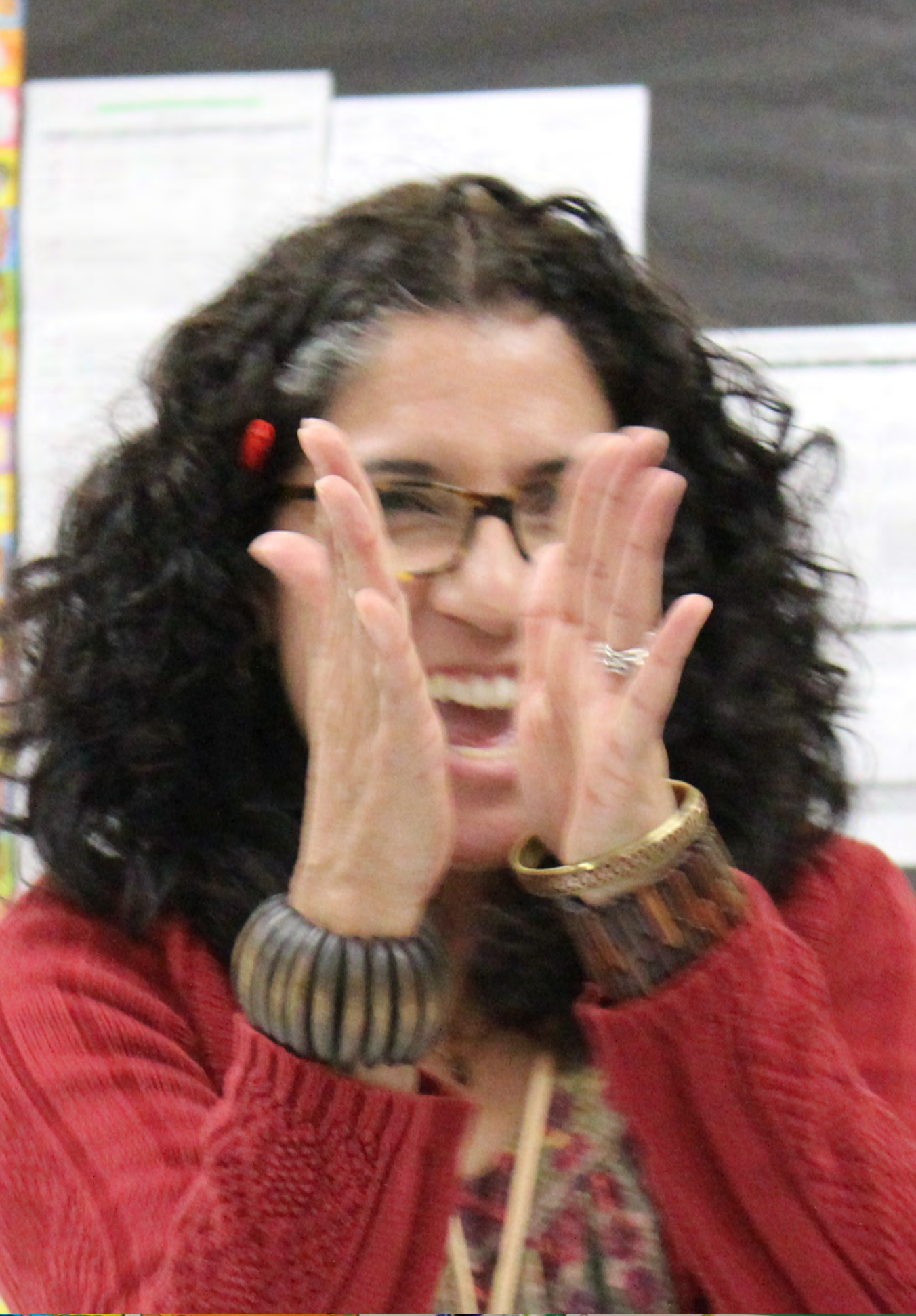
GEF granted \$117,000 to GISD educators to fund projects for the 2019-20 school year. Teachers submitted applications to GEF seeking support for projects aimed to improve student outcomes in the areas of early literacy, high school readiness, and college/career/military readiness. Applicants also proposed projects that took an innovative approach to meeting and exceeding learning objectives.

Books, literacy materials, robotics supplies, microscopes, math manipulatives, graphing calculators, musical instruments and PE equipment are just a few examples of the materials purchased through these projects.



FUNDING BY ISSUE AREA





PROGRAMS & INITIATIVES

DISTRICT INITIATIVE

Each year, GEF collaborates with GISD to secure private funding for large-scale, district-wide initiatives that need financial support. These initiatives are identified by GISD leadership and approved by GEF's board of directors. Past projects include The Book Bus, after school programs and BHS STEM labs.

1ST YEAR TEACHER ACADEMY

Provides training, mentoring, and resources to aid in the success of brand new teachers. GEF budgets for a \$10,000 a year investment in the program and provides gift cards for each new teacher to purchase supplies they need to get established.

JULIE SCHMID SUPPORT FUND

Created in honor of GEF's first executive director and materializes Julie's conviction that every child deserves hope and opportunity. The purpose of the fund is to support children in difficult circumstances that prevent them from participating in valuable educational experiences.

BHS STEM & BIO MED

Created in 2018 to support a growing community effort behind establishing and sustaining a cell culture lab and synthetic cadaver lab at Ball High. GEF supports the program with a \$5,000 annual commitment. Educators who teach those labs also continue to apply for funding during our grants cycle.

GEF ALSO HELPS FUND:

BHS PROJECT GRAD, INCUBATOR, LISA BIFFLE SCHOLARSHIP, TEACHER OF THE YEAR AWARDS

FUNDRAISING REPORT

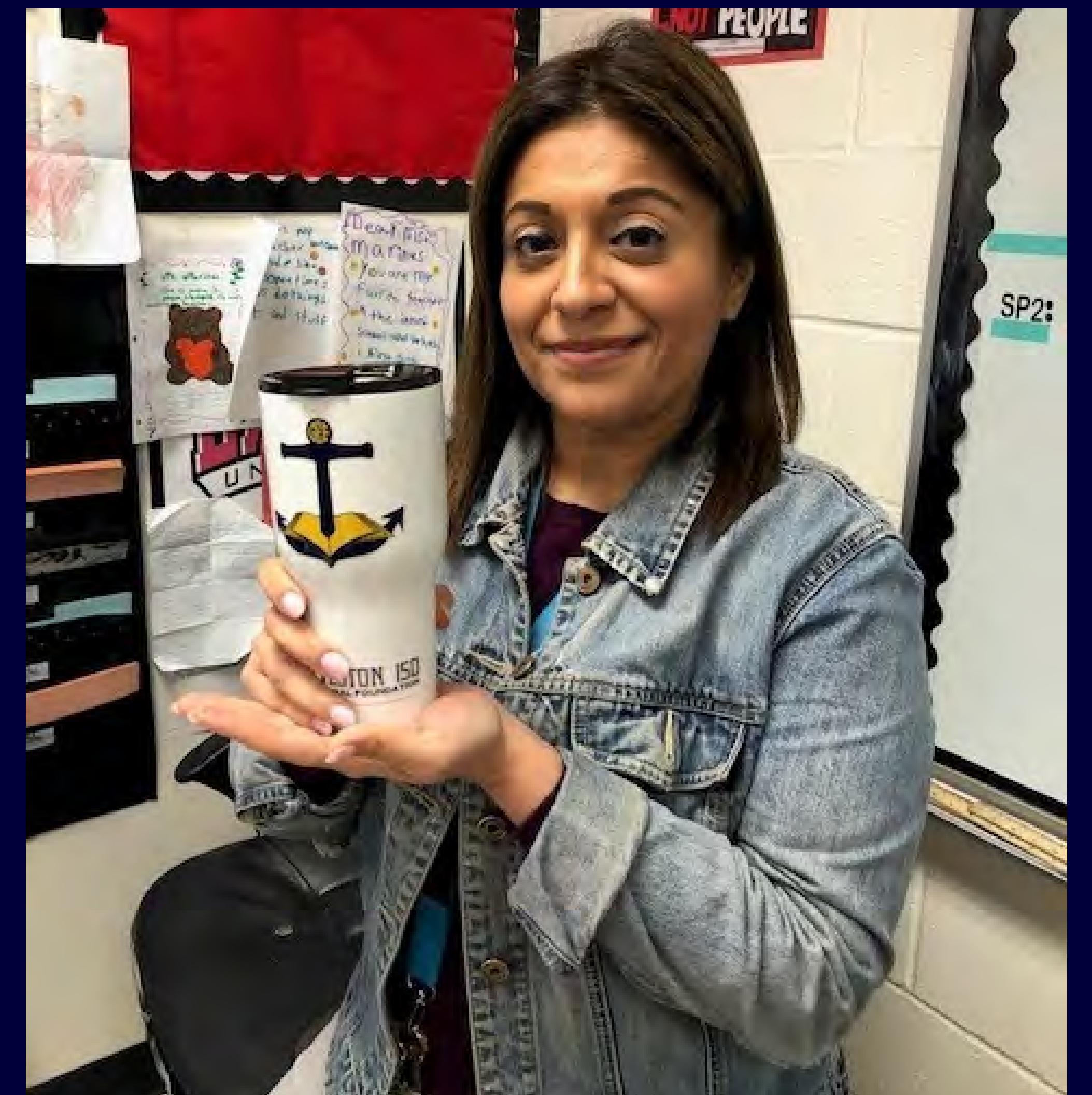


OUT TO EAT FOR EDUCATION

In October of 2019, GEF hosted its fourth annual Out to Eat for Education fundraiser which took place on the night of Ball High School's Homecoming parade. More than 40 restaurants participated by donating a percentage of their food sales. GEF raised over \$13,000 in one day from this event!

EMPLOYEE GIVING CAMPAIGN

GISD employees pledged to donate over \$34,000 via payroll deduction and one-time gifts to GEF's fifth annual Employee Giving Campaign, breaking all of our previous records and more than doubling what we raised just three years prior. We are proud of our GISD family!



DISCOVERING

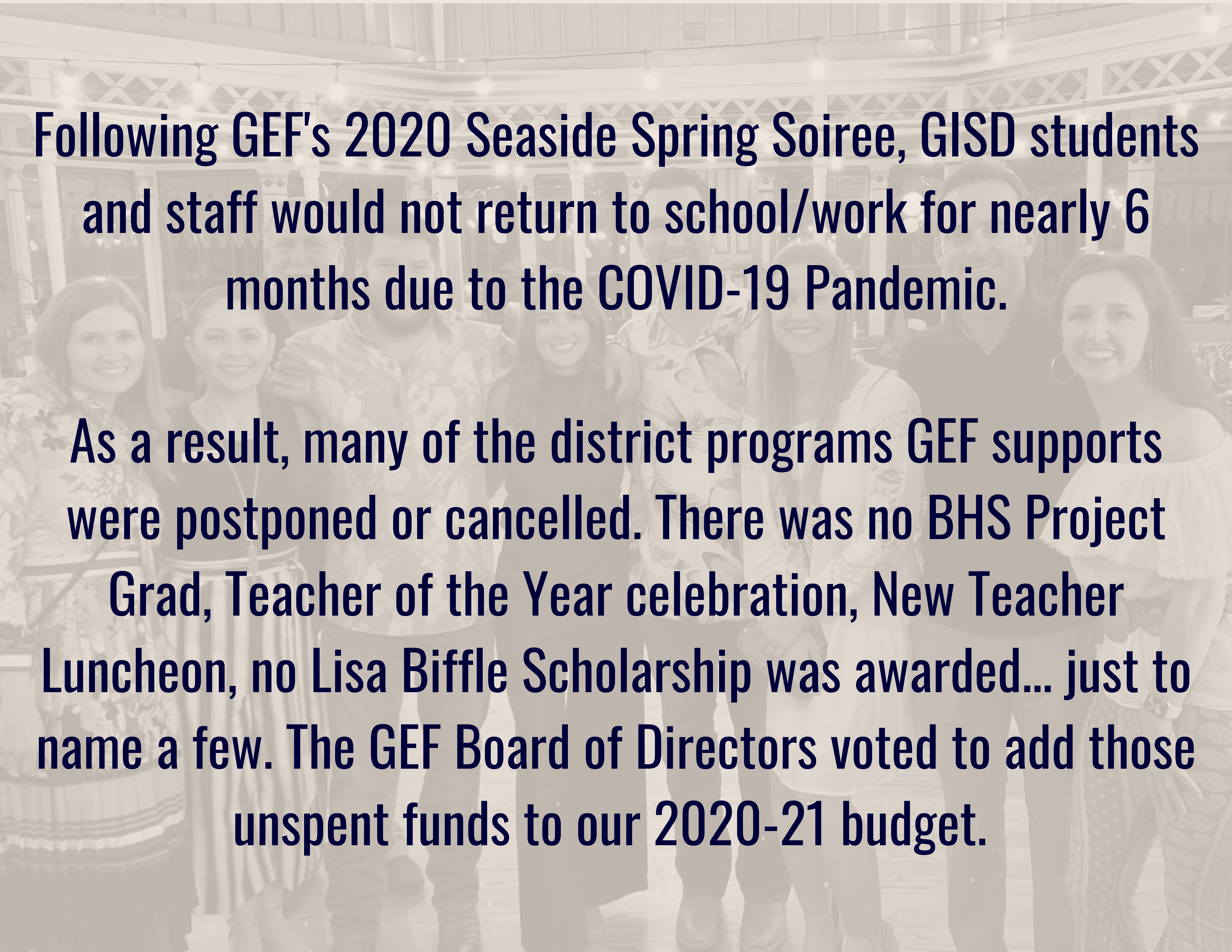


New Treasures

SEASIDE SPRING SOIRÉE 2020





A group of approximately ten people, including men and women of various ages, are smiling and posing for a photo. They are dressed in semi-formal attire. The background is slightly blurred, showing what appears to be an outdoor or semi-outdoor event space with string lights and a lattice structure. The overall tone is positive and celebratory.

Following GEF's 2020 Seaside Spring Soiree, GISD students and staff would not return to school/work for nearly 6 months due to the COVID-19 Pandemic.

As a result, many of the district programs GEF supports were postponed or cancelled. There was no BHS Project Grad, Teacher of the Year celebration, New Teacher Luncheon, no Lisa Biffle Scholarship was awarded... just to name a few. The GEF Board of Directors voted to add those unspent funds to our 2020-21 budget.

The Daily News.

TEXAS' OLDEST NEWSPAPER • PUBLISHING SINCE 1842 • CELEBRATING 177 YEARS

HEALTH | CORONAVIRUS OUTBREAK

Trump declares virus emergency

HEALTH | PUBLIC REACTION

Retailers try to restock shelves as residents panic buy



JENNIFER REYNOLDS/The Daily News

Hollie Rau and her husband, Rodney, buy groceries at Arlan's Market in Santa Fe on Friday. They were stocking up in preparation for their children's spring break being extended another week because of the coronavirus pandemic.

Pelosi announces aid deal

By LISA MASCARO, ZEKE MILLER, ANDREW TAYLOR and JILL COLVIN
Associated Press

» WASHINGTON

President Donald Trump on Friday declared the coronavirus pandemic a national emergency in order to free up more money and resources.

Inside

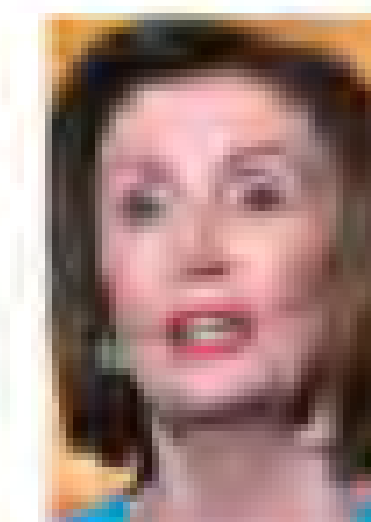
■ Stocks roar back on hopes for virus plan
» A6

Speaking from the Rose Garden, Trump said, "I am officially declaring a national emergency," unleashing as much as \$50 billion for state and local governments to respond to the outbreak.

Trump also announced a range of executive actions, including a



DONALD TRUMP



NANCY PELOSI

new public-private partnership to expand coronavirus testing capabilities with drive-through locations. Late Friday House Speaker Nancy Pelosi announced a deal with the Trump administration for an aid package from Congress that aims at direct relief to Americans — free testing, two weeks of sick pay for workers, enhanced unemployment benefits and bolstered food programs.

See EMERGENCY » A3

COMING SUNDAY

Small businesses and independent contractors feel the bite of coronavirus, and some are finding new opportunities.

HEALTH | GALVESTON COUNTY

County announces

2019-20 BOARD OF DIRECTORS

Donna Mencacci - President
Debbie Sanchez - Vice President
Don Davison - Treasurer
Vivian Pinard - Secretary
Dr. Chris Brownlee
Lynn Clore
Dominic Etienne
Meg Fagg
Erica Farmer
Jason Hardcastle
Keath Jacoby
Kelly Masel
Dr. David McCormick
Brandon Rogers
Mary Jo Urbani

OPPE DOLPHINS



DATE 12/4/23

GALVESTON ISD
PAY TO THE ORDER OF Jenny Applegate & Deborah Ramirez \$3900.00
Eight hundred dollars DOLLARS

Memo Bots & Tots Brittany V...

3904 AVENUE T
GALVESTON, TX 77550
409.766.5156

WWW.GALVESTONEDFOUNDATION.ORG

