



*Wharton County  
Junior College*



# *Monthly Financial Reports*

*September 2016*



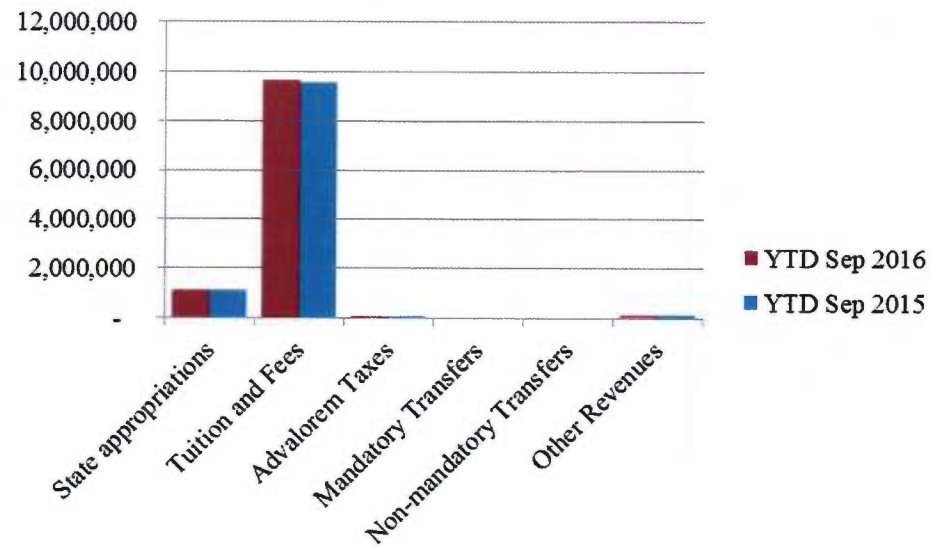
## Revenue & Expenditure Summary

	FISCAL 2017				FISCAL 2016			% OF
	Current Month	Y-T-D ACTUAL	Budget	% of Budget	Y-T-D ACTUAL	Budget	% of Budget	PRIOR YR ACTUAL
<b>Fund 1000</b>								
<b>Revenues:</b>								
State appropriations	\$1,091,530	\$1,091,530	\$ 9,112,077	11.98%	\$1,093,452	\$ 9,112,077	12.00%	100%
Tuition and Fees	9,685,980	9,685,980	21,903,163	44.22%	9,554,797	21,244,443	44.98%	101%
Advalorem Taxes	18,308	18,308	5,800,669	0.32%	14,209	5,238,000	0.27%	129%
Mandatory Transfers	-	-	916,300	0.00%	-	302,500	0.00%	0%
Non-mandatory Transfers	-	-	15,000	0.00%	-	209,111	0.00%	0%
Other Revenues	92,186	92,186	447,907	20.58%	90,992	443,101	20.54%	101%
<b>Total Revenues</b>	<b>10,888,004</b>	<b>10,888,004</b>	<b>38,195,116</b>	<b>28.51%</b>	<b>10,753,450</b>	<b>36,549,232</b>	<b>29.42%</b>	<b>101%</b>
<b>Expenditures:</b>								
Salaries	1,704,687	1,704,687	22,313,349	7.64%	1,608,437	21,354,646	7.53%	106%
Employee Benefits	218,338	218,338	5,234,612	4.17%	201,597	4,940,274	4.08%	108%
Capital Expenditures	-	-	-	-	-	-	-	0%
Mandatory Transfers	-	-	361,800	0.00%	-	357,300	0.00%	0%
Non-mandatory Transfers	-	-	-	-	-	-	-	0%
Other Expenditures	996,646	996,646	10,285,355	9.69%	1,002,632	9,897,012	10.13%	99%
<b>Total expenditures</b>	<b>2,919,671</b>	<b>2,919,671</b>	<b>38,195,116</b>	<b>7.64%</b>	<b>2,812,666</b>	<b>36,549,232</b>	<b>7.70%</b>	<b>104%</b>
<b>Net increase/</b>								
<b>(decrease) in net assets</b>	<b>\$ 7,968,333</b>	<b>\$ 7,968,333</b>			<b>\$ 7,940,784</b>			
<b>Less Outstanding encumbrances</b>		<b>(1,377,799)</b>			<b>(1,289,409)</b>			
<b>Net increase less encumbrances</b>		<b>\$ 6,590,534</b>			<b>\$ 6,651,375</b>			

\* Note: Net student receivables in the amount of \$2,427,557,72 are currently outstanding. Tuition and fees are subject to collection in future periods.

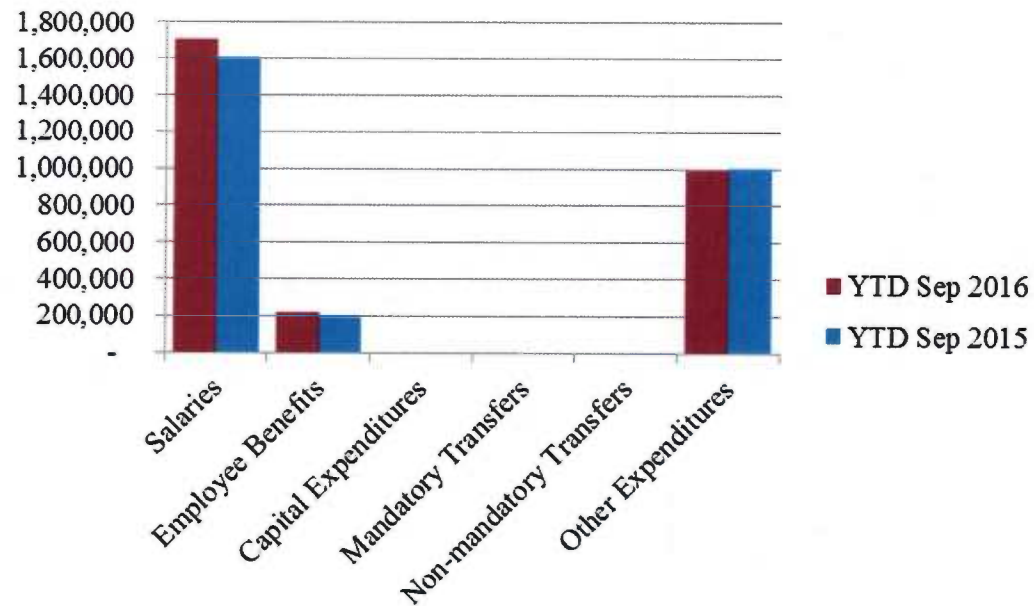


## Year to Date Revenues



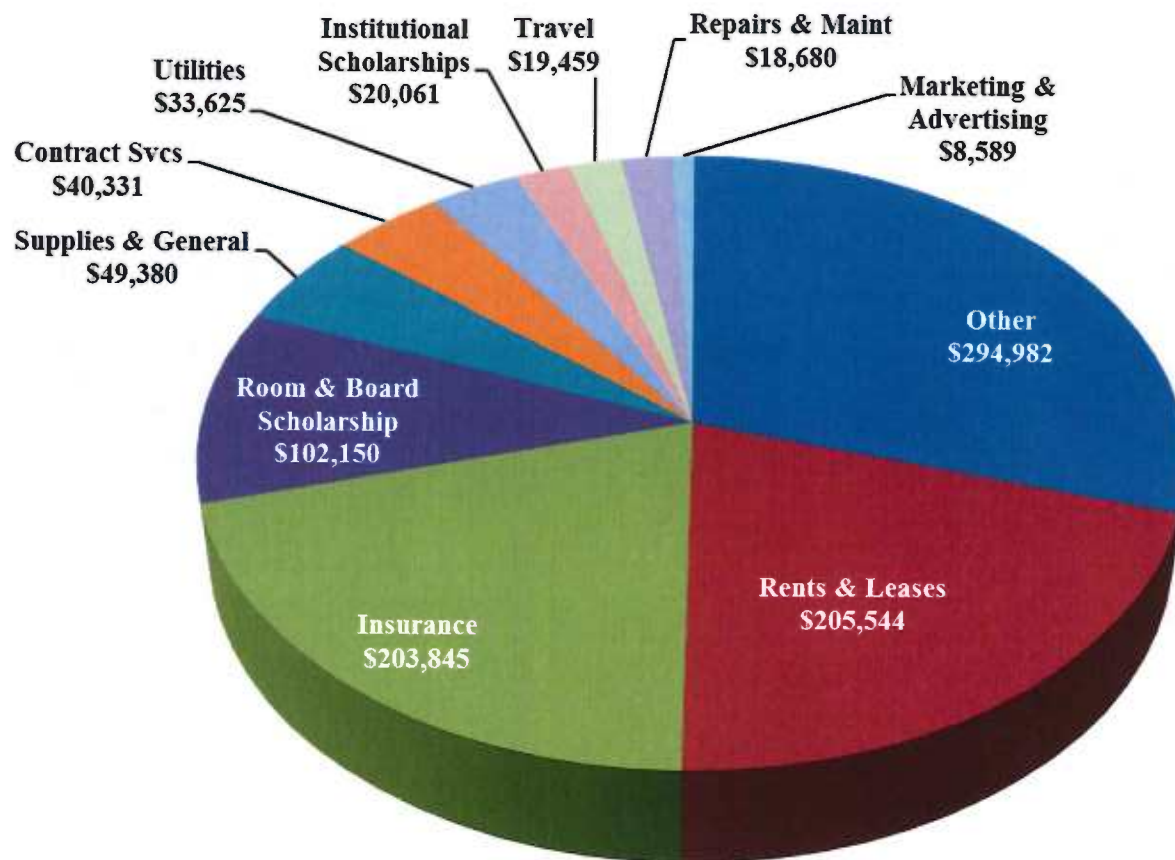


## *Year to Date Expenses*





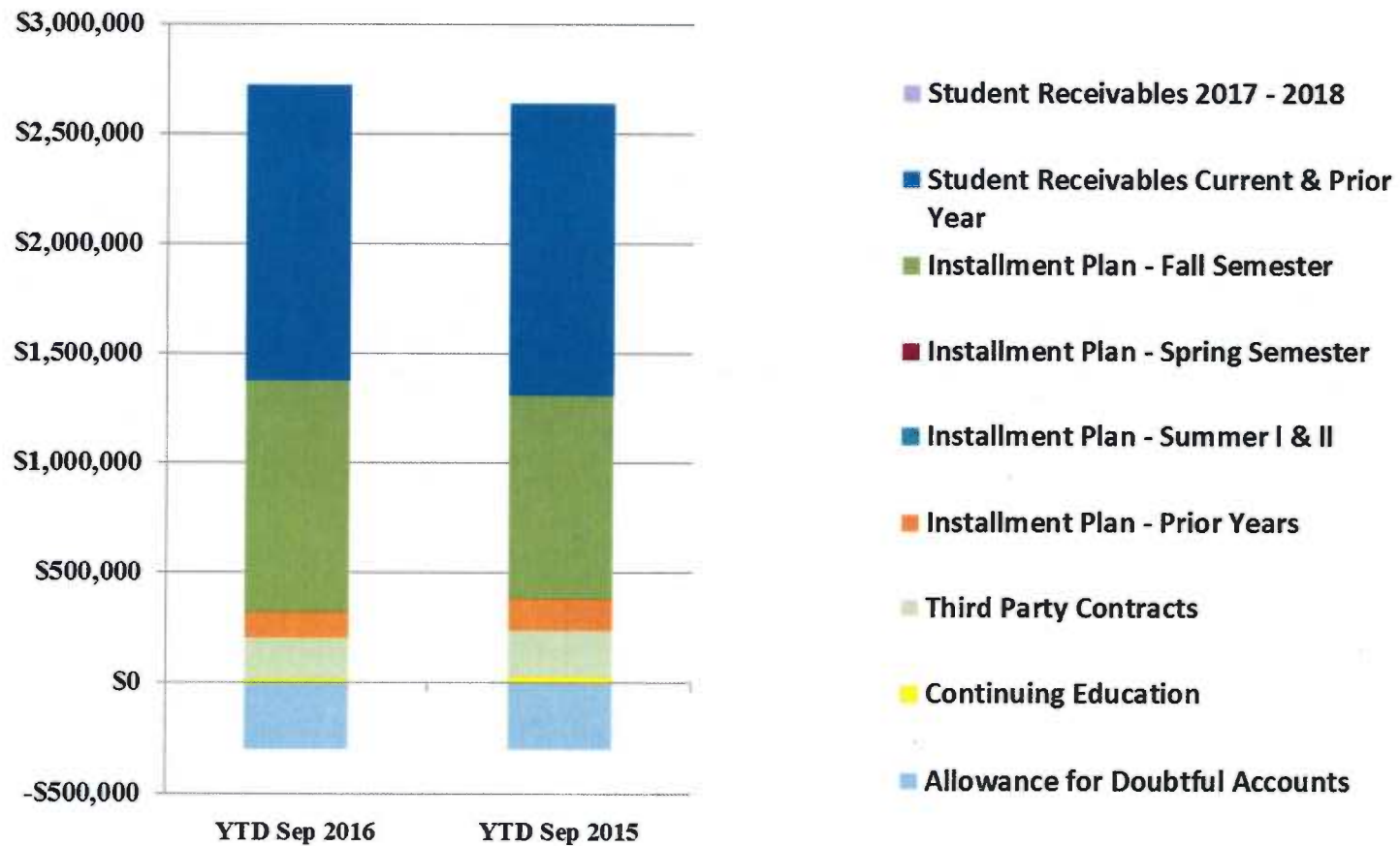
## Other Expenses for September



- Other expenses include maintenance contracts for Banner & Oracle of \$174k
- Rents & Leases include September & October rent for Sugar Land campus
- Insurance annual expense



## AR by Category



# *COMBINED BALANCE SHEET*

*(Funds included: GOVERNMENTAL FUND TYPES)*

Governmental Fund Types

	Auxiliary Enterprise	Restricted Funds	Current Unrestricted	Current Year 2017	Prior Year 2016
<b>ASSETS and OTHER DEBITS:</b>					
<b>ASSETS:</b>					
Cash	429,916	20,578	2,345,504	2,795,998	1,818,007
Cash Investments	699,102	681,497	16,072,993	17,453,592	17,776,051
Accounts Receivable	126,269	5,681	2,446,806	2,578,755	2,509,593
Taxes Receivable		--	349,322	349,322	320,601
Local, St & Fed Agency Receivable		52,391	--	52,391	86,193
Due From Other Funds		100,923	48,119	149,042	69,380
Prepaid Expense	35,057	--	--	35,057	33,304
Property, Plant & Equipment		--	--	--	--
Deferred Outflows		--	2,267,905	2,267,905	886,346
<b>TOTAL ASSETS AND OTHER DEBITS:</b>	<b>1,290,344</b>	<b>861,070</b>	<b>23,530,649</b>	<b>25,682,063</b>	<b>23,499,475</b>
<b>Liabilities, equity and other credits</b>					
<b>LIABILITIES:</b>					
Accounts Payable	1,921	9,815	14,653	26,389	-15,962
Employee Benefits Payable		--	176,527	176,527	168,483
Payroll Taxes Payable		--	--	--	-8,610
Accrued Liabilities		--	--	--	--
Deferred Revenue	285,200	446,064	19,666	750,930	514,951
Long Term Debt		--	--	--	--
Net Pension Liability		--	5,747,658	5,747,658	5,031,677
Deposits Payable	44,985	--	11,378	56,363	52,828
Due To Other Funds	48,119	--	--	48,119	45,594
Scholarships-Designated Donations		101,258	--	101,258	91,520
Scholarships-Non-designated		143,289	--	143,289	135,583
<b>Donatio</b>		--	--	--	--
Deferred Inflows		--	2,169,564	2,169,564	1,538,983
<b>TOTAL LIABILITIES:</b>	<b>380,225</b>	<b>700,426</b>	<b>8,139,446</b>	<b>9,220,097</b>	<b>7,555,047</b>
<b>EQUITY AND OTHER CREDITS:</b>					
Control Accounts		--	--	--	--
Fund Balances		--	--	--	--
Prior Year Fund Balance		--	7,029,039	7,029,039	5,019,854
Endowment Fund-Original		--	--	--	--
Endowment Fund-Income		--	--	--	--
FB Professional Development		--	--	--	--
FB Salary Equity		--	--	--	--
FB Capital Equipment		--	--	--	--



Governmental Fund Types

	Auxiliary Enterprise	Restricted Funds	Current Unrestricted	Current Year 2017	Prior Year 2016
<b>EQUITY AND OTHER CREDITS:</b>					
FB Investment Gain And Loss		--	--		
Fund Balance Receivables		--	--		
Reserved-Undesignated		--	--		
FBTC Operating Fund Balance		--	--		
Plant Fund Balance		--	--		
Bond Fund Balance		--	--		
Scholarship		--	--		
Fund Balance-Rounding Diff		--	--		
<b>Fund Balances:</b>					
Reserve for Encumbrance	34,914	43,199	1,377,799	1,455,912	1,365,373
Fund Balance	875,205	117,444	6,984,364	7,977,014	9,559,200
Reserve For Operations		--	--		
<b>TOTAL EQUITY AND OTHER CREDITS:</b>	<b>910,120</b>	<b>160,643</b>	<b>15,391,202</b>	<b>16,461,965</b>	<b>15,944,428</b>
<b>TOTAL LIABILITIES, EQUITY AND OTHER CREDITS:</b>	<b>1,290,344</b>	<b>861,070</b>	<b>23,530,649</b>	<b>25,682,063</b>	<b>23,499,475</b>
=====					

REPORT FGRCOBS  
COAS: W  
FISCAL YEAR: 17

Wharton County Junior College  
Combined Balance Sheet--All Fund Types and Account Groups  
30-Sep-2016  
(With comparative totals for 30-Sep-2015 )  
(amounts expressed in dollars)

RUN DATE: 10/10/2016  
TIME: 02:04:02 PM  
PAGE: 3

Proprietary Fund Types

	Agency Funds	Current Year 2017	Prior Year 2016
<b>ASSETS and OTHER DEBITS:</b>			
<b>ASSETS:</b>			
Cash	159,174	159,174	131,486
Cash Investments	103,308	103,308	103,011
Accounts Receivable	-	-	-
Taxes Receivable			
Local, St & Fed Agency Receivable			
Due From Other Funds			
Prepaid Expense			
Property, Plant & Equipment			
Deferred Outflows			
<b>TOTAL ASSETS AND OTHER DEBITS:</b>	<b>262,482</b>	<b>262,482</b>	<b>234,497</b>
<b>Liabilities, equity and other credits</b>			
<b>LIABILITIES:</b>			
Accounts Payable			
Employee Benefits Payable		-	-
Payroll Taxes Payable			
Accrued Liabilities			
Deferred Revenue			
Long Term Debt			
Net Pension Liability			
Deposits Payable	262,417	262,417	234,460
Due To Other Funds			
Scholarships-Designated Donations			
Scholarships-Non-designated			
Donatio			
Deferred Inflows			
<b>TOTAL LIABILITIES:</b>	<b>262,417</b>	<b>262,417</b>	<b>234,460</b>
<b>EQUITY AND OTHER CREDITS:</b>			
Control Accounts	65	65	37
Fund Balances			
Prior Year Fund Balance			
Endowment Fund-Original			
Endowment Fund-Income			
FB Professional Development			
FB Salary Equity			
FB Capital Equipment			

REPORT FGRCOBS  
COAS: W  
FISCAL YEAR: 17

Wharton County Junior College  
Combined Balance Sheet--All Fund Types and Account Groups  
30-Sep-2016  
(With comparative totals for 30-Sep-2015 )  
(amounts expressed in dollars)

RUN DATE: 10/10/2016  
TIME: 02:04:02 PM  
PAGE: 4

Proprietary Fund Types

Agency Funds	Current Year 2017	Prior Year 2016
<hr/>		
EQUITY AND OTHER CREDITS:		
FB Investment Gain And Loss		
Fund Balance Receivables		
Reserved-Undesignated		
FBTC Operating Fund Balance		
Plant Fund Balance		
Bond Fund Balance		
Scholarship		
Fund Balance-Rounding Diff		
Fund Balances:		
Reserve for Encumbrance		
Fund Balance		
Reserve For Operations		
TOTAL EQUITY AND OTHER CREDITS:	65	37
<hr/>		
TOTAL LIABILITIES,	262,482	234,497
EQUITY AND OTHER CREDITS:	262,482	234,497
=====		

REPORT FGRCOBS  
 COAS: W  
 FISCAL YEAR: 17

Wharton County Junior College  
 Combined Balance Sheet--All Fund Types and Account Groups  
 30-Sep-2016  
 (With comparative totals for 30-Sep-2015 )  
 (amounts expressed in dollars)

RUN DATE: 10/10/2016  
 TIME: 02:04:02 PM  
 PAGE: 5

Fiduciary Fund Types

	Quasi Endowment Fund	Endowment Funds	Current Year 2017	Prior Year 2016
<b>ASSETS and OTHER DEBITS:</b>				
<b>ASSETS:</b>				
Cash		164,286	164,286	356,061
Cash Investments		9,311,178	9,311,178	8,281,409
Accounts Receivable		6,014	6,014	610
Taxes Receivable		--	--	--
Local, St & Fed Agency Receivable		--	--	--
Due From Other Funds		--	--	--
Prepaid Expense		--	--	--
Property, Plant & Equipment		--	--	--
Deferred Outflows		--	--	--
<b>TOTAL ASSETS AND OTHER DEBITS:</b>		<b>9,481,478</b>	<b>9,481,478</b>	<b>8,638,080</b>
<b>Liabilities, equity and other credits</b>				
<b>LIABILITIES:</b>				
Accounts Payable		--	--	--
Employee Benefits Payable		--	--	--
Payroll Taxes Payable		--	--	--
Accrued Liabilities		--	--	--
Deferred Revenue		--	--	--
Long Term Debt		--	--	--
Net Pension Liability		--	--	--
Deposits Payable		--	--	--
Due To Other Funds		100,923	100,923	23,787
Scholarships-Designated Donations		--	--	--
Scholarships-Non-designated		--	--	--
Donatio		--	--	--
Deferred Inflows		--	--	--
<b>TOTAL LIABILITIES:</b>		<b>100,923</b>	<b>100,923</b>	<b>23,787</b>
<b>EQUITY AND OTHER CREDITS:</b>				
Control Accounts		--	--	--
Fund Balances		--	--	--
Prior Year Fund Balance		--	--	--
Endowment Fund-Original		--	--	--
Endowment Fund-Income		--	--	--
FB Professional Development		--	--	--
FB Salary Equity		--	--	--
FB Capital Equipment		--	--	--

Fiduciary Fund Types

	Quasi Endowment Fund	Endowment Funds	Current Year 2017	Prior Year 2016
<hr/>				
EQUITY AND OTHER CREDITS:				
FB Investment Gain And Loss		--		
Fund Balance Receivables		--		
Reserved-Undesignated		--		
FBTC Operating Fund Balance		--		
Plant Fund Balance		--		
Bond Fund Balance		--		
Scholarship		--		
Fund Balance-Rounding Diff		--		
Fund Balances:				
Reserve for Encumbrance		--		
Fund Balance		9,380,555	9,380,555	8,614,294
Reserve For Operations		--		
TOTAL EQUITY AND OTHER CREDITS:		9,380,555	9,380,555	8,614,294
<hr/>				
TOTAL LIABILITIES, EQUITY AND OTHER CREDITS:		9,481,478	9,481,478	8,638,080
<hr/>				
=====				

Account Groups

	Repair and Replacement	Debt Retirement Bond Fund	Investment in Plant Fund	Unexpended Plant Fund	Current Year 2017	Prior Year 2016
<b>ASSETS and OTHER DEBITS:</b>						
<b>ASSETS:</b>						
Cash	13,239,279	366,034	--	-12,649,603	955,710	4,931,822
Cash Investments	--	--	--	20,767,797	20,767,797	15,416,333
Accounts Receivable	--	--	--	67,860	67,860	32,415
Taxes Receivable	--	--	--	--	--	--
Local, St & Fed Agency Receivable	--	--	--	--	--	--
Due From Other Funds	--	--	--	--	--	--
Prepaid Expense	--	--	--	--	--	--
Property, Plant & Equipment	--	--	24,819,168	--	24,819,168	23,995,750
Deferred Outflows	--	--	--	--	--	--
<b>TOTAL ASSETS AND OTHER DEBITS:</b>	<b>13,239,279</b>	<b>366,034</b>	<b>24,819,168</b>	<b>8,186,054</b>	<b>46,610,535</b>	<b>44,376,319</b>
<b>Liabilities, equity and other credits</b>						
<b>LIABILITIES:</b>						
Accounts Payable	--	--	--	--	--	--
Employee Benefits Payable	--	--	--	--	--	--
Payroll Taxes Payable	--	--	--	--	--	--
Accrued Liabilities	--	25,670	--	--	25,670	27,508
Deferred Revenue	--	--	--	--	--	--
Long Term Debt	--	--	2,284,087	--	2,284,087	2,579,670
Net Pension Liability	--	--	--	--	--	--
Deposits Payable	--	--	--	--	--	--
Due To Other Funds	--	--	--	--	--	--
Scholarships-Designated Donations	--	--	--	--	--	--
Scholarships-Non-designated	--	--	--	--	--	--
Donatio	--	--	--	--	--	--
Deferred Inflows	--	--	--	--	--	--
<b>TOTAL LIABILITIES:</b>		<b>25,670</b>	<b>2,284,087</b>		<b>2,309,756</b>	<b>2,607,178</b>
<b>EQUITY AND OTHER CREDITS:</b>						
Control Accounts	--	--	--	--	--	--
Fund Balances	--	--	--	--	--	--
Prior Year Fund Balance	--	--	--	--	--	--
Endowment Fund-Original	--	--	--	--	--	--
Endowment Fund-Income	--	--	--	--	--	--
FB Professional Development	--	--	--	--	--	--
FB Salary Equity	--	--	--	--	--	--
FB Capital Equipment	--	--	16,316,287	--	16,316,287	14,209,519



Memorandum Only

	Current Year 2017	Prior Year 2016
<b>ASSETS and OTHER DEBITS:</b>		
<b>ASSETS:</b>		
Cash	4,075,168	7,237,376
Cash Investments	47,635,875	41,576,805
Accounts Receivable	2,652,629	2,542,617
Taxes Receivable	349,322	320,601
Local, St & Fed Agency Receivable	52,391	86,193
Due From Other Funds	149,042	69,380
Prepaid Expense	35,057	33,304
Property, Plant & Equipment	24,819,168	23,995,750
Deferred Outflows	2,267,905	886,346
<b>TOTAL ASSETS AND OTHER DEBITS:</b>	<b>82,036,558</b>	<b>76,748,372</b>
<b>Liabilities, equity and other credits</b>		
<b>LIABILITIES:</b>		
Accounts Payable	26,389	-15,962
Employee Benefits Payable	176,527	168,483
Payroll Taxes Payable	-	-8,610
Accrued Liabilities	25,670	27,508
Deferred Revenue	750,930	514,951
Long Term Debt	2,284,087	2,579,670
Net Pension Liability	5,747,658	5,031,677
Deposits Payable	318,780	287,288
Due To Other Funds	149,042	69,380
Scholarships-Designated Donations	101,258	91,520
Scholarships-Non-designated	143,289	135,583
<b>Donatio</b>		
Deferred Inflows	2,169,564	1,538,983
<b>TOTAL LIABILITIES:</b>	<b>11,893,193</b>	<b>10,420,473</b>
<b>EQUITY AND OTHER CREDITS:</b>		
Control Accounts	65	37
Fund Balances		
Prior Year Fund Balance	7,029,039	5,019,854
Endowment Fund-Original		
Endowment Fund-Income		
FB Professional Development		
FB Salary Equity		
FB Capital Equipment	16,316,287	14,209,519
FB Investment Gain And Loss		
Fund Balance Receivables	-	-
Reserved-Undesignated		
FBTC Operating Fund Balance		



Memorandum Only

	Current Year 2017	Prior Year 2016
Plant Fund Balance		
Bond Fund Balance		
Scholarship		
Fund Balance-Rounding Diff	-	-
Fund Balances:		
Reserve for Encumbrance	1,455,912	1,365,373
Fund Balance	45,342,061	45,733,116
Reserve For Operations		
TOTAL EQUITY AND OTHER CREDITS:	70,143,365	66,327,899
TOTAL LIABILITIES, EQUITY AND OTHER CREDITS:	82,036,558	76,748,372
	=====	=====

# *Investments*

**SEPTEMBER 30, 2016**

**WHARTON COUNTY JUNIOR COLLEGE**

**INVESTMENT IN TEXPOOL**

**September 30, 2016**

**MONTHLY INTEREST RATE .3799%**

		<b>AVERAGE</b>	<b>END-OF-</b>		<b>YEAR-TO-</b>
	<b>ACCOUNT</b>	<b>DAILY</b>	<b>MONTH</b>	<b>MONTHLY</b>	<b>DATE</b>
<b>FUND</b>	<b>NUMBER</b>	<b>BALANCE</b>	<b>BALANCE</b>	<b>EARNINGS</b>	<b>EARNINGS</b>
UNRESTRICTED	2411100002	\$8,453,306.10	\$9,022,858.53	\$ 2,640.62	\$2,640.62
AUXILIARY	2411100001	698,891.12	\$699,102.09	218.24	218.24
RESTRICTED	2411100017	82,624.61	82,649.52	25.77	25.77
SCHOLARSHIP	2411100019	598,666.71	598,847.42	186.94	186.94
ENDOWMENT	2411100014	1,190,831.31	1,191,190.75	371.83	371.83
PLANT	2411100015	2,714,582.65	2,715,402.10	847.71	847.71
AGENCY	2411100016	103,276.79	103,307.97	32.26	32.26
			\$14,413,358.38	\$4,323.37	\$4,323.37

**WHARTON COUNTY JUNIOR COLLEGE  
HISTORY OF TEXPOOL INTEREST RATES**

<b>MONTH</b>	<b>2002</b>	<b>2003</b>	<b>2004</b>	<b>2005</b>	<b>2006</b>	<b>2007</b>	<b>2008</b>	<b>2009</b>	<b>2010</b>	<b>2011</b>	<b>2012</b>	<b>2013</b>	<b>2014</b>	<b>2015</b>	<b>2016</b>
JANUARY	2.0548%	1.3891%	1.0187%	2.2325%	4.2714%	5.2718%	4.2460%	0.9529%	0.1630%	0.1587%	0.0875%	0.0986%	0.0273%	0.0465%	0.2674%
FEBRUARY	1.8577%	1.3472%	1.0270%	2.4406%	4.4833%	5.2802%	3.4374%	0.6690%	0.1512%	0.1470%	0.0903%	0.0935%	0.0283%	0.0441%	0.3010%
MARCH	1.7815%	1.3298%	1.0280%	2.5708%	4.5697%	5.2933%	2.9723%	0.5788%	0.1577%	0.1461%	0.1150%	0.1047%	0.0299%	0.0480%	0.3273%
APRIL	1.8341%	1.2629%	1.0162%	2.7591%	4.7397%	5.2738%	2.4471%	0.4762%	0.1662%	0.1122%	0.1110%	0.1022%	0.0336%	0.0524%	0.3380%
MAY	1.8223%	1.2326%	1.0240%	2.9563%	4.9024%	5.2568%	2.2812%	0.4326%	0.1935%	0.0838%	0.1246%	0.0715%	0.0244%	0.0553%	0.3399%
JUNE	1.8324%	1.1973%	1.0623%	3.0583%	5.0021%	5.2884%	2.2635%	0.3939%	0.2078%	0.0793%	0.1395%	0.0576%	0.0284%	0.0575%	0.3633%
JULY	1.8936%	1.0604%	1.2557%	3.2577%	5.2258%	5.2760%	2.2460%	0.3384%	0.2259%	0.0665%	0.1316%	0.0531%	0.0313%	0.0630%	0.3690%
AUGUST	1.8709%	1.0408%	1.4121%	3.4512%	5.2355%	5.2473%	2.2878%	0.3380%	0.2279%	0.0851%	0.1313%	0.0437%	0.0353%	0.0716%	0.3737%
SEPTEMBER	1.8693%	1.0308%	1.5424%	3.6028%	5.2648%	5.1330%	2.4068%	0.2822%	0.2165%	0.0929%	0.1572%	0.0394%	0.0333%	0.0850%	0.3799%
OCTOBER	1.8609%	1.0302%	1.7129%	3.7823%	5.2831%	4.9280%	1.9762%	0.2095%	0.2036%	0.0839%	0.1657%	0.0498%	0.0268%	0.0966%	
NOVEMBER	1.5622%	1.0344%	1.8491%	3.9888%	5.2780%	4.7144%	1.8207%	0.2112%	0.1917%	0.1033%	0.1564%	0.0446%	0.0286%	0.1105%	
DECEMBER	1.4629%	1.0327%	2.0685%	4.1676%	5.2859%	4.5565%	1.4855%	0.2090%	0.1587%	0.0871%	0.1506%	0.0372%	0.0418%	0.1863%	

# INVESTMENT REPORT

## 4TH QUARTER 2016

Period Beginning 06/01/16 Ending 08/31/16

August 31, 2016

The report that follows details the investments and earnings made by Wharton County Junior College (the College). Investments for all funds excluding the Endowment fund were made according to the College's investment policy dated August 18, 2015 and reflect compliance with the Texas Public Funds Investments Act, Chapter 2256.023. Investments for the Endowment fund were made according to the College's Endowment Fund Investment Policy.

Summarized below are the investments made by type of investment. Please see the attached schedules for further detail. Please direct all questions to Bryce Kocian, Investment Officer and Vice-President of Administrative Services, Wharton County Junior College, 911 Boling Highway, Wharton, Texas 77488. Phone: 979/532-6315 E-mail: [brycek@wcjc.edu](mailto:brycek@wcjc.edu)

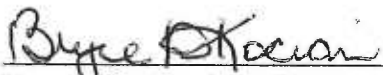


## TOTAL INVESTMENT IN (as of period ending date 08/31/16)

	<b>INCOME AMOUNT THIS QUARTER</b> (Earned & Accrued)	<b>QUARTER ENDING BOOK/MARKET VALUE</b> (Includes gains and losses)
TEXPOOL	\$ 12,574.71	\$ 13,269,962.86
GOVERNMENT SECURITIES CERTIFICATES OF DEPOSIT	\$ 95,077.08	\$ 28,274,559.50
STOCKS	\$ 385.34	\$ 0.00
MUTUAL FUNDS	\$ 1,484.18	\$ 253,635.86
REAL ESTATE	\$ 11,513.10	\$ 4,583,693.19
	\$ 0.00	\$ 111,000.00

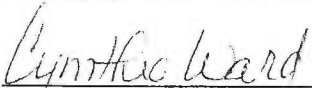
## EXPLANATION OF REPORT TERMS

This report reflects the market value at the end of the stated period. This market value, what an independent, willing buyer will pay for the asset being offered, is based on information from various sources, usually a report by the firm from which the security was obtained or the Wall Street Journal. Yields are obtained from the same source as the market value. Starting with the F/Y 1997 financial statements all investments are stated at fair value, as required by GASB 31 and income is accrued each quarter.




---

 Bryce D. Kocian, Investment Officer




---

 Cynthia Ward, Investment Officer



**Wharton County Junior College**  
911 Boling Highway • Wharton, Texas 77488 • (979) 632-4680

FY 16											
SUMMARY						SUMMARY					
FUND	S&P CREDIT RATING	MATURITY DATE	BEGINNING BOOK VALUE	BEGINNING MARKET VALUE	CHANGES ADDITIONS	CHANGES DEDUCTIONS	ENDING MARKET VALUE	INCOME ACCRUED OR RECEIVED	ENDING BOOK VALUE	MATURITY VALUE	YIELD
<b>CURRENT OPERATING</b>											
TEXPOOL	AAAm	N/A	11,227,181.54	11,227,181.54	2,653,964.22	(6,000,000.00)	7,881,145.76	7,806.60	7,881,145.76	N/A	0.37%
GOVT SECUR-FHLB 06/13/18	AA+	06/13/18	1,049,714.40	1,049,714.40	438.90	0.00	1,050,153.30	2,842.77	1,050,153.30	1,050,000.00	1.79%
GOVT SECUR-FFCB 06.15.16	AA+	06/06/19	0.00	0.00	1,002,400.00	(1,445.00)	1,000,955.00	2,738.01	1,000,955.00	1,000,000.00	1.22%
GOVT SECUR-FHLMC 1/30/18	AA+	01/30/18	998,897.00	998,897.00	1,436.00	0.00	1,000,333.00	2,534.24	1,000,333.00	1,000,000.00	1.01%
GOVT SECUR-FFCB 03/01/21	AA+	03/01/21	997,975.00	997,975.00	3,280.00	0.00	1,001,255.00	6,328.76	1,001,255.00	1,000,000.00	1.65%
GOVT SECUR-FFCB 07.14.16	AA+	07/13/20	0.00	0.00	998,400.00	(1,441.00)	996,959.00	1,564.47	996,959.00	1,000,000.00	1.23%
GOVT SECUR-FHLB 04/13/21	AA+	04/13/21	994,742.00	994,742.00	5,331.00	0.00	1,000,073.00	3,730.41	1,000,073.00	1,000,000.00	1.55%
GOVT SECUR-FNMA 05/30/19	AA+	05/30/19	999,058.00	999,058.00	1,348.00	0.00	1,000,406.00	3,150.68	1,000,406.00	1,000,000.00	1.25%
TOTAL GOVT SECUR			5,040,386.40	5,040,386.40	2,012,633.90	(2,886.00)	7,050,134.30	22,889.34	7,050,134.30	7,050,000.00	1.39%
TOTAL INVESTMENT IN FUND			16,267,567.94	16,267,567.94	4,666,598.12	(6,002,886.00)	14,931,280.06	30,695.94	14,931,280.06	7,050,000.00	0.85%
<b>ENDOWMENT</b>											
TEXPOOL	AAAm	N/A	440,387.33	440,387.33	750,431.59	0.00	1,190,818.92	431.59	1,190,818.92	N/A	0.37%
STOCK-CST BRANDS	BB	N/A	834.46	834.46	217.36	0.00	1,051.82	1.38	1,051.82	N/A	N/A
STOCK-NCR	BB+	N/A	555.84	555.84	53.46	0.00	609.30	0.00	609.30	N/A	N/A
STOCK-TERADATA	Not Rated	N/A	510.12	510.12	61.02	0.00	571.14	0.00	571.14	N/A	N/A
STOCK-Bankamerica Corp(Nations) (Barnett)	BBB+	N/A	3,490.44	3,490.44	318.60	0.00	3,809.04	11.80	3,809.04	N/A	N/A
STOCK-Team Inc	Not Rated	N/A	5,154.40	5,154.40	246.50	0.00	5,400.90	0.00	5,400.90	N/A	N/A
STOCK-VALERO	BBB	N/A	10,940.00	10,940.00	130.00	0.00	11,070.00	240.00	11,070.00	N/A	N/A
STOCK-TENNECO	BB+	N/A	1,128.12	1,128.12	44.31	0.00	1,172.43	0.00	1,172.43	N/A	N/A
STOCK-OCCIDENTAL	A	N/A	38,625.28	38,625.28	721.92	0.00	39,347.20	0.00	39,347.20	N/A	N/A
STOCK-CA RESOURCES CORP	CCC+	N/A	381.52	381.52	0.00	(133.27)	248.25	1.49	248.25	N/A	N/A
STOCK-PG&E	BBB+	N/A	3,304.40	3,304.40	102.30	0.00	3,406.70	0.00	3,406.70	N/A	N/A
STOCK-EXXON/MOBIL	AA+	N/A	17,804.00	17,804.00	0.00	(376.00)	17,428.00	150.00	17,428.00	N/A	N/A
STOCK-TENET HEALTHCARE	B	N/A	983.94	983.94	0.00	(171.34)	812.60	0.00	812.60	N/A	N/A
STOCK-WALMART	AA	N/A	28,312.00	28,312.00	264.00	0.00	28,576.00	200.00	28,576.00	N/A	N/A
STOCK-DUKE ENERGY	A-	N/A	22,608.47	22,608.47	413.27	0.00	23,021.74	238.43	23,021.74	N/A	N/A
STOCK-SPECTRA ENERGY	BBB	N/A	4,906.44	4,906.44	579.04	0.00	5,485.48	62.37	5,485.48	N/A	N/A
STOCK-IBM	AA-	N/A	9,224.40	9,224.40	308.40	0.00	9,532.80	84.00	9,532.80	N/A	N/A
STOCK-APPLE COMPUTER	AA+	N/A	55,921.60	55,921.60	3,494.40	0.00	59,416.00	319.20	59,416.00	N/A	N/A
STOCK-ARKEMA	BBB	N/A	490.44	490.44	44.35	0.00	534.79	0.00	534.79	N/A	N/A
STOCK-TOTAL S.A.	A+	N/A	12,906.34	12,906.34	0.00	(204.84)	12,701.50	128.81	12,701.50	N/A	N/A
TOTAL STOCK			218,082.21	218,082.21	6,998.93	(885.45)	224,195.69	1,437.48	224,195.69	N/A	0.00%
MUTUAL FUND-DREYFUS MDCP INDX	NA	N/A	1,878,888.68	1,878,888.68	96,061.03	0.00	1,974,949.71	0.00	1,974,949.71	N/A	0.00%
MUTUAL FUND-FIDELITY SEL UTIL	NA	N/A	642,023.42	642,023.42	0.00	(2,549.11)	639,474.31	0.00	639,474.31	N/A	0.00%
MUTUAL FUND-FIDELITY SMALL CAP GROV	NA	N/A	635,219.63	635,219.63	52,280.05	0.00	687,499.68	0.00	687,499.68	N/A	0.00%
MUTUAL FUND-VOYA CORP LEAD TRST	NA	N/A	576,625.52	576,625.52	37,301.48	0.00	613,927.00	6,374.46	613,927.00	N/A	4.25%
MUTUAL FUND-VNGRD HI DIV YIELD INDX	NA	N/A	640,724.28	640,724.28	27,118.21	0.00	667,842.49	5,138.64	667,842.49	N/A	3.43%
			4,373,481.53	4,373,481.53	212,760.77	(2,549.11)	4,583,693.19	11,513.10	4,583,693.19	N/A	1.10%
TEXAS SECURITY BANK - CD		07/29/16	242,500.00	242,500.00	0.00	(242,500.00)	0.00	385.34	0.00	242,500.00	1.00%
TOTAL CD			242,500.00	242,500.00	0.00	(242,500.00)	0.00	385.34	0.00	242,500.00	1.00%
GOVT SECUR-FFCB 01/22/18	AA+	01/22/18	998,478.00	998,478.00	1,503.00	0.00	999,981.00	2,382.20	999,981.00	1,000,000.00	0.96%
GOVT SECUR-FHLMC 04/28/2021	AA+	04/28/21	998,953.00	998,953.00	2,475.00	0.00	1,001,428.00	4,284.93	1,001,428.00	1,000,000.00	1.70%
GOVT SECUR-FFCB 03/26/18	AA+	03/26/18	1,198,531.20	1,198,531.20	1,530.00	0.00	1,200,061.20	3,145.64	1,200,061.20	1,200,000.00	1.04%
TOTAL GOVT SECUR			3,195,962.20	3,195,962.20	5,508.00	0.00	3,201,470.20	9,812.77	3,201,470.20	3,200,000.00	1.22%
REAL ESTATE			111,000.00	111,000.00	0.00	0.00	111,000.00	0.00	111,000.00	N/A	N/A
TOTAL INVESTMENT IN FUND			8,581,413.27	8,581,413.27	975,699.29	(245,934.56)	9,311,178.00	23,580.28	9,311,178.00	3,442,500.00	1.04%



FUND	S&P CREDIT RATING	MATURITY DATE	BEGINNING BOOK VALUE	BEGINNING MARKET VALUE	CHANGES		ENDING MARKET VALUE	INCOME ACCRUED OR RECEIVED	ENDING BOOK VALUE	MATURITY VALUE	YIELD
					ADDITIONS	DEDUCTIONS					
<b>PLANT</b>											
TEXPOOL (except Tech Center acct)	AAAm	N/A	3,711,604.59	3,711,604.59	2,949.80	(1,000,000.00)	2,714,554.39	2,949.80	2,714,554.39	N/A	0.37%
GOVT SECUR-FHLB 06/15/16	AA+	06/14/21	0.00	0.00	1,000,201.00	0.00	1,000,201.00	3,416.92	1,000,201.00	1,000,000.00	1.62%
GOVT SECUR-FFCB 10/10/17	AA+	10/10/17	1,003,973.00	1,003,973.00	769.00	0.00	1,004,742.00	2,898.63	1,004,742.00	1,000,000.00	1.04%
GOVT SECUR-FFCB 12/02/19	AA+	12/02/19	1,001,122.00	1,001,122.00	733.00	0.00	1,001,855.00	4,111.24	1,001,855.00	1,000,000.00	1.64%
GOVT SECUR-FHLMC 08/01/19	AA+	08/01/19	1,002,919.00	1,002,919.00	3,372.00	0.00	1,006,291.00	3,167.81	1,006,291.00	1,000,000.00	1.50%
GOVT SECUR-FHLMC 04/30/18	AA+	04/30/18	998,630.00	998,630.00	1,290.00	0.00	999,920.00	2,646.58	999,920.00	1,000,000.00	1.04%
GOVT SECUR-FNMA 03/24/21	AA+	03/24/21	993,266.00	993,266.00	5,781.00	0.00	999,047.00	3,780.82	999,047.00	1,000,000.00	1.50%
GOVT SECUR-FNMA 05/24/19	AA+	05/24/19	998,781.00	998,781.00	2,485.00	0.00	1,001,266.00	3,024.65	1,001,266.00	1,000,000.00	1.20%
GOVT SECUR-FFCB 05/25/21	AA+	05/25/21	996,737.00	996,737.00	4,388.00	0.00	1,001,125.00	4,184.11	1,001,125.00	1,000,000.00	1.66%
GOVT SECUR-FFCB 04/13/20	AA+	04/13/20	996,332.00	996,332.00	3,690.00	0.00	1,000,022.00	3,528.76	1,000,022.00	1,000,000.00	1.40%
GOVT SECUR-FNMA 11/25/20	AA+	11/25/20	1,000,257.00	1,000,257.00	1,064.00	0.00	1,001,321.00	4,536.99	1,001,321.00	1,000,000.00	1.80%
GOVT SECUR-FFCB 07/14/2016	AA+	07/14/21	0.00	0.00	999,330.00	(1,179.00)	998,151.00	1,946.30	998,151.00	1,000,000.00	1.49%
GOVT SECUR-FHLB 04/19/21	AA+	04/19/21	997,709.00	997,709.00	3,375.00	0.00	1,001,084.00	4,095.89	1,001,084.00	1,000,000.00	1.63%
GOVT SECUR-FHLB 02/10/20	AA+	02/10/20	996,084.00	996,084.00	4,145.00	0.00	1,000,229.00	3,471.92	1,000,229.00	1,000,000.00	1.37%
GOVT SECUR-FHLB 10/28/20	AA+	10/28/20	997,338.00	997,338.00	3,996.00	0.00	1,001,334.00	4,335.34	1,001,334.00	1,000,000.00	1.74%
GOVT SECUR-FFCB 10/19/18	AA+	10/19/18	997,922.00	997,922.00	1,477.00	0.00	999,399.00	2,696.99	999,399.00	1,000,000.00	1.09%
GOVT SECUR-FNMA 02/24/21	AA+	02/24/21	999,389.00	999,389.00	3,067.00	0.00	1,002,456.00	4,053.58	1,002,456.00	1,000,000.00	1.60%
GOVT SECUR-FHLB 10/19/20	AA+	10/19/20	998,821.00	998,821.00	4,846.00	0.00	1,003,667.00	4,284.94	1,003,667.00	1,000,000.00	1.70%
GOVT SECUR-FNMA 12/20/17	AA+	12/20/17	999,691.00	999,691.00	1,154.00	0.00	1,000,845.00	2,193.50	1,000,845.00	1,000,000.00	1.08%
<b>TOTAL GOVT SECURITIES</b>			<b>15,978,971.00</b>	<b>15,978,971.00</b>	<b>2,045,163.00</b>	<b>(1,001,179.00)</b>	<b>18,022,955.00</b>	<b>62,374.97</b>	<b>18,022,955.00</b>	<b>18,000,000.00</b>	<b>1.45%</b>
STOCK- HEWLETT PACKARD	BBB	N/A	1,057.02	1,057.02	78.21	0.00	1,135.23	0.00	1,135.23	N/A	N/A
STOCK- HEWLETT PACKARD	BBB	N/A	1,459.13	1,459.13	237.79	0.00	1,696.92	0.00	1,696.92	N/A	N/A
STOCK- COCA COLA	BBB	N/A	1,516.40	1,516.40	0.00	(39.78)	1,476.62	11.90	1,476.62	N/A	N/A
STOCK- DEVON ENERGY	BBB	N/A	20,932.20	20,932.20	4,199.20	0.00	25,131.40	34.80	25,131.40	N/A	N/A
<b>TOTAL STOCK</b>			<b>24,964.75</b>	<b>24,964.75</b>	<b>4,515.20</b>	<b>(39.78)</b>	<b>29,440.17</b>	<b>46.70</b>	<b>29,440.17</b>	<b>N/A</b>	<b>N/A</b>
<b>TOTAL INVESTMENT IN FUND</b>			<b>19,715,540.34</b>	<b>19,715,540.34</b>	<b>2,052,628.00</b>	<b>(2,001,218.78)</b>	<b>20,766,949.56</b>	<b>65,371.47</b>	<b>20,766,949.56</b>	<b>18,000,000.00</b>	<b>1.31%</b>
<b>BOND</b>											
<b>TOTAL INVESTMENT IN FUND</b>	0.00	N/A	0.00	0.00	0.00	0.00	0.00	0.00	0.00	N/A	
<b>AUXILIARY</b>											
TEXPOOL	AAAm	N/A	698,234.75	698,234.75	649.10	0.00	698,883.85	649.10	698,883.85	N/A	0.37%
<b>SCHOLARSHIP</b>											
TEXPOOL	AAAm	N/A	598,104.42	598,104.42	556.06	0.00	598,660.48	556.06	598,660.48	N/A	0.37%
<b>AGENCY</b>											
TEXPOOL	AAAm	N/A	103,179.80	103,179.80	95.91	0.00	103,275.71	95.91	103,275.71	N/A	0.37%
<b>RESTRICTED</b>											
TEXPOOL	AAAm	N/A	186,555.10	186,555.10	46,068.65	(150,000.00)	82,623.75	85.65	82,623.75	N/A	0.37%
<b>TOTAL STOCKS</b>			<b>243,046.96</b>	<b>243,046.96</b>	<b>11,514.13</b>	<b>(925.23)</b>	<b>253,635.86</b>	<b>1,484.18</b>	<b>253,635.86</b>	<b>N/A</b>	<b>0.00%</b>
<b>TOTAL MUTUAL FUNDS</b>			<b>4,373,481.53</b>	<b>4,373,481.53</b>	<b>212,760.77</b>	<b>(2,549.11)</b>	<b>4,583,693.19</b>	<b>11,513.10</b>	<b>4,583,693.19</b>	<b>N/A</b>	<b>1.10%</b>
<b>TOTAL GOVT SECURITIES</b>			<b>24,215,319.60</b>	<b>24,215,319.60</b>	<b>4,063,304.90</b>	<b>(1,004,065.00)</b>	<b>28,274,559.50</b>	<b>95,077.08</b>	<b>28,274,559.50</b>	<b>28,250,000.00</b>	<b>1.41%</b>
<b>TOTAL CD'S</b>			<b>242,500.00</b>	<b>242,500.00</b>	<b>0.00</b>	<b>(242,500.00)</b>	<b>0.00</b>	<b>385.34</b>	<b>0.00</b>	<b>242,500.00</b>	<b>1.00%</b>
<b>TOTAL TEXPOOL</b>			<b>16,965,247.53</b>	<b>16,965,247.53</b>	<b>3,454,715.33</b>	<b>(7,150,000.00)</b>	<b>13,269,962.86</b>	<b>12,574.71</b>	<b>13,269,962.86</b>	<b>N/A</b>	<b>0.37%</b>
<b>TOTAL MONEY MARKET</b>			<b>(0.00)</b>	<b>(0.00)</b>	<b>0.00</b>	<b>0.00</b>	<b>(0.00)</b>	<b>0.00</b>	<b>(0.00)</b>	<b>N/A</b>	<b>0.00%</b>
<b>TOTAL REAL ESTATE</b>			<b>111,000.00</b>	<b>111,000.00</b>	<b>0.00</b>	<b>0.00</b>	<b>111,000.00</b>	<b>0.00</b>	<b>111,000.00</b>	<b>N/A</b>	<b>N/A</b>
<b>TOTAL ALL INVESTMENTS</b>			<b>46,150,595.62</b>	<b>46,150,595.62</b>	<b>7,742,295.13</b>	<b>(8,400,039.34)</b>	<b>46,492,851.41</b>	<b>121,034.41</b>	<b>46,492,851.41</b>	<b>N/A</b>	<b>1.08%</b>



**Wharton County Junior College**  
 911 Boling Highway • Wharton, Texas 77488 • (979) 532-4560

## INVESTMENT REPORT FOR THE FOURTH QUARTER FISCAL YEAR 2016

Period includes 06/01/16 - 08/31/16

FUND/INVESTMENT	BEGINNING	CHANGES		ENDING	ENDING	PREVIOUS	INCOME		YIELD
	MARKET	ADDITIONS	DEDUCTIONS	MARKET	BOOK	YEAR - ENDING	TYPE	ACCRUED / RECEIVED	
	VALUE			VALUE	VALUE	BOOK VALUE F/Y 15			
<b>CURRENT OPERATING</b>									
INVESTMENT IN TEXPOOL	11,227,181.54	2,653,964.22	(6,000,000.00)	7,881,145.76	7,881,145.76	8,475,704.75	INTEREST	7,806.60	0.37%
INVESTMENT IN GOVERNMENT SECURITIES	5,040,386.40	2,012,633.90	(2,886.00)	7,050,134.30	7,050,134.30	7,030,685.05	INTEREST	22,889.34	1.39%
TOTAL INVESTMENT IN FUND	16,267,567.94	4,666,598.12	(6,002,886.00)	14,931,280.06	14,931,280.06	15,506,389.80		30,695.94	0.85%
WEIGHTED AVERAGE MATURITY OPERATING FUNDS (DAYS)	379.23								
<b>ENDOWMENT</b>									
INVESTMENT IN TEXPOOL	440,387.33	750,431.59	0.00	1,190,818.92	1,190,818.92	439,634.23	INTEREST	431.59	0.37%
FIDELITY - MONEY MARKET	(0.00)	0.00	0.00	(0.00)	(0.00)	2.71	INTEREST	0.00	0.00%
INVESTMENT IN CD	242,500.00	0.00	(242,500.00)	0.00	0.00	242,500.00	INTEREST	385.34	1.00%
INVESTMENT IN GOVERNMENT SECURITIES	3,195,962.20	5,508.00	0.00	3,201,470.20	3,201,470.20	3,191,467.20	INTEREST	9,812.77	1.22%
INVESTMENT IN STOCKS	218,082.21	6,998.93	(885.45)	224,195.69	224,195.69	216,686.30	DIVIDENDS	1,437.48	0.00%
INVESTMENT IN MUTUAL FUNDS	4,373,481.53	212,760.77	(2,549.11)	4,583,693.19	4,583,693.19	4,080,118.93	DIVIDENDS	11,513.10	1.10%
INVESTMENT IN REAL ESTATE	111,000.00	0.00	0.00	111,000.00	111,000.00	111,000.00	LEASE	0.00	
TOTAL INVESTMENT IN FUND	8,581,413.27	975,699.29	(245,934.56)	9,311,178.00	9,311,178.00	8,281,409.37		23,580.28	1.04%
WEIGHTED AVERAGE MATURITY ENDOWMENT FUND (DAYS)	637.23								
<b>PLANT</b>									
INVESTMENT IN TEXPOOL (Excluding Tech Center)	3,711,604.59	2,949.80	(1,000,000.00)	2,714,554.39	2,714,554.39	2,203,251.44	INTEREST	2,949.80	0.37%
INVESTMENT IN TEXPOOL-Tech Center	0.00	0.00	0.00	0.00	0.00	0.00	INTEREST	0.00	
INVESTMENT IN CD	0.00	0.00	0.00	0.00	0.00	0.00	INTEREST	0.00	
INVESTMENT IN GOVERNMENT SECURITIES	15,978,971.00	2,045,163.00	(1,001,179.00)	18,022,955.00	18,022,955.00	11,184,600.57	INTEREST	62,374.97	1.45%
INVESTMENT IN STOCKS	24,964.75	4,515.20	(39.78)	29,440.17	29,440.17	28,296.42	DIVIDENDS	46.70	
TOTAL INVESTMENT IN FUND	19,715,540.34	2,052,628.00	(2,001,218.78)	20,766,949.56	20,766,949.56	13,416,148.43		65,371.47	1.31%

14

FUND/INVESTMENT	BEGINNING	CHANGES		ENDING	ENDING	PREVIOUS	INCOME		YIELD
	MARKET	ADDITIONS	DEDUCTIONS	MARKET	BOOK	YEAR - ENDING	ACCRUED /	RECEIVED	
	VALUE			VALUE	VALUE	BOOK VALUE FY 15	TYPE		
<b>BOND</b>									
TOTAL INVESTMENT IN FUND	0.00	0.00	0.00	0.00	0.00	0.00		0.00	
WEIGHTED AVERAGE MATURITY PLANT & BOND FUNDS (DAYS)	1,057.90								
<b>AGENCY</b>									
INVESTMENT IN TEXPOOL	103,179.80	95.91	0.00	103,275.71	103,275.71	103,003.36	INTEREST	95.91	0.37%
TOTAL INVESTMENT IN FUND	103,179.80	95.91	0.00	103,275.71	103,275.71	103,003.36		95.91	0.37%
<b>AUXILIARY</b>									
INVESTMENT IN TEXPOOL	698,234.75	649.10	0.00	698,883.85	698,883.85	697,040.83	INTEREST	649.10	0.37%
TOTAL INVESTMENT IN FUND	698,234.75	649.10	0.00	698,883.85	698,883.85	697,040.83		649.10	0.37%
<b>SCHOLARSHIP</b>									
INVESTMENT IN TEXPOOL	598,104.42	556.06	0.00	598,660.48	598,660.48	402,332.39	INTEREST	556.06	0.37%
TOTAL INVESTMENT IN FUND	598,104.42	556.06	0.00	598,660.48	598,660.48	402,332.39		556.06	0.37%
<b>RESTRICTED</b>									
INVESTMENT IN TEXPOOL	186,555.10	46,068.65	(150,000.00)	82,623.75	82,623.75	226,832.66	INTEREST	85.65	0.37%
TOTAL INVESTMENT IN FUND	186,555.10	46,068.65	(150,000.00)	82,623.75	82,623.75	226,832.66		85.65	0.37%

	This period		Previous year	
TOTAL	46,492,851.41	46,492,851.41	38,633,156.84	TOTAL 121,034.41 1.08%
stocks	253,635.86	253,635.86	244,982.72	stocks 1,484.18
mutual funds	4,583,693.19	4,583,693.19	4,080,118.93	mutual funds 11,513.10
govt sec	28,274,559.50	28,274,559.50	21,406,752.82	govt sec 95,077.08
CD's	0.00	0.00	242,500.00	CD's 385.34
Texpool	13,269,962.86	13,269,962.86	12,547,799.66	Texpool 12,574.71
Money Market	(0.00)	(0.00)	2.71	Prosperity Accol 0.00
Real Estate	111,000.00	111,000.00	111,000.00	Real Estate 0.00
	46,492,851.41	46,492,851.41	38,633,156.84	121,034.41

Wharton County Junior College					
Investment Weighted Average Maturity					
For Quarter Ending August 31, 2016					
INVESTMENT DESCRIPTION	PURCHASE DATE	MATURITY DATE	MATURITY VALUE	DAYS TO MATURITY	WAM (DAYS)
<b>OPERATING FUNDS</b>					
CASH			13,956,950.02	1	0.66
GOVT SECUR-FFCB 3133EFF28	3/1/2016	3/1/2021	1,000,000.00	1,643	78.21
GOVT SECUR-FHLMC 3134G34K3	1/30/2013	1/30/2018	1,000,000.00	517	24.61
GOVT SECUR-FHLB 313383A68	7/1/2013	6/13/2018	1,050,000.00	651	32.54
GOVT SECUR-FHLB 3130A7Q81	4/29/2016	4/13/2021	1,000,000.00	1,686	80.26
GOVT SECUR-FFCB 3133EGLB9	7/14/2016	7/13/2020	1,000,000.00	1,412	67.22
GOVT SECUR-FFCB 3133EGCZ6	6/15/2016	6/6/2019	1,000,000.00	1,009	48.03
GOVT SECUR-FNMA 3136G3QZ1	5/27/2016	5/30/2019	1,000,000.00	1,002	47.70
			21,006,950.02		
<b>WEIGHTED AVERAGE MATURITY DAYS-OPERATING FUNDS</b>					<b>379.23</b>
<b>ENDOWMENT FUNDS</b>					
CASH			1,347,435.43	1	0.30
GOVT SECUR-FFCB 3133ECDE1	1/23/2013	1/22/2018	1,000,000.00	509	111.93
GOVT SECUR-FFCB 3133ECJX3	4/18/2013	3/26/2018	1,200,000.00	572	150.94
GOVT SECUR-FHLMC 3134G8YR4	4/28/2016	4/28/2021	1,000,000.00	1,701	374.06
TOTAL ENDOWMENT			4,547,435.43		
<b>WEIGHTED AVERAGE MATURITY DAYS ENDOWMENT FUNDS</b>					<b>637.23</b>
<b>PLANT AND BONDS FUNDS</b>					
CASH			3,669,989.84	1	0.17
GOVT SECUR-FFCB 3133EFJE8	10/19/2015	10/19/2018	1,000,000.00	779	35.95
GOVT SECUR-FHLB 3130A6LQ8	10/19/2015	10/19/2020	1,000,000.00	1,510	69.68
GOVT SECUR-FHLMC 3137EADK2	11/25/2015	8/1/2019	1,000,000.00	1,065	49.15
GOVT SECUR-FNMA 3136G2TB3	11/25/2015	11/25/2020	1,000,000.00	1,547	71.39
GOVT SECUR-FHLB 3130A6MH7	11/2/2015	10/28/2020	1,000,000.00	1,519	70.10
GOVT SECUR-FNMA 3136G3CM5	3/24/2016	3/24/2021	1,000,000.00	1,666	76.88
GOVT SECUR-FNMA 3136G3MC6	5/24/2016	5/24/2019	1,000,000.00	996	45.96
GOVT SECUR-FNMA 3136G2XN2	2/26/2016	2/24/2021	1,000,000.00	1,638	75.59
GOVT SECUR-FFCB 3133EGBZ7	5/25/2016	5/25/2021	1,000,000.00	1,728	79.74
GOVT SECUR-FFCB 3133EDXA5	11/7/2014	10/10/2017	1,000,000.00	405	18.69
GOVT SECUR-FNMA 3135G0RT2	11/7/2014	12/20/2017	1,000,000.00	476	21.97
GOVT SECUR-FHLB 3130A7A70	2/10/2016	2/10/2020	1,000,000.00	1,258	58.05
GOVT SECUR-FFCB 3133EFRM1	12/2/2015	12/2/2019	1,000,000.00	1,188	54.82
GOVT SECUR-FFCB 3133EF2L0	4/13/2016	4/13/2020	1,000,000.00	1,321	60.96
GOVT SECUR-FHLB 3130A7RL1	4/19/2016	4/19/2021	1,000,000.00	1,692	78.08
GOVT SECUR-FHLB 3130A8FC2	6/15/2016	6/14/2021	1,000,000.00	1,748	80.66
GOVT SECUR-FFCB 3133EGLU7	7/14/2016	7/14/2021	1,000,000.00	1,778	82.05
GOVT SECUR-FHLMC 3134G42G2	4/30/2013	4/30/2018	1,000,000.00	607	28.01
TOTAL PLANT			21,669,989.84		
<b>WEIGHTED AVERAGE MATURITY DAYS PLANT AND BOND FUNDS</b>					<b>1057.90</b>

WEIGHTED AVERAGE MATURITY FUND