

# A-F LETTER GRADES

## A REVIEW OF THE A-F LETTER GRADE SYSTEM AND AMPHI DATA

Jason Weaver  
Program Evaluation and Data Analyst  
Office of Learning and Instruction

# A-F Letter Grades



Review the key components and calculations of the A-F letter grade system.



Review District Letter Grades



Review State Assessment Achievement Data



# State Assessment: Proficiency Levels for Students



## Highly Proficient (Level 4)

- ✓ Advanced understanding, highly likely to be ready (for the next grade level).

## Proficient (Level 3)

- ✓ Strong understanding, likely to be ready (for the next grade level).

## Partially Proficient (Level 2)

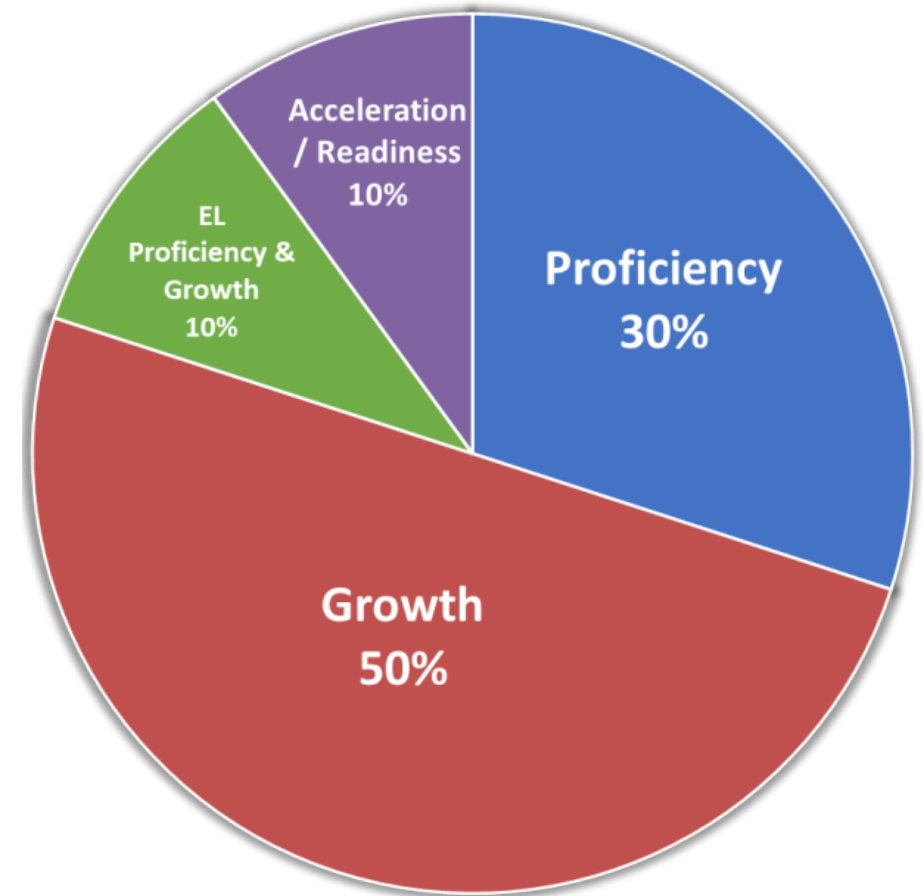
- ✓ Partial understanding, likely to need support to be ready (for the next grade level).

## Minimally Proficient (Level 1)

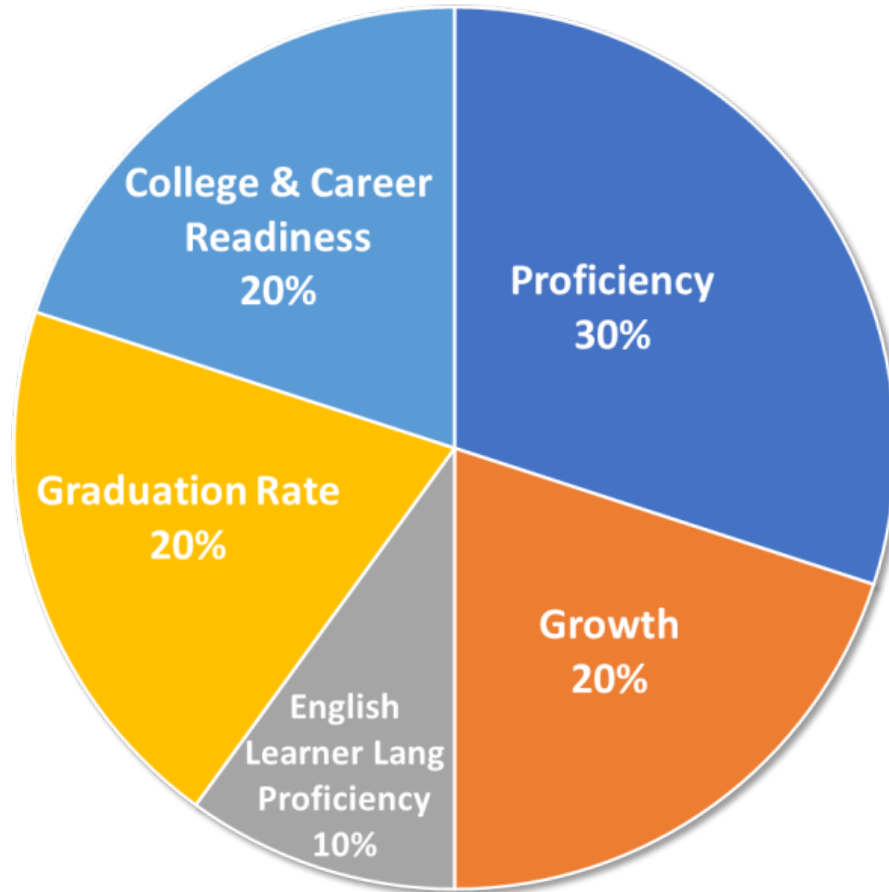
- ✓ Minimal understanding, highly likely to need support to be ready (for the next grade level).

# A-F Letter Grades: K-8 Structure

- ✓ Percentage of **proficient** students on the AASA grade level assessment (grades 3-8)
- ✓ Longitudinal indicators of relative student **growth**
- ✓ English Learner language **proficiency** and **growth** (grades K-8)
- ✓ Indicators to measure students' ability to **accelerate** beyond elementary school



# A-F Letter Grades: High Schools



- ✓ Percentage of **proficient** students on the state administered ACT (grade 11)
- ✓ Longitudinal indicators of relative student gain and **growth**
- ✓ English Learner language **proficiency** and **growth** (grades 9-12)
- ✓ College and Career Readiness Indicators
- ✓ Graduation rate



# 2024-2025 Letter Grades and State Assessment Data



# A-F Letter Grade Definitions

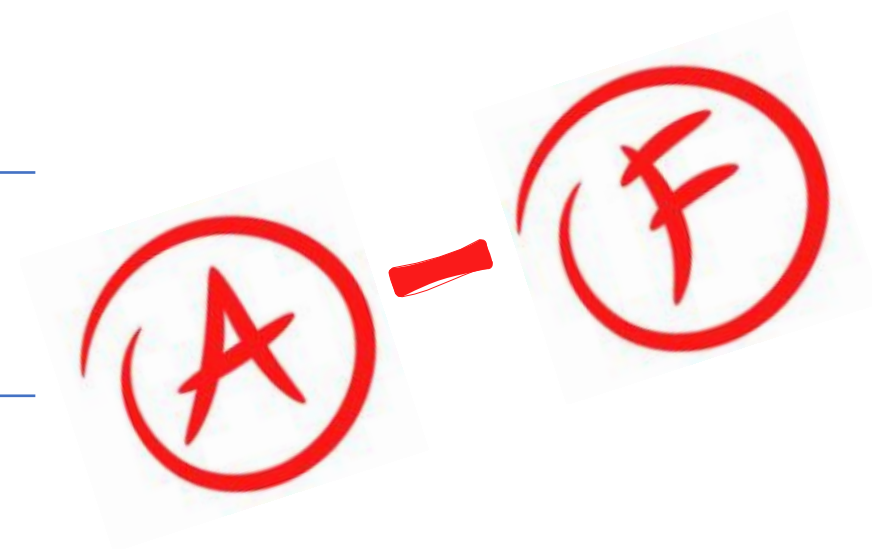
**A** - Excellent

**B** - Highly Performing

**C** - Adequately Performing

**D** - Minimally Performing

**F** - Failing





## 2024-2025 School Year

## Letter Grade

Amphi Academy Online	B
Amphitheater High School	B
Amphitheater Middle School	C
Canyon del Oro High School	A
Copper Creek Elementary	A
Coronado K-8 School	B
Cross Middle School	A
Donaldson Elementary	A
Harelson Elementary	A
Holaway Elementary	C
Innovation Academy	A
Ironwood Ridge High School	A
Keeling Elementary	A
La Cima Middle School	B
Mesa Verde Elementary	A
Nash Elementary	C
Painted Sky Elementary	A
Prince Elementary	C
Rio Vista Elementary	C
Walker Elementary	B
Wilson K-8 School	A



**A** - Excellent

**B** - Highly Performing

**C** - Adequately Performing

**D** - Minimally Performing

**F** - Failing





# Areas/Strengths Contributing to Strong A-F Performances

---

**Keeling Elementary**- Continued to improve in both Proficiency and Growth receiving an “A” rating – the first such rating in recent memory.

---

**Amphitheater High School** – Improved from a “C” to a “B” rating.

---

**Donaldson Elementary** – Showed significant improvement in growth and moved from a “D” rating to an “A” rating.

---

**La Cima Middle School** – Improved in both Proficiency and Growth. Moved from a “C” to a “B” rating.

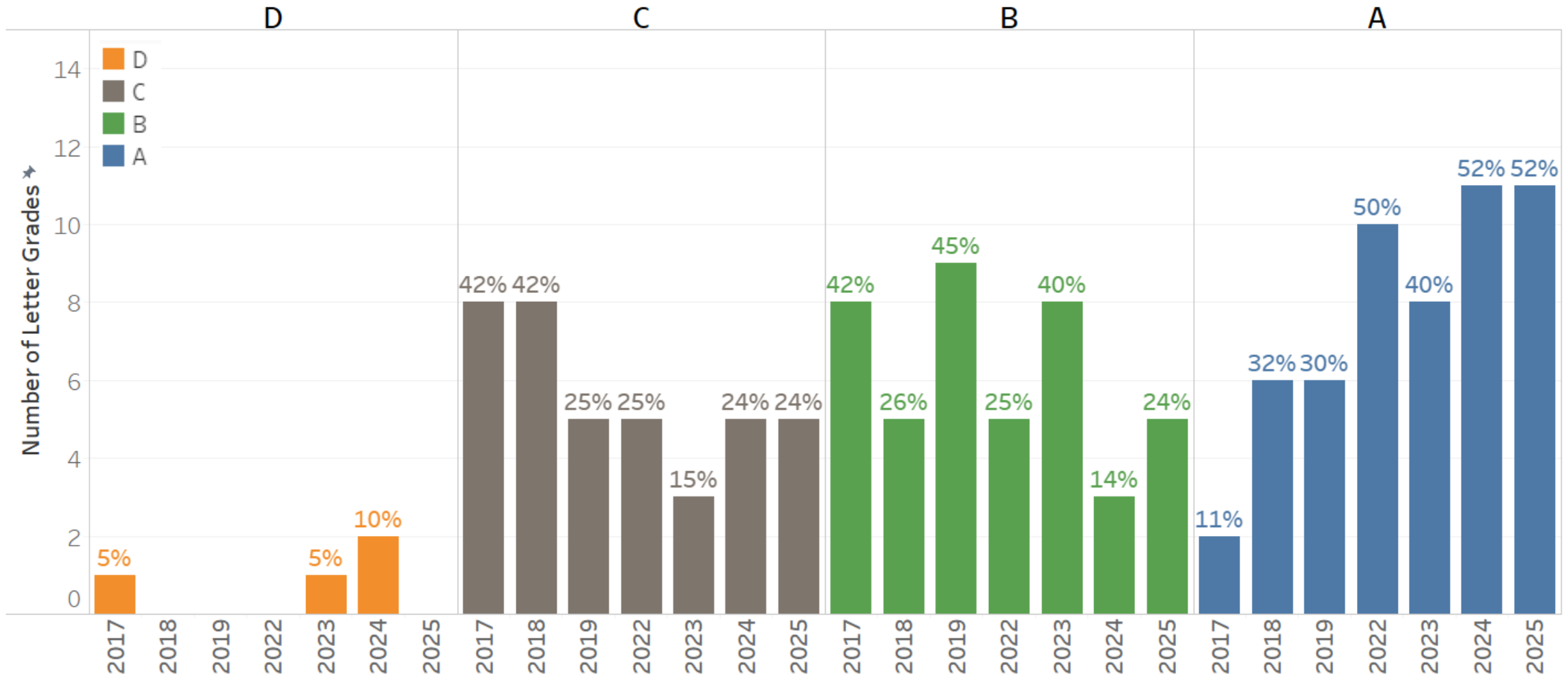
---

**Nash Elementary School** – Improved from a “D” to a “C” rating.



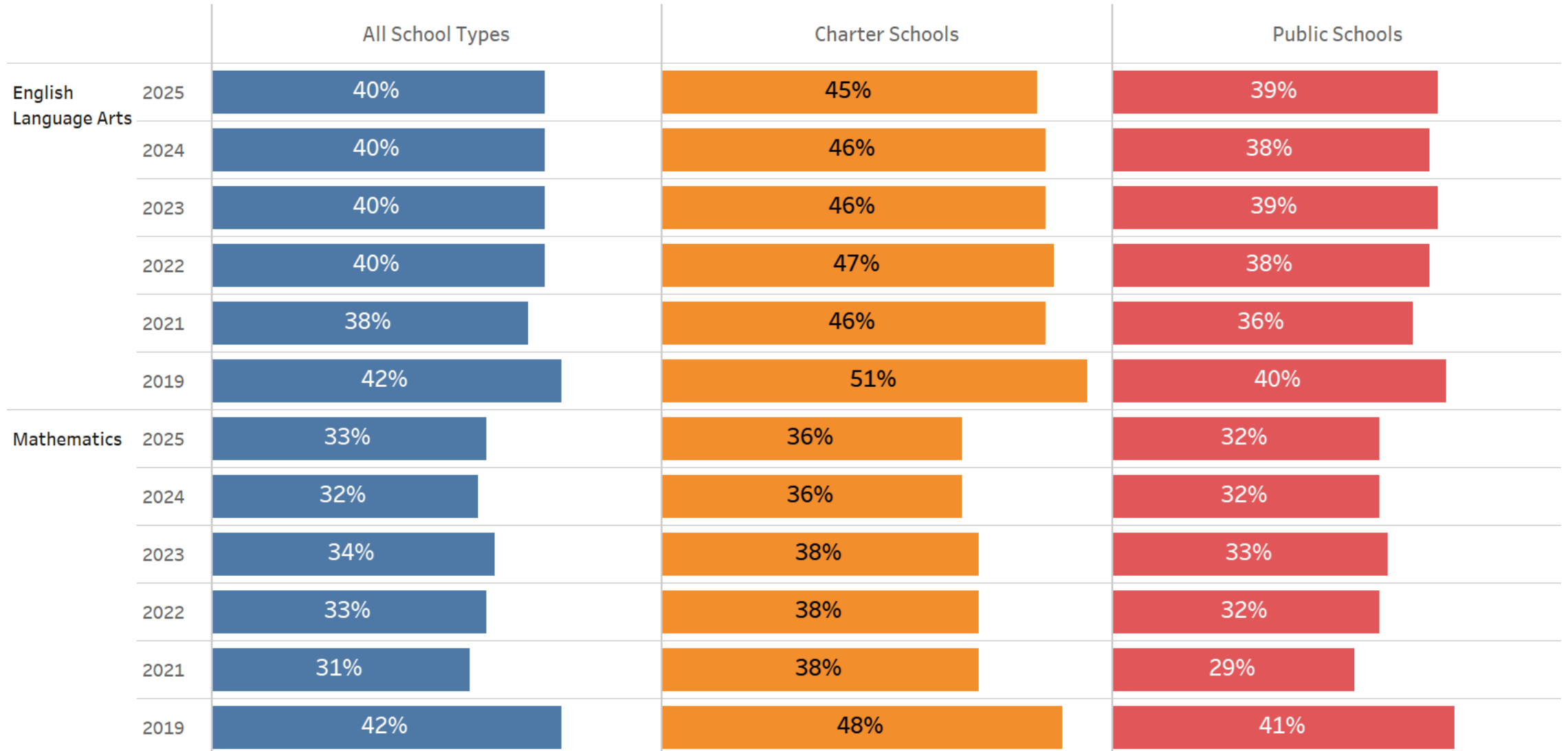
# Amphi Letter Grades: Trends

Amphi District - Number & Percent of Letter Grades by Year





# Arizona State Proficiency Rates



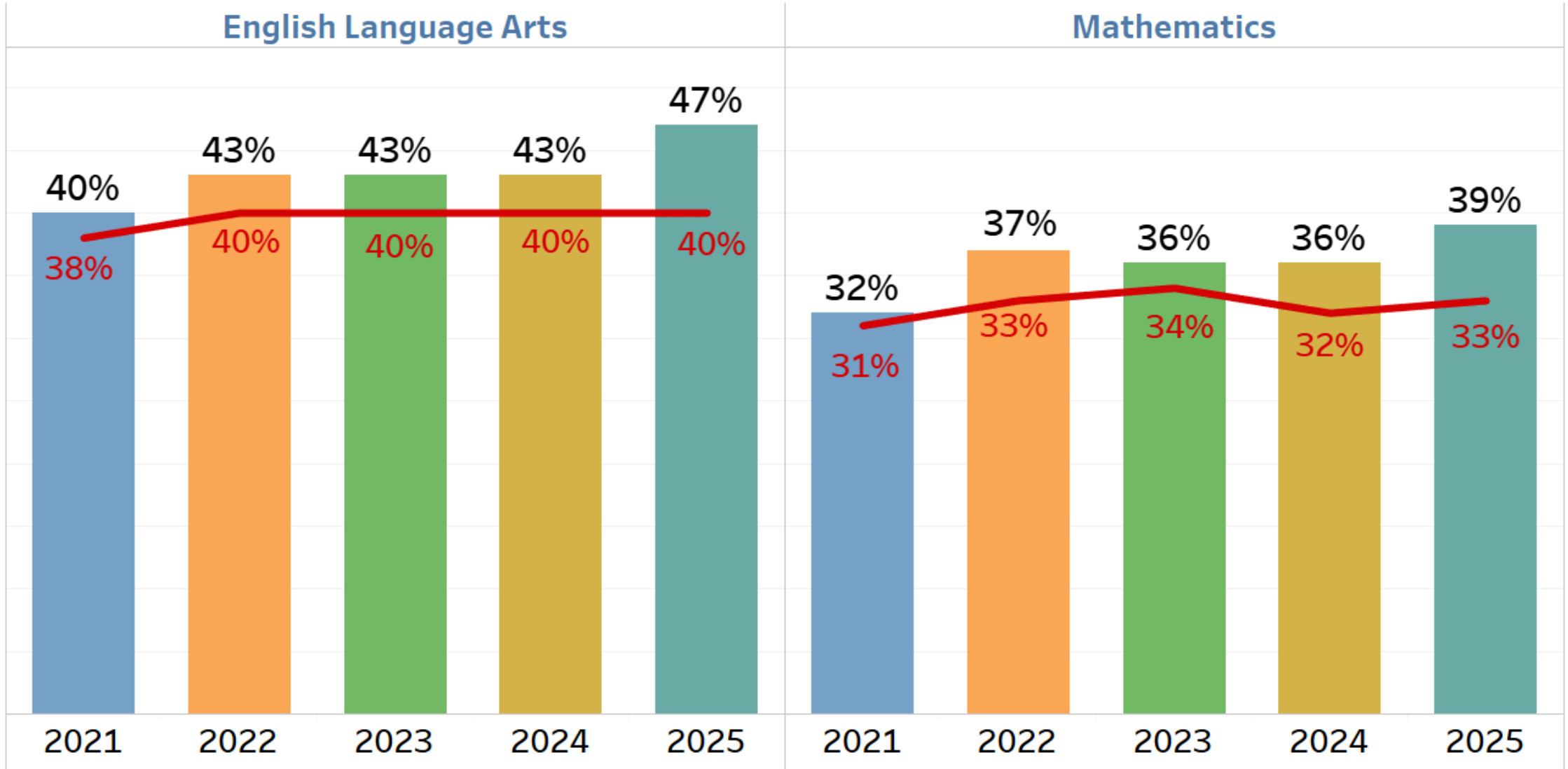


# Amphi Proficiency Rates – State Proficiency



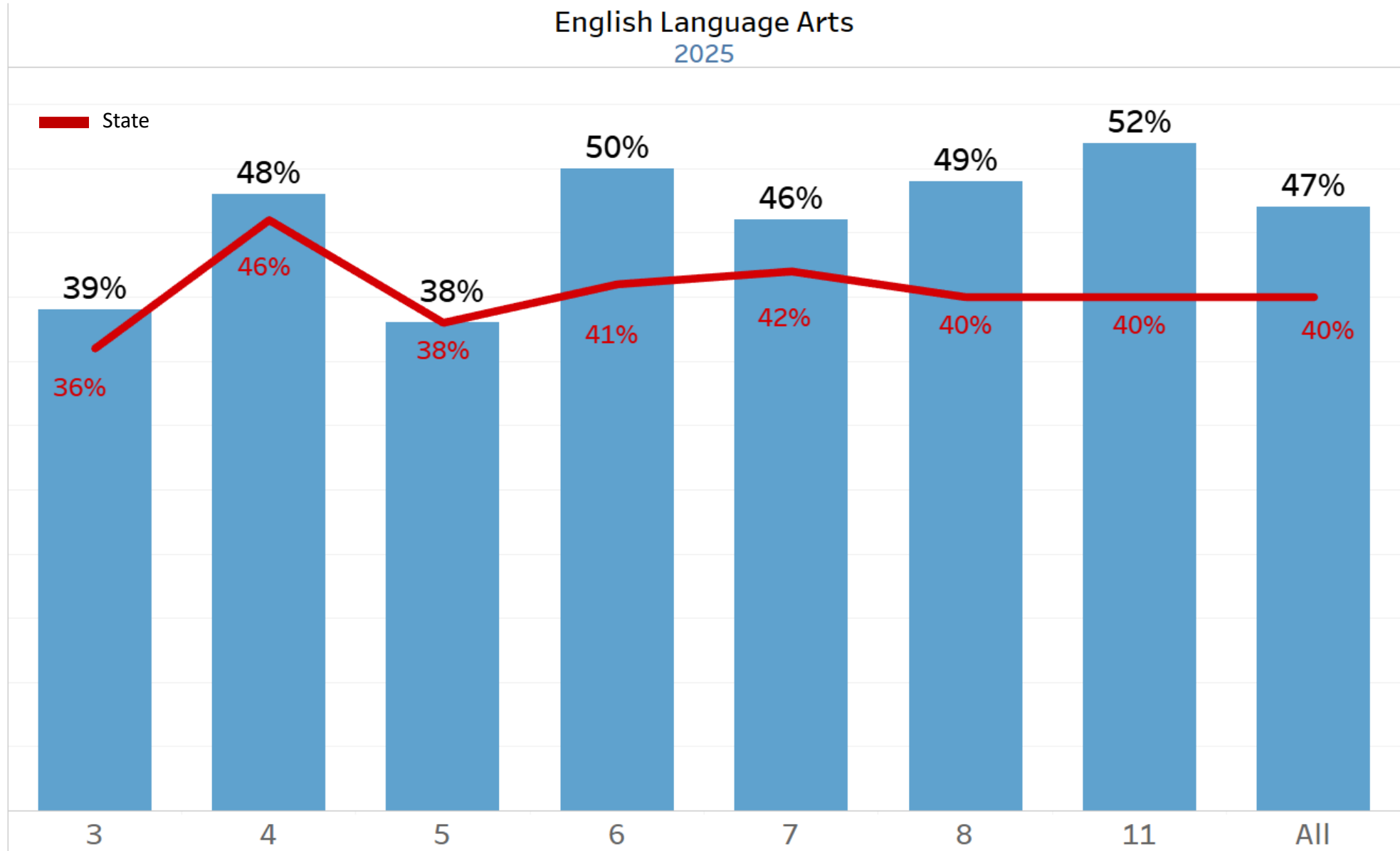
### English Language Arts

### Mathematics



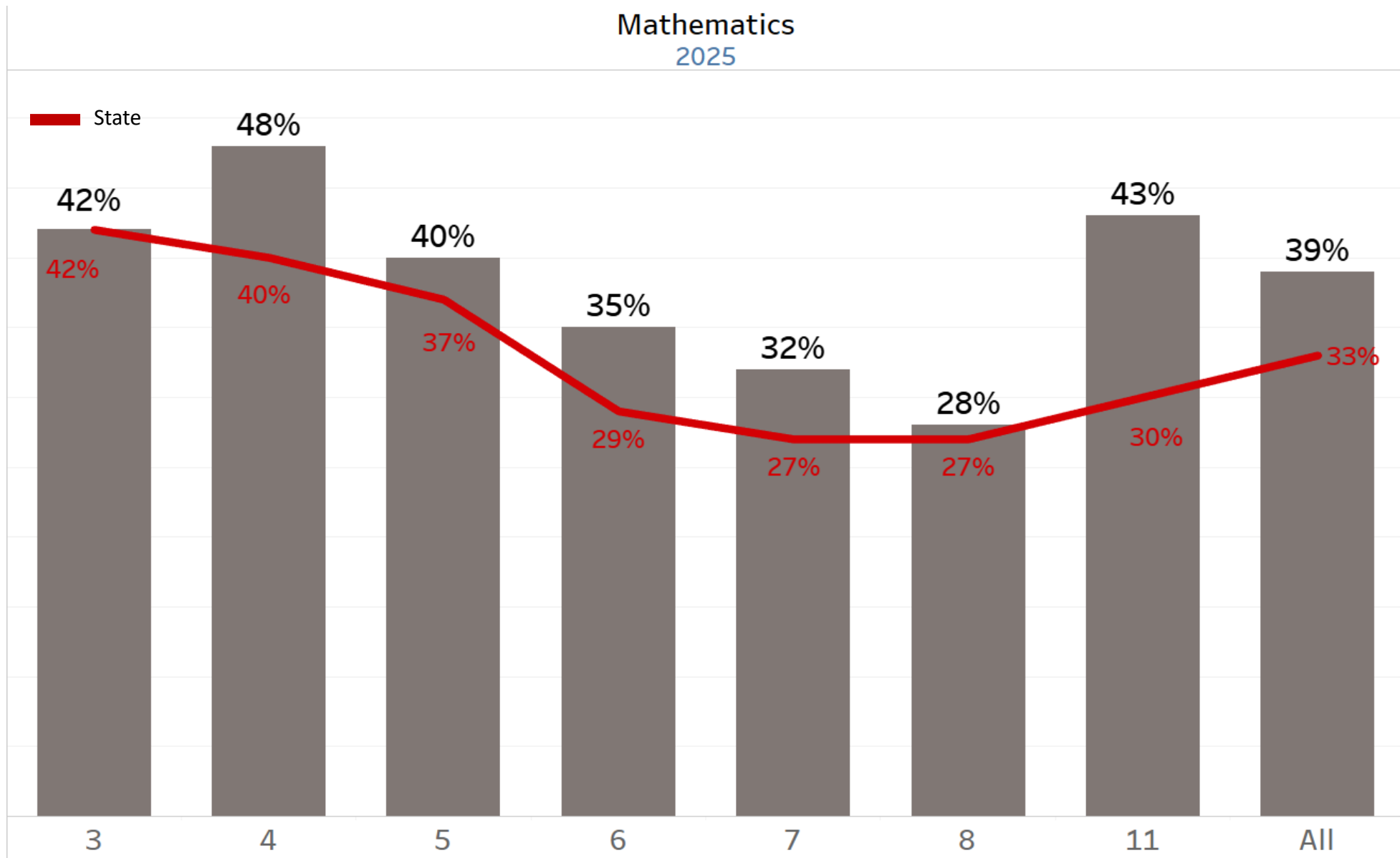


# English Language Arts Proficiency – Grade Level



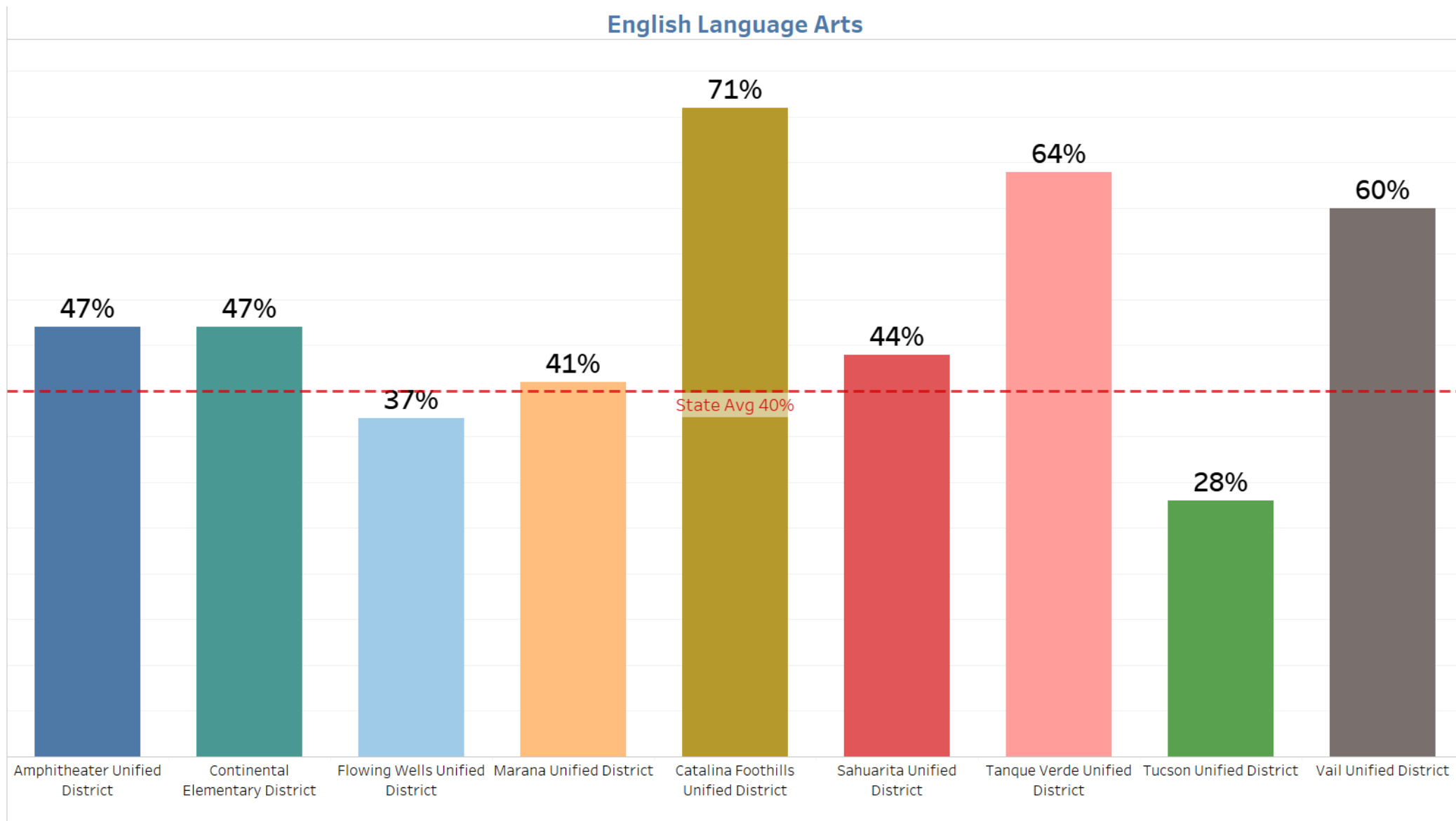


# Mathematics Proficiency – Grade Level



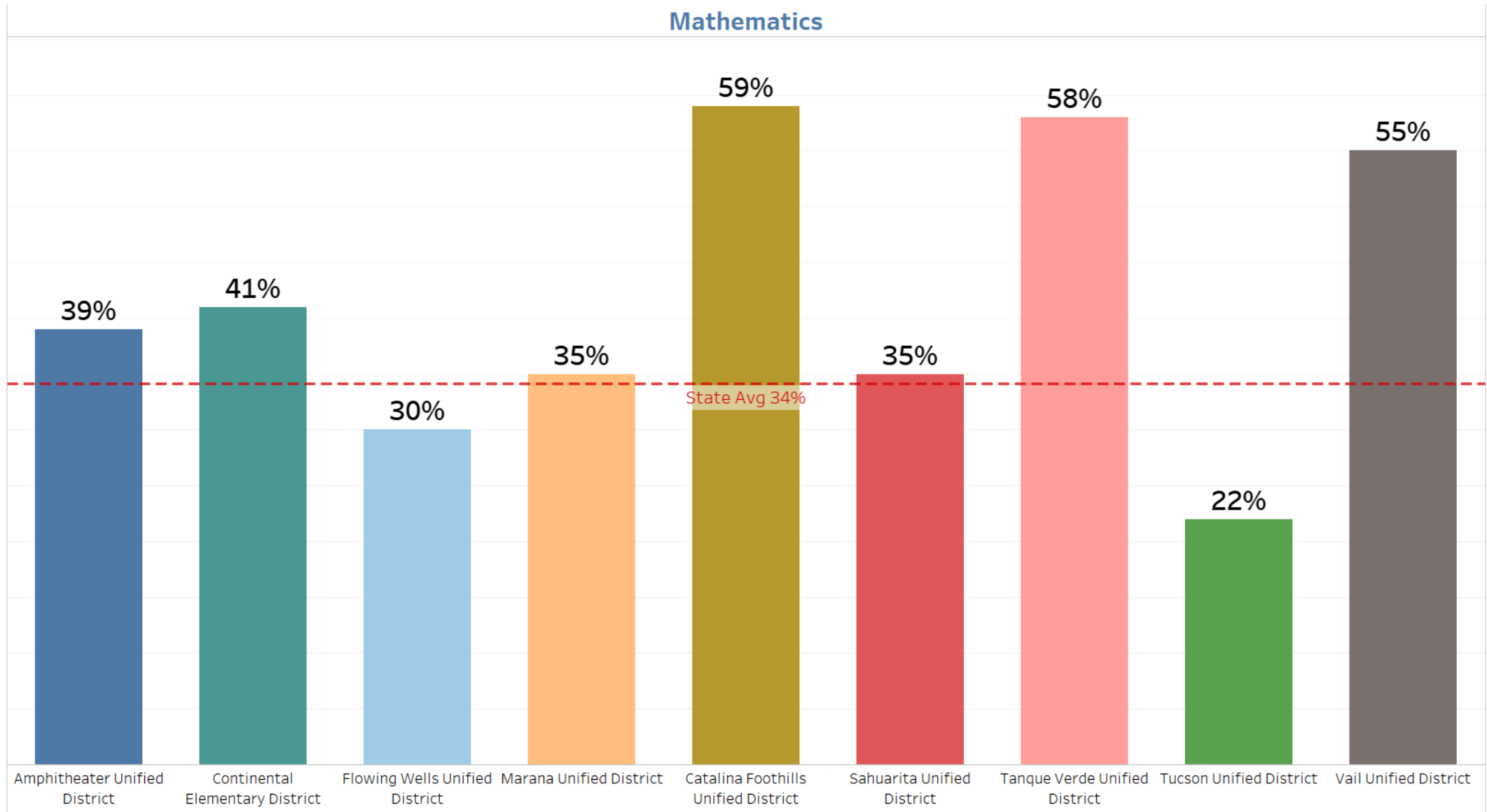


# District Proficiency Rates in Southern Arizona





# District Proficiency Rates in Southern Arizona







# Amphi School Proficiency Rates

	English Language Arts	Mathematics
Amphi Academy Online	28%	17%
Amphitheater High School	16%	9%
Amphitheater Middle School	21%	8%
Canyon Del Oro High School	68%	63%
Copper Creek Elementary School	41%	45%
Coronado K-8 School	39%	29%
E C Nash School	10%	8%
Frances Owen Holaway Elementary School	17%	17%
Helen Keeling Elementary School	31%	29%
Ironwood Ridge High School	59%	46%
L M Prince School	14%	21%
La Cima Middle School	31%	13%
Lawrence W Cross Middle School	62%	44%
Lulu Walker School	39%	45%
Marion Donaldson Elementary School	34%	32%
Mesa Verde Elementary School	45%	49%
Painted Sky Elementary School	69%	71%
Richard B Wilson Jr School	66%	53%
Rio Vista Elementary School	24%	30%
The Innovation Academy	66%	67%
Winifred Harelson Elementary School	61%	59%

# Next Steps



Guaranteed & Viable Curriculum



Personalized Learning and  
Instructional Best Practice



Data, Assessment, and Professional  
Learning Communities



# Questions?

