



**RIVERSIDE COUNTY
OFFICE OF EDUCATION**

EDWIN GOMEZ, Ed.D. | County Superintendent of Schools

Division of Early Education Services
Early Care and Education
Program Updates

January 22, 2025

First 5 Riverside County, Children and Families Commission

Jennifer Beggs, Executive Director





Division of Early Education Services
Early Care and Education



RIVERSIDE COUNTY

Early Care and Education

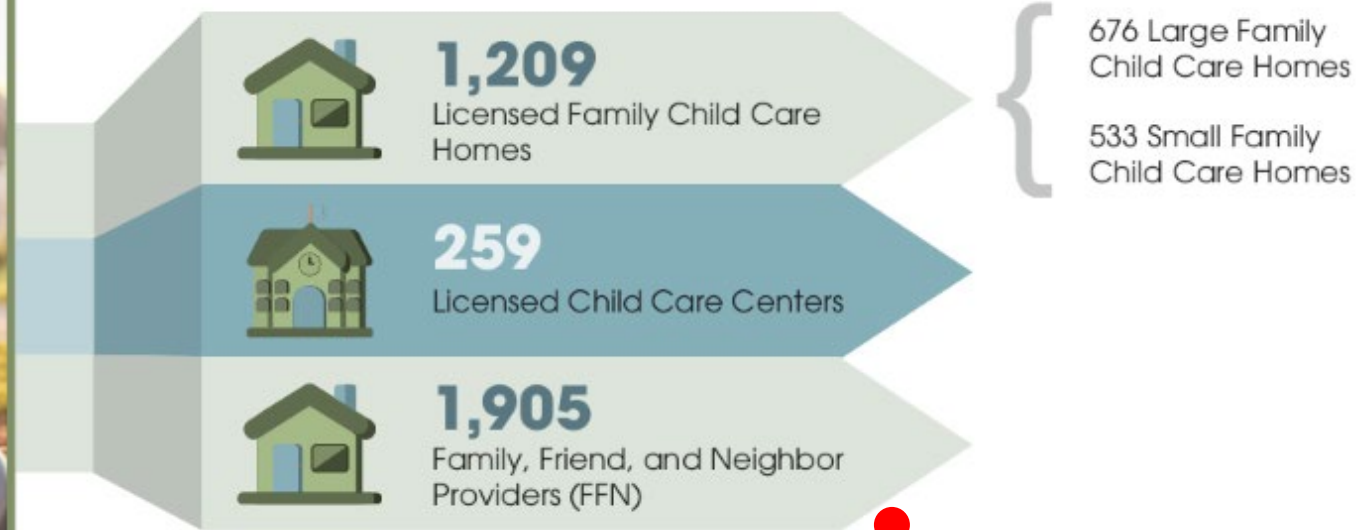
*Annual
Report*

2023-2024





ECE provides child care and development services for Riverside County families by helping parents locate licensed child care and community resources, assisting low-income families with child care costs, and providing access to resources to support the quality and capacity of our child care providers.



Support for foster youth and their families and caregivers through resources and emergency care

22,288

Children and family service outreach efforts in 23/24 FY

UPK (Universal PreKindergarten) support and information

Partnerships with First 5 Riverside County, Dept. of Public Social Services (DPSS), and CSU San Bernardino (CSUSB)

39,065

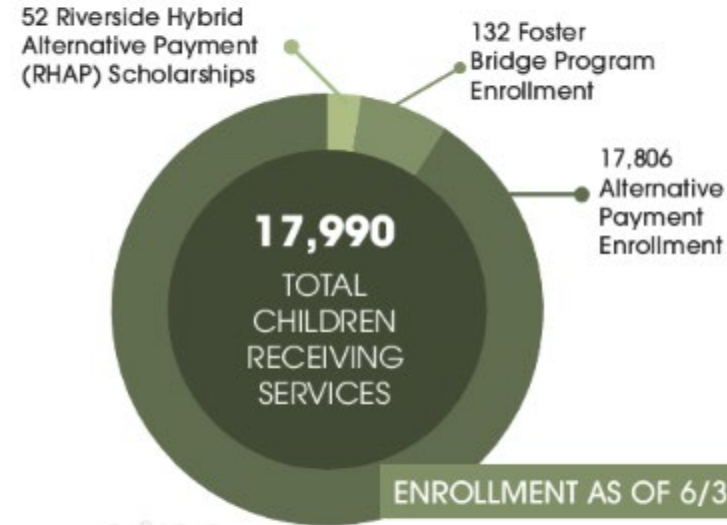
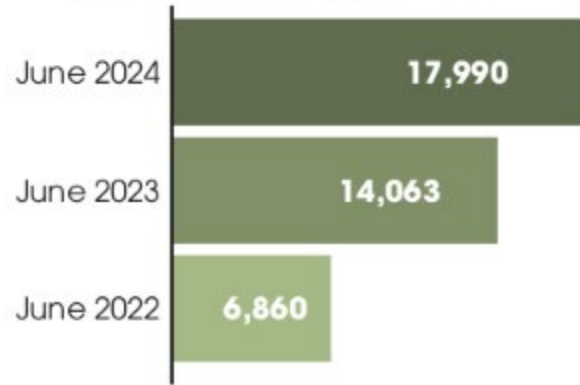
Child Care Referrals

29,369

Trauma-Informed Care (TIC) Training Hours

Enrollment Information

ENROLLMENT GROWTH OF OVER 162% SINCE 2021/2022 FY



Over 162% growth since June 2022

SCAN THE QR CODE FOR
ADDITIONAL ENROLLMENT
INFORMATION AND
APPLICATIONS.



Program Highlights

FOSTER BRIDGE

Provides resources and emergency care to families referred to us by DPSS

Over 68% of children referred to us were fully enrolled into quality care in 2023/2024.

RESOURCE & REFERRAL

Assists parents and caregivers in locating licensed child care and community resources

In 2023/2024, we provided over 39,000 child care referrals and over 6,750 technical assistance calls to potential and current child care providers.

ENROLLMENT OUTREACH

Eligible families are contacted for potential services on a monthly basis

Follow the QR code on the prior page to submit your application today and see if you qualify for child care assistance.

Continued cultivating connections to meet the needs of special populations in the community

New office locations at Mecca Farmworkers Service Center, Lake Elsinore, and Riverside

Expanding outreach in East Coachella Valley, Mecca, Blythe, and Lake Elsinore

Early educator training and support
Back to School Resource Fairs

Health and safety trainings for staff and providers



Quality Start Riverside County (QSRC) /
Quality Rating Improvement System (QRIS)

Supports quality improvement in early education and child care settings through coaching, training, self-assessments, and participation incentives



Riverside Hybrid Alternative
Payment Program (RHAP)

Provides child care scholarships and temporary scholarships for Migrant Head Start Program families, as well as incentivized provider reimbursement for QSRC providers

Universal PreKindergarten (UPK)
Supports and Resources

Provides training and support to Transitional Kindergarten (TK) staff in the areas of Early Math and Trauma-Informed Care, as well as parent education on available UPK options



Quality Early Learning Services Symposiums

Save the Dates

2024-2025 SCHEDULE

DATE	TIMES	THEME	LOCATION	MAX CAPACITY	CONTENT AREA/IN SUPPORT OF
9/14/24	8:30 a.m. - 3:30 p.m.	Equity, Inclusion, & Belonging Through Early Literacy	Riverside County Office of Education Conference Center	250	Equity & Inclusion and Literacy by 5th Grade Initiatives
2/1/25	9:00 a.m. - 2:00 p.m.	Working with Foster Youth/Resource Families	Riverside County Office of Education Lake Elsinore Admin Building	50	Foster Youth Success Initiative
3/22/25	8:30 a.m. - 3:30 p.m.	Leadership Development	Riverside County Office of Education Conference Center	250	Leadership Development Supporting Mental Health and Financial Literacy Initiatives
5/17/25	8:30 a.m. - 3:30 p.m.	Play Based Learning	Riverside County Office of Education Conference Center	250	Play-Based Learning Supporting UPK & Early Education Environments
6/2025	8:30 a.m. - 3:30 p.m.	Special Needs/Inclusive Environments	Desert Region TBD	250	Equity & Inclusion Initiative

All symposiums funded through QCC QI and R&R funds.

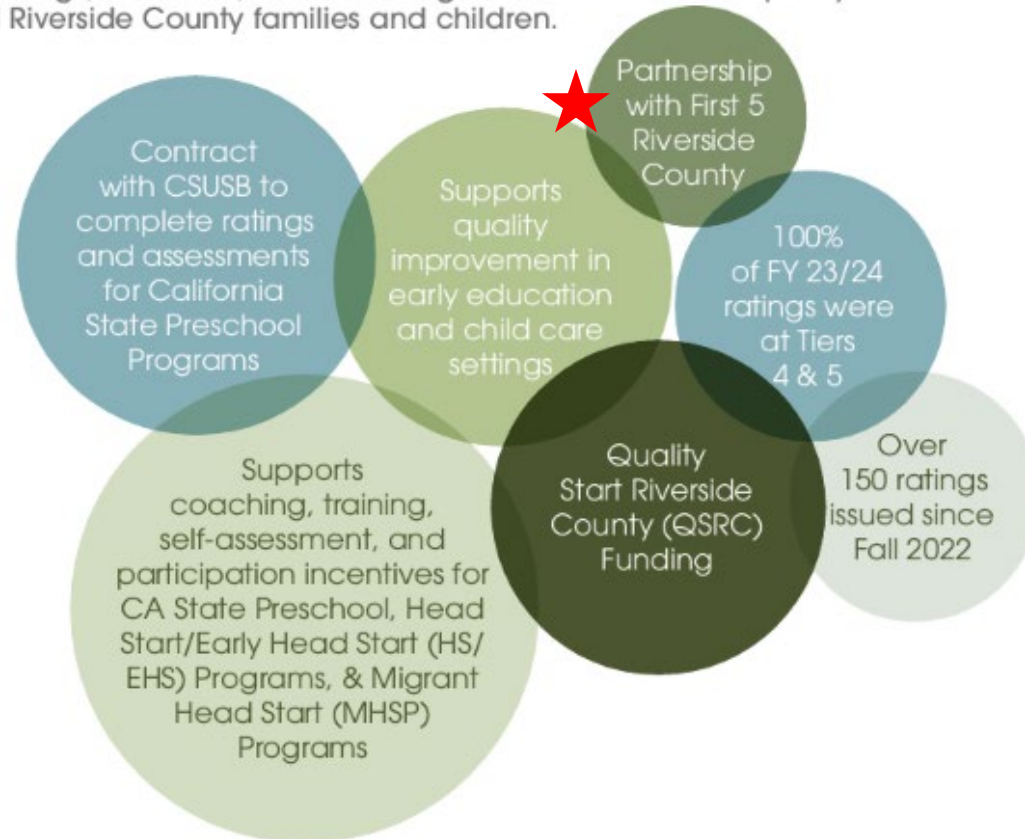
In support of



Quality Start Riverside County

Through Quality Start Riverside County (QSRC), a collaboration with First 5 Riverside County, all early education settings and child care provider types are eligible to receive support to positively impact the quality of services available to children. While California State Preschool Programs are formally rated and assessed, all other programs receive needed trainings, resources, and coaching to build and sustain quality services for all Riverside County families and children.

FOR MORE INFORMATION
ON QSRC, FOLLOW THE
QR CODE BELOW

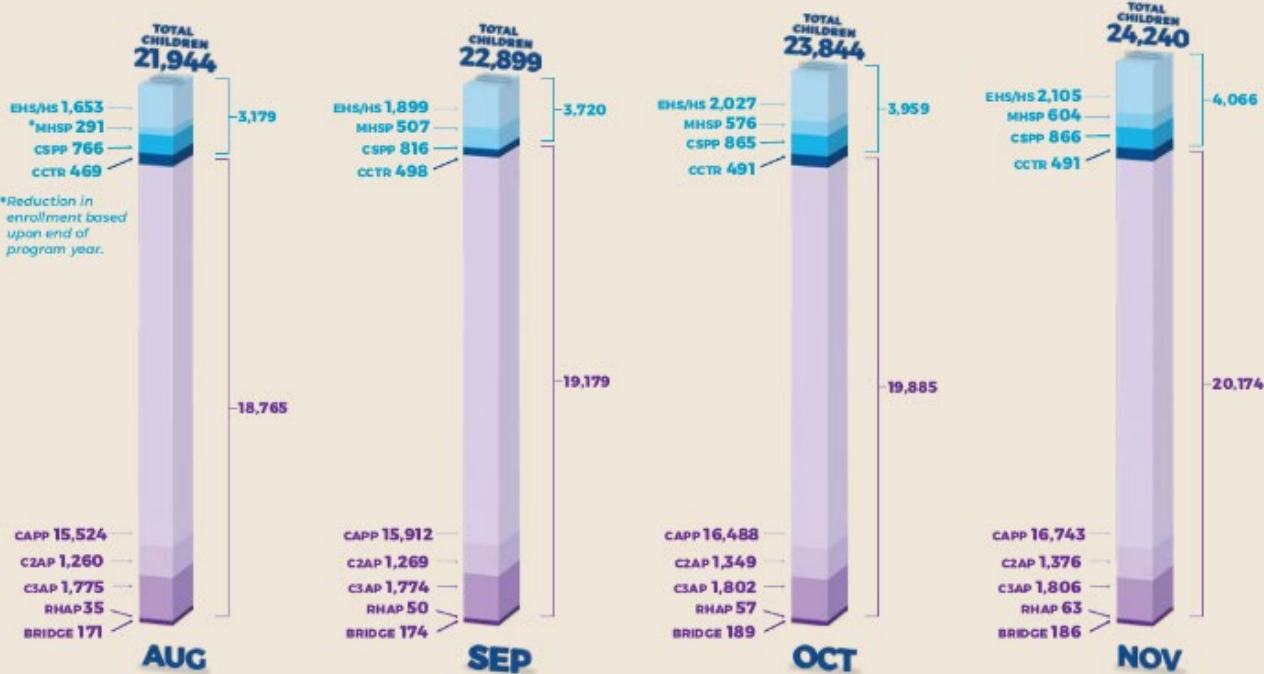


DECEMBER 2024

EARLY EDUCATION SERVICES UPDATE

EARLY EDUCATION SERVICES ENROLLMENT

TOTAL ENROLLMENT BY MONTH, FY 24-25



Total Children on Eligibility List (All Ranks)
1,188
As of December 1, 2024

November Outreach for CAPP Enrollment
792 Families
1,197 Children

Resource & Referral
2,094 Child Care Referrals Completed

Family and Provider Support - Family Resource Centers
(Desert Hot Springs and Blythe)
48 Parent/Providers Fiscal YTD

Children enrolled in Early Head Start/Head Start (EHS/HS), Migrant Head Start Program (MHSP), California State Preschool Program (CSPP), and California Center-Base California Center-Base Program (CCTR).

Children enrolled in California Alternative Payment Program (CAPP), CalWORKs Stages 2 and 3 (C2AP and C3AP), Riverside Hybrid Alternative Payment Program (RHAP), and Foster Bridge (Bridge).

SUBSIDIZED CARE PROGRAM SUPPORTS

Transition of Family, Friend, & Neighbor Providers to Licensed Family Child Care Homes On-Boarding New Providers - Fiscal YTD

New Licensed Family Child Care Homes 24 = 198 Child Care Slots

Riverside Hybrid Alternative Payment Program (RHAP) Incentives - Number of Quality Start Sites Receiving RHAP Incentives - Fiscal YTD

173 Unduplicated Providers 1,569 Children

RHAP Service Supports for Migrant Head Start Program Transition to CAPP - Fiscal YTD

158 Families 192 Children

COMMUNITY SUPPORT

Workforce Development

- \$2,718,400 YTD Early Education Teacher Development Grant Stipends issued
- 63 Graduates from CCIP YTD (Child Care Initiative Project)
- 6,104 hours of training provided for 106 participants (Trainings provided in support of the Superintendent's Financial Literacy, Equity & Inclusive Practices, and Literacy by 5th Grade Initiatives)
- 16 UPK/TK/Inclusion Training
- 17 Passport Training Series
- 27 Superintendent Initiative Focused Training
- 46 UPK Symposium

Continuing Education Opportunities

- MHSP/UCR Partnership Participation
- 73 Participants YTD

Locations and Contact Information

ECE REGIONAL OFFICE LOCATIONS

Riverside – 14th St.
3610 14th St,
Riverside, CA 92501

Murrieta
24990 Las Brisas Rd,
Murrieta, CA 92562

Riverside – Almond
4101 Almond St,
Riverside, CA 92501

Lake Elsinore
575 Chaney St,
Lake Elsinore, CA 92530

Indio
47-110 Calhoun St,
Indio, CA 92201

Mecca
91-275 66th Ave,
Ste 600
Mecca, CA 92254

RIVERSIDE COUNTY OFFICE OF EDUCATION

3939 13th St,
Riverside, CA 92501

For more information on our programs and services, please visit us at rcoe.us and find Early Care and Education, or call us at (800) 442-4927.

Special Contracts

CHILD CARE INFORMATION

**Resource & Referral
and Eligibility List**
RandR@rcoe.us

Foster Bridge Program
fosterbridge@rcoe.us

Quality Start Riverside County
(951) 826-6699

PROVIDERS

Provider Training Opportunities
(800) 442-4927

Provider Portal Support
(951) 826-6655

OTHER EES PROGRAMS

**Head Start, Early Head Start,
California State Preschool
Program, and General Child Care
Center-Based (CCTR)**
(800) 600-1800

Migrant Head Start Programs
(760) 337-1555

Universal PreKindergarten (UPK)
upk@rcoe.us



Early Education Services Program Leadership

Assistant Superintendent

JoAnne Lauer

Executive Directors

Early Care and Education (ECE): Jennifer Beggs

Early Education Programs (EEP): Joseph Nieto III

Migrant Head Start Programs (MHSP): Jose Martinez



Questions?





**RIVERSIDE COUNTY
OFFICE OF EDUCATION**

EDWIN GOMEZ, Ed.D. | County Superintendent of Schools

Thank you!

Jennifer Beggs

jbeggs@rcoe.us

(951) 826-6608