



Burnsville · Eagan · Savage

**Believe, Belong, Build and Become.**

# **Burnsville High School**

**May 14, 2026**

Jesús Sandoval, Principal

Kim Fritz, 9th Grade BARR Coordinator

# Burnsville High School Foundations



# Graduation Rates

## Burnsville High School

| Race/Ethnicity      | 2022            |                |                    | 2023            |                |                    | 2024            |                |                    | 2025            |                |                    |
|---------------------|-----------------|----------------|--------------------|-----------------|----------------|--------------------|-----------------|----------------|--------------------|-----------------|----------------|--------------------|
|                     | Total Graduates | Total Students | Percent Graduating | Total Graduates | Total Students | Percent Graduating | Total Graduates | Total Students | Percent Graduating | Total Graduates | Total Students | Percent Graduating |
| Native/Indigenous   | 3               | 5              | 60%                | 3               | 3              | 100.0%             | 2               | 5              | 40.0%              | 3               | 3              | 100.0%             |
| Asian               | 48              | 54             | 89%                | 40              | 47             | 85.1%              | 33              | 37             | 89.2%              | 29              | 33             | 87.9%              |
| Black or African Am | 105             | 120            | 88%                | 109             | 130            | 83.8%              | 98              | 111            | 88.3%              | 107             | 128            | 83.6%              |
| Latino              | 53              | 90             | 59%                | 68              | 112            | 60.7%              | 65              | 120            | 54.2%              | 67              | 108            | 62.0%              |
| Two or More         | 16              | 18             | 89%                | 27              | 32             | 84.4%              | 20              | 23             | 87.0%              | 17              | 19             | 89.5%              |
| White               | 191             | 204            | 94%                | 162             | 176            | 92.0%              | 167             | 186            | 89.8%              | 159             | 166            | 95.8%              |
| BIPOC               | 225             | 287            | 78%                | 247             | 324            | 76.2%              | 218             | 296            | 73.6%              | 223             | 291            | 76.6%              |
| All                 | 416             | 491            | 85%                | 409             | 500            | 81.8%              | 386             | 483            | 79.9%              | 383             | 458            | 83.6%              |

- Curriculum Alignment and Instructional Guarantees
- Early Identification and Intervention
- Build Strong Relationships with Caring Adults
- Relevant Learning and Academic Support
- Family and Community Engagement

# Focus Areas 2025-26

- **Tier 1 - Instructional Guarantees**
  - Integrated English Language Arts (ELA) - Instructional Models, Scaffolds & Strategies
- **2nd Year of 9th Grade Academy** - Building Assets Reducing Risks
  - Team time, building relationships, data driven
- **Increase Student Access & Support for Rigorous Coursework**
  - Example: Two sections of AP Human Geography to four sections
- **Continued Attention on Culture and Climate**
  - Attendance, cell phones and bathrooms

# Integrated ELA

**Instructional Models** - Team teaching, parallel teaching, station teaching

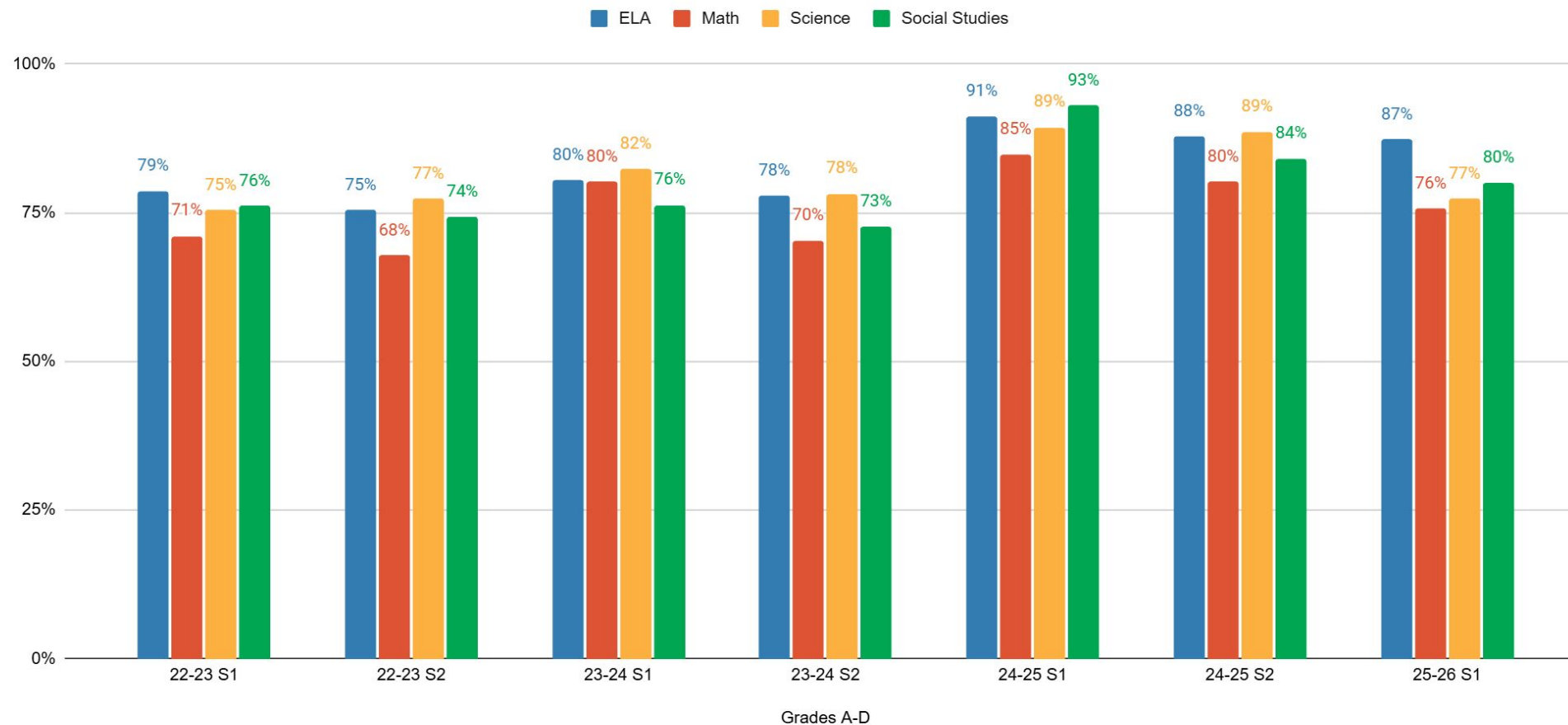
**Scaffolding & Strategies** - Adapted text, partner reading, primary language support, chunking text

**Collaborative Planning** - Standards alignment, target trackers

**Data Driven** - Schoology, Educlimber, Ellevation

# What is the data telling us?

Grade 9 Passing Core Content Areas



# Two Pillars - BARR

## Relationships

- Staff to staff
- Student to student
- Staff to student



## Data

- \*Qualitative data
- \*Quantitative data

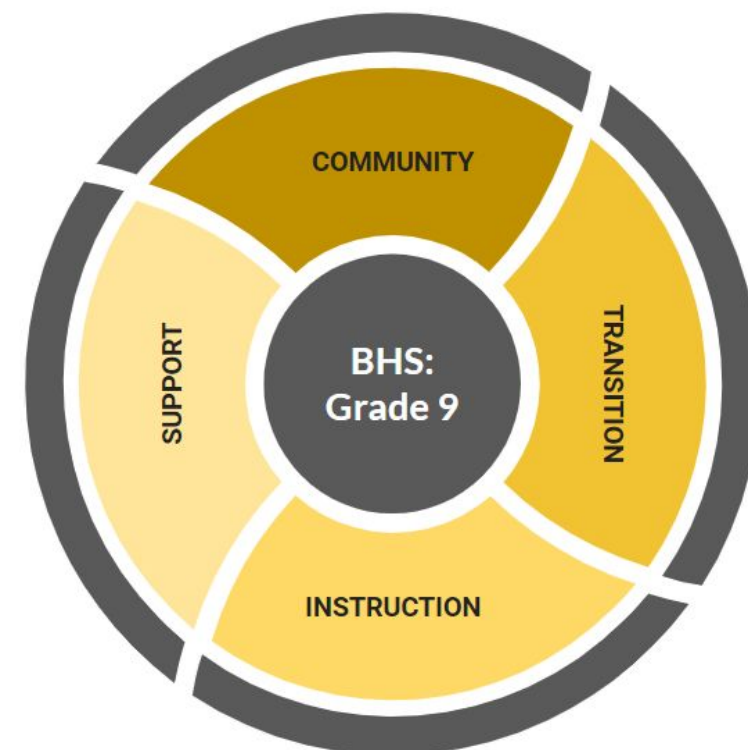
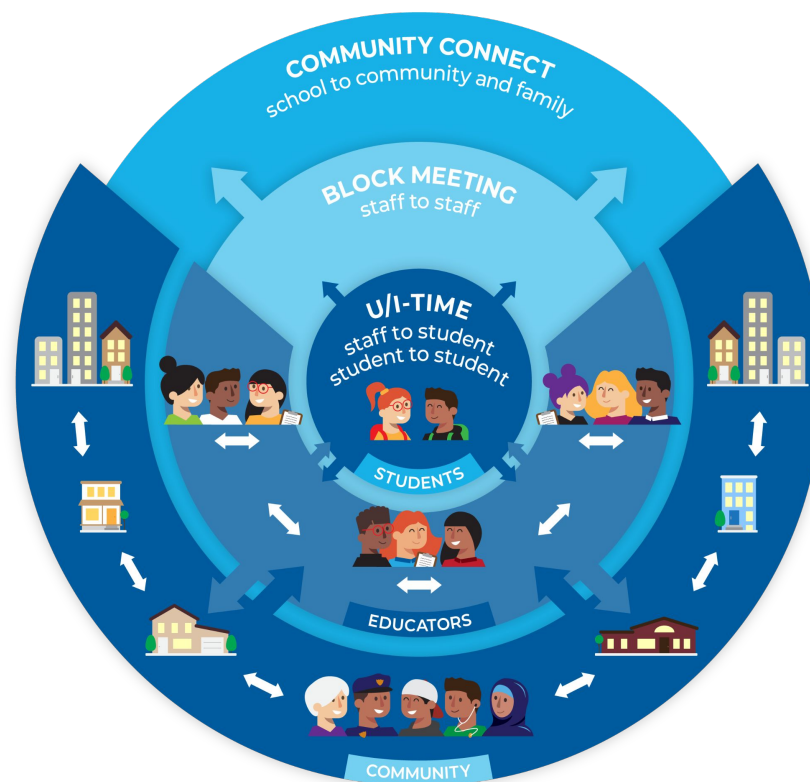


“Grades are a good indicator of how a student is doing, but if you just look at grades, you miss a lot of things: social changes, friends-group changes, attendance, health, all of a sudden a student is getting too skinny. It’s like a puzzle, and everybody holds a piece of the puzzle so when we are all together, we can see the whole kid.”

Barr Educator

# 9th Grade Academy - BARR's Eight Strategies

1. Focus on the whole student
2. Provide professional development for teachers, counselors, and administrators
3. Use BARR's relationship building lessons
4. Create cohorts of students
5. Hold regular meetings of the cohort teacher teams
6. Conduct Community Connect meetings
7. Engage families in student learning
8. Engage administrators



# Thank you

**Jesús Sandoval**

**Principal, Burnsville High School**

**[jsandoval@isd191.org](mailto:jsandoval@isd191.org)**

**Kim Fritz**

**9th Grade BARR Coordinator**

**[kfritz@isd191.org](mailto:kfritz@isd191.org)**

