



SCHEMATIC DESIGN

Woodrow Wilson Elementary School Replacement

Schematic Design Board Presentation

February 26, 2019

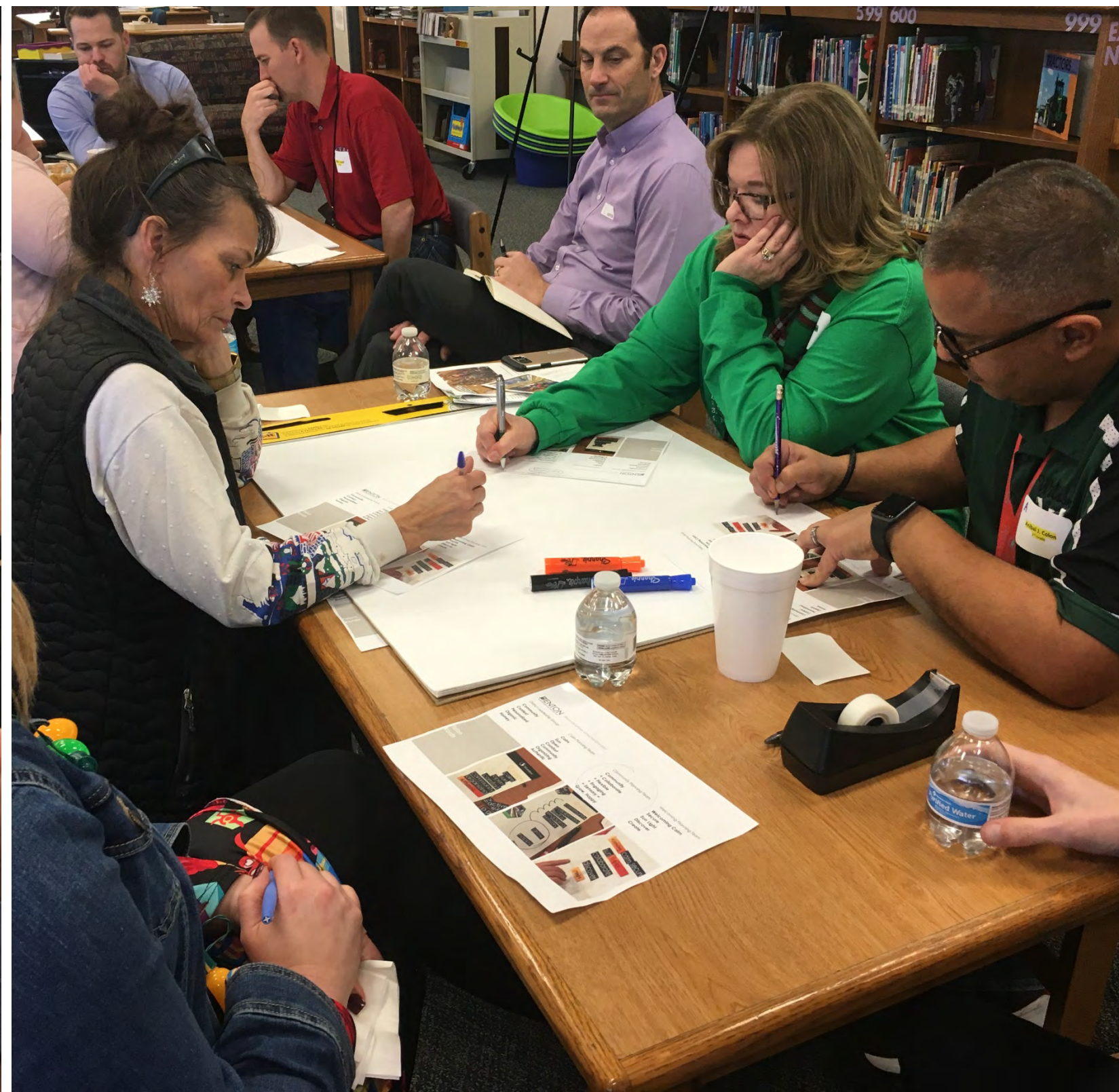


DISCOVERY

INFORMATION GATHERING

VISIONING SESSION

S U M M A R Y



VISIONING SESSION

V I S I O N W O R D S

District Leadership Team

Community
Context
Personalized
Organic
Homey

Calm Planning Team

Calm
Sun
Open
Comfort
Community
Organizing
Authentic

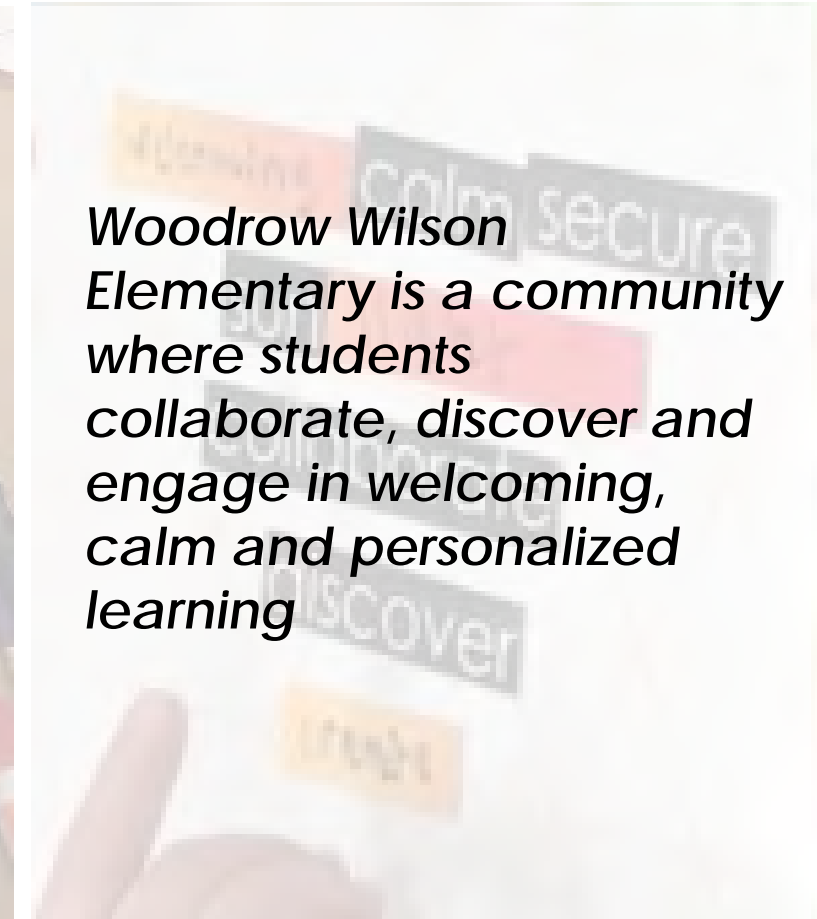
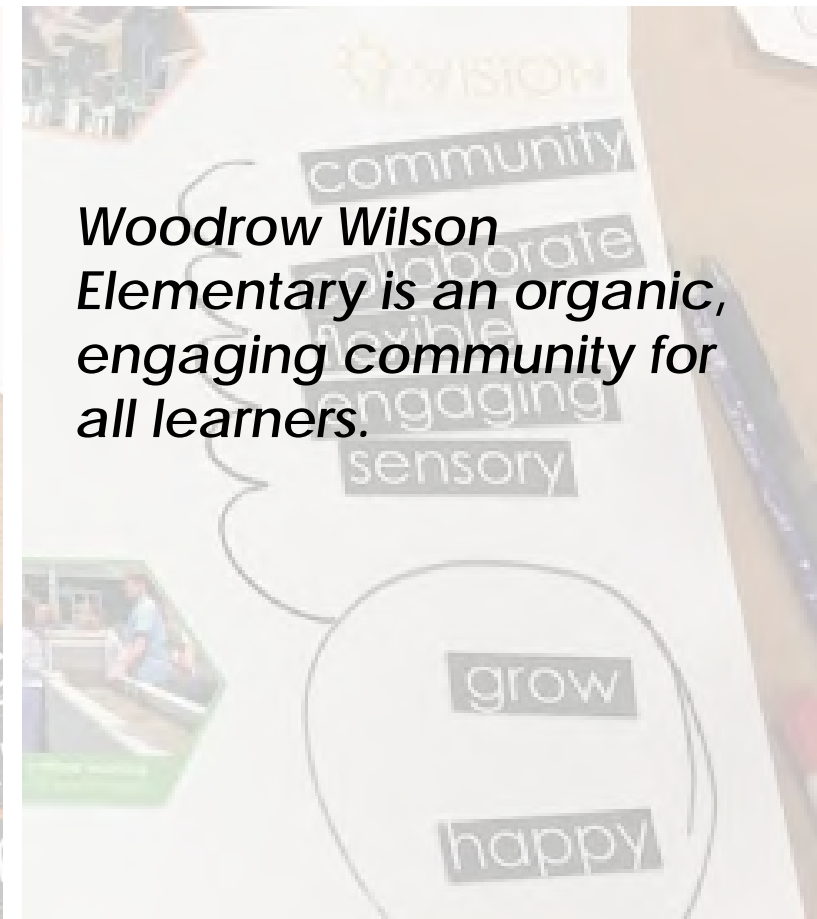
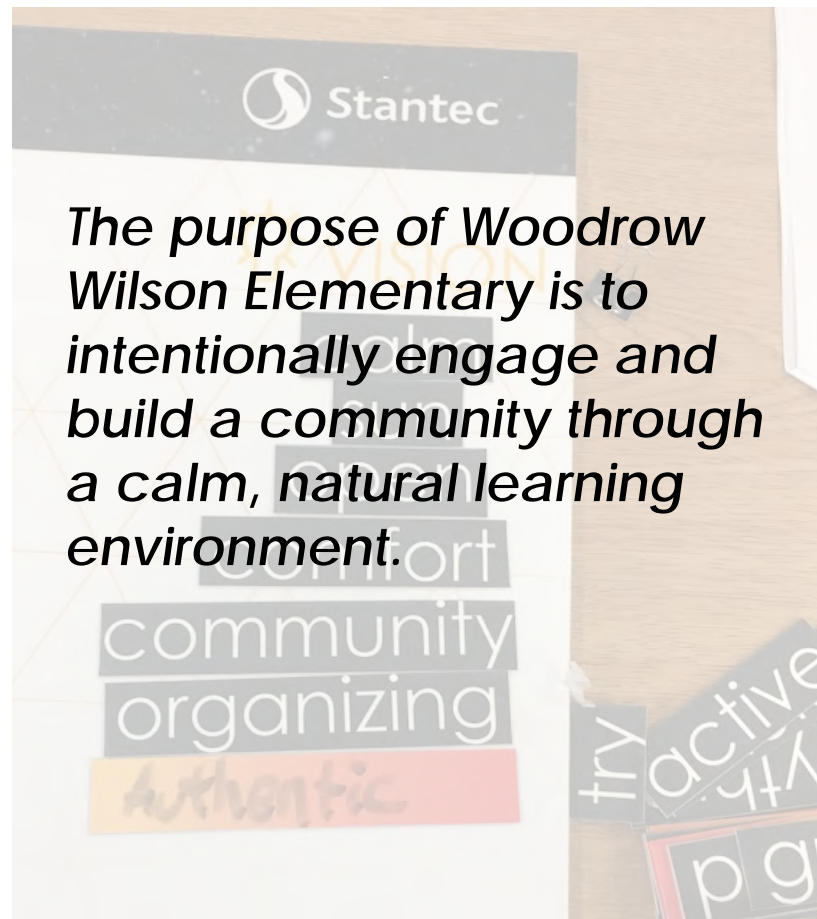
Community Planning Team

Community
+ Collaborate
+ Flexible
+ Engaging
+ Sensory =
Grow, Happy

Welcoming Planning Team

Welcoming **Calm** **Secure**
Sun **Light**
Discover
Create

Vision
Words



VISIONING STATEMENT

VISION, MISSION AND GOALS

Vision

Woodrow Wilson Elementary is an engaging and welcoming community where students collaborate and discover in a calm and personalized learning environment.

Mission

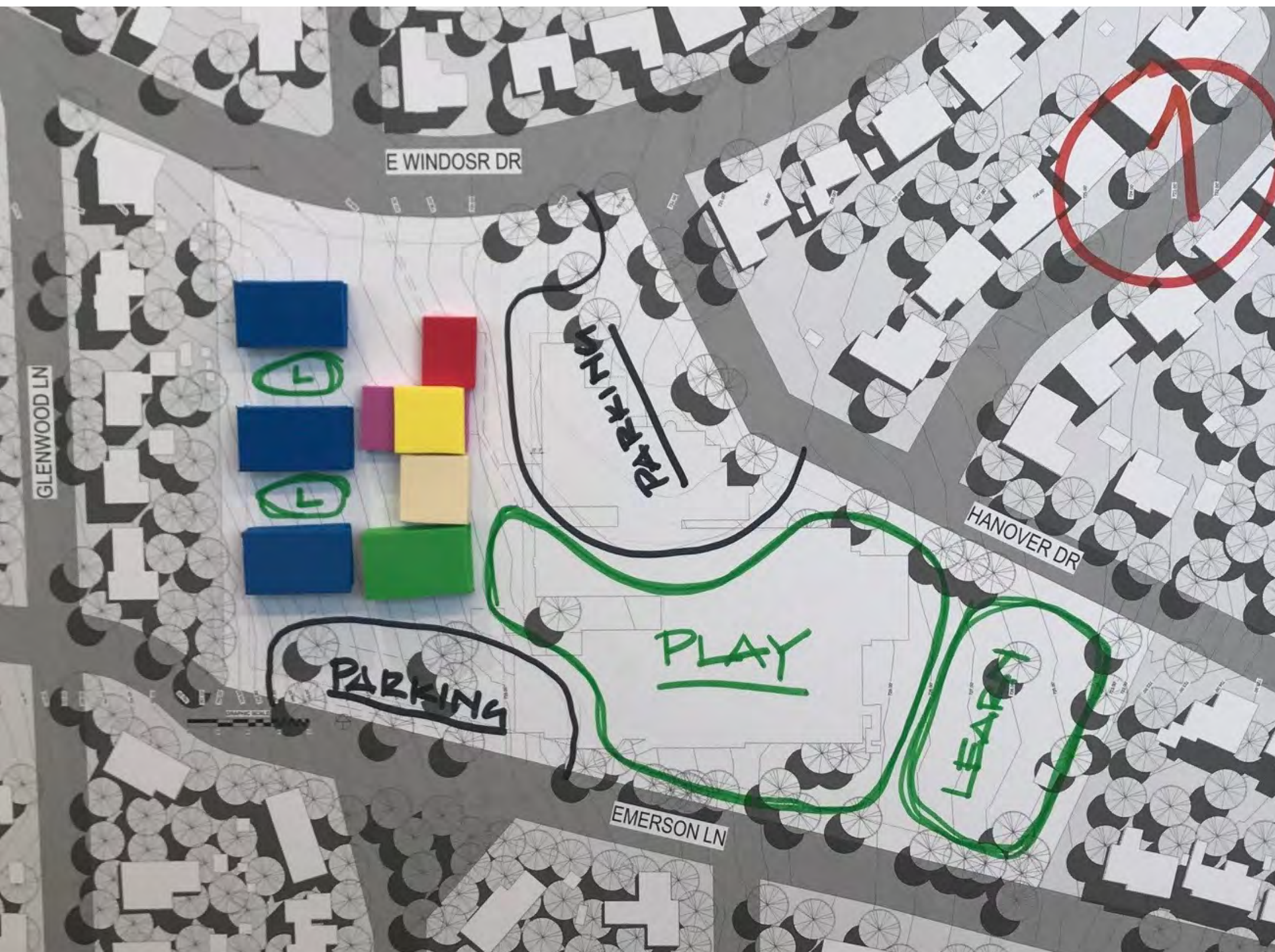
Woodrow Wilson new school building will create a welcoming environment for the community. It will foster collaboration and discovery in a safe and calm environment.

Goals

- School shall be organized in grade level pods, and each pod will have dedicated collaboration spaces.
- A convenient connection to the outdoors is from every grade level pod.
- 50% solar energy and comparable sustainable strategies to prototype.
- Views and direct / indirect daylight harvesting in every teaching space.
- Learning on display will be prominent in each grade level pod to allow teachers passive supervision of all spaces in a pod.
- Controlled between the pods and the common area.
- The library is a centrally located, and will be a destination.
- Gym and Dining shall be available for after hour community use.
- The scale and exterior aesthetic will fit the context of this community.

VISIONING SESSION

S U M M A R Y

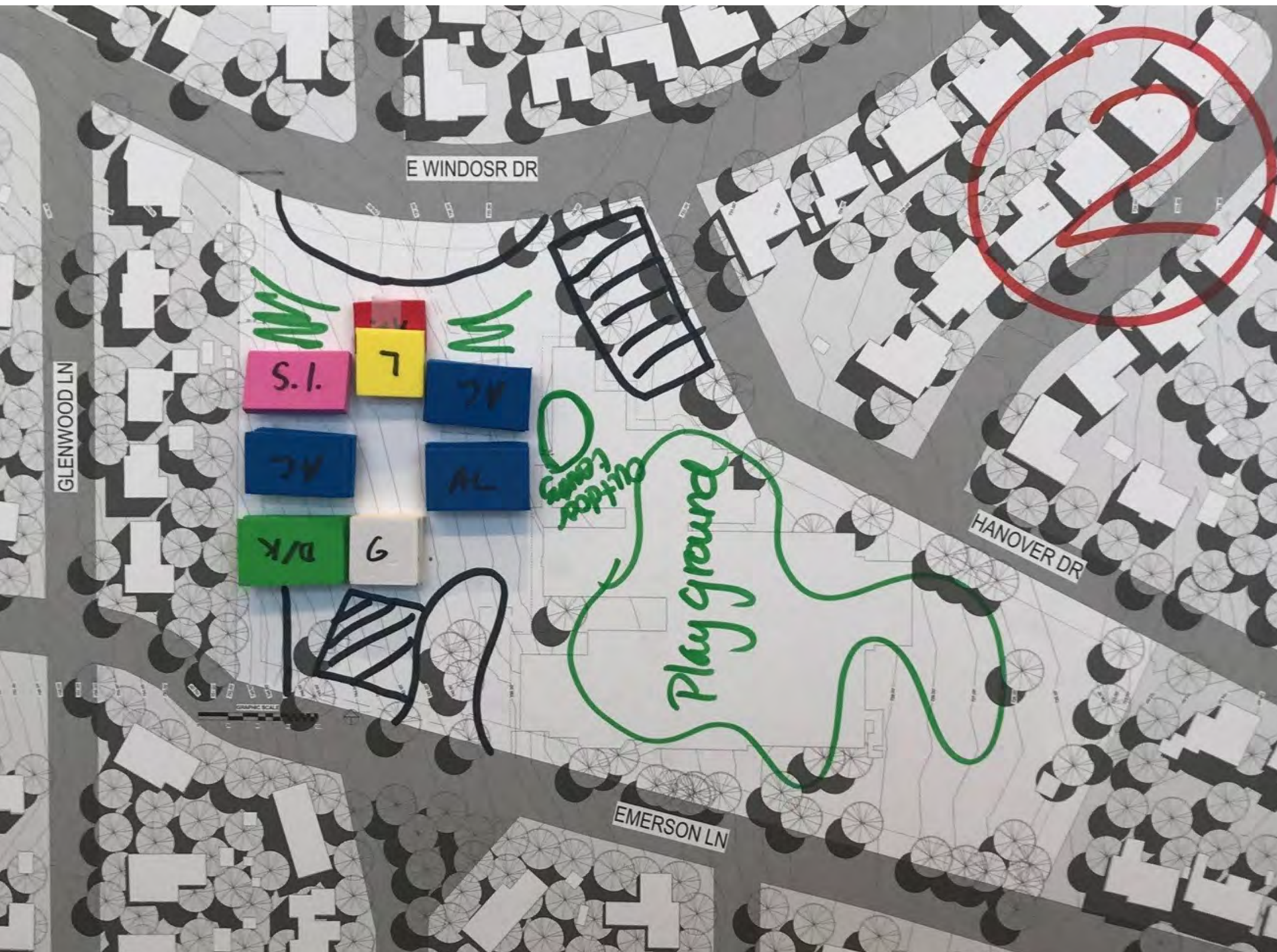


Team One Massing

- **Front entry facing North East**
- **Site entry through Winsor and Hanover**
- **Uninterrupted connection to play areas (no drives)**
- **Outdoor learning areas of several scales**

VISIONING SESSION

S U M M A R Y



Team Two Massing

- **Front Entry facing North**
- **Site entry through Winsor**
- **Uninterrupted connection to play areas (no drives)**
- **Outdoor learning areas of several scales**
- **Only two drop-off drives**

VISIONING SESSION

S U M M A R Y



Team Three Massing

- **Front Entry facing East**
- **Site entry through mainly Hanover**
- **Uninterrupted connection to play areas (no drives)**
- **Outdoor learning areas of several scales**
- **Three drop-off drives**

VISIONING SESSION

S U M M A R Y

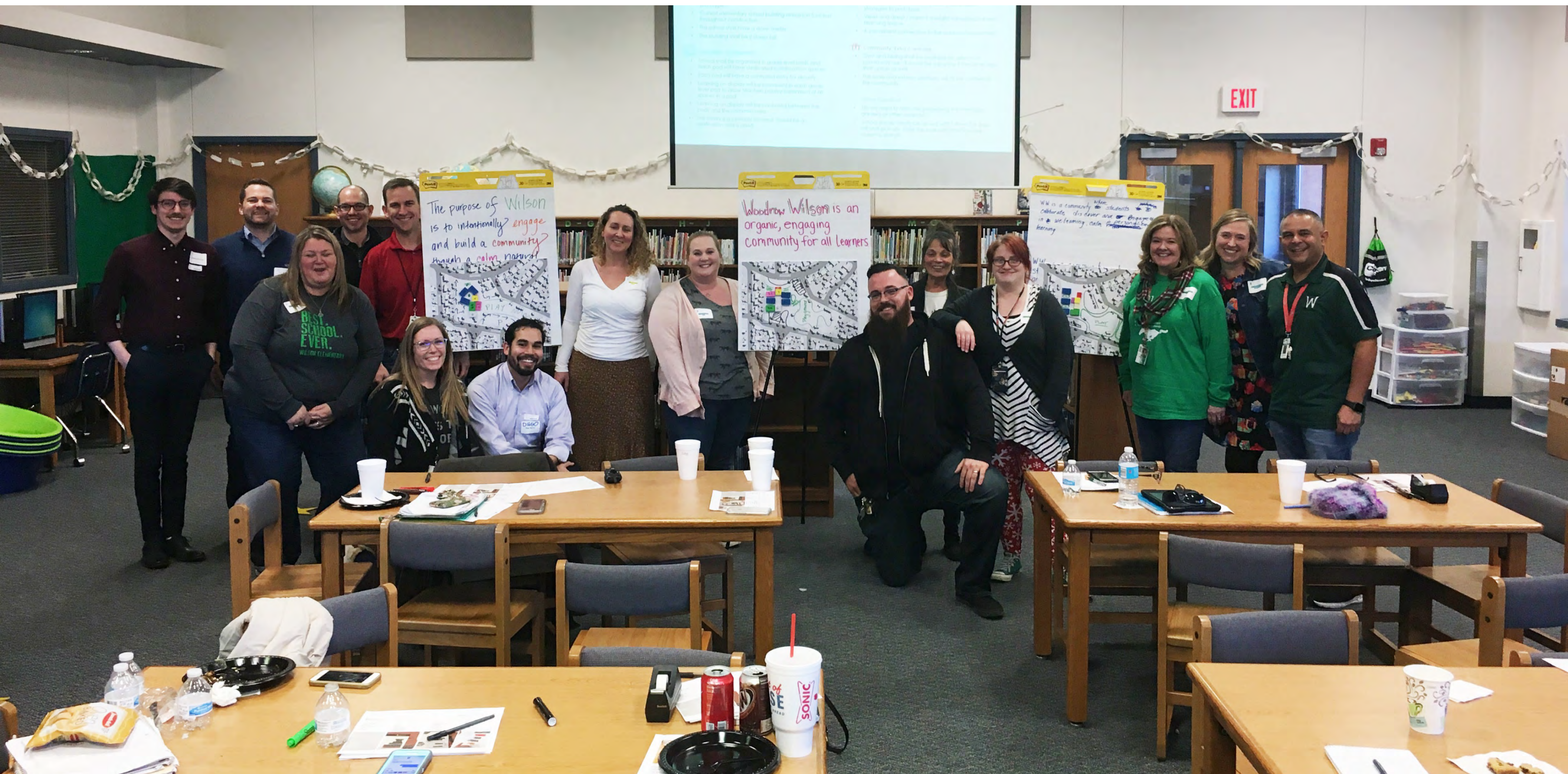


Massing Take-Aways

- **The new building will be on the westside of the site**
- **The entry should be visible from all three surrounding streets, welcoming the community**
- **Uninterrupted connection to play areas (no drives)**
- **Outdoor Learning Areas of different scales and types**
- **A connection to the adjacent parks is important**

VISIONING SESSION

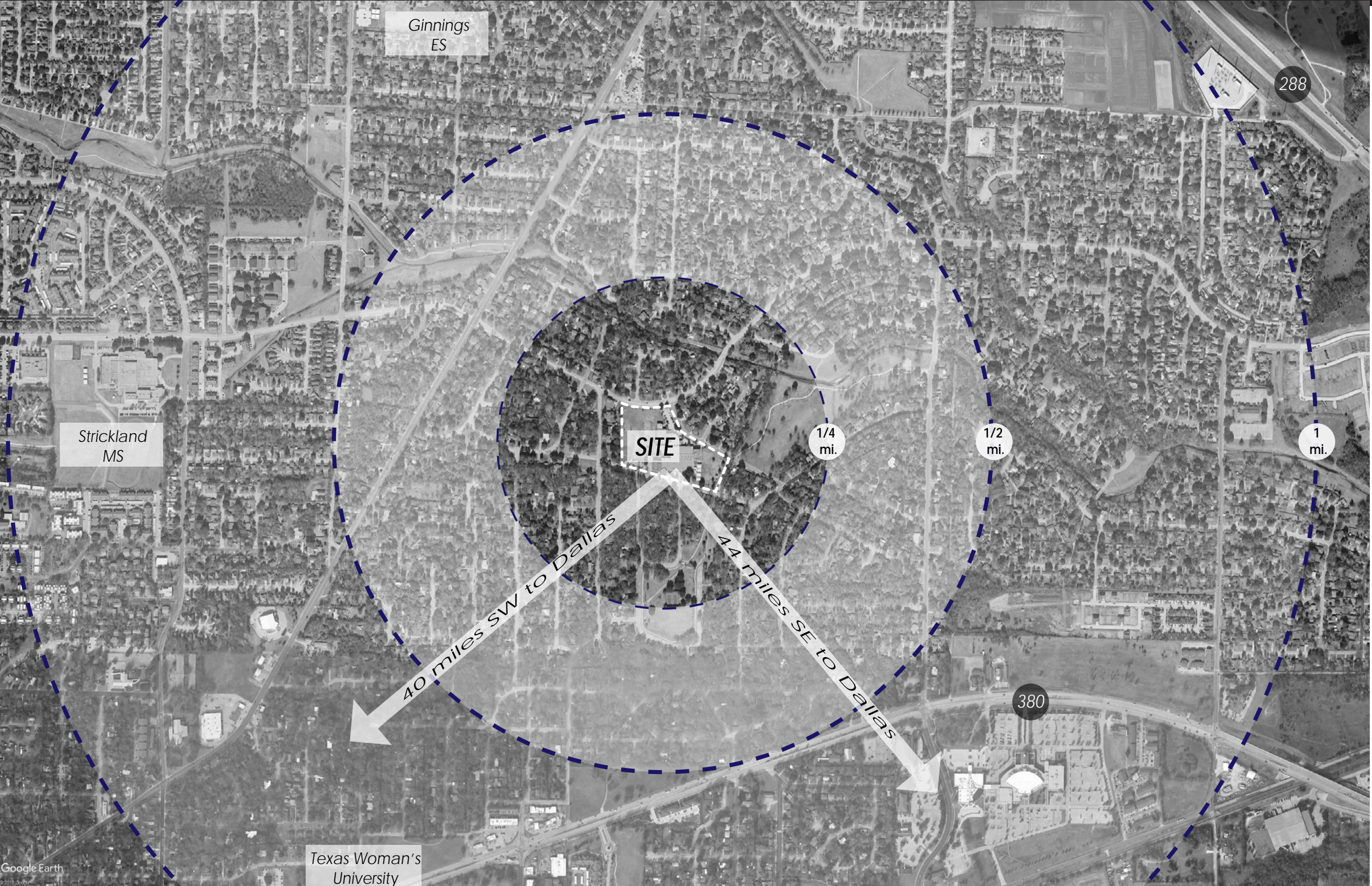
S U M M A R Y



CONCEPT DESIGN

CONTEXT AND SITE ANALYSIS

CITY CONTEXT



The site is located 3 miles Northeast of downtown Denton, TX. This is an older part of the city and is well established.

CONTEXT AND SITE ANALYSIS

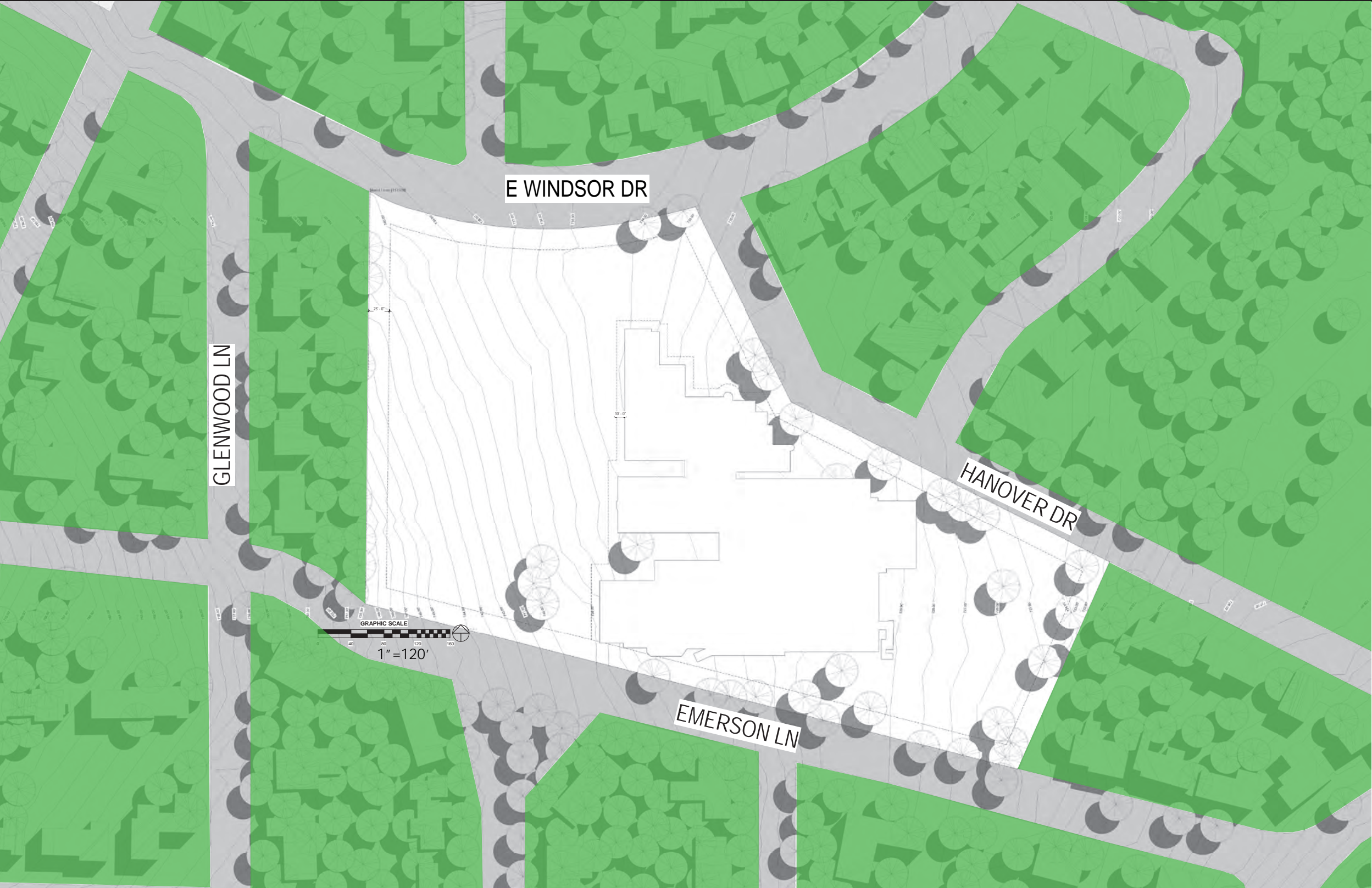
FUTURE DEVELOPMENT



The 2030 development map from the city of Denton illustrates major road renovations in the surrounding area. The change on Windsor road is currently underway. The map suggests that the two adjacent parks will be growing in some way. We are not exactly sure what this means but it provides opportunities to connect the school site to these parks for student use.

DESIGN ASPIRATION

PART I + NARRATIVE



With the surrounding context being heavily vegetated, the site presents itself as a clearing or meadow in the middle of the trees.

DESIGN ASPIRATION

PART I + NARRATIVE



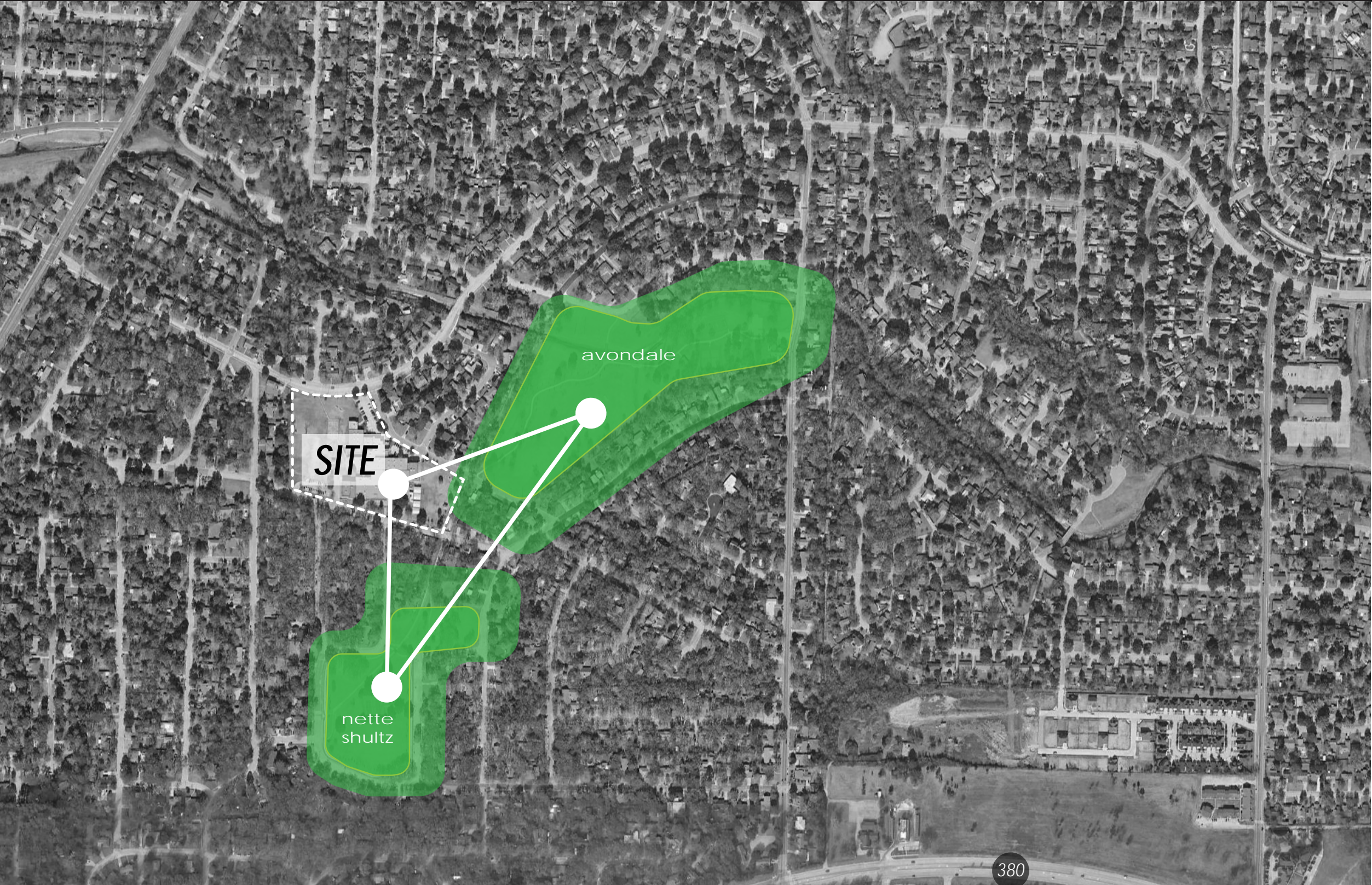
This meadow opens up at several transition points around the site. This transition is interesting in that it provides for a change in atmosphere and aesthetic on many levels. There is a change in scale from vegetated forest to open meadow. Light qualities change from dark to light. Microclimate temperatures change from cool to warm. Different ecological conditions exist in the forest, the meadow and even at the edge in between the two. Color palletes change from one to the other.

All of these characteristics provide a sense of arrival to the site and new school. These characteristics also provide grounds for us to tell the story of the new Woodrow Wilson with all of these elements finding their way onto the site and into the building.

A constant connection to the outdoors should be facilitated through visual and physical connections. The building should site within the site rather than on top of it and it should respond to site conditions in order to provide optimal indoor and outdoor learning environments.

DESIGN ASPIRATION

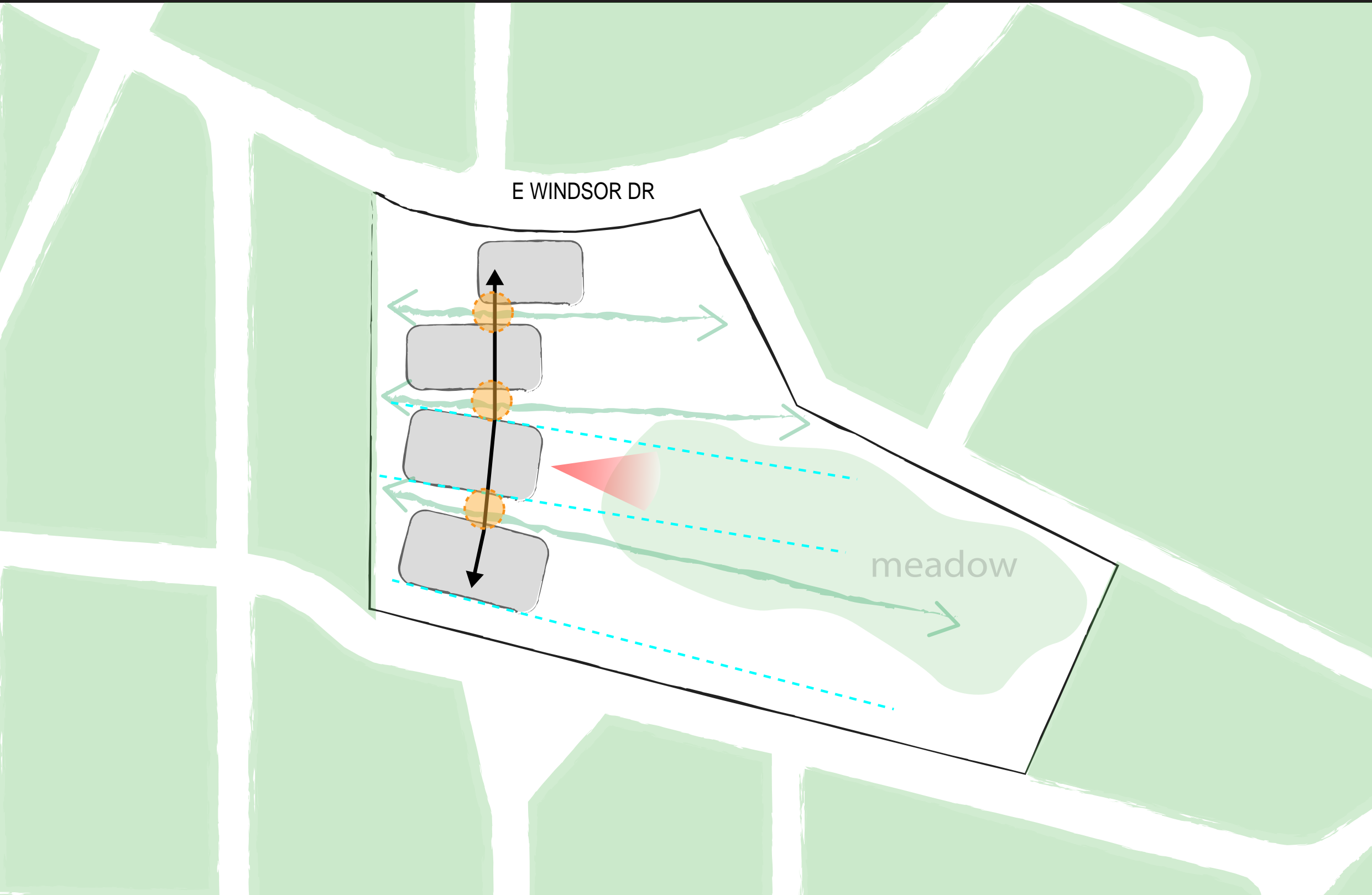
PART I + NARRATIVE



The idea of the meadow also has interesting implications on the larger context surrounding area. There is a clear connection between all three meadows in the area. This should be utilized in a way to provide opportunities for the teachers and students but also the surrounding community.

CONCEPT IMAGERY

OPTION 2



A constant connection to the outdoors should be facilitated through visual and physical connections. The building should site within the site rather than on top of it and it should respond to site conditions in order to provide optimal indoor and outdoor learning environments.

Connections to the outdoors will happen at transparent connectors along the circulation path of the building. This allows for compelling changes in scale from compressed spaces to open spaces which facilitates a dynamic environment while moving throughout the building. This also provides natural daylight throughout the building which is imperative to a successful learning environment.

The building starts to kink as it moves south which focuses views towards the new meadow. These kinks and connectors provide opportunities for the landscape to move into and through the building which creates outdoor courtyards for learning experiences at a variety of scales.

DESIGN ASPIRATION

PART I + NARRATIVE



DESIGN ASPIRATION

PARTI + NARRATIVE



CONCEPT IMAGERY

S I T E P L A N



New drop off and pickup drives will come off of Hanover Drive and Emerson Lane. A third drive will be to the west of the proposed building and will serve as bus drop off and fire lane.

The meadow will sit in the middle of those drives and include outdoor play and a natural learning lab. The outdoor play area will consist of turf and possibly some playground equipment while the learning lab will be more of a wild area with native grasses.

The Northeast outdoor play area will be hardscape. The outdoor learning areas between the kinks should work with the topography and provide ways to traverse from them to the meadow. These areas should provide different areas within them where several classes use it simultaneously. There should be a compelling mix of hardscape and landscape with native vegetation.

CONCEPT IMAGERY

LEVEL ONE



The entry will sit on the East side of the building next to the administration block. An entry court providing access from the parking lot to the front door should be welcoming and enjoyable.

CONCEPT IMAGERY

LEVEL TWO



CONCEPT IMAGERY

MASSING_OPTION_1



CONCEPT IMAGERY

MASSING_OPTION_1



CONCEPT IMAGERY

MASSING_OPTION_1



CONCEPT IMAGERY

MASSING_OPTION_1



CONCEPT IMAGERY

MASSING_OPTION_1

