

Community Schools in Duluth

Jen Eddy, Executive Director
Myers-Wilkins Community School Collaborative

Rachel Thapa, Full Service Community School Coordinator
Lincoln Park Middle School

A Community School is a smart school

What is a Community School?

- Schools and communities **connect**, **collaborate**, and **create**. Children and families have an array of supports from community partners right at their school.
- Community schools contain a host of opportunities and supports built-in that give students and parents all the tools they need to learn and grow.



[Community Schools Animation Video](#)

Community Schools Help Children Learn

Schools, together with their communities, must work to fulfill **six conditions for learning** identified as necessary for every child to succeed, based on an analysis of research.

Conditions for Learning:

1. **Early childhood development** is fostered through high-quality, comprehensive programs that nurture learning and development.
2. The school has a **core instructional program** with qualified teachers, a challenging curriculum, and high standards and expectations for students.
3. Students are **motivated and engaged in learning** -- both in school and in community settings, during and after school.
4. The **basic physical, mental and emotional health** needs of young people and their families are recognized and addressed.
5. There is **mutual respect and effective collaboration** among parents, families and school staff.
6. Community engagement, together with school efforts, promotes a **school climate that is safe, supportive, and respectful** and connects students to a broader learning community.

What is a Community School?



Career
College,
Citizenship



Community
Engagement



Early
Childhood
Development



Engaging
Instruction



Family
Engagement



Health and
Social Supports



Expanded
Learning
Opportunities



Youth
Development

Shared Leadership

Principal with clear instructional vision and high expectations for all students

Shared school decision making with communities of families, community organizations, teachers/school staff, and students

A **Community School Coordinator** who works closely with principal and school leadership team



Strategic Alignment

A Key component for community schools is having a structure to align components to work together.

A **school-site leadership team**, often comprised of educators, parents, community partners, and others, is responsible for

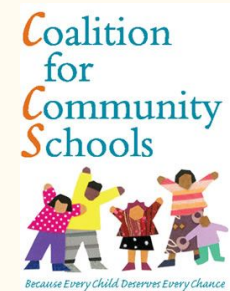
- creating a shared vision for the school,
- identifying desired results
- helping align and integrate the work of partners with the school.

A **community school coordinator** works hand-in-hand with the principal, and is a member of the school leadership team. The coordinator is responsible for

- building relationships with school staff and community partners,
- engaging families and community residents,
- coordinating supports to students both inside and outside of the classroom

Coalition for Community Schools

The Coalition for Community Schools, housed at the Institute for Educational Leadership, is an alliance of national, state and local organizations in education K-16, youth development, community planning and development, family support, health and human services, government and philanthropy as well as national, state and local community school networks.



www.communityschools.org

Vision, Mission Principles and Strategies

Vision: Schools are centers of flourishing communities where everyone belongs, works together, and thrives.

Mission: To unite school, community and family for young people's success.

Principles: Partners in the Coalition for Community Schools believe that public education is essential for strong communities and a flourishing economy and democracy. We pledge to lead across organizational and institutional boundaries to ensure that all young people are prepared for college, careers, and citizenship.

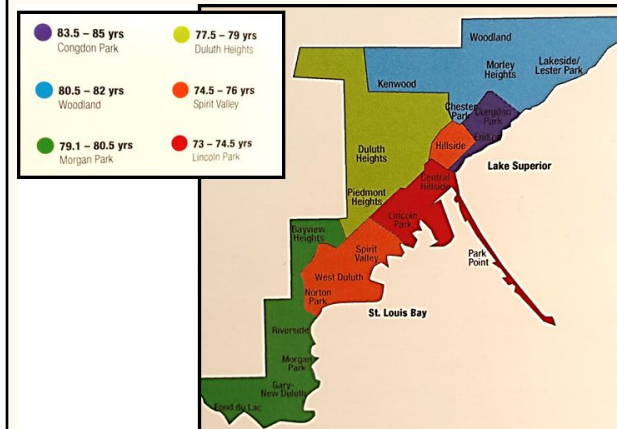
—
These principles guide our work together as we seek to develop effective and sustainable community schools:

Equity
 Learning & Development
 Community
 Family
 Youth Leadership & Engagement
 Results-Driven Partnership

Community schools are an essential equity strategy

Community schools pay attention to both academic and out-of-school factors that influence student learning and development.

Each Community School is unique to meet the needs of children, families and the surrounding community.



“Disparities in life expectancy in Duluth reflect differences in wealth, education, and neighborhood environment across all city residents.”

National Community Schools Models

Cincinnati
Baltimore
Albuquerque
Oakland
New York

Cincinnati, OH

The 2002 Cincinnati [Board Policy 7500: Community Learning Centers](#) was critical to the launch of a **district-wide adoption of community schools** (known as Community Learning Centers) in Cincinnati, Ohio. The school board saw the opportunity of a \$1 billion bond for school construction and modernization to radically transform its schools, and with demand from the community, seized on the concept of community learning centers that would open schools up to the community as thriving hubs. The board policy states that all district school buildings will serve as Community Learning Centers and provides written guidelines for the establishment of partnerships.

Cincinnati, OH

Cincinnati Public Schools continues to garner [national recognition](#) for its success in *turning around the district from an academic state of emergency in 2002 to now the highest-rated urban school district in the state of Ohio*, due to their fidelity in implementing community learning centers districtwide.



Baltimore, MD

The Baltimore city school board approved a policy that will formally add "community schools" - which for years have been providing intensive wraparound services to city students - to the district's portfolio.

The policy...creates a definition of the model and a framework for how they should run in the city. The policy also codifies the formal application process to operate under the designation, and sets up a citywide steering committee that would oversee them...

Currently there are 53 community schools, and four more in the pipeline; 30 organizations are providing community-school and out-of-school time services.

Last year, the Family League and three city schools received an Award for Excellence from the Coalition for Community Schools, a national organization representing the community schools initiative in nearly 50 cities across the country. Erica L. Green, The Baltimore Sun

Albuquerque, NM

The Albuquerque/Bernalillo County Community School Partnership

Joint Powers Agreement

Systems-level partners:

Bernalillo County,

the City of Albuquerque

Albuquerque Public Schools

United Way of Central New Mexico

Albuquerque Business Education
Compact.

Elected officials --[including the mayor and county commissioners](#)-- nonprofit and business leaders sit on a board that oversees policy and direction for the



New York, NY

Children's Aid Society

Currently operates **22 community schools in New York City**. These community schools are the result of **long-term partnerships between CAS, the New York City Department of Education, and other community resources**.

Offers **training, consultation, planning tools and guidance** on all aspects of designing and implementing the community school strategy, tailored to the unique needs and strengths of individual communities.

Children's Aid Society, New York, NY

Several third-party evaluations have documented a variety of **positive results including academic gains, better student and teacher attendance, school readiness and very high rates of parent engagement**.

Social Return on Investment: \$10.30 for every \$1.00 invested at the elementary level

\$14.80 for every \$1.00 invested at the middle school level

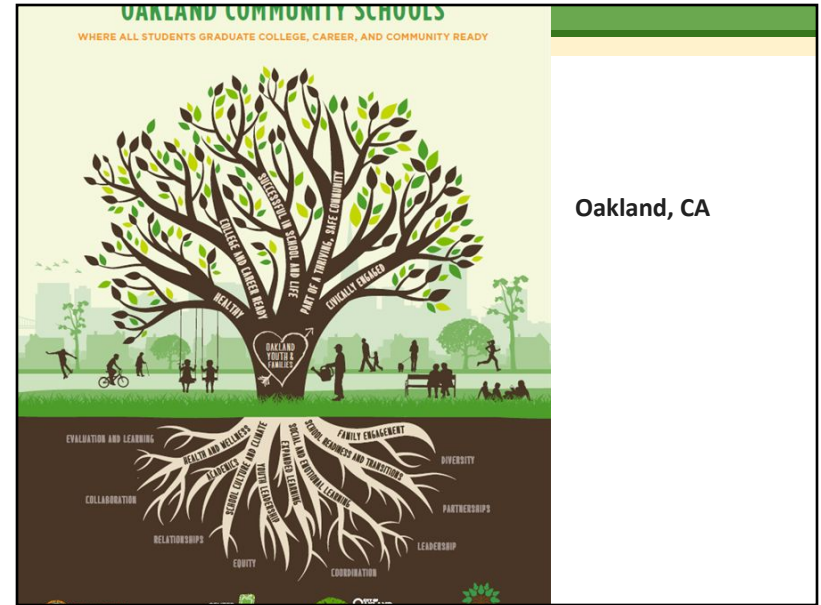
Children's Aid Society publications: *Community Schools in Action: Lessons from a Decade of Practice*, 2005

[Building Community Schools: A Guide for Action](#), (2011) which is available online through: nationalcenterforcommunityschools.org

Oakland, CA

"On the narrow measure of test scores, we have failed to close the achievement gap. This progress also sits in a city where too many young people are dying violent deaths and too many families are crushed by poverty. To stop the hemorrhaging of human capital we must take bold and immediate action to change a system that cannot in its current form meet the needs of children. To reach our vision of engaging every child in joyful, productive learning, we have to move from a few full-service community schools to become a full-service community district. The full service community school, of which we now have many thriving examples in Oakland, is a place where the school has broadened its mission and vision to meet the needs of all of its students."

-Tony Smith, Superintendent of Oakland Unified School District



Oakland, CA

Community Schools in MN

Education Minnesota supports Full Service Community Schools as strategy to meet the needs of students and families. In 2015, staff and parents from Duluth and Brooklyn Center advocated at the capital for support of FSCS.

The MN Legislature approved \$1 million to create FSCS in MN

MDE Grant Funding

- in 2015 Lincoln Park received funding
- This Fall, Myers-Wilkins and Denfeld were notified they would be awarded an implementation and planning grants.

Duluth

FSCS

Leadership

Team

Brings together representatives from district, school sites and MWCSC leadership.

Our hope is this team will provide guidance as we plan for the expansion of the community school model in Duluth.

Examples of specific partners/programs



AmeriCorps
Hillside Youth Theater
Community Garden program
SNAP Education
Girl Power!

Youth Development: YMCA



Expanded Learning Opportunities

Men as Peacemakers
Girl Scouts
Boy's and Girls Club
Arrowhead Youth Soccer Association



Family Engagement

Family Nights/Events
Family Classes - ex. Yoga, Healthy cooking, Circle of Security
Parent Advisory and Leadership team
Parent Teacher Home Visit Project
Parent Leadership Opportunities ex. "parent camp, trainings, events"



Career, College, Citizenship

UMD Science/Engineering Partnership
CSS Science Partnership - "Shoot for the Stars"
Youth Career Exploration programs
Student Council / WEB -peer mentoring
4 Hope - Connecting families to career and college resources/support



Health and Social Supports

Together for Health
Northwoods
Nystrom - mental health counseling
Amber Wing
SOAR Career Solutions
Community Action Duluth financial counseling
St. Louis County / SHIP



Strategic Alignment

A Key component for community schools is having a structure to align components to work together.

A **school-site leadership team**, often comprised of educators, parents, community partners, and others, is responsible for

- creating a shared vision for the school,
- identifying desired results
- helping align and integrate the work of partners with the school.

A **community school coordinator** works hand-in-hand with the principal, and is a member of the school leadership team. The coordinator is responsible for

- building relationships with school staff and community partners,
- engaging families and community residents,
- coordinating supports to students both inside and outside of the classroom

Building Our Duluth Community Schools

Goal:

Access to a coordinated delivery of social, health, economic and educational services offered through school/community partnerships will improve outcomes for students and their families as well as other neighborhood residents.

Objectives: Full Service Community Schools

1. Develop a strong and effective leadership team that is representative of school and community. (MW, LP, DENFELD)
 - 30% school staff
 - 30% parents/family members
 - Includes community partners
2. Increase student achievement and decrease the achievement gap.(MW, LP)
3. Increase access to knowledge, experiences, and services that address social determinants of health (LPMS)
4. Align efforts of school day, after-school, summer, and family programs, emphasizing Positive Behavioral Intervention and Supports that lead to social-emotional growth for students. (MW)

Myers-Wilkins

Key focus areas:

- Out of school time programming
- Improved health and wellness of children and families
- Social Emotional Support - implementing PBIS
- Family Engagement
- Community Partnerships

After-School and Summer Programming

COMPASS

Girl Power!

Key Zone

Hillside Youth Theater

Imagination Station

Enrichment classes: art, cooking, Lego Robotics, creative writing, science, AYSA soccer, basketball, outdoor adventure, Spanish, Girl Scouts, Men as Peacemakers, Kako's choir, World Beat Drumming

last year, we provided academic and enrichment programming to 347 students!

Goal: Improved academic achievement

COMPASS focuses on academics and social emotional support, providing interventions for children performing below grade level.

Evaluation Results Showed:

- 81% met their individual math goal, 79 % met their individual literacy goal, and 83.5% met their STEM vocabulary goals
- 90% of children felt being involved in this program helped them become a better student.
- 92% of parents agreed their child had a better attitude towards school.
- 88% of parents agreed it helped their children with academics.
- 81% of children felt they had new opportunities.
- 80% of students felt they learned things that would help them in life.

Goal: Growth in socio-emotional skills

lessons focused around socio-emotional concepts; conflict resolution, understanding and expressing emotions, impulse control, building positive relationships and making friends.

Responsive Classroom / PBIS strategies - integrating coaching and activities focused on relationship building, team-work, self-discipline and conflict resolution.

Evaluation Results Showed:

- 84.8% of 1st -2nd grade students improved on the social-emotional rubric, demonstrating impulse control and identifying and demonstrating ways to work well and play with others.
- 93% of 3rd-5th grade students improved when it came to expressing their emotions in socially acceptable ways and when describing approaches for making and keeping friends.
- 80% of students felt it helped me learn how to get along better with others.
- 85% of students agreed it helped me to understand myself and express my feelings
- 100% of parents agreed the staff encouraged positive interactions among children.
- 92% of parents agreed their child had a better attitude towards school.

Improved health and wellness of children & families

Together for Health -
Community Health Worker and
Public Health Nurse on-site

Parenting classes

Mental Health Trainings

Health and Wellness classes
and events

Northwoods

Family Engagement:

Family Nights and Events

Cultural Classes/Events

Parent Staff Advisory Council

Leadership Opportunities

Focus Groups

Reducing Barriers

Lincoln Park

Key focus areas:

Family engagement and leadership

Community partnerships

Increase access to services (transportation and programming)

Support health and wellness of children and families

Increase student achievement and reduce achievement gap
(Math, Reading, and Attendance goals aligned with school improvement plan)

Family and Community Engagement

Leadership Team Development:

Parents/family members, school staff, & community members work together to identify shared goals.

We hope to continue to engage family members and to ensure we are reflective of our student population.

Asset and Needs Assessment:

Focus groups with students, families, and staff;

School health index

Community school conversation

Access to Services

Transportation/Access:

22% of Lincoln Park residents with no access to personal vehicle

LPMS not on a DTA bus line

Met with stakeholders

Identified creative solutions-district van

Hoping for a sign

Communication:

Parent Teacher Home Visit Project

Subcommittee to focus on family engagement/ effective communication

Out of School Time Opportunities:

After-school clubs in partnership with YMCA

Youth Corps

CSS Shoot for the Stars STEM programming

Summer Theatre Camp (HYT/MWCSC)

College/Career/Citizenship:

CSS Shoot for the Stars STEM programming

Boys and Girls Club Career Launch during WIN

Wellness

Physical Wellness

Wellness Subcommittee established

Work in close collaboration with St. Louis County Public Health/SHIP Coordinator (shared outcomes)

Safe Routes to School

Walk to School Days

School Breakfast grant

Active Classroom/Active Recess Resources

School Garden/Farm to School

Socio-Emotional/Mental Wellness

PBIS

Nystrom

Northwoods

Trauma-informed schools training

Lincoln Park School Goals

Math SMART Goal

Reading SMART Goal

Attendance SMART Goal

Communication Focus

Family Partnership Focus

Questions?