

Lakeland Joint School District #272

5506 N. Washington St.
Rathdrum, ID 83858
208-687-0431



**LJSD Vision: A community committed to academic excellence ...
dedicated to student success.**

Board Agenda Item Request

AGENDA ITEM: LMS Parking Lot Circulation Revision Proposal

MEETING DATE: May 7, 2025

PREPARED BY: Jessica Grantham, Tim Haag

INFORMATIONAL SUMMARY:

During the planning process for the approved concrete projects, we reviewed each site for student safety in the parking lot and traffic flow. Lakeland Middle School (LMS) was identified as a major concern. Architects West provided ideas on fixing the parking lot circulation to maximize student safety. These adjustments were supported by building administrators, ADSS Schultz, ADSS Hatcher, and the Superintendent.

The proposed changes would be as follows: (Graphics Attached)

- The north entrance/exit off of HWY 41 will become a bus/staff-only entrance & exit.
- We will open a new entrance between the north entrance and the existing entrance/exit to the parking lot. There is currently an approach off the highway that will support this location. A sidewalk will be installed to allow students that crossed at the north crosswalk to safely enter school grounds without walking through the parking lot.
- The existing entrance/exit will be closed. We will need to add sidewalks and relandscape this area.
- We will open a new exit just north of the reader board sign to allow for right and left turning traffic to exit the parking lot without immediately encountering a crosswalk.

Tim Haag took the plan to the Idaho Transportation Department (ITD) to see if the project is something they would approve. The District has approached ITD in the past to make adjustments to LMS, but we were unsuccessful. ITD was receptive to the plan and provided positive feedback.

In continued talks about the plan, it was identified that we should relocate the crosswalk between LMS and Lakeland High School (LHS) to the south of the intersection to allow right-hand turning traffic the ability to exit LHS while students are crossing. Additionally, opening the drop-off lane at LHS to the highway to allow for additional exit points at the high school.

RECOMMENDATION:

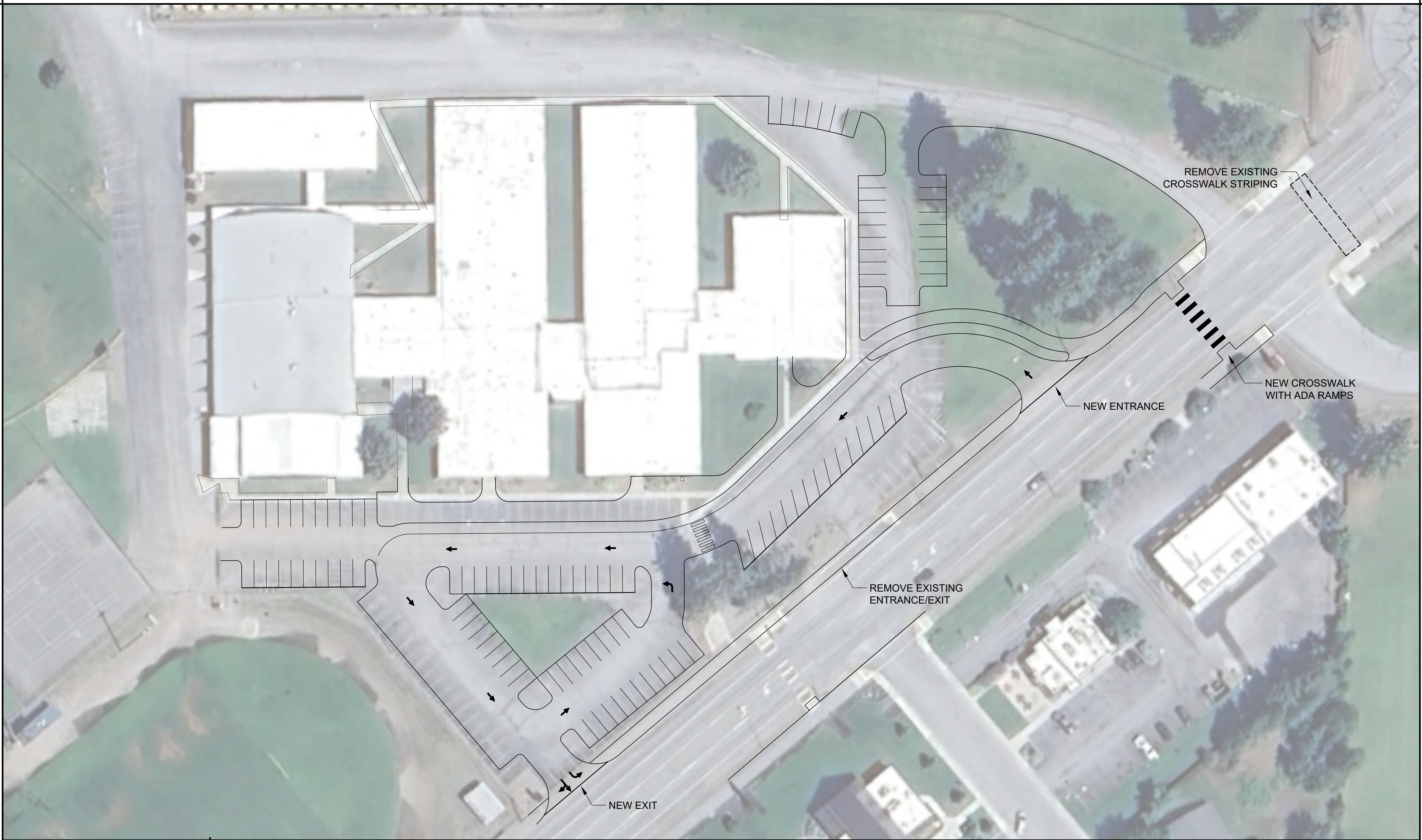
We recommend that the Board approve the proposed concept and allow for survey work and official plan approval through ITD and the City of Rathdrum. This work will allow us to develop a project budget for approval by the Board. This project can be funded through the School Modernization Facilities Fund.

ATTACHMENTS:

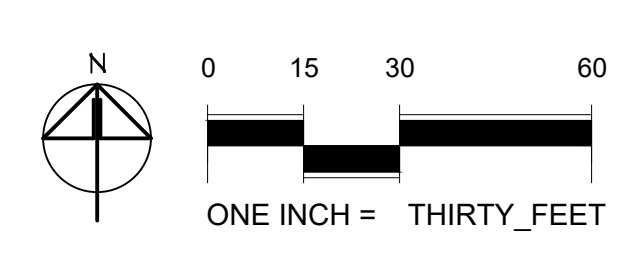
Site Concept Plan

Labeled Site Concept Plan





LAKELAND MIDDLE SCHOOL
SITE PLAN CONCEPT



May 2025