

**June 2017**

Derby Public Schools

# Performance Dashboard

---

## Derby High School

Martin Pascal, Principal

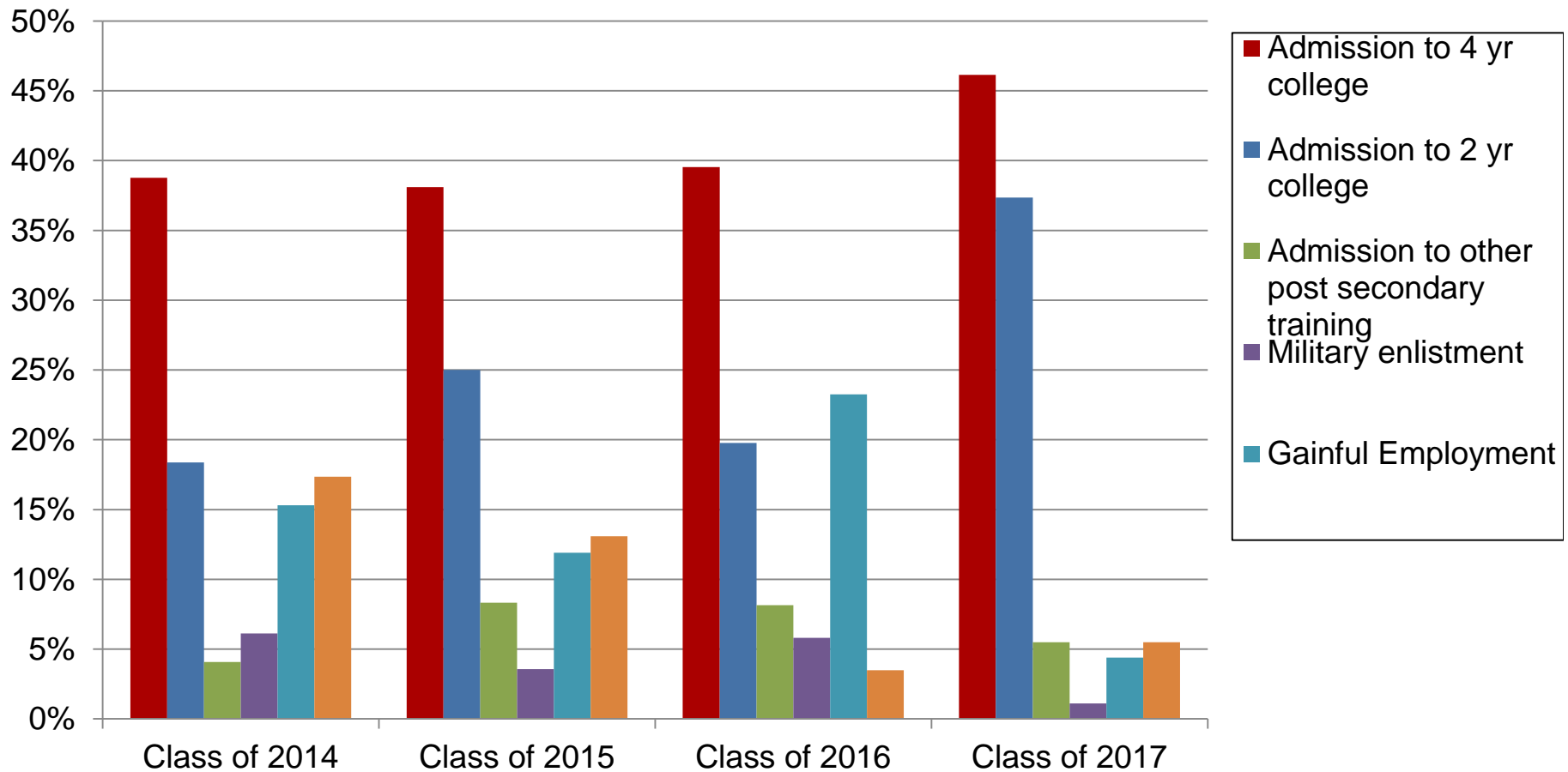
*“People without information cannot act. People with information cannot help but act.”*

*Ken Blanchard*



## Post High School Plans

Percent of graduates



*Information is updated in the fall following graduation*

Promotion:

Percent of students promoted

	9	10	11	12
<b>June 2017</b>	86	84	89	97
<b>June 2016</b>	83	87	83	98
<b>June, 2015</b>	82	98	88	
<b>June, 2014</b>	93	91	97	

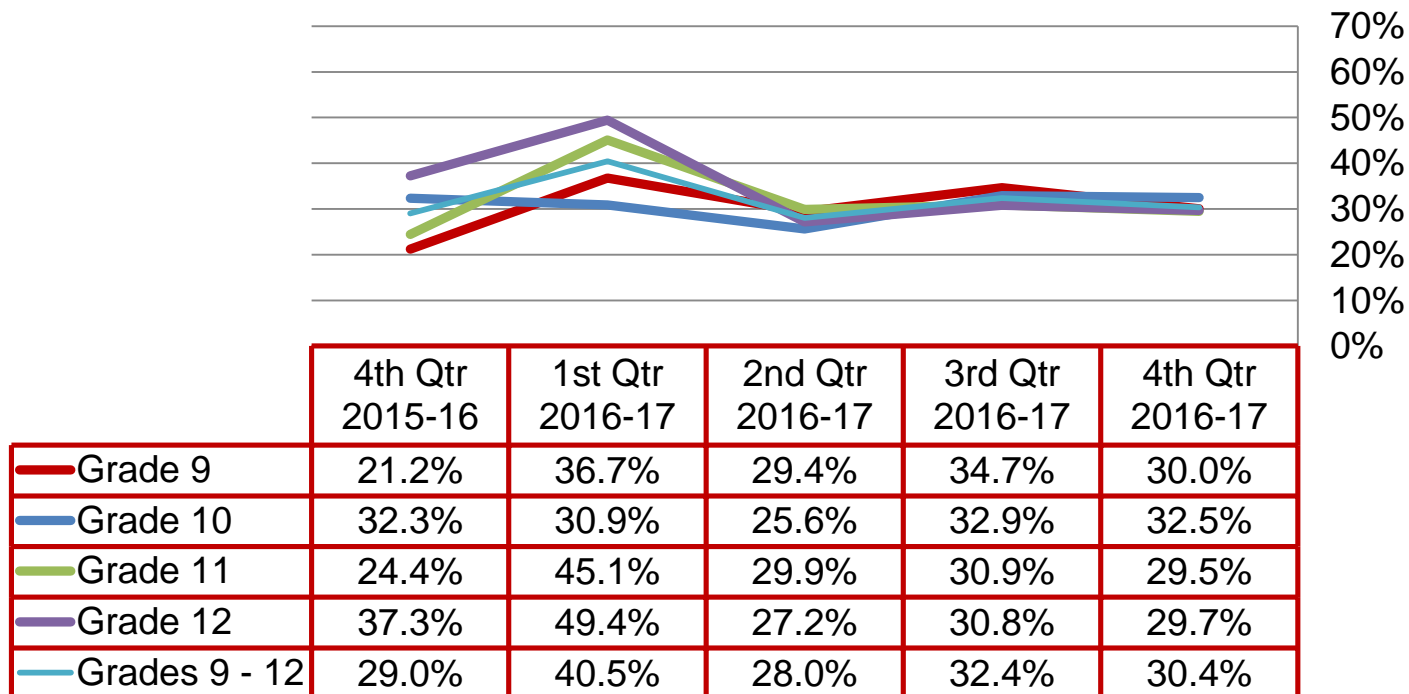
Dropout:

<u>Year</u>	<u>Annual Dropout Rate</u>
<b>2017</b>	1.1
<b>2016</b>	3.2
<b>2015</b>	.08
<b>2014</b>	1.8

# Quarterly Data

## High Grades

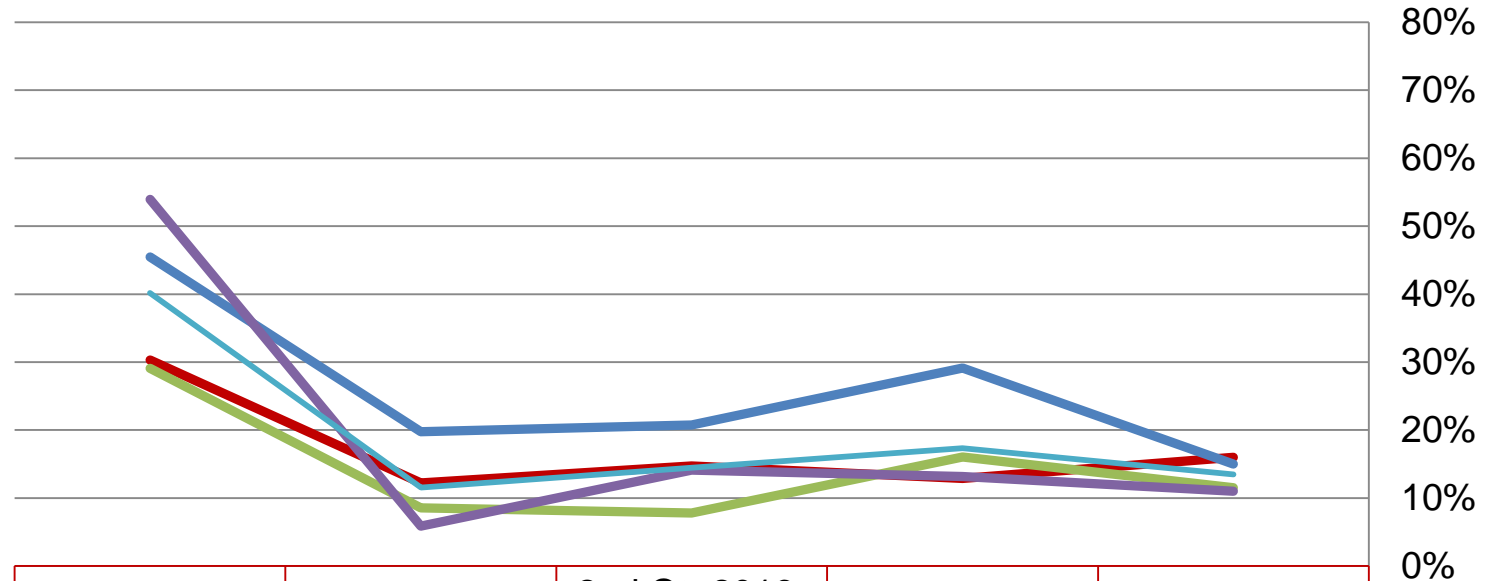
Percent of students earning 80% or above in all courses regardless of academic level:



## Failing Grades

Derby High School

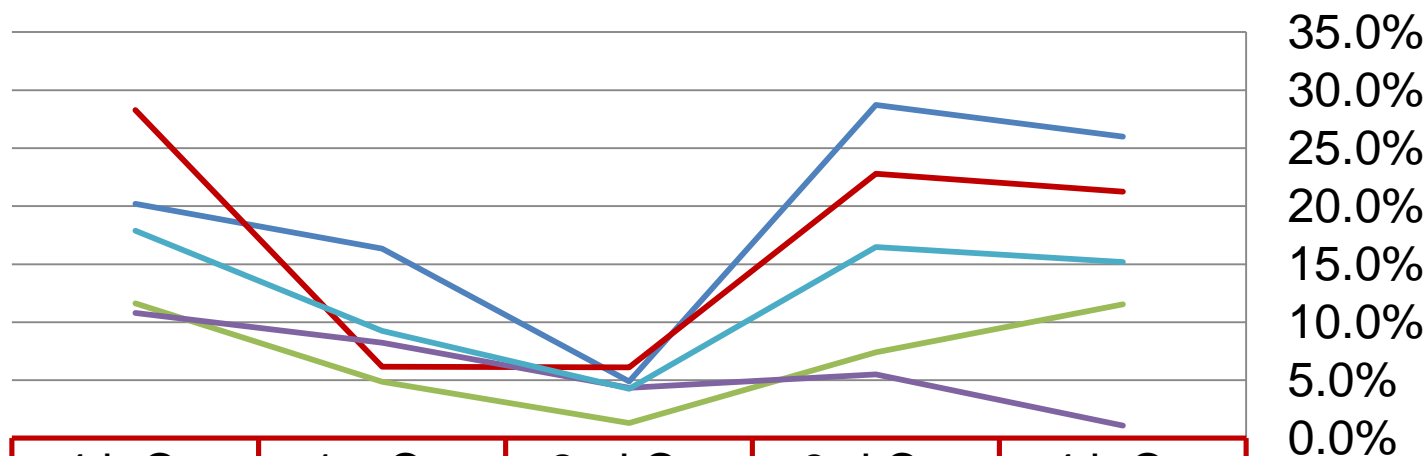
Percent of students with at least one course below a 65%:



	4th Qtr 2015-16	1st Qtr 2016-17	2nd Qtr 2016-17	3rd Qtr 2016-17	4th Qtr 2016-17
Grade 9	30.3%	12.2%	14.7%	12.9%	16.0%
Grade 10	45.5%	19.8%	20.7%	29.1%	15.0%
Grade 11	29.1%	8.5%	7.8%	16.0%	11.5%
Grade 12	53.9%	5.9%	14.1%	13.2%	11.0%
Grades 9 - 12	40.2%	11.6%	14.4%	17.3%	13.5%

## Failing Grades

Percent of students with at least two courses below a 65%:



	4th Qtr 2015-16	1st Qtr 2016-17	2nd Qtr 2016-17	3rd Qtr 2016-17	4th Qtr 2016-17
Grade 9	20.2%	16.3%	4.9%	28.7%	26.0%
Grade 10	28.3%	6.2%	6.1%	22.8%	21.3%
Grade 11	11.6%	4.9%	1.3%	7.4%	11.5%
Grade 12	10.8%	8.2%	4.3%	5.5%	1.1%
Grades 9 - 12	17.9%	9.2%	4.2%	16.5%	15.2%

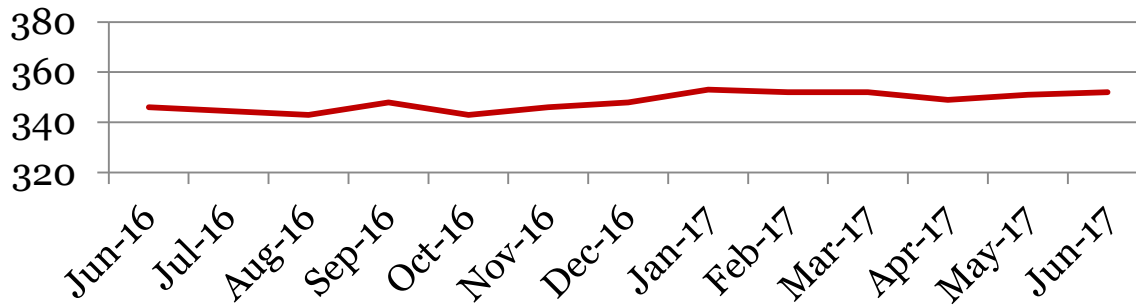
# Monthly Data

Derby High School

## Enrollment – 1<sup>st</sup> of the month

	9	10	11	12	Total
<b>Jun-17</b>	101	80	80	91	<b>352</b>
<b>May-17</b>	101	80	79	91	<b>351</b>
<b>Apr-17</b>	100	80	78	91	<b>349</b>
<b>Mar-17</b>	101	79	81	91	<b>352</b>
<b>Feb-17</b>	102	81	78	91	<b>352</b>
<b>Jan-17</b>	102	82	77	92	<b>353</b>
<b>Dec-16</b>	100	80	83	85	<b>348</b>
<b>Nov-16</b>	98	81	82	85	<b>346</b>
<b>Oct-16</b>	98	78	83	84	<b>343</b>
<b>Sept-16</b>	99	81	84	84	<b>348</b>
<b>Jun-16</b>	98	81	90	77	<b>346</b>

## Total School Enrollment

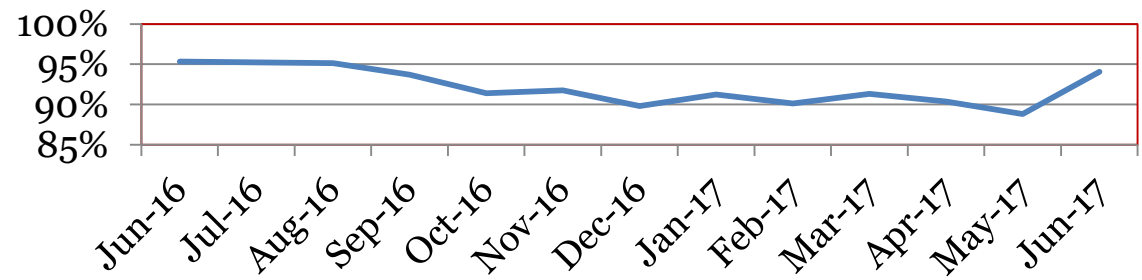


## Attendance – Students

Average daily percent present:

	9	10	11	12	Total
<b>Jun-17</b>	92.8	93.4	93.9	96.3	<b>94.1</b>
<b>May-17</b>	87.2	90.6	90.0	87.9	<b>88.8</b>
<b>Apr-17</b>	88.5	90.5	90.5	92.2	<b>90.3</b>
<b>Mar-17</b>	88.5	91.6	91.5	93.9	<b>91.3</b>
<b>Feb-17</b>	87.5	90.6	88.3	93.3	<b>89.9</b>
<b>Jan-17</b>	88.5	92.7	90.6	93.4	<b>91.2</b>
<b>Dec-16</b>	86.5	90.8	90.0	92.7	<b>89.8</b>
<b>Nov-16</b>	89.8	91.3	92.9	93.3	<b>91.7</b>
<b>Oct-16</b>	88.1	92.4	92.7	93.1	<b>91.4</b>
<b>Sep-16</b>	89.2	95.1	92.6	91.9	<b>92.0</b>
<b>Aug-16</b>	95.2	95.9	94.5	93.9	<b>94.9</b>
<b>Jun-16</b>	91.8	96.0	95.0	99.5	<b>95.3</b>

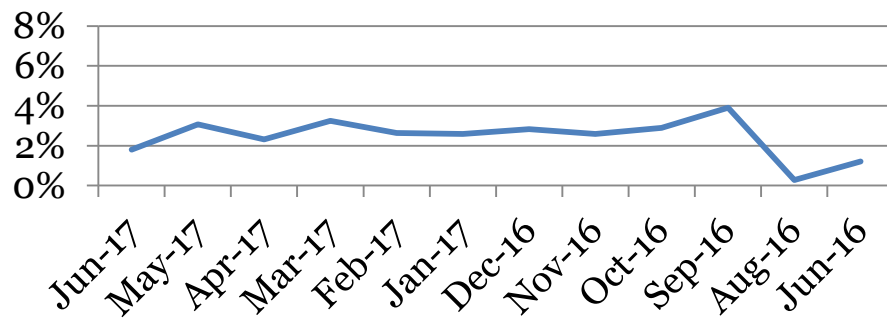
**Total Student Attendance**



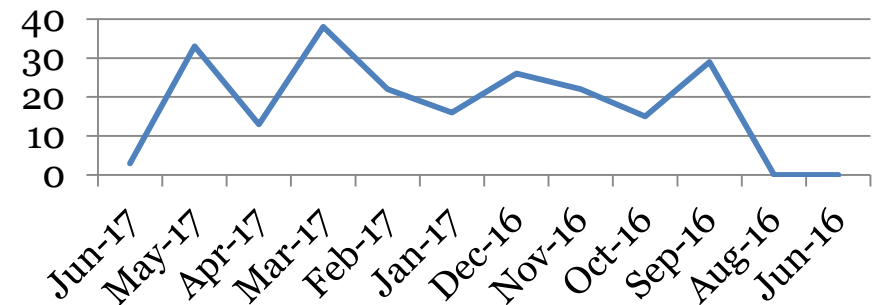


Tardies Average daily percent tardy:

	9	10	11	12	Total
<b>Jun-17</b>	2	2	3	1	<b>2</b>
<b>May-17</b>	2	4	3	3	<b>3</b>
<b>Apr-17</b>	2	2	2	3	<b>2</b>
<b>Mar-17</b>	3	4	3	3	<b>3</b>
<b>Feb-17</b>	2	3	2	2	<b>3</b>
<b>Jan-17</b>	2	3	2	3	<b>3</b>
<b>Dec-16</b>	2	3	3	3	<b>3</b>
<b>Nov-16</b>	2	3	2	3	<b>3</b>
<b>Oct-16</b>	3	3	3	3	<b>3</b>
<b>Sept-16</b>	3	4	4	4	<b>4</b>
<b>Aug-16</b>	0	0	0	0	<b>0</b>
<b>June-16</b>	1	2	1	1	<b>1</b>

**Total Student Tardies**Tardies: Number of students tardy 5 or more days:

	9	10	11	12	Total
<b>Jun-17</b>	2	1	0	0	<b>3</b>
<b>May-17</b>	9	11	4	9	<b>33</b>
<b>Apr-17</b>	5	3	0	5	<b>13</b>
<b>Mar-17</b>	9	11	8	10	<b>38</b>
<b>Feb-17</b>	7	7	2	6	<b>22</b>
<b>Jan-17</b>	6	3	3	4	<b>16</b>
<b>Dec-16</b>	3	9	5	9	<b>26</b>
<b>Nov-16</b>	7	5	2	8	<b>22</b>
<b>Oct-16</b>	1	5	4	5	<b>15</b>
<b>Sept-16</b>	4	11	9	5	<b>29</b>
<b>Aug-16</b>	0	0	0	0	<b>0</b>
<b>June-16</b>	0	0	0	0	<b>0</b>

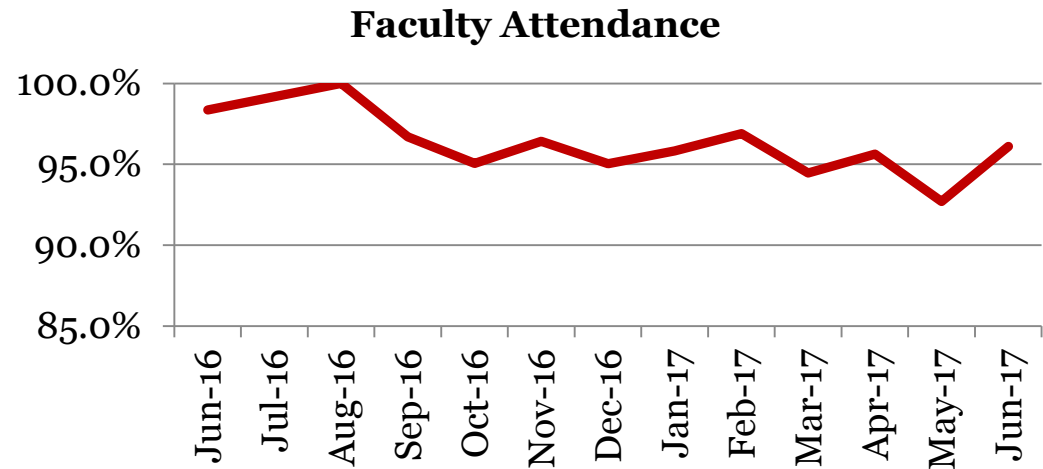
**# Students over Threshold**

## Attendance – Faculty

Average daily percent present:

Derby High School

	Total
Jun-17	96.1
May-17	92.7
Apr-17	95.6
Mar-17	94.5
Feb-17	96.9
Jan-17	95.8
Dec-16	95.0
Nov-16	96.4
Oct-16	95.1
Sept-16	96.7
June-16	98.4



*\*This indicator reflects certified staff and does not include absences created by class trips, professional development, workman's comp and FMLA. However % may be reduced due to long term illness beyond FMLA.*

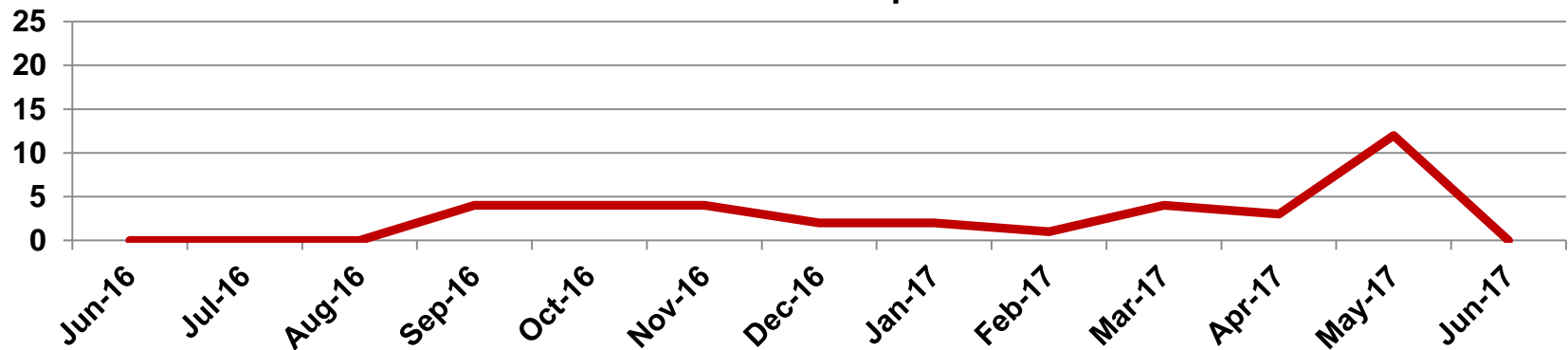
## Suspensions – Out of School

Derby High School

Number of student suspensions (total days of suspension):

	9		10		11		12		Total	
<b>Jun-17</b>	0	(0)	0	(0)	0	(0)	0	(0)	<b>0</b>	<b>(0)</b>
<b>May-17</b>	5	(28)	3	(21)	3	(10)	1	(2)	<b>12</b>	<b>(61)</b>
<b>Apr-17</b>	2	(12)	0	(0)	1	(10)	0	(0)	<b>3</b>	<b>(22)</b>
<b>Mar-17</b>	3	(22)	0	(0)	1	(2)	0	(0)	<b>4</b>	<b>(24)</b>
<b>Feb-17</b>	1	(2)	0	(0)	0	(0)	0	(0)	<b>1</b>	<b>(2)</b>
<b>Jan-17</b>	0	(0)	0	(0)	1	(10)	1	(5)	<b>2</b>	<b>(15)</b>
<b>Dec-16</b>	1	(10)	1	(10)	0	(0)	0	(0)	<b>2</b>	<b>(20)</b>
<b>Nov-16</b>	2	(15)	1	(3)	1	(2)	0	(0)	<b>4</b>	<b>(20)</b>
<b>Oct-16</b>	2	(20)	0	(0)	2	(13)	0	(0)	<b>4</b>	<b>(33)</b>
<b>Sept-16</b>	1	(2)	0	(0)	2	(15)	1	(3)	<b>4</b>	<b>20</b>
<b>Jun-16</b>	0	(0)	0	(0)	0	(0)	0	(0)	<b>0</b>	<b>(0)</b>

**Total Out of School Suspensions**

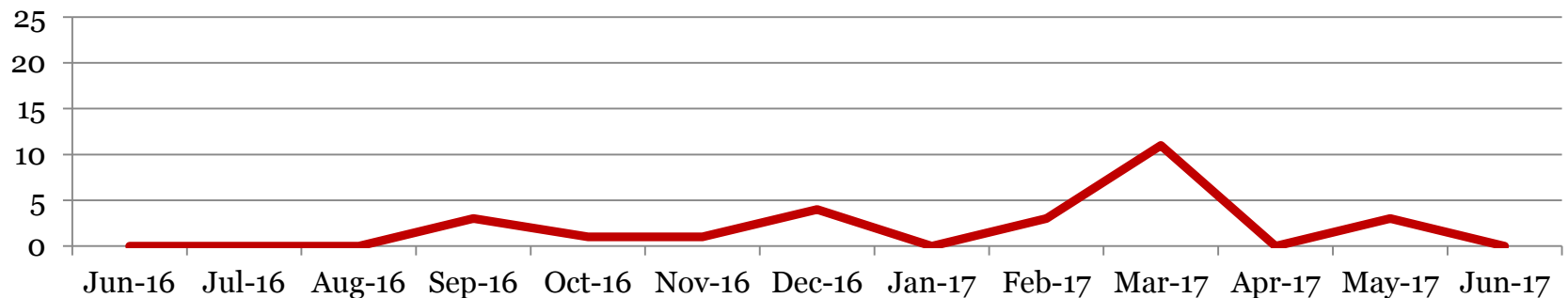


## Suspensions – In School

Number of student suspensions (total days of suspension):

	9		10		11		12		Total	
<b>Jun-17</b>	0	(0)	0	(0)	0	(0)	0	(0)	<b>0</b>	<b>(0)</b>
<b>May-17</b>	0	(0)	3	(4)	0	(0)	0	(0)	<b>3</b>	<b>(4)</b>
<b>Apr-17</b>	0	(0)	0	(0)	0	(0)	0	(0)	<b>0</b>	<b>(0)</b>
<b>Mar-17</b>	1	(2)	8	(0)	2	(3)	0	(0)	<b>11</b>	<b>(5)</b>
<b>Feb-17</b>	2	(4)	0	(0)	1	(1)	0	(0)	<b>3</b>	<b>(5)</b>
<b>Jan-17</b>	0	(0)	0	(0)	0	(0)	0	(0)	<b>0</b>	<b>(0)</b>
<b>Dec-16</b>	2	(2)	2	(3)	0	(0)	0	(0)	<b>4</b>	<b>(5)</b>
<b>Nov-16</b>	0	(0)	1	(1)	0	(0)	0	(0)	<b>1</b>	<b>(1)</b>
<b>Oct-16</b>	1	(1)	0	(0)	0	(0)	0	(0)	<b>1</b>	<b>(1)</b>
<b>Sept-16</b>	1	(1)	2	(2)	0	(0)	0	(0)	<b>3</b>	<b>(3)</b>
<b>Jun-16</b>	0	(0)	0	(0)	0	(0)	0	(0)	<b>0</b>	<b>(0)</b>

### Total In School Suspensions



## Newly Enrolled Students

	9	10	11	12	Total
<b>Jun-17</b>	0	0	0	0	<b>0</b>
<b>May-17</b>	2	0	1	0	<b>3</b>
<b>Apr-17</b>	1	1	1	0	<b>3</b>
<b>Mar-17</b>	2	2	1	0	<b>5</b>
<b>Feb-17</b>	1	0	1	0	<b>2</b>
<b>Jan-17</b>	4	3	0	1	<b>8</b>
<b>Dec-16</b>	0	0	1	0	<b>1</b>
<b>Nov-16</b>	1	1	1	0	<b>3</b>
<b>Oct-16</b>	2	3	3	1	<b>9</b>
<b>Sept-16</b>	11	1	4	1	<b>17</b>
<b>Summer-16</b>	6	5	4	5	<b>20</b>
<b>June-16</b>	0	0	0	0	<b>0</b>

## Departing Students

Students who have left the school during the month for any reason:

	9	10	11	12	Total
<b>Jun-17</b>	0	0	0	0	<b>0</b>
<b>May-17</b>	0	1	0	0	<b>1</b>
<b>Apr-17</b>	0	0	0	0	<b>0</b>
<b>Mar-17</b>	2	0	2	0	<b>4</b>
<b>Feb-17</b>	1	0	0	0	<b>1</b>
<b>Jan-17</b>	1	0	0	0	<b>1</b>
<b>Dec-16</b>	1	1	1	0	<b>3</b>
<b>Nov-16</b>	0	1	0	0	<b>1</b>
<b>Oct-16</b>	3	1	3	1	<b>8</b>
<b>Sept-16</b>	1	1	1	1	<b>4</b>
<b>Summer-16</b>	13	11	2	3	<b>29</b>
<b>June-16</b>	3	0	0	0	<b>3</b>

## Dropouts

Derby High School

Student who discontinue schooling, leave for a GED program/Job Corp, or are dis-enrolled by grade level.

	9	10	11	12	Total
<b>Jun-17</b>	0	0	0	0	<b>0</b>
<b>May-17</b>	0	0	0	0	<b>0</b>
<b>Apr-17</b>	0	0	0	0	<b>0</b>
<b>Mar-17</b>	9	0	0	0	<b>1</b>
<b>Feb-17</b>	0	0	0	0	<b>0</b>
<b>Jan-17</b>	0	0	0	0	<b>0</b>
<b>Dec-16</b>	0	0	0	0	<b>0</b>
<b>Nov-16</b>	0	0	0	0	<b>0</b>
<b>Oct-16</b>	0	0	0	0	<b>0</b>
<b>Sept-16</b>		0	1	1	<b>3</b>
<b>Summer-16</b>	1	0	0	1	<b>2</b>
<b>June-16</b>	0	0	0	0	<b>0</b>